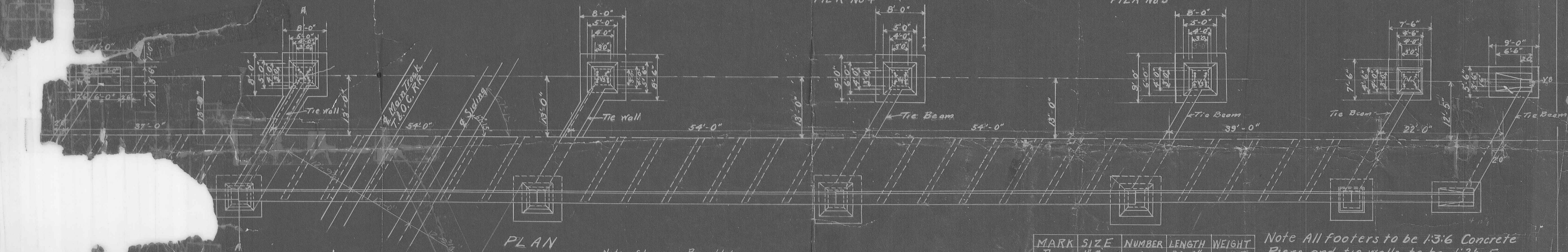
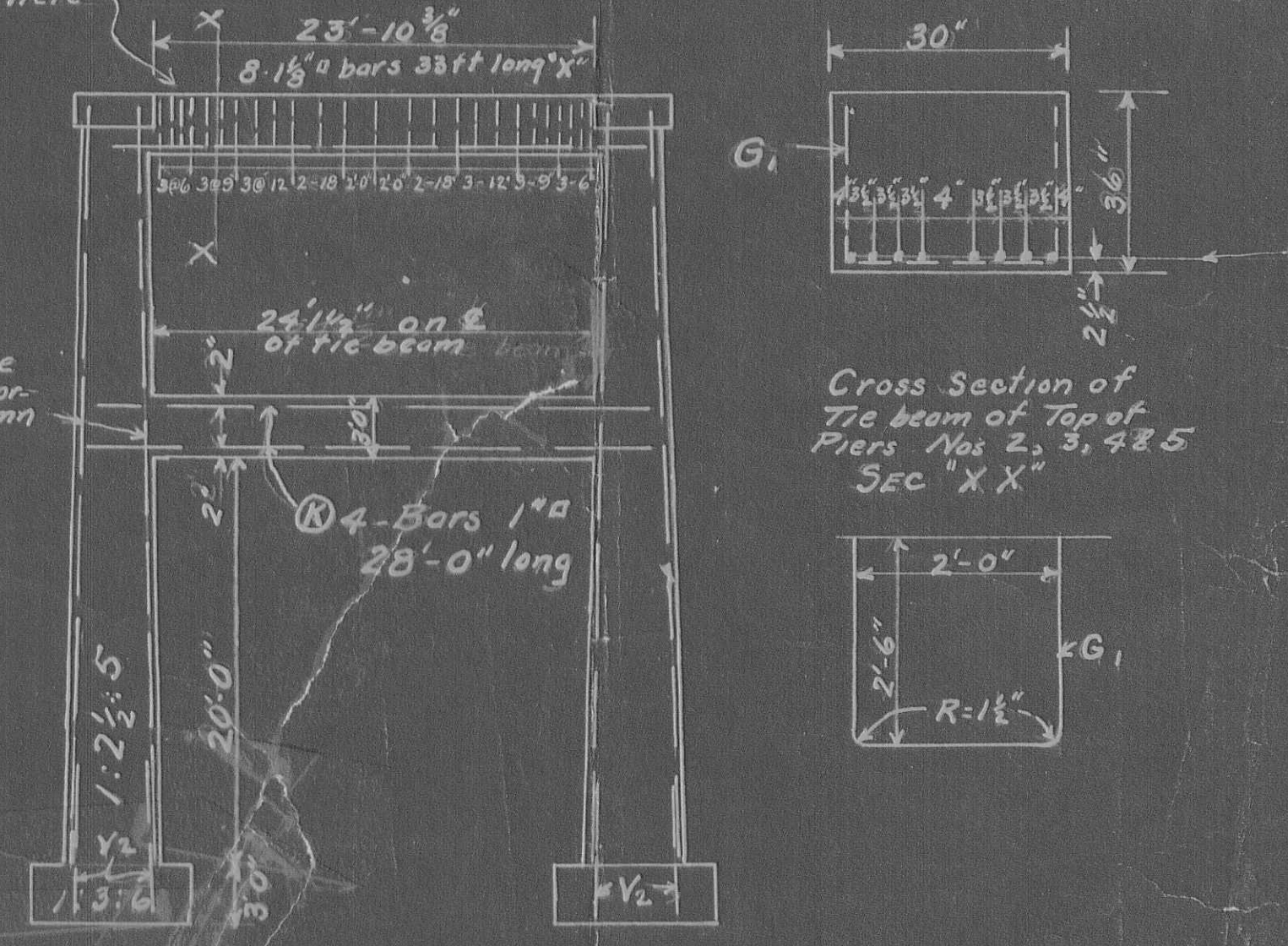
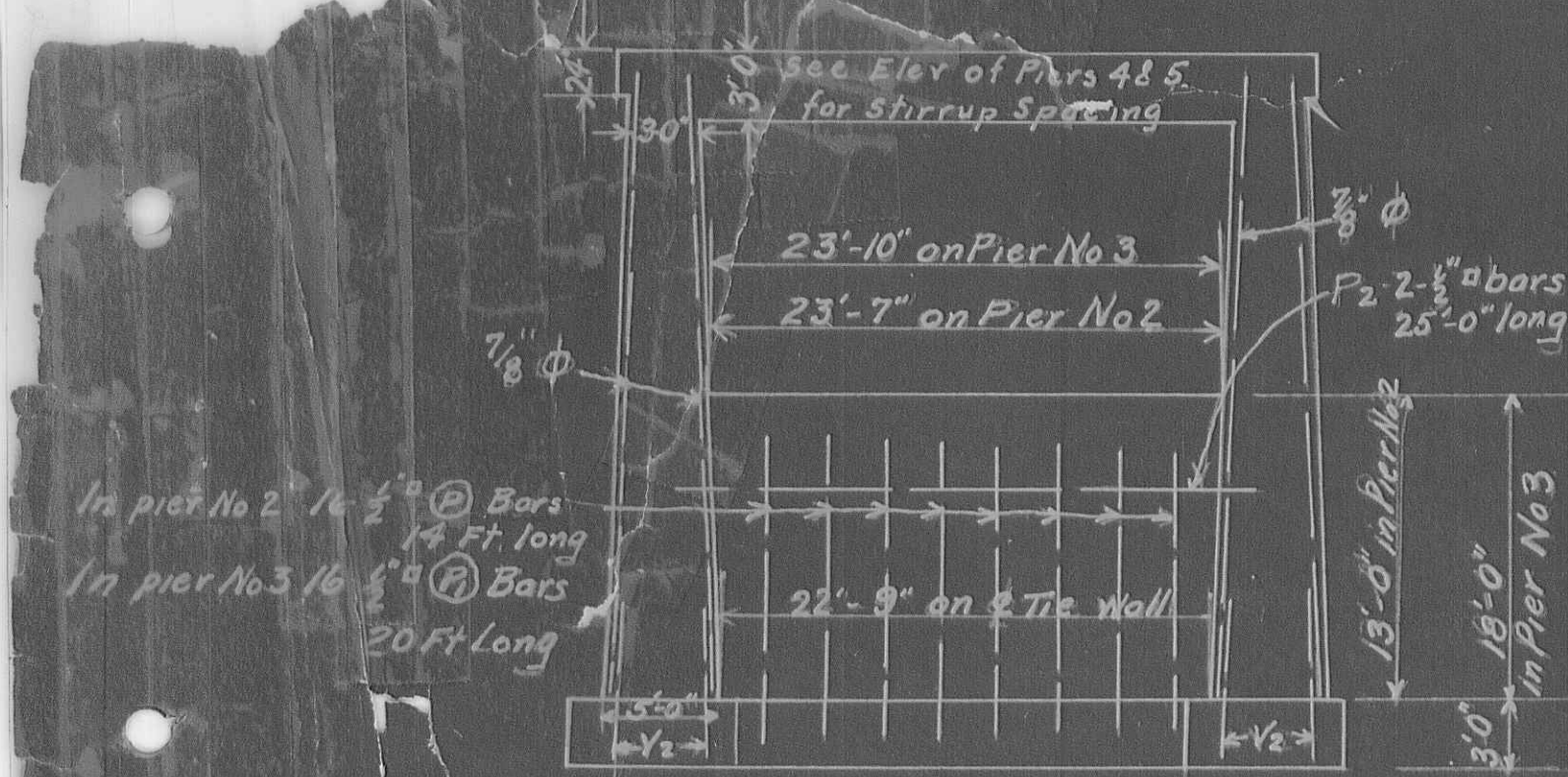


Note - Superstructure to be composed of 2 Standard G-35-24, 3 Standard G-50-24 and 1 Slab span Span-19 Roadway 24" revised for 24' 5" Left Forward Skew



Note - Shrivrs in Piers 1 to 6 incl. are to be spaced as shown here

Pier	ELEVATIONS OF PIER TOPS			
	NW	SW	NE	SE
1	1144.48	1144.50	1144.57	1144.59
2	1144.78	1144.82	1144.76	1144.80
3	1144.32	1144.22	1143.92	1143.83
4	1142.28	1144.07	1141.79	1141.60
5	1139.61	1137.39	1139.12	1138.90
6	1137.80	1137.60	1137.31	1137.11
7	1136.70	1136.60	1136.21	1136.11



MARK	SIZE	NUMBER	LENGTH	WEIGHT
D1	1" φ	1	31'-0"	105
D2	"	1	26'-6"	90
D3	"	1	26'-6"	90
D4	"	1	31'-0"	105
E	"	5	28'-0"	476
Z1	"	3	28'-0"	286
L	1" φ	45	21'-6"	2583
W	3/4" φ	12	28'-0"	224
F	3/4" φ	44	6'-0"	224
X	1 1/8" φ	32	33'-0"	4543
K	1" φ	12	28'-0"	1143
P	1/2" φ	16	14'-0"	190
P1	1/2" φ	16	20'-0"	272
P2	3/4" φ	4	25'-0"	85
Z	1" φ	16	33'-0"	1794
V1	7/8" φ	8	26'-3"	429
V2	"	5	6'-0"	662
V3	"	3	35'-0"	572
V4	"	3	37'-6"	613
V5	"	3	32'-0"	523
V6	"	8	27'-6"	286
V7	"	8	24'-0"	392
V8	"	6	25'-0"	307
G1	3/4" φ	125	7'-0"	584
G2	"	25	9'-0"	150
G3	"	23	8'-6"	132
Total Weight				16860

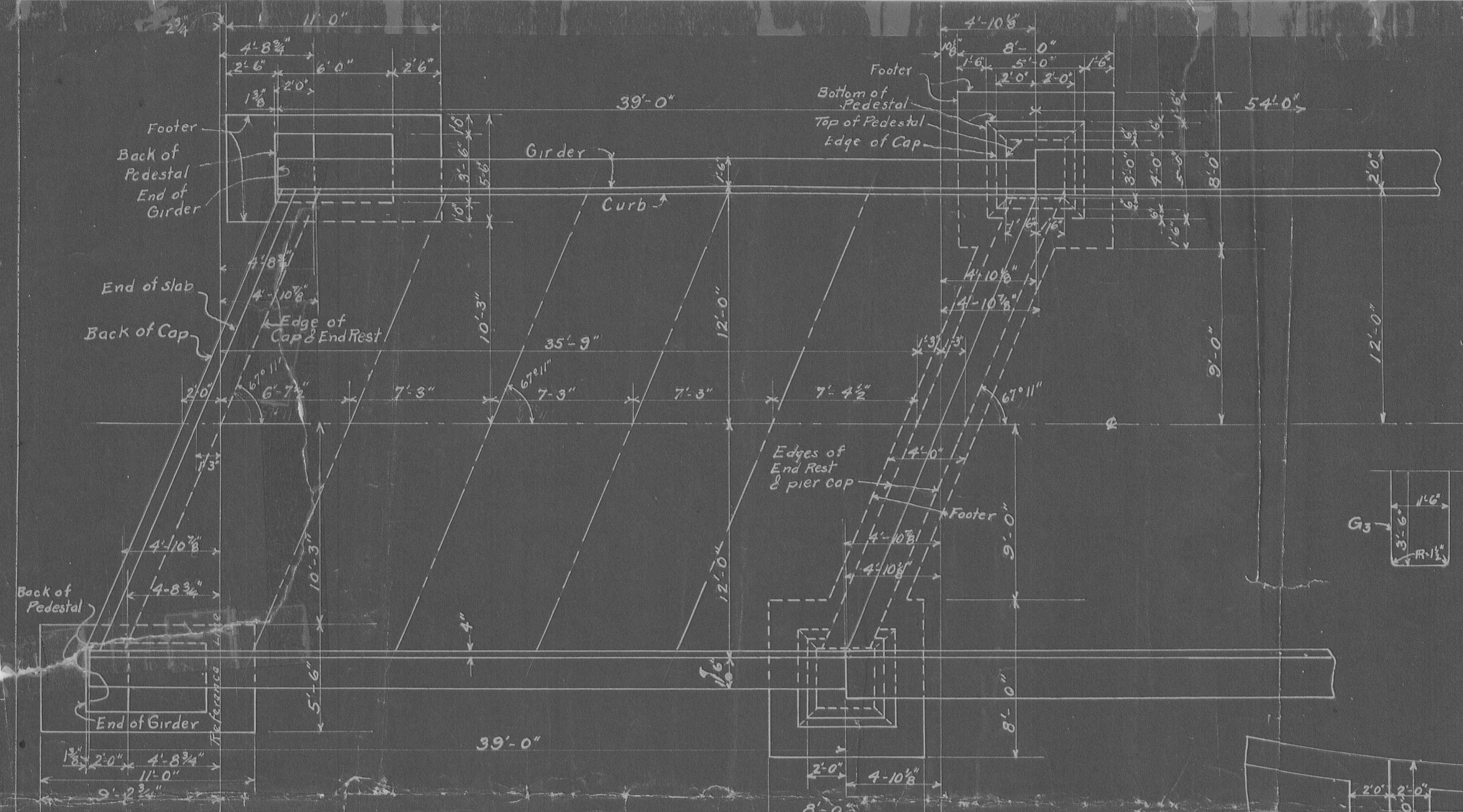
Note All footers to be 1:3:6 Concrete
 Piers and tie walls to be 1:2 1/2:5
 Superstructure to be 1:2:4
 Wearing Course to be 1 1/2:3

Total Estimated Quantities
 1:2:4 Concrete - 383 1/2 Cuyds.
 1:2 1/2:5 Concrete - 356 2/3 Cuyds.
 1:3:6 Concrete - 117.0 Cuyds.
 Reinforcing Steel - 99610 Lbs.
 4" Concrete Wearing Course - 679.3 Sqyds.
 Excavation - 400 Cuyds.
 Preformed Bit Joint Material - 275 Sq.ft.

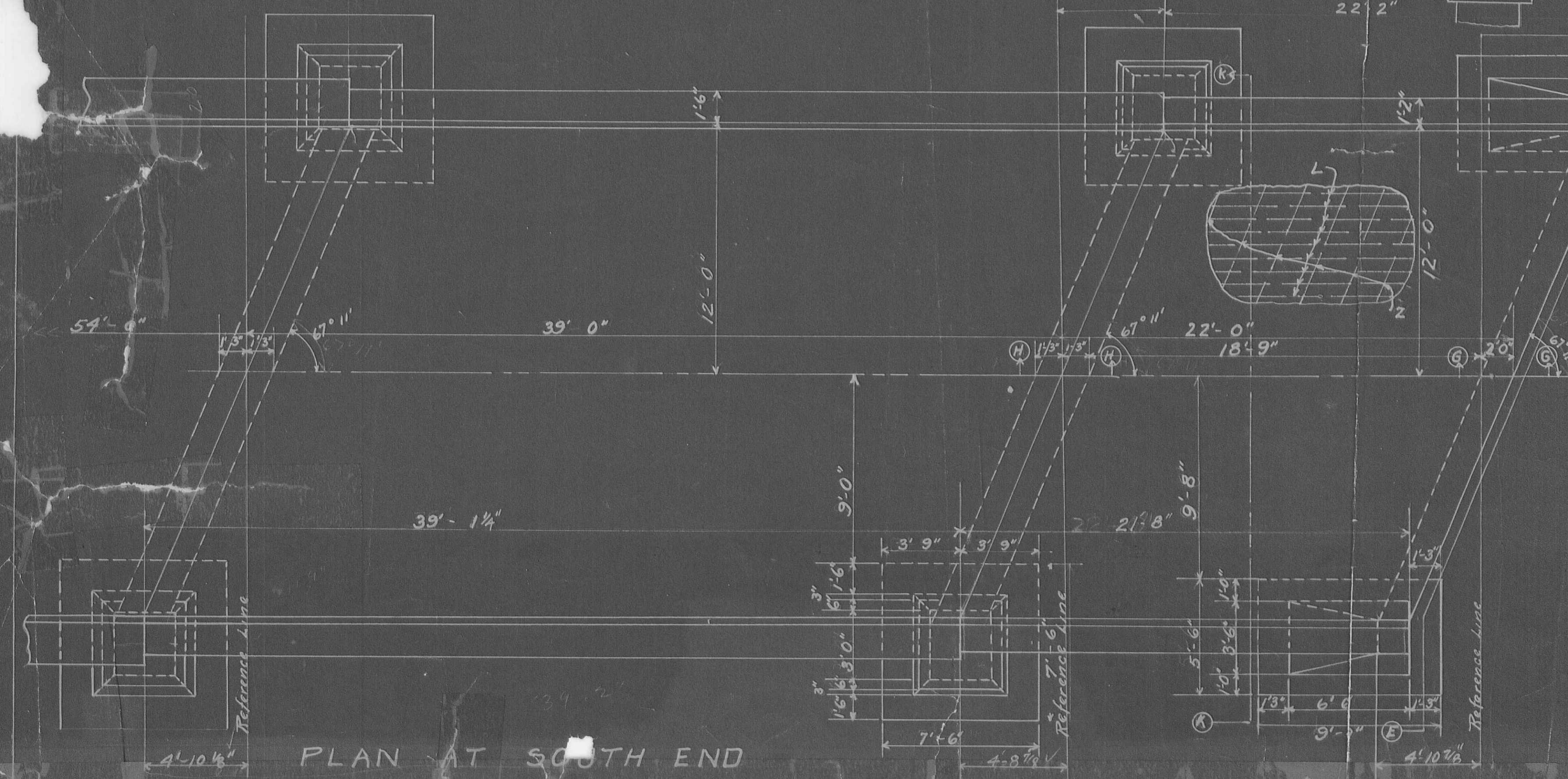
OVERHEAD CROSSING
 at EAST LIBERTY OHIO
 STA 389+31 to STA 392+09

Fed. Road District	State	Fed. Aid Proj.	Fiscal Year
10	Ohio		1923

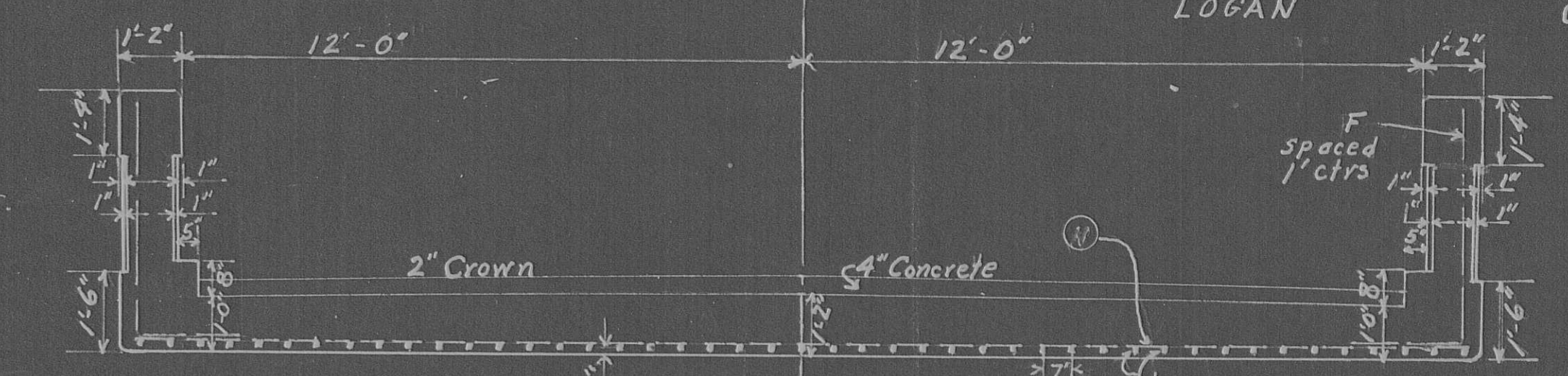
I.G.H. 235
LOGAN SEC. C.1
COUNTY



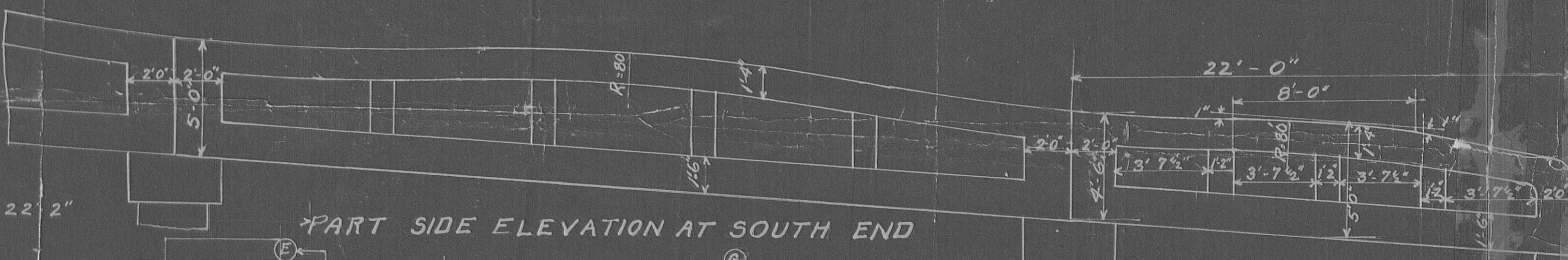
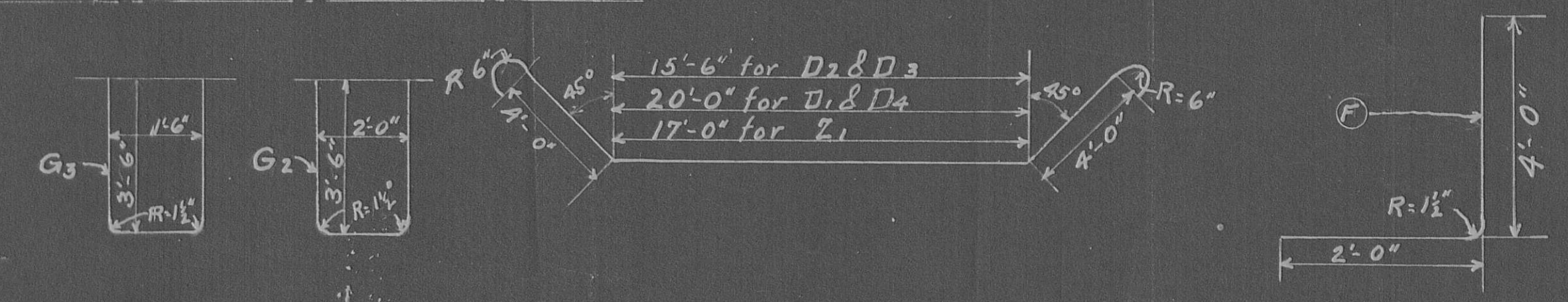
PLAN AT NORTH END
38'-10 3/4"



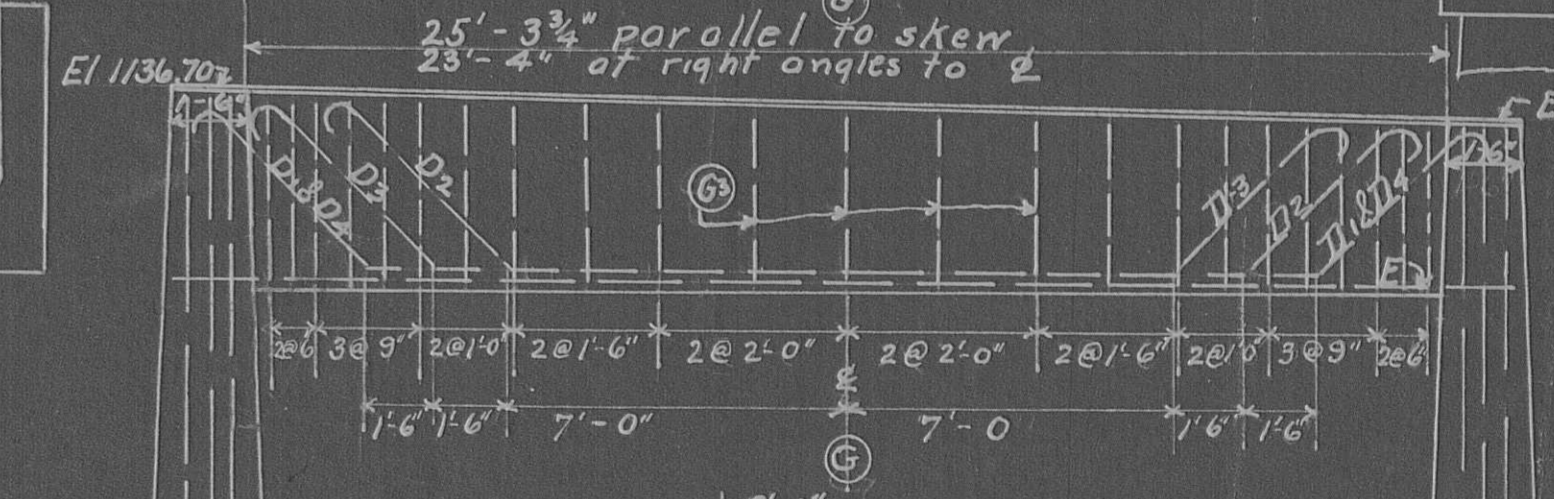
PLAN AT SOUTH END



SECTION K-K



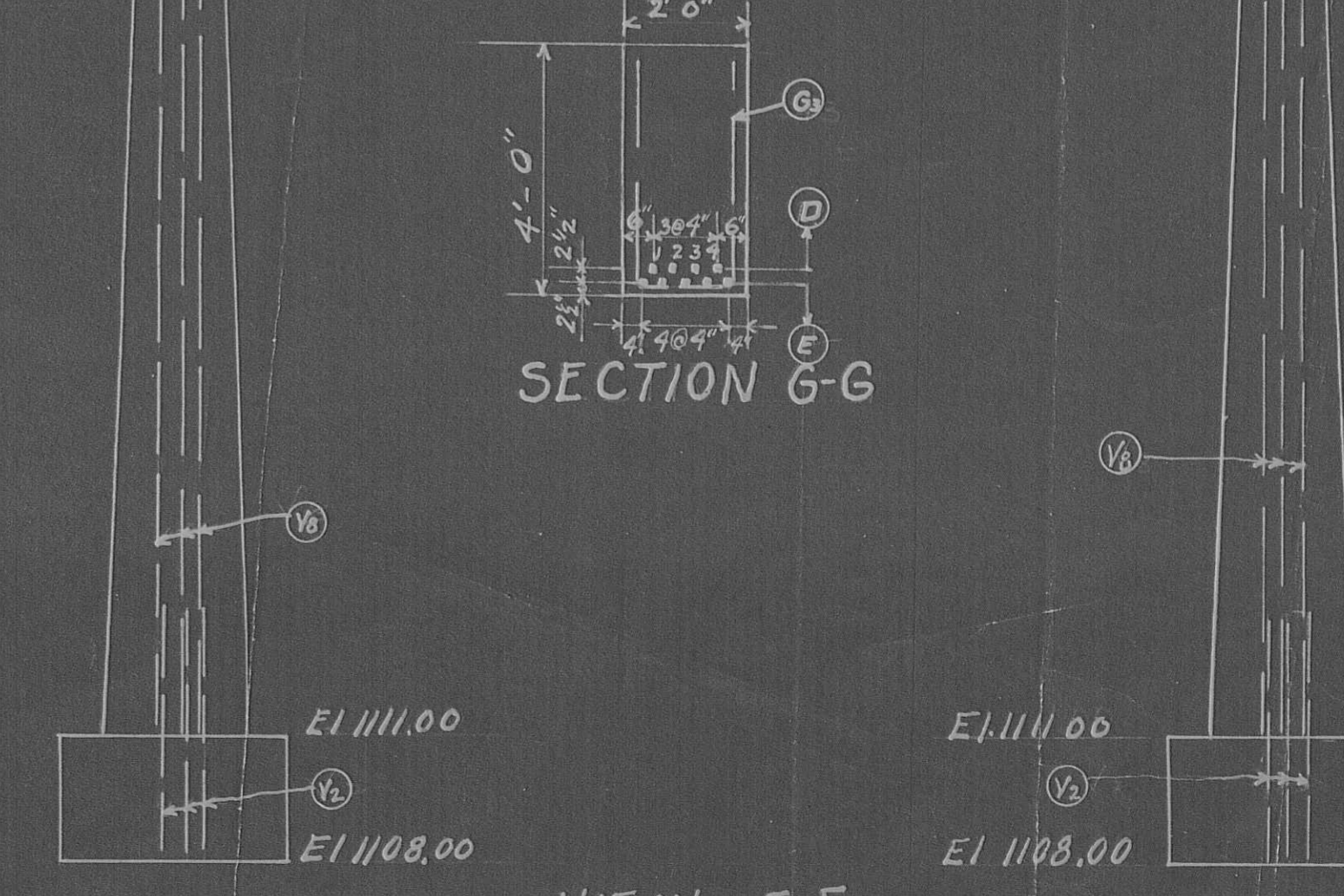
PART SIDE ELEVATION AT SOUTH END



SECTION G-G

Note: Ends of E bars to be bent in field to fit caps
Note: Z1 bars are to be bent up with bend located as shown for D bars

SECTION H-H



VIEW E.E

OVERHEAD CROSSING
at EAST LIBERTY OHIO
STA 389+31 to STA 392+09