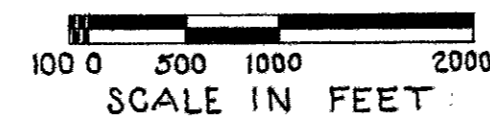


# CENTERLINE PLAT SHELBY COUNTY JACKSON TOWNSHIP LOGAN COUNTY BLOOMFIELD & WASHINGTON TOWNSHIPS



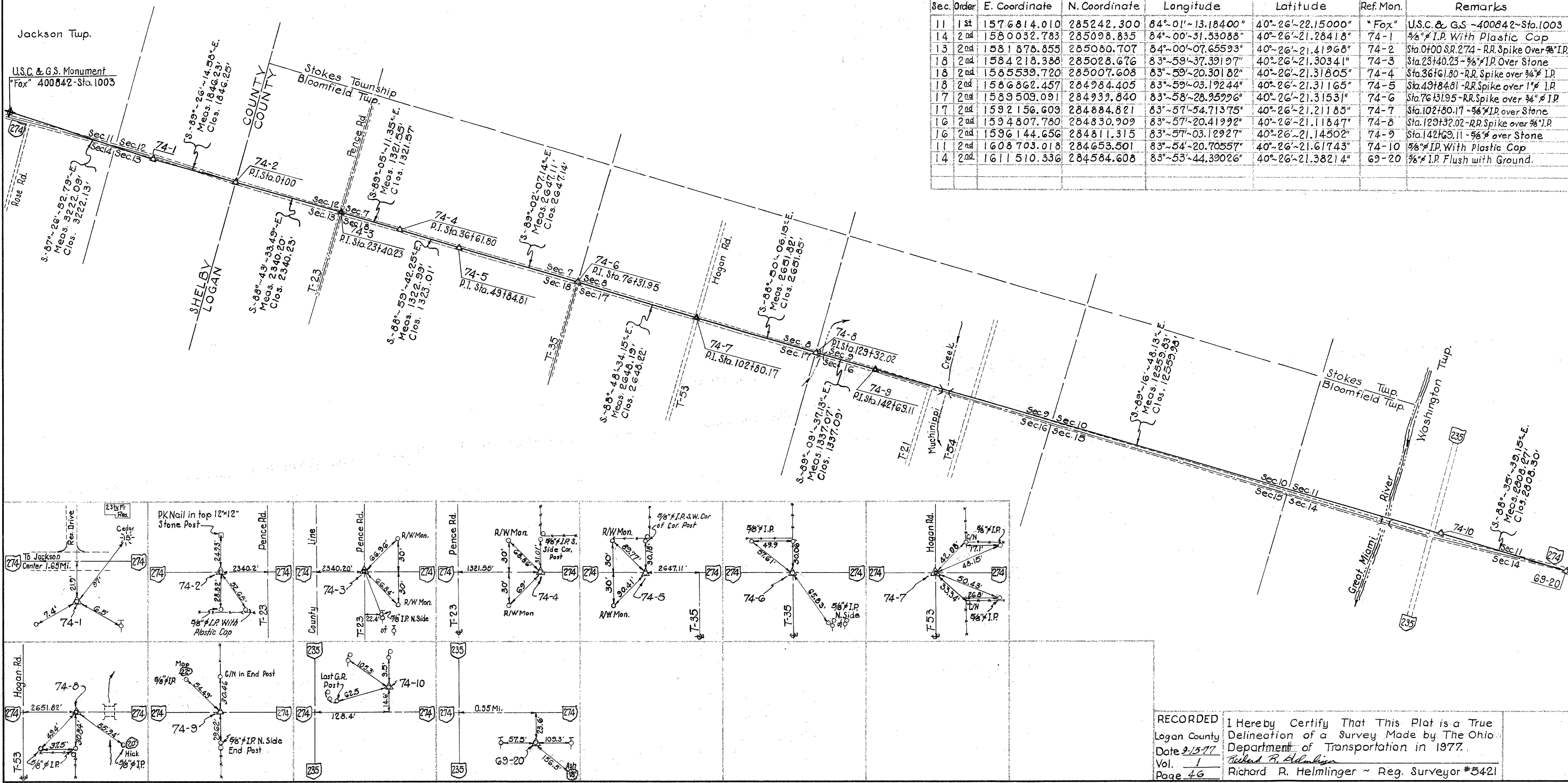
Based on Ohio State Plane Coordinates  
North Zone ~ Conversion Factor 0.9999499 ~  
All Measurements are Ground Distances ~  
All Bearing are from True North.

FHWA REGION	STATE	PROJECT	
5	OHIO		⊙

**LOGAN COUNTY**  
**LOG-274-0.00**

CLOSED TRAVERSE ~ SHELBY, CO. ~ JACKSON, TWP. ~ LOGAN, CO. ~ BLOOMFIELD, & WASHINGTON, TWPS. ~ COORDINATE TABLES

Sec.	Order	E. Coordinate	N. Coordinate	Longitude	Latitude	Ref. Mon.	Remarks
11	1st	1576814.010	285242.300	84°-01'-13.18400"	40°-26'-22.15000"	"Fox"	U.S.C. & G.S. -400842- Sta. 1003
14	2nd	1580032.783	285098.835	84°-00'-31.53088"	40°-26'-21.28418"	74-1	5/8" I.P. With Plastic Cap
13	2nd	1581878.855	285080.707	84°-00'-07.65593"	40°-26'-21.41968"	74-2	Sta. 0400 SR 274 - RR Spike Over 5/8" I.P.
18	2nd	1584218.388	285028.676	83°-59'-37.39197"	40°-26'-21.30341"	74-3	Sta. 2340.23 - 5/8" I.P. Over Stone
18	2nd	1585539.720	285007.608	83°-59'-20.30182"	40°-26'-21.31805"	74-4	Sta. 36161.80 - RR Spike over 3/4" I.P.
18	2nd	1586862.457	284984.405	83°-59'-03.19244"	40°-26'-21.31165"	74-5	Sta. 49184.81 - RR Spike over 1" I.P.
17	2nd	1589509.091	284939.840	83°-58'-28.95996"	40°-26'-21.31531"	74-6	Sta. 76131.95 - RR Spike over 3/4" I.P.
17	2nd	1592156.609	284884.821	83°-57'-54.71375"	40°-26'-21.21185"	74-7	Sta. 102180.17 - 5/8" I.P. over Stone
16	2nd	1594807.780	284830.909	83°-57'-20.41992"	40°-26'-21.11847"	74-8	Sta. 129132.02 - RR Spike over 5/8" I.P.
16	2nd	1596144.656	284811.315	83°-57'-03.12927"	40°-26'-21.14502"	74-9	Sta. 142169.11 - 5/8" over Stone
11	2nd	1608703.018	284653.501	83°-54'-20.70557"	40°-26'-21.61743"	74-10	5/8" I.P. With Plastic Cap
14	2nd	1611510.336	284584.608	83°-53'-44.39026"	40°-26'-21.38214"	69-20	5/8" I.P. Flush with Ground.



RECORDED  
Logan County  
Date 2-15-77  
Vol. 1  
Page 46

I Hereby Certify That This Plat is a True  
Delineation of a Survey Made by The Ohio  
Department of Transportation in 1977.  
Richard R. Helmlinger  
Richard R. Helmlinger ~ Reg. Surveyor #5421