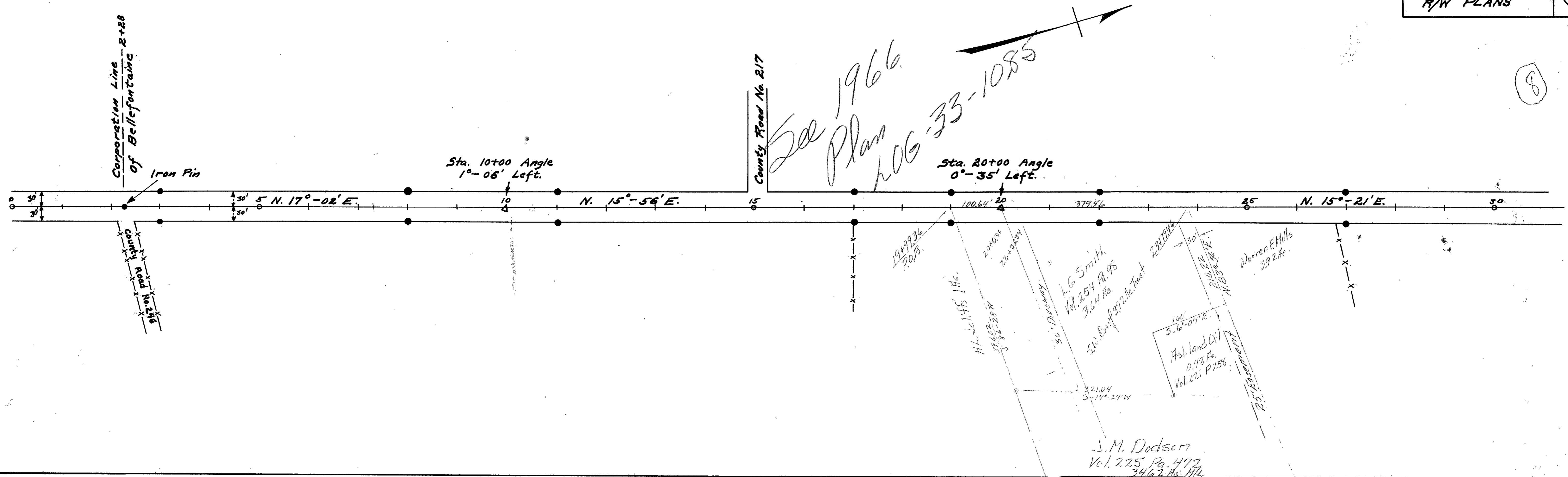


● Indicates R/W Monuments.

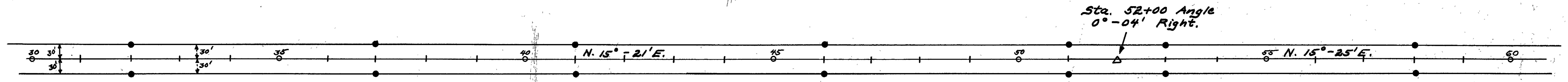
81-7

81-7

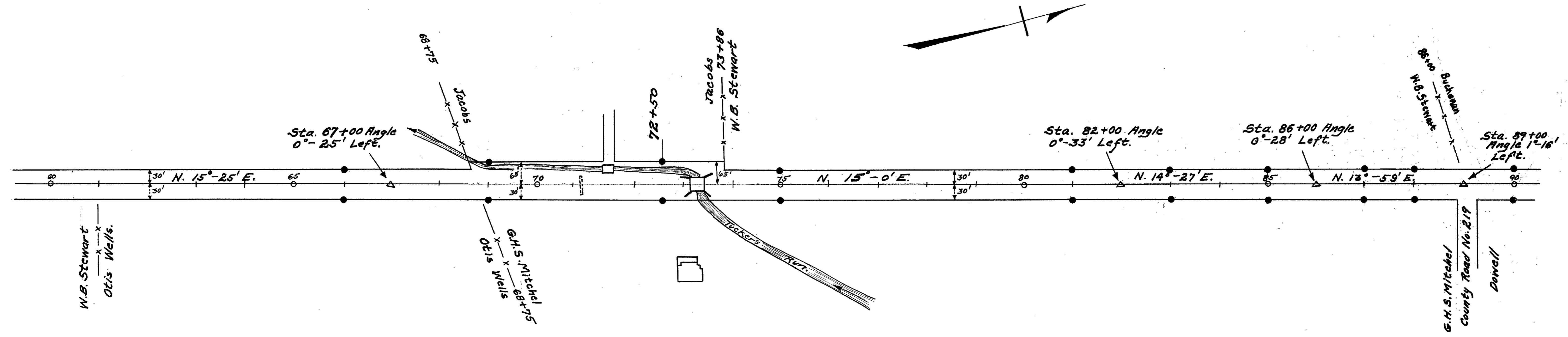


Field Notes Book 520
Logan County Surveyor's
Office

Bridge
L068-100
near Sta. 43
T.M. at 418.46

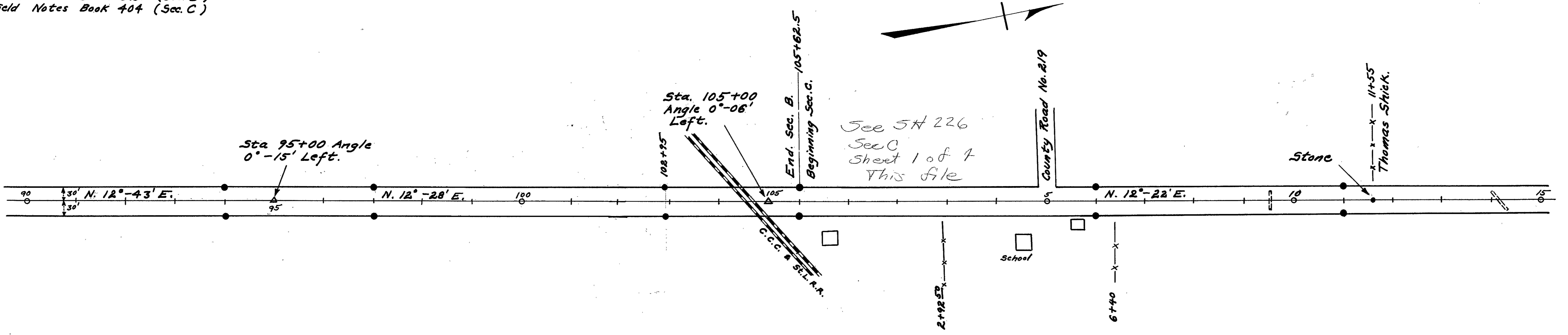


● Indicates R/W Monuments.

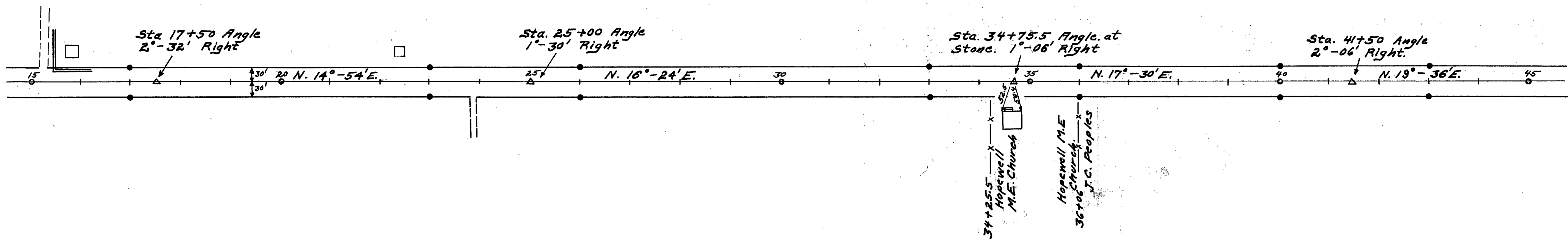


Field Notes Book 520 (Sec. B)
Field Notes Book 404 (Sec. C)

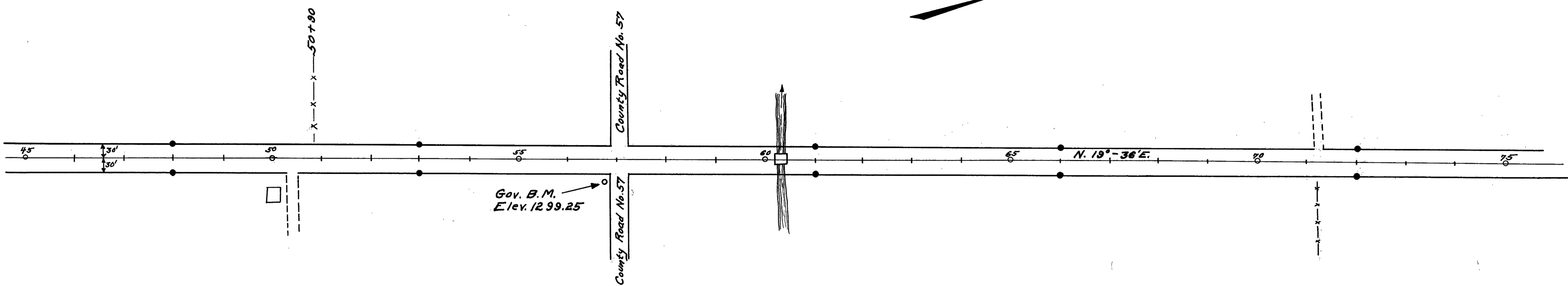
See SH 226
Sec C
Sheet 1 of 7
This file



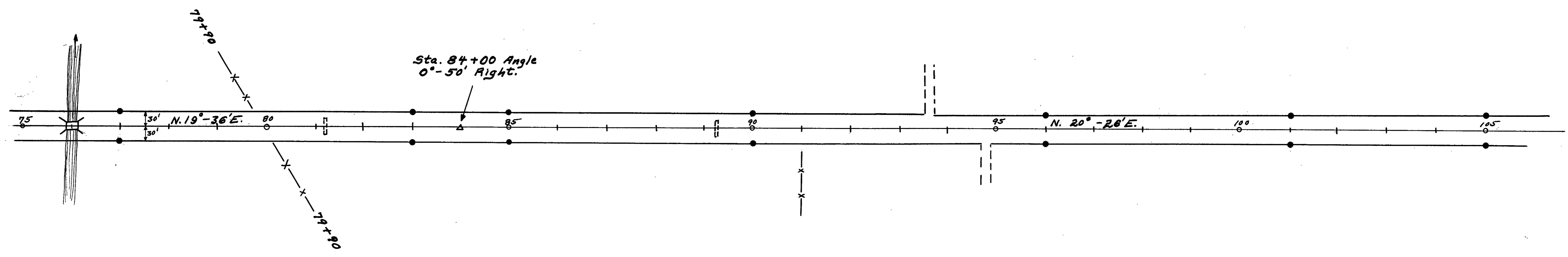
• Indicates R/W Monuments.



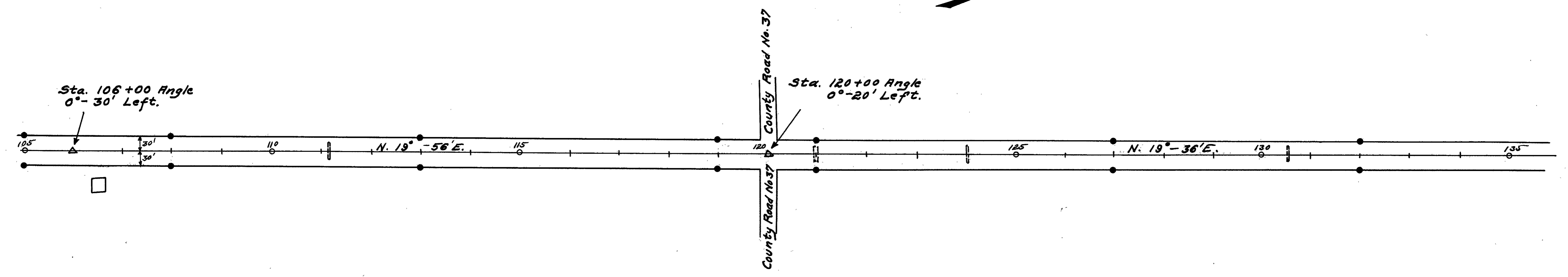
Field Notes Book 404



• Indicates R/W Monuments.

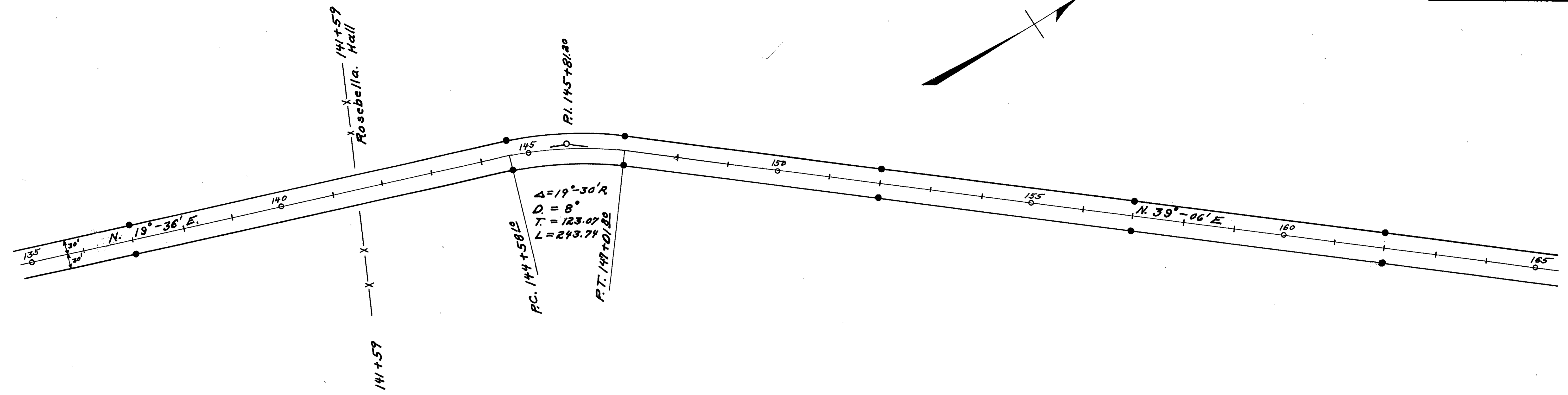


Field Notes Book 404

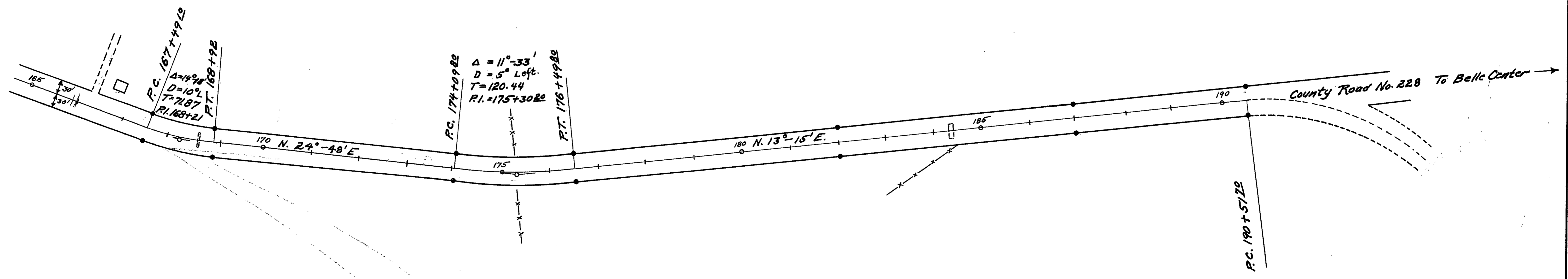


8-17

● Indicates R/W Monuments



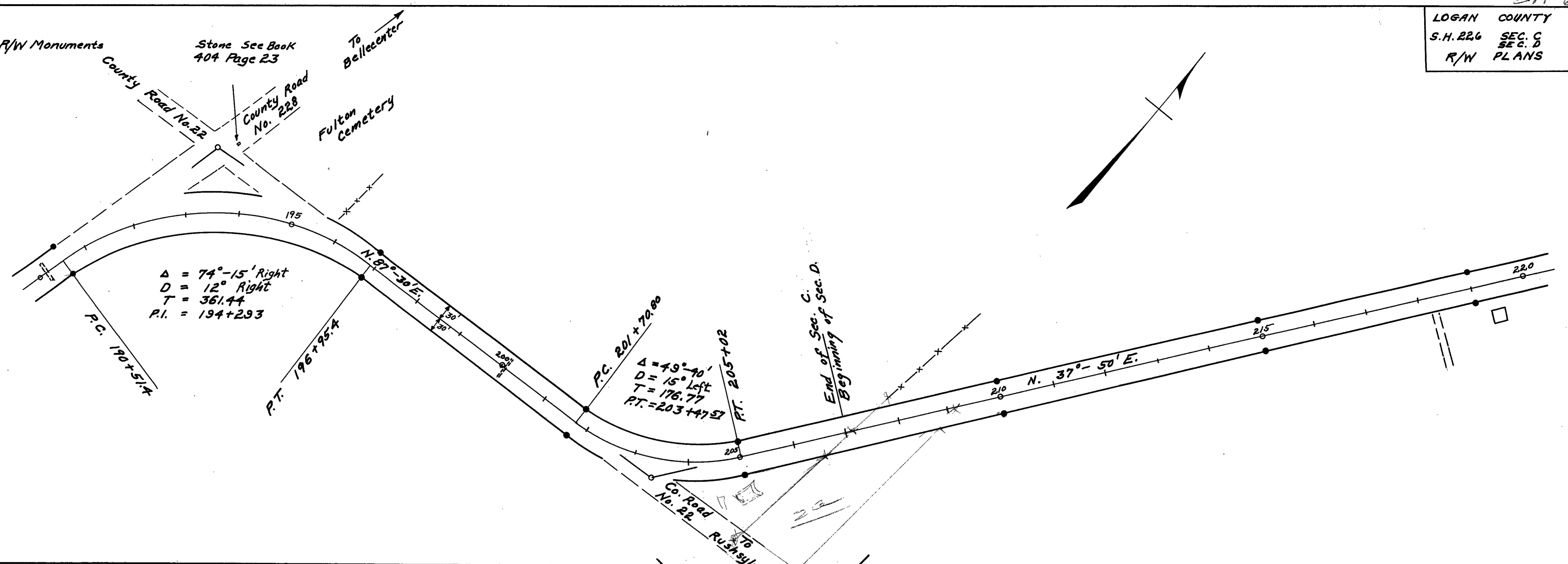
Field Notes Book 404



0-78

• Indicates R/W Monuments

Stone See Book 404 Page 23



To Bellecenter
Fulton Cemetery

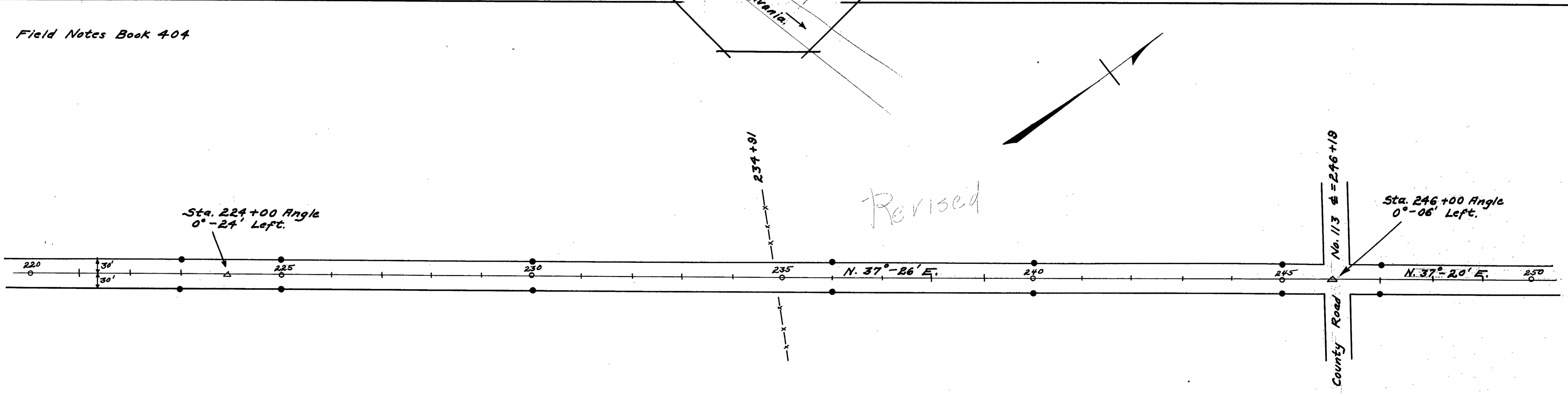
$\Delta = 74^{\circ}-15'$ Right
 $D = 361.44$
 $T = 194+293$
 P.C. = 190+51.4
 P.T. = 196+95.4

$\Delta = 49^{\circ}-40'$
 $D = 176.77$
 $T = 203+47.9$
 P.C. = 201+70.80
 P.T. = 205+02

End of Sec. C.
Beginning of Sec. D.

N. 37°-50' E.

Field Notes Book 404



Sta. 224+00 Angle 0°-24' Left.

Revised

Sta. 246+00 Angle 0°-06' Left.

N. 37°-26' E.

N. 37°-20' E.

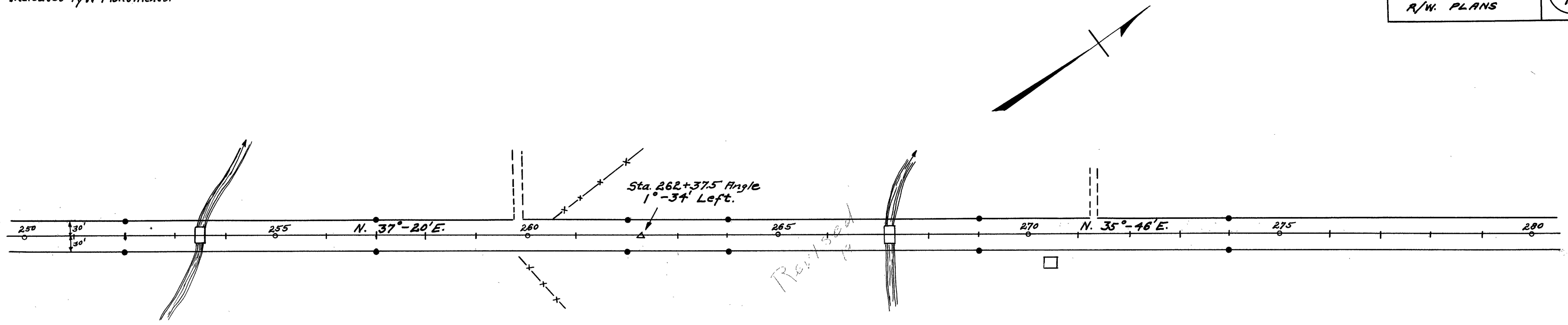
County Road No. 113 # = 246+19

SR-68

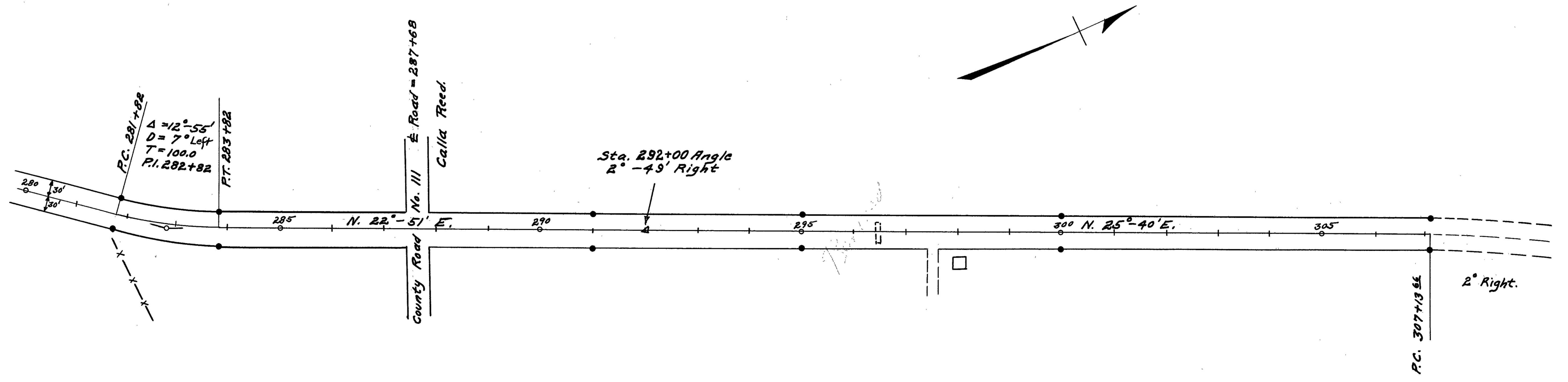
LOGAN COUNTY
S.H. 226 SEC. D
R/W PLANS

7
10

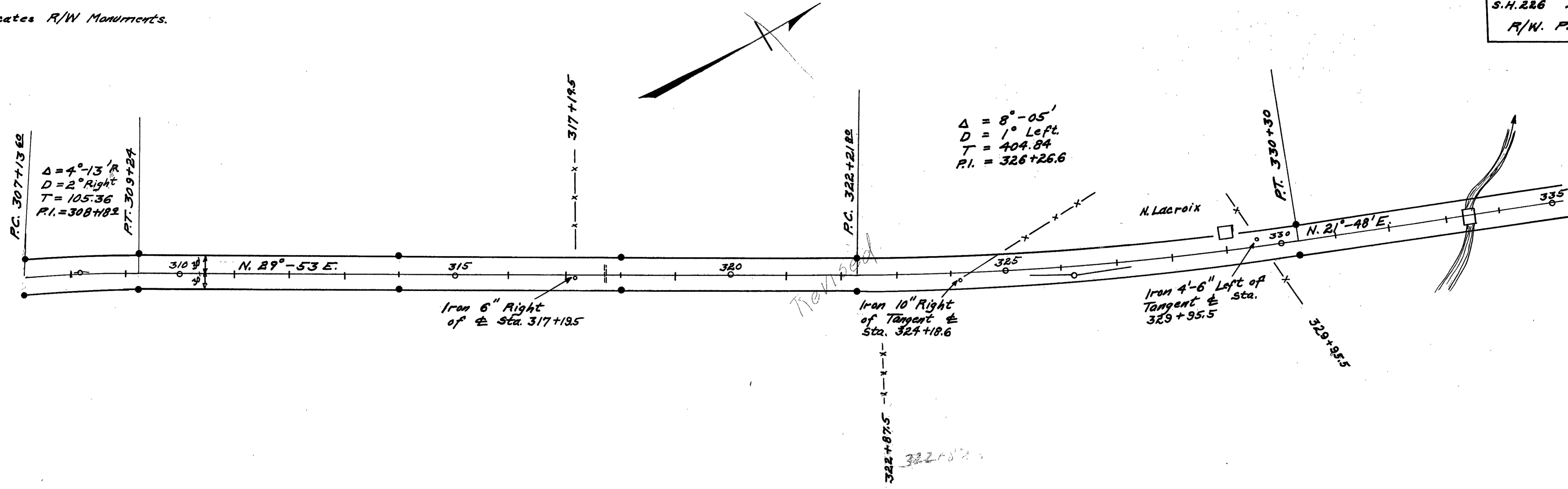
● Indicates R/W Monuments.



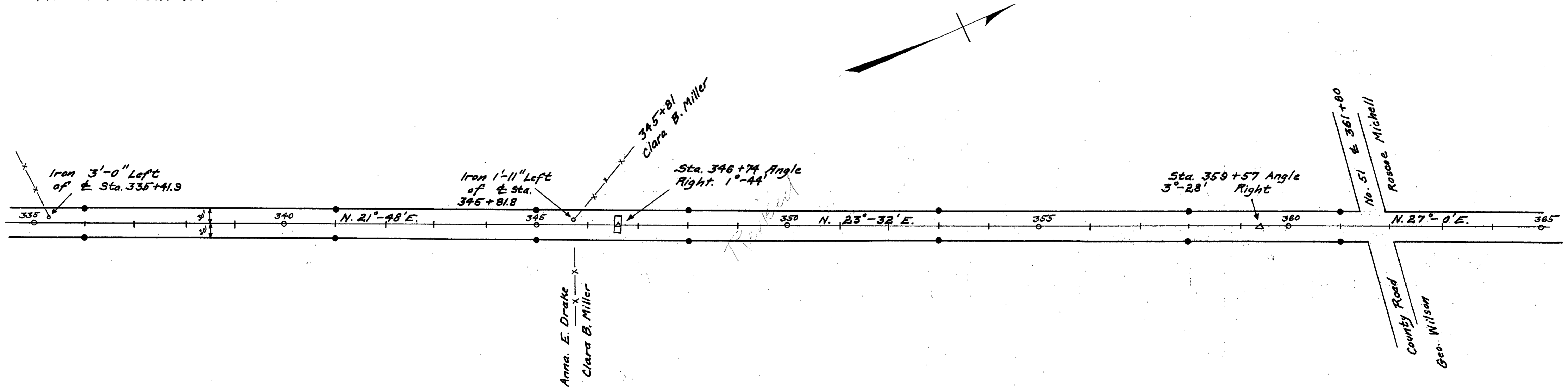
Field Notes Book 404



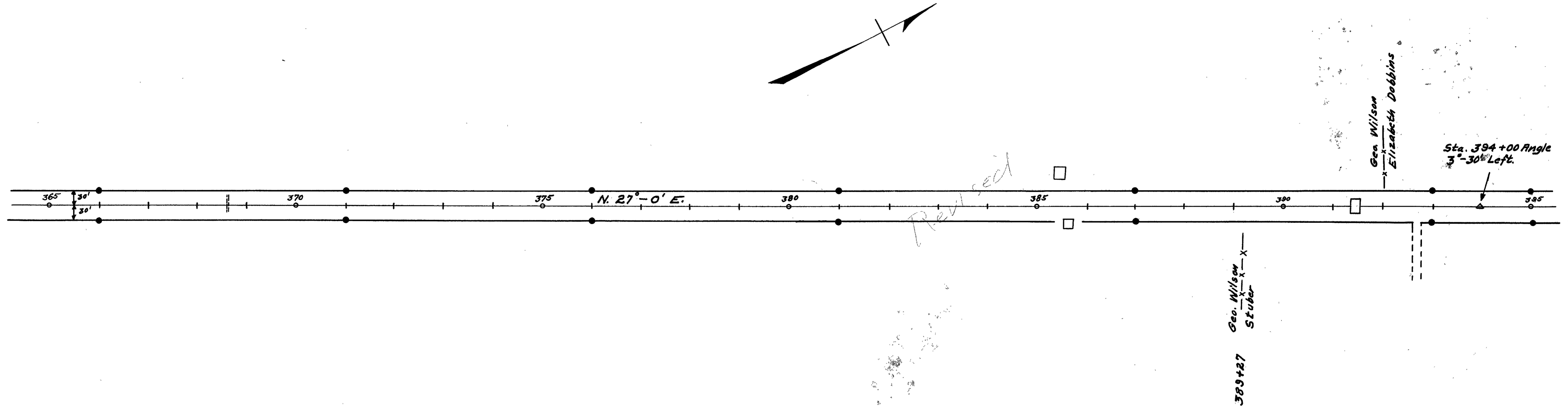
• Indicates R/W Monuments.



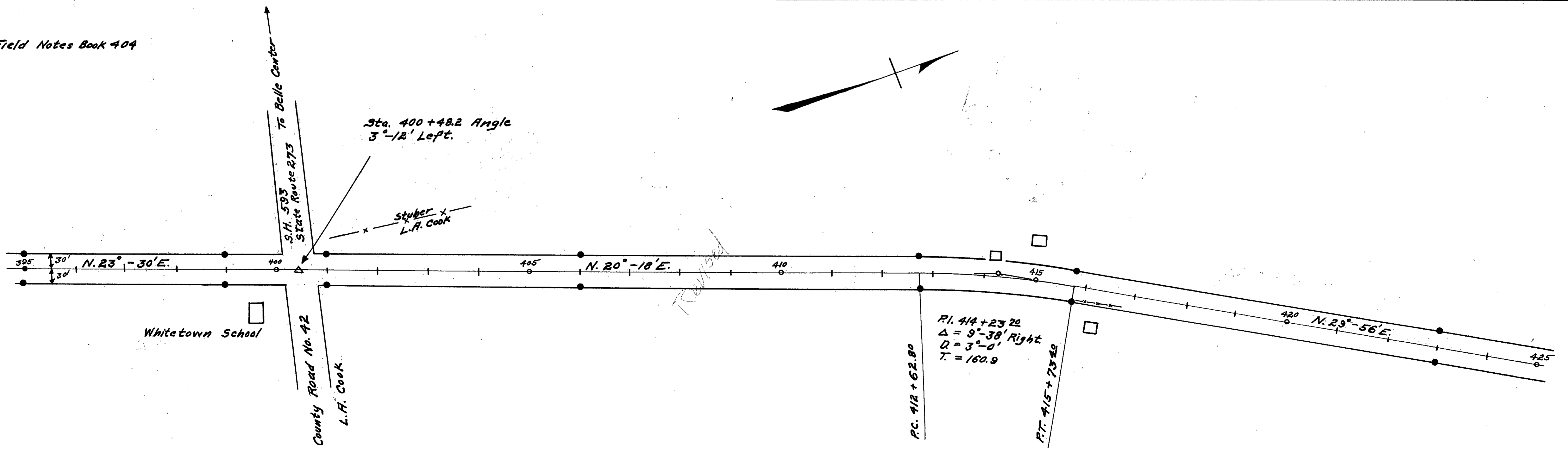
Field Notes Book 404



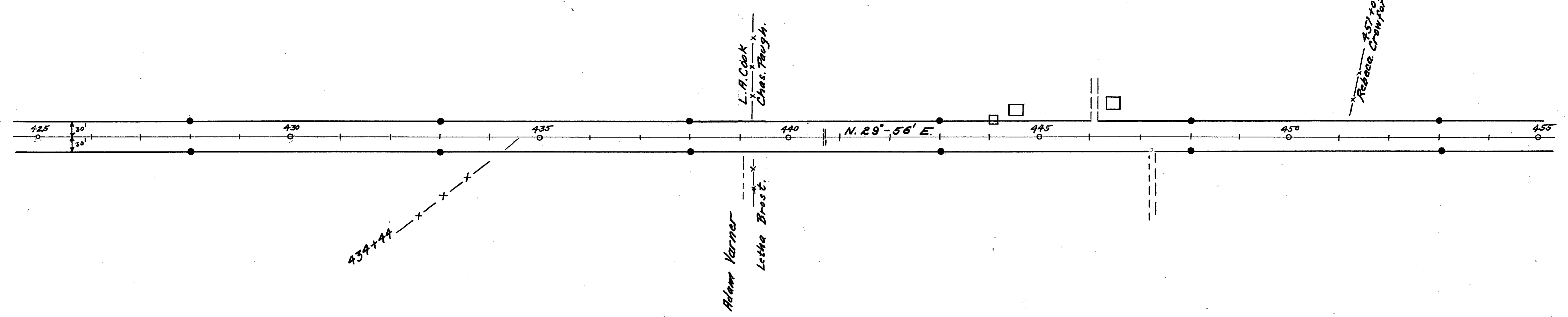
● Indicates R/W Monuments



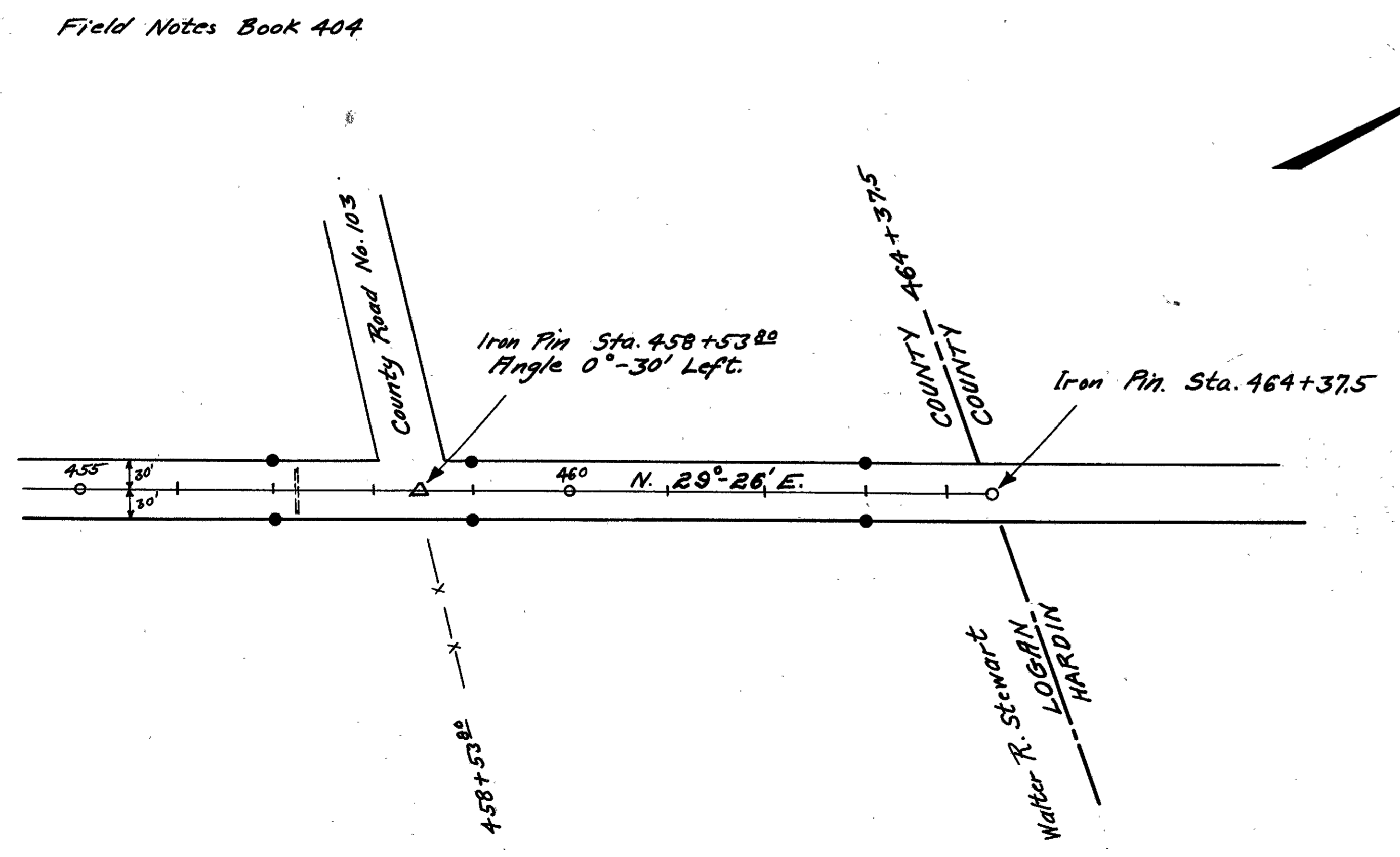
Field Notes Book 404



● Indicates R/W Monuments



Field Notes Book 404



105 + 62.5 Sec. B
464 + 37.5 Sec. C. & Sec. D

570 + 00.0 = 10.7954 Miles