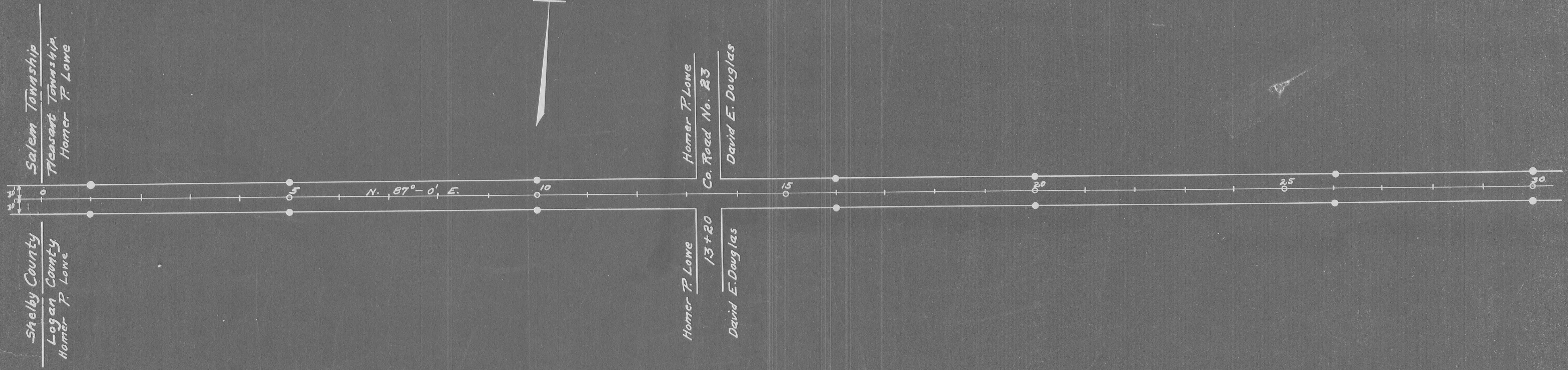


• Indicates R/W Monuments



Field notes in Logan  
County Surveyors  
Book No. 402

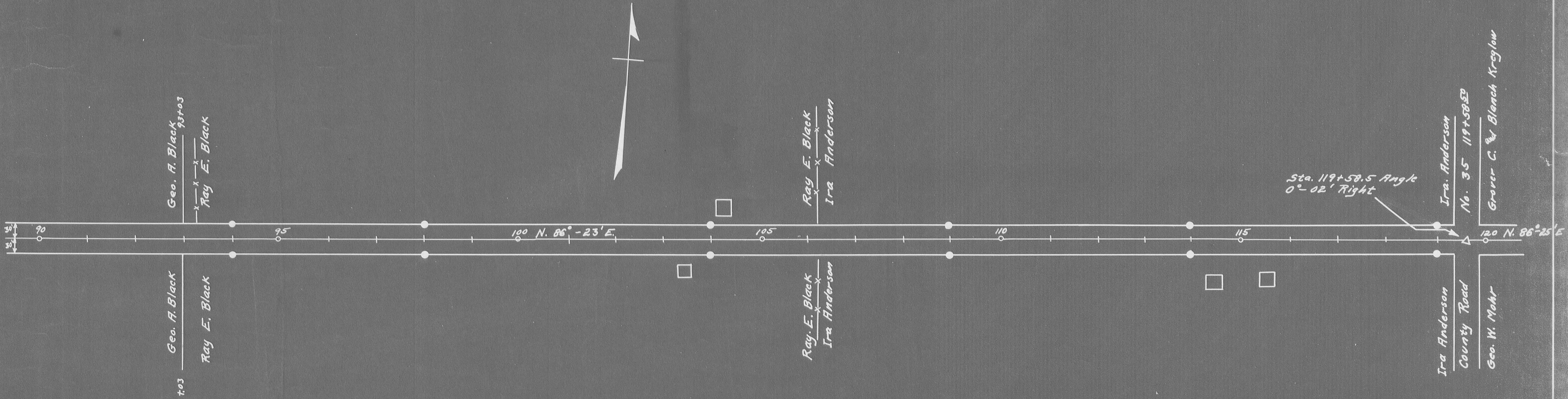
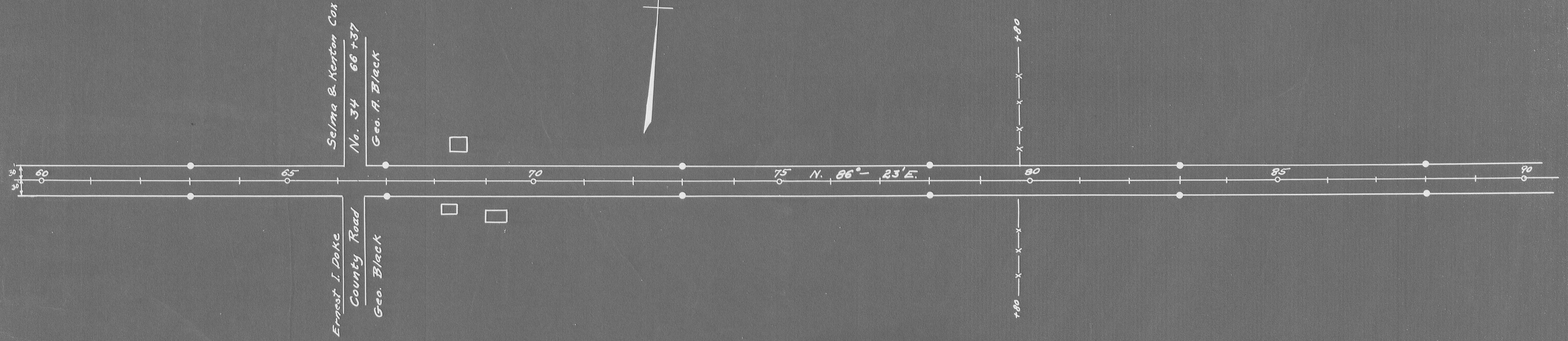


L-20

L-20

L-20

• Indicates R/W Monuments.

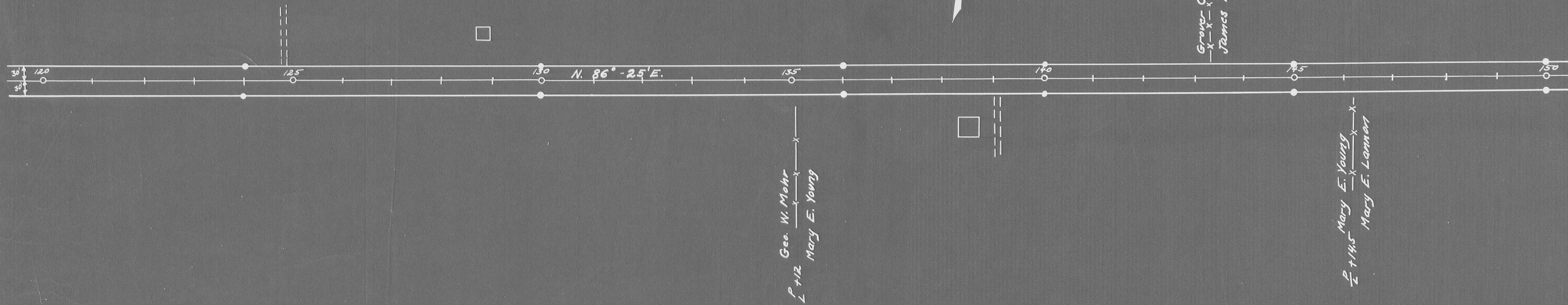


L-20

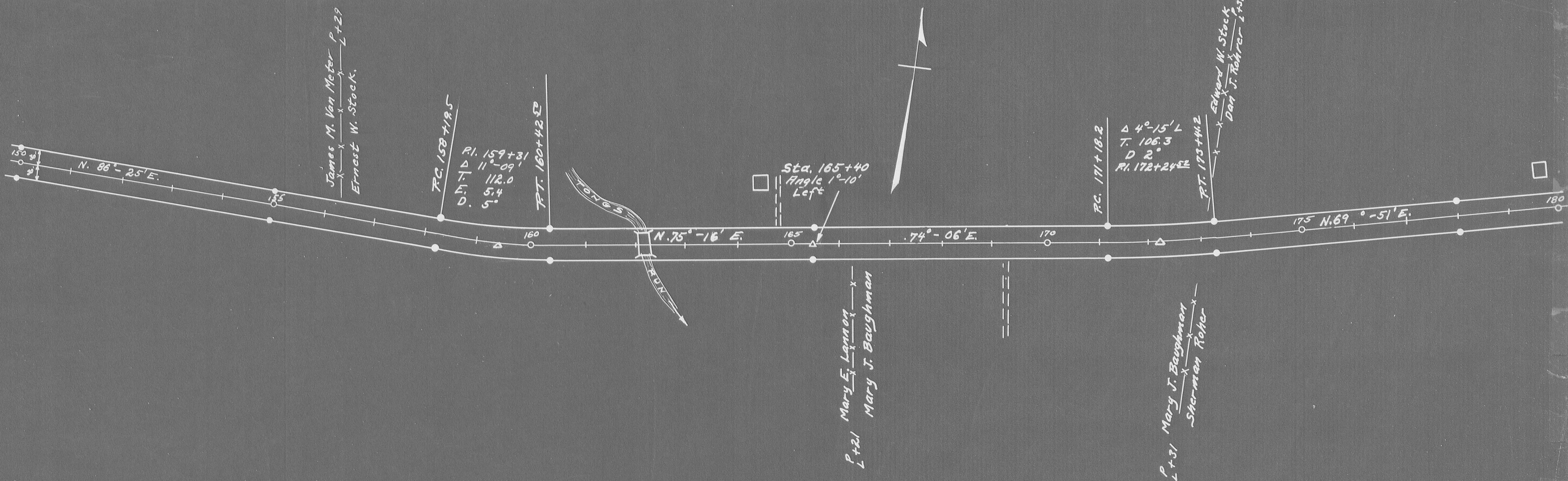
L-20

Field notes in Logan  
County Surveyors Book  
No. 402

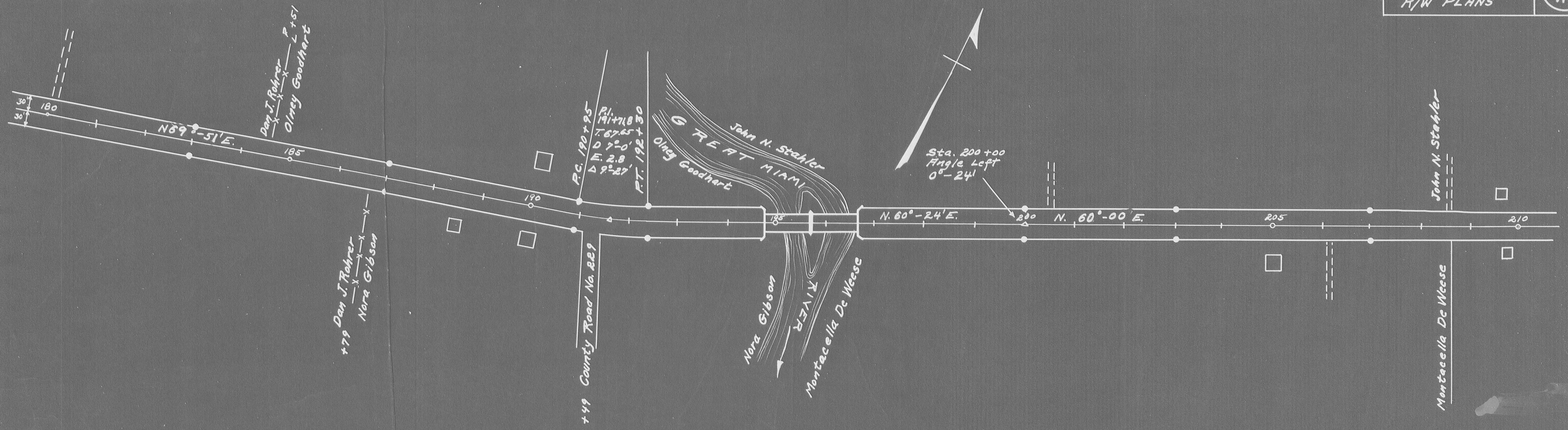
● INDICATES R/W MONUMENTS



Field Notes in Logan  
County Surveyor's Book  
No. 402

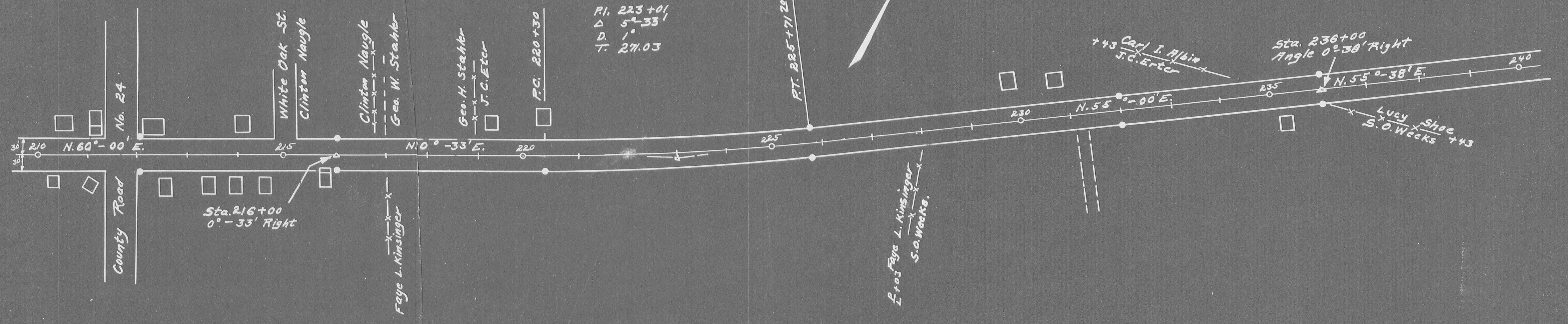


• Indicates R/W Monuments



Field Notes in Logan County Surveyor's Book No. 702.

LOGANVILLE

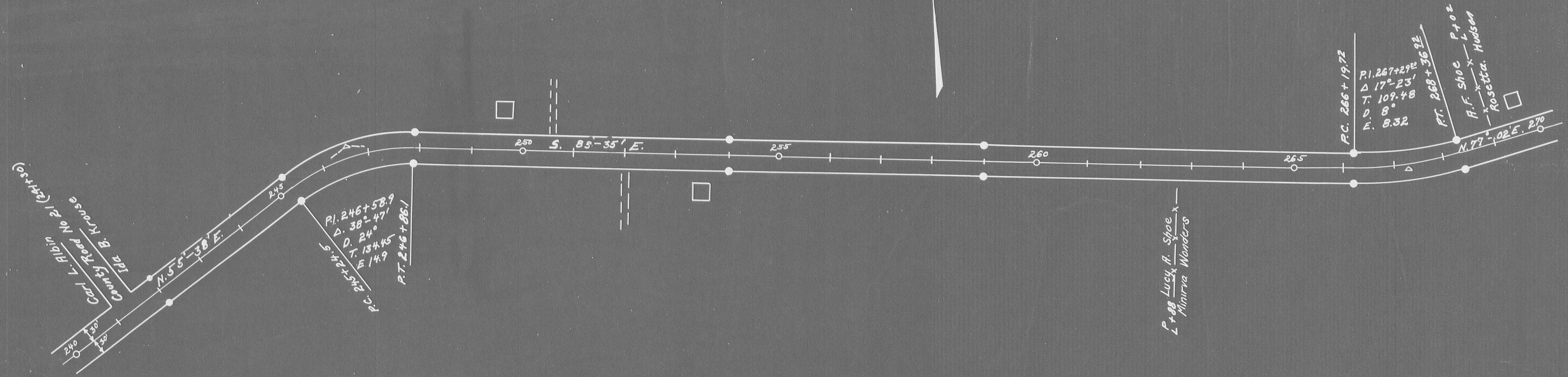


● INDICATES R/W MONUMENTS

LOGAN COUNTY  
S.H. 234 SEC. I-J  
R/W PLANS

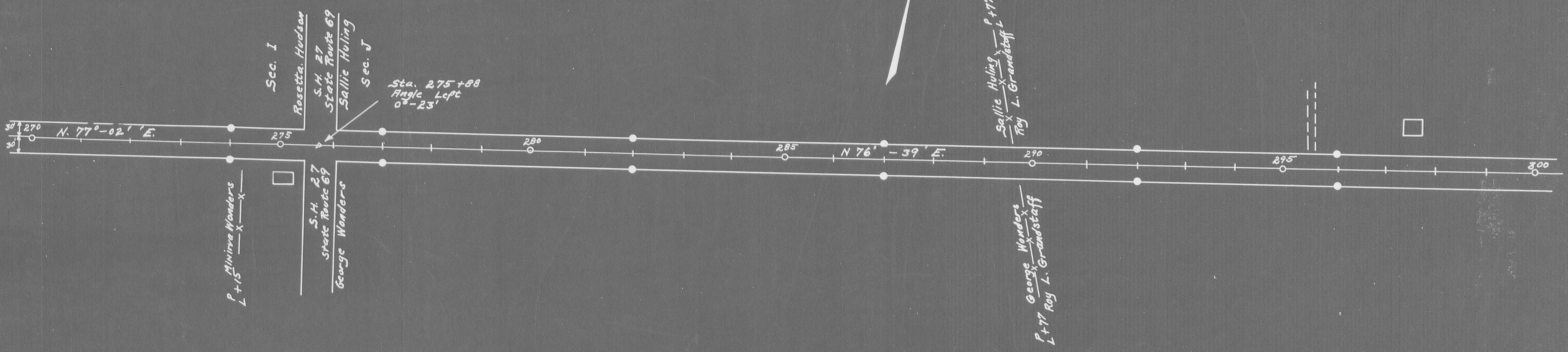
5  
11

4-20

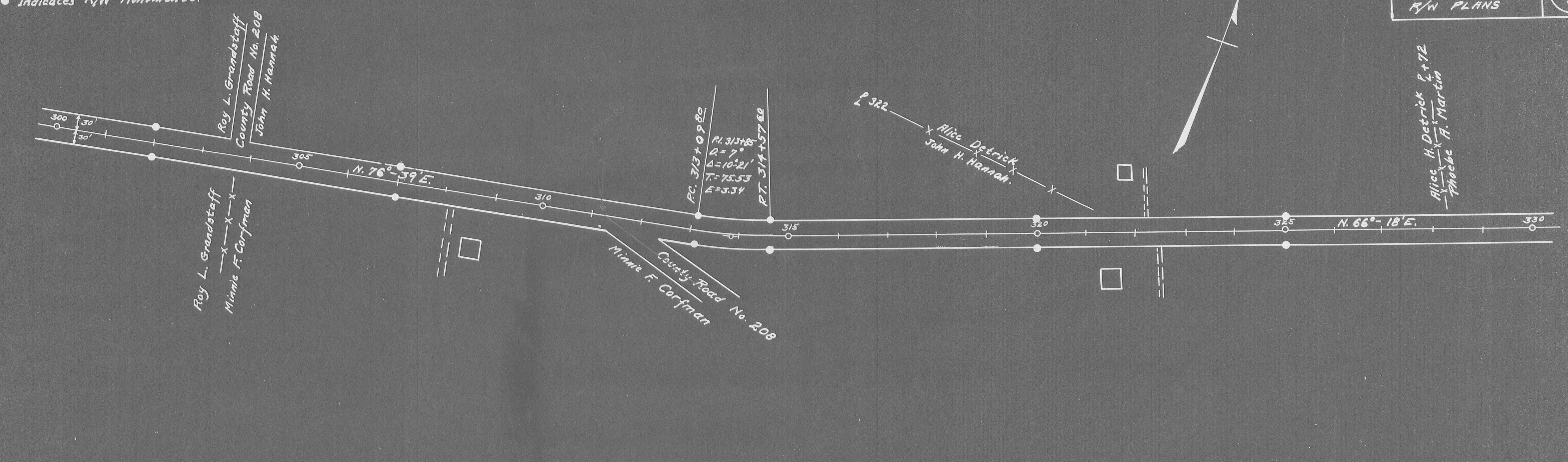


Field Notes in Logan  
County Surveyor's Book  
No. 402

Sta. 275+88 End of Sec. I.  
Sta. 275+88 Beginning of Sec. J.



● Indicates R/W Monuments.



Field Notes in Logan County Surveyors Book No. 402

