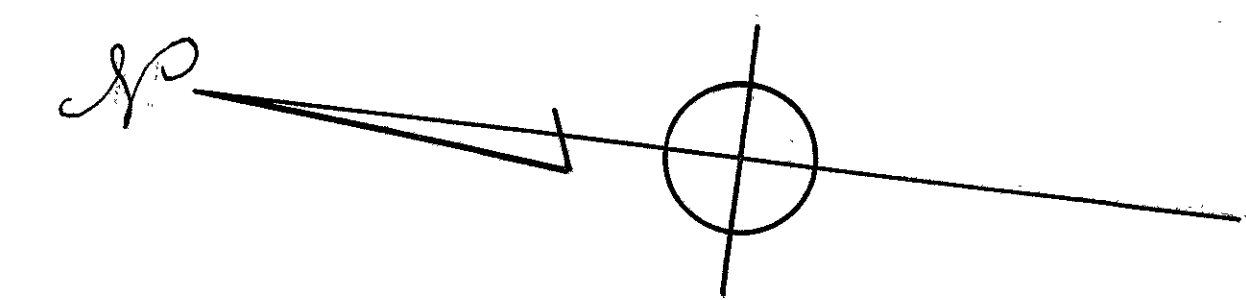
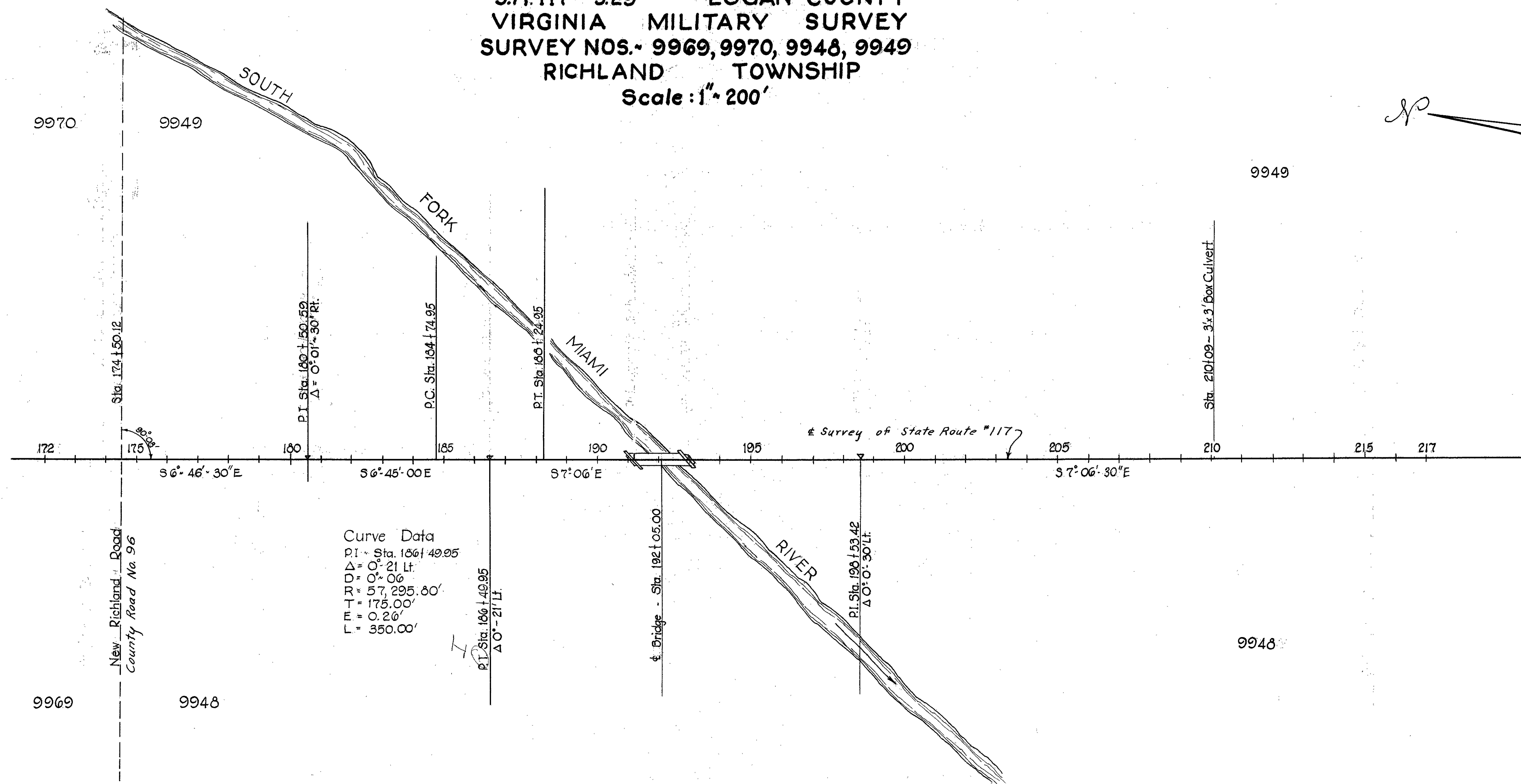


FED. RD. DIVISION	STATE	PROJECT	TYPE FUNDS
2	OHIO		

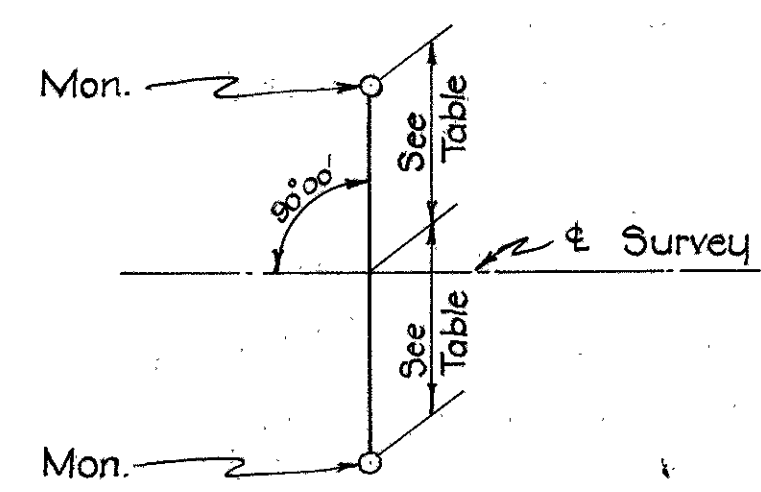
LOGAN COUNTY
LOG. 117~ 3.29

LOCATION PLAN

S.R. 117~ 3.29 LOGAN COUNTY
VIRGINIA MILITARY SURVEY
SURVEY NOS. 9969, 9970, 9948, 9949
RICHLAND TOWNSHIP
Scale: 1" = 200'



Curve Data
 P.I. = Sta. 186+49.95
 $\Delta = 0^\circ 21' Lt.$
 $D = 0^\circ 06'$
 $R = 57,295.80'$
 $T = 175.00'$
 $E = 0.26'$
 $L = 350.00'$



DETAIL FOR SETTING
REFERENCE POINTS

STATION	Distance from \pm	
	Lt.	Rt.
174+00.00	18'	18'
180+00.00	18'	18'
P.I. 186+49.95	18'	18'
190+50	18'	18'
195+00.00	18'	18'
P.I. 196+53.42	18'	18'
205+00.00	18'	18'
210+00.00	18'	18'
215+00.00	18'	18'

Completed March 4 1955 By: Joseph K. Allen, E.H.I.F.

APPROVED: 7-2-52
D.W. Gruebmeyer LOCATION & DESIGN ENGINEER
 REG. PROFESSIONAL ENGINEER NO. 1336

V.M.S. 9970

William A. Shaw

V.M.S. 9949
Richland Twp.

FED. RD. DIVISION	STATE	PROJECT	TYPE FUNDS
2	OHIO		

1
2

LOGAN COUNTY LOG. 117-3.29 R/W PLAN

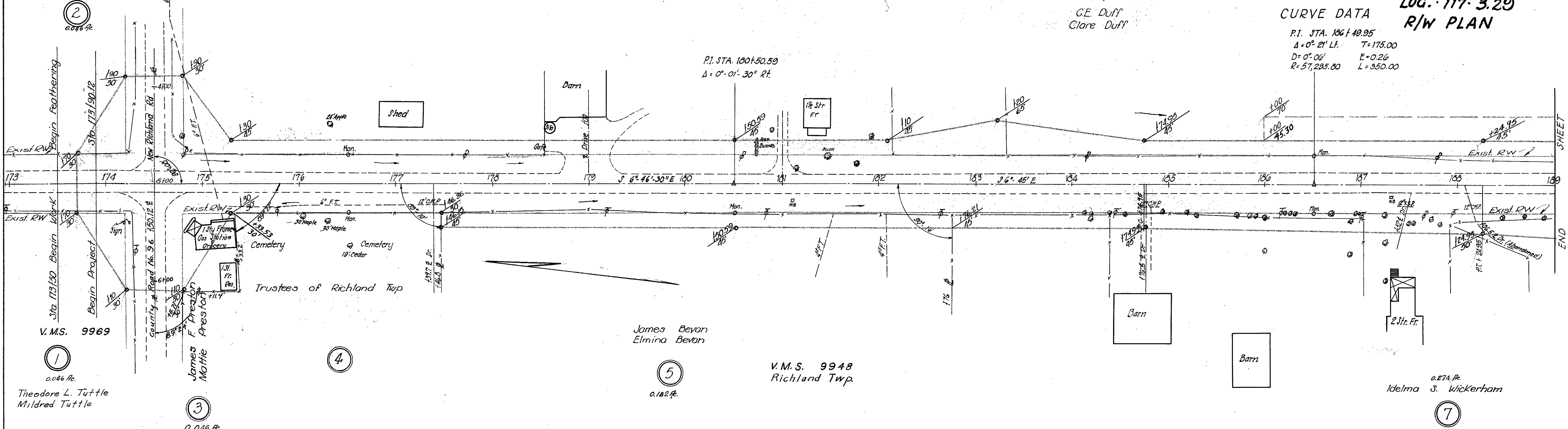
CURVE DATA

P.I. STA. 186+40.95
 $\Delta = 0^\circ 21' 15''$ T=175.00
 $D = 0^\circ 06'$ E=0.26
 $R = 57,295.80$ L=350.00

6

1.60 Ac.
C.E. Duff
Clare Duff

P.I. STA. 180+50.59
 $\Delta = 0^\circ 01' 30''$ Rt.



V.M.S. 9969

Theodore L. Tuttle
Mildred Tuttle

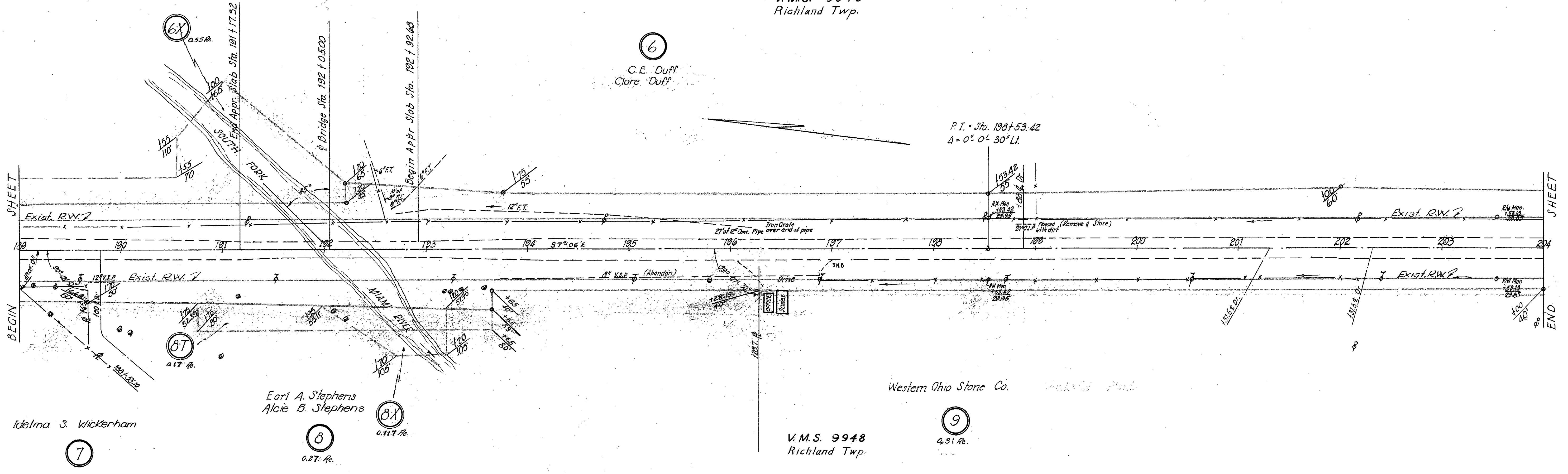
V.M.S. 9948
Richland Twp.

Idelma S. Wickerham

V.M.S. 9949
Richland Twp.

6
C.E. Duff
Clare Duff

P.I. = Sta. 198+53.42
 $\Delta = 0^\circ 0' 30''$ Lt.



Idelma S. Wickerham

Earl A. Stephens
Alcie B. Stephens

Western Ohio Stone Co.

V.M.S. 9948
Richland Twp.

FED. RD. DIVISION	STATE	PROJECT	TYPE FUNDS
2	OHIO		

2
2

LOGAN COUNTY
LOG-117-3.29
R/W PLAN

V.M.S. 9949
 Richland Twp.

10
 0.32 A.R.

Errett Baier
 Helen M. Baier

6

C.E. Duff
 Clore Duff

WESTERN OHIO STONE CO.

9

Hugh Leonard Roebuck
 Carrie Ethel Roebuck

11
 0.375 A.R.

V.M.S. 9948
 Richland Twp.

R/W Monuments Set Mar. 4, 1955

