

STATE OF OHIO DEPARTMENT OF TRANSPORTATION

LOGAN COUNTY LOG-347-0.00	OHIO FHWA- REGION 5
FEDERAL PROJECT	

R/W -
Acquiring. W/W State

LOG-347-0.00 PERRY TOWNSHIP LOGAN COUNTY

DESIGN DESIGNATION

Current A.D.T. (1989)	=	5040
Design Year A.D.T. (2008)	=	7050
D.H.V. (2008)	=	705
D	=	60%
T	=	22%
Design Speed	=	55 m.p.h.
Legal Limit	=	55 m.p.h.
Functional Classification	=	Rural Local

LIMITED ACCESS

This improvement is especially designed for through traffic and has been declared a limited access highway or freeway by action of the Director in accordance with the provisions of Section 5511.02 of the Revised Code of Ohio.

CONVENTIONAL SIGNS

County Line	-----	Limited Access (only)	-----LA-----
Township Line	-----	Right of Way (only)	-----RW-----
Section Line	-----	Limited Access & Right of Way	-----LA&RW-----
Corporation Line	----- or -----	Existing Right of Way	-----
Fence Line (existing)	-x-x-	Property Line (in existing fence)	-x-x-
Center Line	-----	Railroad	----- or -----
Trees	⊙	Stumps	⊘
Utility Poles: Telephone	⊕	Power	⊖
		Light	⊙

INDEX OF SHEETS

Title Sheet	1
Schematic Plan	2 and 3
Typical Sections	4 thru 7
General Notes	8 thru 10
Maintenance of Traffic	11
General Summary	12 and 13
Pavement Calculations	14
Estimated Quantities	15 thru 17
Transition Details	18 and 19
Intersection Details	20 thru 22
Superelevation Tables	23 and 24
Plan, Profile and Cross-Sections - State Route 347	25 thru 88
Plan, Profile and Cross-Sections - CR 271 and TRC Entrance	89 thru 100
Plan, Profile and Cross-Sections - Existing County Road 152	101 thru 103
Existing County Road 271 Quantities	104
Drainage Structures Under 20'	105 thru 114
Signing and Pavement Marking	115 thru 1

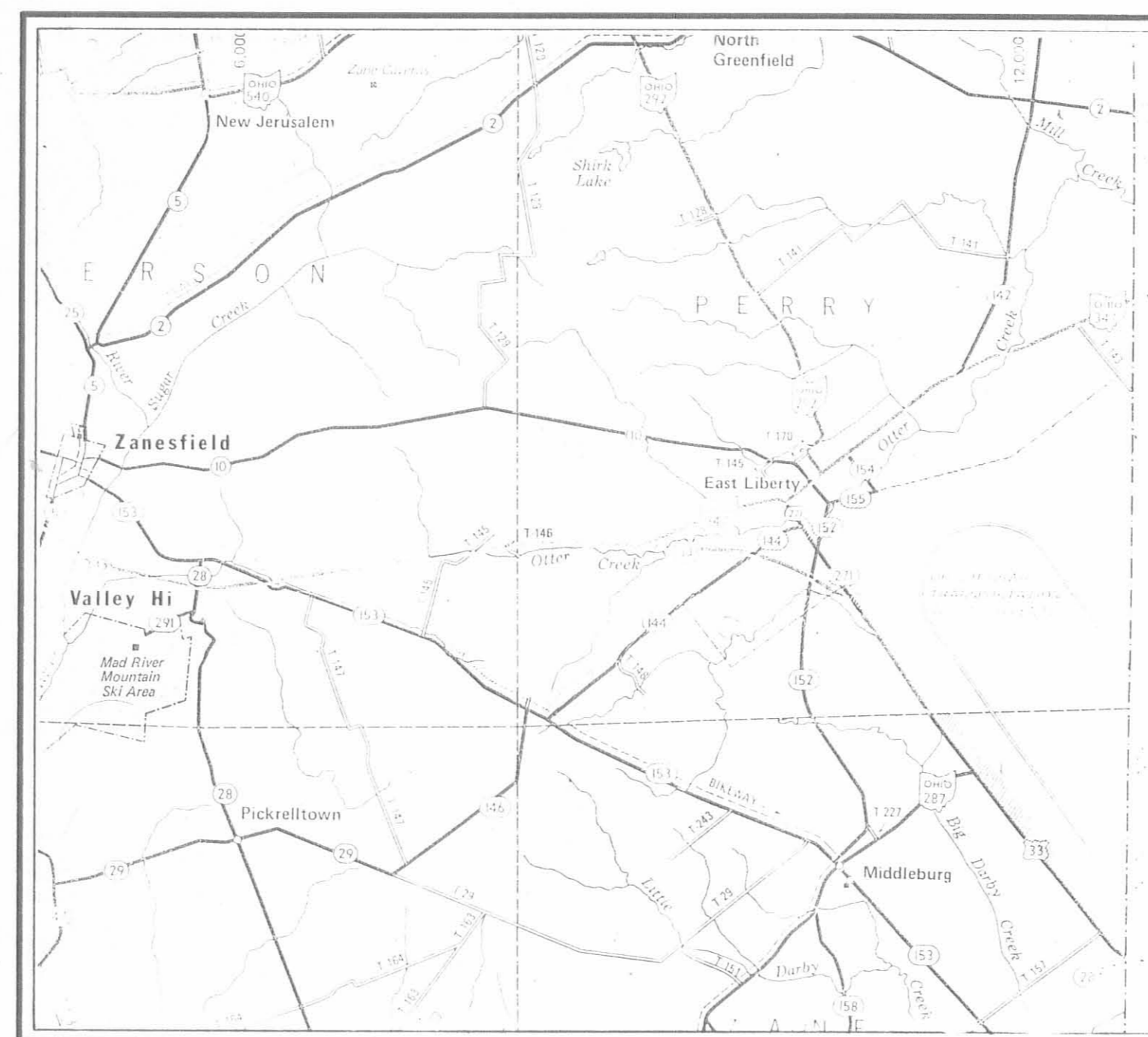
R/W only Index

LINE DATA

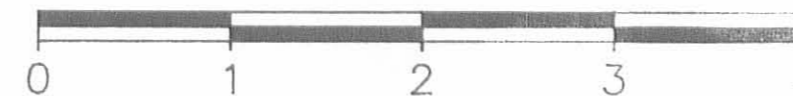
Begin Project	Sta. 100+00
End Project	Sta. 241+00
Length of Project	14100.00 Lin. Ft. or 2.67 Miles
Begin Work	Sta. 100+00
End Work	Sta. 242+54
Length of Work	14254.00 Lin. Ft.
Add Work - U.S. 33 - Sta. 1381+92 to Sta. 1394+30	1238.00 Lin. Ft.
Add Work - C.R. 271 - Sta. 0+00 to Sta. 12+50	1250.00 Lin. Ft.
Add Work - TRC Entrance - Sta. 10+00 to Sta. 16+21.50	621.50 Lin. Ft.
Total Length of Work	17363.50 Lin. Ft. or 3.29 Miles

Plan Prepared By:
DISTRICT NO. 7
OHIO DEPARTMENT OF
TRANSPORTATION

SEAL

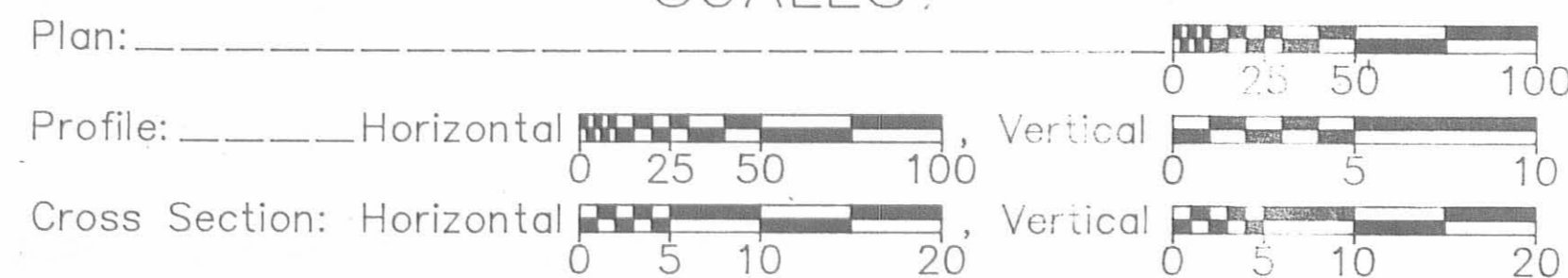


LOCATION MAP
SCALE IN MILES



Portion to be Improved -----
State & Federal Routes -----
Other Roads -----

SCALES



END PROJECT
STA. 241+00

BEGIN PROJECT
STA. 100+00

UNDERGROUND UTILITIES
TWO WORKING DAYS
BEFORE YOU DIG
Call... 800-362-2764 (Toll Free)
OHIO UTILITIES PROTECTION SERVICE
NON-MEMBERS
MUST BE CALLED DIRECTLY

SUPPLEMENTAL SPECIFICATIONS	
846	11-24-86
955	6-3-78
847	10-17-83
947	10-17-83

SUPPLEMENTAL PRINTS OF STANDARD CONSTRUCTION DRAWINGS			
BP-3	12-6-76	HL-50.11	5-1-87
BP-4	10-1-87	TC-41.20	3-26-79
BP-5	10-1-87	TC-42.10	8-19-77
CB-2-2A&B	5-1-79	HW-4A	4-1-80
I-1	12-18-84	HW-4B	4-1-80
		TC-52.10	4-3-79
		TC-52.20	4-3-79
		TC-71.10	4-9-79
F-1	11-10-83	MC-1	6-13-69
F-6	5-1-76	MC-4	7-26-76
		MC-11	8-1-78
GR-1	1-11-85		
GR-2B	2-5-85	MT-99.10	11-14-86
		MT-99.20	11-14-86

1987 SPECIFICATIONS

The standard specifications of the State of Ohio, Department of Transportation, including changes and supplemental specifications listed in the proposal shall govern this improvement.

I hereby approve these plans and declare that the making of this improvement will require the closing of the highway to traffic and that detours will be provided as indicated on the plans.

Approved _____
Date _____ District Deputy Director of Transportation

Approved _____
Date _____ Assistant Deputy Director, Real Estate

Approved _____
Date _____ Engineer, Bureau of Bridges and Structural Design

Approved _____
Date _____ Chief Engineer,

Approved _____
Date _____ Director, Department of Transportation

DEPARTMENT OF TRANSPORTATION
FEDERAL HIGHWAY ADMINISTRATION
APPROVED:

DIVISION ADMINISTRATOR _____ DATE _____

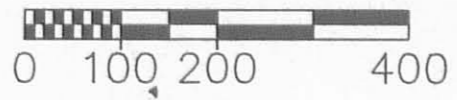
Project: LOG-347-0.00
Date of Letting _____ 19__ Contract No. _____

CENTERLINE PLAT
PERRY TOWNSHIP

FHWA REGION	STATE	PROJECT	
5	OHIO		

LOGAN COUNTY
LOG-347-0.00

1
11



PROPOSED C.R.-271 CURVE DATA
P.I. STA. 9+22.14
 $\Delta=20^{\circ}-00'-00''$ LT.
D=6'-00'-00"
R=954.93'
Lc=83.33'
Ls=250.00'
Ts=293.79'
 $\phi=7^{\circ}-30'-00''$

Xc=249.57'
Yc=10.90'
L.T.=166.82'
S.T.=83.47'
p=2.73'
k=124.93'

PROPOSED S.R.-347 CURVE DATA
P.I. STA. 131+52.90
 $\Delta=74^{\circ}-52'-05''$ RT.
D=2'-00'-00"
R=2864.79'
Lc=3593.40'
Ls=150.00'
Ts=2268.24'
 $\phi=1^{\circ}-30'-00''$

Xc=149.99'
Yc=1.31'
L.T.=100.00'
S.T.=50.00'
p=0.33'
k=75.00'

PROPOSED S.R.-347 CURVE DATA
P.I. STA. 166+40.67
 $\Delta=35^{\circ}-01'-43''$ LT.
D=5'-00'-00"
R=1145.92'
Lc=450.57'
Ls=250.00'
Ts=487.29'
 $\phi=6^{\circ}-15'-00''$

Xc=249.70'
Yc=9.08'
L.T.=166.77'
S.T.=83.43'
p=2.27'
k=124.95'

PROPOSED TRC ENTRANCE CURVE DATA
P.I. STA. 14+13.88
 $\Delta=19^{\circ}-05'-36''$ RT.
D=6'-00'-00"
R=954.93'
T=160.60'
L=318.22'
E=13.41'

PROPOSED C.R.-271 CURVE DATA
P.I. STA. 2+68.64
 $\Delta=40^{\circ}-36'-10''$ RT.
D=22'-55'-06"
R=250.00'
Lc=27.16'
Ls=150.00'
Ts=168.64'
 $\phi=17^{\circ}-11'-19.4''$

Xc=148.66'
Yc=14.90'
L.T.=100.48'
S.T.=50.43'
p=3.74'
k=74.78'

U.S.R.-33 CURVE DATA
P.I. STA. 1386+53.38
 $\Delta=46^{\circ}-46'-00''$ RT.
D=0'-44"
R=7813.06'
T=3378.32'
L=6377.27'
E=699.10'

Mon. - Vendors sup. of the Reg. Surveyor

I hereby certify that this plat is a true delineation of a survey made by the Ohio Department of Transportation in 1988.

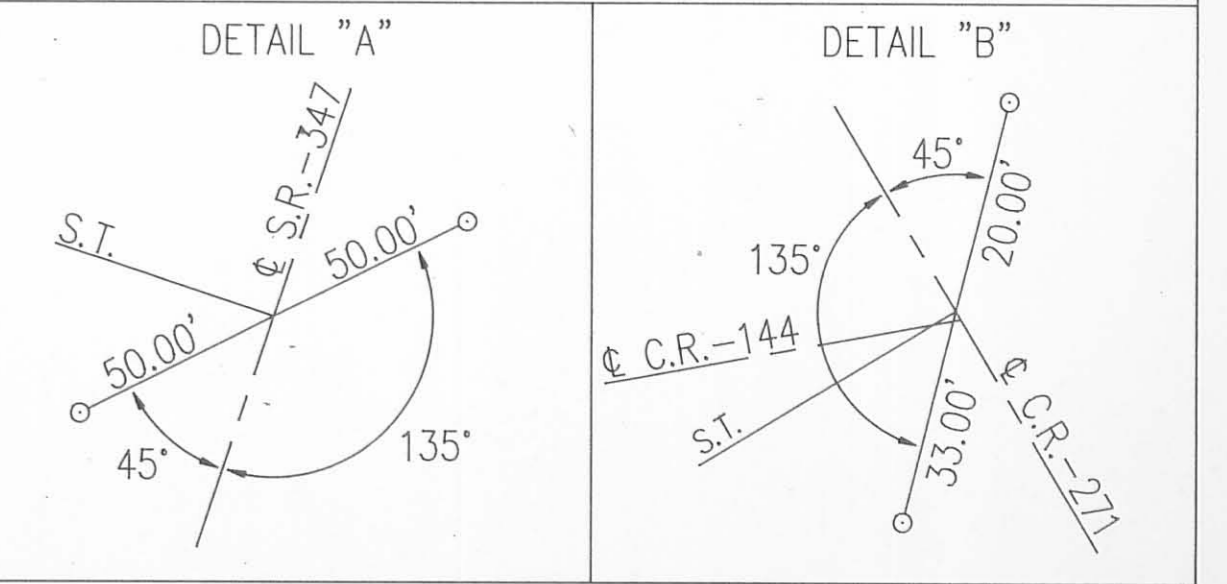
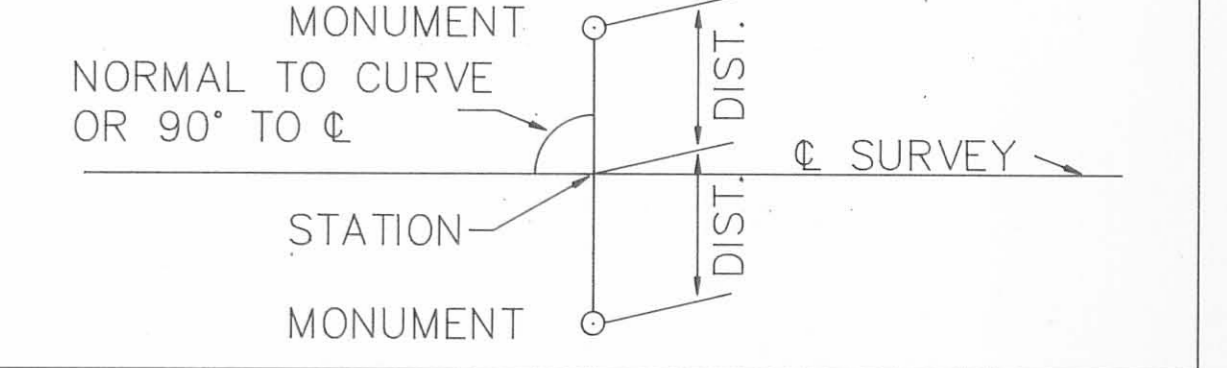
Richard R. Helmlinger - Registered Surveyor #5421

RECORDED
LOGAN COUNTY
Date: _____
Vol. : _____
Page: _____

☉ REFERENCE MONUMENTS TO BE SET BY CONTRACTOR
See Standard Construction Drawing MC-1

☉ REFERENCE MONUMENTS	
STATION	LEFT RIGHT
P.O.T. STA. 101+00	34.00' 34.00'
T.S. STA. 108+84.66	SEE DETAIL "A"
S.C. STA. 110+34.66	34.00' 34.00'
M.P. STA. 128+31.36	34.00' 34.00'
C.S. STA. 146+28.06	34.00' 34.00'
S.T. STA. 147+78.06	34.00' 34.00'
P.O.T. STA. 155+00.00	34.00' 34.00'
T.S. STA. 161+53.38	34.00' 34.00'
P.I. STA. 166+40.67	SET ON P.I.
S.T. STA. 171+03.95	34.00' 34.00'
P.O.T. STA. 180+00.00	34.00' 36.00'
P.O.T. STA. 190+00.00	34.00' 34.00'
P.O.T. STA. 200+00.00	28.00' 22.00'
P.O.T. STA. 210+00.00	22.00' 22.00'
P.C. STA. 216+30.23	22.00' 22.00'
P.T. STA. 221+28.01	22.00' 22.00'
P.O.T. STA. 230+00.00	22.00' 22.00'
P.O.T. STA. 240+00.00	22.00' 22.00'
PROPOSED C.R.-271	
P.I. STA. 2+68.64	SET ON P.I.
P.I. STA. 9+22.14	SET ON P.I.
S.T. STA. 12+11.69	SEE DETAIL "B"

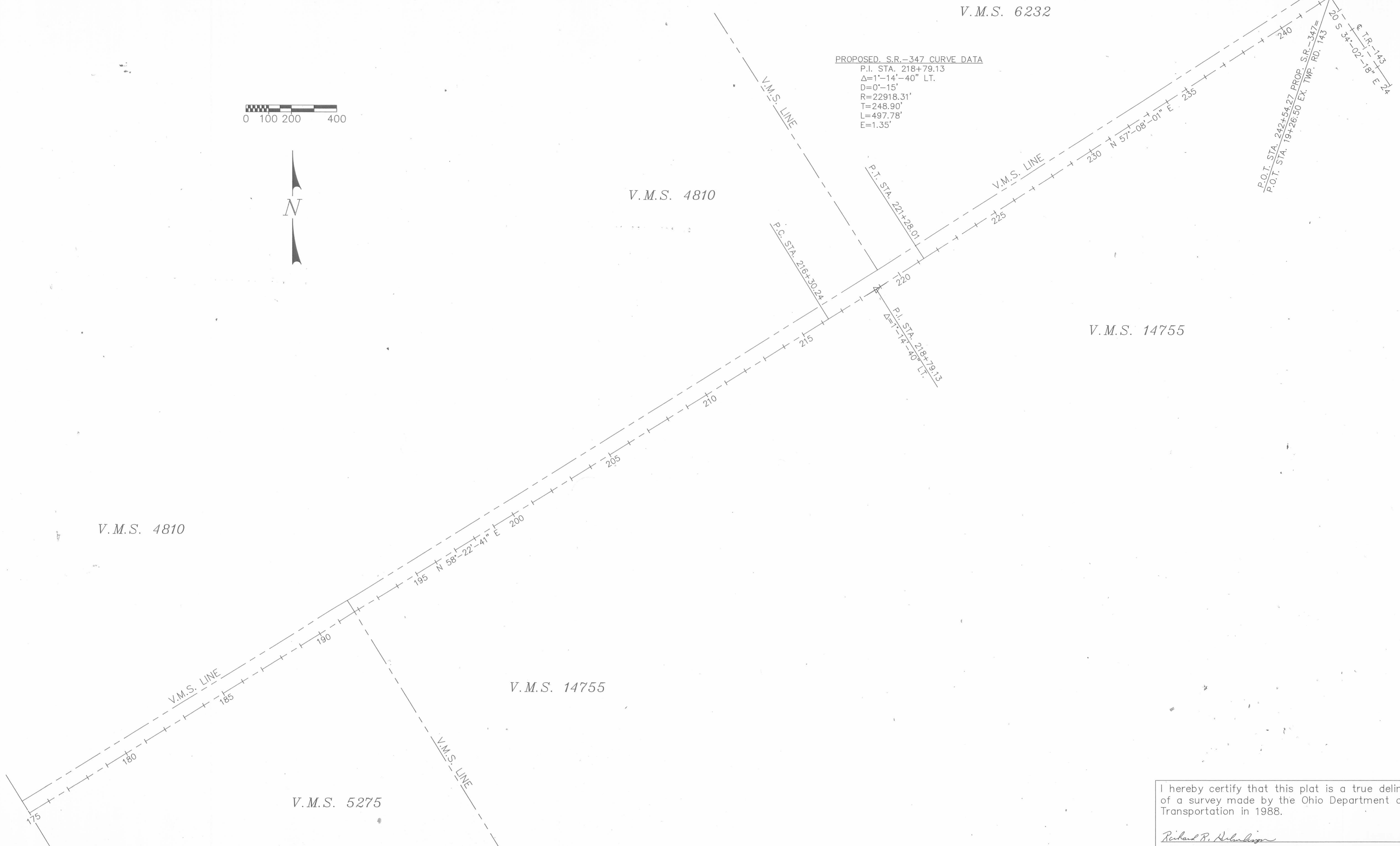
TYPICAL DETAIL FOR LOCATION OF ☉ REFERENCE MONUMENTS
☉ REFERENCE MONUMENTS TO BE SET AT STATIONS AND DISTANCES AS INDICATED IN TABLE AT LEFT.



CENTERLINE PLAT
PERRY TOWNSHIP

FHWA REGION	STATE	PROJECT
5	OHIO	

LOGAN COUNTY
LOG-347-0.00



PROPOSED S.R.-347 CURVE DATA
P.I. STA. 218+79.13
 $\Delta=1^{\circ}-14'-40''$ LT.
D=0°-15'
R=22918.31'
T=248.90'
L=497.78'
E=1.35'

V.M.S. 4810

V.M.S. 4810

V.M.S. 14755

V.M.S. 14755

V.M.S. 5275

I hereby certify that this plat is a true delineation of a survey made by the Ohio Department of Transportation in 1988.

Richard R. Helmlinger
Richard R. Helmlinger - Registered Surveyor #5421

RECORDED
LOGAN COUNTY

Date: _____
Vol. : _____
Page: _____

TOTAL NUMBER OF :
 2 OWNERSHIPS
 0 TOTAL TAKES
 0 OWNERSHIPS WITH STRUCTURES INVOLVED
 0 OWNERSHIPS WITH "P" ITEMS

JOB NO. 07767(0)
 P.F. NO. 1351

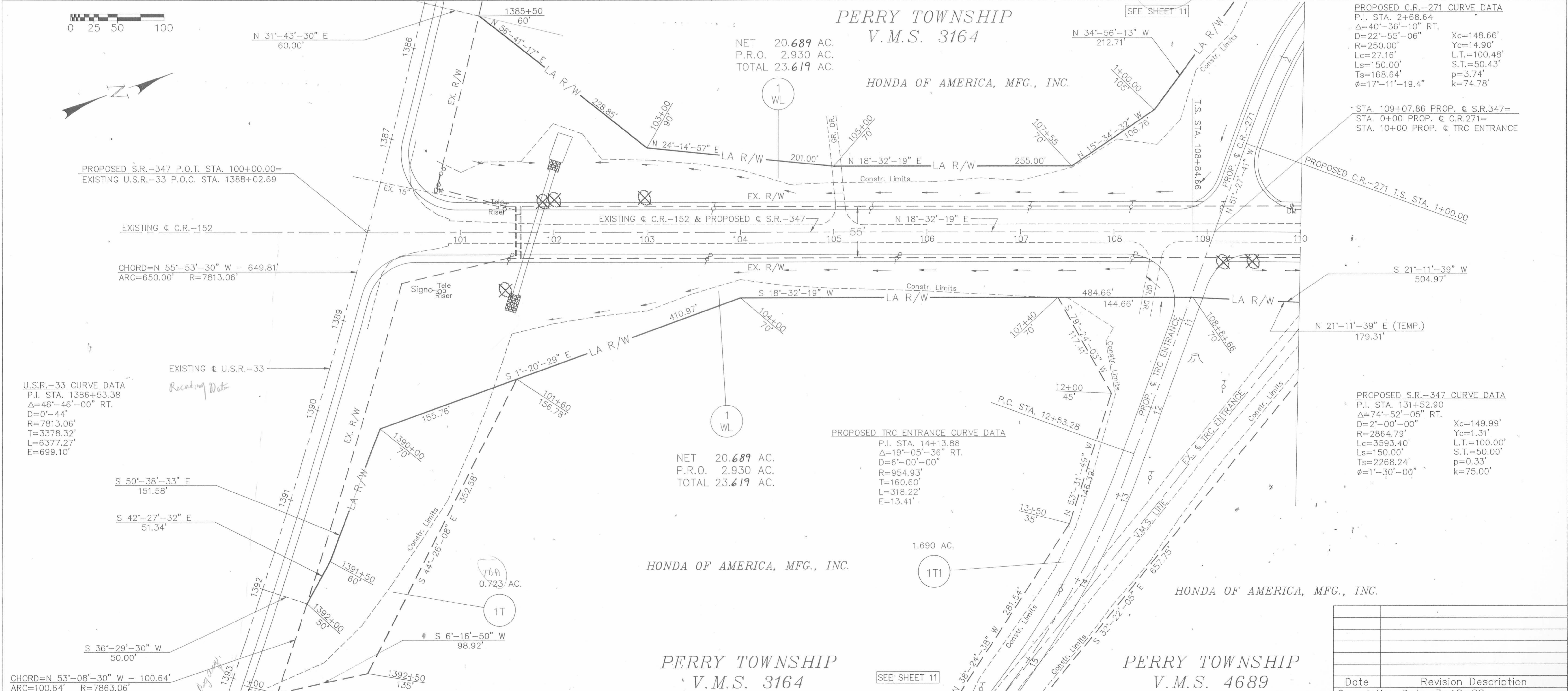
FHWA REGION	STATE	PROJECT	
5	OHIO		

LOGAN COUNTY
 LOG-347-0.00

3
11

SUMMARY OF ADDITIONAL RIGHT-OF-WAY

PARCEL	OWNER	SHEET NO.	OWNER'S RECORD		RECORD AREA	TOTAL P.R.O.	GROSS TAKE	P.R.O. IN TAKE	NET TAKE	STRUCTURE	NET RESIDUE		TYPE FUND	REMARKS & PERSONALTY	AS ACQUIRED		
			BOOK	PAGE							LEFT	RIGHT			DATE	BOOK	PAGE
1WL	HONDA OF AMERICA, MFG., INC.	3,4,5,6,7,11	56	241	4273.520		23.619	2.930	20.689				STATE				
1-1WL	HONDA OF AMERICA, MFG., INC.	7,8,9,10	56	255			18.117	0.000	18.117								
1	HONDA OF AMERICA, MFG., INC.	11	56	267			2.248	0.425	1.823								
1-1	HONDA OF AMERICA, MFG., INC.	4					0.694	0.298	0.396								
1X	HONDA OF AMERICA, MFG., INC.	6					0.172	0.000	0.172								
1T	HONDA OF AMERICA, MFG., INC.	3					0.723	0.000	0.723								
1T1	HONDA OF AMERICA, MFG., INC.	3,11					1.690	0.000	1.690								
1T2	HONDA OF AMERICA, MFG., INC.	7					0.103	0.000	0.103								
1T3	HONDA OF AMERICA, MFG., INC.	8					0.155	0.000	0.155								
1T4	HONDA OF AMERICA, MFG., INC.	11					0.058	0.000	0.058								
2WL	JOHN A. RAILE & LINDA L. RAILE (H&W)	7	33	163	113.72±	0.92±	2.219	0.000	2.219		107.287	3.294					
2E	JOHN A. RAILE & LINDA L. RAILE (H&W)	7					3.294	0.000	3.294				STATE	LANDLOCKED			



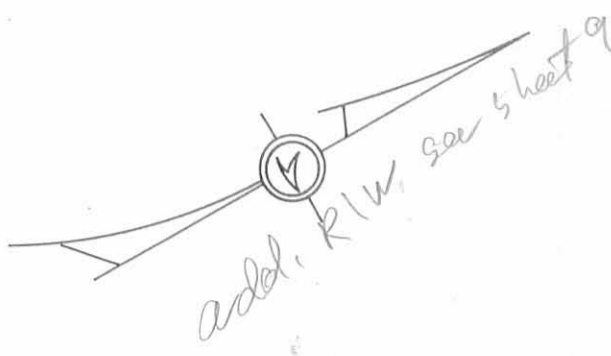
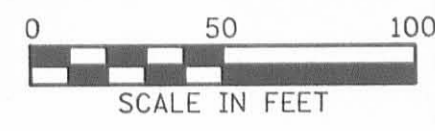
PROPOSED C.R.-271 CURVE DATA
 P.I. STA. 2+68.64
 $\Delta=40^{\circ}-36'-10''$ RT.
 $D=22^{\circ}-55'-06''$ R=250.00'
 $L_c=27.16'$ $L_s=150.00'$
 $T_s=168.64'$ $\phi=17^{\circ}-11'-19.4''$
 $X_c=148.66'$ $Y_c=14.90'$
 $L.T.=100.48'$ $S.T.=50.43'$
 $p=3.74$ $k=74.78'$

STA. 109+07.86 PROP. ϕ S.R.347=
 STA. 0+00 PROP. ϕ C.R.271=
 STA. 10+00 PROP. ϕ TRC ENTRANCE

PROPOSED S.R.-347 CURVE DATA
 P.I. STA. 131+52.90
 $\Delta=74^{\circ}-52'-05''$ RT.
 $D=2^{\circ}-00'-00''$ R=2864.79'
 $L_c=3593.40'$ $L_s=150.00'$
 $T_s=2268.24'$ $\phi=1^{\circ}-30'-00''$
 $X_c=149.99'$ $Y_c=1.31'$
 $L.T.=100.00'$ $S.T.=50.00'$
 $p=0.33'$ $k=75.00'$

U.S.R.-33 CURVE DATA
 P.I. STA. 1386+53.38
 $\Delta=46^{\circ}-46'-00''$ RT.
 $D=0^{\circ}-44'$ R=7813.06'
 $T=3378.32'$ $L=6377.27'$
 $E=699.10'$

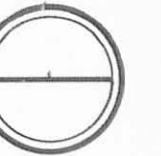
CHORD=N 53'-08'-30" W - 100.64'
 ARC=100.64' R=7863.06'



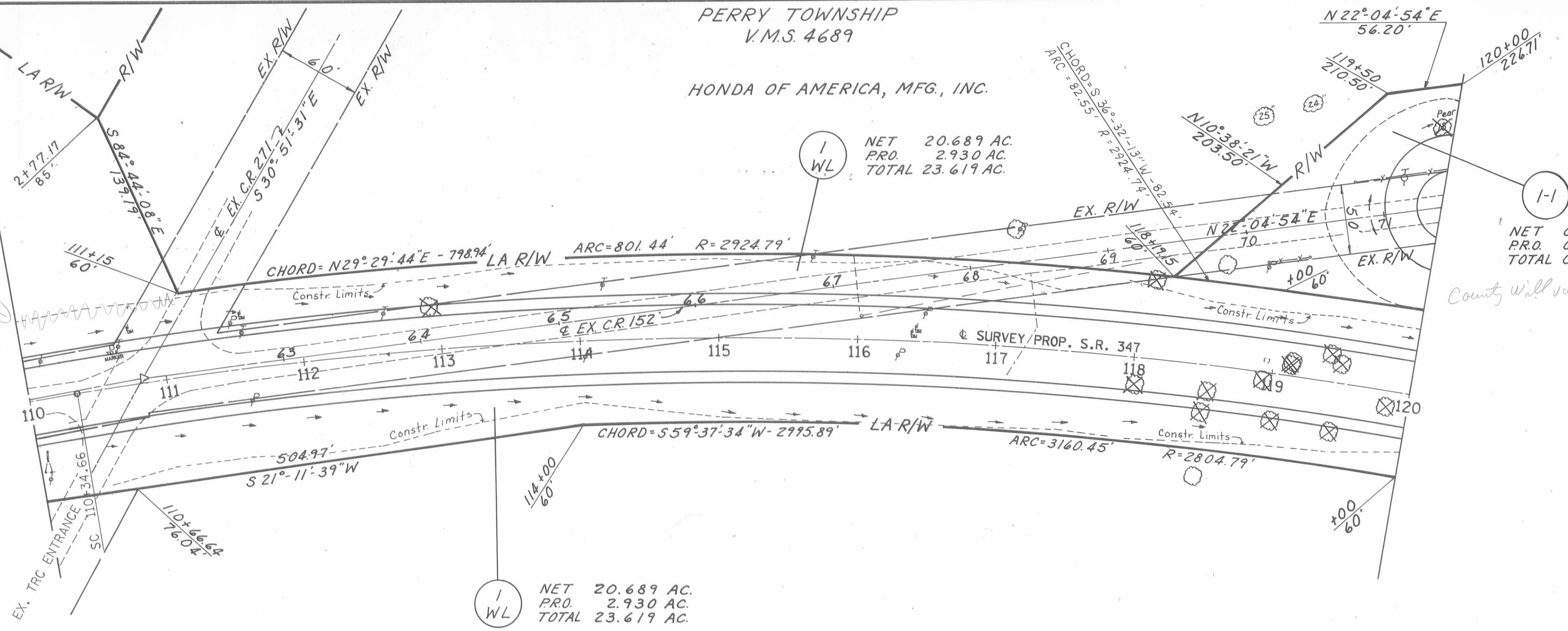
PERRY TOWNSHIP
V.M.S. 4689
HONDA OF AMERICA, MFG., INC.

FHWA REGION	STATE	PROJECT
5	OHIO	

LOGAN COUNTY
LOG-347-0.00



4
11



NET 20.689 AC.
PR.O. 2.930 AC.
TOTAL 23.619 AC.

NET 0.396 AC.
PR.O. 0.298 AC.
TOTAL 0.694 AC.

NET 20.689 AC.
PR.O. 2.930 AC.
TOTAL 23.619 AC.

CURVE 1 DATA

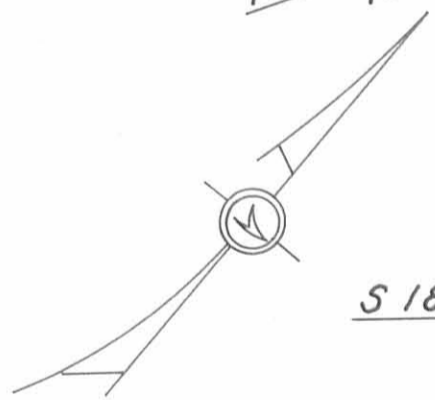
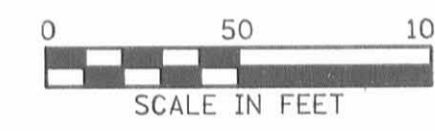
PI = STA. 131+52.90	XC = 149.99'
Δ = 74° 52' 05"	YC = 1.31'
TA = 2268.24'	P = 0.33'
To = 2268.24'	K = 75.00'
Ls = 150.00'	Δc = 71° 52' 05"
L.T. = 100.00'	Dc = 2° 00' 00"
S.T. = 50.00'	Lc = 3593.40'
Θ = 1° 30' 00"	Rc = 2864.79'

HONDA OF AMERICA, MFG., INC.

PERRY TOWNSHIP
V.M.S. 4689

PERRY TOWNSHIP
V.M.S. 4689

HONDA OF AMERICA, MFG., INC.



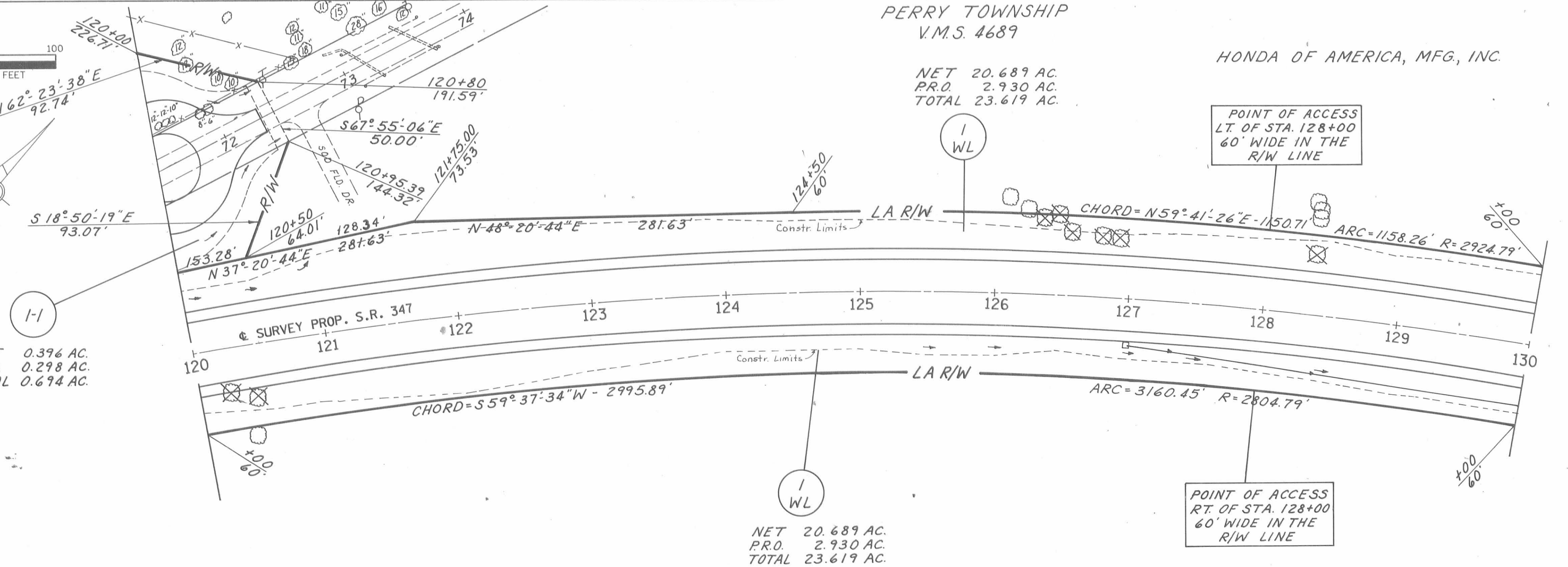
NET 0.396 AC.
PR.O. 0.298 AC.
TOTAL 0.694 AC.

NET 20.689 AC.
PR.O. 2.930 AC.
TOTAL 23.619 AC.

POINT OF ACCESS
LT. OF STA. 128+00
60' WIDE IN THE
R/W LINE

CURVE 1 DATA

PI = STA. 131+52.90	XC = 149.99'
Δ = 74° 52' 05"	YC = 1.31'
TA = 2268.24'	P = 0.33'
To = 2268.24'	K = 75.00'
Ls = 150.00'	Δc = 71° 52' 05"
L.T. = 100.00'	Dc = 2° 00' 00"
S.T. = 50.00'	Lc = 3593.40'
Θ = 1° 30' 00"	Rc = 2864.79'

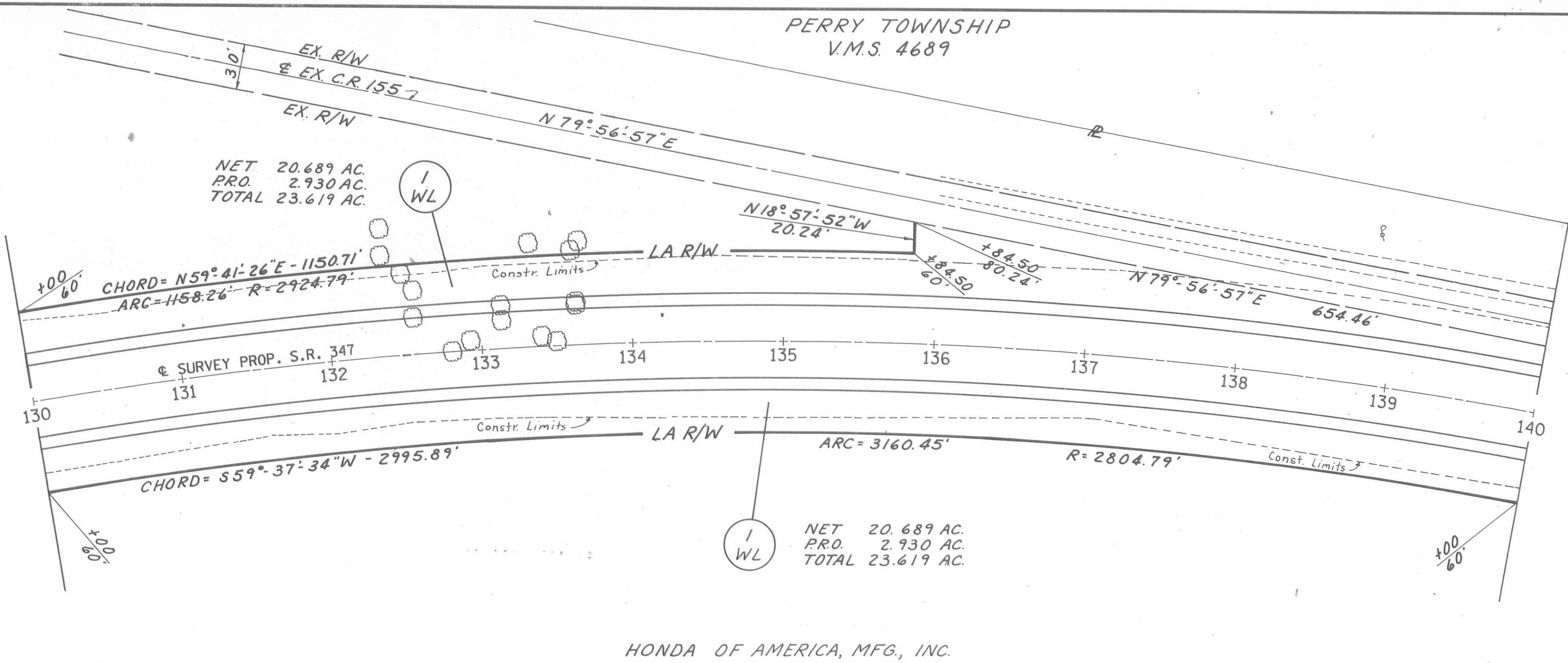
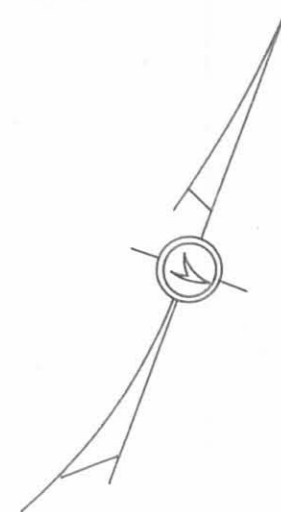
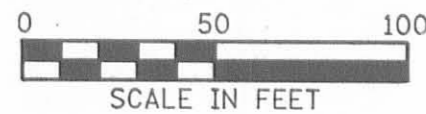


NET 20.689 AC.
PR.O. 2.930 AC.
TOTAL 23.619 AC.

HONDA OF AMERICA, MFG., INC.

PERRY TOWNSHIP
V.M.S. 4689

Date	Revision Description
Completion Date : 3-18-88	



NET 20.689 AC.
PRO. 2.930 AC.
TOTAL 23.619 AC.

NET 20.689 AC.
PRO. 2.930 AC.
TOTAL 23.619 AC.

HONDA OF AMERICA, MFG., INC.

FHWA REGION	STATE	PROJECT
5	OHIO	

LOGAN COUNTY
LOG-347-0.00



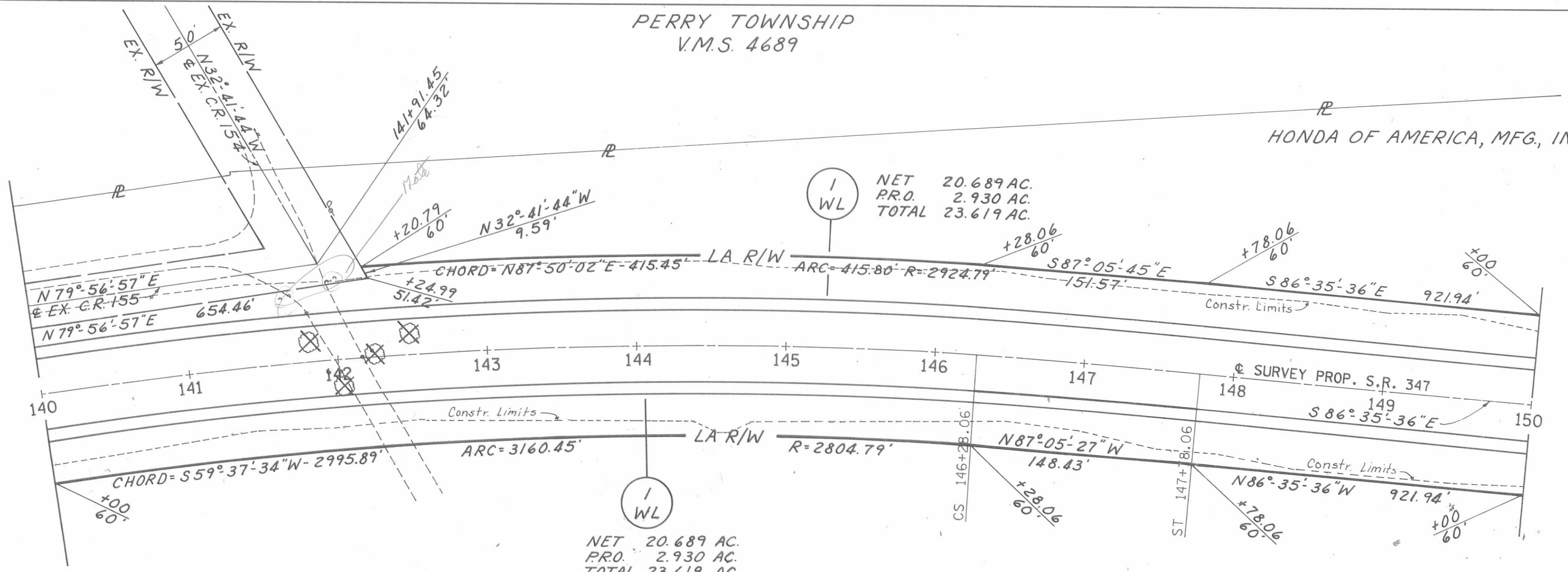
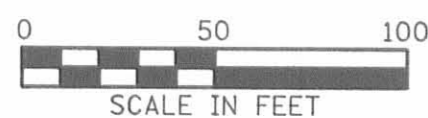
CURVE 1 DATA

PI = STA. 131+52.90	XC = 149.99'
Δ = 74° 52' 05"	YC = 1.31'
TA = 2268.24'	P = 0.33'
To = 2268.24'	K = 75.00'
Ls = 150.00'	Δc = 71° 52' 05"
L.T. = 100.00'	Dc = 2° 00' 00"
S.T. = 50.00'	Lc = 3593.40'
Θ = 1° 30' 00"	Rc = 2864.79'

PERRY TOWNSHIP
V.M.S. 4689

PERRY TOWNSHIP
V.M.S. 4689

HONDA OF AMERICA, MFG., INC.



NET 20.689 AC.
PRO. 2.930 AC.
TOTAL 23.619 AC.

NET 20.689 AC.
PRO. 2.930 AC.
TOTAL 23.619 AC.

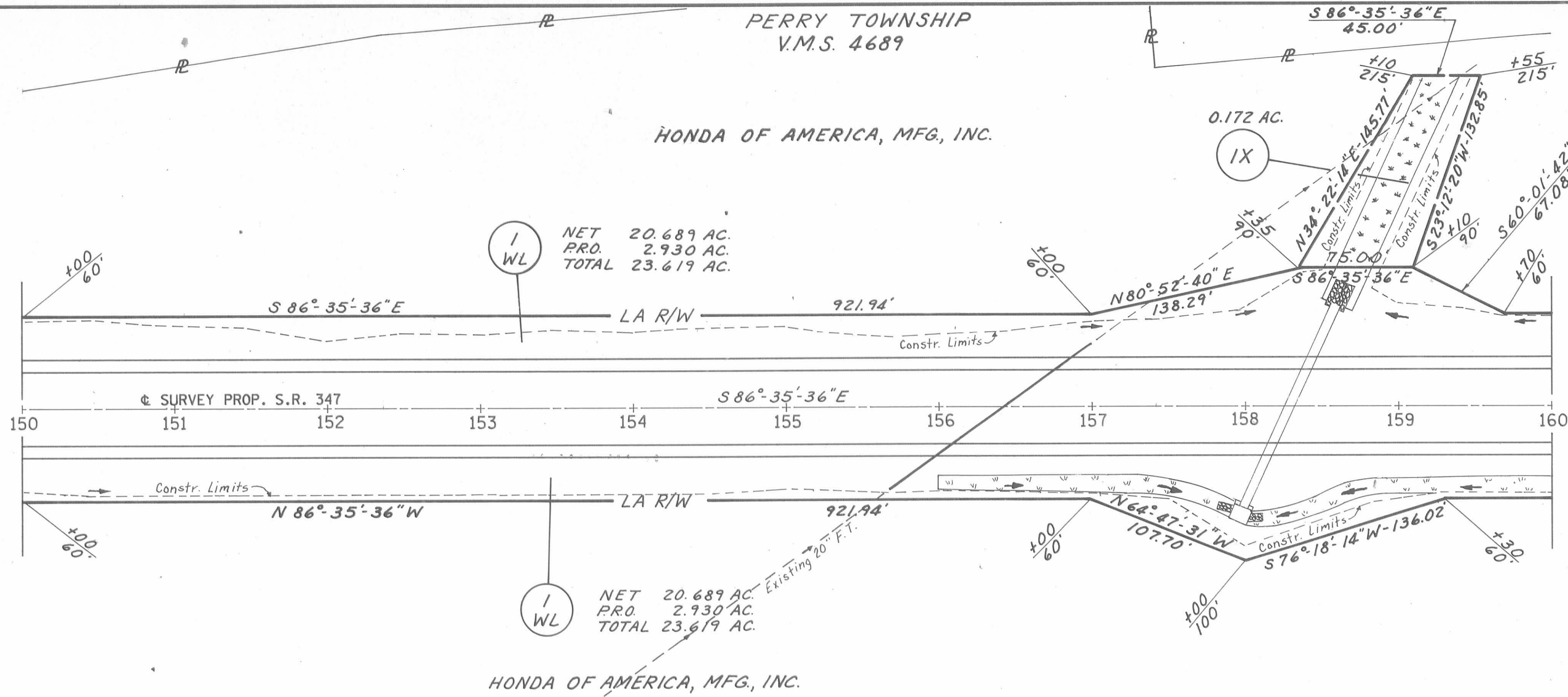
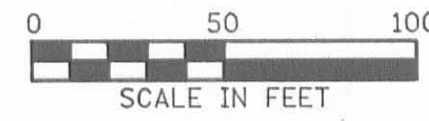
HONDA OF AMERICA, MFG., INC.

CURVE 1 DATA

PI = STA. 131+52.90	XC = 149.99'
Δ = 74° 52' 05"	YC = 1.31'
TA = 2268.24'	P = 0.33'
To = 2268.24'	K = 75.00'
Ls = 150.00'	Δc = 71° 52' 05"
L.T. = 100.00'	Dc = 2° 00' 00"
S.T. = 50.00'	Lc = 3593.40'
Θ = 1° 30' 00"	Rc = 2864.79'

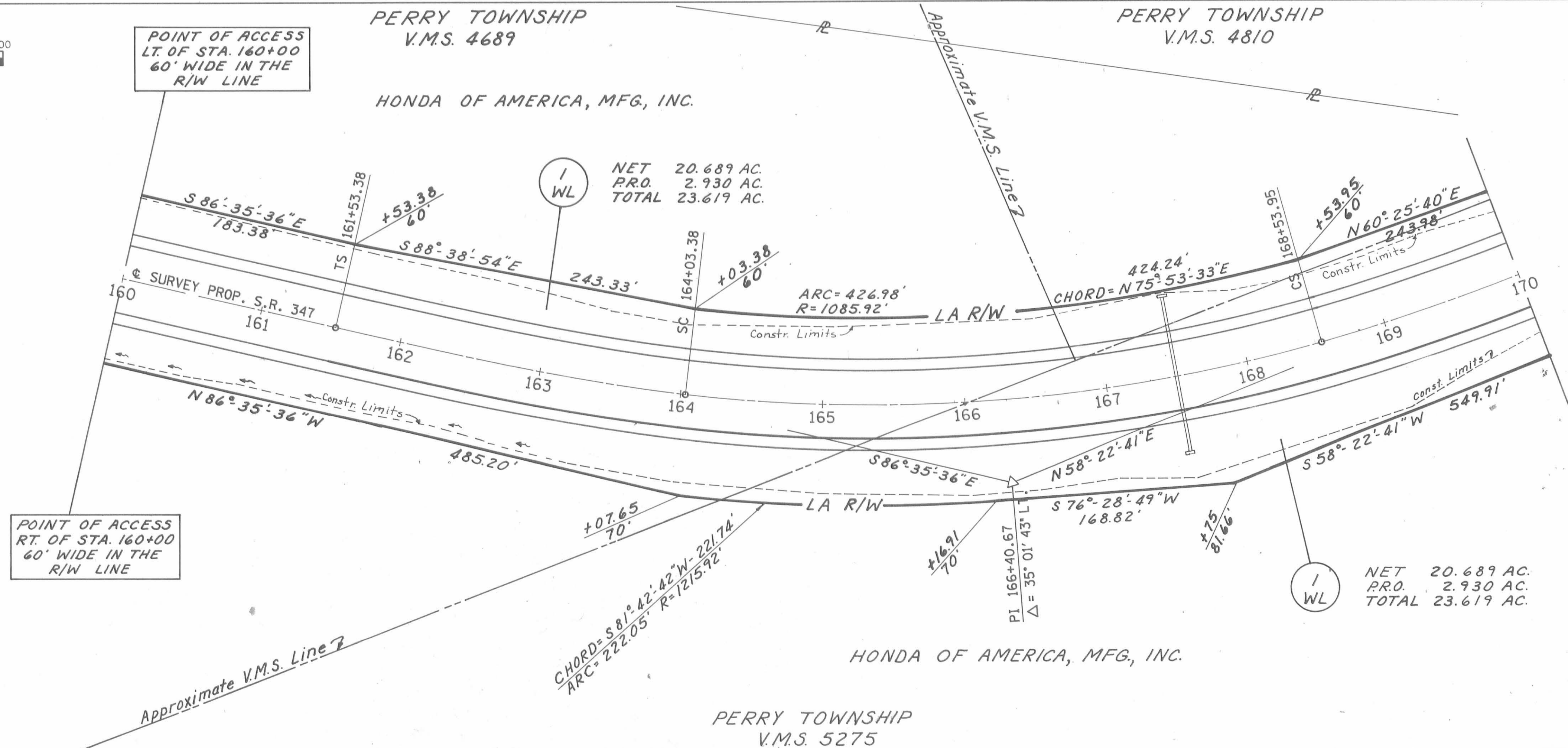
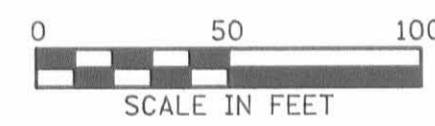
PERRY TOWNSHIP
V.M.S. 4689

Date	Revision Description
Completion Date : 3-18-88	



FHWA REGION	STATE	PROJECT
5	OHIO	

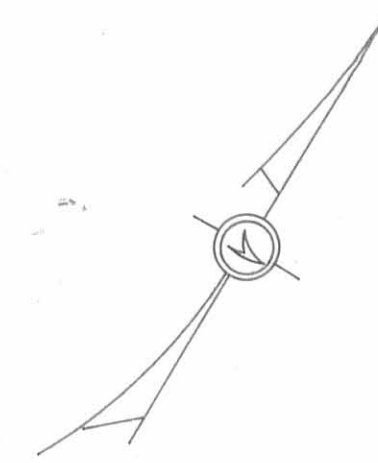
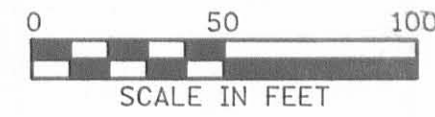
LOGAN COUNTY
LOG-347-0.00



CURVE 2 DATA

PI = 166+40.67	XC = 249.70'
Δ = 35° 01' 43"	YC = 9.08'
TA = 487.29'	P = 2.27'
To = 487.29'	K = 124.95'
Ls = 250.00'	Δc = 22° 31' 43"
S.T. = 166.77'	Dc = 5° 00' 00"
S.T. = 83.43'	Lc = 450.57'
Θ = 6° 15' 00"	Rc = 1145.92'

Date	Revision	Description
Completion Date : 3-18-88		

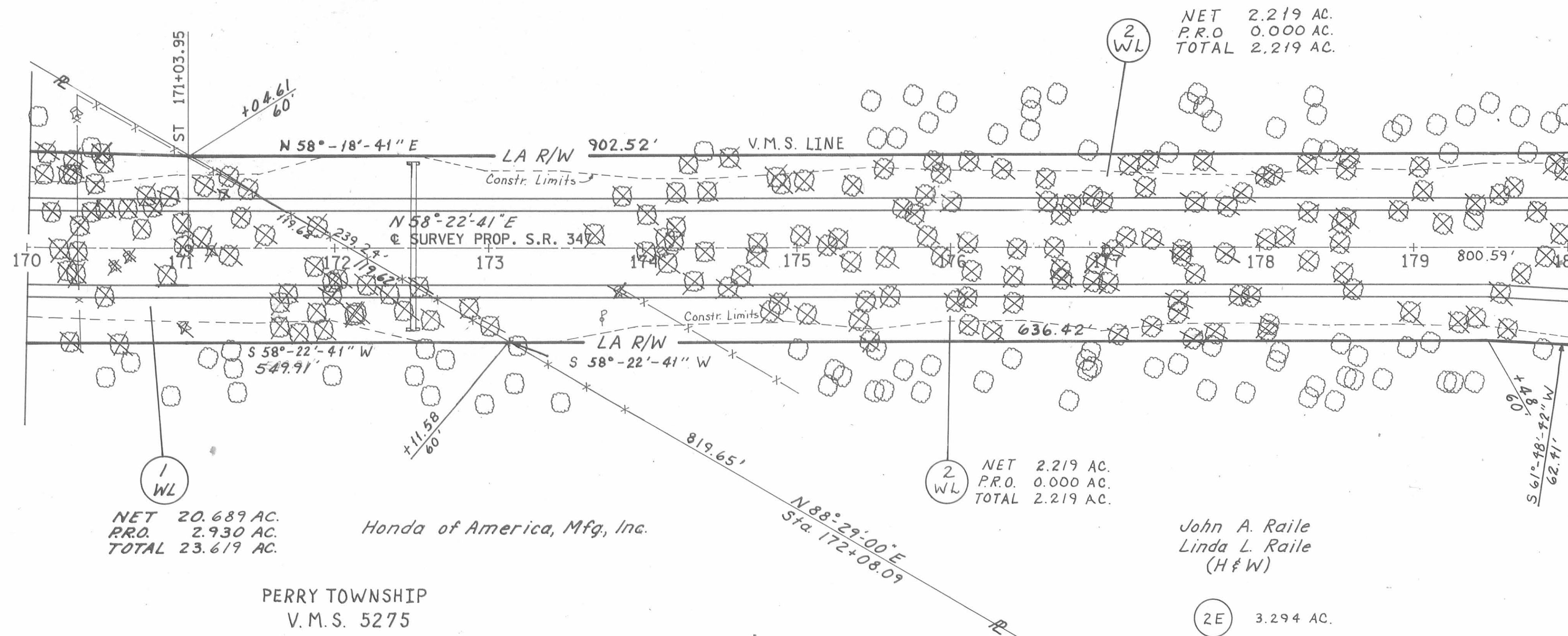


PERRY TOWNSHIP
V.M.S. 4810

John A. Raile
Linda L. Raile
(H & W)

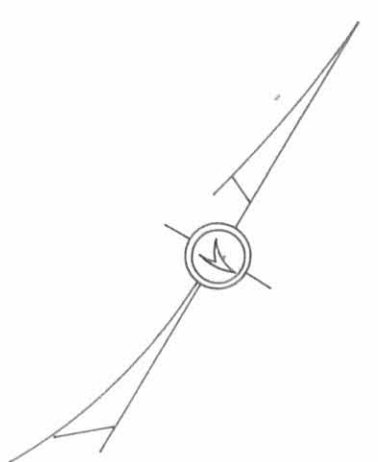
FHWA REGION	STATE	PROJECT	
5	OHIO		

LOGAN COUNTY
LOG-347-0.00



CURVE 2 DATA

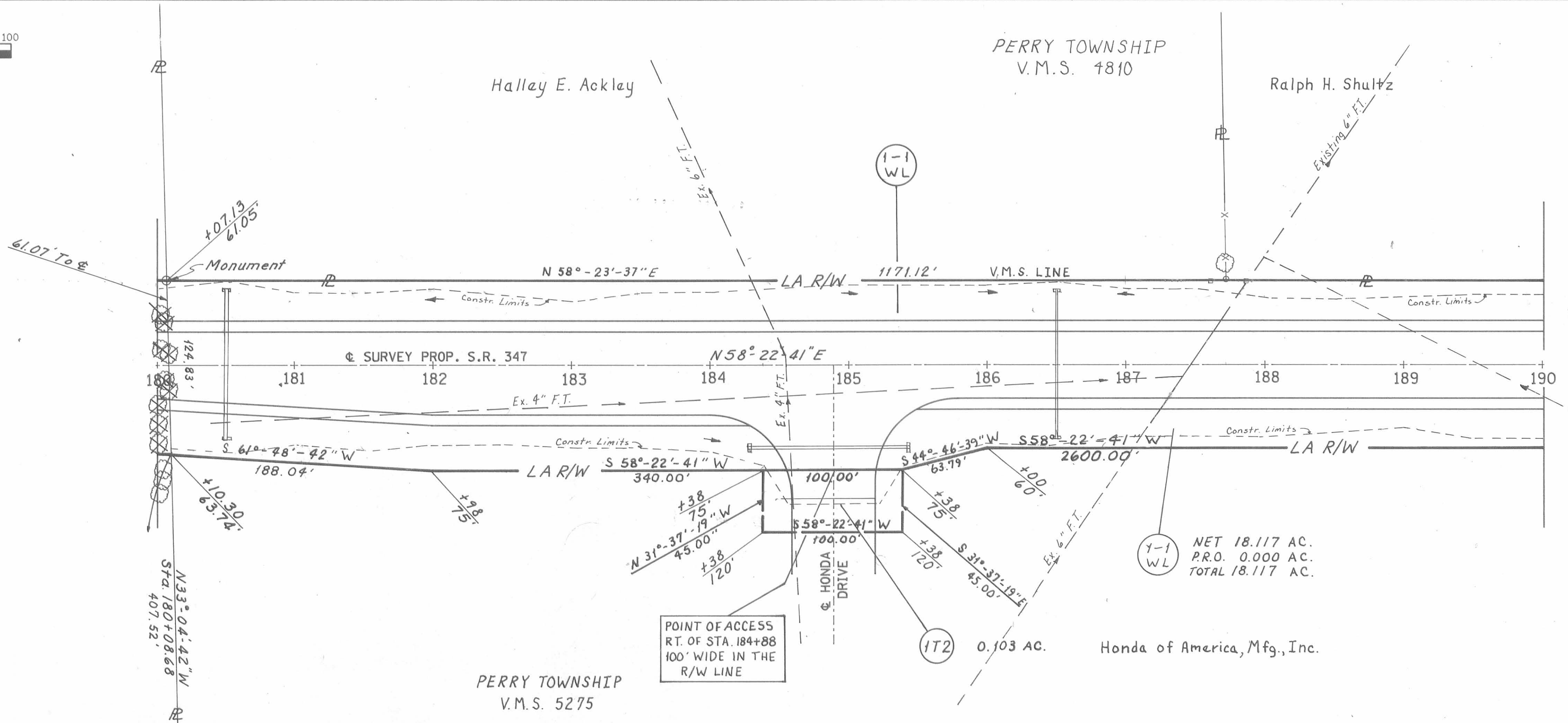
PI = 166+40.67	XC = 249.70'
Δ = 35° 01' 43"	YC = 9.08'
TA = 487.29'	P = 2.27'
To = 487.29'	K = 124.95'
Ls = 250.00'	ΔC = 22° 31' 43"
L.T. = 166.77'	Dc = 5° 00' 00"
S.T. = 83.43'	Lc = 450.57'
Θ = 6° 15' 00"	Rc = 1145.92'



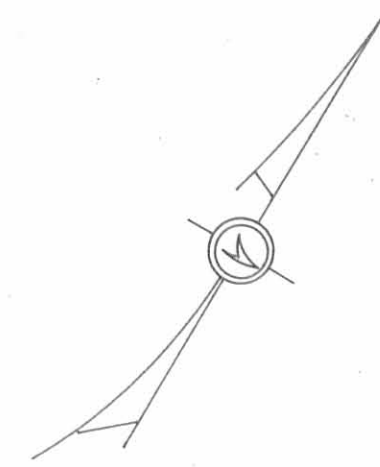
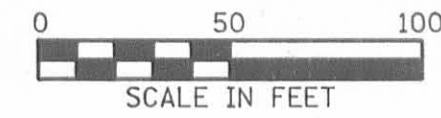
PERRY TOWNSHIP
V.M.S. 4810

Hallay E. Acklay

Ralph H. Shultz



Date	Revision Description
Completion Date : 3-18-88	



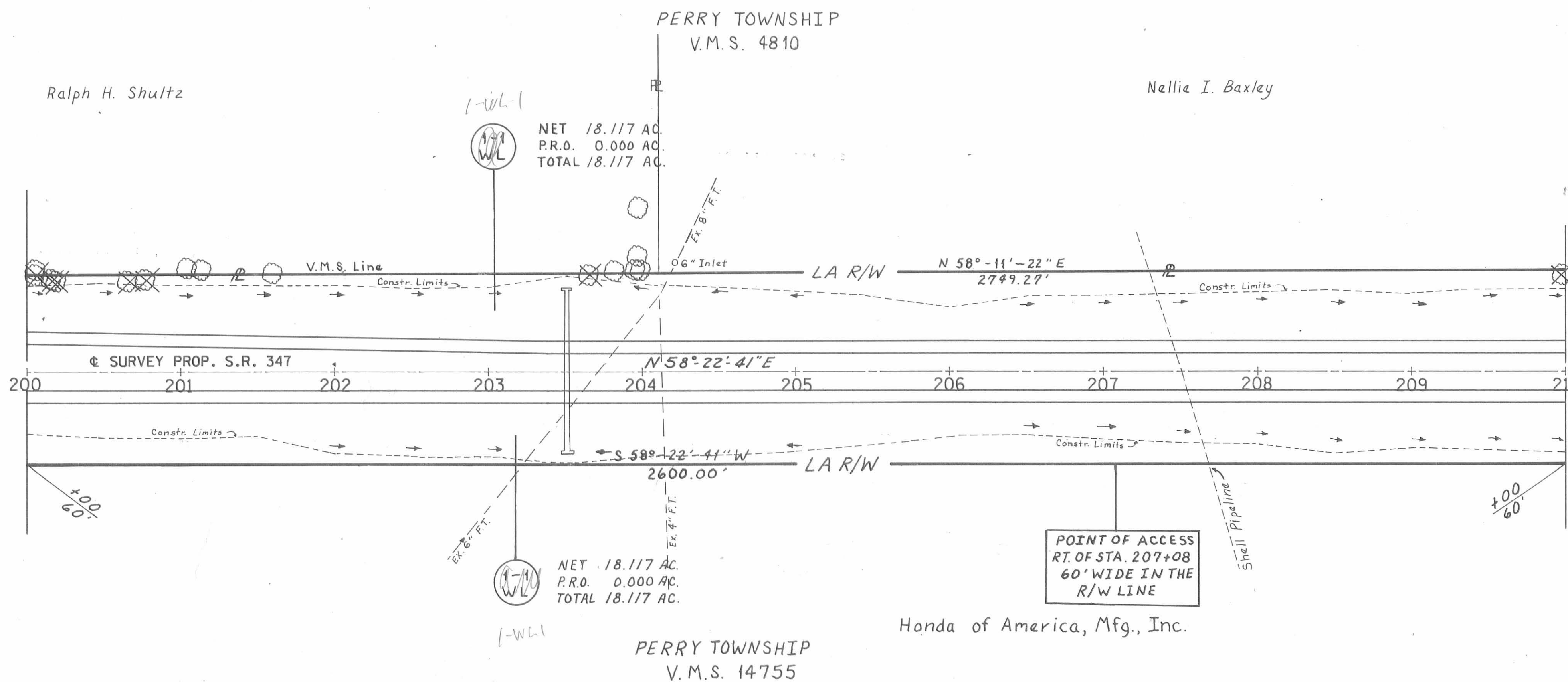
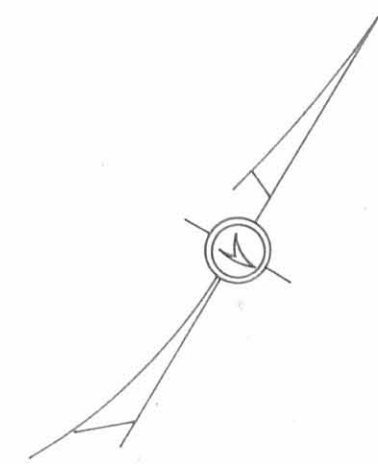
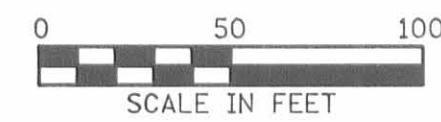
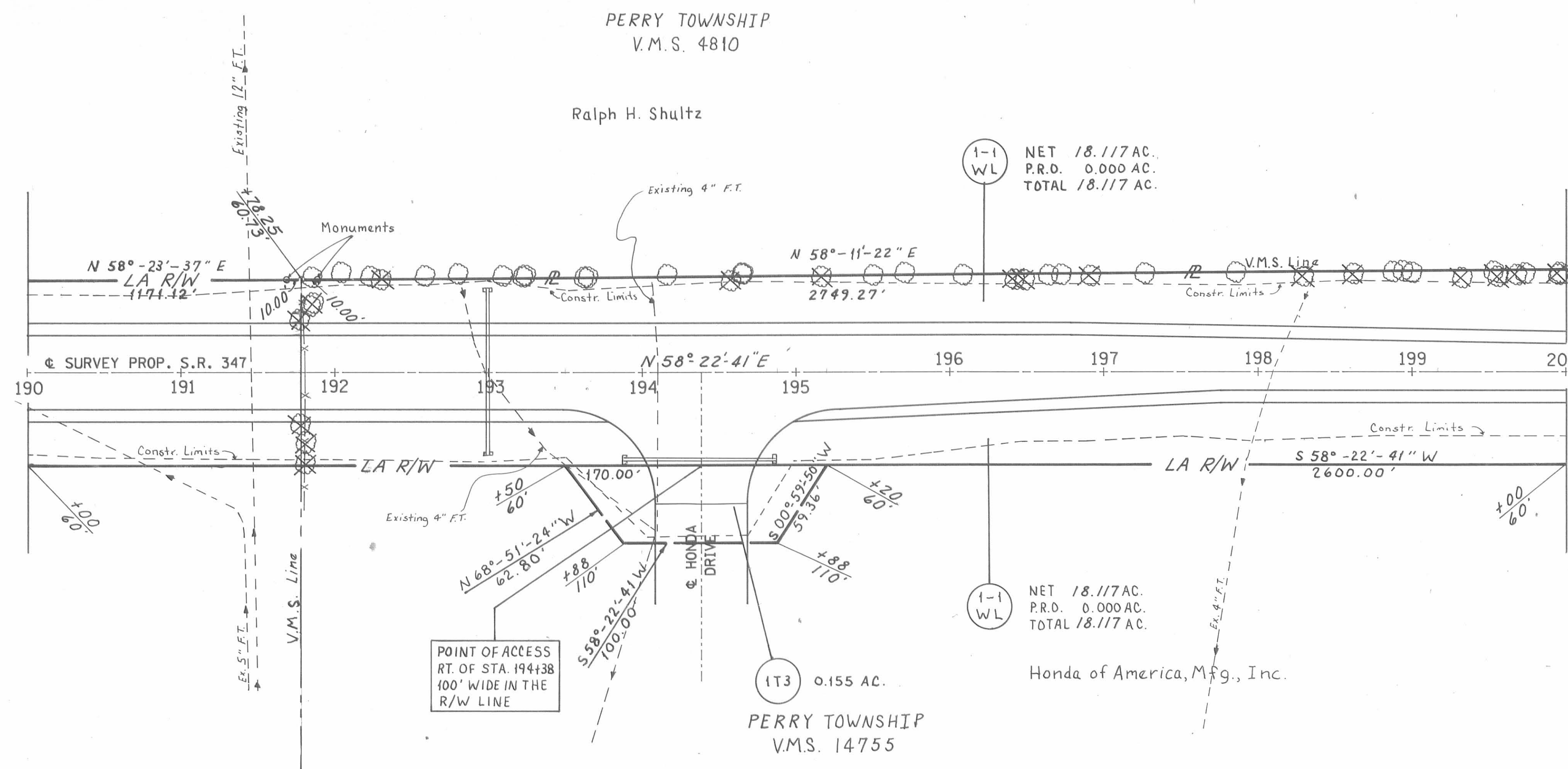
FHWA REGION	STATE	PROJECT
5	OHIO	



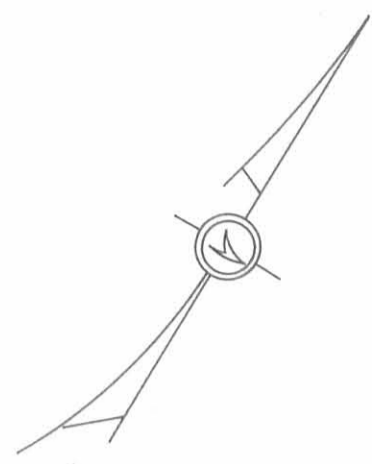
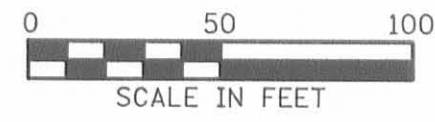
LOGAN COUNTY
LOG-347-0.00



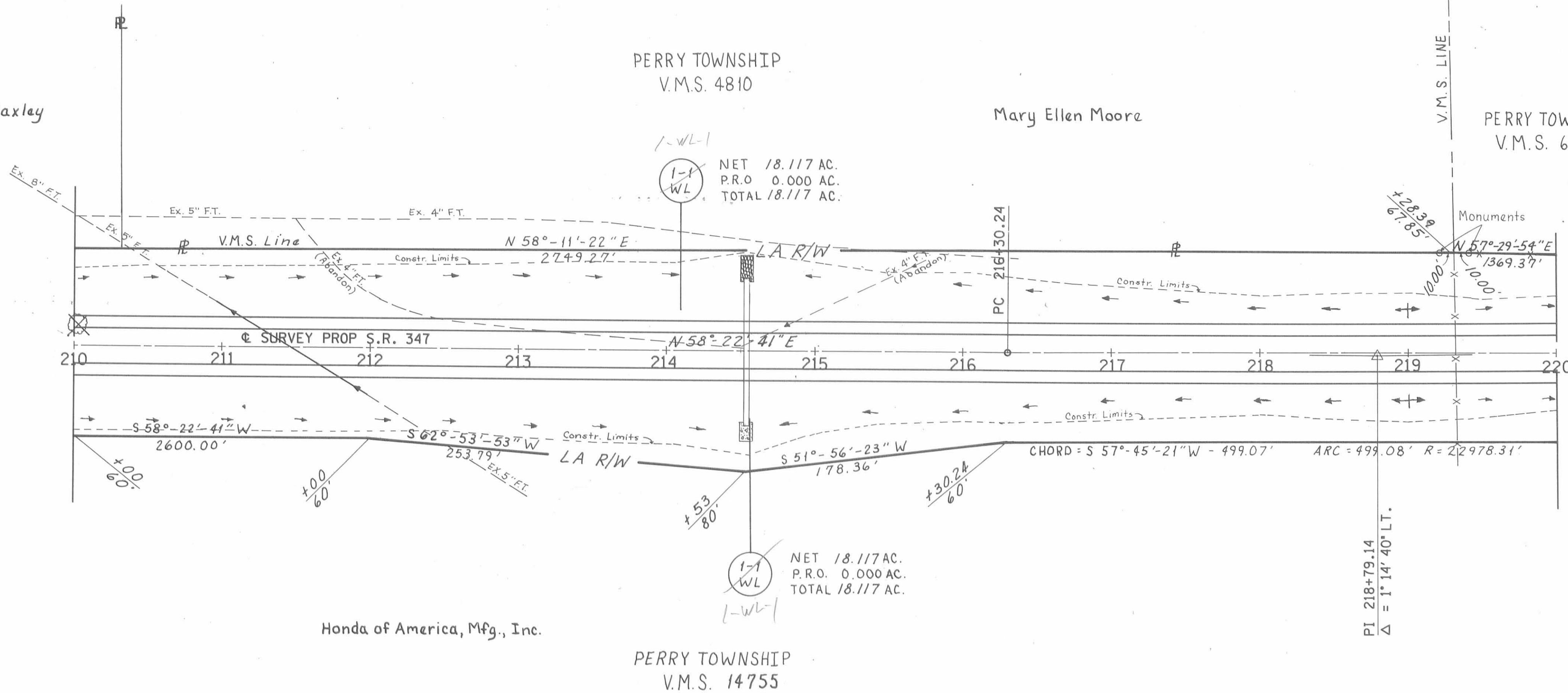
PERRY TOWNSHIP
V.M.S. 5275



Date	Revision	Description
Completion Date : 3-18-88		

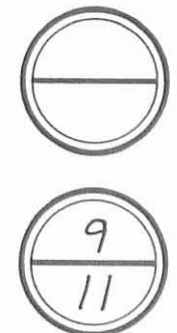


Nellie I. Baxley



FHWA REGION	STATE	PROJECT
5	OHIO	

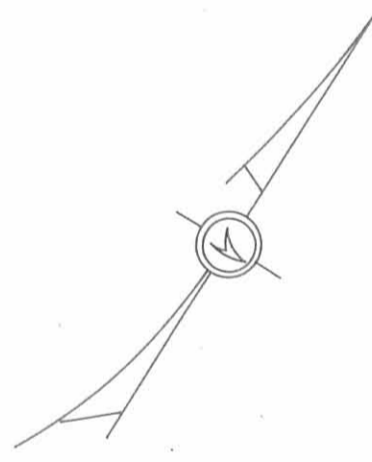
LOGAN COUNTY
LOG-347-0.00



PERRY TOWNSHIP
V.M.S. 6232

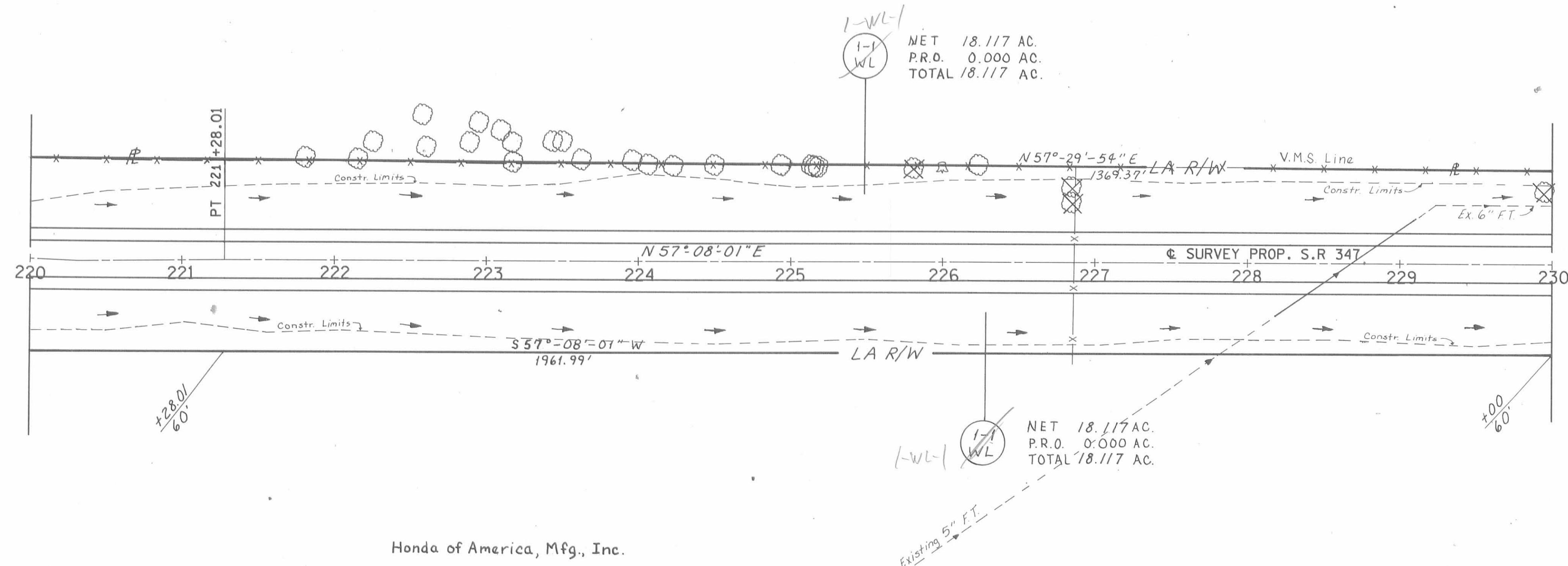
CURVE 3 DATA

PI = STA 218+79.14
Δ = 1° 14' 40" LT.
DC = 0° 15' 00"
R = 22918.31'
T = 248.90'
L = 497.78'
E = 1.35'



PERRY TOWNSHIP
V.M.S. 6232

Mary Ellen Moore



CURVE 3 DATA

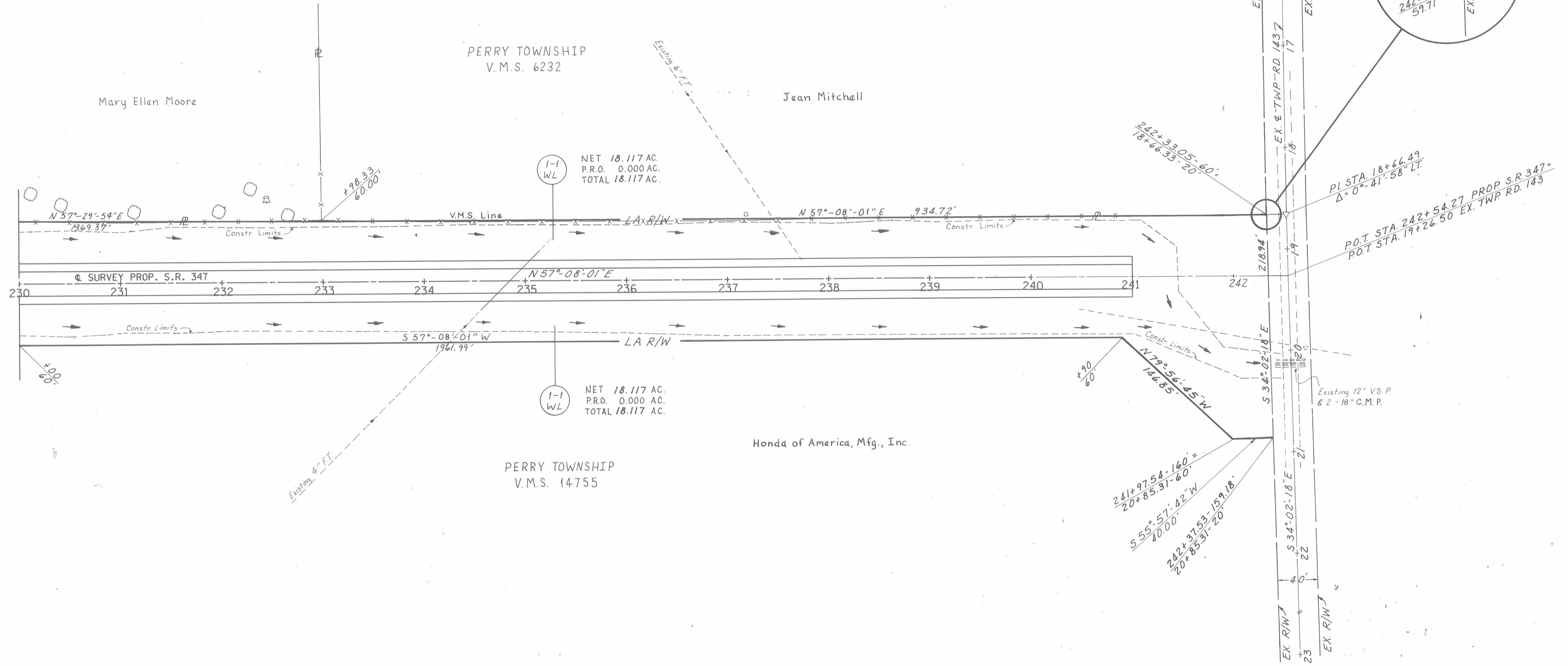
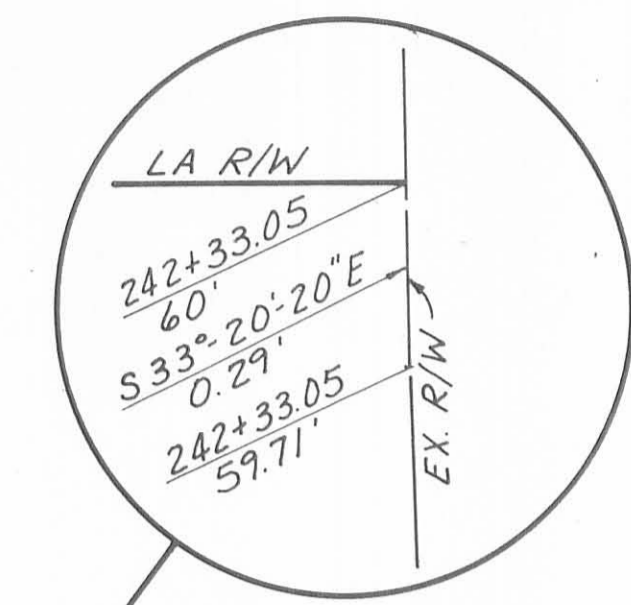
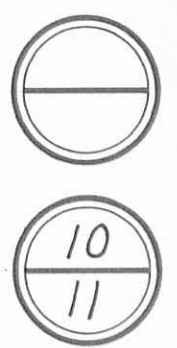
PI = STA 218+79.14
Δ = 1° 14' 40" LT.
DC = 0° 15' 00"
R = 22918.31'
T = 248.90'
L = 497.78'
E = 1.35'

Date	Revision Description
Completion Date : 3-18-88	

PERRY TOWNSHIP
V.M.S. 14755

FHWA REGION	STATE	PROJECT
5	OHIO	

LOGAN COUNTY
LOG-347-0.00



Date	Revision Description
Completion Date : 3-18-88	

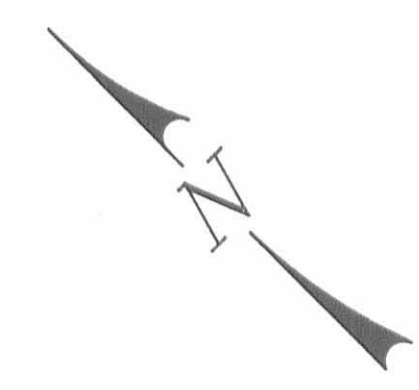
PROP. C.R.-271 & T.R.C. ENTRANCE

FHWA REGION	STATE	PROJECT
5	OHIO	

LOGAN COUNTY
LOG-347-0.00

11
11

PERRY TOWNSHIP
V.M.S. 4689



PROPOSED S.R.-347 CURVE DATA
 P.I. STA. 131+52.90
 $\Delta=74^{\circ}-52'-05''$ RT.
 $D=2'-00'-00''$
 $R=2864.79'$
 $Lc=3593.40'$
 $Ls=150.00'$
 $Ts=2268.24'$
 $\phi=1^{\circ}-30'-00''$
 $Xc=149.99'$
 $Yc=1.31'$
 $L.T.=100.00'$
 $S.T.=50.00'$
 $p=0.33'$
 $k=75.00'$

NET 1.823 AC.
 P.R.O. 0.425 AC.
 TOTAL 2.248 AC.

Chord=N 29'-29'-44" E - 798.94'
 Arc=801.44' - R=2924.79'

HONDA OF AMERICA, MFG., INC.

NET 20.689 AC.
 P.R.O. 2.930 AC.
 TOTAL 23.619 AC.

PROPOSED TRC ENTRANCE CURVE DATA
 P.I. STA. 14+13.88
 $\Delta=19^{\circ}-05'-36''$ RT.
 $D=6'-00'-00''$
 $R=954.93'$
 $T=160.60'$
 $L=318.22'$
 $E=13.41'$

LUCILLE MEDDLES - LIFE ESTATE

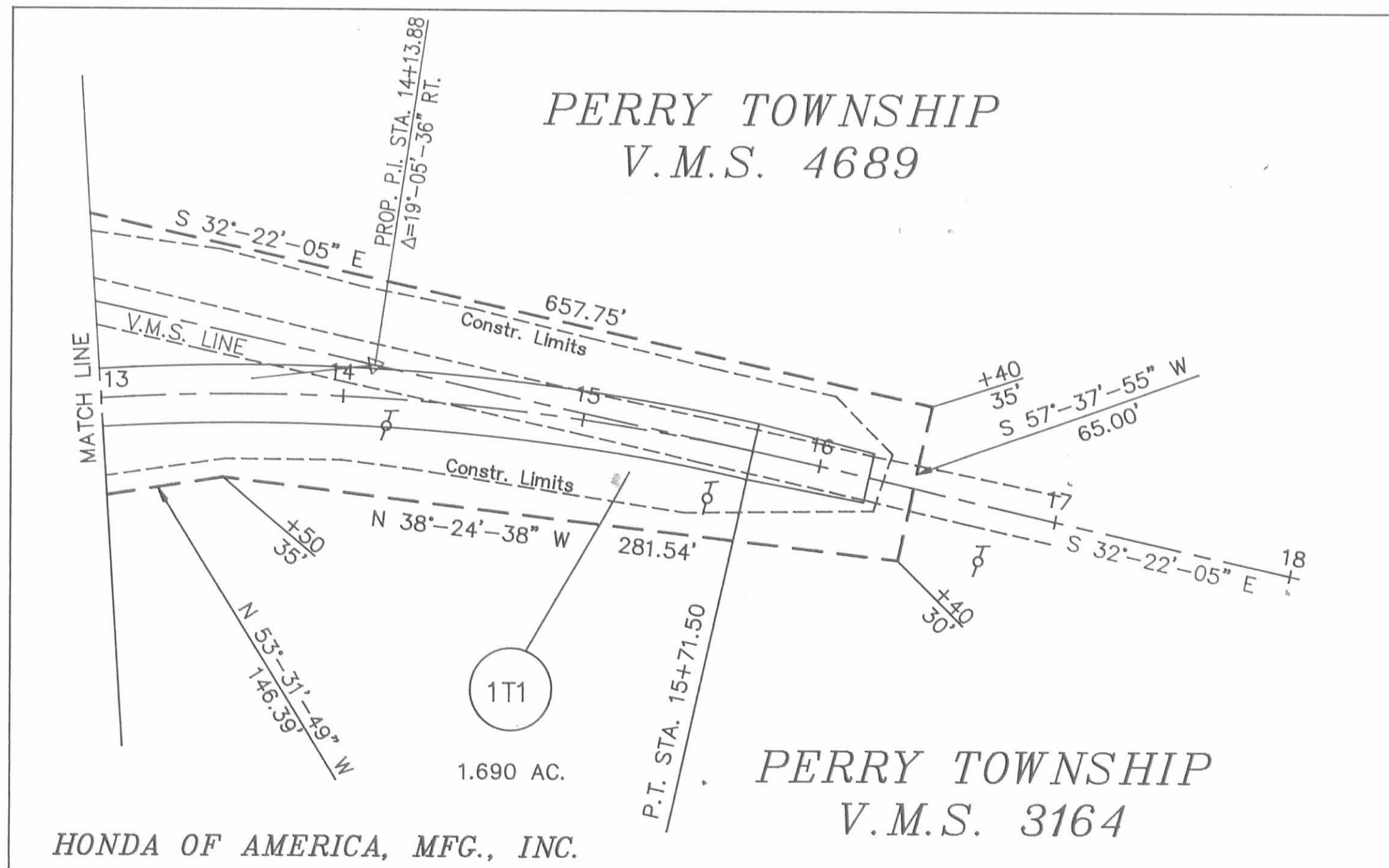
HONDA OF AMERICA, MFG., INC.

HONDA OF AMERICA, MFG., INC.

PERRY TOWNSHIP
V.M.S. 3164

PROPOSED C.R.-271 CURVE DATA
 P.I. STA. 9+22.14
 $\Delta=20^{\circ}-00'-00''$ LT.
 $D=6'-00'-00''$
 $R=954.93'$
 $Lc=83.33'$
 $Ls=250.00'$
 $Ts=293.79'$
 $\phi=7^{\circ}-30'-00''$
 $Xc=249.57'$
 $Yc=10.90'$
 $L.T.=166.82'$
 $S.T.=83.47'$
 $p=2.73'$
 $k=124.93'$

PERRY TOWNSHIP
V.M.S. 4689



PROPOSED C.R.-271 CURVE DATA
 P.I. STA. 2+68.64
 $\Delta=40^{\circ}-36'-10''$ RT.
 $D=22'-55'-06''$
 $R=250.00'$
 $Lc=27.16'$
 $Ls=150.00'$
 $Ts=168.64'$
 $\phi=17^{\circ}-11'-19.4''$
 $Xc=148.66'$
 $Yc=14.90'$
 $L.T.=100.48'$
 $S.T.=50.43'$
 $p=3.74'$
 $k=74.78'$

NET 20.592 AC.
 P.R.O. 2.930 AC.
 TOTAL 23.522 AC.

STA. 109+07.86 PROP. C. S.R.347=
 STA. 0+00 PROP. C. C.R.271=
 STA. 10+00 PROP. C. TRC ENTRANCE

Date	Revision	Description
Completion Date: 3-18-88		