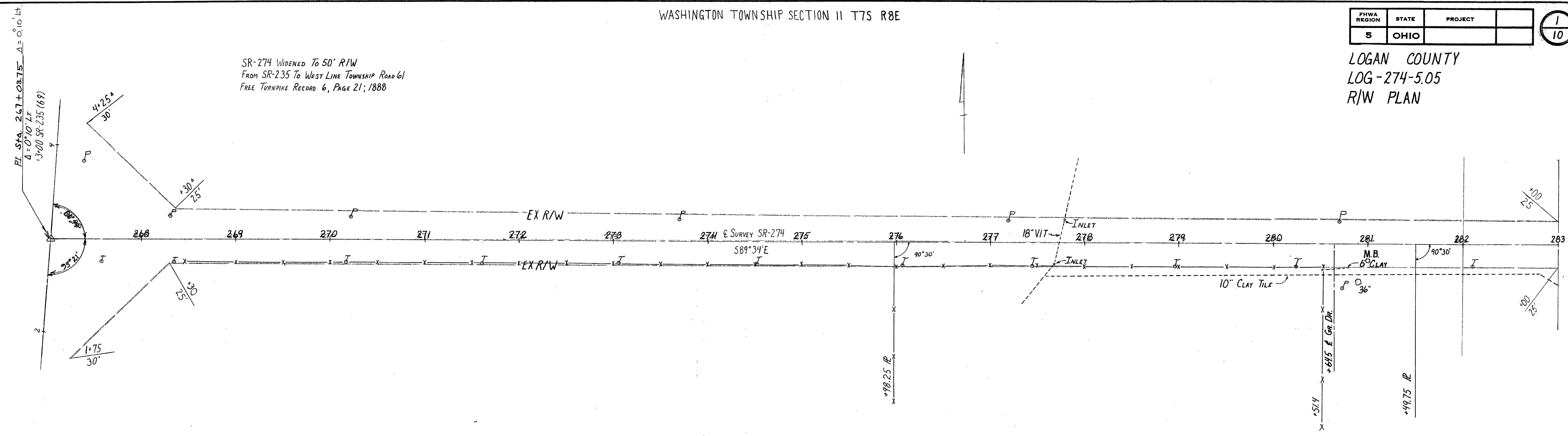


WASHINGTON TOWNSHIP SECTION 11 T7S R8E

FHWA REGION	STATE	PROJECT	
5	OHIO		

LOGAN COUNTY  
LOG-274-5.05  
R/W PLAN

SR-274 WIDENED TO 50' R/W  
FROM SR-235 TO WEST LINE TOWNSHIP ROAD 61  
FREE TURNPIKE RECORD 6, PAGE 21, 1888



FOR SR-274 BACK SEE  
LOG-274-(4.67-5.03)  
R/W SHEET 19/19 (1964)

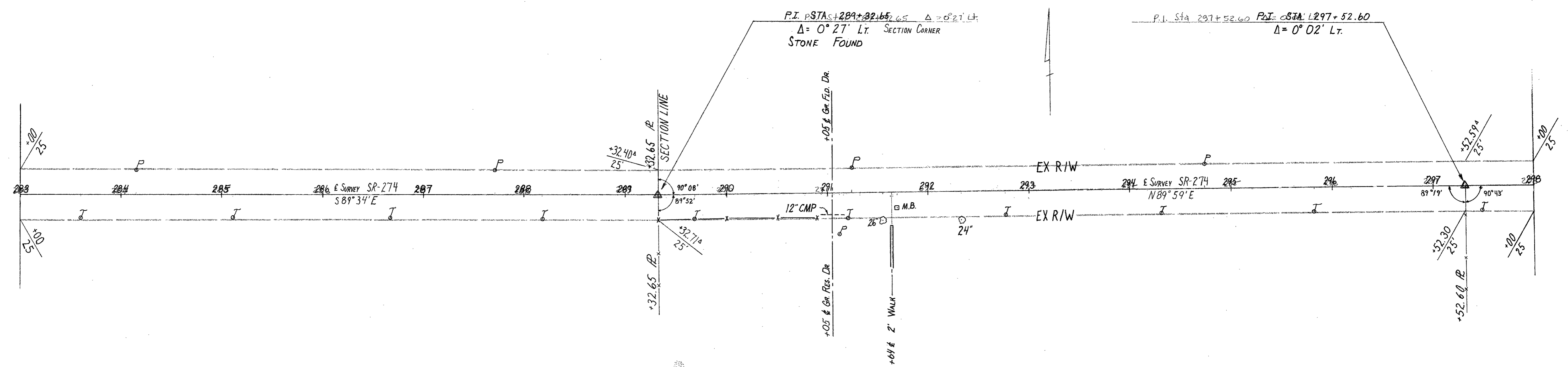
E TANGENT BACK TO  
P.I. STA. 247+50  
1954 PLANS

EXISTING R/W FROM RECORDS ON FILE  
IN LOGAN COUNTY ENGINEERS AND COMMISSIONER'S OFFICE.  
SURVEY MADE IN 1967, BY BEN CARTWRIGHT R.S.# , DDOT-7

WASHINGTON TOWNSHIP SECTION 14 T7S R8E

WASHINGTON TOWNSHIP SECTION 12 T7S R8E

WASHINGTON TOWNSHIP SECTION 11 T7S R8E



WASHINGTON TOWNSHIP SECTION 14 T7S R8E

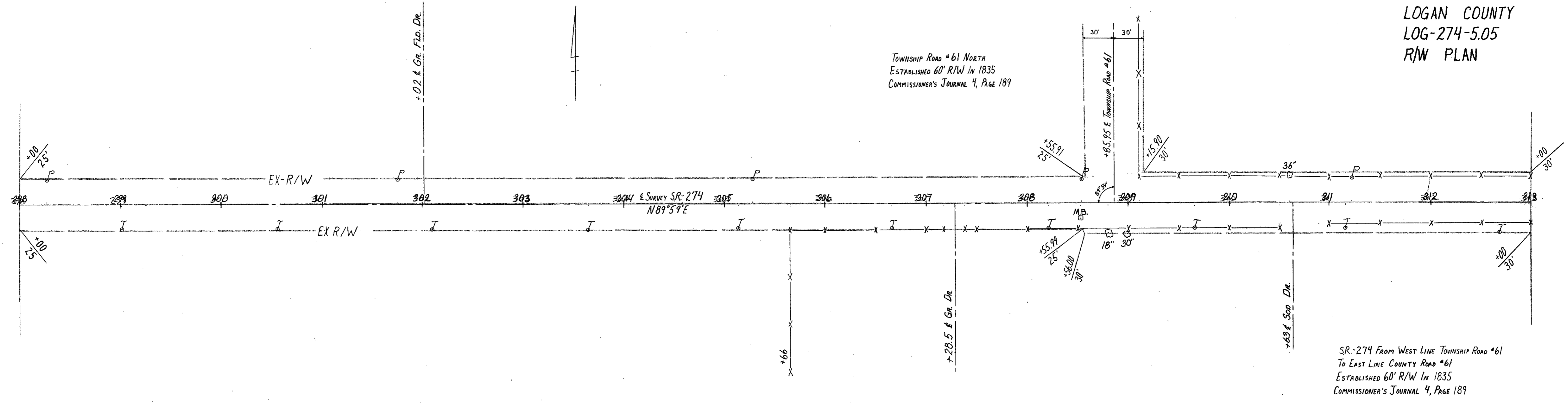
WASHINGTON TOWNSHIP SECTION 13 T7S R8E

WASHINGTON TOWNSHIP SECTION 12 T7S R8E

FHWA REGION	STATE	PROJECT
5	OHIO	

LOGAN COUNTY  
LOG-274-5.05  
R/W PLAN

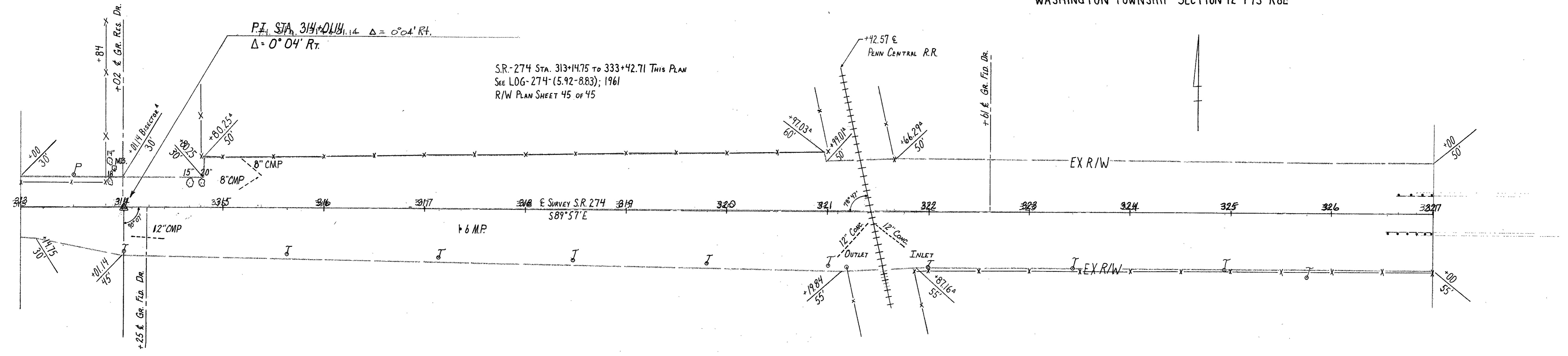
TOWNSHIP ROAD #61 NORTH  
ESTABLISHED 60' R/W IN 1835  
COMMISSIONER'S JOURNAL 4, PAGE 189



SR-274 FROM WEST LINE TOWNSHIP ROAD #61  
TO EAST LINE COUNTY ROAD #61  
ESTABLISHED 60' R/W IN 1835  
COMMISSIONER'S JOURNAL 4, PAGE 189

WASHINGTON TOWNSHIP SECTION 13 T7S R8E

WASHINGTON TOWNSHIP SECTION 12 T7S R8E

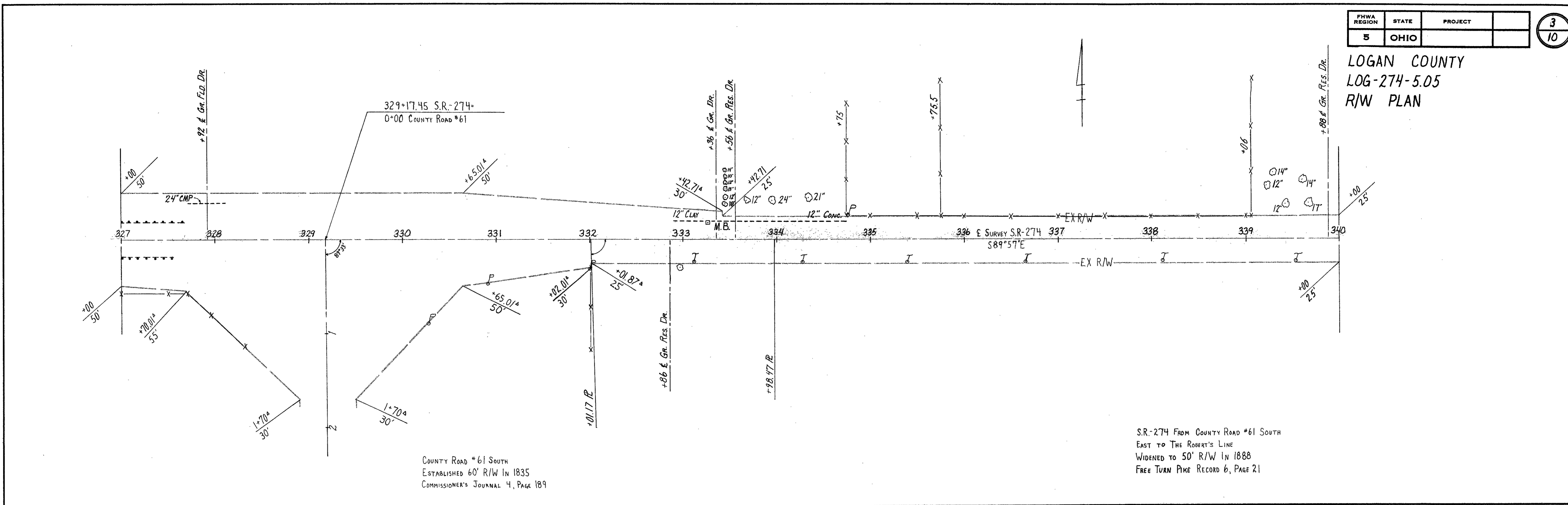


S.R.-274 STA. 313+14.75 TO 333+42.71 THIS PLAN  
SEE LOG-274-(5.92-8.83); 1961  
R/W PLAN SHEET 45 OF 45

WASHINGTON TOWNSHIP SECTION 13 T7S R8E

FHWA REGION	STATE	PROJECT
5	OHIO	

LOGAN COUNTY  
LOG-274-5.05  
R/W PLAN

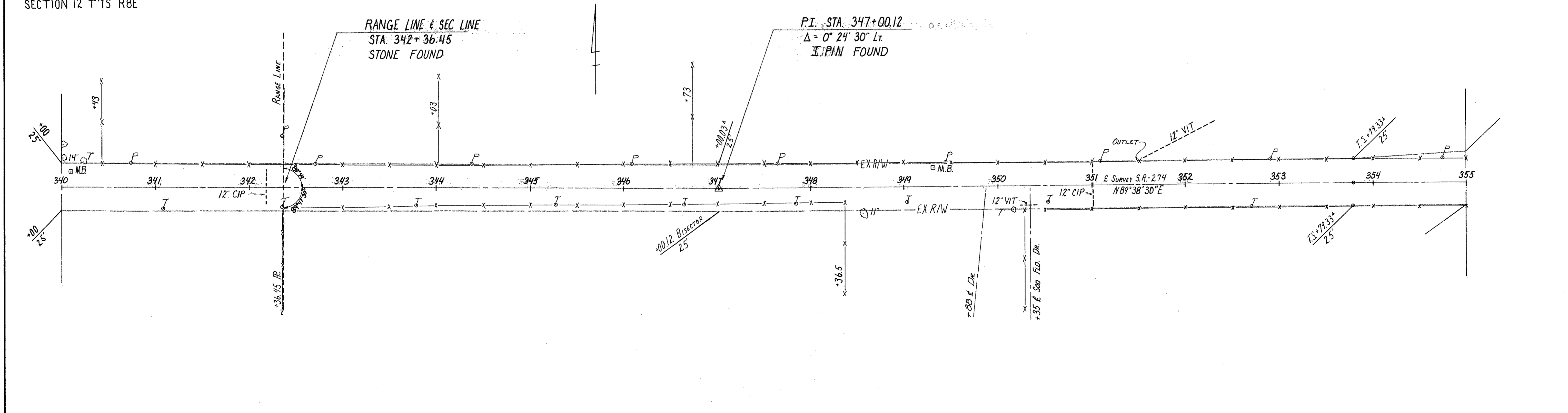


COUNTY ROAD #61 SOUTH  
ESTABLISHED 60' R/W IN 1835  
COMMISSIONER'S JOURNAL 4, PAGE 189

S.R.-274 FROM COUNTY ROAD #61 SOUTH  
EAST TO THE ROBERT'S LINE  
WIDENED TO 50' R/W IN 1888  
FREE TURN PIKE RECORD 6, PAGE 21

WASHINGTON TOWNSHIP  
SECTION 12 T7S R8E

WASHINGTON TOWNSHIP SECTION 7 T7S R9E



WASHINGTON TOWNSHIP  
SECTION 13 T7S R8E

WASHINGTON TOWNSHIP SECTION 18 T9S R9E

FOR REVISED R/W LEFT  
SEE LOG-274-6.70  
1984 R/W PLAN  
ACQUISITION EASEMENT VOLUME 406, PAGE 970-972

WASHINGTON TOWNSHIP SECTION 7 T7S R9E

FHWA REGION	STATE	PROJECT
5	OHIO	

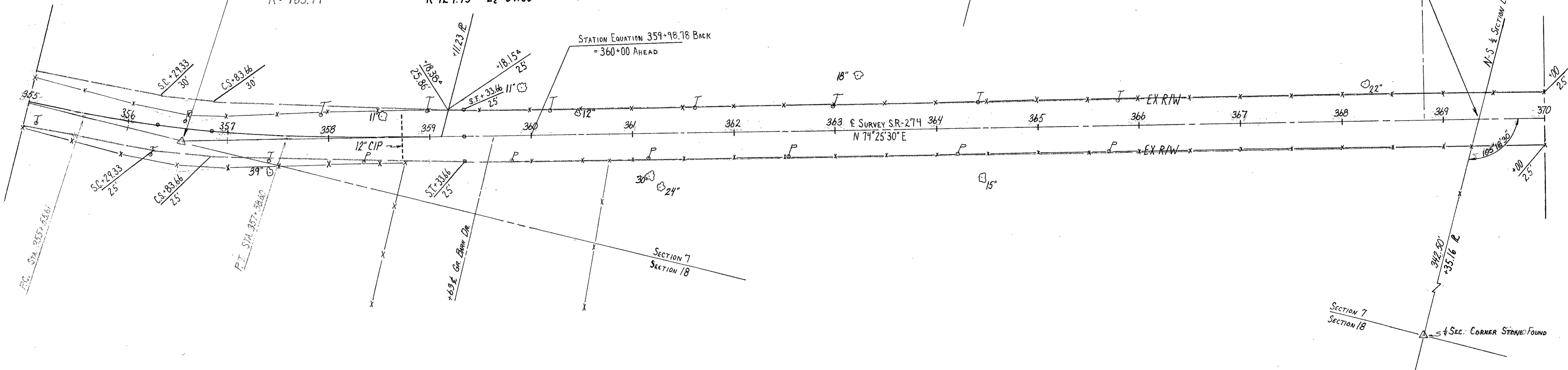
4  
10

LOGAN COUNTY  
LOG-274-5.05  
R/W PLAN

P.I. STA. 356+57.65  
 $\Delta = 15^\circ 13' Lt.$   
 $D = 7^\circ 30'$   
 $T = 102.04'$   
 $E = 6.74'$   
 $L = 202.89'$   
 $R = 763.94'$

CURVE DATA  
 $D = 5^\circ$   
 $R = 1145.92'$   
 $L_c = 250'$   
 $Q_c = 6.25'$   
 $P = 2.27'$   
 $K = 124.95'$

$X_c = 249.70'$   
 $Y_c = 9.08'$   
 $T_c = 278.32'$   
 $E_c = 12.47'$   
 $A_c = 2^\circ 43'$   
 $L_c = 54.33'$

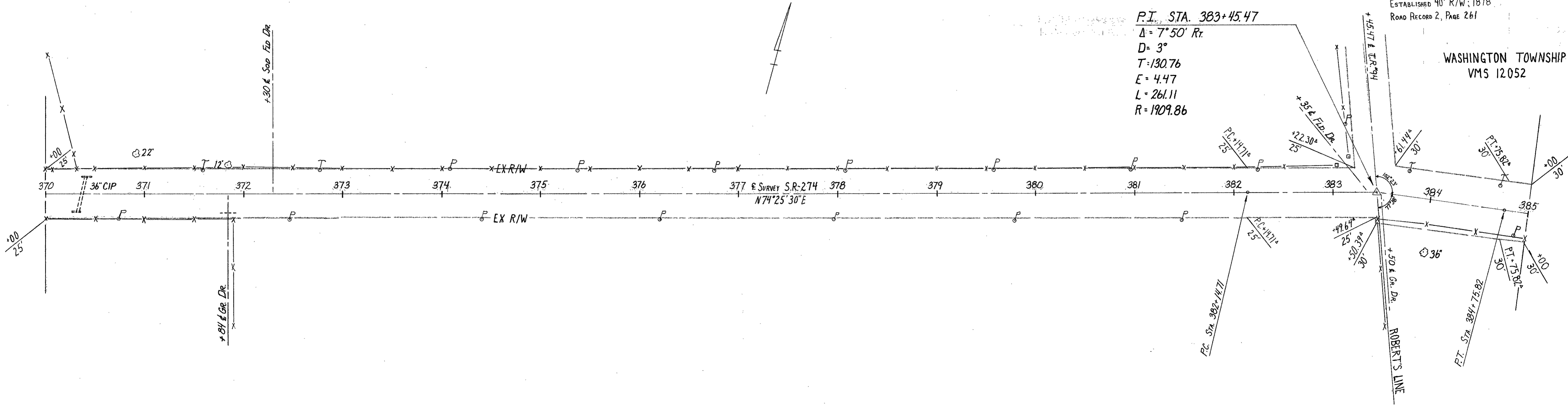


WASHINGTON TOWNSHIP SECTION 7 T7S R9E  
WASHINGTON TOWNSHIP SECTION 7 T7S R9E

P.I. STA. 383+45.47  
 $\Delta = 7^\circ 50' Rt.$   
 $D = 3^\circ$   
 $T = 130.76'$   
 $E = 4.47'$   
 $L = 261.11'$   
 $R = 1909.86'$

TOWNSHIP ROAD #94  
ESTABLISHED 40' R/W; 1878  
ROAD RECORD 2, PAGE 261

WASHINGTON TOWNSHIP  
VMS 12052



WASHINGTON TOWNSHIP SECTION 7 T7S R9E

WASHINGTON TOWNSHIP  
VMS 12168

S.R.-274 FROM THE ROBERT'S LINE EAST  
 TO A POINT 40 RODS WEST OF THE NORTHWEST  
 CORNER OF VMS 9903 (S.R.-117) ESTABLISHED  
 60' R/W IN 1833  
 COMMISSIONER'S JOURNAL 3, PAGE 98.

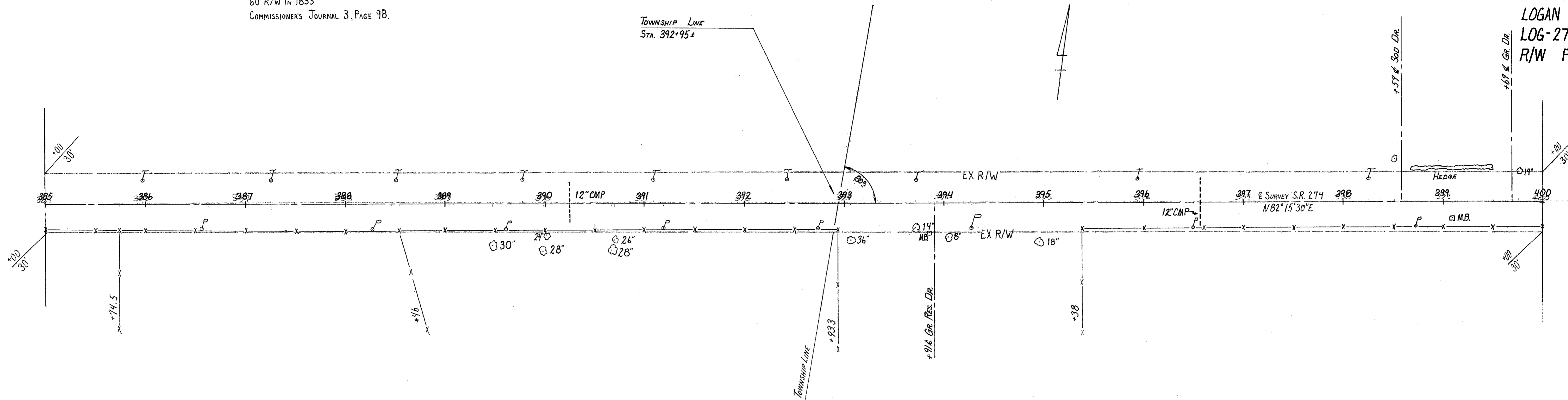
WASHINGTON TOWNSHIP VMS 12052

M<sup>c</sup>ARTHUR TOWNSHIP VMS12052

FHWA REGION	STATE	PROJECT
5	OHIO	

5  
10

LOGAN COUNTY  
 LOG-274-5.05  
 R/W PLAN



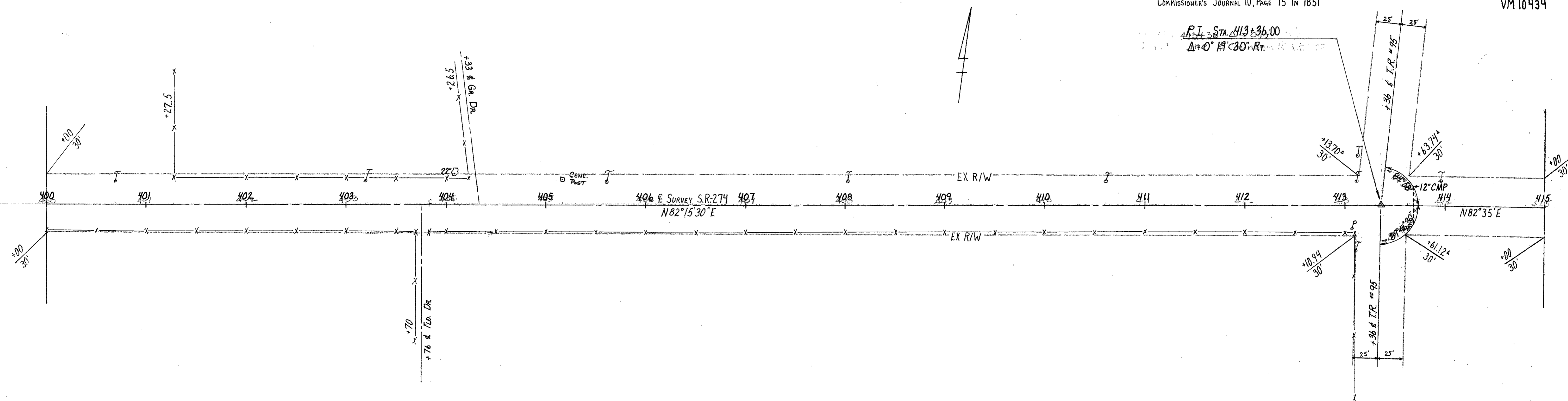
WASHINGTON TOWNSHIP VMS 12168

M<sup>c</sup>ARTHUR TOWNSHIP VM 12168

M<sup>c</sup>ARTHUR TOWNSHIP VMS 12052

TOWNSHIP ROAD #95 ESTABLISHED 50' R/W  
 COMMISSIONER'S JOURNAL 10, PAGE 75 IN 1851

M<sup>c</sup>ARTHUR TOWNSHIP  
 VM 10434



M<sup>c</sup>ARTHUR TOWNSHIP VMS 12168

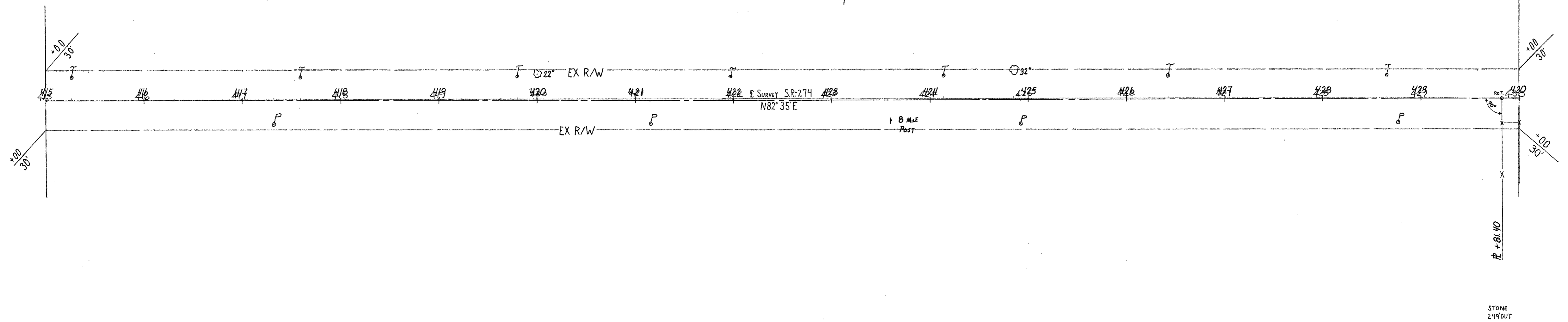
M<sup>c</sup>ARTHUR TOWNSHIP  
 VMS 9902

M<sup>c</sup>ARTHUR TOWNSHIP VMS 10434

FHWA REGION	STATE	PROJECT
5	OHIO	

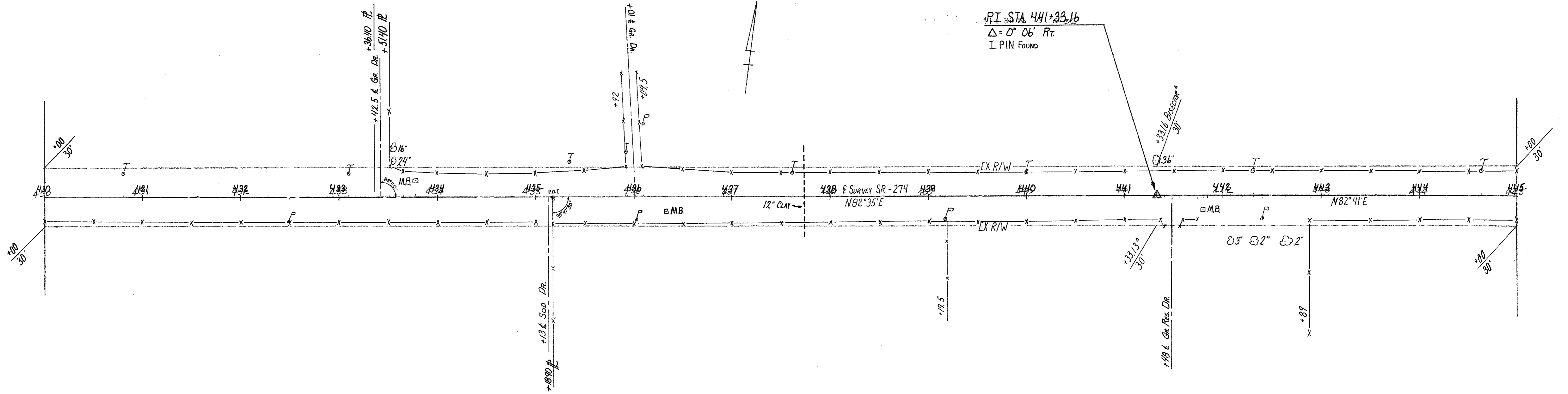
6  
10

LOGAN COUNTY  
LOG-274-5.05  
R/W PLAN



M<sup>c</sup>ARTHUR TOWNSHIP VMS 9902

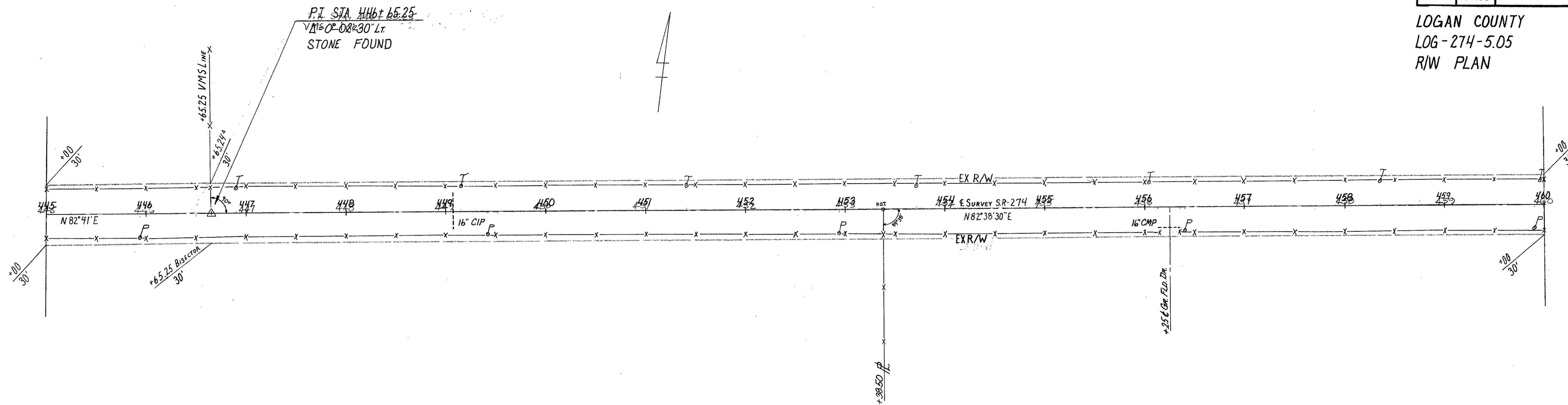
M<sup>c</sup>ARTHUR TOWNSHIP VMS 10434



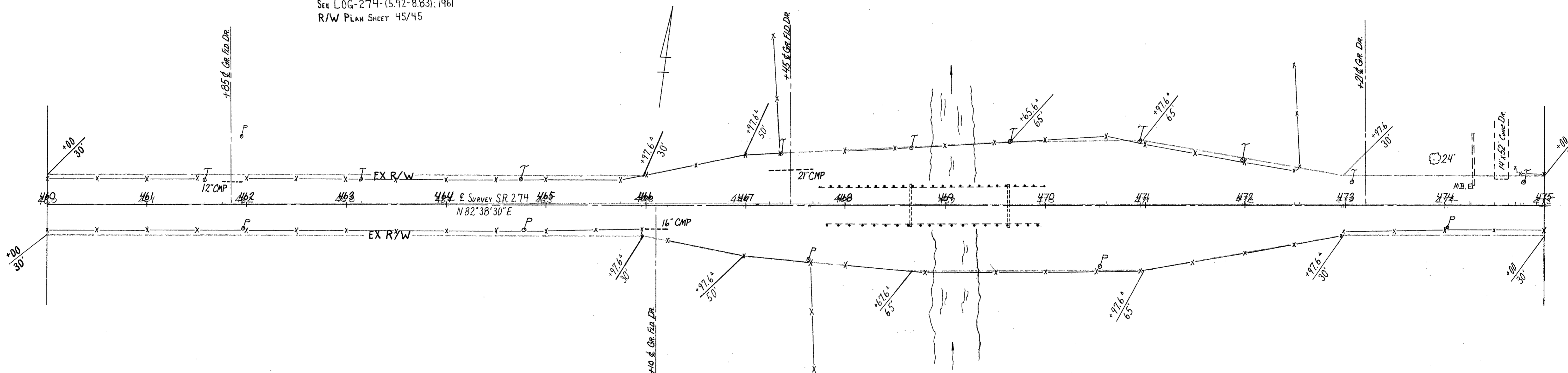
M<sup>c</sup>ARTHUR TOWNSHIP VMS 9902

FHWA REGION	STATE	PROJECT
5	OHIO	

LOGAN COUNTY  
 LOG-274-5.05  
 R/W PLAN



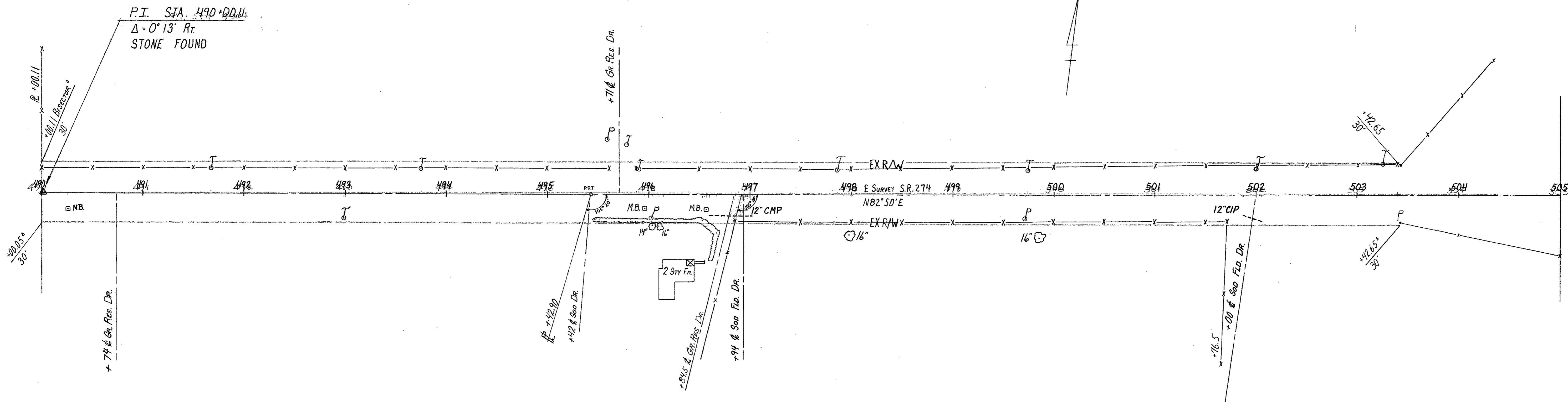
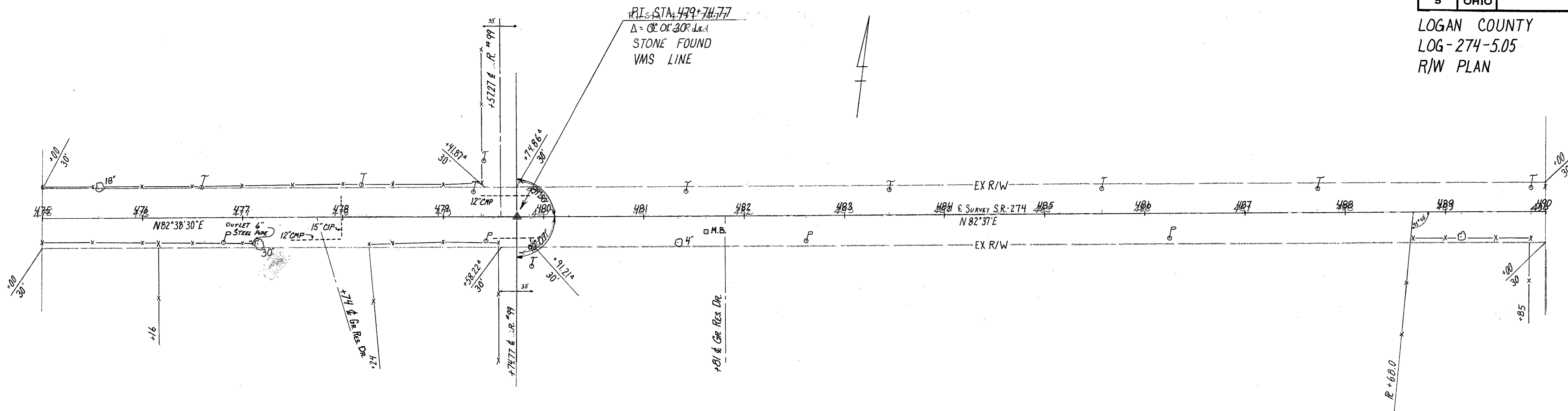
FOR STATION 465+97.60 TO STATION 472+97.60 THIS PLAN  
 See LOG-274-(5.92-8.83); 1961  
 R/W PLAN SHEET 45/45



LOG-274

FHWA REGION	STATE	PROJECT
5	OHIO	

LOGAN COUNTY  
 LOG-274-5.05  
 R/W PLAN

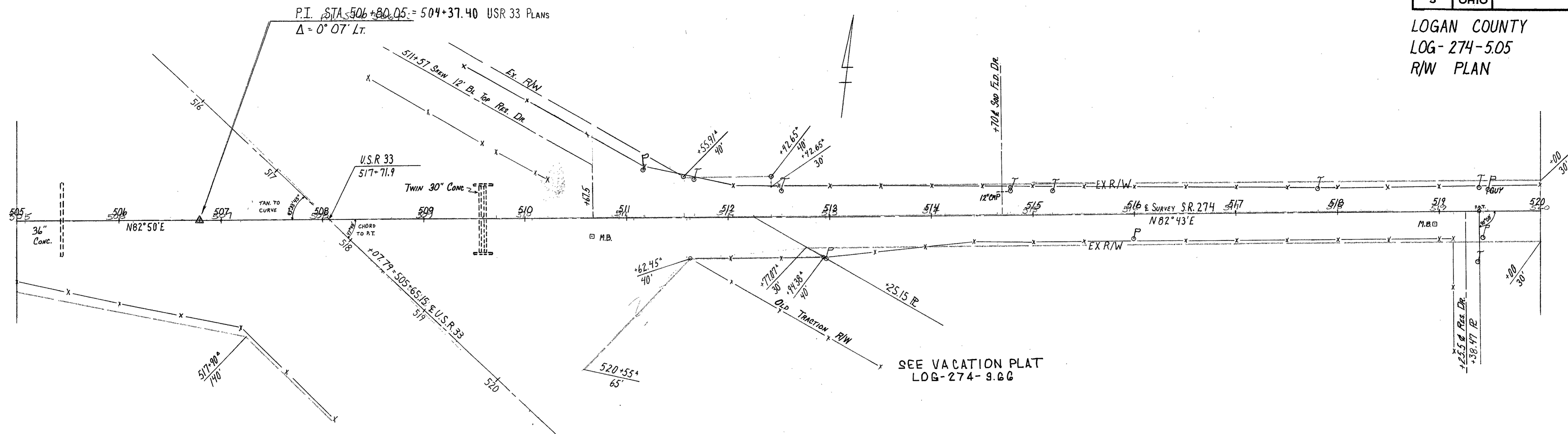




M<sup>c</sup>ARTHUR TOWNSHIP VMS 9928

FHWA REGION	STATE	PROJECT
5	OHIO	

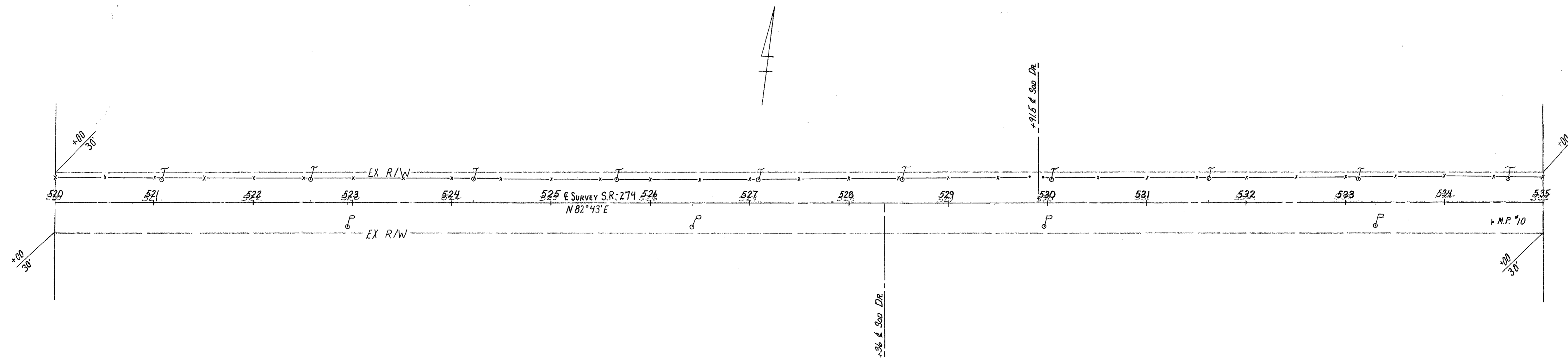
LOGAN COUNTY  
LOG-274-5.05  
R/W PLAN



FOR R/W FROM STATION 503+42.65 TO 512+94.35  
SEE LOG-33-5.85  
R/W SHEET 191 OF 195 (1958)

M<sup>c</sup>ARTHUR TOWNSHIP VMS 9903

M<sup>c</sup>ARTHUR TOWNSHIP VMS 9928



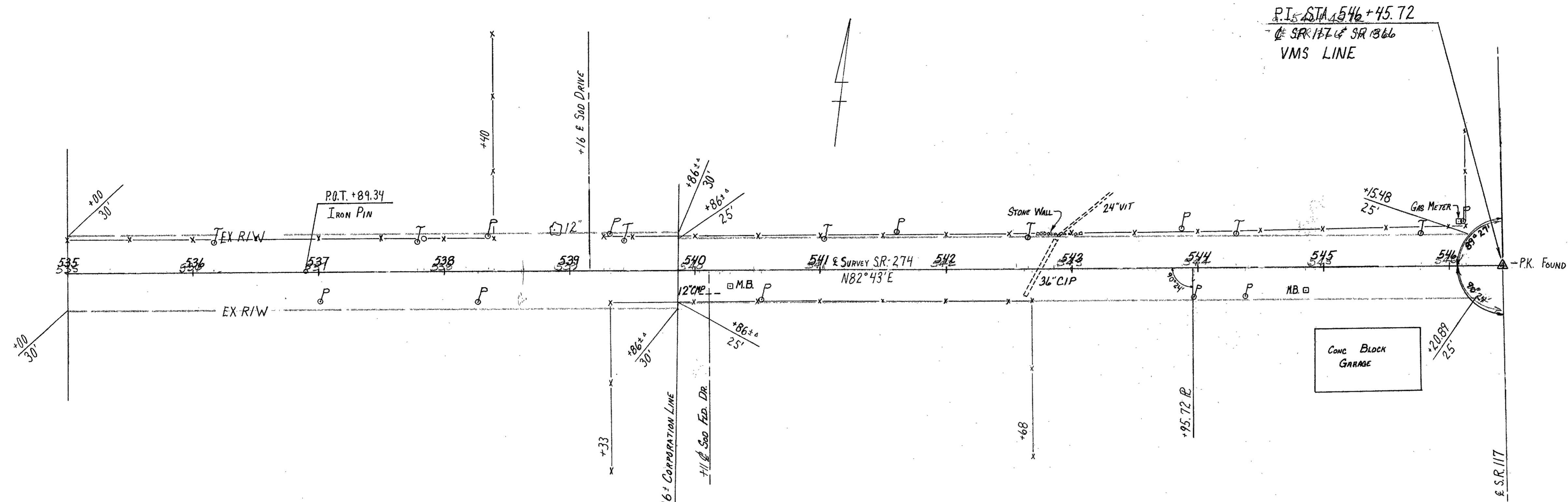
M<sup>c</sup>ARTHUR TOWNSHIP VMS 9903

M<sup>c</sup>ARTHUR TOWNSHIP VMS 9928

FHWA REGION	STATE	PROJECT
5	OHIO	

10
10

LOGAN COUNTY  
LOG-274-5.05  
R/W PLAN



SR-274 FROM A POINT 40 RODS WEST OF THE  
NORTHEAST CORNER OF VMS TO THE  
NORTHEAST CORNER OF VMS 9903 (SR-117)  
WIDENED TO 50' R/W IN 1888  
FREE TURNPIKE RECORD 6, PAGE 21

M<sup>c</sup>ARTHUR TOWNSHIP VMS 9903

VILLAGE OF HUNTSVILLE