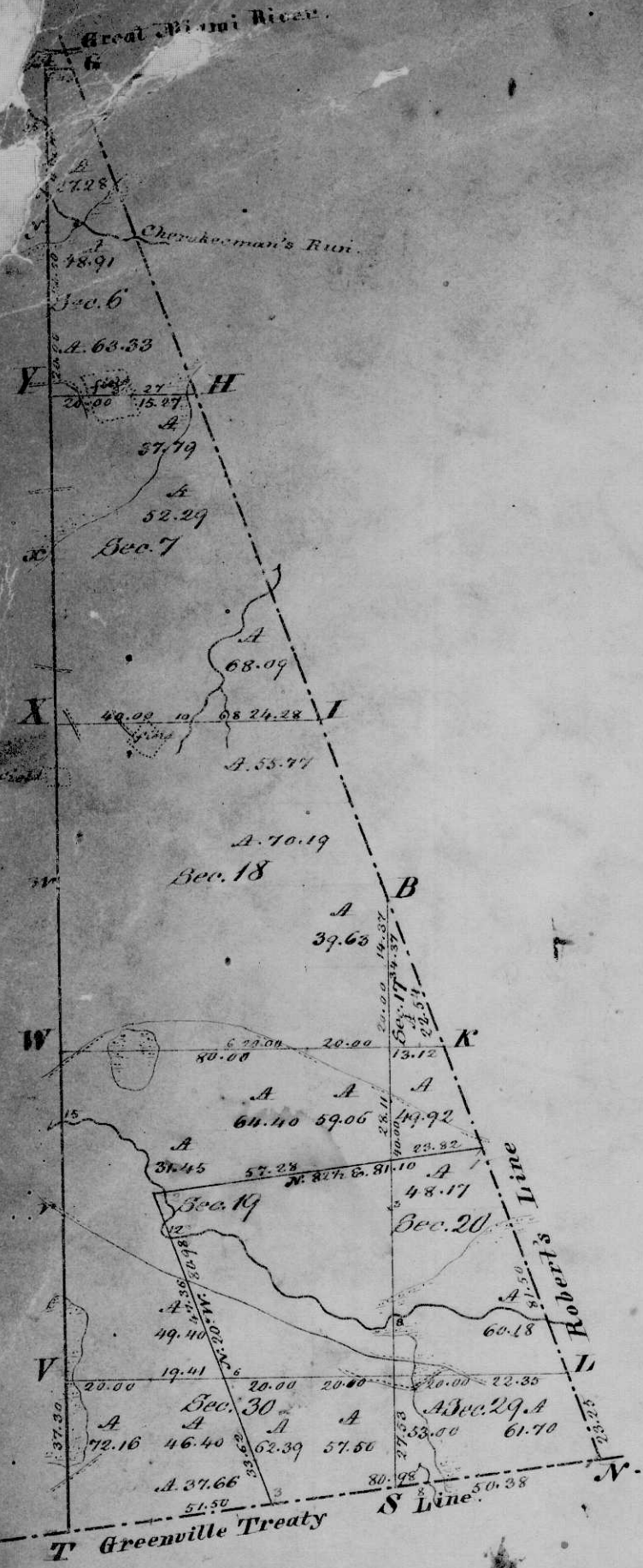


Township N^o 7 S, Range N^o



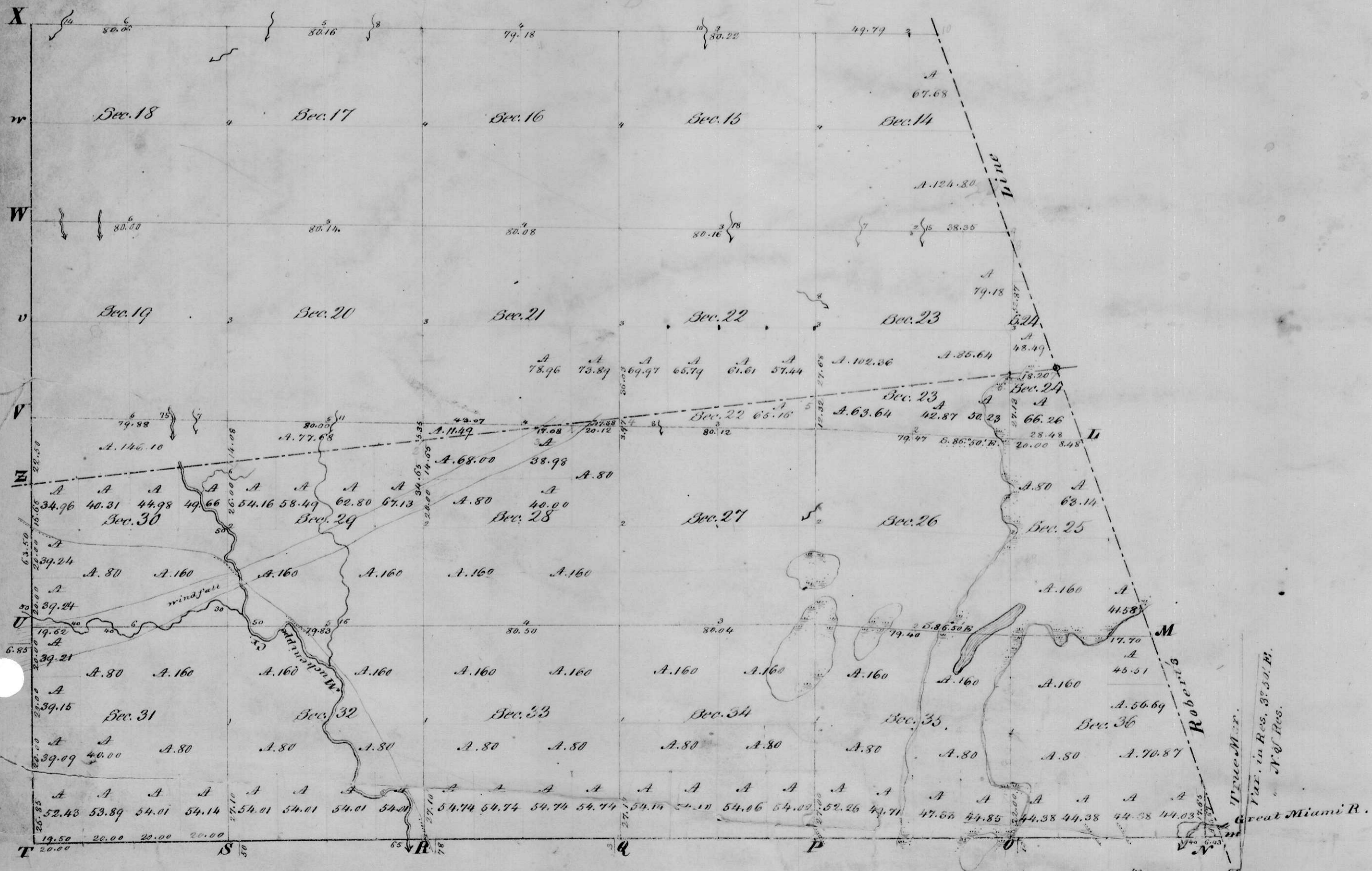
Index to the Maps

T. of S. Co.	Page No.
1	1
" "	" 2
" "	" 5
2 Range S Co.	" 7
1	" 9
203	" 11
4	" 13
6	" 15
1820	" 17
5	" 19
4	" 20
6	" 21

Township N^o 7 S, Range N^o 8 E. 1st Mer.



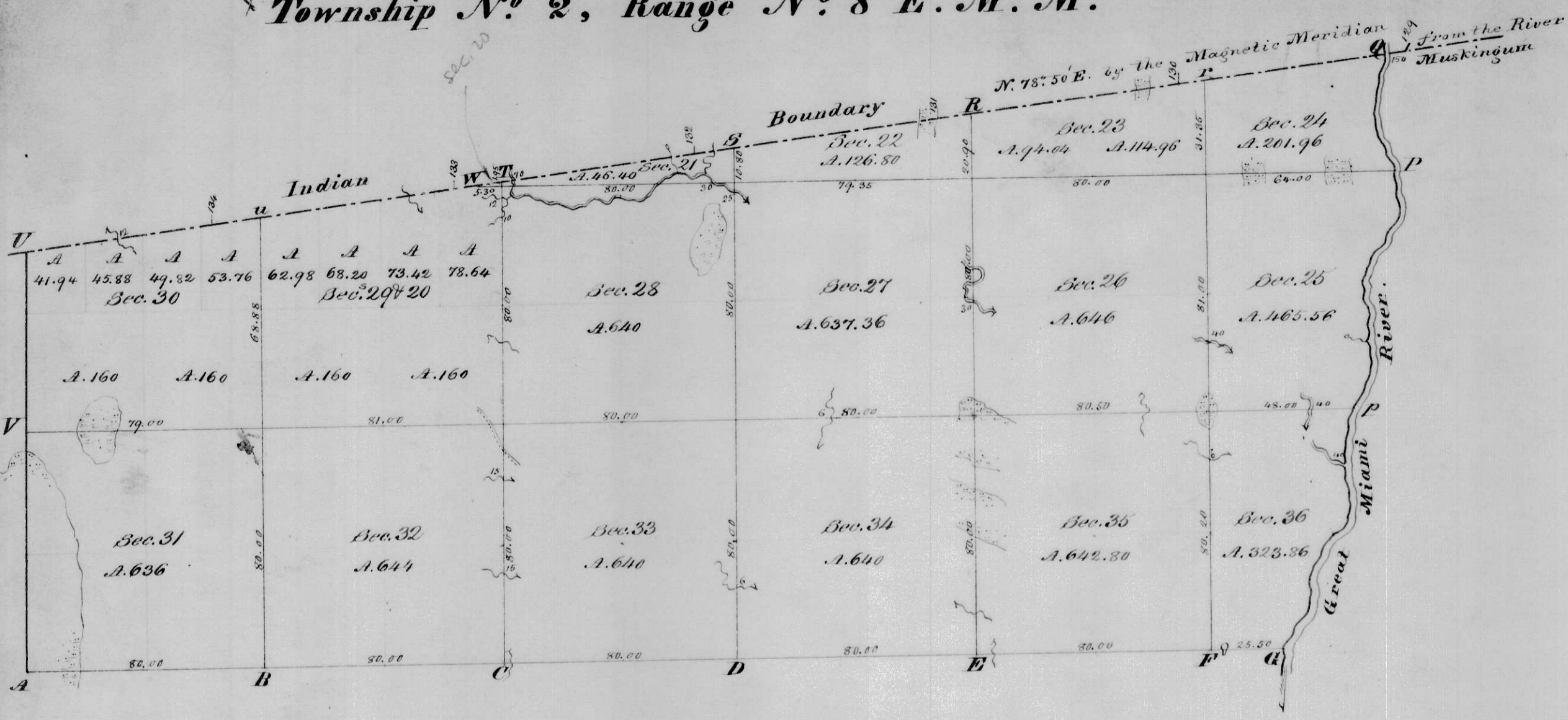
* Township N^o 6 S, Range N^o 8 E. 1st Mer.



Surveyed North of Reservation in 1820 by James Heaton,
 in " " 1832 " James W. Kiloy, D. S.

This above Plat is truly copied from the Records
 of the Office.

Township N^o 2, Range N^o 8 E. M. M.



Magn. Mer.
Scale 40ch to an Inch

Township N^o 1, Range N^o 8 E. M. M

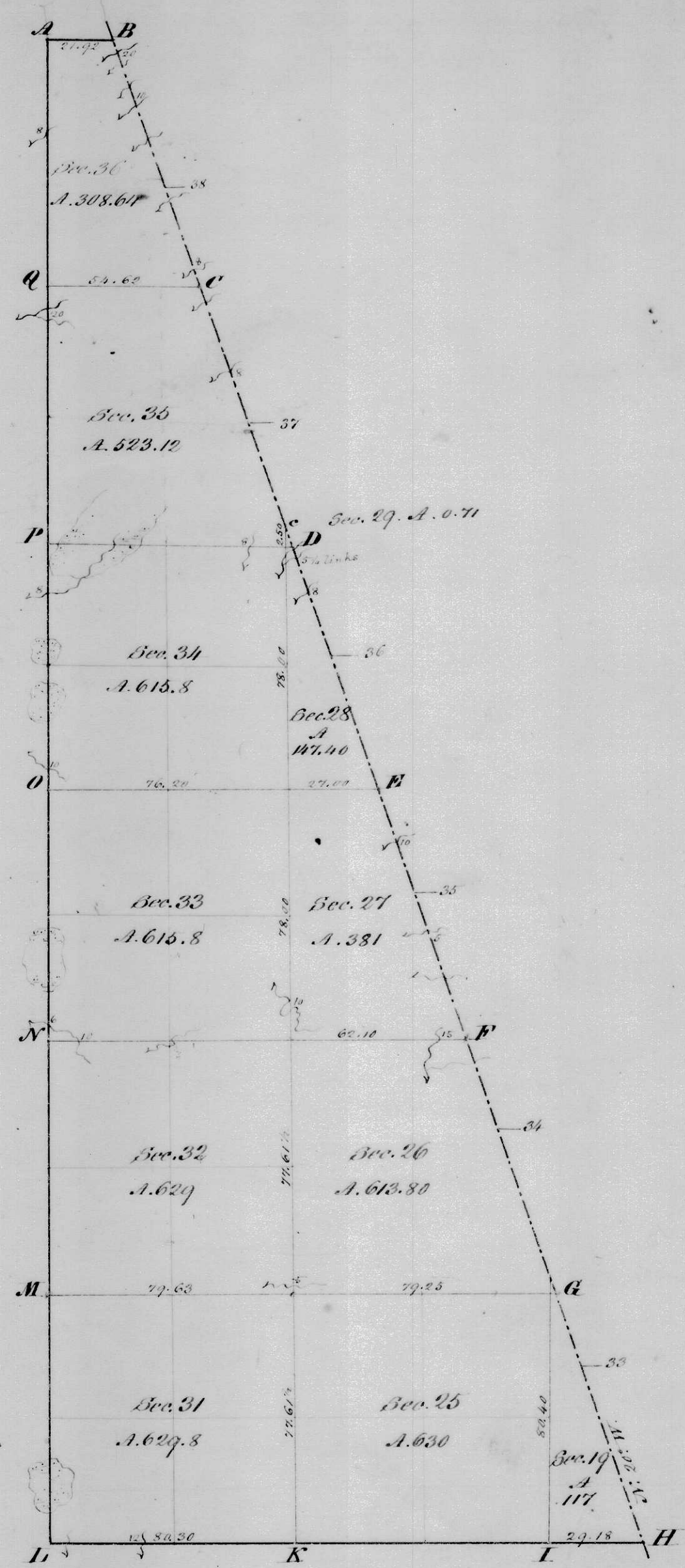


Scale 40 ch^s to an Inch.
 Magn. Mer.

Surveyed in 1799 by Daniel C. Cooper
 Subdivided in 1805 by Steph^r V. Marf^r Ludlow.

The above Plat is truly copied from the Original
 on file in this Office.

13
 Township N^o 4, Range N^o 14 E. M.R^s

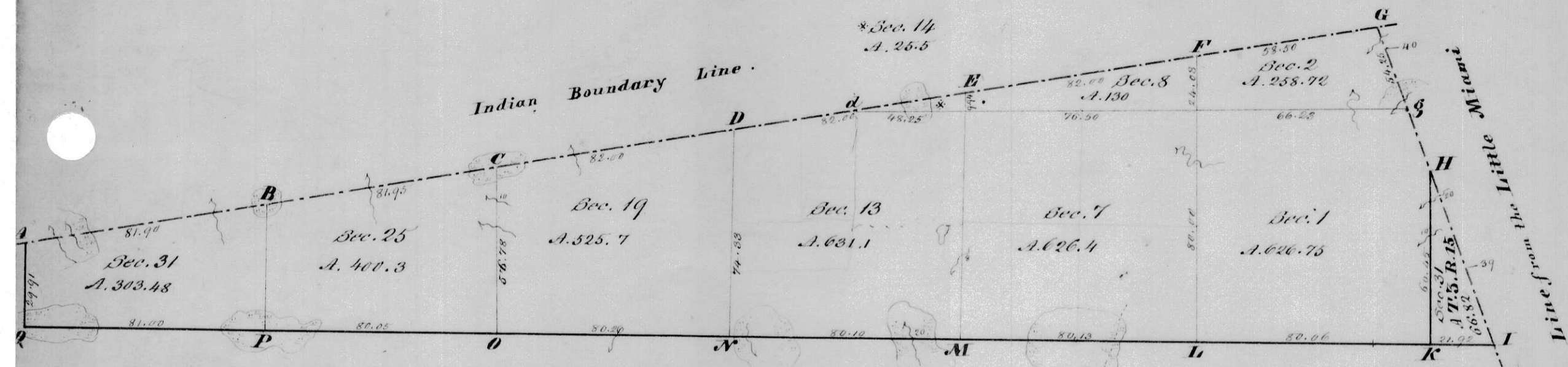


Scale 40 ch to an Inch

Surveyed in 1803 by Israel Ludlow
 Subdivided in 1805 by Lewis Cass

The above Plat is truly copied from the Original
 on file in this Office.

Township N^o 2 & 3, Range N^o 15 E. M. R.^s



Scale 40 ch. to an Inch

Magn. Mer.

Surveyed in 1803 by Israel Ludlow
Subdivided by Lewis Cass

The above Plat is truly copied from the Original
on file in this Office.

Surveyor General's Office,
Cincinnati, July 12. 1836.

[Handwritten Signature]

Township N^o 3, Range N^o 14 E. M. R.



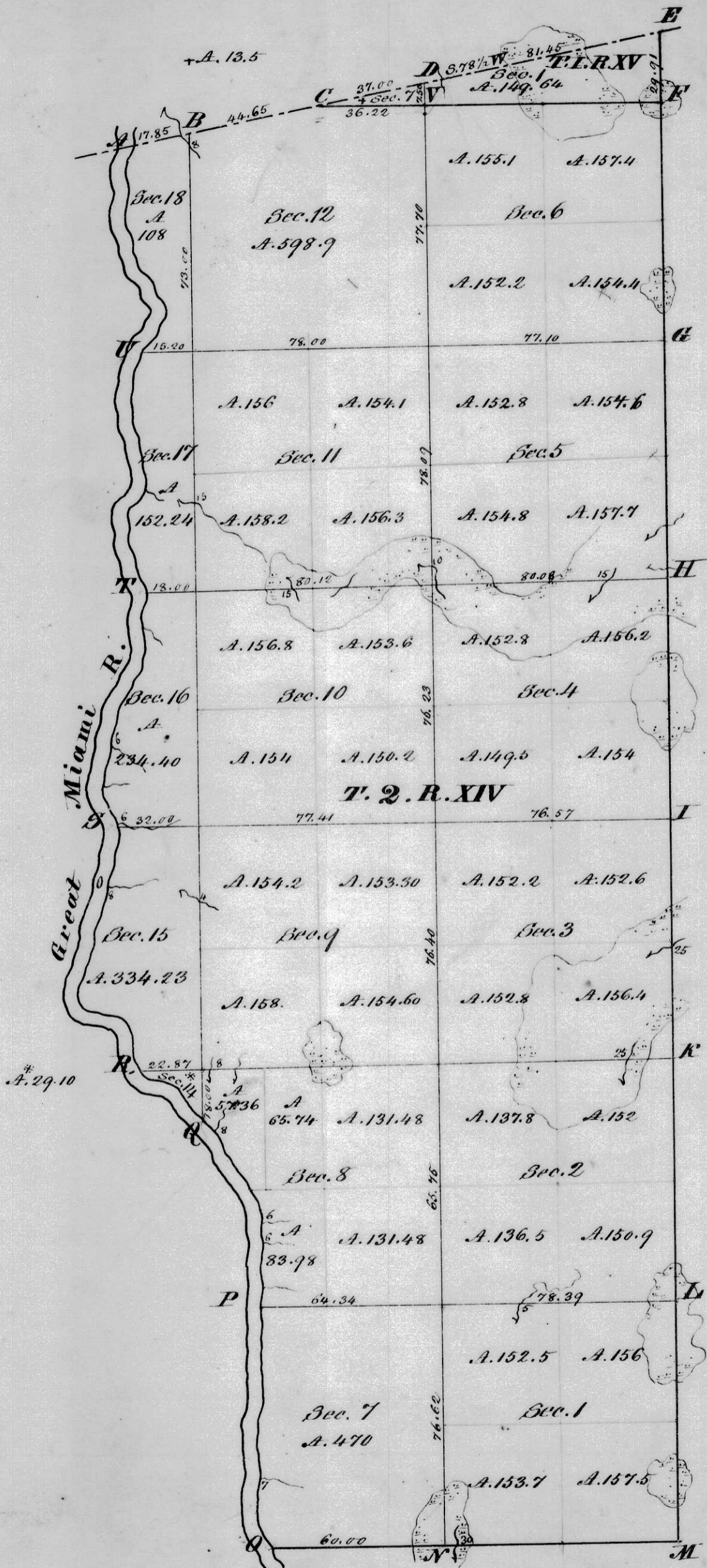
Surveyed by Israel Ludlow in 1803.
 Subdivided by Lewis Cap in 1805.

Scale 40 ch^s to an Inch

The above Map is a true Copy of the Original
 on file in this Office.

Ludlow's Office, *[Signature]*

17



Surveyed in 1803 by Israel Ludlow.
 Subdivided in 1805 by Lewis Cass.

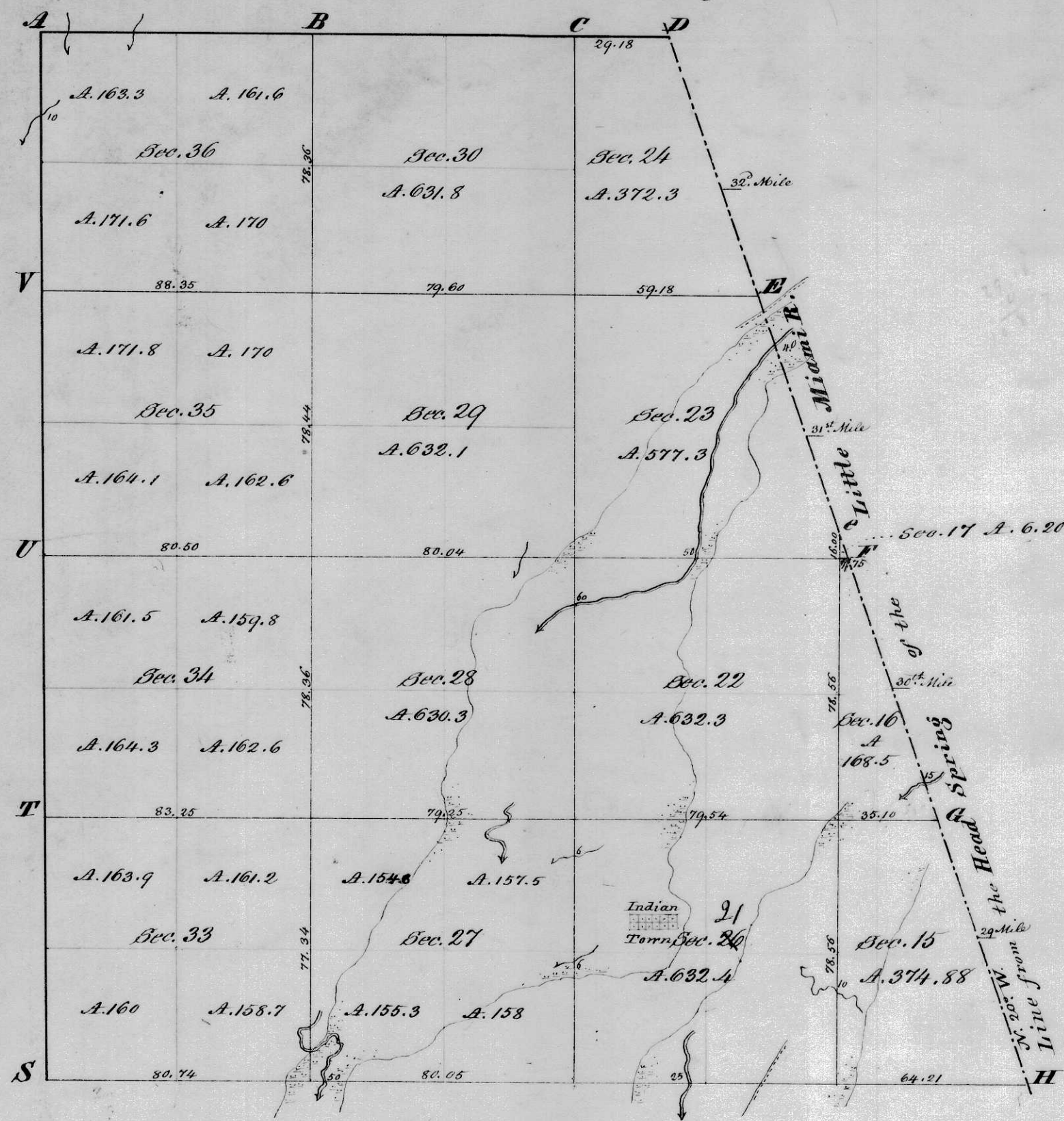
The above Plat is truly copied from the Original
 & file in this Office

Scale 40 chs to an Inch

Robert Smith S. G.

Magn. Mer.

x Township N: 5, Range N: 13 E.M.R:



Surveyed in 1813 by Israel Ludlow.
Subdivided in 1805 by Lewis Cass

Scale 40 chains to an Inch

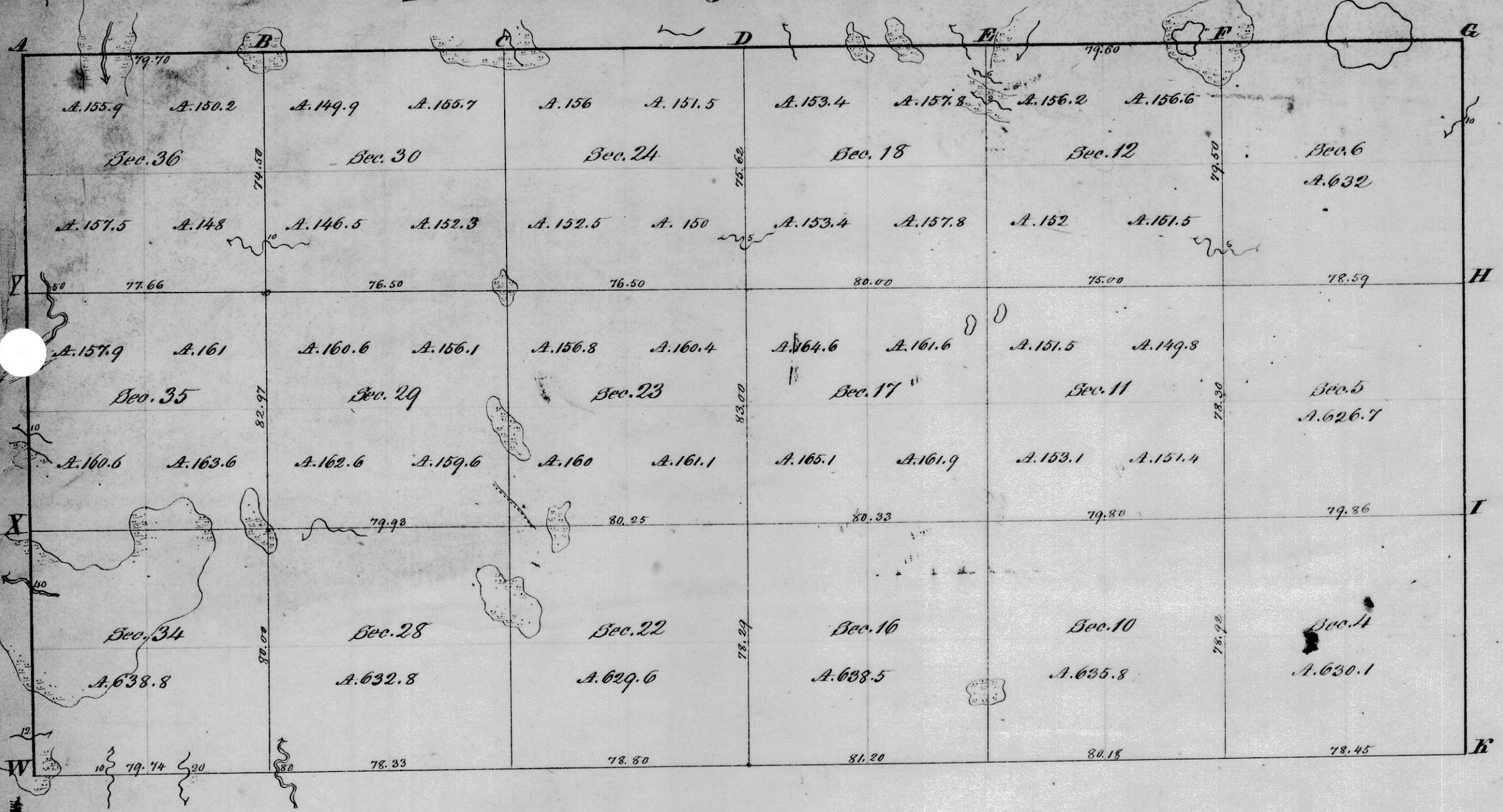
Magn. Mer.

The above Plat is truly copied from the Original
on file in this Office.

Surveyor General's Office

Robert L. Smith

Township N^o 4 , Range N^o 13 E. M. R.



Surveyed in 1803 by Israel Ludlow
 Subdivided in 1805 by Lewis Cass

Scale 40 ch^s to an Inch.

The above Plat. is truly copied from the Original
 on file in this Office.

Surveyor General's Office,

R. H. Smith S. G.

N: 3. Range N: 13 E. M.R:

