

Surveyed for Benjamin Poifran $533\frac{2}{3}$ acres of land on part of a Military Warrant No 5024 on Beaver run a branch of Dartsy's creek: Beginning at three buckeyes and an elm easterly corner to Philip Slaughters survey No. 3154 and Northerly corner to George M^cOrdies survey No. 3155 running with Slaughters line N. 38. W. 400 poles crossing Beaver run several times to three hickories northerly corner to said Slaughters survey and southerly corner to Williams Croghans survey No. 4689, thence with Croghans line N. 52 E. 217 poles to a buckeye white oak and hickory in said line; thence S. 38. E. 400 poles to three sugar trees thence S 52 N

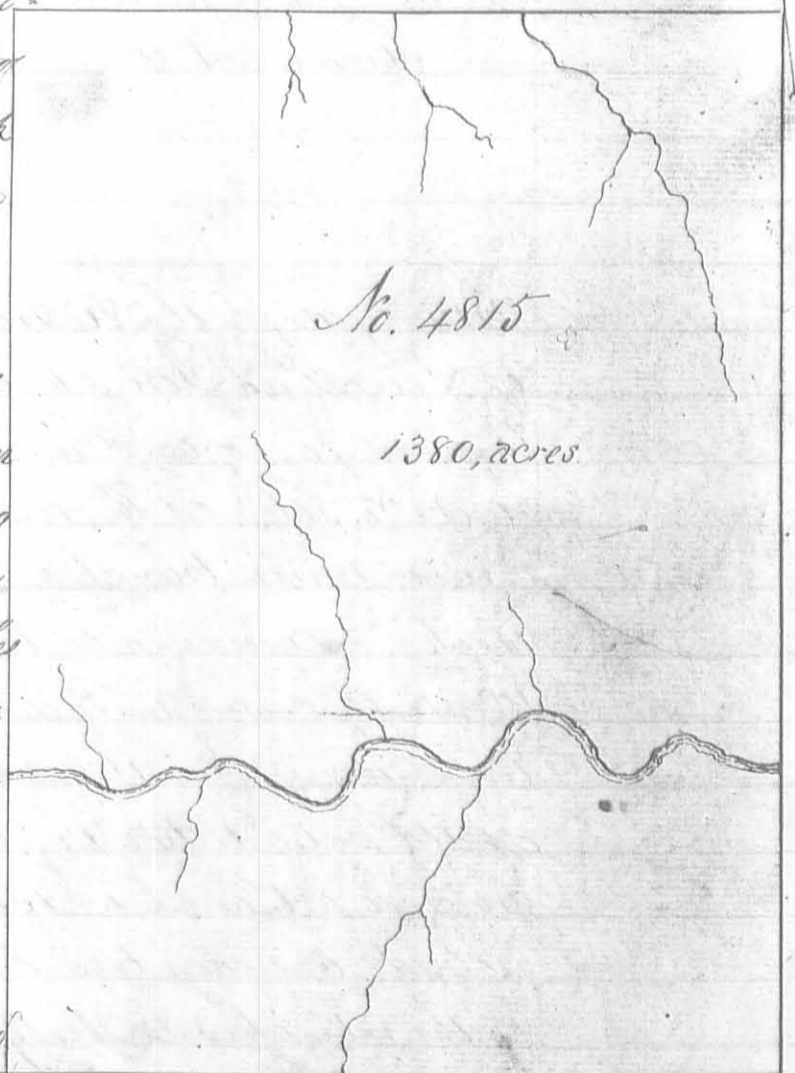
217 poles to the beginning.

Alexander Kerr
James Stephens 3/106
Joshua Sharp, M. S. R.

James Galloway Jun^r D. S.
December 11th 1805
December 13th 1805

Surveyed for the representation of Alexander Kerr, 1380 acres of land on part of a Military Warrant No. 5063 on Mile creek a branch of the west fork of Scioto. Beginning at two beeches and a lynn southwest corner to David Duncans survey No 3443, Northwest corner to said Duncans survey No 3444 and southeast corner to Peter Manifold survey No. 2832 running running with the line of Manifold survey N. 38. W. 400 poles crossing several branches of books creek to a white oak, elm lynn and hickory, southwest corner to said Manifold survey; thence S. 72 W. 552 poles crossing the creek at 402 poles and passing the Northwest corner of James Galloway Jun^r survey No 4813 and with his line to two sugar trees an ash and lynn southeast corner to said survey; thence S. 83. E. 400 poles crossing a branch to a white oak, red oak and sugar tree; thence N. 7. E. 552 poles passing the southeast corner of said Duncans survey No. 3444 and with his line crossing the creek at 402 poles to the beginning.

Alexander Kerr
James Stephens 3/106
Joshua Sharp M. S. R.



James Galloway Jun^r D. S.
December 11th 1805
December 14th 1805



Surveyed for James Galloway Sur. 210
500 acres of land on a military warrant No
5062 on Mill Creek: Beginning at a sugar
tree hickory and beech, the beech marked
I.G.K. 92 poles N 85 E from the mouth of Otter
creek, running S. 7. W 190 poles crossing Mill
creek at 40 poles to two sugar trees an ash
and lym, thence N. 83. W. 250 poles crossing
Otter Creek at 190 poles to a lym ash and
buckeye, thence N. 7. E. 320 poles crossing a
branch at 80 and on at 280 poles to two
sugar trees and a buckeye; thence S. 83. E. 250 poles crossing Mill
creek to two buckeyes an ash and lym; thence S. 7. W 130 poles to
the beginning.

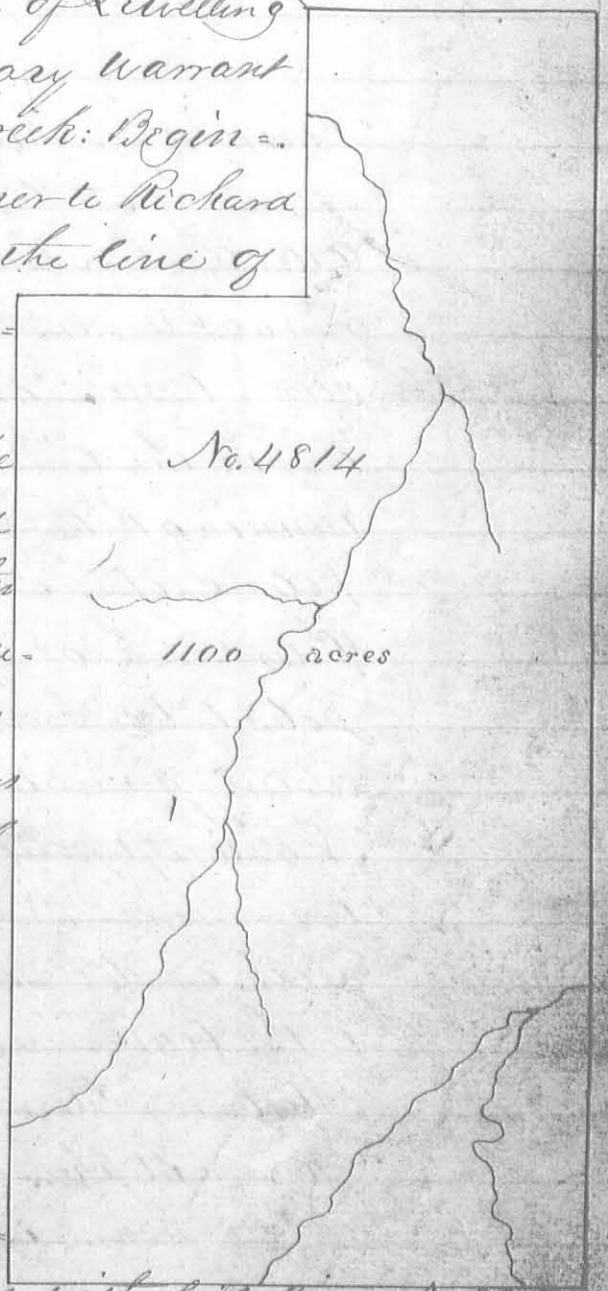
Alexander Kerr 3
James Stephens 3 C.B.
Joshua Sharp M.K.O.

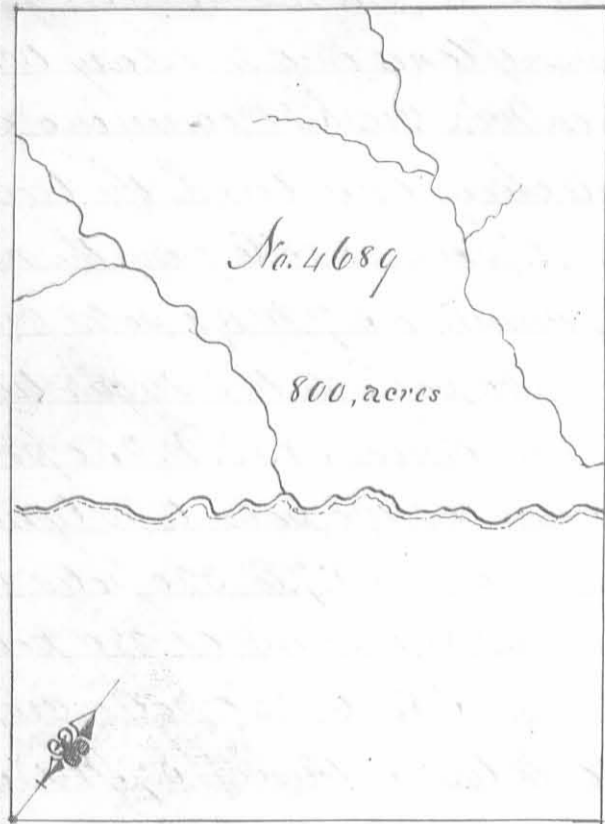
James Galloway Sur. 210
December 12th 1805
December 14th 1805

Survey as for the Representative of Levellin
Jones 1100 acres of land on a military warrant
No. 5066 on the waters of Darly's Creek: Begin-
ning at three hackberries westerly corner to Richard
Stephensons survey No 2669 and in the line of
Peter Meanifolds survey No 2833 run-
ning with Meanifolds line S. 52. W.
150 poles crossing a branch to a stake
in a prairie southerly corner to said
Meanifolds survey, thence with another
of his lines N. 38 W 150 poles to two su-
gar trees, an ash and walnut in said
line and Easterly corner to Henry Whiting's
survey No 102, thence with Whiting's line S
52 W. 572 poles crossing a branch at 430
poles to a red oak and sugar tree; thence
S. 38. E. 300 poles crossing a branch at 130
poles and a creek at 270 poles to three
white oaks; thence N 52 E. 662 poles
crossing the creek to a stake in a prai-
rie in the line of Stephensons survey; thence with his line N. 38 W
150 poles to the beginning.

Alexander Kerr 3
James Stephens 3 C.B. Joshua Sharp M.K.O.

James Galloway Sur. 210
December 12th 1805
December 14th 1805





Surveyed for William Croghan 800 acres of land on two Military Warrants No. 211, 1437 and part of No. 369 on Otter creek; beginning at three hickories northerly corner to Philip Slaughter's survey No. 3154 running N. 52, E. 305 poles to an ironwood lynn and buckeye, thence N. 38, W. 420 poles crossing a branch at 38, Otter creek at 154 and a branch at 180 poles to two buckeyes and a hickory; thence S. 52, W. 305 poles crossing a branch at 118 poles to two beeches and an ash; thence S. 38, E. 420 poles crossing several branches and Otter

creek to the beginning.

Alexander Kerr, 3

James Stephens 3 66

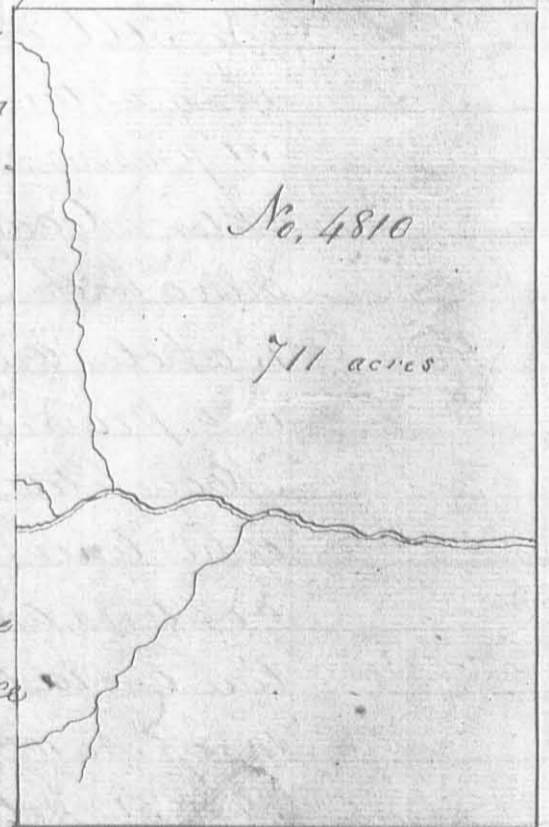
Joshua Sharp M. S. R.

James Galloway Jun. D. S.

December 12th 1805

December 14th 1805

Surveyed for Richard Call 711 acres of land on part of a Military warrant No. 4974 on Otter Creek, a branch of Mill Creek; Beginning at two buckeyes and a hickory northerly corner to William Croghan's survey No. 4689 and in the line of said Call survey No. 4809 running with Croghan's line S. 38, E. 420 poles, crossing a branch at 160 and at 240 Otter Creek at 276 and a branch at 282 poles to two Ironwoods, a lynn and buckeye easterly corner to said Croghan's survey; thence N. 52 E. 271 poles to two ashes and a sugar tree; thence N. 38 W. 420 poles crossing the creek at 160 poles, to three sugar trees; thence S. 52, W. 271 poles to the beginning.



Alexander Kerr 3

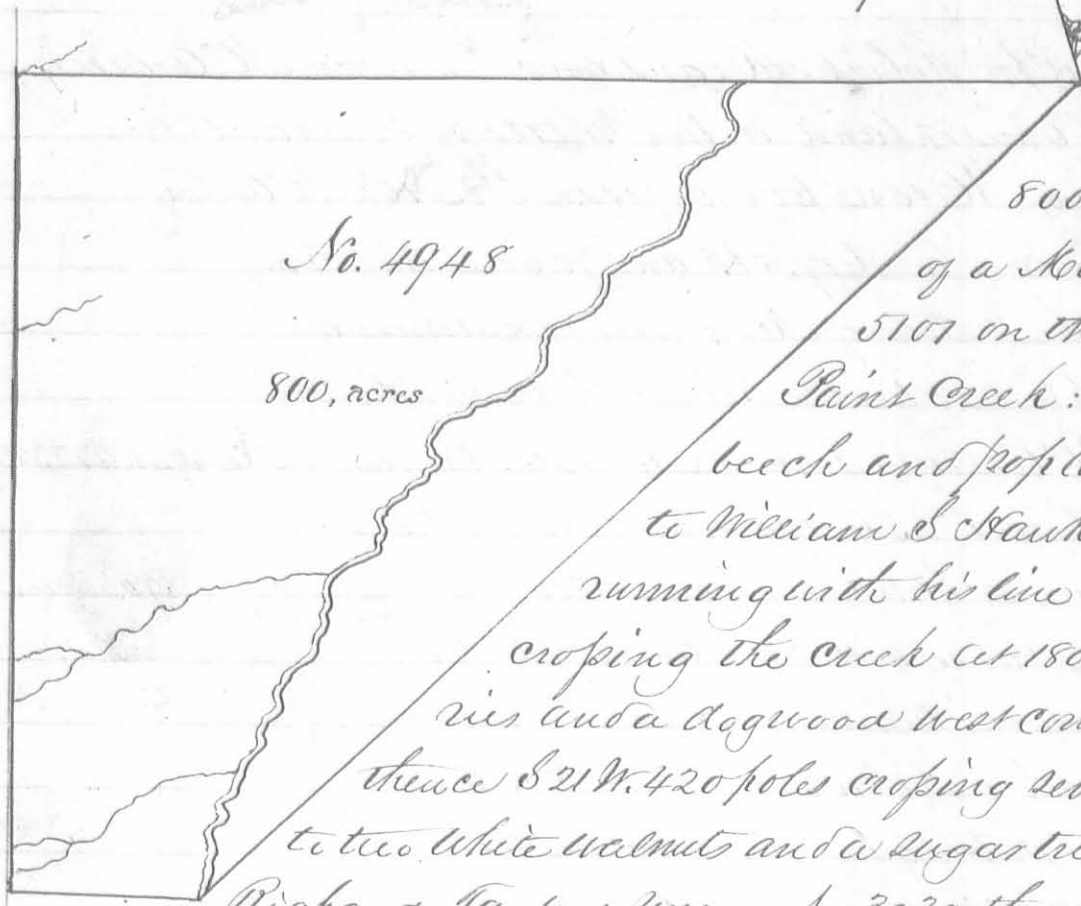
James Stephens 3 66

Joshua Sharp M. S. R.

James Galloway Jun. D. S.

December 12th 1805

December 14th 1805



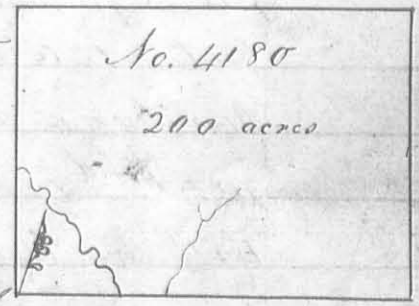
Surveyed for Robert Means

800 acres of land on part of a Military warrant No 5107 on the rocky fork of Paint Creek: Beginning at a beech and poplar Southeast corner to William S Hawkins survey No. 1936 running with his line N. 69. W. 554 poles crossing the creek at 180 poles to two hickories and a dogwood West corner to said Hawkins thence S 21 W. 420 poles crossing several small branches to two white walnuts and a sugar tree North corner to Richard Taylors survey No 3030, thence with his lower line S. 46. E. 98 poles to two elms and two sugar trees on the Northwest bank of the creek; thence N. 68. E 626 poles crossing the creek to the beginning.

Thomas McDonald
James Tompkins
John McDonald mkr

Duncan McArthur D.S.
October 16th 1806
December 4th 1806

Surveyed for John Doherty 200 acres of land on a Military warrant No. 4775 on the waters of Scioto River: Beginning at two beches and a sugar tree Northwest corner to Matthew Bonners survey No. 10919 thence N. 12. W. 154 poles crossing a branch at 68 poles passing four beches at 100 poles to an ash and beech; thence N. 78 E. 208 poles to a beech and hickory Northwest corner to Nathaniel Measies survey No 10801, thence S. 12. E. 154 poles to a beech southwest corner to Measies in the line of Bonners said survey; thence S. 78. W 208 poles crossing a branch at 134 and one at 154 poles to the beginning.



Francis Thompson
David McArthur
Matthew Bonner mkr.

Thomas J. McArthur D.S.
November 1st 1822
November 22nd 1822

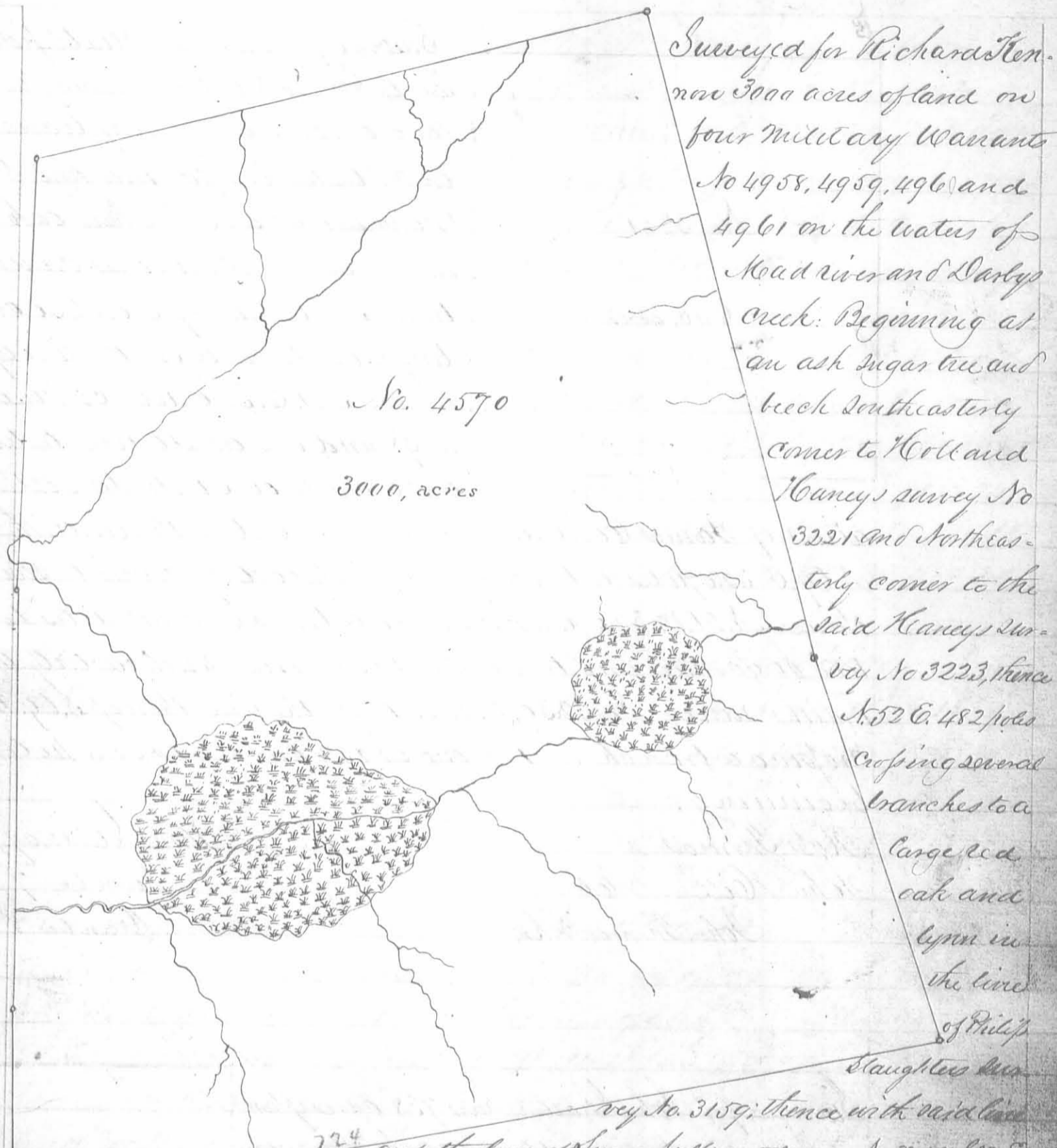
Surveyed for Robert Means and Duncan McArthur
 ap^{ca} 870 acres of land on two Military Warrants and
 part of two; Means 600 acres on No. 5101, McArthur
 270 acres on No 5617, 5618 and 70 acres on No.
 5338 on the waters of Mead river. Beginning
 at a maple and two beeches North corner to,
 said McArthurs survey No. 4413; thence
 with his line S. 25 E 140 poles to a stake
 in the line of Samuel Davis survey
 No 3216; thence with said line S. 75 E 60
 poles to a sugar tree corner to said survey
 thence with another of his lines N. 15 E
 168 poles passing his northeasterly cor-
 ner at 118 poles to a sugar tree red
 elm and small black walnut;
 thence N. 65 E. 206 poles crossing sever-
 al drains to a sugar tree; thence N. 50 E
 316 poles to a stake in the line of John
 McDonalds survey No. 5088, thence with
 said line N. 38. W. 100 poles to two hickories
 and a beech northwesterly corner to said
 survey in the line of Thomas Kolts survey
 No 2674; thence with said line S. 30 W. 207
 poles to a buckeye white walnut and ash
 southeast corner to said survey and easterly cor-
 ner to David Bradfords survey No 3136; thence
 with his line S. 57 1/2 W. 315 poles crossing several
 branches and a lynn easterly corner to John Evans
 survey No 10424 & 10467; thence with his line S. 31 1/2 W
 77 poles to a dogwood ash and beech corner to said survey and
 Northeastly corner to said Evans survey No. 10423, thence with
 said line S. 15 W. 400 crossing several drains to a sugar tree and small
 hickory corner to said survey, thence with another of his lines South 252 poles
 to a stake in said line, thence East 18 poles to two dogwoods and an elm southwesterly corner
 to James McMitts survey No 4195 & 4604; thence with his line North 252 poles to
 a white walnut, ash and sugar tree corner to said survey; thence with another
 of his lines and with the line of said McArthurs said survey N. 15 E. 228
 poles crossing a small branch to the beginning.



Thomas Dickinson
 James Monroe
 Thomas J. McArthur M.k.r.

Duncan McArthur D.S.
 May 3rd 1822
 April 22nd 1823

This I think is an error. It should read 200 acres instead of 270 acres. H.B.



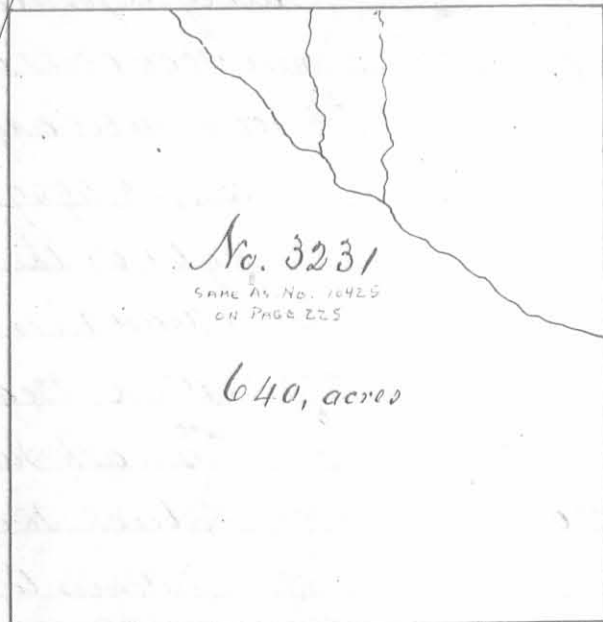
No. 4570
3000, acres

Surveyed for Richard Ken-
non 3000 acres of land on
four military warrants
No 4958, 4959, 4960 and
4961 on the waters of
Mead river and Daryl's
creek: Beginning at
an ash sugar tree and
beech southeasterly
corner to Holland
Nancys survey No
3221 and Northeas-
terly corner to the
said Nancys sur-
vey No 3223, thence
N. 52 E. 482 poles
crossing several
branches to a
large red
oak and
lynn in
the line
of Philip
Slaughters sur-
vey No. 3159; thence with said line

724 and the line of Lucas Sullivan's survey No 3753, S. 38 E.
510 poles crossing several branches of Daryl's creek and mid run of Daryl's
creek at 486 poles to an ash lynn and buckeye southerly corner to Sullivan's
said survey and westerly corner to Robert Powers survey No. 3680; thence with
Powers line S. 39° 30' E 310 poles to an ash and elm in a swamp in said line;
thence S. 56, W. 724 poles crossing several small branches to three sugar trees a lynn
and dogwood in the line of Augustus J. Smith's survey No 3228; thence with said line N. 21
W. 152 poles to two elms northeasterly corner to Smith's said survey and southeasterly
corner to said Smith's survey No. 3226 with the line of No 3226 N. 22° 30' W. 318
poles crossing Mackachacks Creek at 76 poles to a sycamore walnut and elm
northeasterly corner to Smith's said survey and southeasterly corner to said
Nancys survey No 3223, thence with Nancys line N. 21 W. 332 poles crossing
a large branch at 24 and at 40 poles to the beginning.

Clearer Skant 3
William Dox 3 C.C.
James Robinson M.K.V

Walter Dun D.S
July 11th 1818
December 4th 1818



Surveyed for Benjamin Stubblefield here at law to George Stubblefield dec'd 640 acres of land on part of a Military warrant No. 1171 on the waters of Mead river and Darby Creek Beginning at an ash, white oak hickory and sugar tree South west corner to Augustus Smith's survey No. 3230 and South easterly corner to said Smith's survey No. 3229 thence S. 21 E. 320 poles crossing a branch at 98 and one at 210 poles to two dogwoods and a white oak in the line of the represent-

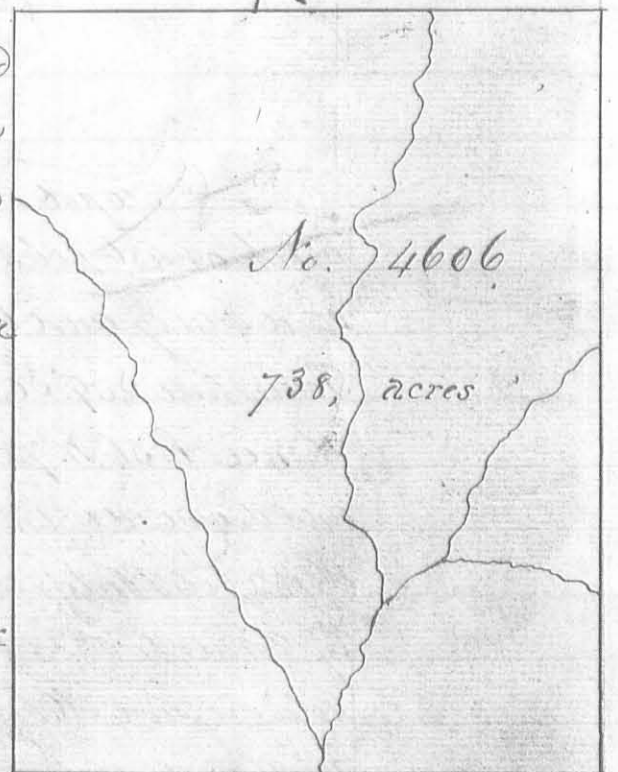
atives of James Caddenwoods survey No. 3614, thence with their line N. 69 E. 320 poles to two hickories northeasterly corner to said survey thence N. 21 W. 320 poles crossing a branch at 148 poles to an ash two sugar trees and two dead mulberries southeasterly corner to said Smith's survey No. 3230; thence with the line thereof S. 69 W. 320 poles crossing a branch at 128, one at 152 and one at 235 poles to the beginning.

Rob Thomas $\frac{3}{3}$
 John Hill $\frac{3}{3}$ 66
 John Thomas Mkr.

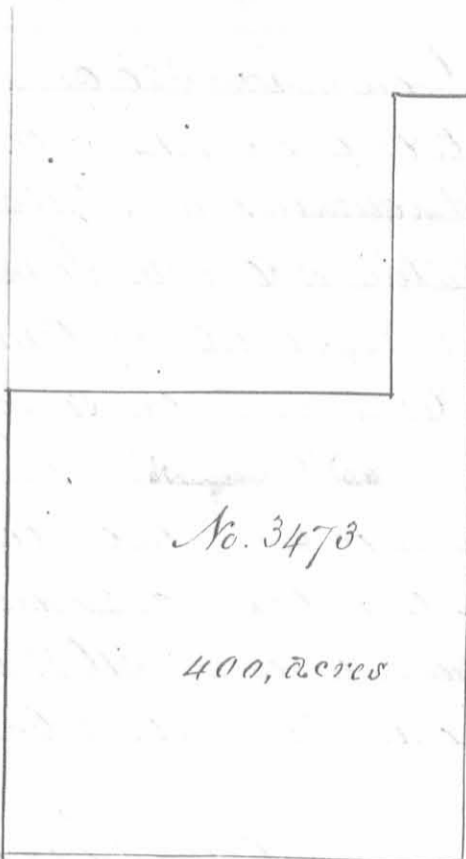
James Galloway Junr D.S.
 November 7th 1823
 December 8th 1823

Surveyed for John Gratten here 738 acres of land on part of a Military warrant No. 1495 on the waters of Darby Creek: Beginning at a red elm and two beches North west corner to Charles Simms' survey No. 158, thence N. 38 W. 390 poles crossing a branch at 96, one at 220 and one at 360 poles to two beches and a sugar tree; thence S. 52 W. 303 poles crossing Beaver run at 90 poles to two sugar trees in the north line of Robert Powers survey No. - thence S 38 E 390 poles crossing a branch at 90 poles to a sugar tree and beech, thence N. 52 E. 303 poles crossing Darby creek to the beginning.

Samuel Gamwood $\frac{3}{3}$
 Abraham Sager $\frac{3}{3}$ 66
 Henry Shover Mkr.



Lucas Sullivant D.S.
 May 21st 1816
 February 13th 1818



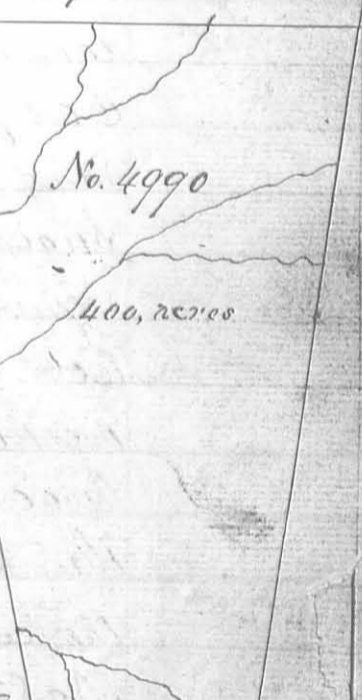
Surveyed for John Williams 400 of land on a military warrant No 1036 on the waters of Rush Creek: Beginning at a stake Northwest corner to Edwarda Stubblefield survey No 9901 and 10780, thence S 78 W 40 poles to a stake Northeast corner to Robert C Bruce survey No. 11043, thence S. 12. E 160 poles to stake with east corner to said survey, thence S 78 W 200 poles to a stake South west corner to said survey; thence S, 12. E. 240 poles to a stake in the Greenville treaty line; thence N. 78 E 240 poles to a stake Southwest corner to Stubblefield said survey, thence N. 12. W. 400 poles

to the beginning.

Peter Jones *m*
 John Lee *m*
 Charles Porter *m.k.r.*

Cadwallader Wallace D.S.
 August 15th 1831
 August 20th 1831

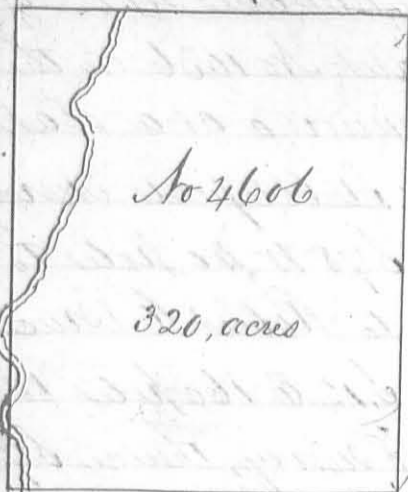
Surveyed for Samuel Wallace heir at Law to Adam Wallace deceased 400 acres of land on part of a military warrant No. 3195 on the waters of Stony creek: Beginning at a stake in the west line of Thomas Northington's survey No. 4399, 125 poles South of two lymns and a white walnut; Northwest corner to said survey; thence S 80° W, 240 poles, crossing two branches to a stake Indian line, thence with said line S. 20. E 363 poles, crossing several branches to a stake 22 poles S. 20. E. from two white oaks and a red elm marked as a corner in said line Northwest corner to Sadder's other survey No. 10114 & 10141, thence with their line N. 80. E 119 poles crossing two branches to a sugar tree and lymn northeast corner to said survey in the west line of Alexander S Dandridges survey No. 4478, thence with said line North 358 poles passing three sugar trees northwest corner to said survey at 184 poles and with the line of Northington's said survey crossing two branches to the beginning.



Martin Smith *m*
 Jacob Foster *m*
 Matthew Pomeroy *m.k.r.*

Cadwallader Wallace D.S.
 November 23rd 1819
 June 21 1825

USE THIS ONE.



Survey for John Gratton heirs 320 acres of land on part of a Military Warrant No. 1485 on the waters of Darby's Creek: Beginning, at a hickory and three beeches in the line of Charles Symmes Survey No 158, thence N 38 W 250 poles to three beeches in the line of Levi Hollingworth's Survey; thence with the line of said Hollingworth's Survey S. 52 W. 205 poles and 10 links to a stake near a water beech, thence S 38 E 250 poles to a box elder, Buckeye and elm in the line of Richard Stephenson's Survey No 3163, thence with said Stephenson's line N. 52. E. passing his corner 205 poles 10 links to the beginning.

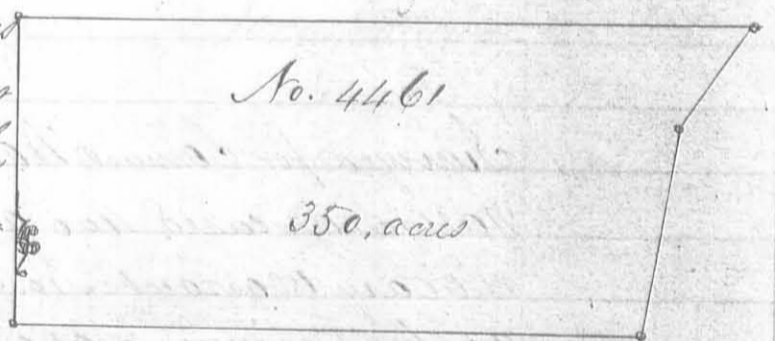
Joseph Garwood 3
Benjamin Vickers 3 1/2
Signed Starting M.k.r.

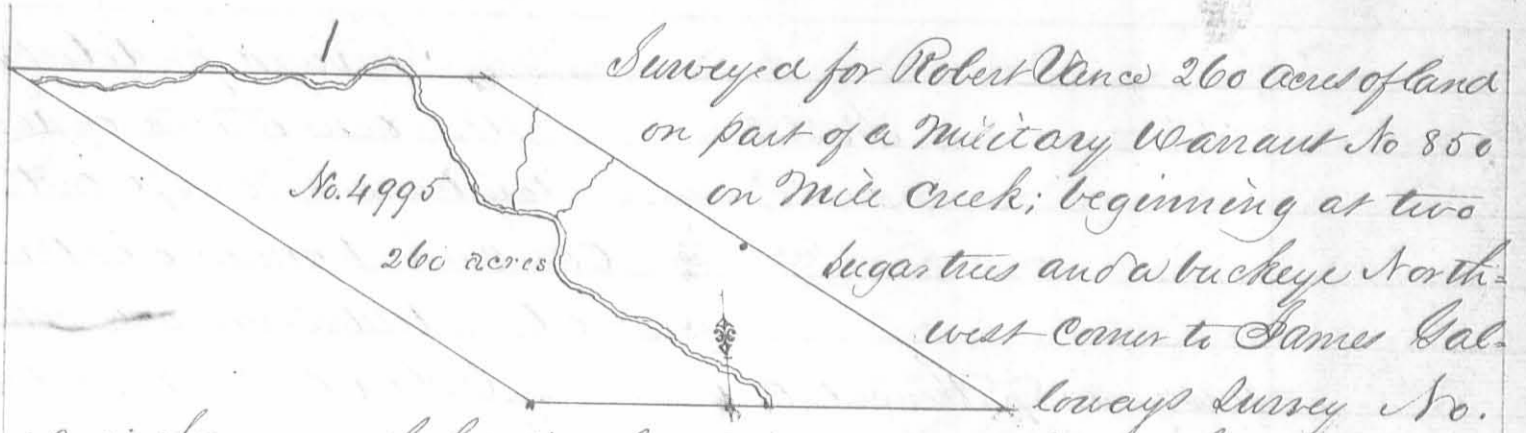
Allen Satham D.S.
October 19th 1825
Nov. 15th 1825

Survey for John Tibbs 350 acres of land on part of a Military Warrant No. 4946 on the waters of the East fork of the Miami: Beginning at two white oaks, elm & Sugar tree in the line of Samuel Hawes Survey No 2791, thence East 326 poles passing the Northwest corner of Robert Sayre's Survey No. 4163 and with his line to three Sugar trees and a hickory in said line; thence N. 10. E. 110 poles to three hickories, thence N 35 E 65 poles to two maples & a hickory thence West 385 poles to a stake in the line of Thomas Dick's Survey No 876; thence with said line & the line of said Hawes Survey South 160 poles to the beginning.

William Vanmetre 3
William McQuinty 3 1/2
P. A. White M.k.r.

James Taylor D.S.
March 20. 1824
November 16. 1824





Surveyed for Robert Vance 260 acres of land on part of a Military Warrant No 850 on Mill Creek; beginning at two sugar trees and a buckeye North-west corner to James Gallows Survey No.

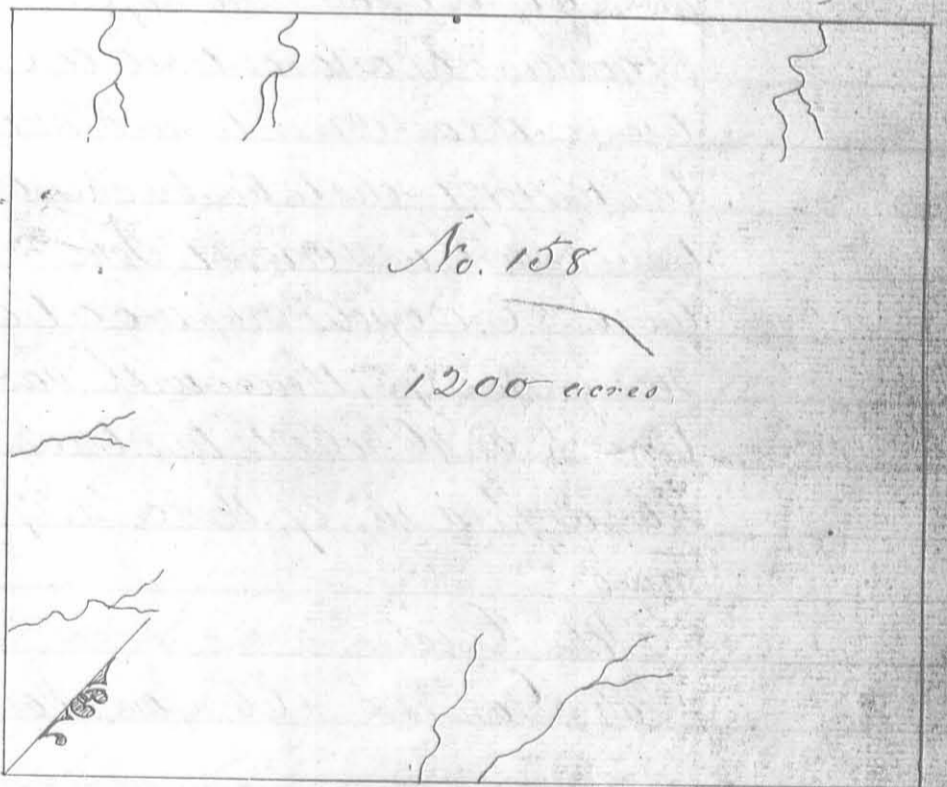
4813; thence with his line S 83 E. 144 poles crossing the creek to an elm, Ironwood and white oak corner to survey No 5092, thence binding on said survey N. 57 W. 320 poles crossing two branches to a beech and sugar tree; thence N. 83 W. 250 poles crossing the creek several times and passing a corner of No 5092 at 113 to a stake; thence S. 57 E. 320 poles crossing the creek & a branch to a sugar tree; thence S. 83 E. 106 poles to the beginning.

David Sharp
William Henry C.C.
Joseph Haynes M.k.

Allen Satham S
Feb 7th 8th 1830
Feb 11. 1830

106
379
150

Surveyed for Charles Simms 1200 acres of land on part of a Military Warrant No 351 on the waters of Darlys Creek. Beginning at a beech and sugar tree westerly corner to James Coleman & others survey No 3749, thence N 37 W 400 poles crossing a branch at 80 and one at 168 poles to three beeches and a hickory, thence N. 53 E. 480 poles, crossing a branch at 52 and one at 428 poles to five lymus pine one root, thence S 37 E. 400 poles to an ash elm and hickory in the line of William Carters survey No 3137, thence with his line and course thereof S. 53, W. 480 poles crossing a branch at 232 and one. at 272 poles to the beginning.



Samuel Warner C.C.
David Warner C.C.
Ashua McMaide M.k.

James Gallaway S. D.C.
December 3rd 1823
April 6th 1824

Note. Most if not all of this Survey is in Union County now, though some part was originally taxed in Logan

Surveyed for Robert Means a part of 133 1/2 acres of land on part of a military warrant No 5470 on the waters of Otter Creek; beginning at three Iron woods and a beech westerly corner of John Bairds survey No. 5875, thence with his line N. 25. E. 160 poles crossing a branch at 90 poles to two beeches and a sugar tree northerly corner to said survey, thence N. 17 W. 36 poles to two beeches a sugar tree and large white oak southeasterly corner to said Means survey No. 5091, thence with said line west 420 poles to two hickories and a lynn southwesterly corner to said survey and southeasterly corner to Thomas Notts survey No. 2674, thence S. 66. E. 335 poles to the beginning.

James Hatcher
 Levi Garwood
 John Mearns Mkr.

Duncan McArthur D.S.
 June 15th 1822
 September 27th 1822

Surveyed for Robert Means a part of 54 1/2 acres of land on part of a military warrant No 3470 on the waters of Otter Creek. Beginning as a large white oak two beeches and a sugar tree southeast corner to said Means survey No. 5091, thence with his line west 171 poles to two beeches and a sugar tree on the north side of a branch, northwest corner to John McDonalds survey No. 5888, thence with his line S. 28. E. 120 poles crossing a branch to a stake in the line of John Bairds survey No 5875, thence with said line N. 52. E. 132 poles crossing a branch at 46 poles to two beeches and a sugar tree northerly corner to Bairds said survey; thence N. 27. E. 26 poles crossing a branch to the beginning.

John Hatcher
 John Garwood
 James Hatcher Mkr.

Duncan McArthur D.S.
 November 18th 1822
 February 13th 1823

Surveyed for Robert Marshall 100 acres of land on a military warrant No. 1763 on the waters of Darby creek; beginning at two sugar trees and a beech westerly corner to Michael Murphy's survey No 5275 in the line of Benjamin Bojpeaus survey No. 484, thence with Murphy's line N. 53 E. 200 poles to two beeches and a lynn, thence S. 52. W. 200 poles to an ash and beech in the line of Bojpeaus said survey, thence with his line S. 38. E. 80 poles to the beginning.

Samuel Warner
 David Warner
 Joshua M. Mide Mkr.

James Garvey Jr D.S.
 November 28th 1823
 April 6th 1824

No. 5275
100, acres

Surveyed for Anthony Garrett 100 acres of land on a Military warrant No. 3562 on the waters of Darby Creek; beginning at an ash and beech in the line of Benjamin Boipeaus survey No. 4811 westerly corner to Robert Marshall survey No. 5275, thence with Marshall line N. 52 E. 200 poles to a white oak ash and lynn northerly corner to his survey; thence N. 38 W. 80 poles to two sugar trees and a lynn; thence S. 52. W. 200 poles to a black oak ash and maple in Boipeaus line; thence with said line S. 38. E. 80 poles to the beginning.

Samuel Warner
David Warner
Joshua McNaide M.k.r.

James Galloway Jr. D.S.
November 28th 1823
April 6th 1824

Surveyed for Michael Murphy 200 acres of land on a Military warrant No. 1152 on the waters of Darby Creek: Beginning at a sugar tree easterly corner to Benjamin Boipeaus survey No. 4811; thence with his line N. 38. W. 160 poles to two sugar trees and a beech; thence N. 52. E. 200 poles to two beeches and two sugar trees; thence S. 38. E. 160 poles to two beeches and an ash; thence S. 52. W. 200 poles to the beginning.

Samuel Warner
David Warner
Joshua McNaide M.k.r.

James Galloway Jr. D.S.
November 28th 1823
April 6th 1824

No. 5275
100, acres

Surveyed for John Surdau 100 acres of land on a Military warrant No. 1867 on the waters of Darby Creek: Beginning at a black oak ash and maple westerly corner to Anthony Garrett survey No. 5275 in the line of Benjamin Boipeaus survey No. 4811, thence with said line, N. 38 W. 80 poles to a buck-eye, white oak and hickory northerly corner to said survey in the line of Richard Calks survey No. 4816, thence with said line N. 52. E. 200 poles to two hickories and an ash in said line; thence S. 38 E. 80 poles to two sugar trees and a lynn northerly corner to said Garrett survey, thence with his line S. 52 W. 200 poles to the beginning.

Samuel Warner
David Warner
Joshua McNaide M.k.r.

James Galloway Jr. D.S.
November 28th 1823
April 6th 1824

No. 5042
270, acres

Surveyed for James Denny *ap^{te}*, Samuel Finley and Pypa Hewitt *ap^{te}* 270 acres of land on part of three military warrants in the following proportion viz: Denny 100 acres on warrant No. 3661. Finley 65 acres on warrant No. 1450 and Hewitt 105 acres on warrant No. 205 on the waters of Mead river. Beginning at two hickories and an elm north east corner to Richard Osborns survey No. 4520, and in the line of Augustine S Smiths survey No. 3229 running N. 21 W. 140 poles to a hickory, red oak and ash; thence S. 69, W. 308 1/2 poles to a forked Cherry tree and black oak; thence S. 21. E. 140 poles to two burr oaks and a hickory, thence N. 69, E. 308 1/2 poles to the beginning.

John Thomas *3*
James Thomas *3* C. C. m. k. r.

James Denny D. S.
August 30th 1806
September 2^d 1806

Surveyed for Pypa Hewitt *ap^{te}* 125 acres of land on part of a Military warrant No. 205 on the waters of Mead river. Beginning at a forked cherry and black oak north westerly corner to James Denny, Samuel Finley and Pypa Hewitts survey No. 5042, running S. 70, W. 87 poles to a hickory and burr oak; thence S. 28, W. 85 poles to two hickories, thence S. 21, E. 85 poles to a burr oak and hickory, thence N. 70, E. 153 poles to two hickories and a burr oak thence N. 21, W. 144 poles to the beginning.

No. 5044
125, acres

John Thomas *3*
James Thomas *3* C. C. m. k. r.

James Denny D. S.
August 30th 1806
September 3^d 1806

No. 5045
100, acres

Surveyed for Pypa Hewitt *ap^{te}* 100 acres of land on part of a Military warrant No. 205 on the waters of the big miami; beginning at a black oak and white oak southwest corner to Nezekiah Nortons survey No. 4498, running north 254 poles crossing a branch at 188 poles to two black oaks; thence West 110 poles to two black oaks in Sudears line, thence with the same S 20 E. 269 poles crossing a branch at 202 poles to a black oak and hickory, thence East 17 poles to the beginning.

Solomon McCulloch *3*
John Ward *3* C. C. m. k. r.

James Denny D. S.
August 30th 1806
September 3^d 1806

No. 5057

50 acres

Surveyed for William Tidball app^x 50 acres of land on part of a military warrant No. 3707 on the waters of Mad river; beginning at an elm hickory and red oak, northwest corner to Samuel Finley James Denny and John Barretts survey No 4958, running S. 69. W 25 1/2 poles to a white oak, ash and hickory southwest corner to Augustine Smiths survey No. 3229 and in the line of Richard Osborns survey No. 4520, thence with Osborns line S. 21. E. 310 poles, to a small burr oak in a barn, thence N. 69 E 25 1/4 poles to a stake corner to said Finley, Denny and Barretts survey; thence N 21 W 310 poles to the beginning.

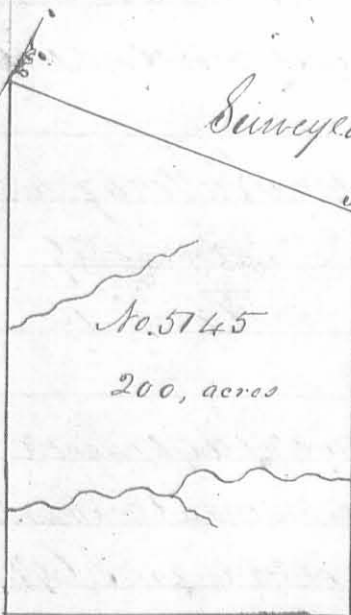
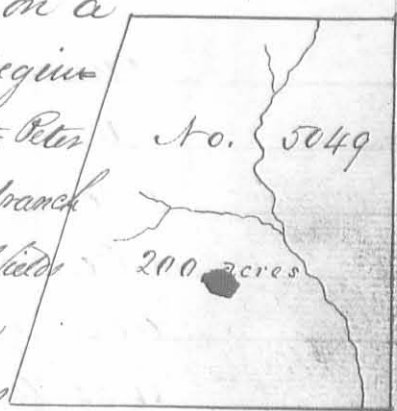
Benjamin Newitt
Jacob Johnston 3 l.c. & m.k.v

James Denny D.S.
October 23rd 1806
October 25th 1806

Surveyed for John McKinney app^x 200 acres of land on a Military Warrant No 4443 on the waters of Darby Creek; beginning at a hickory Elm and sugar tree westerly corner to Peter Pelhams survey No. 4697 running S. 52. W. 136 poles crossing a branch at 44 poles to three sugar trees in the line of Benjamin Stubblefield survey No. 3231, thence with his line S. 21. E. 208 poles to an elm and hickory; thence N. 52. E. 196 poles to two hickories and an elm in the line of said Pelhams survey, thence with Pelhams line N. 38 W. 200 poles to the beginning.

Alexander Kerr
James Stevens 3 l.c.
Joseph Sharp m.k.v

James Gallaway Jun^r D.S.
January 22nd 1807
January 27th 1807



Surveyed for Robert Means app^x 200 acres of land on a military warrant No 5720 on the waters of Mad river. Beginning at three hickories and a white oak, southwest corner to John Campbells survey No 2574 in Saddlows line, running with said line S 20 E 220 poles crossing two branches to three white oaks in said line, thence N. 70. E. 180 poles to a hickory and black oak; thence N 20 W 205 poles to two black oaks; thence west 193 poles to the beginning.

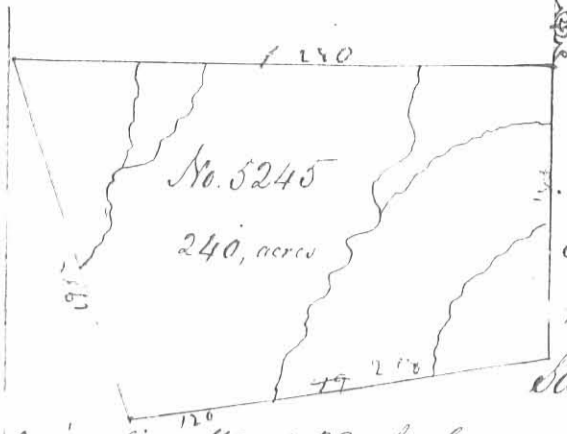
George Irons
Richard Baldoch 3 l.c.

Henry Sturms m.k.v.

James Gallaway Jun^r D.S.
January 22nd 1807
January 27th 1807

Note - This survey was copied by mistake. It is not in Logan County but in Champlain Co.

H.B.

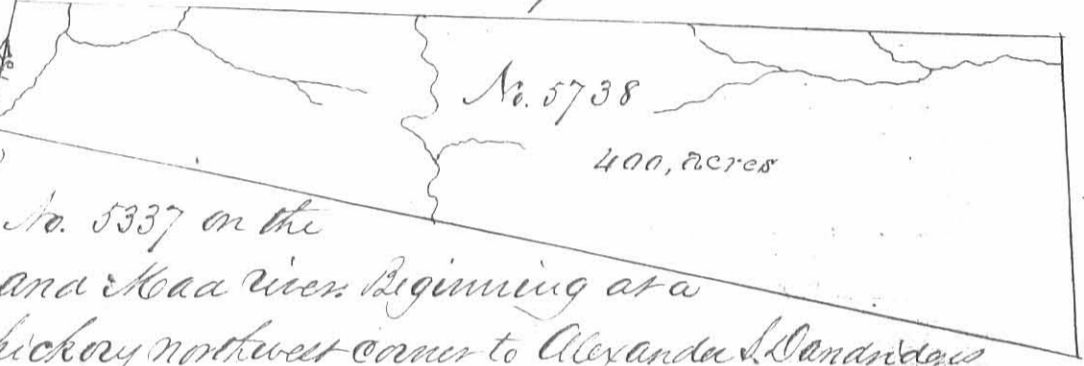


Surveyed for William Baylor 240 acres of land on part of a military Warrant No. 829 on the waters of Stony Creek: Beginning two cypresses and white walnut Northwest corner to Thomas Northingtons survey No. 4399 in the line of Samuel Wallaces survey No. 2873 running with said line West 280 poles crossing several branches to two bur oaks westerly corner to said Wallaces survey in Sudlows line, thence with said line S. 20. E. 196 poles crossing a branch to a stake; thence N. 80. E. 218 poles crossing a branch to a beech in said Northingtons line; thence with his line N. 148 poles crossing two branches to the beginning.

Colin McCollum
John McCollum
Samuel McCollum Mkr.

Duncan McArthur D.S.
March 31st 1807
April 22. 1807

Surveyed for Charles Spencer a lot 400 acres of land on part of a



Military Warrant No. 5337 on the waters of Big Miami and Mad rivers: Beginning at a sugar tree beech and hickory northwest corner to Alexander Sandridges survey No. 3220. and Southeast corner to Thomas Northingtons survey No. 4399 running with Northingtons line North 66 poles crossing a small branch to three white oaks in the line of Robert Perces survey No. 3683; thence with Perces line and course thence of N. 30 E 544 poles crossing a branch at 28, one at 88, one at 208 one at 356 and one at 446 poles to three sugar trees and a white walnut; thence S. 16. E 168 poles crossing a large branch of Mad river at 10 poles to two cypresses one root and an ash; thence West 578 poles passing Sandridges northeast corner and with his line crossing several branches to the beginning.

John Stearns
Moses Collier
Samuel Galloway Mkr.

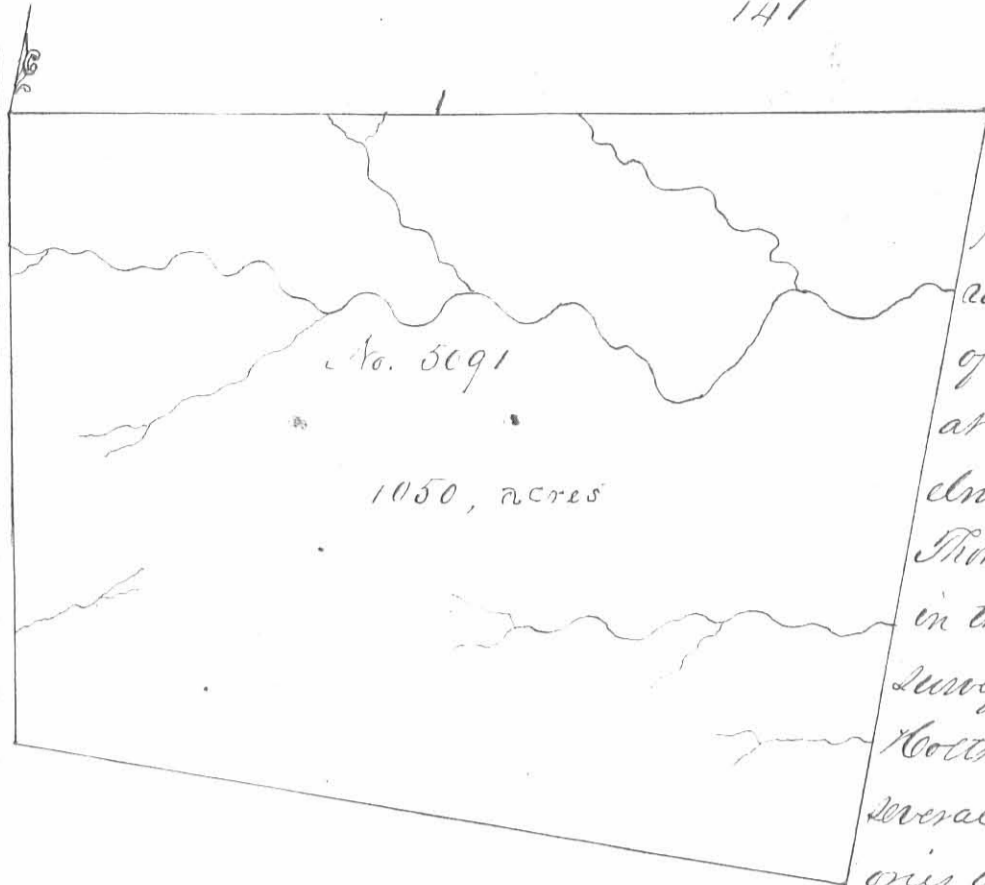
Samuel Galloway Junr D.S.
February 29th 1808
March 19th 1808

No. 5812
80 acres

Surveyed for Benjamin Boifreau 80 acres of land on part of a military Warrant No. 5181 on the waters of Mad river; beginning at two sugar trees and a beech near northwesterly corner to said Boifreau's survey No. 4676 running with his line S. 69 W. 192 poles to two sugar trees and a hickory in said line; thence N. 11 W. 120 poles to two beeches and an ash; thence East 100 poles to a large beech; thence S. 65. E. 112 poles to the beginning.

William Forsythe
William Forsythe
Samuel Galloway Mkr.

Samuel Galloway Junr D.S.
June 15th 1808
June 27th 1808



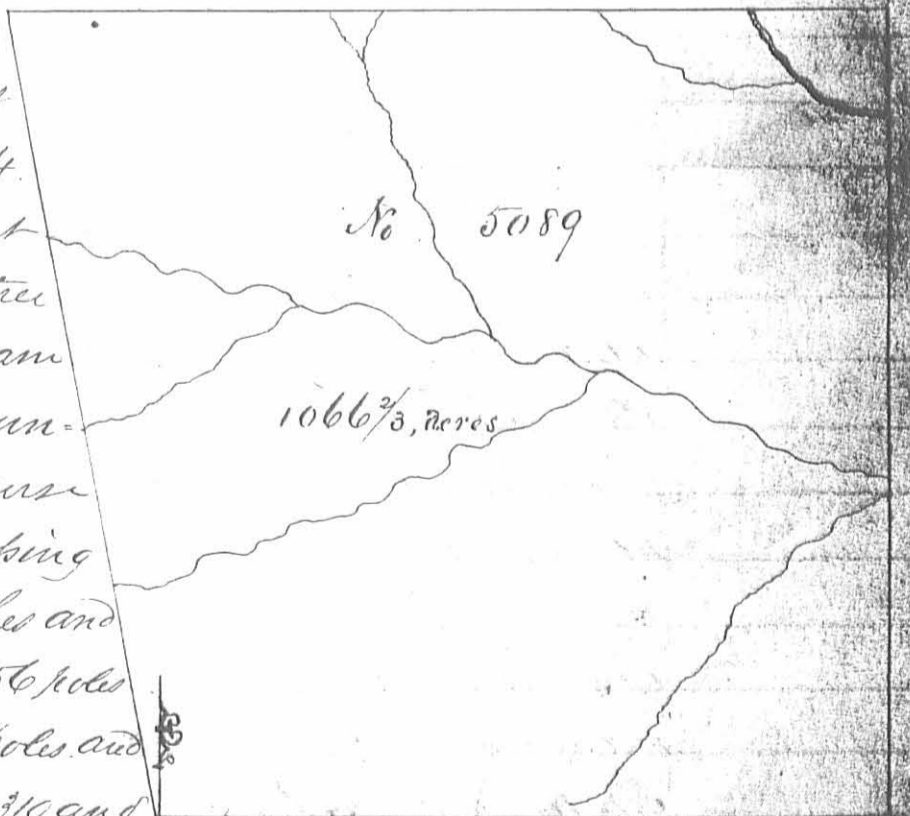
Surveyed for Robert Means
 ap^{pr} 1050 acres of land on
 part of a Military War-
 rant No 5109 on the waters
 of Mill Creek: Beginning
 at a large Black Walnut and
 elm northwesterly corner to
 Thomas Holt's survey No. 2674
 in the line of William Cochran's
 survey No 3436 running with
 Holt's line S 20 E. 325 poles crossing
 several small branches to two hick-
 oris and a lynn southeasterly

corner to said Holt's survey; thence East 440 poles to two beeches, a sugar tree and
 large white oak, thence North 408 poles, crossing a branch at 75 and at 136
 and one at 314 poles to a hickory ash and lynn; thence S. 80 W. 507 poles crossing
 several branches and passing the southeasterly corner of said Cochran's sur-
 vey and with his line to the beginning.

Colin McCollum ³
 James McAnan ³ C.C.
 John McDonald M.R.

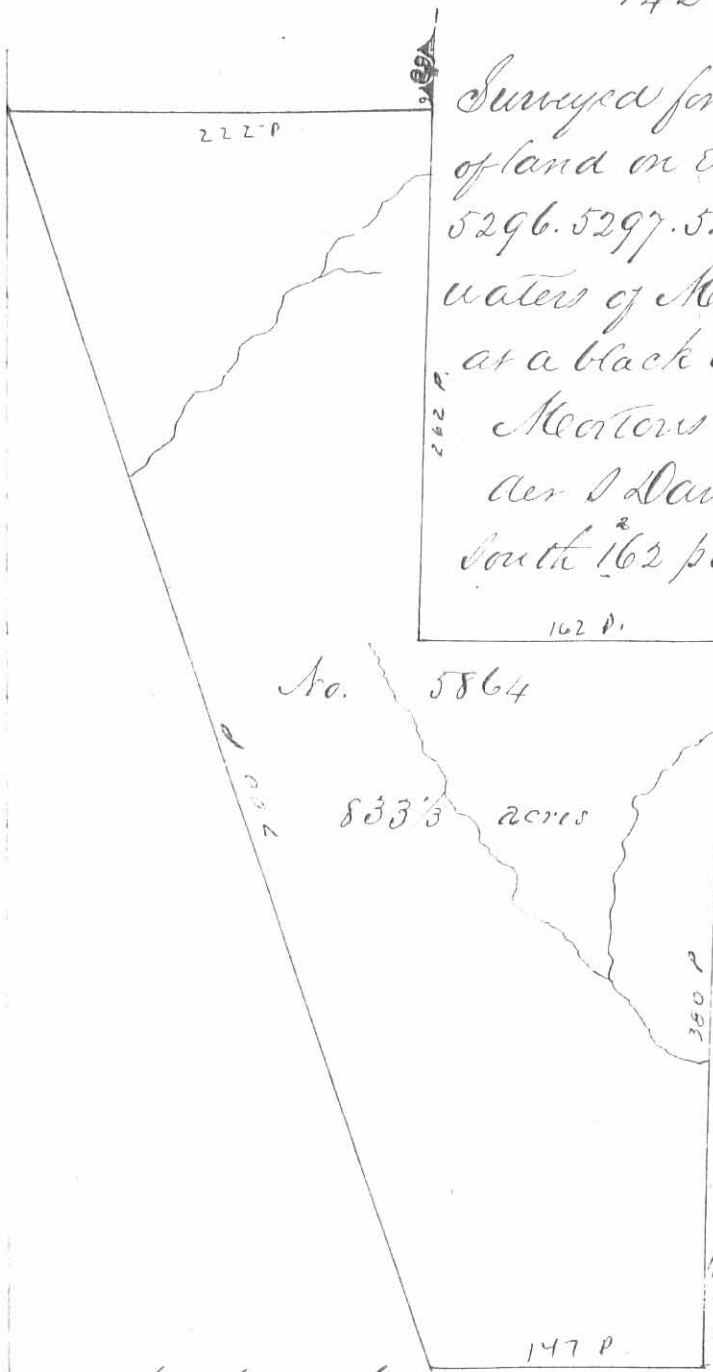
Duncan McArthur D.S.
 February 15th 1807
 April 24th 1807

Surveyed for John McDonald
 ap^{pr} 1066²/₃ acres of land on part
 of a military Warrant No. 4784
 on Mill Creek: Beginning at
 a bur oak ash and a sugar tree
 southeasterly corner to William
 Cochran's survey No. 3436 run-
 ning with his line and course
 thence N. 10 W. 444 poles crossing
 several branches to two beeches and
 a sugar tree; thence East 456 poles
 crossing a branch at 164 poles and
 one at 193 poles and one at 310 and
 Mill Creek at 390 poles to a sugar tree, beech and hickory; thence
 South 418 poles passing the northwest corner of Strother Jones survey
 No 4210, at 18 crossing the creek at 56, a branch at 242 and one at 252 poles to a
 hickory ash and lynn southeasterly corner to Jones survey, thence S. 87 W. 378 poles to the beginning.



David Sharp ³
 William Henry ³ C.C.
 Joseph Maynes M.R.

Duncan McArthur D.S.
 November 24th 1807
 December 27th 1807



Surveyed for Thomas M. Bailey a piece of 833 1/3 acres of land on eight Military warrants No. 5295 5296 5297 5298 5312 5313 5314 and 5322 on the waters of Koad river, and big Miami; beginning at a black oak southeast corner to Nezekiah Meenters survey No 4498 in the line of Alexander S. Canardges survey No 4477 running South 162 poles crossing a branch to two hickories and a black oak south west

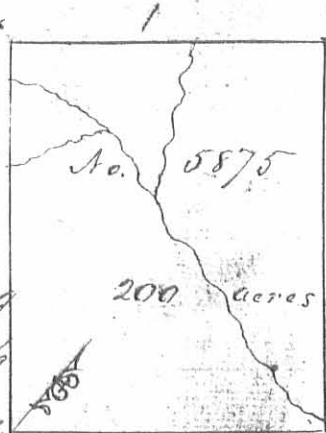
corner to said Canardges survey thence with another of his lines East 162 poles to two sugar trees and a red oak in said line; thence South 380 poles crossing a branch at 46 and one at 220 poles to three black oaks; thence West 147 poles to two hickories in the line run by Israel Sudaon between the United States and the Military lands; thence with said line N. 20 W 700 poles crossing a branch to

a black oak and hickory in said line and southwest corner to Byrd Bewitt survey No. 5045; thence with his line passing his corner and with the line of said Meenters survey East 222 poles to the beginning.

Richard Balouch 3
George Srouf 3
Samuel Galloway M.k.r.

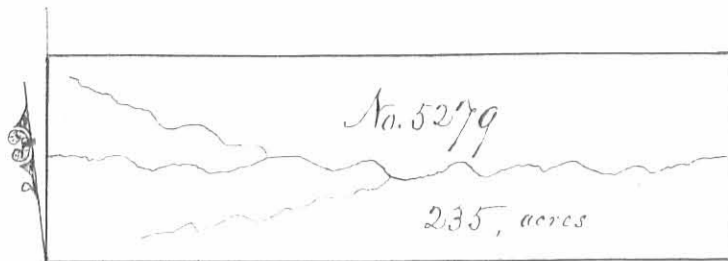
James Galloway Sur. G.S.
June 2nd 1808
June 17th 1808

Surveyed for John Baird a piece of 200 acres of land on part of a Military warrant No. 546 on the waters of Otter creek: Beginning at two beeches and an ash westerly corner to William Croghans survey No. 4689 in the line of the representative of Sewelling Jones survey No 4655 running with Jones line and course thereof N. 38 W 200 poles crossing a branch at 140 poles and one at 180 poles to three Ironwoods and a beech; thence N. 52 E. 160 poles crossing a branch at 90 poles to two beeches and a sugar tree west corner to Richard Call survey No. 4810; thence with his line S. 38 E. 200 poles crossing a branch at 196 poles to two blue ashes and a hickory corner to said Call's survey in the line of said Croghans survey; thence with his line S. 52 W. 160 poles to the beginning.



Miriam Gilson 3
Henry Sturms 3
John P. P. M.k.r.

James Galloway Sur. G.S.
May 22nd 1808 (1810)
June 27th 1808 (1810)



Surveyed for David Bradford of
235 acres of land on a Military War-
rant No 890 and 35 acres on part of
No. 1121 on a branch of the south fork

of Dentys creek which heads in or near the south corner of George Meadows
survey No 1118; beginning at three small bur oaks, southeasterly corner
to said Bradfords entry No. 5276 and southeasterly corner to said Brad-
fords survey No. 5276, 5277, 5278 running with the lower line of said
entry N. 4. E 108 poles crossing the branch at 54 poles to three white
oaks on the east corner to said entry; thence S. 80. E. 250 poles to two
large white oaks and a hickory; thence S. 4. W. 108 poles crossing the
branch at 54 poles to three bur oaks, thence up on the south side of
the branch with the barons N. 86. W. 350 poles to the beginning.

Daniel Matthews 3
James Matthews 3 66
James Minery, M.h.r.

Duncan McArthur D.S

November 12th 1811

April 13, 1812

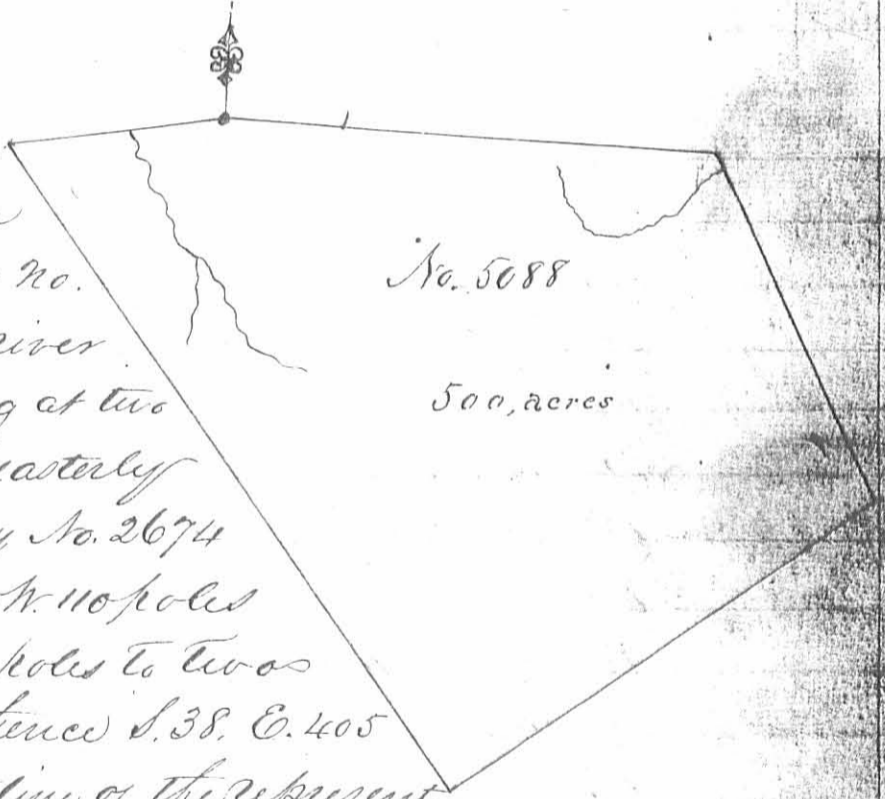
Surveyed for John McDon-
ald of 500 acres of land on
part of a Military Warrant No.
4784 on the waters of Mead river
and Mill creek; beginning at two
hickories and a lynn southeasterly
corner to Thomas Hoets survey No. 2674
running with his line S. 80 N. 110 poles
crossing a branch at 58 poles to two
hickories and a beech; thence S. 38. E. 405
poles to a sugar tree in the line of the represent-
ative of Sewelling Jones survey No. 4653, thence with said line
N. 52. E. 265 poles to a sugar tree, ash and Ironwood, northerly cor-
ner to said Representative's survey; thence N. 28. W. 200 poles to two
beeches and a sugar tree on the north side of a branch in the line
of Robert Moans survey No. 5091; thence with his line west 250
poles to the beginning.

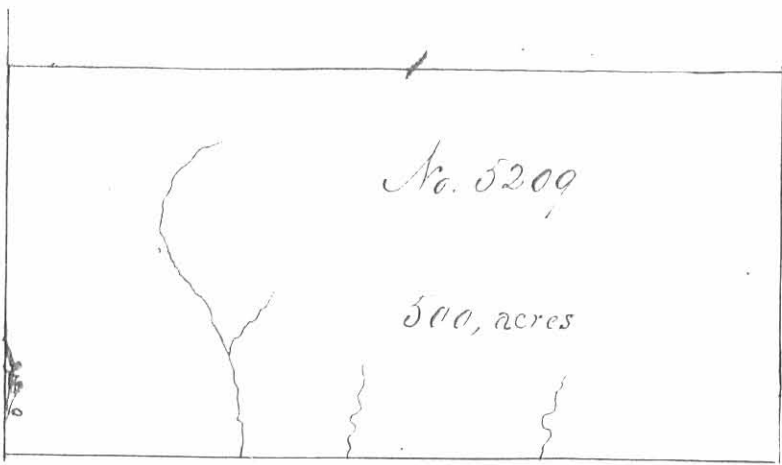
Isaac Zane 3
William Henry 3
Stuart Hatfield M.h.r.

Duncan McArthur D.S

November 28th 1808

December 27th 1808





Surveyed for Benjamin Biggs
500 acres of land on east of a mili-
tary warrant No. 225 on the waters
of Mill creek: Beginning at an
ash hickory and buckeye Northwest
corner to Brother Jones survey No 4210
running north 200 poles to an ash

beech and sugar trees, thence East 400 poles to three beeches; thence South
200 poles to two beeches and two sugar trees Northeast corner to said Jones
survey; thence with his line West 400 poles to the beginning.

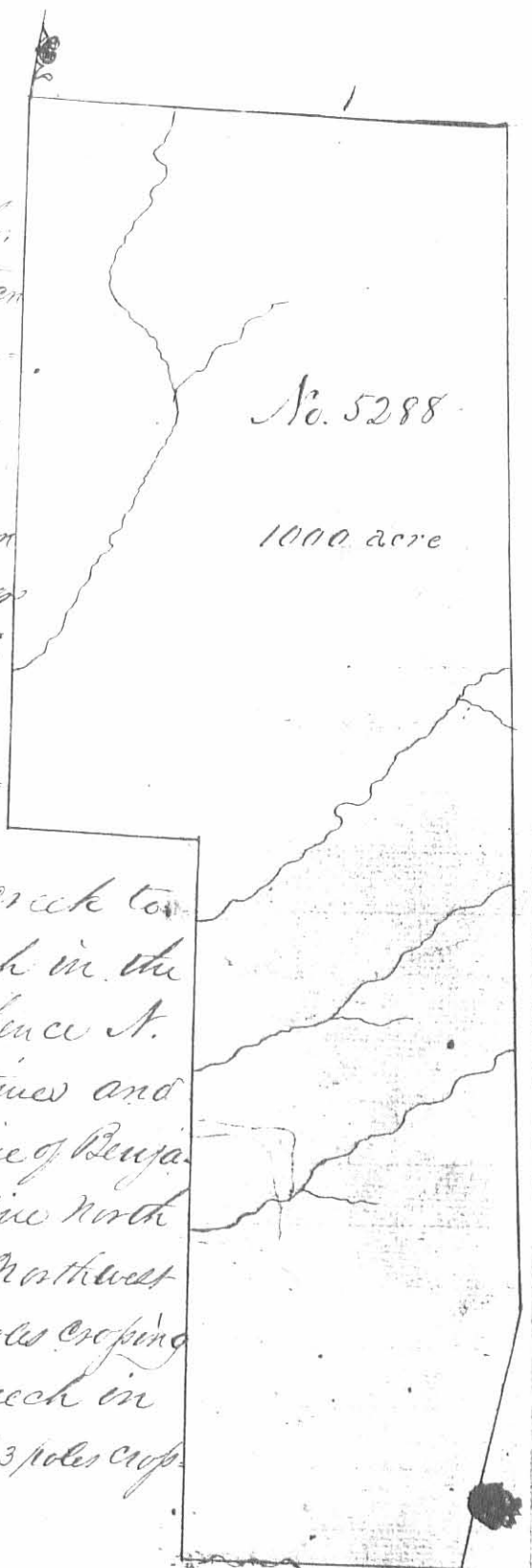
Daniel Sharp
William Henry C.C.
Joseph Hayes M.K.S.

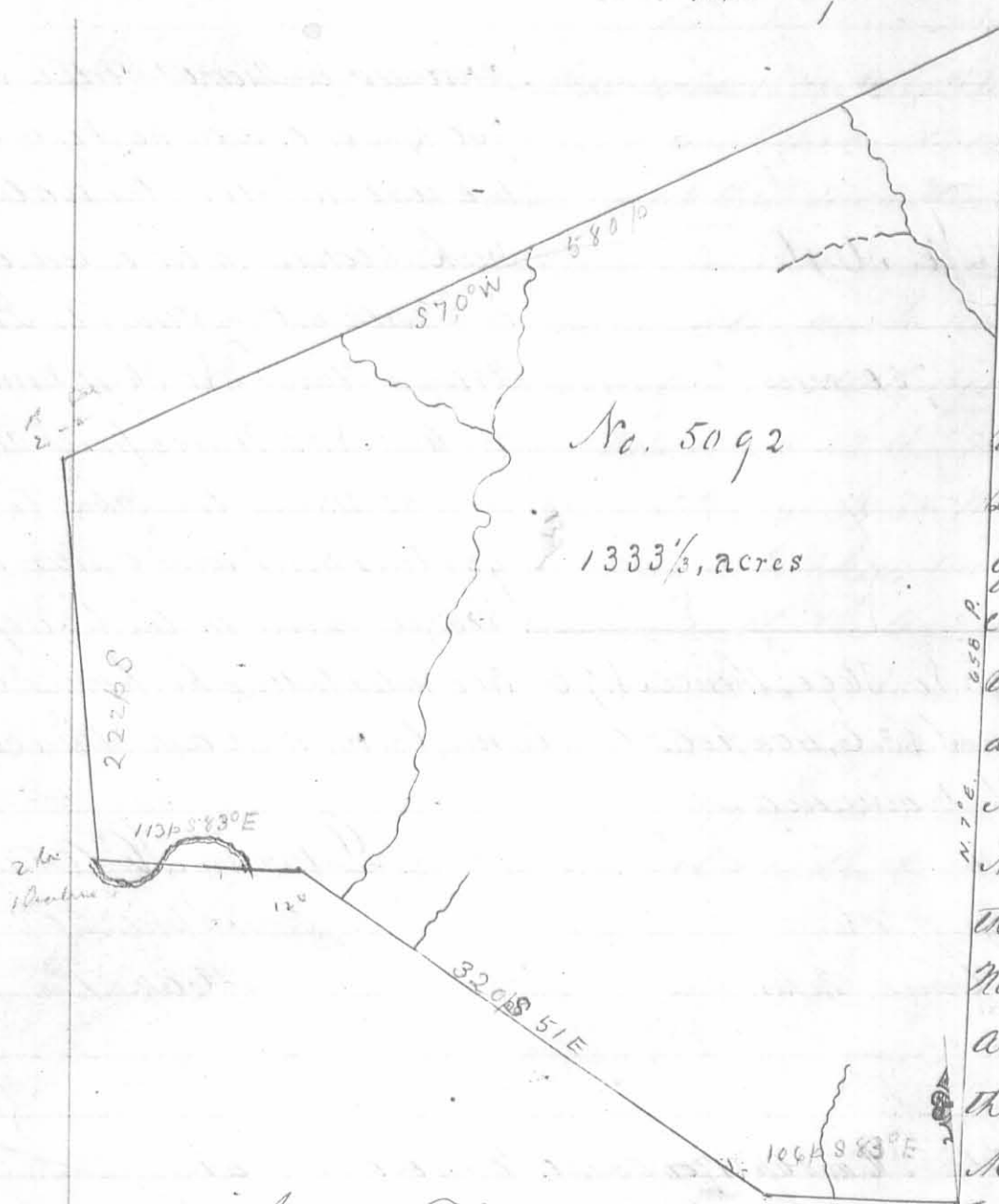
Lincoln M. Arthur D.S.
November 23rd 1808
May 11th 1809

Surveyed for Thomas Boynton 1000 acre of land on
part of a military warrant No 19 on Mill creek.
beginning at two hickories two sugar trees and an
ironwood north easterly corner to Charles Ham-
phrey's survey No 3472 running with his line
S 10 E. 400 poles to a white walnut beech and
sugar tree southeasterly corner to said Ham-
phrey's survey in the line of Daniel Pedingers
survey No 842; thence with his line N. 50 E
105 poles to a sugar tree and two large
ashes northeast corner to said Pedingers sur-
vey; thence with another of his lines S. 10. E
395 poles crossing several branches of Mill creek to
three hickories on the north side of a branch in the
line of John McDonald's survey No. 5089, thence N.
83. E. 153 poles crossing a branch several times and
the creek at 92 poles to three beeches in the line of Benja-
min Biggs survey No. 5209, thence with his line North
154 poles to an ash beech and two sugar trees Northwest
corner to said Biggs survey; thence N. 13. W. 640 poles crossing
several branches to a buckeye sugar tree and beech in
the Indian Boundary line; thence with said line S. 80. W. 263 poles cross-
ing a branch to the beginning.

Isaac Zane
William Henry C.C.
Stewart Hatfield M.K.S.

Lincoln M. Arthur D.S.
November 23rd 1808
May 11th 1809





Surveyed for Robert Means
 of 1333 1/3 acres of land on
 a military warrant No 5110
 on Mill creek. Beginning
 at two buckeyes an ash
 and lym Northwesterly cor-
 ner to James Gallaway Junr
 survey No. 4813 in the line
 of the representatives of Sea-
 welling Jones survey No. 4815
 running with said line
 and with the line of Peter
 Manifold survey No. 2832
 N. 7 E. 658 poles passing
 the Northwest corner of survey
 No 4815 at 238 poles crossing
 a branch at 480 and passing
 the Northwest corner of said
 Manifold and Southwest
 corner of Andrew Tortous survey No. 2982 at 638 poles to three sugar trees and
 a beech in the line of said Tortous survey; thence S. 70 W. 580 poles crossing
 several branches to two buckes and two sugar trees North East corner
 to Strother Jones survey No 4210, thence with his line South 222
 poles to two buckeyes and a Hackberry near the creek in the line of
 Robert Vances survey No. 4095; thence with his line S. 83 E. 113 poles
 crossing mill creek twice to a beech and sugar tree; thence S. 57 E. 320
 poles crossing a branch at 28 and on at 75 poles to an elm, sycamore
 and white oak in the line of said Gallaways survey; thence with
 said line S. 83 E. 106 poles crossing a branch at 37 poles to the beginning

David Sharp
 William Henry
 Joseph Haynes M.k.r.

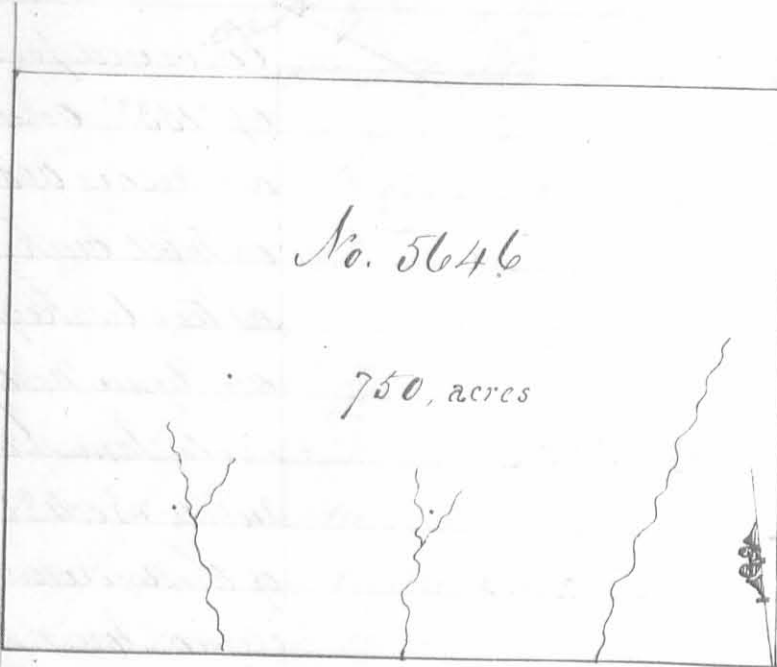
Duncan McArthur D.S.
 November 26th 1808
 May 12th 1809

Surveyed for Walter Dumas of 50 acres of land on part of a military warrant No.
 5347 on the waters of Mad river. Beginning at two red oaks and two hickories
 westerly corner to James Conroy survey No. 4957, thence S 60 W 100 poles to a white
 oak and red oak, thence S. 30 E. 80 poles to a black oak white oak and
 stake, thence N. 60 E. 100 poles to three white oaks in the line of said Conroy
 survey; thence with said line N. 30 W. 80 poles to the beginning.

No. 674
 50 acres

John John
 Jonathan Piper
 George D Roberts M.k.r.

Wm Dyer D.S.
 August 29th
 September 18th



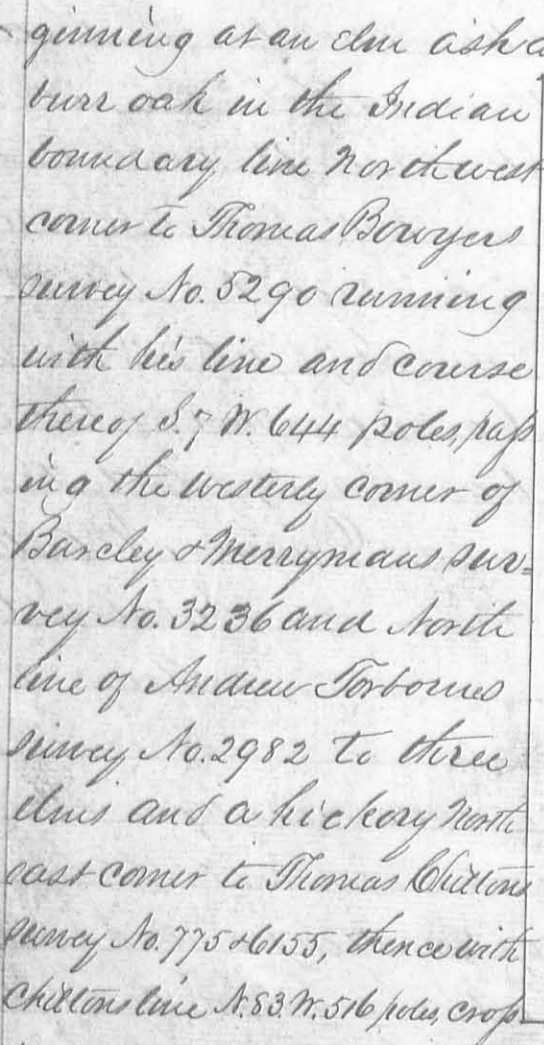
Surveyed for Thomas Worthington Apr¹
 750 acres of land on part of a Military
 warrant No. 2211 on the waters of Coker
 Creek: Beginning at a red oak, white
 oak northeasterly corner to Fafony
 Frazer survey No 3691 running with
 his line N. 83. W 400 poles crossing
 several small branches to two su-
 gar trees northwest corner to said
 Frazer survey in the line of said

Frazer survey No. 3690; thence N. 7. E. 300 poles to two hickories and a
 lynn; thence S. 83. E. 400 poles to a lynn, beech and ash; thence S. 7. W.
 300 poles to the beginning.

David Sharp
 Samuel Sharp
 James Monroe M.k.r.

Duncan McArthur D.S.
 April 20th 1808
 May 12th 1809

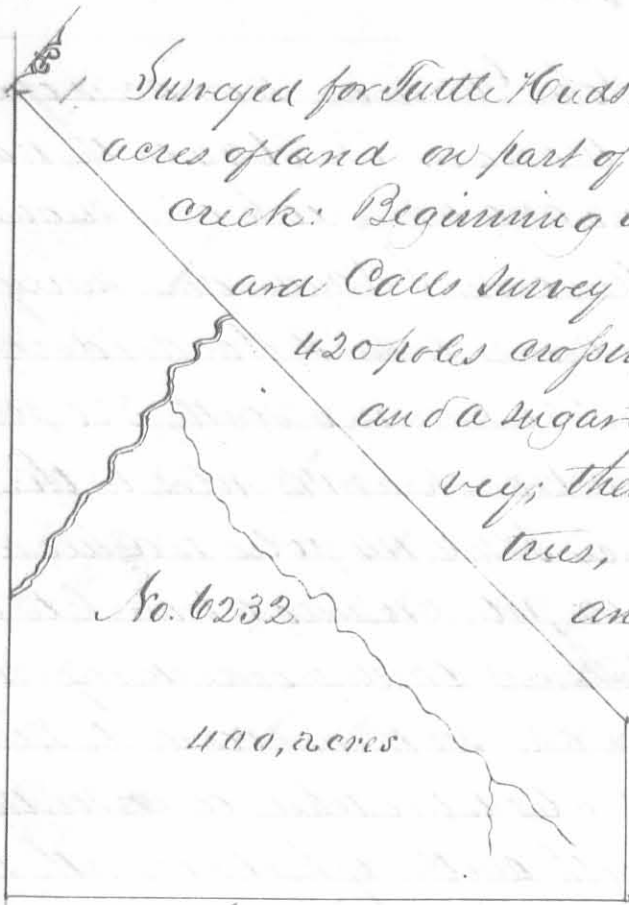
Surveyed for Robert Means Apr¹ 1700 acres of land on a military
 warrant No. 5478 and 1500 acres on part of No. 5387
 between Miller Creek and Coker Creek: Be-



ginning at an elm ash and
 burr oak in the Indian
 boundary line northwest
 corner to Thomas Bowyer
 survey No. 5290 running
 with his line and course
 thereof S. 7. W. 644 poles pass-
 ing the westerly corner of
 Barclay & Merryman's sur-
 vey No. 3236 and North
 line of Andrew Fortson's
 survey No. 2982 to three
 elms and a hickory north-
 east corner to Thomas Chilton's
 survey No. 775 & 6155, thence with
 Chilton's line N. 83. W. 516 poles, cross-
 ing several small branches to two birches an elm and sugar tree; thence N. 7. E. 486 poles to a stake in the In-
 dian boundary line, thence with said boundary line N. 80. E. 542 poles to the beginning.

David Sharp
 William Henry
 Joseph Maynes M.k.r.

Duncan McArthur D.S.
 March 20th 1809
 May 12th 1809

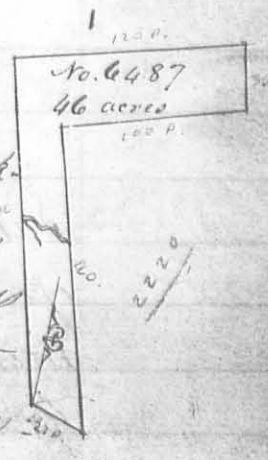


Surveyed for Little Hudson devise to of William Hudson decd. 400 acres of land on part of a Military warrant No 5264 on Otter creek: Beginning at three sugar trees northerly corner to Rich- and Calls survey No. 4810 running with his line S. 38. E. 420 poles crossing the creek at 260 poles to two ashes and a sugar tree easterly corner to said Calls sur- vey; thence N. 52 E. 320 poles to three sugar trees, thence N 38 W. 93 poles to two ashes and a buckeye; thence N. 83. W. 350 poles with the line of James Galloway's sur- vey No 4813, crossing the creek at 294 poles to a lynn ash and buckeye southwest corner to said Galloway's survey; thence N. 79 W. 107 poles to the beginning.

Alexander Kerr 2
James Stephens 3 C.C.
Joshua Sharp M.k.r

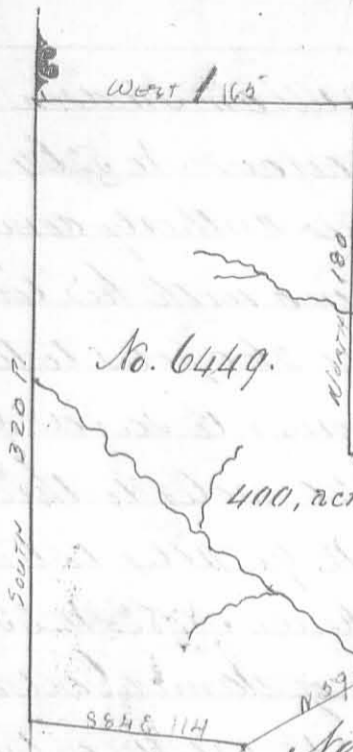
James Galloway Junr S.S.
June 4th 1809
August 29th 1809

Surveyed for James Galloway Junr Apr 46 acres of land on part of a Military warrant No. 5404 on Mack- a chack a branch of Mad river: Beginning at three black oaks southeasterly corner to Thomas Worthington survey No. 4479 running S. 76 E 27 poles to two white oaks and a hickory southwest corner to Henry De- lays survey No 2220; thence with Delays line N 20 W 160 poles crossing the creek at 100 poles to a stake in a prairie northwest corner to said Delays survey; thence with another of his lines N. 69. E. 100 poles to an Elm and sugar tree northeast corner to Delays in the line of Holland Nancy's survey No. 3224; thence with Nancy's line N. 21. W. 36 poles to two white oaks in said line thence S 70 W 120 poles to a white oak in the line of said Worthington's survey; thence with his line S. 20 E. 180 poles crossing the creek to the beginning.



George Srauf 3
Richard Balach 3 C.C.
William Thom M.k.r.

James Galloway Junr S.S.
December 10th 1809
January 12th 1810

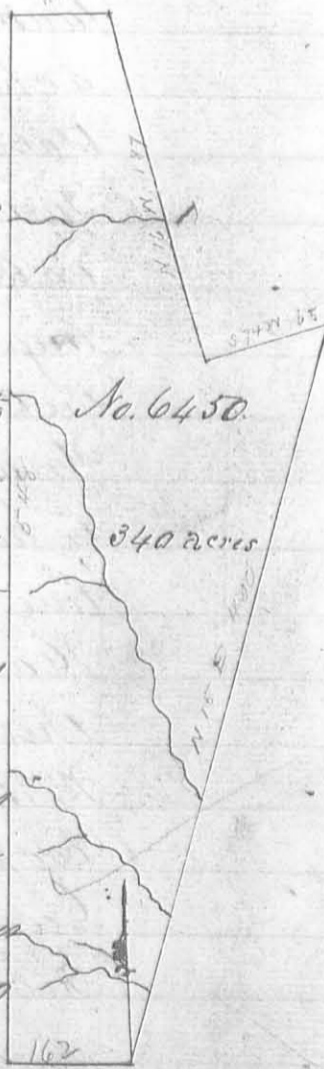


Surveyed for John Galloway 400 acres of land on part of a Military Warrant No. 5644 on the waters of Mead River; beginning at a white oak and sugar tree North east corner to Alexander Sandridges survey No. 4477 and Southwest corner to said Sandridges survey No. 3220 running south 320 poles crossing a branch at 148 poles to three white oaks thence S. 84. E. 114 poles to a hickory, thence N. 59. E 252 poles crossing a branch to three elms in the line of James Calderwoods survey No. 3138, thence North 18 poles to a stake southeast corner to William Thom's survey No. 6447; thence West 168 poles to two white oaks southwest corner to said Thom's survey; thence with another of his lines north 180 poles crossing a branch at 76 poles to a poplar and a black walnut corner to said Thom's survey in the line of said Sandridges survey No. 3220, thence with his line West 165 poles to the beginning.

Ebenezer Zane 3
Isaac Zane 3 C.C.
William Thom m.k.r.

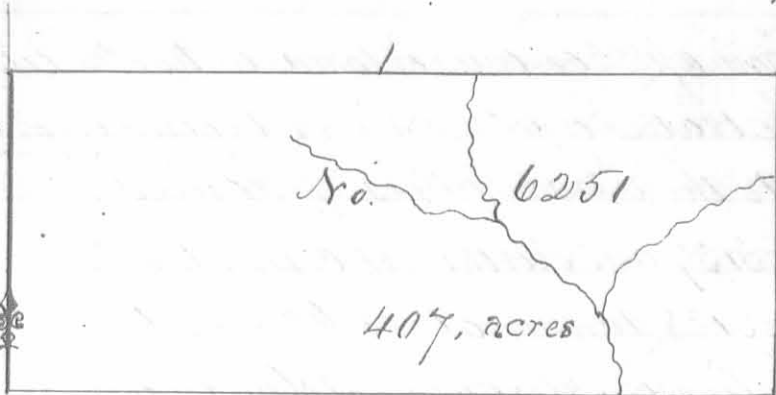
James Galloway Junr D. S.
December 1st 1809
January 30th 1810

Surveyed for John Galloway 340 acres of land on part of a Military Warrant No. 5644 on the waters of Mead river. Beginning at a beech southwest corner to James Calderwoods survey No. 3137 running with his line N. 15 E. 400 poles crossing a branch at 40 one at 80 and one at 142 poles to two red oaks North west corner to said survey and corner to said Calderwoods survey No. 3139 thence with the line of the last mentioned survey S. 74 N. 60 poles to a dogwood and hickory corner to said survey; thence with another line of said survey N. 16 N. 187 poles crossing a branch to two lymus an ash and red oak in said line; thence West 44 poles to three lymus from one root a hickory and white walnut Northeast corner to Alexander Sandridges survey No. 3220, thence with his line South 548 poles crossing several branches to three sugar trees in said line; thence East 162 poles to the beginning.



Ebenezer Zane 3
Isaac Zane 3 C.C.
William Thom m.k.r.

James Galloway Junr D. S.
November 20th 1809
January 30th 1810



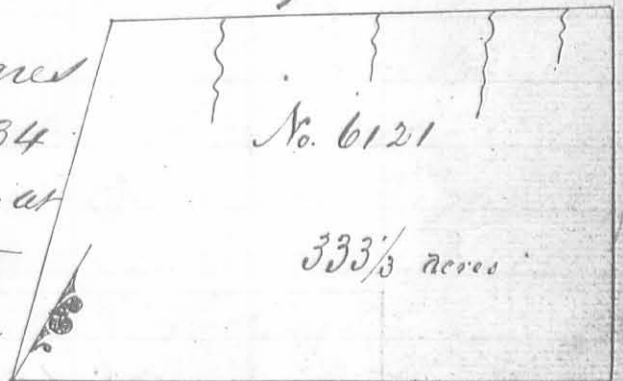
Surveyed for William Evans 407
acres of land on a Military Warrant
No. 5528 on the waters of Nois creek.
beginning at a beech and two
sugar trees Northwest corner to
Benjamin Biggs survey No. 5209

running with his line East 400 poles crossing a branch to three beches
Northeast corner to said Biggs survey; thence North 163 poles
crossing a branch to two ashes; thence North 400 poles crossing
a branch at 157 poles to a sugar tree black oak and hickory
thence South 163 poles to the beginning.

David Sharp 3
Neal Gun 3 166
Walter Gun M.k.r.

Duncan McArthur S.S.
October 16th 1809
December 14th 1809

Surveyed for John Morris ap^u 333 $\frac{1}{3}$ acres
of land on a Military Warrant No. 5234
on the waters of Noaa river. Beginning at
two sugar trees Northwesterly corner to
David Bradfords survey No. 3136 in
the line of James Calderwoods survey.

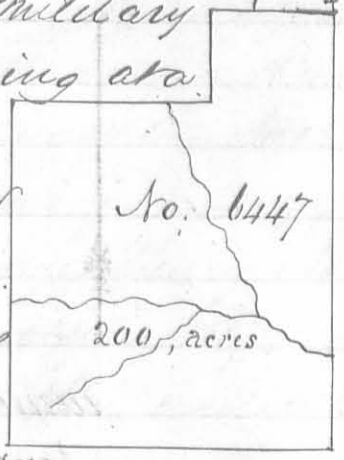


No. 3139 running with Bradfords line N. 58 E. 315 poles to two
Ironwoods and a beech Northeastly corner to said Bradfords
survey; thence N. 32 W. 195 poles to two sugar trees two hickories
a lynn and poplar; thence S 56 W 260 poles crossing a branch at
18 one at 60 one at 120 and one at 200 poles to two poplars a sugar
tree and beech in the line of said Calderwoods survey; thence with
said line S. 16 E. 195 poles to the beginning.

Neal Gun 3
Christopher Popejoy 3 166
Walter Gun M.k.r.

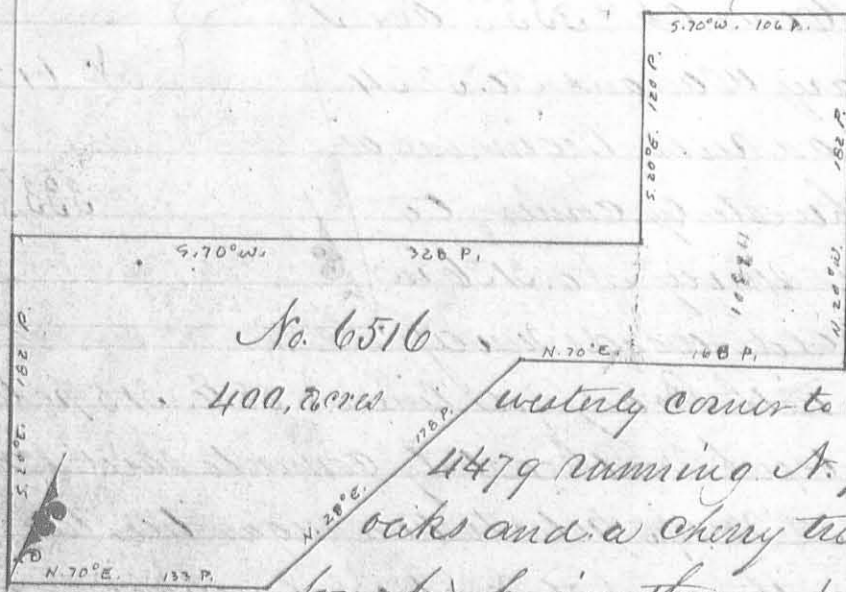
Duncan McArthur S.S.
November 15th 1809
December 14th 1809

Surveyed for William Thom ap^{pr} 200 acres of land on two military warrants No 5664 on the waters of Mead river; beginning at a beech southwest corner to the representatives of James Calderwoods survey No. 3137 and Northwest corner to said Calderwoods survey No 3138 running west 62 poles to three sugar trees in the line of Alexander Standridge survey No. 3220; thence with his line south 48 poles to an Elm Lynn and sugar tree southeast corner to said Standridge survey; thence with another of his lines West 104 poles crossing a branch to a poplar and black Walnut in said line; thence South 180 poles crossing a branch at 104 poles to two white oaks; thence East 168 poles to a stake in the line of said Calderwoods survey No. 3138, thence with said line, North 228 poles crossing a branch to the beginning.



Ebenezer Fawcett
Isaac Fawcett
William Thom M.k.r

James Gallaway Jun^r S.
November 20th 1809
January 11th 1810



Surveyed for Zadock Walker ap^{pr} 400 acres of land on a military warrant No 5572 on the waters of Mead river. Beginning at a white oak marked for 30 Miles in Snelwons line North westerly corner to Thomas Northingtons survey No. 4479 running N. 70. E 133 poles to two black oaks and a cherry tree; thence N. 28 E. 178 poles to four hickories; thence N. 70. E 168 poles to a stake, thence N 20 W 182 poles to two hickories, thence S. 70. W. 106 poles to a black oak and hickory; thence S. 20. E. 120 poles to a black oak and white oak; thence S. 70. W. 328 poles to two black oaks south westerly corner to said Samuel Findley's survey, No. 4493; thence S. 20. E. 182 poles to the beginning.

Solomon McCulloch
Samuel Herd
Conrad Meester M.k.r

James Denny S.
November 30th 1811
December 24th 1811