

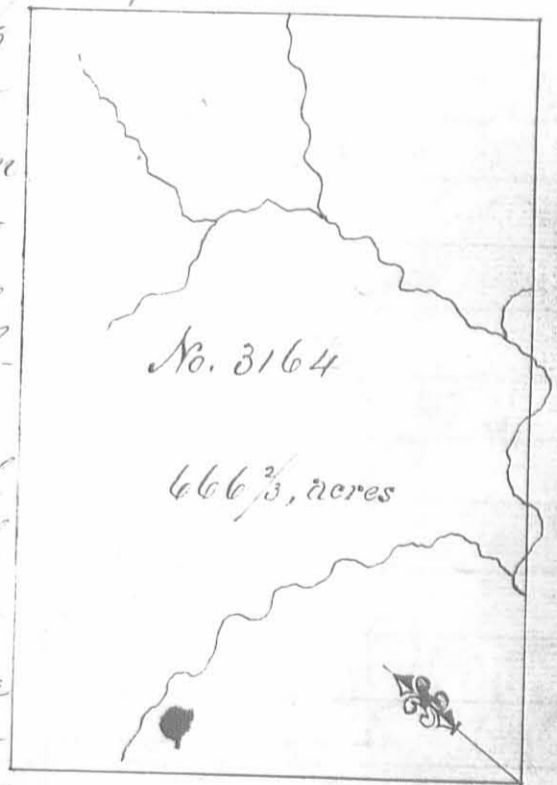
Surveyed for Layton Yancey 888 $\frac{2}{3}$ acres of land on part of a Military warrant No. 2921 on the waters of the Morani. Beginning at an ash, lynn and two beech southwest corner to said Yanceys survey No. 3321, running with his line N. 10. W. 400 poles crossing two branches to an ash, Ironwood and dogwood northwest corner to said Yanceys survey; thence S. 80 W. 356 poles crossing a branch at 100 and one at 240 poles to two ash and a red elm; thence S. 10. E. 400 poles crossing

two branches to an ash elm and ironwood; thence N. 80. E. 356 poles to the beginning.

Peter Murphy 3
William Boyd 3 C.O.
John Brittle m.k.e.

Lucas Sullivan S.S.
April 3^d 1799
October 3^d 1799

Surveyed for Philip Clayton of 666 $\frac{2}{3}$ acres of land on a Military Warrant No. 4322 on the waters of Bearas run a branch of Darby's Creek. Beginning at a large white ash lynn an sugar tree Northwest corner to Philip Slaughters survey No. 3154, running with his line N. 52. E. 400 poles crossing a branch several times to three hickories. North east corner to said Slaughters survey; thence N. 38. W. 267 poles crossing a branch to three beechs, thence S. 52. W. 400 poles to two beechs, thence S. 38 E. 267 poles to the beginning.



George Pennitt 3
George Hollaway 3 C.O.
Abraham Riddle m.k.e.

Lucas Sullivan S.S.
September 30^m 1799
October 4th 1799

1
 389 1/2 acres
 No. 3688
 389 acres

Surveyed for Layton Gancey 389 acres of land on part of a Military warrant No 2921 on the waters of Darby's creek: Beginning at two beech and a sugar tree southwest corner to David Duncans survey No 479, running with his line N. 37. W. 398 poles to two beech's Northwest corner to said Duncans survey, thence S. 53. W. 156 poles to two beech's; Thence S. 37. E. 398 poles to two beech and a sugar tree, Thence N. 53 E. 156 poles to the beginning.

Peter Murphy
 William Boyd 3/66
 John Britte mkr.

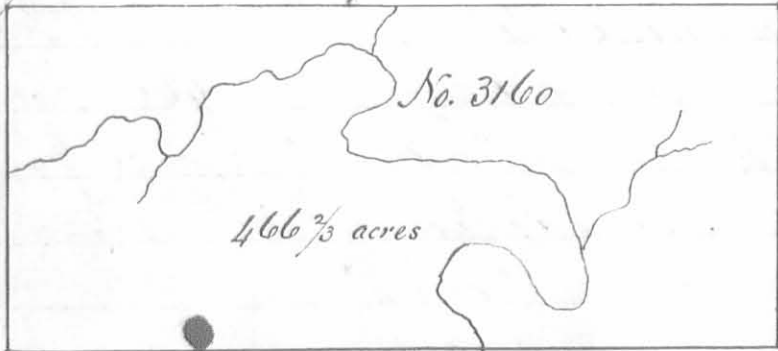
Lucas Sullivant D.S.
 September 18th 1799
 October 3^d 1799

Surveyed for Philip Slaughter 150 acres of land on part of a military warrant No. 69 on the waters of Beaver run a branch of Darby's creek Beginning at two beech's southwest corner to George McCredie's survey No. 3161, running S. 52, W. 178 poles to a walnut ash and poplar; thence N. 38. W 135 poles to a beech and sugar tree thence N. 52, E. 178 poles to two beech's northwest corner to said McCredie's survey; thence with his line S. 38. E. 135 poles to the beginning.

No. 3159
 150 acres

Robert Silby
 Philip Motherstough 3/66
 Abraham Riddle mkr.

Lucas Sullivant D.S.
 September 17, 1799
 October 1st 1799

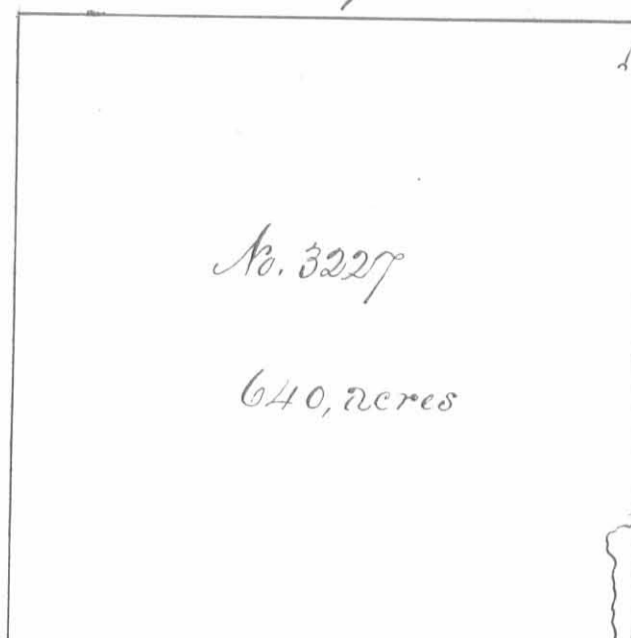


Surveyed for Levi Collingsworth 466 2/3 acres of land on two Military warrants No. 1490 & 1879 on Beaver run a branch of Darby's creek: Beginning at two buckeyes southwest corner to George McCredie's survey No

3155 running with McCredie's line N. 52 E 400 poles crossing Beaver run at 200 poles, to two sugar trees and an elm southeast corner to said McCredie's survey; thence S. 38, E. 178 poles to two beech's; Thence S. 52. W 400 poles crossing the run to two beech's, thence N. 38, W. 178 poles to the beginning.

George Donnell
 George Holoway 3/66
 Thomas Treacle mkr.

Lucas Sullivant D.S.
 September 27th 1799
 October 4th 1799



No. 3227

640, acres

Surveyed for Augustine J. Smith representative of Matthew Smith and 640 acres of land on part of Military warrant No. 4695 on the waters of Mead river; beginning at two hickories and a sugar tree Southwest corner to said Smith's survey No. 3226 and southeast corner to said Smith's survey No. 3225 running S. 21. E. 320 poles crossing a branch at 26 poles to a walnut, ash and elm on the side of a branch; thence S. 69. N.

320 poles to two white oaks; thence N. 21. W. 320 poles to two hickories a black oak and sugar tree southwest corner to said Smith's survey No. 3225; thence with said line N. 69. E. 320 poles to the beginning.

William Proctor

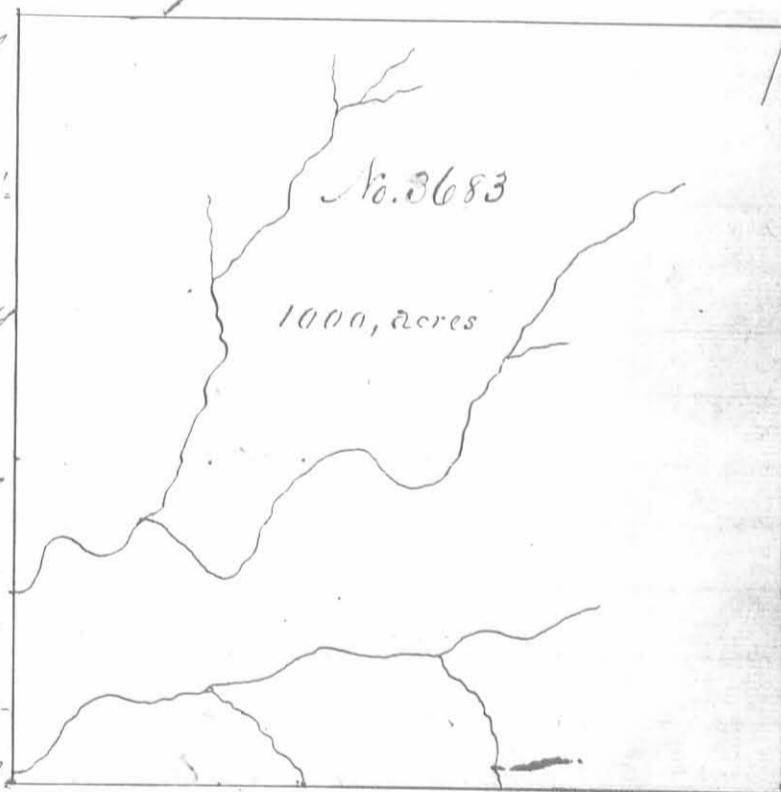
Gregory Fagans 3 C.C.

Philip Motherstough, Mkr.

Lucas Sullivan D.S.

July 1st 1798October 5th 1799

Surveyed for Robert Power 1000 acres of land on part of a Military Warrant No. 1775 on the waters of the Miami: Beginning at a red oak white oak and hickory Northwest corner to William Cochran's survey No. 3439 running with Scott's line S. 10. E. 400 poles to two hickories and a sugar tree Southwest corner to said Cochran's Survey; thence S. 80. W. 400 poles crossing several branches to two lymns, two sugar trees and an Elm on the side of a branch; thence N. 10. W. 400 poles crossing a branch at 100 poles to a red oak hickory and sugar tree; thence N. 80. E. 400 poles passing the southwest corner of John Scott's survey No. 3442 and with his line to the beginning.



No. 3683

1000, acres

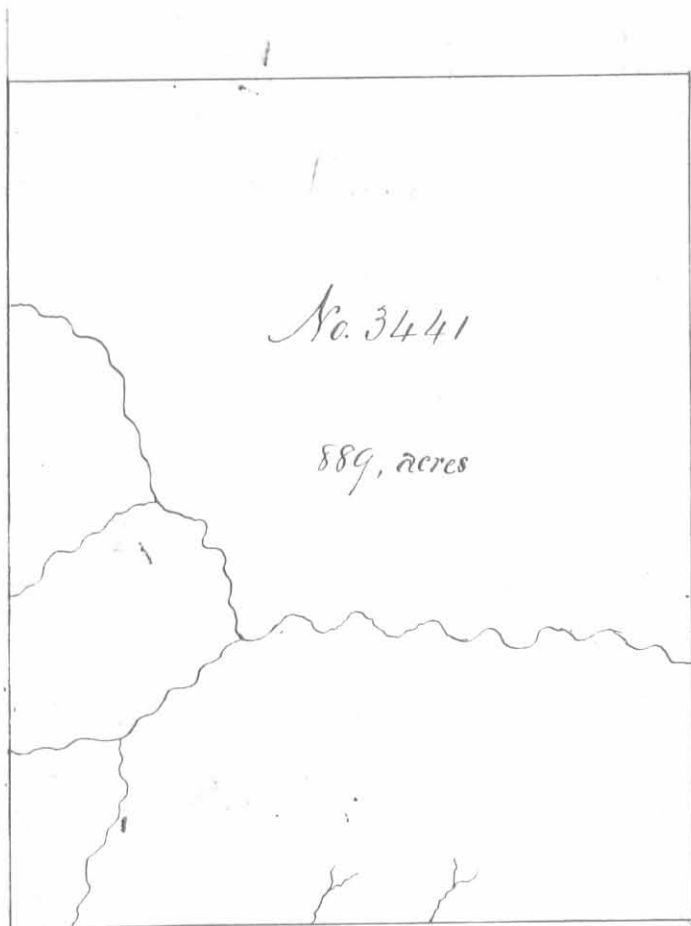
Robert Silvy

Philip Motherstough 3 C.C.

Abraham Ruddle Mkr.

Lucas Sullivan D.S.

September 17th 1799October 4th 1799



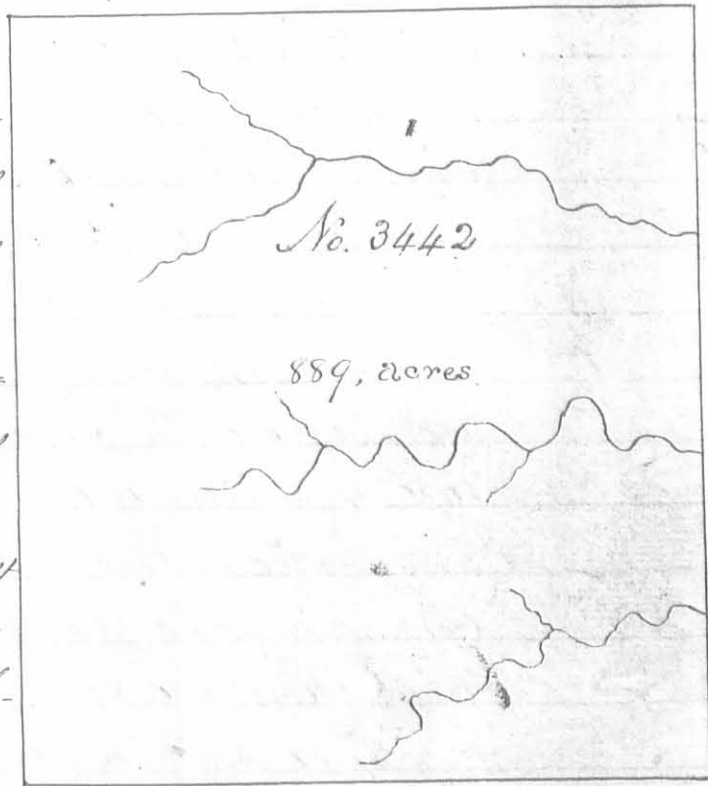
Surveyed for John Scott 889 acres of land on part of a Military Warrant No. 3187 on the waters of Scioto: Beginning at a white oak hickory and ash southwest corner to William Millers survey No 3327 running with his line N. 10 W. 400 poles crossing a branch to a buckeye hickory and sugar tree Northwest corner to said Miller; thence S 80. N. 356 poles to a beech large white oak and ash; thence S. 70. E. 400 poles crossing several drains to three lymms from one root; thence N. 50 E. 356 poles crossing several drains to

the beginning.

Philip Mothershead ³ mms
 Robert Siley ³ mms C.C.
 John Brittle mkr

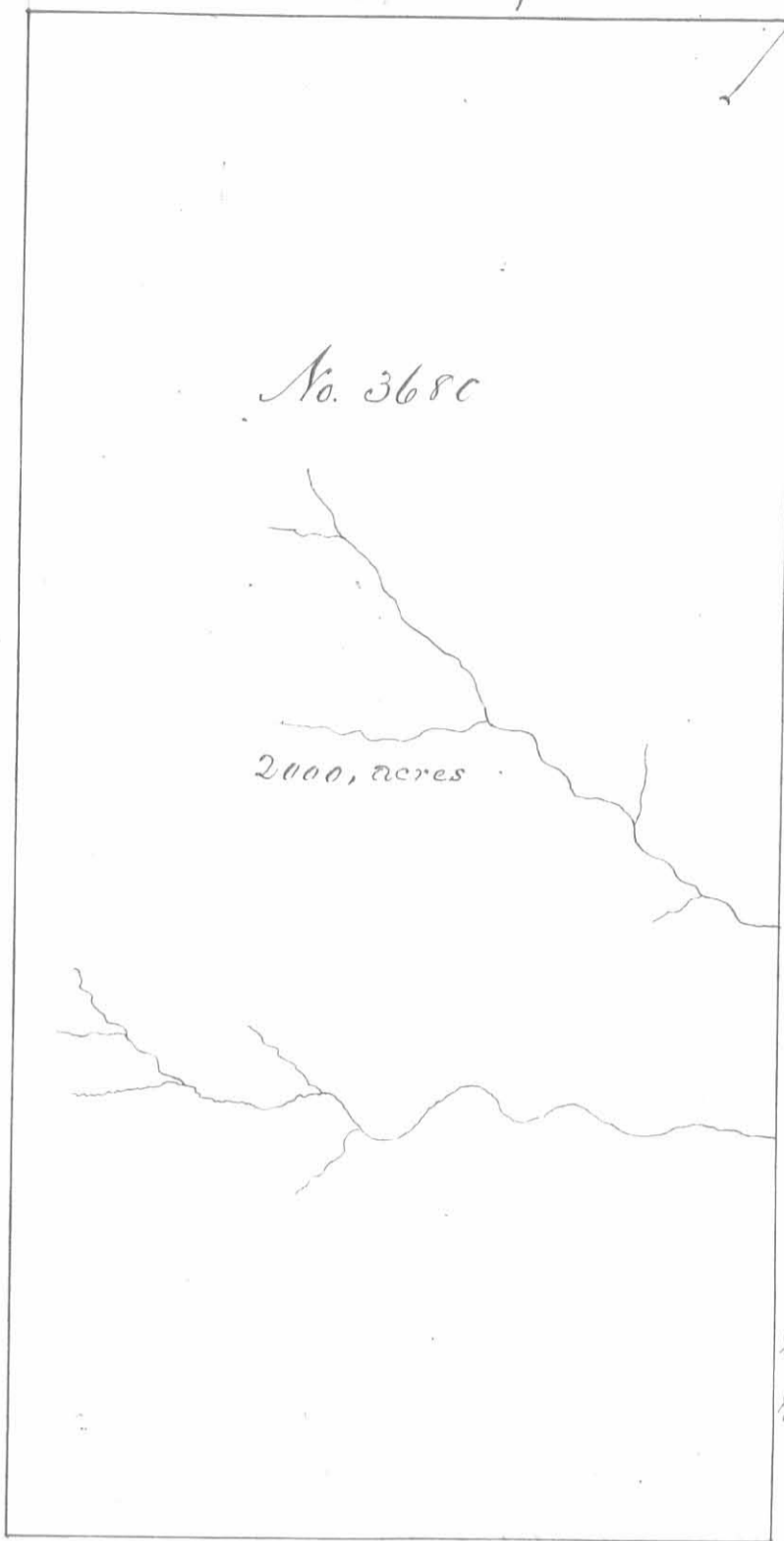
Lucas Sullivan D.S.
 September 14th 1799
 September 30th 1799

Surveyed for John Scott 889 acres of land on part of a Military Warrant No. 3187 on the waters of Scioto: Beginning at three lymms from one root, south west corner to said Scotts survey No. 3441 running with his line N. 10, W 400 poles crossing several drains to a beech large white oak and ash Northwest corner to said Scotts former survey thence S. 80. N. 356 poles to two hickories and a sugar tree; thence S 10 E 400 poles to two sugar trees and a white walnut; thence N. 50. E. 356 pole to the beginning.



Peter Murphy ³ mms
 William Boyd ³ mms C.C.
 John Brittle mkr

Lucas Sullivan D.S.
 September 14th 1799
 September 30th 1799



Surveyed for Robert Power
 2000 acres of land on part of
 a Military Warrant No. 1775,
 on the waters of Beaver Run
 a branch of Darby's Creek:
 Beginning at a fig tree, ash
 and hickory Northwest corner
 to George McCordis Survey
 No. 3155 running with his
 line, passing his Southeast cor-
 ner S. 38. E. 800. poles crossing
 two branches to two Sugar trees
 in the line of Richard Stephen-
 sons Survey No. 3163; Thence
 with Stephensons line pass-
 ing his Northwest corner S
 52, W. 400 poles to two Sugar
 trees and a beech; thence
 N. 38, W. 800 poles to an ash
 and lynn; thence N. 52, E.
 400 poles to the beginning.

George Bennett
 George Holloway & Co. Lucas Sullivan & S.
 Thomas Peacle Mkr. - September 17th 1799.
 September 30th 1799

Surveyed for Richard Stephenson heir at
 law to Hugh Stephenson dec^d 800 acres of
 land on part of a Military Warrant No
 2988 on Darby's Creek: Beginning at two Ma-
gartrees on the west bank of the west bank
 the creek in the line of Lucas Sullivants
 Survey No. 3161, running N. 53 E 85 poles
 crossing the creek to a sugar tree and
 beech in said line; thence N. 37, W. 398 poles
 to two beech; thence S. 53 W. 322 poles crossing
 the creek at the mouth of Beaver run to two su-
 gar trees; thence S. 37 E. 398 poles, crossing several
 branches to a hickory and sugar tree in said Sullivant line; thence with said line N. 53
 E. 237 poles to the beginning.



George Bennett
 George Holloway & Co.
 Thomas Peacle Mkr.

Lucas Sullivan & S.
 April 10th 1799
 October 1st

No. 3753

1000, acres

Surveyed for Lucas Sullivant
 upon 1000 acres of land on part of a
 Military warrant No. 4732 on the
 waters of Braverum a branch of
 Darby's Creek: Beginning at a large
 ash, sugar tree and lynn, northwest
 corner to Philip Slaughters Survey No
 3154 and Southeast corner to George
 McCordie's survey No. 3161 running
 with Slaughters line S. 38. E 400 poles
 to a poplar ash and hickory south
 west corner to said Slaughters survey
 and Northeast corner to Robert Powers

Survey No. 3680, thence with his line S. 52 W. 400 poles to an ash and lynn
 Northwest corner to said Powers survey; thence N. 38 W. 400 poles to a walnut
 ash, and poplar, southwest corner to said Slaughters survey No. 3159, thence
 with said line, passing his southeast corner and the southwest corner
 of said McCordie's survey and with McCordie's line N. 52 E 400 poles to
 the beginning.

Robert Silvey

Philip Mothorstough 3 C.C.

Abraham Ruddle Mkr.

Lucas Sullivant D.S.

September 30th 1799October 5th 1799

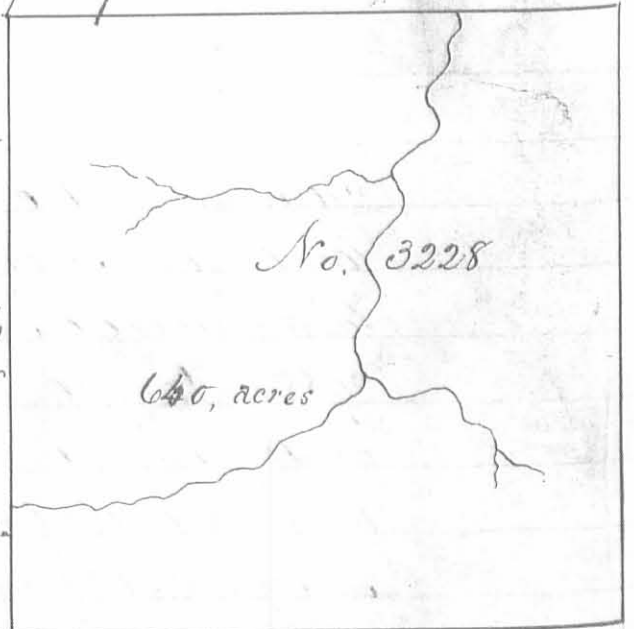
Surveyed for Augustine S. Smith rep-
 resentative of Matthew Smith, dec^d 640
 acres of land on part of a Military war-
 rant No. 4695 on the waters of Mad
 river: Beginning at two hickories and a
 sugar tree, southwest corner to said Smith's
 survey No. 3226, southeast corner to said
 Smith's survey No. 3225 and Northeast
 corner to said Smith's survey No. 3227, run-
 ning with the line of the last mentioned
 survey S. 21. E. 320 poles crossing a branch
 at 26 poles to a walnut, ash, and elm southeast corner to said Smith's
 survey No. 3227, thence N. 69. E. 320 poles, to two sugar trees, thence N.
 21 W. 320 poles to two elms southeast corner to said Smith's survey No. 3226;
 thence with said line S. 69. W. 320 poles crossing a branch at 80 poles to
 the beginning

William Proctor 3

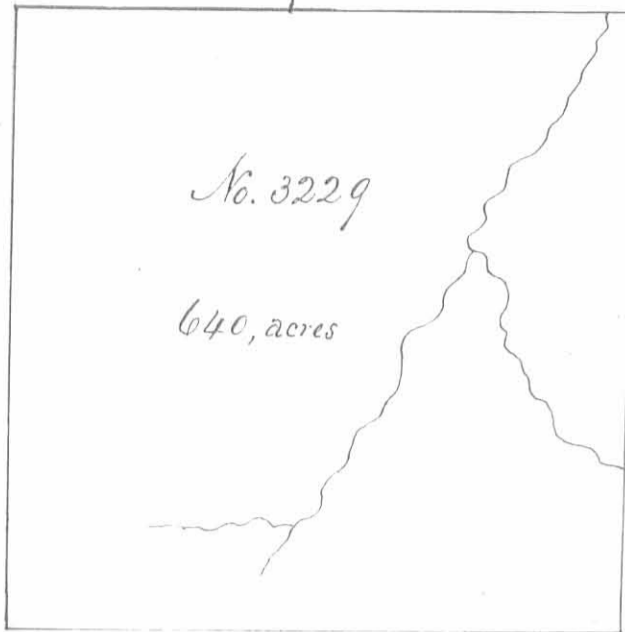
Grigsby Fagan 3 C.C.

Philip Mothorstough Mkr.

Lucas Sullivant D.S.

June 1st 1798October 5th 1799

Surveyed for Augustine S. Smith



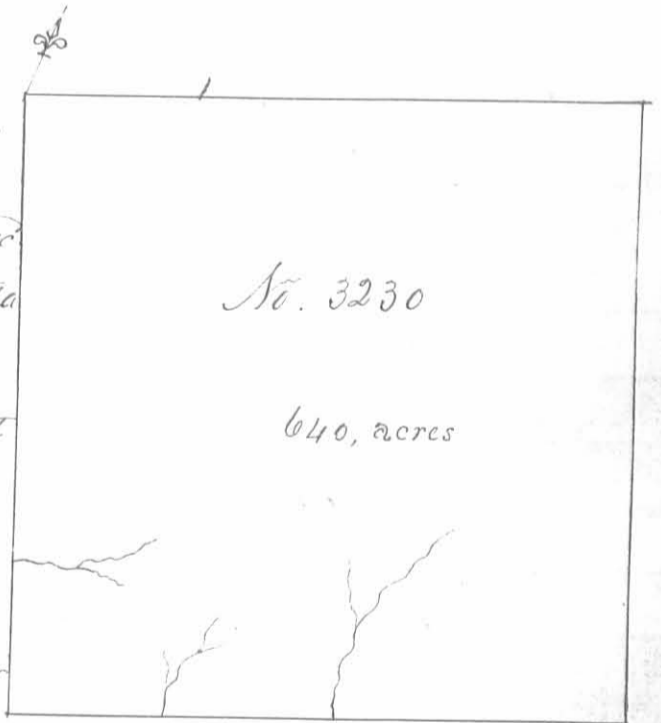
Smith representative of Matthew Smith Dec^d 640 acres of land on part of a military warrant No. 4695 on the waters of Mead river. Beginning at a walnut ash and elm southwest corner to said Smith's survey No 3228 and southeast corner to said Smith's survey No. 3227 running S 21 E. 320 poles crossing a branch at 240 poles to an ash, white oak hickory and sugar tree, thence S. 69. W 320 poles to two hickories an elm and ash on the side of a branch; thence N. 21 W. 320 poles to two white-

oaks southwest corner to said Smith's survey No 3227, thence with said line, N. 69. E. 320, poles to the beginning.

William Proctor 3
 Gregory Fagans 3 C.C.
 Philip Motherstough Mkr.

Lucas Sullivan D.S.
 June 1st. 1798
 October 5th 1799

Surveyed for Augustine S. Smith representative of Matthew Smith dec^d 640 acres of land on part of a Military Warrant No. 4695 on the waters of Mead river. Beginning at a walnut ash and elm southwest corner to said Smith's survey No 3228, southeast corner to said Smith's survey No 3227 and Northeast corner to said Smith's survey No. 3229, running with the line of the last mentioned survey S. 21. E. 320 poles crossing a branch at 240 poles to an ash, white oak, hickory and sugar tree southeast corner to said survey; thence N. 69. E. 320 poles crossing a branch at 80 and one at 170 poles to an ash and two mulberries; thence N. 21. W. 320 poles to two sugar trees southeast corner to said Smith's survey No. 3228, thence with the line of the same S. 69. W. 320 poles to the beginning.



William Proctor 3
 Gregory Fagans 3 C.C.
 Philip Motherstough Mkr.

Lucas Sullivan D.S.
 June 1st. 1798
 October 5th 1799

No. 3753

1000, acres

Surveyed for Lucas Sullivan
 approx 1000 acres of land on part of a
 Military warrant No 4732 on the
 waters of Bearers run a branch of
 Darby creek, beginning at a large
 ash, sugar tree and lynn, North
 west corner to Philip Slaughters sur-
 vey No 3154 and southeast corner
 to George McCredie's survey No.
 3161 running with Slaughters line
 S. 38. E. 400 poles to a poplar ash
 and hickory southwest corner to
 said Slaughters survey and North
 east corner to Robert Powers survey No 3680, thence with his line
 S. 52. W. 400 poles to an ash and lynn, Northwest corner to said Powers
 survey, thence N. 38 W. 400 poles to a walnut ash and poplar South
 west corner to said Slaughters survey No. 3159; thence with said
 line, passing his southeast corner and the southwest corner of
 said McCredie's survey and with McCredie's line N. 52. E. 400
 poles to the beginning.

Robert Silby
 Philip

Lucas Sullivan D.S.
 September 30th 1799
 October 5th 1799

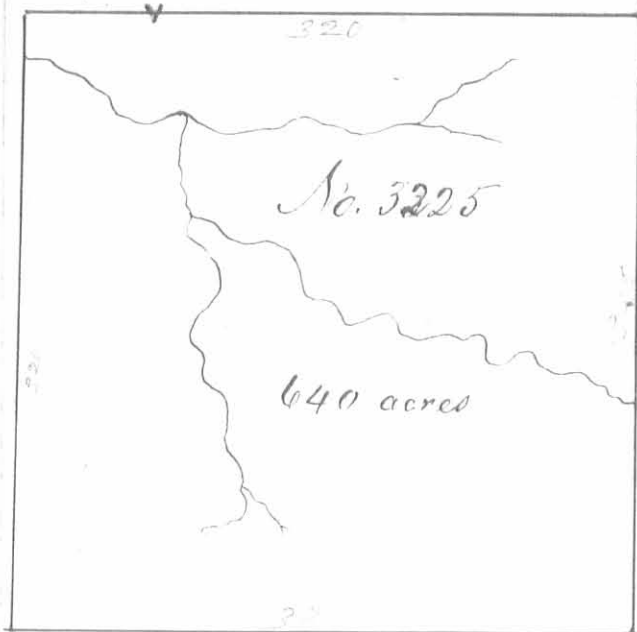
Surveyed for Augustine J Smith repre-
 sentative of Matthew Smith dec a
 640 acres of land on part of a Military
 warrant No. 4695 on the waters of
 Mad river. Beginning at a large red
 oak, black walnut and sugar tree south
 west corner to Holland Haneys survey
 No 3223, southeast corner to said Haneys
 survey No 3224 and northeast corner to
 said Smiths survey No. 3225 running
 with said line S. 21 E 320 poles crossing
 a branch at 200 poles to two hickories and a sugar tree southeast corner to said
 Smiths survey; thence N. 69. E 320 poles, crossing a branch at 240 poles to two elms
 thence N. 21 W. 320 poles crossing a swamp at 150 poles to a sycamore walnut and elm on the side of
 a branch, southeast corner to Haneys survey No 3223; thence with said line S. 69 W. 320 poles to the beginning.

William Proctor
 Gregory Fagans
 Philip Northborough

No. 3226

640, acres

Lucas Sullivan D.S.
 June 1st 1798
 October 5th 1799



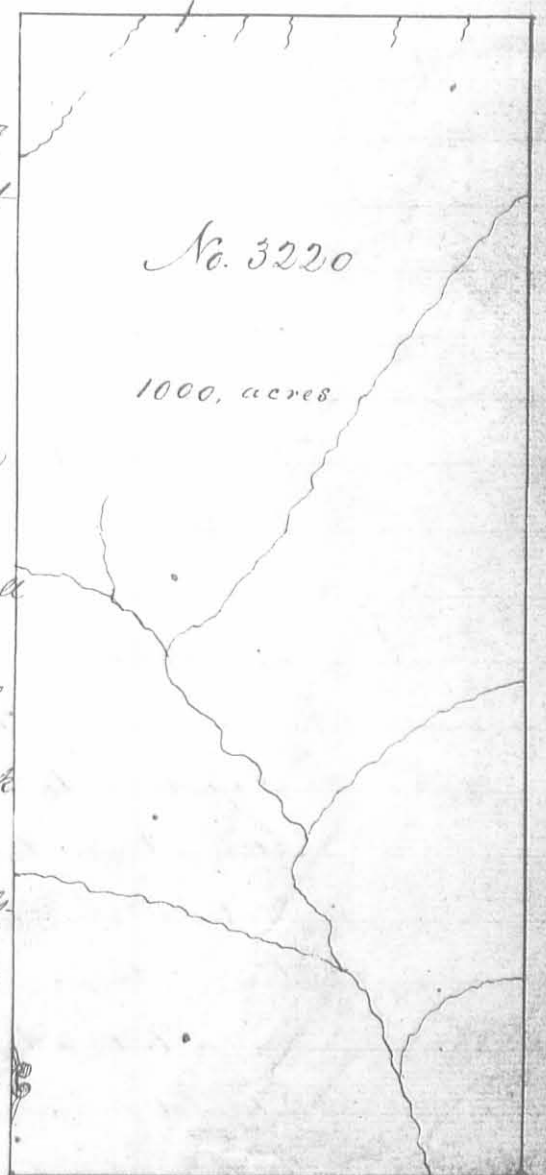
Surveyed for Augustine J Smith representative of Matthew Smith dec'd six hundred and forty acres of land on part of a military warrant No. 4695 on the waters of Head river: Beginning at a large red oak, black walnut and sugar tree southwest corner to Holland Nancy's survey No. 3223 and southeast corner to said Nancy's survey No. 3224, running S. 21. E 320 poles crossing a branch at two hundred

poles to two hickories and a sugar tree, thence S. 69 N. 320 poles to two hickories a black oak and sugar tree, thence N. 21 W 320 poles crossing the branch at 300 poles to two elms and a black walnut southwest corner to said Nancy's survey No. 3224 thence with his line N. 69. E. 320 poles to the beginning.

William Proctor
 Grigsby Fagans 3 C.C.
 Philip Northsleigh M.R.

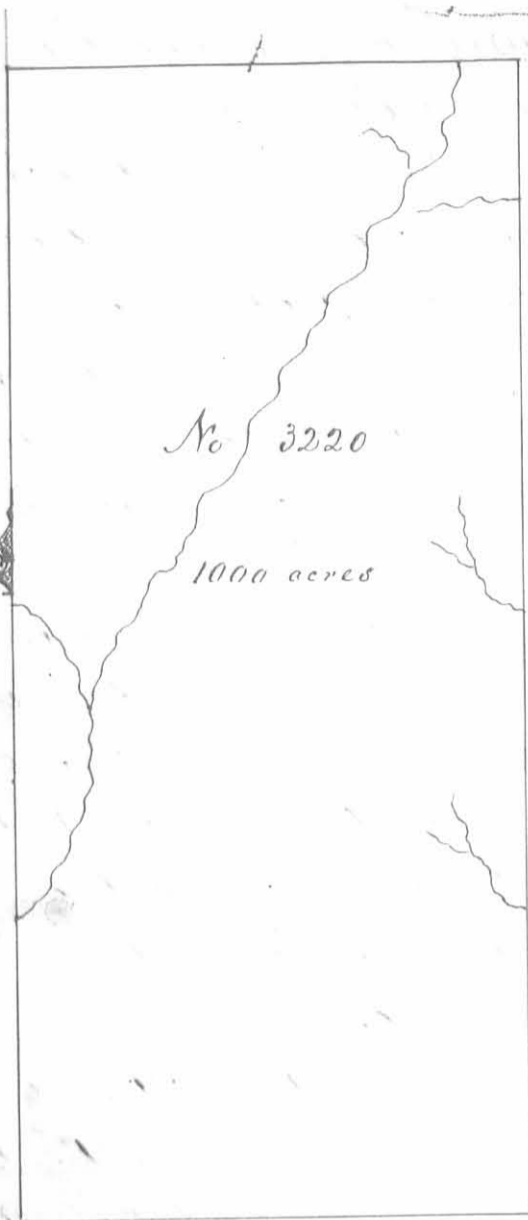
Lucas Sullivan D.S.
 June 17th 1798
 October 5th 1799

Surveyed for Alexander J Dandridge 1000 acres of land on a Military warrant No. 1225 on the waters of Head river; beginning at a sugar tree and white walnut, southeast westerly corner to said Dandridge's survey No. 3220, running with the line of said survey North 600 poles crossing several small branches to a beech, elm and small sugar tree northeastwardly corner to said survey thence East 267 poles, crossing several small branches to three lymes, two from one root a hickory and white walnut; thence South 600 poles crossing several branches to a black walnut, elm, lym and sugar tree on the top of a ridge, thence West 267 poles, crossing a branch at 50 poles to the beginning.



John McDonald
 John Morris 3 C.C.
 George Cox M.R.

Duncan McArthur D.S.
 November 22nd 1803
 April 30th 1804

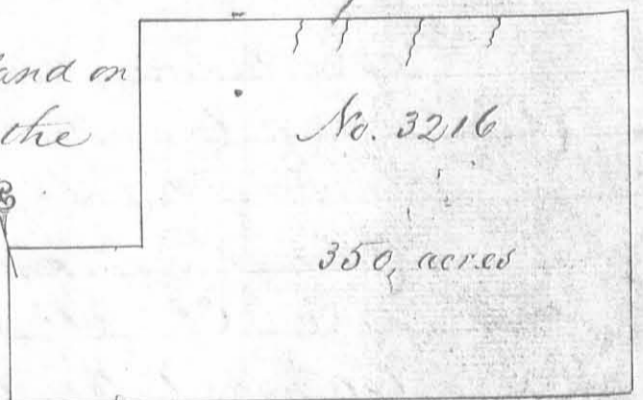


Surveyed for Alexander Sandridge 1000 acres of land on a Military warrant No. 1224 on the waters of the big Miami and Koa river. Beginning at a beech, white oak, sugar tree and cherry tree, the beech marked **MDDM:ST** in a bottom about three miles westwardly from Isaac James present improvement and about one and a half miles up a branch, that heads northeastwardly from an old Indian town and about eighteen poles west of said branch, running North 300 poles to a sugar tree beech and hickory on a branch thence east 267 poles, crossing a branch at 238 poles to a beech elm and small sugar tree, thence South 100 poles crossing several branches to a sugar tree and white walnut; thence west 267 poles to three white oaks; thence North 300 poles crossing a branch at 160 poles to the beginning.

John McDonald
John Morris
George Cox m.k.r.

Duncan McArthur D.S.
November 22nd 1803
April 30th 1804

Surveyed for Samuel Davis of 350 acres of land on part of a Military warrant No. 4525 on the waters of Koa river. Beginning at two buckeyes and a hackberry on the road that leads from Isaac James to the head of Darbys creek and in the line of John



McDonalds entry No. 3214 running with McDonalds line S. 15. W. 82 poles to two sugar trees and an elm; thence S. 75 E. 321 poles to a large lynn and beech on the north side of a hill; thence N. 15. E. 200 poles crossing said road at 160 poles to a beech, sugar tree and cherry tree on the south side of a hill; thence N. 75 W. 252 poles crossing several small draws to two sugar trees and two beeches easterly corner to Thomas McDonalds entry No. 3215, thence with said line S. 15. W. 118 poles to a sugar tree southerly corner to said entry, thence with another line of said entry N. 75 W. 69 poles to the beginning.

John McDonald
John Morris
Samuel McArthur m.k.r.

Duncan McArthur D.S.
November 23rd 1803
April 30th 1804