

No. 3317

888 ²/₃, acres

Surveyed for the Representatives of James Parks 888 ²/₃ acres of land on part of a Military Warrant No. 4852: Beginning at two sugar trees and a white walnut, southwest corner to said Representatives survey No. 3316, running N. 10. W. 400 poles to two hickories and a sugar tree in the line of Layton Yanceys survey thence S. 80. W. 355 poles to two white oaks and a black oak; thence S 10 E 400 poles to a stake, thence N. 80. E. 355 poles to the beginning.

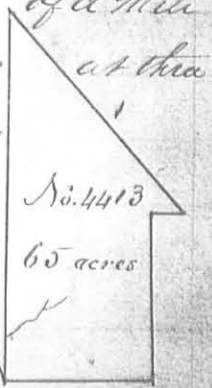
Peter Murphy ³/₃
 William Boyd ³/₃ M.C.
 John Brille M.C.R.

Lucas Sullivan D.S.

April 3^d 1799

May 8th 1806

Surveyed for Duncan McArthur 65 acres of land on part of a military warrant No. 5037 on the waters of Moad river. Beginning at three buckeyes, a forked white walnut and hickory Northwestly corner to James McNutt survey No. 4195 in the line of the representative of James Calderwoods survey No. 3137, running with McArthurs line S. 75. E. 80 poles to two sugar trees and an elm southwest corner to Samuel Davis survey No. 3216 thence with Davis line N. 15 E. 82 poles to two buckeyes and a hackberry, thence with another of his lines S. 75. E. 18 poles crossing a spring branch to two buckeyes and a hickory, thence N. 25 W. 140 poles to a maple and two bushes; thence S. 17. W. 190 poles crossing a branch at 160 poles to the beginning.

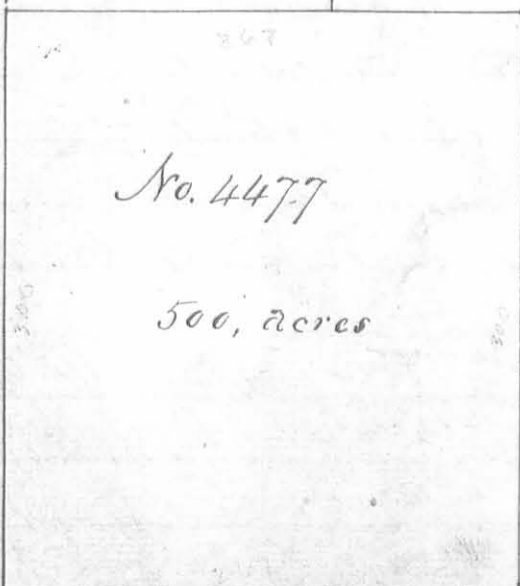


John McDonald ³/₃
 Colin McCollum ³/₃ M.C.
 John Arken M.C.R.

Duncan McArthur D.S.

September 2nd 1805

September 9th 1805



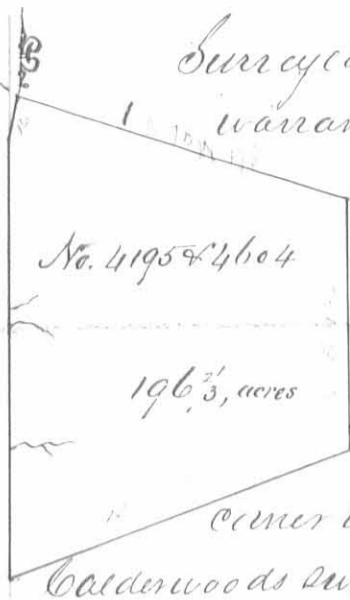
No. 4477

500, acres

Surveyed for Alexander Sandridge 500 acres of land on part of a Military Warrant No. 1227 on the waters of Big Miami and Moad river; beginning at three white oaks southwest corner to McArthur survey No. 3220 running with his line East 267 poles to a sugar tree and white walnut southeast corner to said Sandridges survey, thence North 300 poles to two hickories, thence West 267 poles to two hickories and a black oak, thence North 300 poles crossing a branch to the beginning.

John Minis ³/₃
 John McDonald ³/₃ M.C.
 George Cox M.C.

Duncan McArthur D.S.
 April 25th 1805
 May 1st 1806

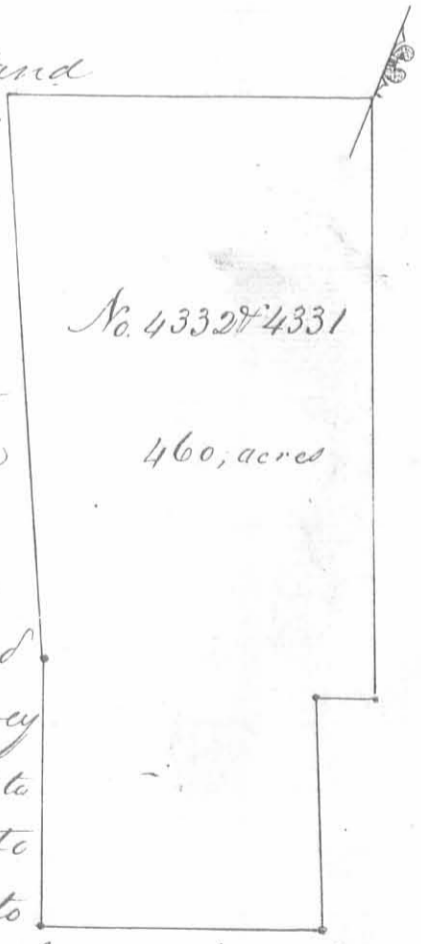


Surveyed for James McNeill 196 ²/₃ acres of land on part of a military warrant No 4878 on the waters of Mead river. Beginning at three buckeyes a hickory and forked white walnut south west corner to Duncan McArthur's survey No 4413 in the line of James Calderwoods survey No. 3137, running with Calderwoods line S. 45. W. 16 poles to a buckeye and white walnut or an ash and sugar tree southeast corner to said Calderwoods survey and Northeast corner to said Calderwoods survey No. 3138, thence with the line of the last mentioned survey South 232 poles crossing several spring branches to two dogwoods and an elm in the line of Thomas Parkers survey No 4497 thence with Parkers line N. 69 E. 185 poles to a small red oak hickory and two lymms thence N. 1 E. 132 poles to three small buckeyes and a large elm in the line of Samuel Davis' survey, No. 3216; thence with his line and with the line of said McArthur's survey N. 75. W. 176 poles to the beginning.

John McDonald
 Colin McCollum
 John Askew mkr.

Duncan McArthur D.S.
 September 2^d 1805
 September 16th 1805

Surveyed for Alexander Dimple 460 acres of land on part of a Military Warrant vizt. 360 acres on part of warrant No. 1642 and 100 acres warrant No 900 on the waters of Mead river. Beginning at a hickory and burr oak Northwesterly corner to John Means survey No. 4543 passing his southwesterly corner at 233 ¹/₃ poles and passing a black oak marked as a corner at 294 poles to a stake in a prairie in the line of Jesse Davis survey No 4524, thence with his line S. 70. W. 28 pole to a black jack and two burr oaks northwesterly corner to Davis' survey thence with another of his lines S. 20. E. 120 poles to a stake in a prairie, thence S. 70. W. 148 poles to a stake in a prairie, thence N. 20 W. 140 poles to three white oaks, two growing from one root, thence N. 23. W. 294 poles to two burr oaks and a white oak marked P, thence N. 70. E. 190 poles to the beginning.



William Pickrell
 Nathan Lundy
 Jeremiah Cobb mkr.

James Denny D.S.
 November 23^d 1804
 November 23^d 1804

Surveyed for
 John Campbell
 of 1200 acres of land
 on part of a Military War-
 rant No. 2274 on the waters
 of Mad river. Beginning
 at a hickory white oak
 and black oak in the line
 run by Isaac Sudder from
 the head of the little Miami
 towards the head of the Scioto
 river, thence with said line
 N. 20. W. 758 poles to a stake in
 the line of a survey in the name of
 Robert Armstrong No. 4284; thence
 with his line East 280 poles to a
 stake in Bowmans Cornfield and
 Northwest corner to Lawrence Butler's
 survey No. 4291, thence with his line
 South 146 poles to a black oak south
 west corner to said Butler, thence with
 another of his lines east 200 poles to a white oak and bur oak south
 east corner to said Butler's survey; thence S. 50. E. 130 poles to three black
 oaks and a white oak northwest corner to Samuel Smith's survey No.
 4182; thence with his line south 241 poles crossing two small bran-
 ches to a black walnut and white oak Northeast corner to Adam
 Deans survey No. 3672; thence with his line west 304 poles cross-
 ing two small branches to a forked white oak; thence with his
 line south 240 poles passing his southwest corner at 120 poles
 to two hickories southwest corner to Alexander Petros survey
 No. 4185; thence west 16 poles to the beginning.

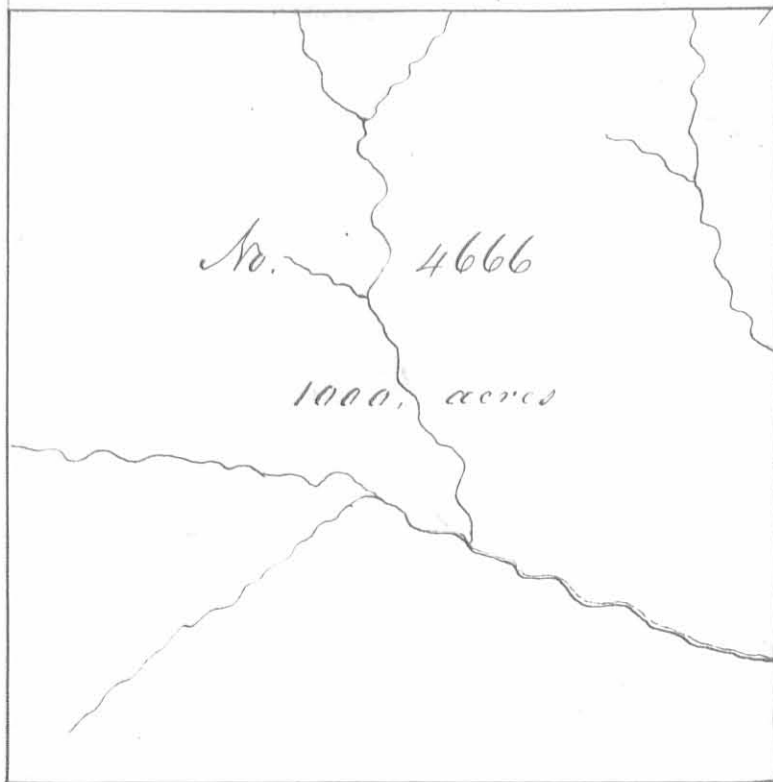
Ignatius Thompson 2
 Thomas Murfin 3
 John Murfin M.k.v.

John Obannon D.S.
 August 20th 1804
 September 18th 1804

No. 4544

1200 acres





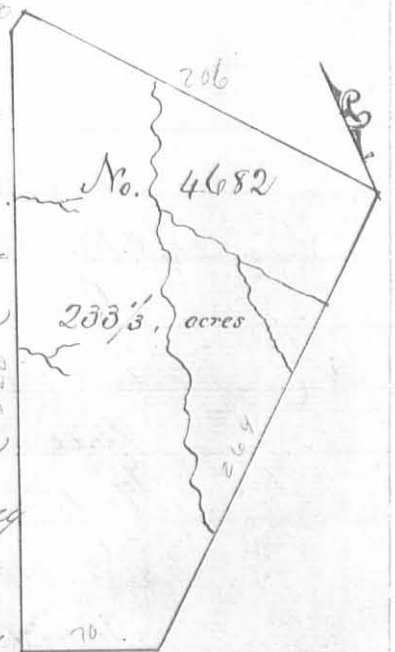
Surveyed for Thomas Prouden for
ap^o 1000 acres of land on a Milita-
ry warrant No. 5047 on the waters
of Darby's creek: Beginning at
three sugar trees westerly corner to
Benjamin Boipeau's Survey No
4658 running S 53 W 400 poles
crossing a branch at 42 one at
172 and one at 250 poles to a
blue ash two lymus and a white
oak on the east side of a branch
thence S. 37. E 400 poles crossing
a large branch at 224 poles

to two white oaks, an ash and elm; thence N. 53. E. 400 poles to a red
oak elm and sugar tree; thence N. 37. W. 400 poles crossing a creek at
162 poles to the beginning.

William Gibson
Henry Stearns
John Boipeau M. L. R.

James Galloway Jun^r D. S.
May 6th 1805
May 7th 1805

Surveyed for William Agun ap^o 233¹/₃ acres of land
on a Military warrant No. 1315 on the waters of Mad
river and Darby's creek: Beginning at two sugar trees
and a large poplar northerly corner to George M^cCre-
die's survey No. 3164 in the line of Philip Claytons sur-
vey No 3164 running with Claytons line and course
thereof N. 38 W. 206 poles crossing a branch of Darby's
creek at 128 poles to a sugar tree red oak and poplar
in the line of the representative of Scwelling Jones survey
No. 4655, thence S 52 W. 8 poles to two beeches an elm
and poplar, corner to Benjamin Stubblefields survey
No. 3223, thence with his line S 25 W. 320¹/₂ Crossing several branches of
Mad river to two sugar trees a lymus and elm southerly corner to said Stub-
blefields survey in the line of Benjamin Boipeau's survey No 4676; thence with
Boipeau's line S. 65 E. 70 poles to a sugar tree easterly corner to said Boipeau's survey in the line
of Philip Slaughters survey No. 3159; thence with Slaughters line, passing his corner and with the
line of said M^cCreddie's survey N. 52 E. 264 poles crossing several branches of Darby's
creek to the beginning.



William Gibson
Henry Stearns
John Boipeau M. L. R.

James Galloway Jun^r D. S.
May 6th 1805
May 7th 1805



Surveyed for Benjamin Boipeau of
800 acres of land on a mili-
tary warrant No 5025 and 133 1/2

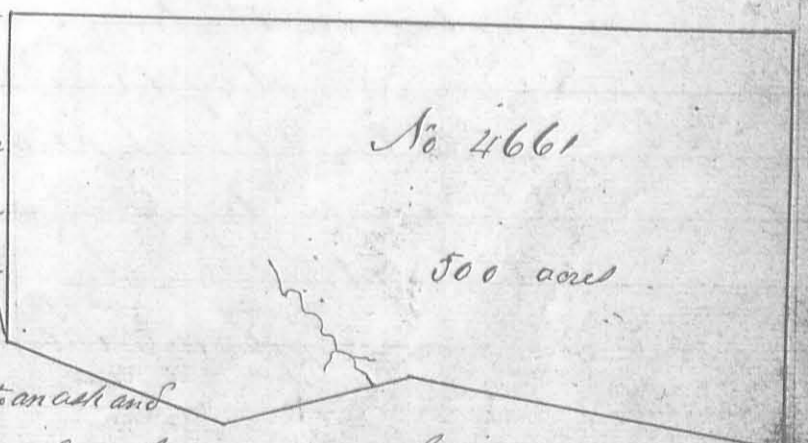
acres on part of warrant No 5023 on
the waters of Mad river and Oastys
creek; beginning at an ash lynn
sugar tree and beech southeast
corner to Holland Nancy survey No.
3221, northeast corner to said Nancy sur-
vey No. 3223 and northwesterly corner to Rich-
ard Kemmors entry No. 4570, running with
Kemmors line N. 53 E. 456 poles crossing a branch
at 50, one at 280, one at 310 and one at 346 poles to a
sugar tree, lynn and beech in the line of Philip Slaughter
survey No. 3159, thence with his line N. 38 W. 84 poles to two

sugar trees westerly corner to said Slaughter survey; thence with another of
his lines N. 52 E. 140 poles to two sugar trees in said line, thence N. 65 W. 156
poles, passing the southerly corner of Benjamin Stubblefield survey at 70
poles and with his line to two sugar trees and a beech in said line and
easterly corner to James McFarlands entry No 4663; thence with his
line S. 69 W. 353 poles crossing a branch at 142 poles to two beeches and
a sugar tree corner to said McFarlands survey and in the line of Thomas
Parkers survey No. 4497, thence with his line S. 21 E. 40 poles crossing a
branch to three beeches and a red oak southeast corner to said Parker
survey, thence with another of his lines S. 69 W. 80 poles crossing a branch
to two ashes, a beech, red oak and sugar tree in said line and Northeast
corner to said Nancy survey No. 3221; thence with said line S. 21 E. 320 poles
crossing a branch at 20 one at 100 and one at 242 poles to the beginning.

William Gibson
Army Survs 3 C.C.
John Boipeau Mkr.

James Galloway Junr D.S.
May 8th 1805
May 7th 1805

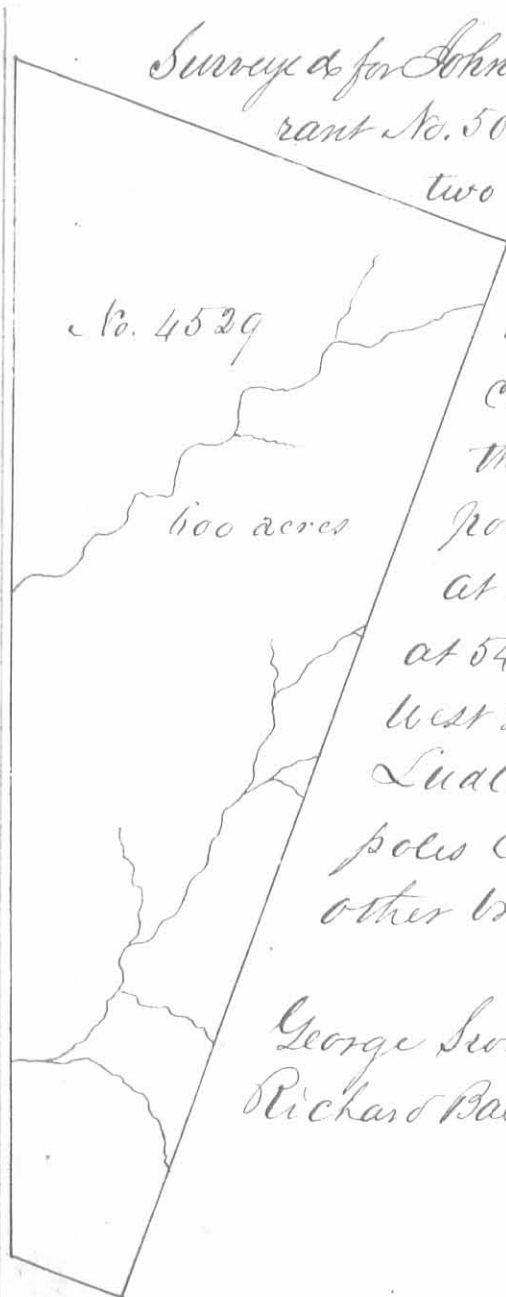
Surveyed for Thomas Threalt 500 acres of land on
part of a Military warrant No 2050 the waters of Mad river
Beginning 34 poles N. 15 E from the Southeastly corner of Sam-
uel Davis's survey No 3216 at a beech and buckeye, run-
ning S. 55 E. 120 poles to a beech and sugar tree; thence
East 100 poles crossing a branch at 80 poles to a
beech and dogwood, thence S. 65 E. 200 poles to a
sugar tree and poplar; thence N. 15 E. 27 poles to an ash and
beech, thence N. 75 W. 408 poles to an ash and sugar tree; thence S. 15 W. 170 poles to the beginning



Solomon M Collock
John Ward
C.C. + Mkr.

James Denny D.S.
June 16th 1806
September 3rd 1806

Surveyed for John Cole 600 acres of land on part of a Military warrant No. 5041 on the waters of the big Miami; beginning at two black oaks in Ludlow's line Northwest corner

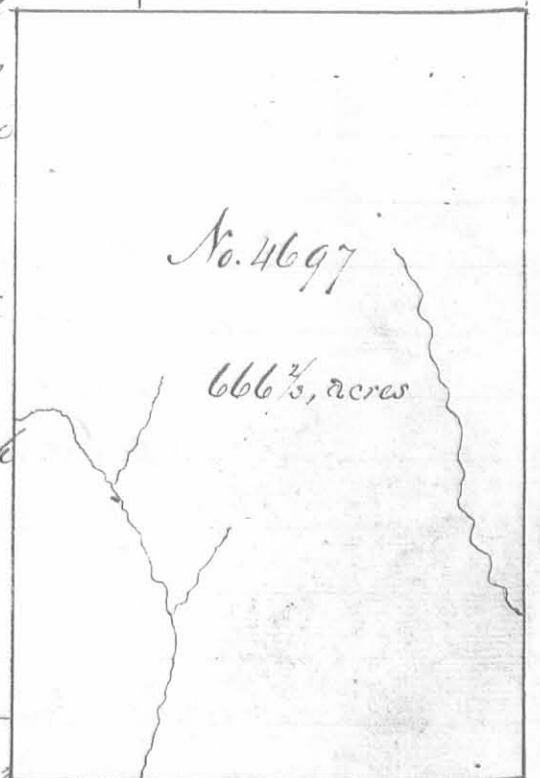


to Ezekiah Morton's survey No. 4498 running with his line East 163 poles to three white oaks corner to Alexander S Dandridge's survey No. 4478 thence with his line and course thereof North 580 poles crossing a branch at 68 one at 88 and one at 140, one at 276, one at 364 one at 370 and one at 548 poles to a sugar tree and Ironwood, thence West 280 poles to two bare oaks one marked I, G in Ludlow's line, thence with said line S. 20. E 620 poles crossing a branch at 270 poles and several other branches to the beginning.

George Swope 3
Richard Paldock 3 66 m.k.r.

James Galloway Junr D.C.
September 19th 1804
September 26th 1804

Surveyed for Peter Pelham 666 $\frac{2}{3}$ acres of land on a Military warrant No. 4870 on the waters of Darby's Creek: Beginning at an elm sugar tree and red oak southerly corner to John Holmes survey No. 4263 and in the line of Thomas Browder Junr's survey No. 4661 running with Holmes line N. 38. W. 400 poles crossing a branch at 86 poles to a sugar tree and creek westerly corner to said Holmes survey, thence S 52. W. 207 poles to a hickory elm and sugar tree, thence S. 38. E. 400 poles crossing a large branch at 212 poles to two ashes and a sugar tree in the line of Duncan McArthur's survey No. 4699, thence with his line passing his corner and crossing the large branch at 68 poles to the beginning.



Alexander Kerr 3
James Stephens 3 66
Joshua Sharp m.k.r.

James Galloway Junr D.C.
November 19th 1805
December 14th 1805



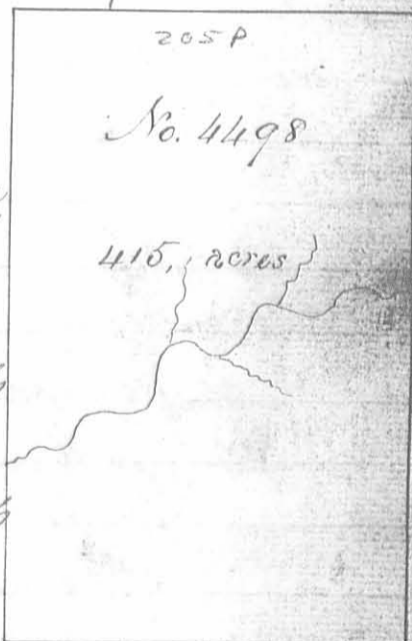
Surveyed for Thomas Parker
 492 acres of land on part of a military
 warrant No. 732 on the waters
 of Mead river. Beginning at two
 black oaks a red oak and cherry
 tree Northwest corner to Holland
 Hancey Survey No. 3221 running

N. 69 E 400 poles crossing a branch at 24, one at 122 and one at
 338 poles to three beeches and a red oak; thence N. 21. W. 200 poles
 crossing a branch at 28, one at 96 and one at 174 poles to three su-
 gar trees; thence S. 69. W. 308 poles crossing a branch at 34 and
 one at 116 poles to three elms; thence south 40 poles to an elm
 ash and burr oak; thence N. 75. W. 64 to a white oak and hick-
 ory; thence S. 69 W. 24 poles to two white oaks and a hickory
 thence S. 21. E. 200 poles to the beginning.

Solomon McCulloch 3
 George McCulloch 366
 William McCulloch Junr M.R.V.

James Denny S.S.
 April 12th 1805
 April 28th 1806

Surveyed for Rezekiah Weston 415 acres of
 land on part of a Military warrant No. 660 on
 the waters of Big Miami. Beginning at a large
 white oak and beech marked INDDM.S.T. the
 beginning corner to Alexander S Sandridges
 survey No. 3220 running West, 205 poles cross-
 ing a branch at 106 and at 140 poles to
 two black oaks; thence south 324 poles cross-
 ing a branch to a black oak and white
 oak; thence East 205 poles to a black
 oak, thence North 324 poles to the beginning.



Solomon McCulloch 3
 James Kerr 3 C.C. & M.R.

James Denny S.S.
 June 16th 1806
 September 2nd 1806



No. 4609

888 $\frac{2}{3}$ acres

Surveyed for Nathaniel Tyler heir at law to John Tyler dec^d 888 $\frac{2}{3}$ acres of land on part of a Military War- rant No. 3301 on the waters of Peaches Creek: Beginning at a Stake in a prairie southwesterly comes to said Ty- lers survey No 4608 running with the line of the said survey N. 52 E. 296 poles to two bur Oaks; thence S. 38. E 556 poles to two elms and a hickory thence S. 52. W. 256 poles to a black walnut elm and bur oak, thence N. 38. W. 556 poles to the beginning.

David Sroufe

Samuel Gallaway $\frac{3}{3}$ C. C.

Williams Township W. Va.

James Gallaway D.S.

November 15th 1807December 31st 1813

Surveyed for Samuel Finley, James Denny ap^{ts} and John Barrett 500 acres of land on part of three Military warrants in the following proportion viz^d Finley 235 acres on Warrant No. 1450, Denny 215 acres on Warrant No. 107 and Barrett 50 acres on Warrant No. 5067 on the waters of Mad river; beginning at a white oak sugar tree and two hickories southeast cor- ner to Augustine S Smith's survey No. 3229 running S. 69 W. 281 poles with Smith's line to an elm, hickory and red oak, thence S. 21. E. 310 poles to a stake in the line of Gabriel Petersens survey No 4534, thence with his line N. 69 E. 61 poles to a stake, thence N. 21. W. 40 poles to a stake, thence N. 69. E 180. poles to an elm and white oak; thence S. 21 E. 40 poles to two elms, thence N. 69 E. 40 poles to a white oak and two dogwoods. Southwest corner to Benjamin Stubblefields survey No. 3231 thence with his line N. 21 W 310 poles to the beginning.

John Barrett

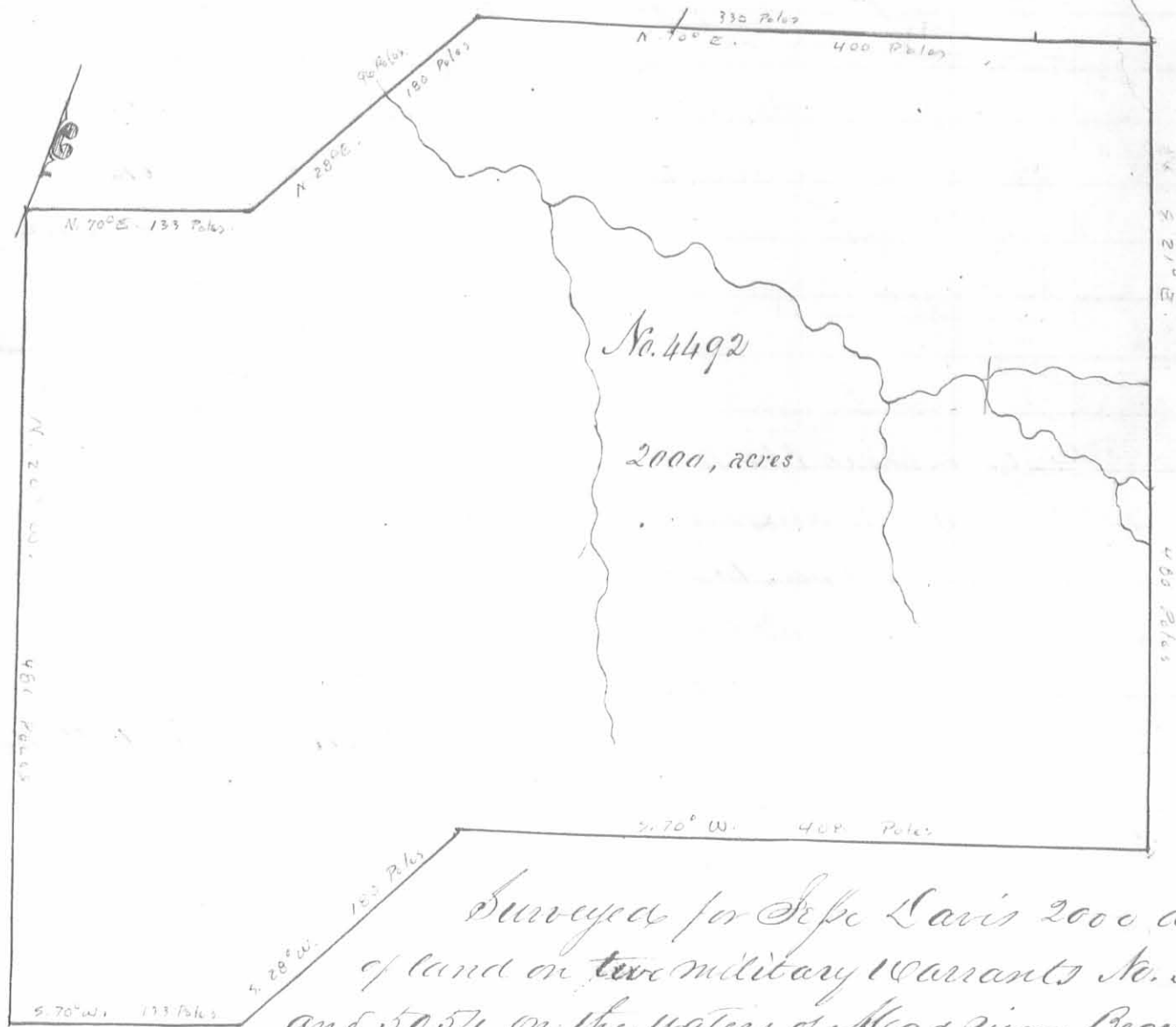
James Thompson $\frac{3}{3}$ C. C. W. Va.

No. 4958

500. acres

James Denny D.S.

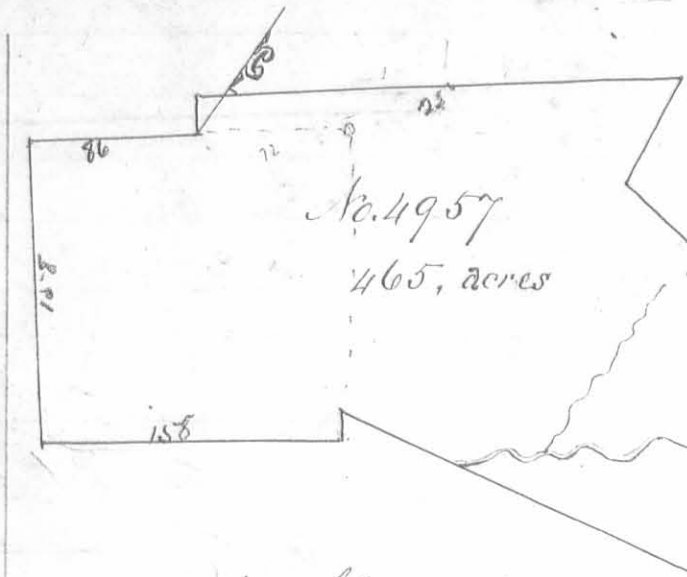
June 20th 1806September 2nd 1806



Surveyed for Sepe Davis 2000 acres of land on ~~two~~ military warrants No. 5053 and 5054 on the waters of Mead river: Beginning at two white oaks southwesterly corner to Thomas Northingtons survey No. 4479 and in the line surveyed by Sudlow, running with Northingtons line N. 70 E. 133 poles to three hickories; thence N. 28 E. 180 poles crossing a branch at 96 poles to three burr oaks thence N. 70 E. 400 poles passing a corner at 330 poles to two sugar trees and two Ironwoods in the line of Augustin P Smiths survey No. 3225; thence with his line S. 21 E. 480 poles crossing several branches to a hickory red oak and ash; thence S. 70 W. 408 poles to two burr oaks; thence S. 28 W. 180 poles to two hickories; thence S. 70 W. 133 poles to two black oaks in Sudlows line; thence with said line N. 20 W. 480 poles to the beginning.

John Parrett
John Thomas Clerk.

James Denny L.S.
May 1st 1805
September 1st 1806



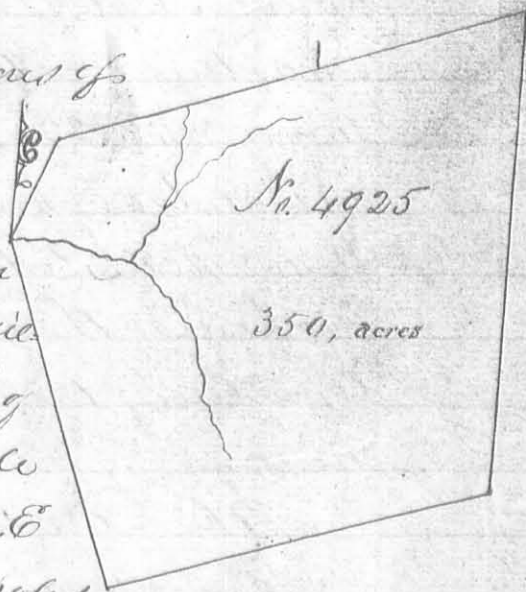
Surveyed for James Denny ap^{ee} 465 acres of land on part of two Military Warrants vizt 365 acres on No. 107 and 100 acres on No 4892 on Mad river: Beginning at a sugar tree S. 60. W. 72 poles from the Northeastly corner of Samuel McCulloch's survey No

4495 running S. 60. W. 86 poles to two hickories and two red oaks Southwestly corner to said survey, thence S 30 E 158 poles to a stake on the side of a bushy ridge, thence N. 60 E. 158 poles crossing Mad river 160 poles to two dogwoods and two elms; thence N. 50. E 150 poles crossing three Spring drains to a white oak two dogwoods and a mulberry in the line of James Calderwoods survey, N. 31. 38; thence with his line N 75 W 250 poles crossing the river at 80 poles to seven small white oaks from one root, southwest corner to said Calderwoods survey; thence with another of his lines north 60 poles to an elm and burr oak; thence S 59 W. 252 poles to a black oak; thence S 30. E. 110 poles to the beginning.

George McCulloch
Solemn McCulloch 3 Cts. & M. & R.

James Denny D.S.
August 30th 1806
September 2nd 1806

Surveyed for James Denny ap^{ee} 350 acres of land on part of a military Warrant No. 107 on the waters of Mad river, beginning at a stake in the line surveyed by Suddow between the United States lands and the Virginia Military district where it crosses a branch of Kings Creek between the 25 and 26 mile tree marked on said line running N. 20. E 160 poles to a stake; thence N. 70 E 250 poles crossing a branch at 163 poles to a white oak and hickory; thence South 250 poles to a stake in the edge of a barrow, thence S 70 W 202 poles to a black oak and two hickories in Suddow's line; thence with said line N. 25 W. 192 poles to the beginning.



John Barnett
James Thomas 3 Cts. & M. & R.

James Denny D.S.
August. 30th 1806
September 2nd 1806