

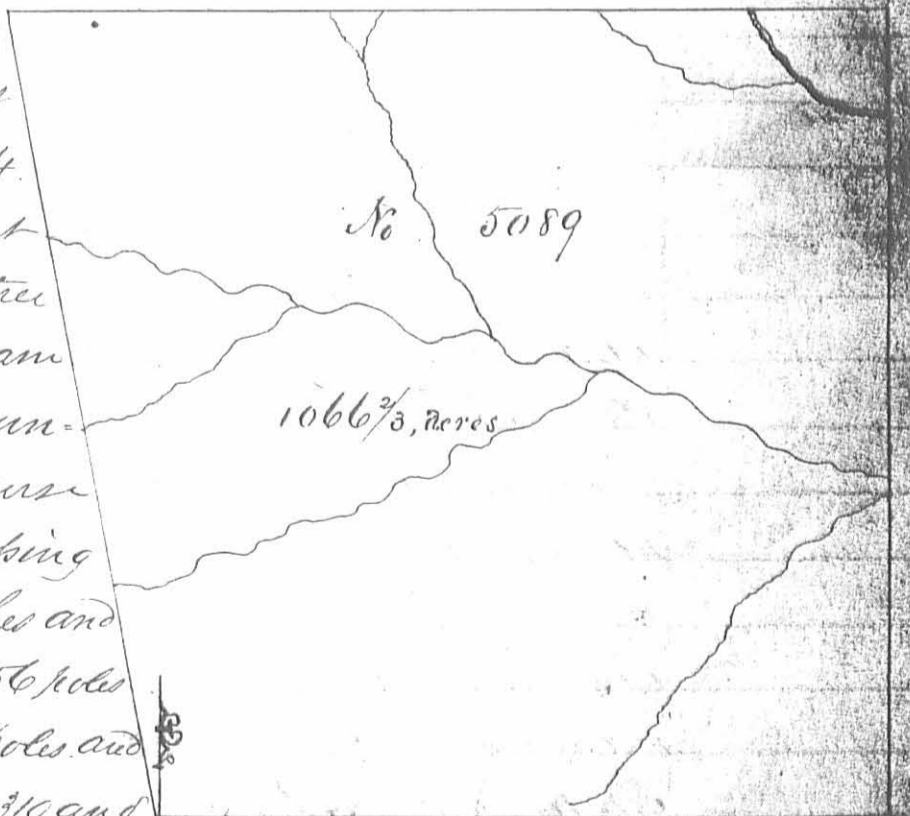
Surveyed for Robert Means  
 ap<sup>x</sup> 1050 acres of land on  
 part of a Military War-  
 rant No 5109 on the waters  
 of Mill Creek: Beginning  
 at a large Black Walnut and  
 elm northwesterly corner to  
 Thomas Holt's survey No. 2674  
 in the line of William Cochran's  
 survey No 3436 running with  
 Holt's line S 20 E. 325 poles crossing  
 several small branches to two hick-  
 oris and a lynn southeasterly

corner to said Holt's survey; thence East 440 poles to two beeches, a sugar tree and  
 large white oak, thence North 408 poles, crossing a branch at 75 and at 136  
 and one at 314 poles to a hickory ash and lynn; thence S. 80 W. 507 poles crossing  
 several branches and passing the southeasterly corner of said Cochran's sur-  
 vey and with his line to the beginning.

Colin McCollum <sup>3</sup>  
 James McAnan <sup>3</sup> C.C.  
 John McDonald M.h.r.

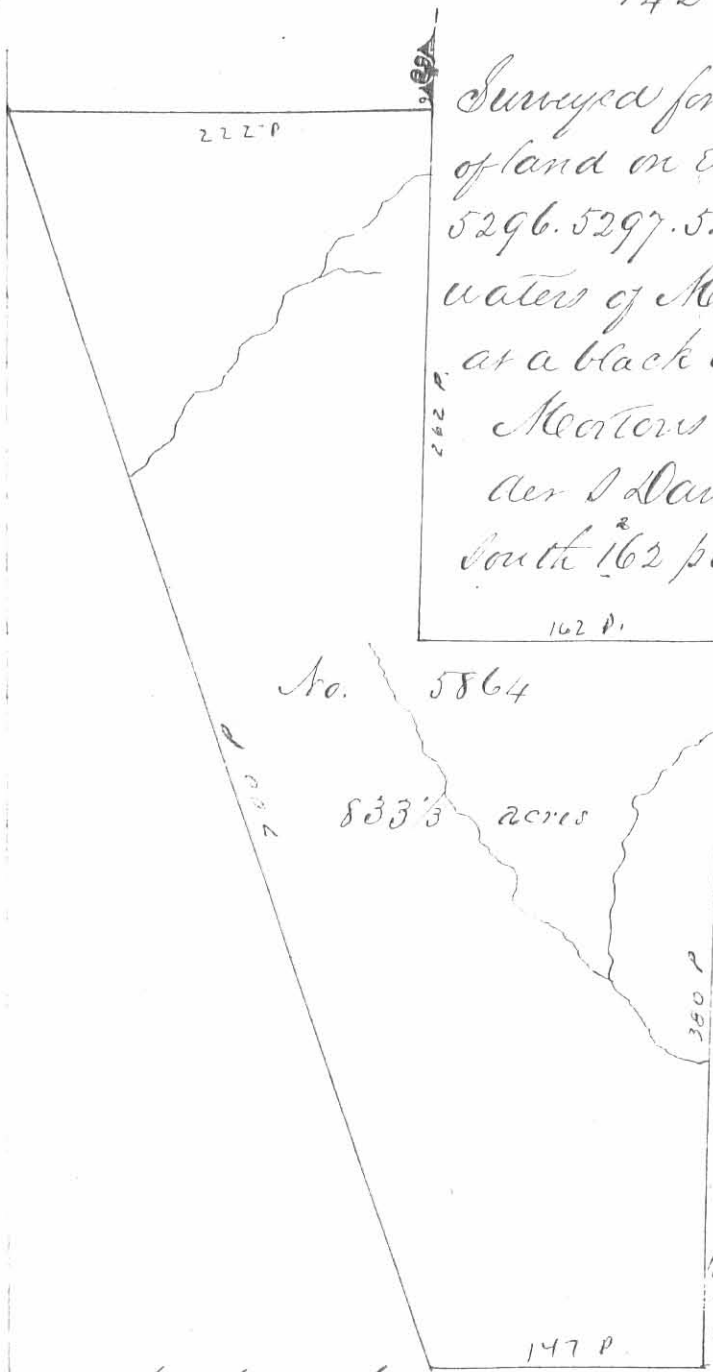
Duncan McArthur D.S.  
 February 15<sup>th</sup> 1807  
 April 24<sup>th</sup> 1807

Surveyed for John McDonald  
 ap<sup>x</sup> 1066<sup>2</sup>/<sub>3</sub> acres of land on part  
 of a military Warrant No. 4784  
 on Mill Creek: Beginning at  
 a bur oak ash and a sugar tree  
 southeasterly corner to William  
 Cochran's survey No. 3436 run-  
 ning with his line and course  
 thence N. 10 W. 444 poles crossing  
 several branches to two beeches and  
 a sugar tree; thence East 456 poles  
 crossing a branch at 164 poles and  
 one at 193 poles and one at 310 and  
 Mill Creek at 390 poles to a sugar tree, beech and hickory; thence  
 South 418 poles passing the northwest corner of Strother Jones survey  
 No 4210, at 18 crossing the creek at 56, a branch at 242 and one at 252 poles to a  
 hickory ash and lynn southeasterly corner to Jones survey, thence S. 87 W. 378 poles to the beginning.



David Sharp <sup>3</sup>  
 William Henry <sup>3</sup> C.C.  
 Joseph Maynes M.h.r.

Duncan McArthur D.S.  
 November 24<sup>th</sup> 1807  
 December 27<sup>th</sup> 1807



Surveyed for Thomas M. Bailey a piece of 833 1/3 acres of land on eight Military warrants No. 5295 5296 5297 5298 5312 5313 5314 and 5322 on the waters of Koad river, and big Miami; beginning at a black oak southeast corner to Nezekiah Meenters survey No 4498 in the line of Alexander S. Canardges survey No 4477 running South 162 poles crossing a branch to two hickories and a black oak south west

corner to said Canardges survey thence with another of his lines East 162 poles to two sugar trees and a red oak in said line; thence South 380 poles crossing a branch at 46 and one at 220 poles to three black oaks; thence West 147 poles to two hickories in the line run by Israel Sudaon between the United States and the Military lands; thence with said line N. 20 W 700 poles crossing a branch to

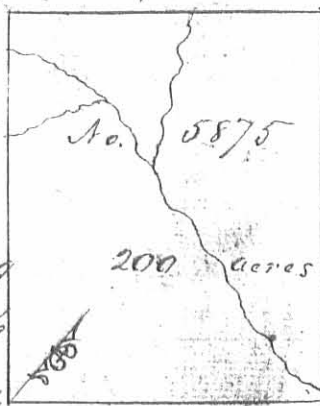
a black oak and hickory in said line and southwest corner to Byrd Bewitt survey No. 5045; thence with his line passing his corner and with the line of said Meenters survey East 222 poles to the beginning.

Richard Balouch 3  
George Srouf 3  
Samuel Galloway M.k.r.

James Galloway Sur. G.S.  
June 2<sup>nd</sup> 1808  
June 17<sup>th</sup> 1808

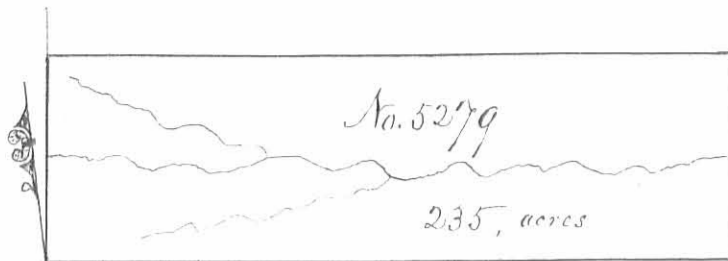
Surveyed for John Baird a piece of 200 acres of land on part of a Military warrant No. 546 on the waters of Otter creek:

Beginning at two beeches and an ash westerly corner to William Croghans survey No. 4689 in the line of the representative of Sewelling Jones survey No 4655 running with Jones line and course thereof N. 38 W 200 poles crossing a branch at 140 poles and one at 180 poles to three Ironwoods and a beech; thence N. 52 E. 160 poles crossing a branch at 90 poles to two beeches and a sugar tree west corner to Richard Call survey No. 4810; thence with his line S. 38 E. 200 poles crossing a branch at 196 poles to two blue ashes and a hickory corner to said Call's survey in the line of said Croghans survey; thence with his line S. 52 W. 160 poles to the beginning.



Miriam Gilson 3  
Henry Sturms 3  
John Puffer M.k.r.

James Galloway Sur. G.S.  
May 22<sup>nd</sup> 1808 (1810)  
June 27<sup>th</sup> 1808 (1810)



Surveyed for David Bradford of  
235 acres of land on a Military War-  
rant No 890 and 35 acres on part of  
No. 1121 on a branch of the south fork

of Dentys creek which heads in or near the south corner of George Meadows  
survey No 1118; beginning at three small bur oaks, southeasterly corner  
to said Bradfords entry No. 5276 and southeasterly corner to said Brad-  
fords survey No. 5276, 5277, 5278 running with the lower line of said  
entry N. 4. E. 108 poles crossing the branch at 54 poles to three white  
oaks on the east corner to said entry; thence S. 80. E. 250 poles to two  
large white oaks and a hickory; thence S. 4. W. 108 poles crossing the  
branch at 54 poles to three bur oaks, thence up on the south side of  
the branch with the barons N. 86. W. 350 poles to the beginning.

Daniel Matthews 3  
James Matthews 3 66  
James Minery, M.k.r.

Duncan McArthur D.S.

November 12<sup>th</sup> 1811

April 13, 1812

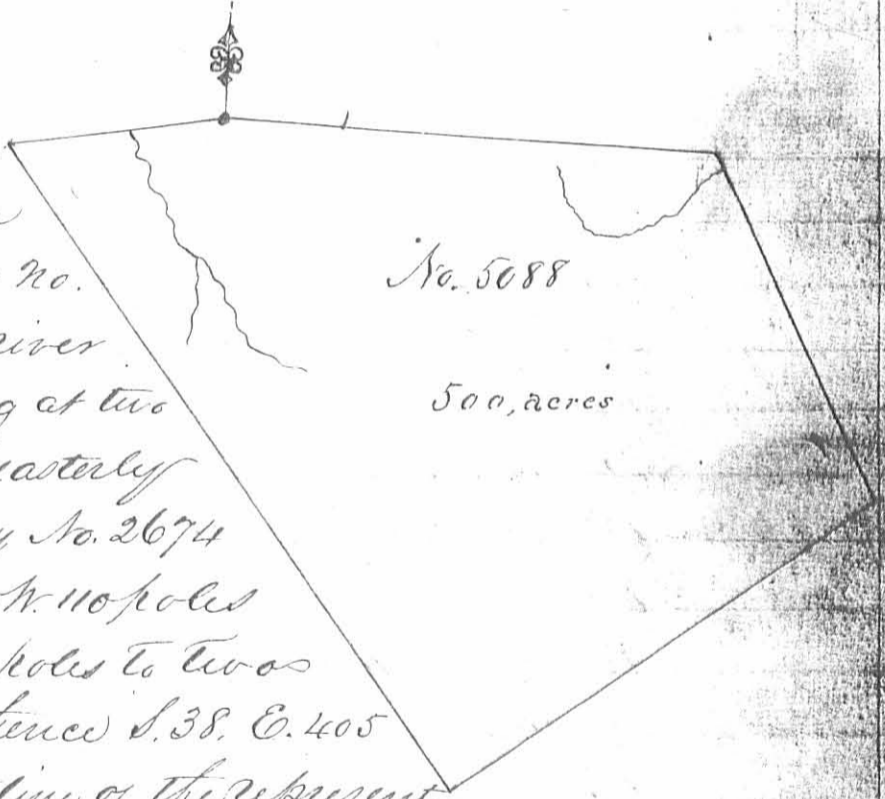
Surveyed for John McDon-  
ald of 500 acres of land on  
part of a Military Warrant No.  
4784 on the waters of Mead river  
and Mill creek; beginning at two  
hickories and a lynn southeasterly  
corner to Thomas Hoets survey No. 2674  
running with his line S. 80 N. 110 poles  
crossing a branch at 58 poles to two  
hickories and a beech; thence S. 38. E. 405  
poles to a sugar tree in the line of the represent-  
ative of Sewelling Jones survey No. 4653, thence with said line  
N. 52. E. 265 poles to a sugar tree, ash and Ironwood, northerly cor-  
ner to said Representative's survey; thence N. 28. W. 200 poles to two  
beeches and a sugar tree on the north side of a branch in the line  
of Robert Moans survey No. 5091; thence with his line west 250  
poles to the beginning.

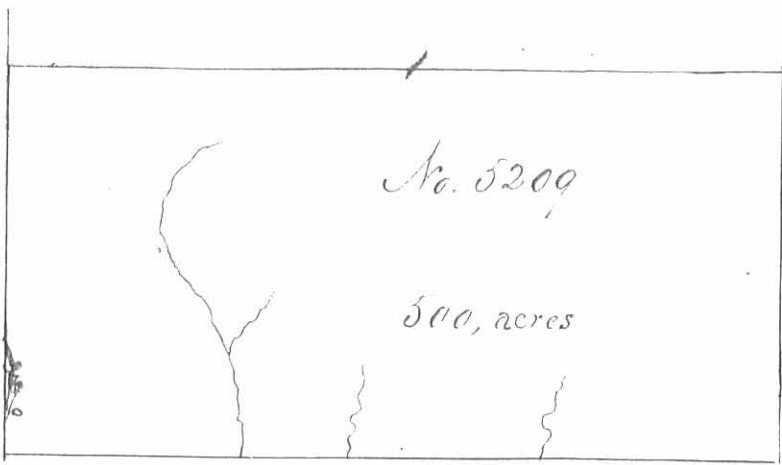
Isaac Zane 3  
William Henry 3  
Stewart Hatfield M.k.r.

Duncan McArthur D.S.

November 28<sup>th</sup> 1808

December 27<sup>th</sup> 1808





Surveyed for Benjamin Biggs  
500 acres of land on east of a mili-  
tary warrant No. 225 on the waters  
of Mill creek: Beginning at an  
ash hickory and buckeye Northwest  
corner to Brother Jones survey No 4210  
running north 200 poles to an ash

beech and sugar trees, thence East 400 poles to three beeches; thence South  
200 poles to two beeches and two sugar trees Northeast corner to said Jones  
survey; thence with his line West 400 poles to the beginning.

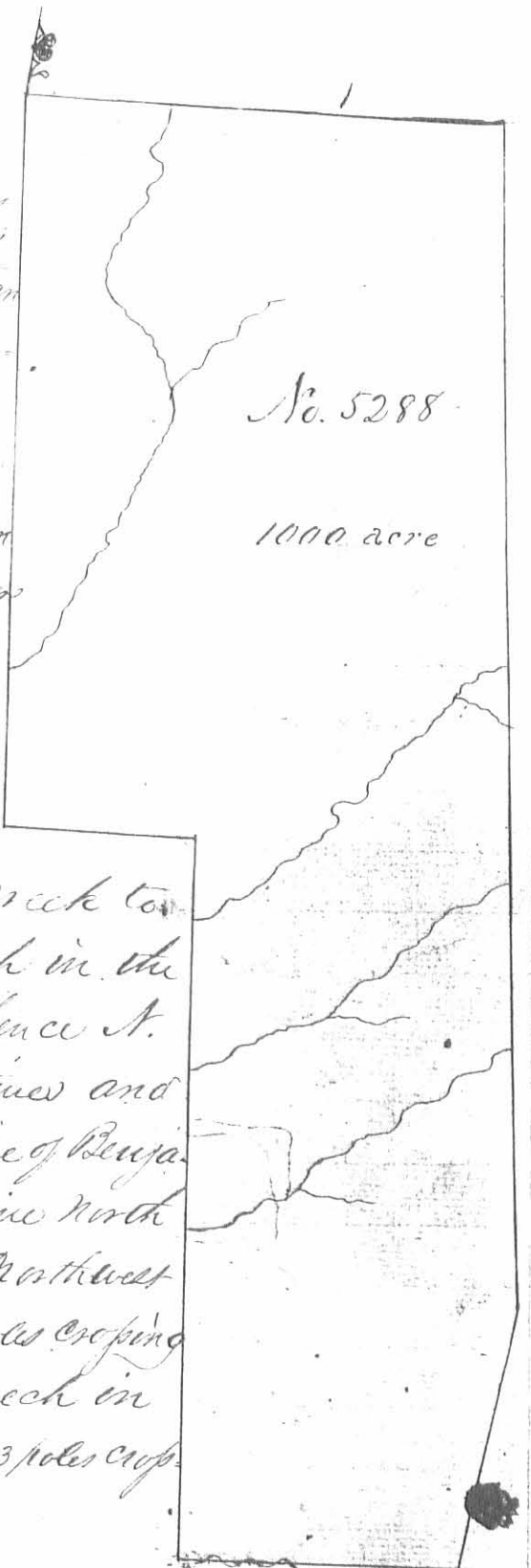
Daniel Sharp  
William Henry C.C.  
Joseph Hayes M.K.S.

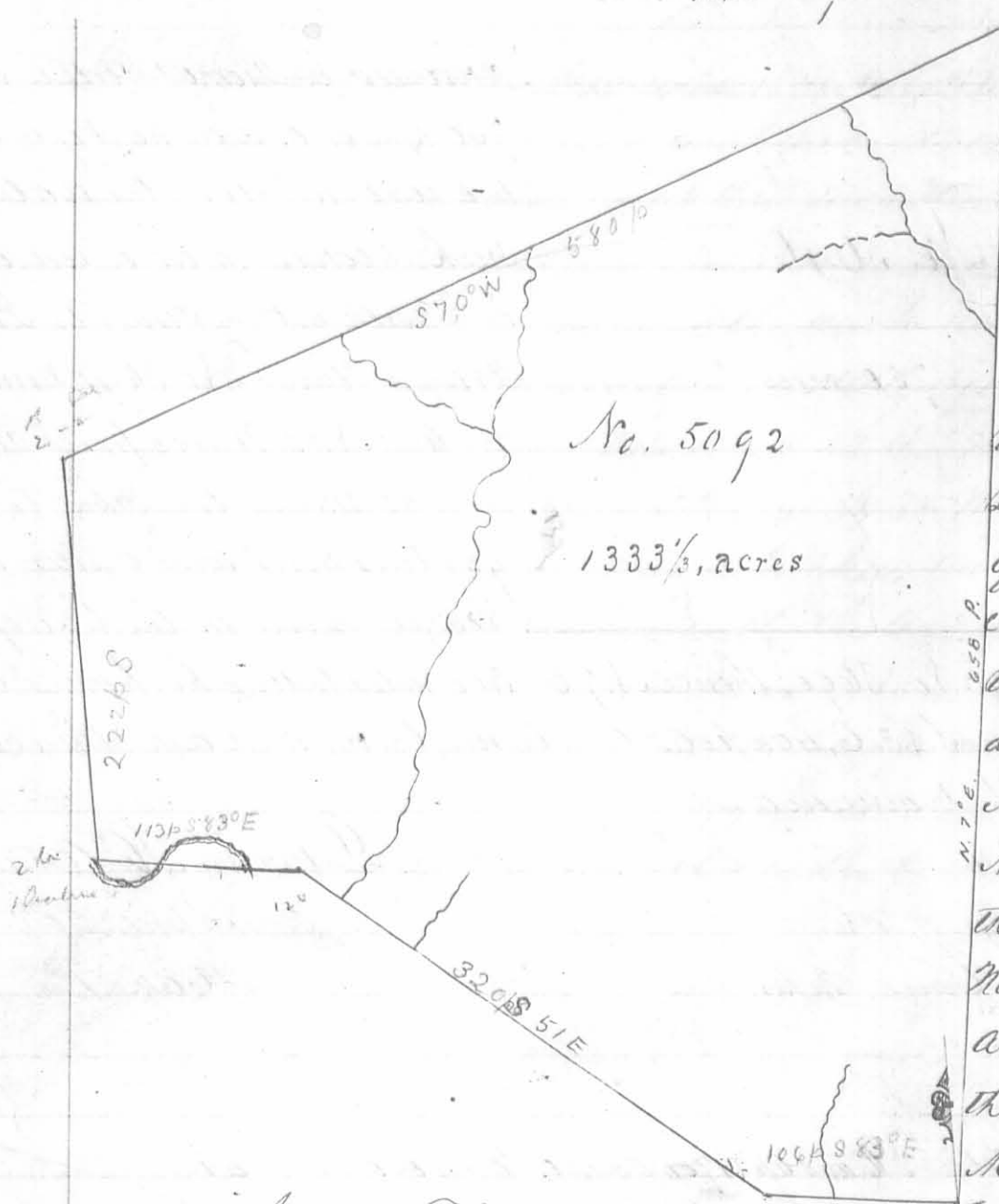
Lincoln M. Arthur D.S.  
November 23<sup>rd</sup> 1808  
May 11<sup>th</sup> 1809

Surveyed for Thomas Boynton 1000 acre of land on  
part of a military warrant No 19 on Mill creek.  
beginning at two hickories two sugar trees and an  
ironwood north easterly corner to Charles Hume-  
phreys survey No 3472 running with his line  
S 10 E. 400 poles to a white walnut beech and  
sugar tree southeasterly corner to said Hum-  
phreys survey in the line of Daniel Pedingers  
survey No 842; thence with his line N. 50 E  
105 poles to a sugar tree and two large  
ashes northeast corner to said Pedingers sur-  
vey; thence with another of his lines S. 10. E  
395 poles crossing several branches of Mill creek to  
three hickories on the north side of a branch in the  
line of John McDonald survey No. 5089, thence N.  
83. E. 153 poles crossing a branch several times and  
the creek at 92 poles to three beeches in the line of Benja-  
min Biggs survey No. 5209, thence with his line North  
154 poles to an ash beech and two sugar trees Northwest  
corner to said Biggs survey; thence N. 13. W. 640 poles crossing  
several branches to a buckeye sugar tree and beech in  
the Indian Boundary line; thence with said line S. 80. W. 263 poles cross-  
ing a branch to the beginning.

Isaac Zane  
William Henry C.C.  
Stewart Hatfield M.K.S.

Lincoln M. Arthur D.S.  
November 23<sup>rd</sup> 1808  
May 11<sup>th</sup> 1809





Surveyed for Robert Means  
 of 1333 1/3 acres of land on  
 a military warrant No 5110  
 on Mill creek. Beginning  
 at two buckeyes an ash  
 and lyma Northeastly cor-  
 ner to James Gallaway Junr  
 survey No. 4813 in the line  
 of the representatives of Sea-  
 welling Jones survey No. 4815  
 running with said line  
 and with the line of Peter  
 Manifold survey No. 2832  
 N. 7 E. 658 poles passing  
 the Northwest corner of survey  
 No 4815 at 238 poles crossing  
 a branch at 480 and passing  
 the Northwest corner of said  
 Manifold and Southwest  
 corner of Andrew Tortous survey No. 2982 at 638 poles to three sugar trees and  
 a beech in the line of said Tortous survey; thence S. 70 W. 580 poles crossing  
 several branches to two buckes and two sugar trees North East corner  
 to Strother Jones survey No 4210, thence with his line South 222  
 poles to two buckeyes and a Hackberry near the creek in the line of  
 Robert Vances survey No. 4095; thence with his line S. 83. E. 113 poles  
 crossing mill creek twice to a beech and sugar tree; thence S. 57. E. 320  
 poles crossing a branch at 28 and on at 75 poles to an elm, sycamore  
 and white oak in the line of said Gallaways survey; thence with  
 said line S. 83. E. 106 poles crossing a branch at 37 poles to the beginning

David Sharp  
 William Henry  
 Joseph Haynes M.k.r.

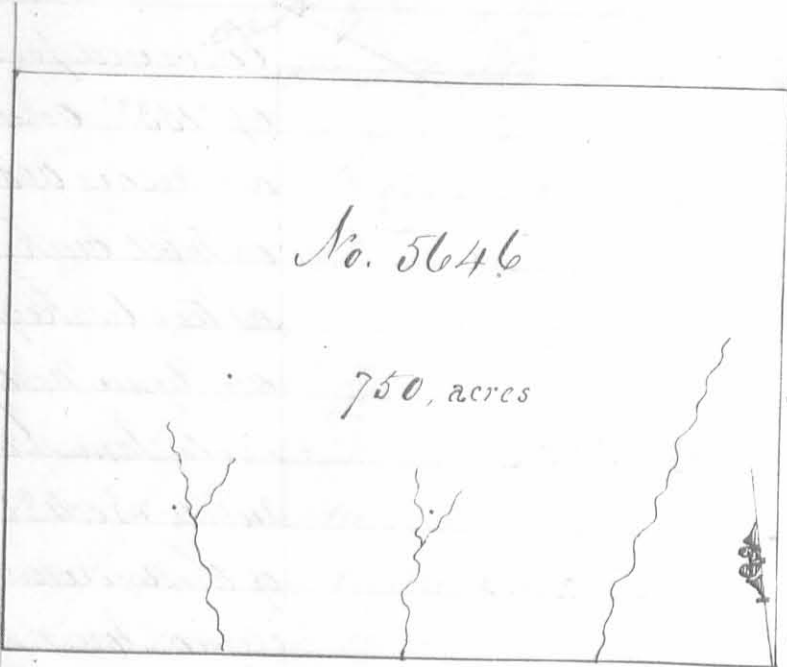
Duncan McArthur D.S.  
 November 26<sup>th</sup> 1808  
 May 12<sup>th</sup> 1809

Surveyed for Walter Dumas of 50 acres of land on part of a military warrant No.  
 5347 on the waters of Mad river. Beginning at two red oaks and two hickories  
 Westly corner to James Conny survey No. 4957, thence S 60 W 100 poles to a white  
 oak and red oak, thence S. 30 E. 80 poles to a black oak white oak and  
 stake, thence N. 60. E. 100 poles to three white oaks in the line of said Conny  
 survey; thence with said line N. 30 W. 80 poles to the beginning.

No. 674  
 50 acres

John John  
 Jonathan Piper  
 George D Roberts M.k.r.

Wm Dyer D.S.  
 August 29<sup>th</sup>  
 September 18<sup>th</sup>



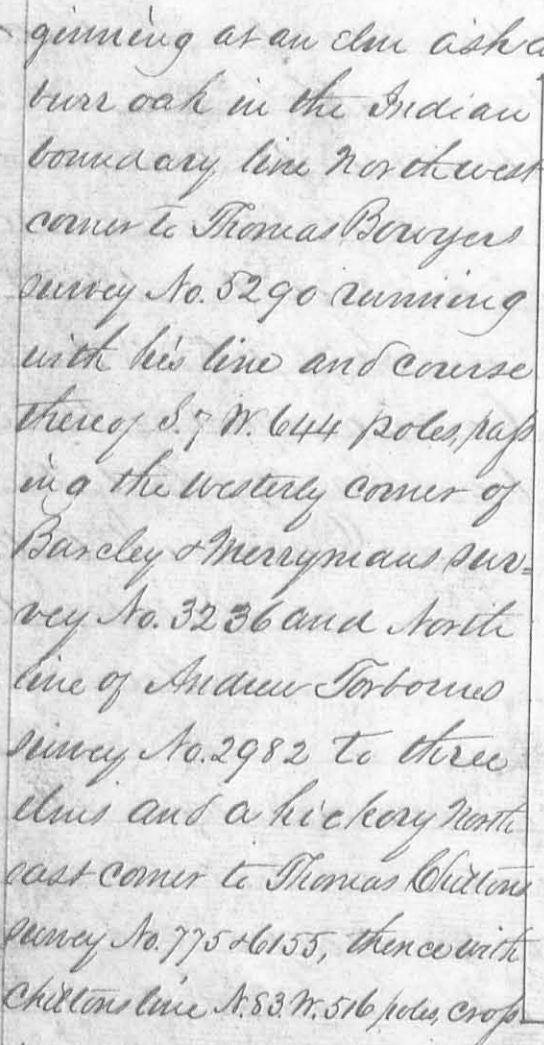
Surveyed for Thomas Worthington Apr<sup>1</sup>  
 750 acres of land on part of a Military  
 warrant No. 2211 on the waters of Coker  
 Creek: Beginning at a red oak, white  
 oak northeasterly corner to Fafony  
 Frazer survey No 3691 running with  
 his line N. 83. W 400 poles crossing  
 several small branches to two su-  
 gar trees northwest corner to said  
 Frazer survey in the line of said

Frazer survey No. 3690; thence N. 7. E. 300 poles to two hickories and a  
 lynn; thence S. 83. E. 400 poles to a lynn, beech and ash; thence S. 7. W.  
 300 poles to the beginning.

David Sharp  
 Samuel Sharp  
 James Monroe M.k.r.

Duncan McArthur D.S.  
 April 20<sup>th</sup> 1808  
 May 12<sup>th</sup> 1809

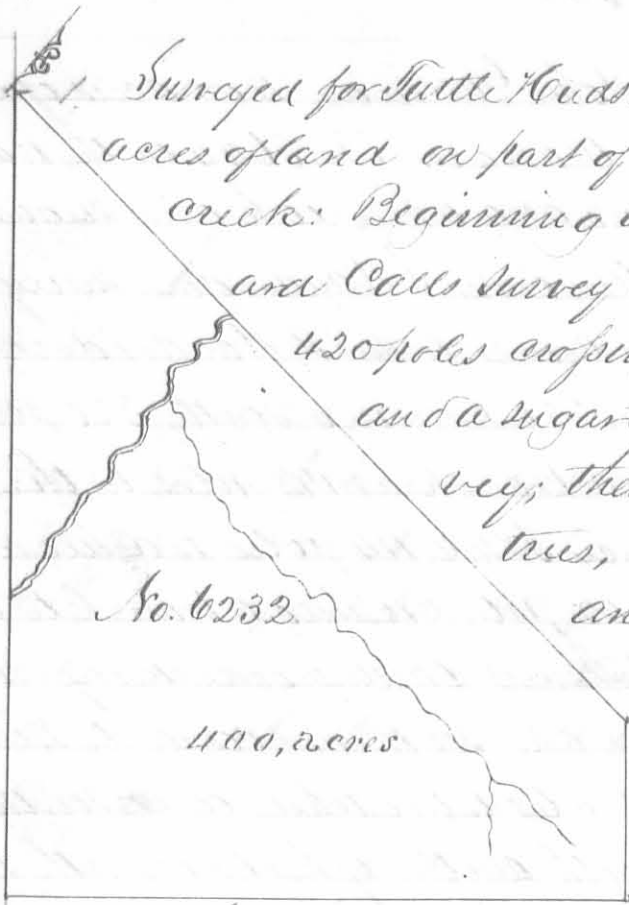
Surveyed for Robert Means Apr<sup>1</sup> 1700 acres of land on a military  
 warrant No. 5478 and 1500 acres on part of No. 5387  
 between Miller Creek and Coker Creek: Be-



ginning at an elm ash and  
 burr oak in the Indian  
 boundary line northwest  
 corner to Thomas Boyers  
 survey No. 5290 running  
 with his line and course  
 thereof S. 7. W. 644 poles pass-  
 ing the westerly corner of  
 Barclay & Merryman's sur-  
 vey No. 3236 and North  
 line of Andrew Fortson's  
 survey No. 2982 to three  
 elms and a hickory north-  
 east corner to Thomas Chilton's  
 survey No. 775 & 6155, thence with  
 Chilton's line N. 83. W. 516 poles, cross-  
 ing several small branches to two birches an elm and sugar tree; thence N. 7. E. 486 poles to a stake in the In-  
 dian boundary line, thence with said boundary line N. 80. E. 542 poles to the beginning.

David Sharp  
 William Henry  
 Joseph Maynes M.k.r.

Duncan McArthur D.S.  
 March 20<sup>th</sup> 1809  
 May 12<sup>th</sup> 1809

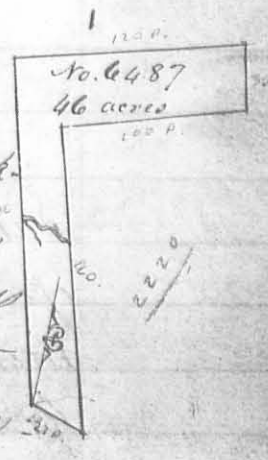


Surveyed for Little Hudson devise to of William Hudson decd 400 acres of land on part of a Military warrant No 5264 on Otter creek: Beginning at three sugar trees northerly corner to Rich- and Calls survey No. 4810 running with his line S. 38. E. 420 poles crossing the creek at 260 poles to two ashes and a sugar tree easterly corner to said Calls sur- vey; thence N. 52 E. 320 poles to three sugar trees, thence N 38 W. 93 poles to two ashes and a buckeye; thence N. 83. W. 350 poles with the line of James Gallaway's sur- vey No 4813, crossing the creek at 294 poles to a lynn ash and buckeye southwest corner to said Gallaway's survey; thence N. 79 W. 107 poles to the beginning.

Alexander Kerr 2  
 James Stephens 3 C.C.  
 Joshua Sharp M.k.r

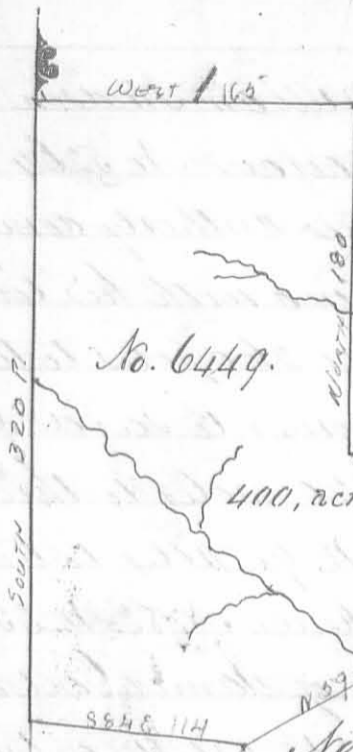
James Gallaway Junr S.S.  
 June 4<sup>th</sup> 1809  
 August 29<sup>th</sup> 1809

Surveyed for James Gallaway Junr Apr 46 acres of land on part of a Military warrant No. 5404 on Mack- a chack a branch of Mad river: Beginning at three black oaks southeasterly corner to Thomas Worthington survey No. 4479 running S. 76 E 27 poles to two white oaks and a hickory southwest corner to Henry De- lays survey No 2220; thence with Delays line N 20 W 160 poles crossing the creek at 100 poles to a stake in a prairie northwest corner to said Delays survey; thence with another of his lines N. 69. E 100 poles to an Elm and sugar tree northeast corner to Delays in the line of Holland Nancy's survey No. 3224; thence with Nancy's line N. 21. W. 36 poles to two white oaks in said line thence S 70 W 120 poles to a white oak in the line of said Worthington's survey; thence with his line S. 20 E. 180 poles crossing the creek to the beginning.



George Srauf 3  
 Richard Balach 3 C.C.  
 William Thom M.k.r.

James Gallaway Junr S.S.  
 December 10<sup>th</sup> 1809  
 January 12<sup>th</sup> 1810

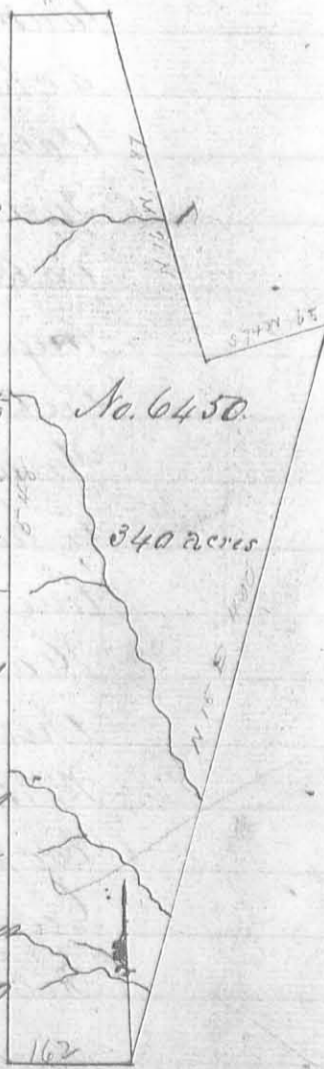


Surveyed for John Galloway 400 acres of land on part of a Military Warrant No. 5644 on the waters of Mead River; beginning at a white oak and sugar tree North east corner to Alexander S Sandridges survey No. 4477 and Southwest corner to said Sandridges survey No. 3220 running south 320 poles crossing a branch at 148 poles to three white oaks thence S. 84. E. 114 poles to a hickory, thence N. 59. E. 252 poles crossing a branch to three elms in the line of James Calderwoods survey No. 3138, thence North 18 poles to a stake southeast corner to William Thom's survey No. 6447; thence West 168 poles to two white oaks southwest corner to said Thom's survey; thence with another of his lines north 180 poles crossing a branch at 76 poles to a poplar and a black walnut corner to said Thom's survey in the line of said Sandridges survey No. 3220, thence with his line West 165 poles to the beginning.

Ebenezer Zane 3  
 Isaac Zane 3 C.C.  
 William Thom m.k.r.

James Galloway Junr D. S.  
 December 1<sup>st</sup> 1809  
 January 30<sup>th</sup> 1810

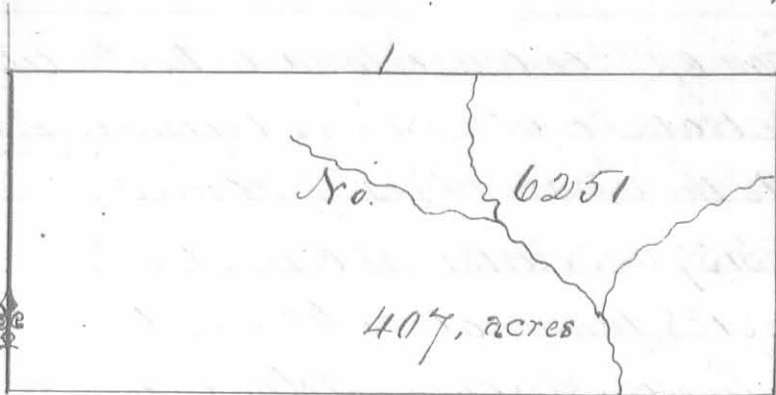
Surveyed for John Galloway 340 acres of land on part of a Military Warrant No. 5644 on the waters of Mead river. Beginning at a beech southwest corner to James Calderwoods survey No. 3137 running with his line N. 15 E. 400 poles crossing a branch at 40 one at 80 and one at 142 poles to two red oaks North west corner to said survey and corner to said Calderwoods survey No. 3139 thence with the line of the last mentioned survey S. 74 N. 60 poles to a dogwood and hickory corner to said survey; thence with another line of said survey N. 16 N. 187 poles crossing a branch to two lymus an ash and red oak in said line; thence West 44 poles to three lymus from one root a hickory and white walnut Northeast corner to Alexander S Sandridges survey No. 3220, thence with his line South 548 poles crossing several branches to three sugar trees in said line; thence East 162 poles to the beginning.



Ebenezer Zane 3  
 Isaac Zane 3 C.C.  
 William Thom m.k.r.

James Galloway Junr D. S.  
 November 20<sup>th</sup> 1809  
 January 30<sup>th</sup> 1810





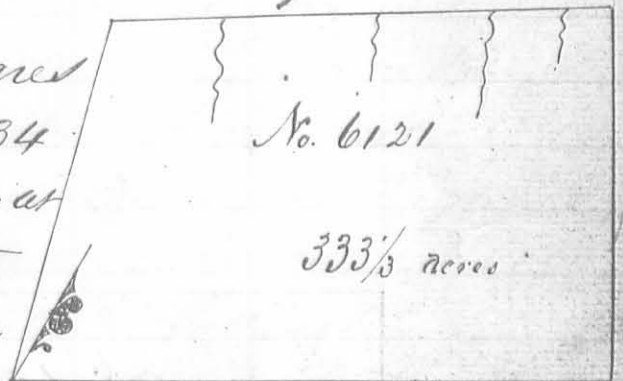
Surveyed for William Evans 407  
acres of land on a Military Warrant  
No. 5528 on the waters of Nois creek.  
beginning at a beech and two  
sugar trees Northwest corner to  
Benjamin Biggs survey No. 5209

running with his line East 400 poles crossing a branch to three beches  
Northeast corner to said Biggs survey; thence North 163 poles  
crossing a branch to two ashes; thence North 400 poles crossing  
a branch at 157 poles to a sugar tree black oak and hickory  
thence South 163 poles to the beginning.

David Sharp 3  
Neal Gun 3 166  
Walter Gun M.k.r.

Duncan McArthur S.S.  
October 16<sup>th</sup> 1809  
December 14<sup>th</sup> 1809

Surveyed for John Morris ap<sup>u</sup> 333 $\frac{1}{3}$  acres  
of land on a Military Warrant No. 5234  
on the waters of Noaa river. Beginning at  
two sugar trees Northwesterly corner to  
David Bradfords survey No. 3136 in  
the line of James Calderwoods survey.



No. 3139 running with Bradfords line N. 58 E. 315 poles to two  
Ironwoods and a beech Northeastly corner to said Bradfords  
survey; thence N. 32 W. 195 poles to two sugar trees two hickories  
a lynn and poplar; thence S 56 W 260 poles crossing a branch at  
18 one at 60 one at 120 and one at 200 poles to two poplars a sugar  
tree and beech in the line of said Calderwoods survey; thence with  
said line S. 16 E. 195 poles to the beginning.

Neal Gun 3  
Christopher Popejoy 3 166  
Walter Gun M.k.r.

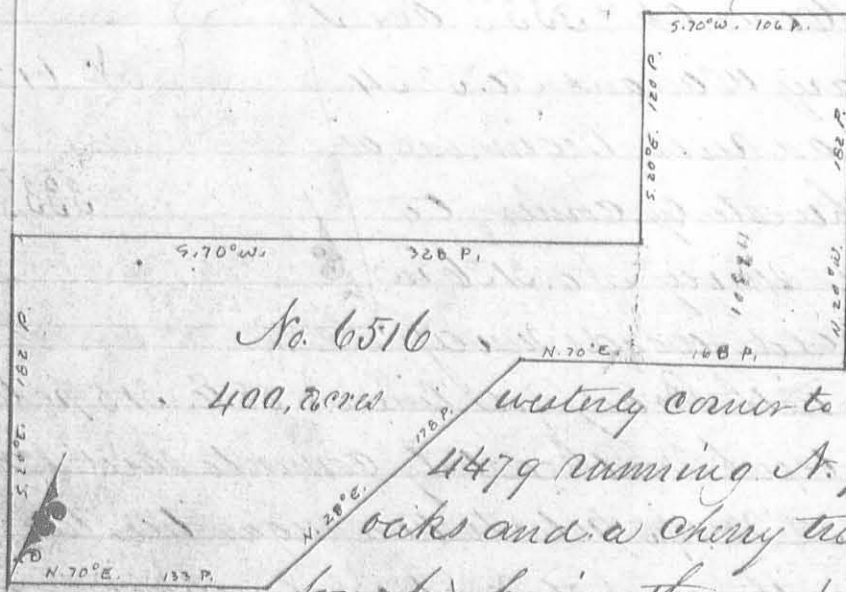
Duncan McArthur S.S.  
November 15<sup>th</sup> 1809  
December 14<sup>th</sup> 1809

Surveyed for William Thom ap<sup>pr</sup> 200 acres of land on two military warrants No 5664 on the waters of Mead river; beginning at a beech southwest corner to the representatives of James Calderwoods survey No. 3137 and Northwest corner to said Calderwoods survey No 3138 running west 62 poles to three sugar trees in the line of Alexander Standridge survey No. 3220; thence with his line south 48 poles to an Elm Lynn and sugar tree southeast corner to said Standridge survey; thence with another of his lines West 104 poles crossing a branch to a poplar and black Walnut in said line; thence South 180 poles crossing a branch at 104 poles to two white oaks; thence East 168 poles to a stake in the line of said Calderwoods survey No. 3138, thence with said line, North 228 poles crossing a branch to the beginning.



Ebenezer Fawcett  
Isaac Fawcett  
William Thom M.k.r

James Gallaway Jun<sup>r</sup> S.  
November 20<sup>th</sup> 1809  
January 11<sup>th</sup> 1810



Surveyed for Zadock Walker ap<sup>pr</sup> 400 acres of land on a military warrant No 5572 on the waters of Mead river. Beginning at a white oak marked for 30 Miles in Snelwons line North westerly corner to Thomas Northingtons survey No. 4479 running N. 70. E 133 poles to two black oaks and a cherry tree; thence N. 28 E. 178 poles to four hickories; thence N. 70. E 168 poles to a stake, thence N 20 W 182 poles to two hickories, thence S. 70. W. 106 poles to a black oak and hickory; thence S. 20. E. 120 poles to a black oak and white oak; thence S. 70. W. 328 poles to two black oaks south westerly corner to said Samuel Findley's survey, No. 4493; thence S. 20. E. 182 poles to the beginning.

Solomon McCulloch  
Samuel Herd  
Conrad Meester M.k.r

James Denny S.  
November 30<sup>th</sup> 1811  
December 24<sup>th</sup> 1811