

No. 7117

1000, acres

Surveyed for James Galloway Junr of 1000 acres of land on part of a Military Warrant No. 5661 on the waters of Darby's Creek: Beginning at a hickory and Sugar tree Northwestly corner to John McKinnon Survey No. 5049 in the line of Benjamin Stubblefields entry No. 3231 running with Stubblefields line N. 21 W. 36 poles to two blue ashes a sugar tree and two dead Mulberry Northeast corner to said Stubblefields entry and southeast corner to Augustine Smith's Survey No. 3230, thence N. 15 E. 660 poles crossing a branch at 44 on at 114 and on at 188 poles to a beech elm and dogwood; thence N. 55 E. 294 poles to a white oak, beech elm and sugar tree in the line of Robert Power Survey No. 3680; thence with his line S. 38 E. 34 poles crossing a branch at 14 poles to a white walnut, buckeye and sugar tree in said line; and northerly corner to Duncan McArthur's Survey No. 4953; thence with McArthur's line S. 52 N. 218 poles to two beech, a sugar tree and hickory Westerly corner to said McArthur's survey; thence with another of his lines S. 38 E. 380 poles crossing a branch at 200 poles to two sugar trees, a beech and white oak, in the edge of a pond southerly corner to said McArthur's survey; thence S. 52 N. 611 poles crossing a large branch at 530 poles to the beginning.

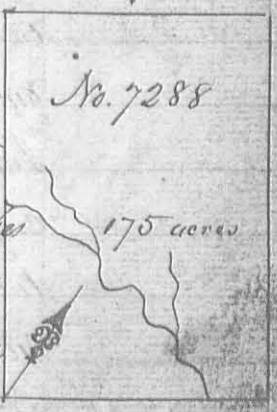
Job Sharp  
 Caleb Ballinger C.C.  
 William Towsley Mkr.

James Galloway Junr D.S.  
 July 20<sup>th</sup> 1811.  
 August 30<sup>th</sup> 1811.

Surveyed for James Galloway Junr of 175 acres of land on part of a Military Warrant No 5958 on the waters of Otter Creek a branch of Mile Creek; beginning at two blue ashes and a hickory easterly corner to John Bairds survey No. 5875 running with his line N. 38 W. 200 poles, crossing a branch at 100 poles to two beeches and a sugar tree northerly corner to said survey; thence N. 52 E. 140 poles to two sugar trees and a buckeye; thence S. 38 E. 200 poles to a walnut, buckeye sugar tree and hickory; thence S. 52 W. 140 poles, crossing the branch at 30 poles to the beginning.

Alexander Kerr C.  
 James Stevens C.C.  
 Joshua Sharp Mkr.

James Galloway Junr D.S.  
 March 4<sup>th</sup> 1812  
 March 18<sup>th</sup> 1812



No. 7288

175 acres

Surveyed for James Galloway Junr Apr 9 30  
 acres of land on part of a Military Warrant No 5661  
 on the waters of Darby's Creek; beginning at a hicko-  
 ry and sugar tree Northwestly corner to John McKennys  
 survey No. 5049 in the line of Benjamin Stubblefield sur-  
 vey No 3231, thence with his line N. 21 W 36 poles to two  
 blue ashes and a sugar tree Northeast corner to said  
 Stubblefields survey and southeast corner to Au-  
 gustine J Smiths survey No. 3230 thence  
 N. 15. E. 640 poles crossing several bran-  
 ches to an elm beech and dogwood  
 thence N. 55 E, 291 poles to an elm  
 beech, sugar tree and white oak  
 in the line of Robert Powers survey  
 No. 3680, thence with his line S. 38, E. 12  
 poles to a white walnut, buckeye and  
 sugar tree in said line Northly corner  
 to Duncan McArthur's survey No. 4953  
 thence with said McArthurs line S. 52, W.  
 218 poles to two beeches a hickory and sugar  
 tree westerly corner to said McArthurs survey  
 thence with another of his lines S. 38 E 390 poles  
 crossing several branches to two sugar trees, a beech  
 and white oak in the edge of a pond, southerly corner  
 to said survey; thence S. 52, W. 593 poles crossing a branch  
 to the beginning.

No. 7117

930, acres

Robt Sharp  
 Collet Bledinger C.C.  
 William P Sharp M.k.r.

James Galloway Junr D.S.  
 May 20<sup>th</sup> 1832  
 May 25<sup>th</sup> 1832

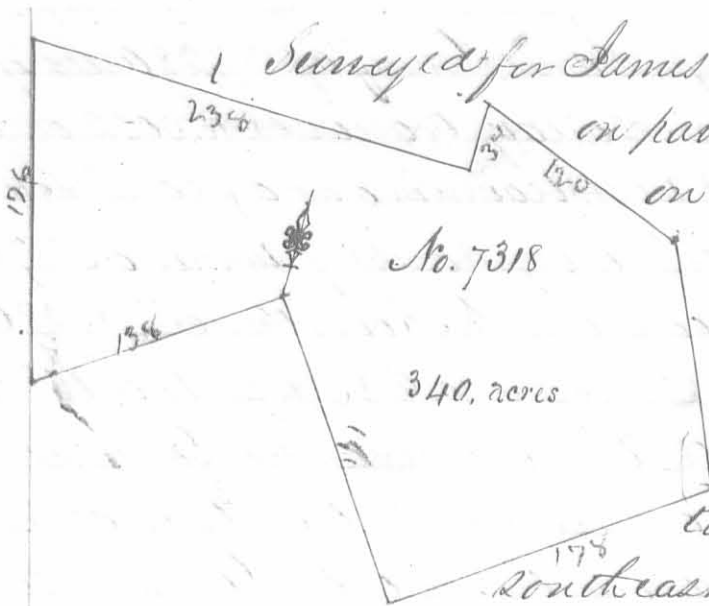
Surveyed for James Galloway Junr of 250 acres of land on  
 part of three Military Warrants viz: 160 acres on No 5874. 50 acres  
 on No. 5875 and 40 acres on No. 5827 on the waters of Mad river. Be-  
 ginning at a blue ash white walnut and buckey southwest corner to  
 Thomas Hott's survey No 2674 running with his line N 80 E 250 poles  
 crossing a branch at 30. one at 44 one at 102 one at 124 and one at 170 poles  
 to two hickories and a beech in said line and corner to John McDonalds  
 survey No. 5088, thence with M Donalds line S. 38, E. 122 poles to three beeches and a sugar tree in said line, thence  
 S. 52, W. 153 poles crossing a branch at 74 poles to two sugar trees and a lym on the south side of a dip gut, thence S  
 65 W. 122 poles to a stake, crossing a branch at 108 poles, thence N. 25 W. 216 poles crossing several branches to the beginning.



Richmond Measum  
 Benjamin Watkins  
 William P. Sharp M.k.r.

James Galloway Junr D.S.  
 August 5<sup>th</sup> 1811  
 August 30<sup>th</sup> 1811





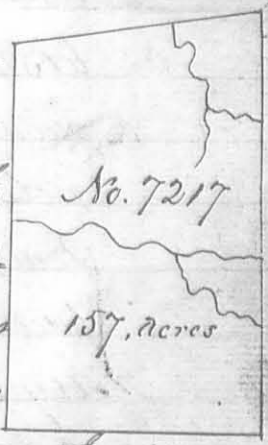
Surveyed for James Galloway Junr Apr 340 acres of land on part of two Military Warrants, 120 acres on No. 5827 and 220 acres on No. 5973 in the waters of Mead river; beginning at three sugar trees northeasterly corner to Thomas Parks survey No. 4497 running with his line S. 69 W 138 poles to two sugar trees and a white walnut southeast corner to James Mc Nutts survey

No. 4195 & 4604; thence with his line N 1 W 176 poles to two buckeyes and an elm corner to said Mc Nutt in the line of James Davis survey No. 3216; thence with Davis line S. 75. E. 238 poles to a lynn southeast corner to said Davis survey, thence with another of his lines N. 15 E 34 poles to a beech sugar tree and buckeye; thence S. 55, E 120 poles to two beeches and an ash corner to Benjamin Roipeau's survey No. 5812, thence with his line S. 11. E. 128 poles to two sugar trees and a hickory in the line of said Roipeau's survey No. 4676, thence with said line S. 69. W 178 poles to two beeches and a sugar tree in the line of said Parks survey; thence with said line N. 21, W 171 poles to the beginning.

Peter Mearns 3  
William Thom 3 C.C.  
Samuel Mearns M.k.r.

James Galloway Junr L.S.  
March 14. 1812  
March 18. 1812

Surveyed for Benjamin W Ladd and James Bamett Apr 157 acres of land on part of a Military Warrant No. 5759 vizt Ladd 120 acres and Bamett 37 acres on the waters of Mead river; beginning at a blue ash white walnut and buckeye south west corner to Thomas Holts survey No. 2674 southeast corner to David Bradfords survey No. 3136 and northwesterly corner to James Galloway Junr survey No. 7141 running with Galloway's line S. 25 E. 220 poles crossing several branches to a stake southwesterly corner to his survey; thence S 65 W. 128 poles to two small beeches and a hickory southerly corner to the representatives of Richard Calls survey No. 7161, thence with Calls line N. 25. W. 204 poles crossing a branch at 112 poles to two blue ashes and a hickory corner to said Calls survey in said Bradfords line thence with said line N. 58. E 129 poles crossing a branch at 82 poles to the beginning.



Benjamin Watkins 3  
Richard Mearns 3 C.C.  
Caleb Ballinger M.k.r.

James Galloway Junr L.S.  
March 14. 1812  
March 19. 1812



Surveyed for James Conny of 228 acres of land on part of a Military warrant No. 5052 on the waters of Head river; beginning at a stake southwesterly corner to Fepe Davis survey No. 4497 running N 76 E 133 poles to a black oak and hickory; thence N. 28 E 95 poles to two white oaks, thence S. 20. E 85 poles to a white oak and black oak in the line of Alexander Dunlaps survey No. 4331; thence S. 70. W 105 poles to three burr oaks Northwest corner to said survey, thence with Dunlaps line S. 23. E 281 1/2 poles to a stake in a barren; thence S. 70 W. 114 poles to a hickory in Ludlows line; thence N 20 W 301 1/2 poles to the beginning.

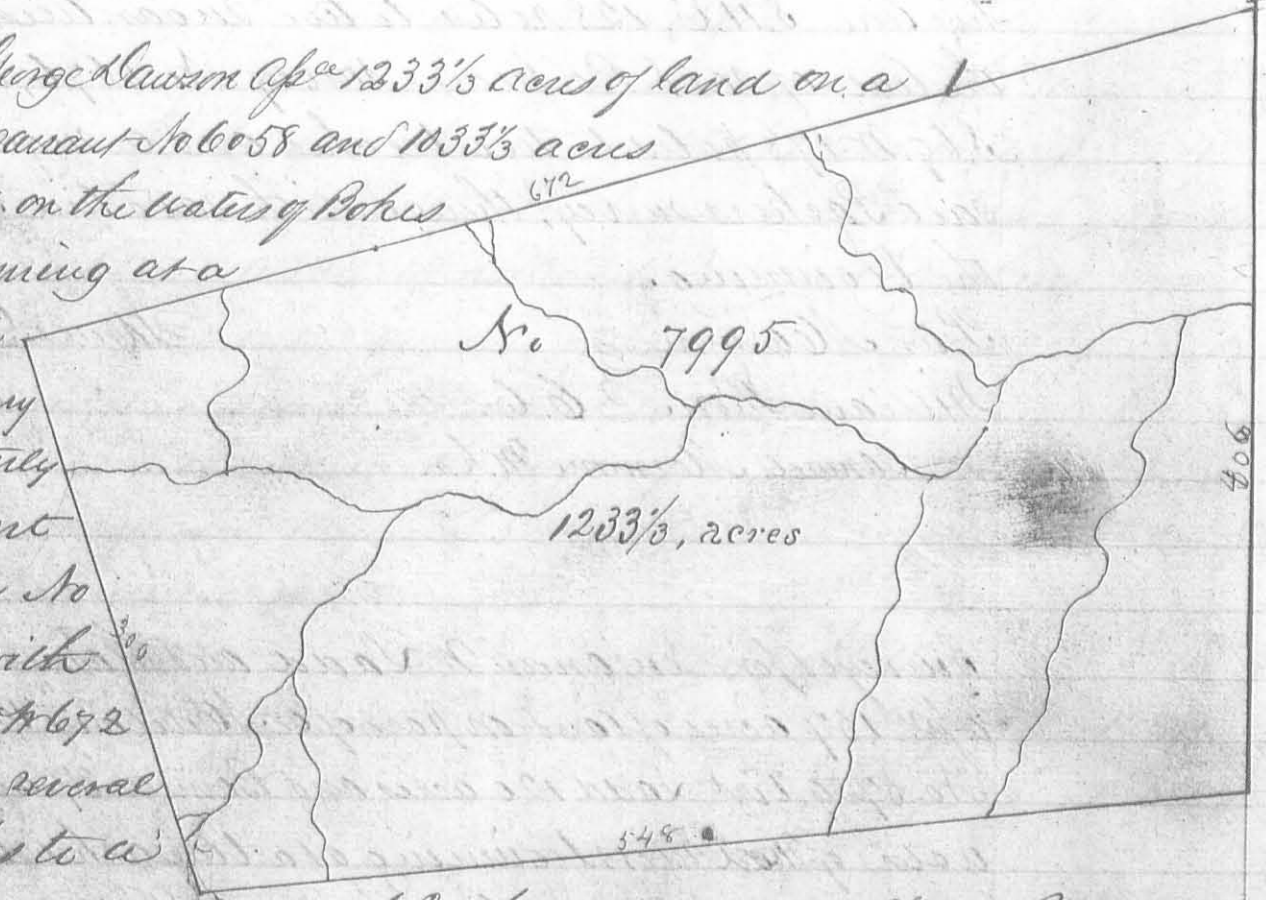
William Davis  
 William Southard  
 John Bangers M.k.

James Conny D.S.  
 January 20. 1812  
 April 13. 1812

Surveyed for George Lawson of 1233 1/3 acres of land on a Military warrant No 6058 and 1033 1/3 acres part of 6038 on the waters of Pokes creek: Beginning at a stake in the Indian Boundary line Northwesterly corner to Robert Means survey No 4154, thence with said line S 80 W 672 poles crossing several small branches to a buckeye sugar tree and beech Northeastly corner to Thomas Bourges survey No. 5288, thence with his line S 13 E 300 poles crossing a branch at 75 poles and a swamp to two sugar trees and a beech in said line, thence East 548 poles crossing a branch at 66 one at 328 and one at 416 poles to three sugar trees and an ironwood in the line of Means said survey, thence with said line N. 7 E 406 poles crossing a large branch to the beginning.

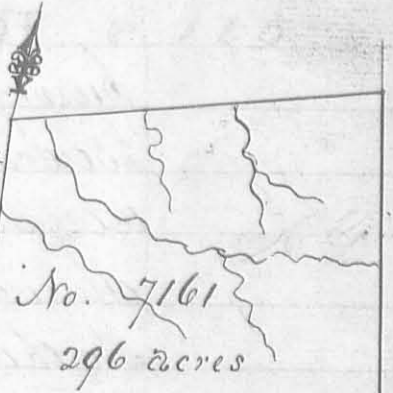
Benjamin Ferguson  
 Maria Chenoux  
 John Tomlinson M.k.

Walter Dun D.S.  
 May 27<sup>th</sup> 1815  
 October 12<sup>th</sup> 1815





Surveyed for the Representatives of Richard Call  
 dec<sup>d</sup> 296 acres of land on part of a Military Warrant  
 No. 5232 on the waters of Mead river. Beginning

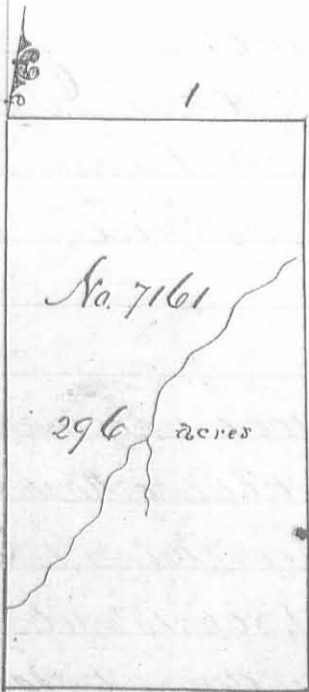


at two beeches and an ironwood southwest  
 corner to David Bradfords survey  
 No. 3136 in the line of the representatives  
 of James Calderwoods survey, No. 3139

running with Bradfords line N. 58. E. 190 poles crossing several bran-  
 ches to two blue ashes and a hackberry in said line; thence S 25 E  
 204 poles crossing a branch at 92 poles to a hickory and two small  
 beeches, thence S. 65. W 363 poles to two beeches in the line of said  
 Calderwoods survey No. 3137; thence with his line N. 15 E 154  
 poles to an ash and sugar tree northeast corner to said survey and  
 corner to said Calderwoods survey No. 3139 thence with the line  
 of said survey N. 74 E 65 poles to two sugar trees corner to said  
 survey; thence with another of the lines of said survey N. 16 W 74 poles  
 to the beginning.

Richard Mamon  
 Benjamin Matthews  
 William Stunsley M.k.r.

James Galloway Jr. D.S.  
 December 3<sup>d</sup> 1811  
 January 2<sup>d</sup> 1812



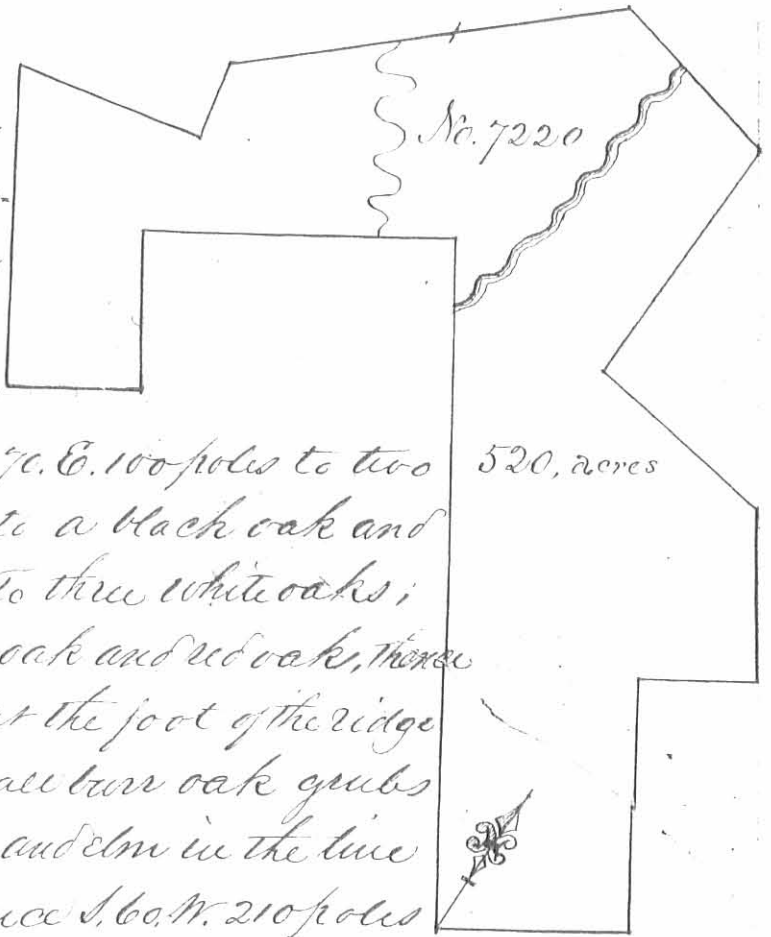
Surveyed for the Representatives of Richard Call  
 296 acres of land on part of a military warrant  
 No. 5232 on the waters of Rush Creek. Beginning  
 at an ash and two hickories Northeast corner  
 to Taylor and Piercis survey No. 10060 in the  
 line of Alexander Parkers survey No. 9958  
 running with Taylor and Piercis line S. 12. E.  
 300 poles crossing a branch at 260 poles to a  
 stake in said line; thence N. 78. E 158  
 poles to a stake; thence N. 12. W. 300 poles

crossing a branch to a stake in the line of Robert Means  
 survey No. 9959, thence with Means line passing his south  
 west corner and with the line of said Parkers survey  
 S. 78. W. 158 poles to the beginning.

David Colvin  
 James Nancy  
 Noah Hewitt M.k.r.

Thomas J. McArthur D.S.  
 April 21, 1822  
 June 18, 1822

Surveyed for James Denny a few  
250 acres of land on part of a military  
warrant No 5052 on Road River. Be-  
ginning at a black oak and hickory  
Northwest corner to Zadok Mackers  
Denny No. 6516 in the line of Samuel



Finley's survey No. 4493 running N. 70. E. 100 poles to two  
hickories; thence N. 20. W. 130 poles to a black oak and  
white oak; thence N. 70. E. 60 poles to three white oaks;  
thence N. 20. W. 90 poles to a white oak and red oak; thence  
N. 71. W. 110 poles to two hickories at the foot of the ridge  
thence N. 12. E. 140 poles to two small burr oak gnubs  
thence N. 65. W. 100 poles to a hickory and elm in the line  
of said Denny's survey No. 4957; thence S. 60. W. 210 poles  
passing said Denny's corner to three white oaks in the line of Thomas No  
Bailey's survey No. 5864; thence with his line South 40 poles to three  
black oaks southeast corner to said Bailey; thence with another of his  
lines West 100 poles to a black oak; thence S. 20. E. 162 poles to a black  
oak in the line of said Finley's survey; thence N. 70. E. 79 poles to a  
white oak; thence N. 20. W. 90 poles to a hickory and black oak  
thence N. 70. E. 166 poles to a post corner to said Finley's survey No.  
4425; thence S. 20. E. 357 poles to the beginning.

Conrad Moore 3  
William A Mc Neal 3 66  
Israel Howell Mkr.

James Denny D.S.  
February 20<sup>th</sup> 1812  
April 13. 1812



Surveyed for Green H Hubbard a few 100 acres of land on part of  
a military warrant No. 4818 in the waters of Rush Creek; begin-  
ing at a beech and sugar tree southeast corner to Sayton Yancey's  
survey No 3320, running thence N. 80. E. 152 poles crossing the  
lake pond 48 to 118 poles to two sugar trees southwest corner to James Keelin's  
survey No. 3323; thence with his line N. 10. W. 105 1/4 poles to a sugar tree  
two buckeyes and a hackberry; thence S. 80. W. 152 poles crossing Rush  
creek at 98 to a lynn large ash + 2 sugar trees in the line of said  
Yancey's survey; thence with said line S. 10. E. 105 1/4 poles crossing a branch  
at 28 poles to the beginning.

Milkiah Rosebrough 3  
Robert Rosebrough 3 66  
P. A. White Mkr.

James Taylor D.S.  
Decem<sup>r</sup> 15. 1823  
Novem 13. 1824



Surveyed for Walter Dun of 230 acres of land on a Military warrant No. 6081 and 130 acres on part of No. 6125 on the waters of Mead river: Beginning at a white oak and red oak westerly corner to said Dun's survey No. 6762, thence with his line and the line of James Denny's survey No. 4957, N. 60 E. 192 poles to a sugar tree corner to Denny's said survey; thence with another of his lines N. 30 W. 16 poles to a black oak corner to Denny and southerly corner to John Gallows's survey No. 6449, thence with said line N. 84 W. 114 poles to three white oaks southwesterly corner to Gallows; thence North 20 poles to two hickories southeast corner to Alexander S. Dandridge's survey No. 4477; thence with Dandridge's line West 105 poles to a sugar tree and red oak in said line corner to Thomas Bayly's survey No. 5864, thence with Bayly's line south 355 poles crossing a branch at 120 and at 206 poles to three white oaks corner to said Denny's survey No. 7220, thence with his line N. 60 E. 125 poles crossing a branch at 98 poles to a stake in the line of Anthony Singleton's survey No. 4943; thence with said line N. 24 E. 80 poles to a white oak, northerly corner to Singleton's survey; thence with another of his lines S. 80 E. 73 poles to a stake in said line and in the line of said Denny's survey No. 7220, thence with said line N. 60 E. 14 poles to a stake on the side of a brushy ridge, southerly corner to said Denny's survey No. 4957; thence with his line N. 30 W. 76 poles to three white oaks in said line easterly corner to Dun's said survey; thence with Dun's line S. 60 W. 106 poles to a black oak and white oak southerly corner to Dun's said survey; thence with another line of the said survey N. 30 W. 84 poles to the beginning.

George McCulloch 3  
 William McCulloch 366  
 Solomon McCulloch M.k.r.

Walter Dun D.C.  
 July 31<sup>st</sup> 1815  
 October 9<sup>th</sup> 1815

No. 9370  
150, acres

Surveyed for Thomas Perkins ap<sup>ca</sup> 150 acres of land on a military warrant No 6214 and 50 acres on part of No 6215 on the waters of Mill creek and Mad river: Beginning at two poplars and a hickory westerly corner to the Representatives of Swelling Jones survey No 4653 and southerly corner to Ladd and Norvell's survey No 9198 running with their line N. 38. W. 30 poles to two beeches and an ash westerly corner to their survey; thence S. 52. W. 190 poles to a beech and ash on the side of a hill, thence S. 38. E. 130 poles to a black walnut buck and hickory; thence N. 52. E. 190 poles to the beginning.

Edmond Keammon  
David Keammon  
William Sturtevant M.k.r.

James Galloway Jun<sup>r</sup> D.S.  
November 7<sup>th</sup> 1817  
May 22<sup>nd</sup> 1818

Surveyed for Silletary Albridge 150 acres of land on a military warrant No. 6027 and 50 acres part of No. 6216 on the waters of Mill creek and Mad river, beginning at a sugar tree, dogwood, beech and hickory northerly corner to Ladd and Norvell's survey No. 9198 in the line of John M<sup>c</sup> Donald's survey No. 5088 running with Mc Donald's line N. 38 W. 194 poles crossing a branch of Mill creek at 40 poles to three beeches and a sugar tree easterly corner to James Galloways survey No. 7140; thence with his line S. 52 W 124 poles crossing a branch of Mad river at 64 poles to a lynn, dogwood & hickory, ironwood and sugar tree in said Galloways line; thence S. 38. E. 194 poles to two beeches and an ash westerly corner to said Ladd and Norvell's survey; thence with their line N. 52 E. 124 poles to the beginning.

No. 9372  
150, acres

Edmond Keammon  
David Keammon  
Wm. Sturtevant M.k.r.

James Galloway Jun<sup>r</sup> D.S.  
November 7<sup>th</sup> 1817  
May 22<sup>nd</sup> 1818

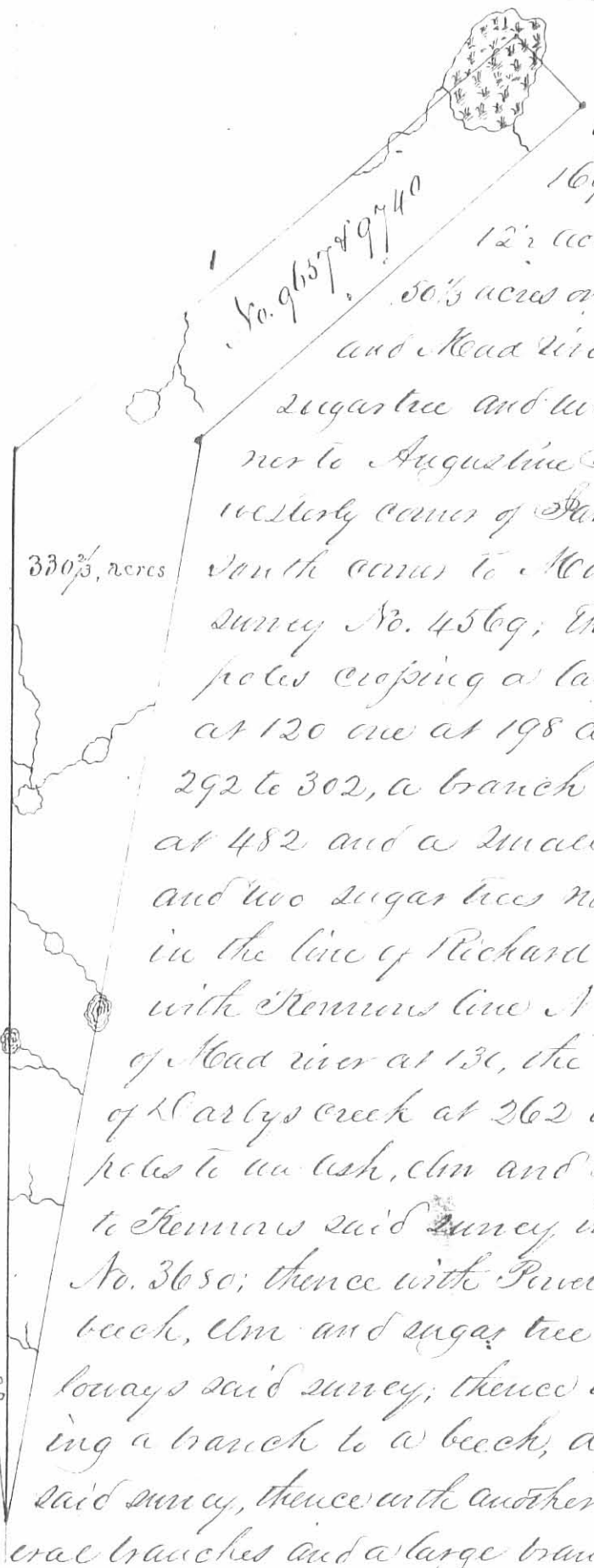
No. 9572  
65, acres

Surveyed for Cadwallader Wallace 65 acres of land on part of a military warrant No. 6217 on the waters of Big Miami: beginning at two black oaks Northeast corner to Pryor Pruitt's survey No. 5045 in the west line of Hezekiah Meaton's survey No. 4498; thence with said line North 90 poles to a white oak and dogwood Northwest corner to Meaton's said survey in the line of Alexander Standridge's survey No 4478; thence with his line west 132 poles passing his southwest corner at 80 poles to two black oaks in Sidons line, thence with said line S. 20 E. 97 poles to two black oaks southerly corner to Pruitt's said survey thence with his line East 100 poles to the beginning.

Amos Foster  
John Waddington  
Silvanus Brown M.k.r.

Cadwallader Wallace D.S.  
June 13<sup>th</sup> 1818  
June 19<sup>th</sup> 1818





No. 9657  
No. 9740

330 2/3 acres

Surveyed for Master Samm Capt 330 2/3 acres of land on part of the Military Warrant 169 2/3 acres on No. 5638, 30 acres on No. 5631 12 2/3 acres on No. 5621, 68 2/3 acres on No. 5877 and 50 2/3 acres on No. 5825 on the waters of Carlys creek and Head river: beginning at two blue ashes a sugar tree and two dead mulberries southeasterly corner to Augustine Smiths survey No. 3230 most westerly corner of James Gallaways survey No. 7117 and south corner to Maria Bella Scott and Bernard Scott survey No. 4569, thence with Scotts line N. 50. 50' E 654 poles crossing a large branch at 46 a small branch at 120 one at 198 a drain at 286 crossed a pond from 292 to 302, a branch at 386, one at 454 the Urbana road at 482 and a small branch at 536 poles to a red oak and two sugar trees northerly corner to Scotts said survey in the line of Richard Kemmas survey No. 4570, thence with Kemmas line N 56 E 400 poles crossing a branch of Head river at 136, the Urbana road at 232 and a branch of Carlys creek at 262 at 299, at 306, at 328 and at 343 poles to an ash, elm and maple in a swamp easterly corner to Kemmas said survey in the line of Robert Powers survey No. 3650; thence with Powers line S. 38 E. 57 poles to a white oak beech, elm and sugar tree in said line northerly corner to Gallaways said survey; thence with his line S. 53 W 310 poles crossing a branch to a beech, dogwood and elm corner to Gallaways said survey, thence with another of his lines S. 15 W. 671 poles crossing several branches and a large branch to the beginning.

Joshua Cain  
Asa Robinson  
William Sharp M.k.a

Walter Dun, D.S.  
December 1<sup>st</sup> 1818  
May 4<sup>th</sup> 1819

Surveyed for Joseph and Benjamin W Sudd and Thomas Nowell apt 9 acres of land on part of a Military Warrant No 5880 on the waters of Head river; beginning at a beech, sugar tree and cherry tree northeast corner to Samuel Davis survey No. 3216 running with his line S. 15 W. 182 poles to a beech and sugar tree in said line and beginning corner to Thomas Thucate survey No. 4661, thence with said Thucate line N. 19 2/3 E. 203 poles to two beeches and a sugar tree north westerly corner to his survey, thence S. 70 W. 26 poles to the beginning.

Caleb Reens  
Dana Morrison  
Jeremiah Reens M.k.a

James Gallaway Junr D.S.  
September 6<sup>th</sup> 1819  
October 20<sup>th</sup> 1819

No. 9833

No. 9891

999 $\frac{1}{2}$  acres

Surveyed for William Roberts of  
John Robertson and Thomas Cranton  
999 $\frac{1}{2}$  acres of land on the following  
Military Warrants; Roberts 350 acres  
on No 2027 and 2030; Robertson 575 $\frac{3}{4}$   
acres on part of No. 2158 and Crav-  
en 78 $\frac{3}{4}$  acres on part of 44 on the  
waters of Boker creek; beginning  
at two beches and a small Cherry  
tree in the Greenville Treaty line  
southeast ~~south~~ corner to Lake  
Cannon and other survey No. 9890  
thence with the Greenville treaty

line S. 78 $\frac{3}{4}$  E 400 poles to an ash horn beam and two beches; thence N  
12 N. 400 poles to an ash, cherry tree and box elder on the bank of a  
branch; thence S. 78 $\frac{3}{4}$  N. 400 poles crossing said branch at 140 and at 214  
poles to three beches northeast corner to Cannon and other survey; thence  
S. 12, E 400 poles to the beginning.

Lewis D Sharp  
Melkiah Rosbrag  
Wilson & Thompson M.k.r.

Saml Ferrer D.S.  
January 3 1820  
July 21 1820

Surveyed for the Representatives of  
Robert Young dec<sup>d</sup> 1000 acres of land  
on part of a Military Warrant No 5267  
on the waters of the Big Miami: Begin-  
ning at three beches southeast corner  
to the Representatives of Francis Taylor  
and other survey No. 9969 and north  
east corner to George Clark survey No  
9967, thence N 78 E 400 poles crossing  
the main branch of big Miami at  
98 and a branch at 282 poles to two  
hickories northeast corner to Michael  
Bayers survey No. 9949, thence N 12 N. 400 poles crossing the main creek at 42  
poles to two beches; thence S. 78 $\frac{3}{4}$  N. 400 poles to a hickory, lym and sugar tree north  
east corner to Taylor and other entry No. 9969, thence with a line of said entry  
S 12 E 400 poles to the beginning.

Lewis D Sharp  
Melkiah Rosbrag  
Wilson & Thompson M.k.r.

No. 9970

1000 acres

Saml Ferrer D.S.  
March 2 1820  
July 22 1820