

No. 9912

1000, acres

Surveyed for Nicholas Toliaferro
1000 acres of land on part of
a Military Warrant No. 854
on the waters of Bokes Creek
Beginning at a Sugar tree and
two beeches South east corner of
John Swann and other survey
No. 9911; thence N. 75 E 400 poles
to three beeches North east corner
of Luke Cannon and other sur-
vey No. 9890; thence N. 12 W. 400
poles to a buckeye, birch oak, ash
and horn beam on the bank of

Bokes Creek, North west corner of John Swann and other survey No
9913; thence S. 78 W. 400 poles crossing a branch at 131 poles to
three beeches; thence S. 12 E 400 poles to the beginning.

Walter Jones

Peter Titus

Jacob Fustermaker M.k.r.

O. F. Hendrick D.S.

October 2nd 1830October 29th 1830

Surveyed for Thomas Perkins and Littlebury Al-
dridge 100 acres of land on part of two Mil- No. 9371
itary Warrants, Perkins 50 acres on No. 6205 and 100 acres
Aldridge 50 acres on No. 6206 on the waters of Mad
river and mile creek; Beginning at two poplars and
a hickory westerly corner to the representatives of Sewelling
Jones survey No. 4655 running S 52 W. 180 poles to three ashes
and a buckeye in the line of Thomas Threatts survey No. 4661
thence with said Threatts line and course thereof S 75 E. 204
poles passing his North easterly corner to three beeches in the
line of William Aguns survey No. 4682; thence with said
line N. 25 E. 39 poles to two beeches and a poplar corner to
his survey; thence N 52 E poles to a sugar tree, red oak and
poplar, corner to said Aguns survey in the line of said Jones
survey; thence with his line N. 38 W. 150 poles crossing a branch
to the beginning.

Edmund Mearns

David Mearns & C

William Townsley M.k.r.

James Gallaway Jun D.S.

November 7th 1817May 22nd 1818

Surveyed for Thomas Perkins, Littleberry Hedridge and Walter Dun 200 acres of land on part of three Military Warrants; Perkins 50 acres on No 6205, Hedridge 50 acres on No 6206 and Dun 100 acres on No 6220 on the waters of Head river and Mill creek. Beginning at three blue ashes and a hickory in the line of Thomas Theate survey No. 4661 southerly comes to Walter Dun's survey No 10426; 10427; 10441 thence N. 52, E. 234 poles passing the southerly corner of said Perkins survey No 6370 at 38 poles crossing a branch at 48 poles to a hickory and two poplars easterly comes to said survey and westerly comes to the representatives of Newling Jones survey No 4650; thence with Jones line S. 38 E 194 poles crossing Otter Creek at 13 poles to a sugar tree red oak and poplar in said line most westerly comes to William Agans survey No 4682; thence with Agans line S 52 W. 8 poles to two beeches and a poplar comes to said survey; thence with another of his lines S. 25 W. 66 poles to three in said line; thence N. 75 W. 280 poles passing the Northeastly corner of Isaac's said survey and with his line crossing a branch to the beginning.

John Lingout
John Marmont C.C.
Aaron Hunt Mkr.

Walter Dun D.S.
January 23rd 1823
May 28th 1823

Surveyed for the Representatives of Rowland Madison 400 acres of land on part of a military warrant No. 5789 on the waters of Rush Creek. Beginning at a buckeye, two oak ash and hornbeam Southeast comes to Moorrows and Taylor's survey No. 9937 and North east comes to Nicholas Taliaferro's survey No. 9912; thence with the north line of survey No 9913 N. 79 E. 160 poles to a stake, thence N. 12 W. 400 poles to a stake, thence S. 78 W. 160 poles crossing the out let of a large Beaver Dam at 60 poles to a buckeye, lyme and two iron woods North east comes to Moorrows and Taylor's said survey; thence with their line S. 12 E 400 poles to the beginning.

Levi D Sharp
Hilkiah Rosebary C.C.
Wilson S. Thompson Mkr.

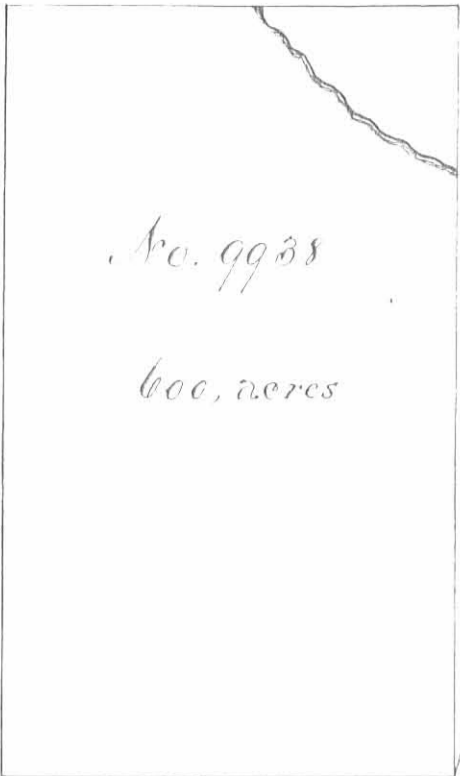
Samuel Forrer D.S.
January 21st 1820
December 7th 1820

No. 9371 & 12174

200 acres

No. 9938

400 acres



No. 9938

600 acres

Surveyed for the representatives of Rowland Madison 600 acres of land on part of a military warrant No. 5789 on Rush Creek. Beginning at a buckeye and two ashes on the west side of a small pond northeast corner to Flood and others survey No. 9913 and north west corner to James Taylor's Survey No. 9914; thence N. 12 W. 400 poles crossing Rush creek at 298 poles to a sugar tree and two beeches thence S. 78 W. 240 poles crossing the creek at 111 poles to a stake northeast corner to said Madisons survey No. 9938 for 400 acres; thence with his line S. 12 E. 400 poles to a stake in a line of said survey No. 9913; thence with said line N. 78 E. 240 poles to the beginning.

Levi D. Sharp
 Melkiah Rosebraugh
 Nelson & Thompson M. E.

Samuel Forrester O. S.
 January 21st 1820
 December 7th 1820

Surveyed for James Taylor 983 acres of land on part of a military warrant No. 5440 on the waters of Rush Creek and Pokes Creek; beginning at an ash, cherry tree and box elder southeast corner to Swan and others survey No. 9913 and Northwest corner to James Taylor's survey No. 9892; thence with a line of said survey N. 78 E. 400 poles crossing Pokes Creek to a beech and two sugar trees northeast corner to said survey No. 9892; thence N. 12 W. 383 poles to a sugar tree and two beeches; thence S. 78 W. 400 poles crossing a branch of Rush creek at 200 and one at 300 poles to a buckeye and two ashes on the west bank of a small pond northeast corner to survey No. 9913; thence S. 12 E. 383 poles crossing Pokes Creek at 200 poles to the beginning.

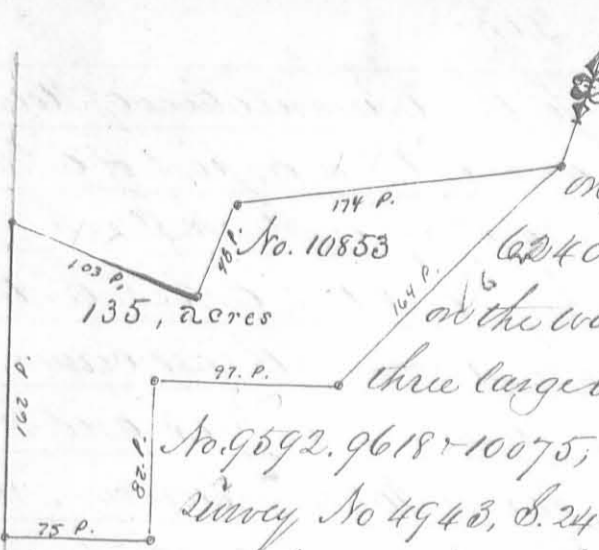


No. 9914

983 acres

Levi D. Sharp
 Melkiah Rosebraugh
 Nelson & Thompson M. E.

Samuel Forrester O. S.
 January 18th 1820
 March 9th 1820

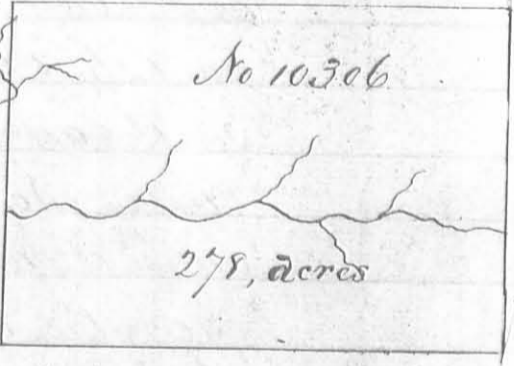


Surveyed for Walter Dun 135 acres of land on part of three Military Warrants; 50 acres on No. 6240, 14 acres on No. 6241 and 71 acres on No. 6098 on the waters of Mad River; Beginning at a stake and three large white oaks westerly corner to said Dun's survey No. 9592, 9618 & 10075; thence with the line of Anthony Singleton's survey No. 4943, S. 24 N. 164 poles crossing a large branch at 162 poles to a stake, two small live oak and a black oak westerly corner to Singleton's said survey in the line of Samuel Finley's survey No. 4493 and 4525; thence with said line S. 70 N. 97 poles to two hickories and a white oak corner to Finley's said survey; thence another of his lines S. 20 E. 82 poles to a white oak and black oak corner to said survey; thence with another of his lines S. 70 N. 75 poles to a stake in said line easterly corner to said Dun's survey No. 9793; thence with Dun's line N. 20 W. 162 poles to a black oak Dun's northeasterly corner in the south line of Thomas M. Bayly's survey No. 5864; thence with said line East 103 poles to three black oaks southeasterly corner to said survey; thence with another of his lines North 48 poles to three white oaks in said line southerly corner to said Dun's survey No. 8303 and 8485; thence with the line of said survey N. 60 E. 174 poles crossing the branch at 57 poles to the beginning.

Nathaniel Pope
Richard Shockley
Aaron S. Hunt M.R.

Walter Dun D.S.
November 19th 1821
January 29th 1822

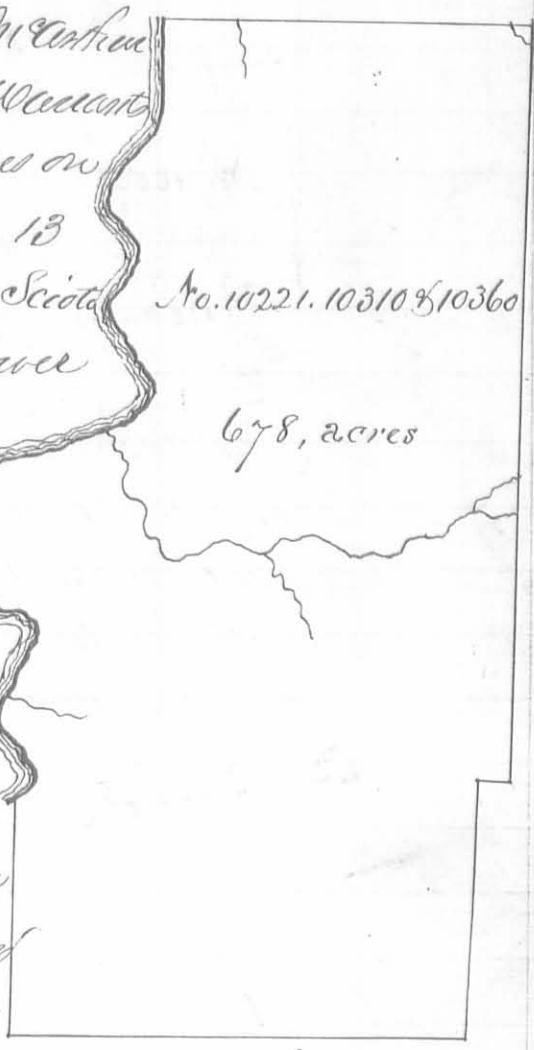
Surveyed for Abraham J. Williams 278 acres of land on part of a Military Warrant No. 5749 on Cherokee-man's run a branch of the big No. 10306 Miami; Beginning at two red oaks and a large white oak southwest corner to Mark Hardins survey No. 9883 in the Greenville Treaty line; thence with said line S. 78 N. 256 poles to three white oaks in a swamp, thence N. 12 W. 174 poles crossing the spring fork at 64 poles, crossing a spring and bend of the middle fork at 134 poles and the fork at 164 poles to a large live oak and buckeye; thence N. 78 E. 256 poles crossing the middle fork at 3 poles to a white oak and two sugar trees in Hardins line; thence with said line S. 12 E. 174 poles crossing a drain at 110 poles to the beginning.



George Henry
James Henry
Noah Dewalt M.R.

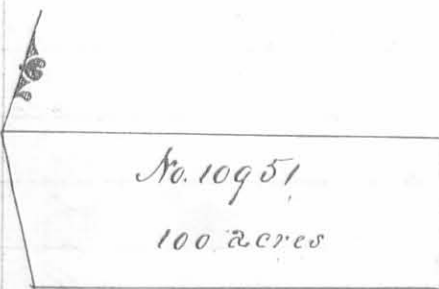
Thomas J. McArthur D.S.
January 9th 1821
March 26th 1821

Surveyed for Robert Means and Duncan McArthur
 open 678 acres of land on part of five Military Warrants
 Means 600 acres; 400 acres on No 5367, 200 acres on
 No 5231 and McArthur 78 acres on No. 5070. 13
 acres on No 5551 and five acres on No 5104 on Sciota
 river: Beginning at a large honey locust lower
 corner on the river of said Means entry No.
 10019 made the 20th March 1820; thence
 down the river with the meanders thereof
 and binding thereon N. 50 W 34. N 13 E 50
 N. 47 W 18. S. 70 W. 10. N 44 W. 24. N 20 W. 34. N 17
 E 28. N. 60 E. 66. N. 28. E. 26. N 40 W. 52. N 18 E. 32
 N. 45 W. 30. N. 10 E. 22. N. 34 E. 24. N. 11. W. 54
 N. 8 E. 6 poles to a stake in a prairie; thence
 N. 78 E. 190 poles crossing a branch at 42 and
 one at 181 poles to three beeches two of them
 down, thence S. 12 E 392 poles crossing a small branch at 12 one
 at 226 and a large branch at 250 poles to a red oak sugar tree
 black walnut and small blue ash; thence S. 78 W. 17 poles to a
 stake; thence S. 12. E. 134 poles to a stake in the north line of the
 representatives of John Green's entry No. 10010; thence with said
 line S. 78 W. 240 poles to a lynn and beech at the Northwest cor-
 ner of said entry; thence N. 12 W 125 poles to a forked honey lo-
 cust on the bank of the river; thence N. 23 E. 13 poles crossing
 a bend of the river to the beginning.



David Colvin 3
 James Henry 3 C.C.
 Peter McArthur M.k.r.

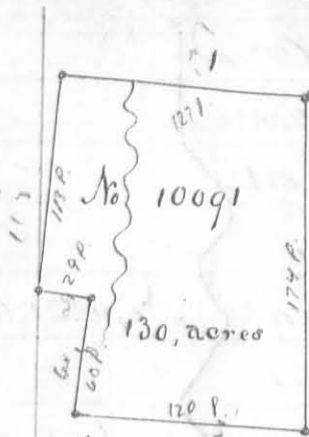
Thomas J. McArthur D.S.
 January 26th 1821
 March 29. 1821



Surveyed for Walter Dun of 100 acres of land on a
 Military Warrant No. 6482 on the waters of Big Miami
 beginning at two hickories and a large white
 in Robert line Southwestly corner to the said Dun
 survey No. 9925. 9946 & 10121; thence with said line S. 24. 30' E. 80 poles
 to two red oaks, a small bur oak and small hickory in said line
 thence N. 78. E. 211 poles to a bur oak, hickory, ash and small
 red elm; thence N. 13, W. 78 poles to a hickory, red oak and cherry
 tree southeast corner to said Dun's said survey; thence with his line
 S. 78 W. 227 poles to the beginning.

William Stayfield 3
 Samuel Trigo 3 C.C.
 Joel Smith M.k.r.

Thomas J. McArthur D.S.
 October 25th 1822
 February 25th 1823



Surveyed for Cadwallader Wallace of 130 acres of land on part of a Military Warrant No. 5872 on the waters of Mead River. Beginning at three hickories southeasterly corner to Walter Dun's survey No. 9878 in the line of Holland Hanceys survey No. 3224; thence with Hanceys line S. 24. E. 174 poles to two white oaks in said line corner to James Gallaway's survey No. 6487; thence with his line S. 70 W. 120 poles to two white oaks northeasterly corner to Gallaway's said survey in the line of Thomas Northington's survey No. 4479; thence with his line N. 20. W. 60 poles crossing a branch to two white oaks an Elm and hickory, northeasterly corner to Northington's said survey thence with his line S. 70 W. 29 poles to a stake; thence N. 21 W. 113 poles to a black oak southwesterly corner to Dun's said survey; thence with his line N. 69 E. 127 poles crossing the branch to the beginning.

Henry A. Hance

Israel Hance

Matthew Bonner M.R.

Walter Dun D.S.

January 15, 1820

March 14, 1820

Surveyed for Joseph and Benjamin W. Ladd and Thomas Hance of 88 acres of land on part of a Military Warrant No. 5870 on the waters of Stony creek. Beginning at a black walnut and two dogwoods southeasterly corner to Alexander S. Dandridge survey No. 4478; thence with his line North 160 poles crossing a branch at 78 poles to a sugar tree and elm in the line of said survey; thence S. 80 W. 119 poles crossing a branch to a stake in Ludlow's line; thence with said line S. 20 E. 148 poles to two black oaks corner to Cadwallader Wallace survey No. 9478; thence East with his line 69 poles to the beginning.



Martin Dewitt

Jacob Foster

Matthew Bonner M.R.

Walter Dun D.S.

February 1st 1820

March 14th 1820

Surveyed for Walter Dun and William Bayles of $1094\frac{2}{3}$ acres of land on part of nine Meridian warrants; Dun 827 acres, 200 acres on No. 5570, 124 acres on No. 6218, 90 acres on No. 6202, 130 acres on No. 6217, 19 acres on No. 6124, 81 acres on No. 6126, 50 acres on No. 6147, 110 acres on No. 5749 and Bayles $26\frac{2}{3}$ acres on No. 3167 on the waters of Big Miami; beginning at three white oaks, marked as the southeast corner of the Shawnee Reserve at Seneca

No. 10122, 10248, and 10249

$1094\frac{2}{3}$ acres

where Robert's line crosses the Greenville Treaty line; thence with said line N. 78. E. 400 poles crossing a small branch at 146 poles to two red oaks and two white oaks; thence N. 12 W. 400 poles crossing a prairie from 240 to 370 poles a branch in the prairie at 350 poles to a bur oak and small elm; thence S. 78. W. 488 poles to two white oaks and a hickory in Robert's line; thence with said line S. 24. E. 407 poles crossing two branches to the beginning.

George Henry $\frac{2}{3}$

James Henry $\frac{3}{3}$ C.C.

Benjamin McCulloch m.k.r.

Thomas S. McArthur D.S.

January 8th 1821

March 27th 1821

Surveyed for David Stephenson 166 acres of land on part of a Meridian warrant No. 347 on the waters of Big Miami;

beginning at an ash in a swamp southwest corner to Nathan Reeves survey No. 9927 in the line of the representatives of Michael Rudolph's survey No. 9924

thence with their line S. 78 W. 194 poles to two ashes and two hickories north west corner to their said survey; and south east corner to Isaac Gardner's survey No. 12052; thence N. 78 W. 89 poles to a bur oak, hickory, ash and small red elm north east corner to Gardner's said survey thence N. 49 E. 219 poles to a small black walnut in the line of Reeves said survey; thence with said line S. 12 E. 190 poles to the beginning.

George Henry $\frac{2}{3}$

James Henry $\frac{3}{3}$ C.C.

Joel Smith m.k.r.

No. 10434

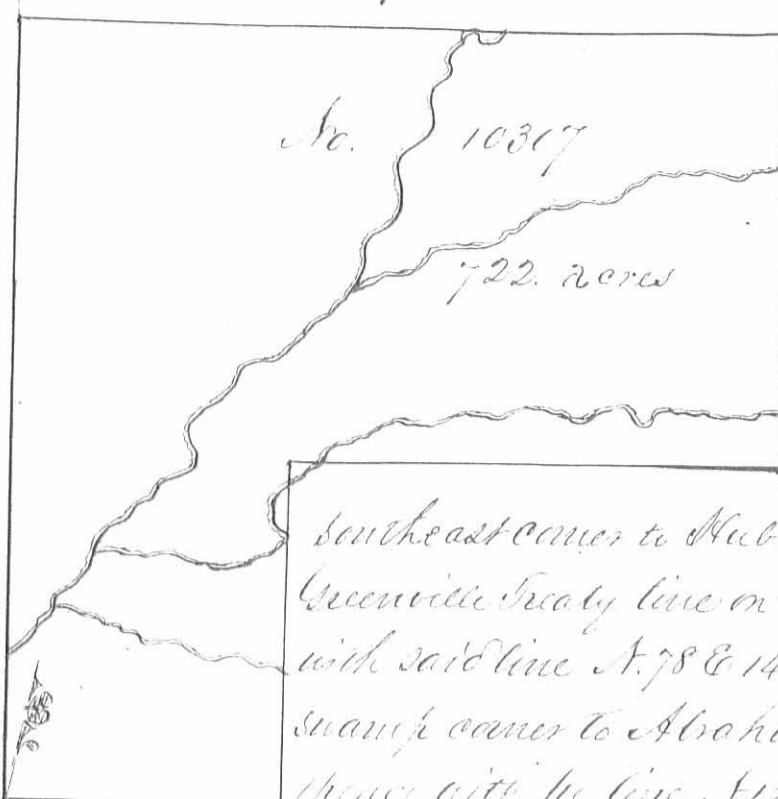
166, acres

Thos S. McArthur D.S.

December 25th 1822

July 7th 1823

1



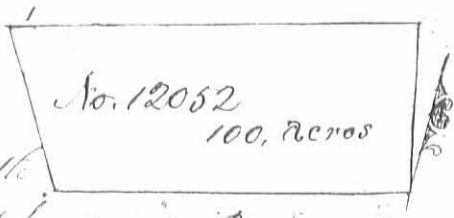
Surveyed for Duncan McArthur
and Joseph Hill 722 acres of
land on part of three Military War-
rants, McArthur 558 acres, Hill 164
acres on No 5358, 163 acres on No 5557
and Hill 164 acres in No. 5805 on
Cherokee mans run: Beginning at

two white oaks and a black oak
southeast corner to Hubbard Myatts survey No. 9881 in the
Greenville Treaty line on the west side of Mills road, thence
with said line N. 78 E 144 poles to three white oaks in a
swamp corner to Abraham Williams survey No. 10306
thence with his line N. 12 W 174 poles crossing the Spring
fork at 61, a spring and bend of the middle fork of Cherokee mans run at
34 and at 164 poles to a large tree oak and buckeye northwest corner to
Williams said survey, thence with another line thereof N. 78 E 256 poles
crossing the said fork at 3 poles to a white oak and two sugar trees north
east corner to said survey in the line of Clark Hardins survey No. 9983
thence with said line N. 12 W. 226 poles crossing the fork at 30 and a
branch at 188 poles to pine beeches, thence S. 78 W. 400 poles crossing the
North fork of Cherokee mans run at 156 at 162 and at 170 poles crossing
Mills road at 276 poles to three hickories northeast corner to Myatts
said survey, thence with his line S. 12 E 400 poles crossing a small branch
branch at 68 and Cherokee mans run at 326 poles to the beginning.

George Henry 3
James Henry 3 66
Noah Devalt Mkr

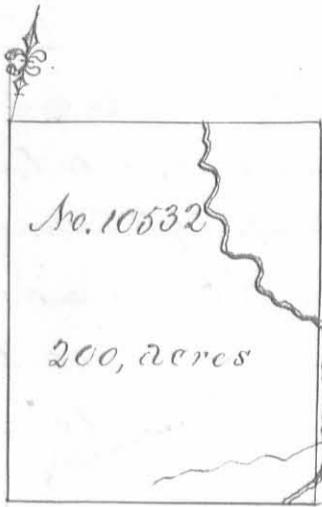
Thomas J. McArthur D.S.
January 9th 1821
March 29th 1821

Surveyed for Isaac Gardner 100 acres of land on
part of a Military Warant No. 6476 on the waters of the
big Miami; beginning at two ashes and two hickories north
west corner to the representatives of Michael Rudolphs survey No. 9902,
thence N. 7 W. 85 poles to a live oak, hickory small ash and small red
elm southeast corner to Walter Sun's survey No. 10951 thence with his line
S. 78 W. 211 poles to two red oaks a small live oak and a small hickory
in Roberts line south west corner to Lewis said survey; thence with Roberts
line S. 24 30' E. 88 poles to a white oak and ash in said line; thence N. 78 E
181 poles to the beginning.



Samuel Frigo
William Stanfield 3 C.C.
Jacob Smith Mkr.

Thomas J. McArthur D.S.
December 16th 1822
February 21st 1823

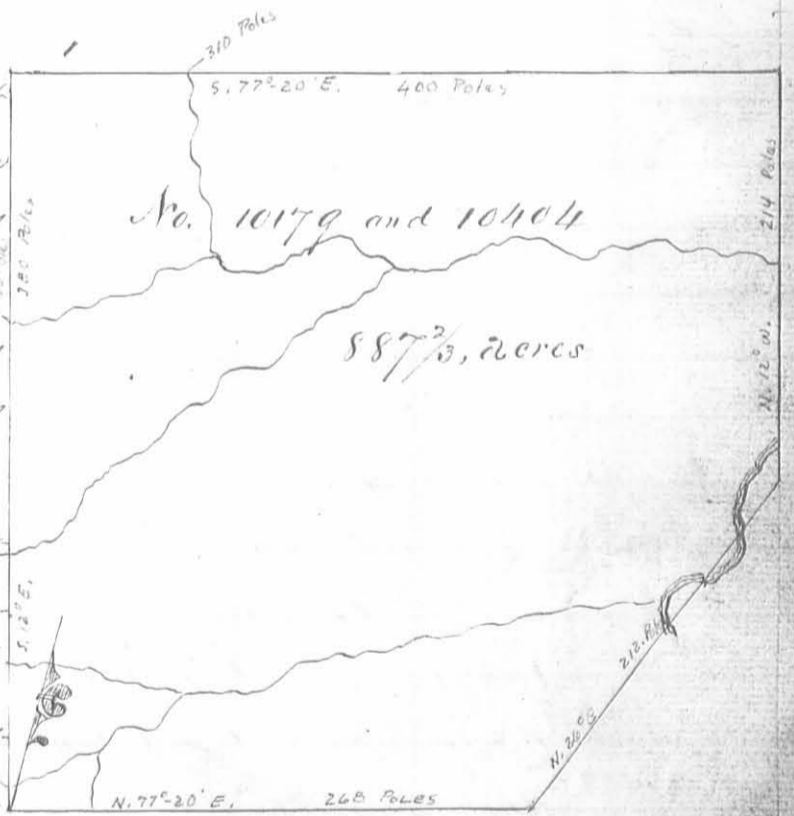


Surveyed for John Slaughter and John Jones 200 acres of land on two military warrants; Slaughter 100 acres on No 8305 and Jones 100 acres on No 5353 on the south fork of Mea cat, beginning at an ash and two lymus a southerly corner to Philip Stewart survey No 9957; thence with his line N. 78 E 160 poles crossing a drain at 3 and the fork at 98 poles to three beeches in said line; thence S 12 E 200 poles crossing the fork at 118 a small branch at 174 and the fork at 188 poles to a forked white oak and two hickories saplings; thence S. 78. W 160 poles crossing the fork at 14 poles to a red oak and lymus; thence N. 12. W 200 poles passing a southerly corner of Stewart said survey at 75 poles and with his line to the beginning.

Hiram Perkins
 Theodore McDowell S. C. C.
 Hango Chapman Mks.

Samuel Forrer D. S.
 June 8th 1822
 July 26th 1822

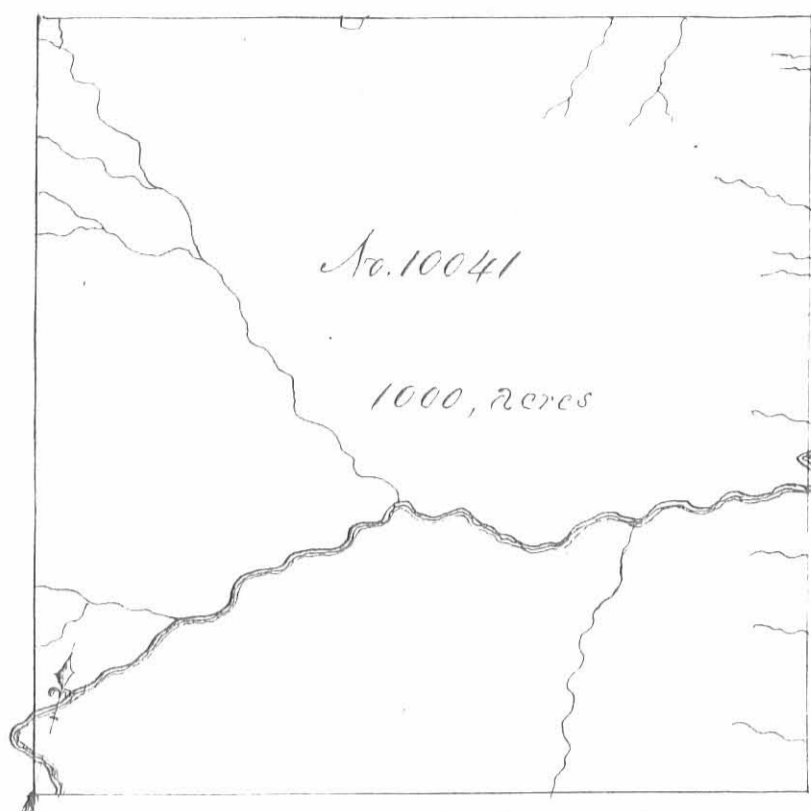
Surveyed for Duncan M Arthur, Robert Means Sr, Joseph Nite, Abraham Bowman George Nandy and George Ryan 887 2/3 acres of land on part of nine military warrants M Arthur 290 acres, 260 on No 5811, 30 acres on No. 1451; Means 297 2/3 acres, 267 2/3 acres on No. 5344, 75 acres on No 5769, 15 acres on No 5470; Nite 106 acres on No 5809; Bowman 96 acres on No 5867; Nandy 68 acres on No 5336 and Ryan 30 acres on No. 6071 on Rush Creek; beginning at two sugar tree and a large white elm, southeas-



terly corner to Walter Duns survey No. 9885 in the Greenville Treaty line; thence with said line N. 77° 20' E. 268 poles crossing a forked spring and several small branches to two elms east of Duntherland's fence; thence N. 26. E. 212 poles crossing Rush creek three times to a stake in the west line of Jamison and other survey No. 9887; thence N. 12. W 214 poles crossing the creek and a large branch to a blue ash beech and sugar tree thence S. 77° 20. W. 400 poles crossing a drain at 310 poles to three bar oaks and a beech on the north side of a swamp; thence S. 12. E. 380 poles crossing a branch at 130 one at 310 and a drain at 365 poles to the beginning

George McCulloch
 George Henry S. C. C.
 Samuel Hager Mks.

Thomas S. M Arthur D. S.
 January 1st 1821
 March 28th 1821



Surveyed for Richard Stearns
1000 acres of land on two Military
warrants No. 4962 and 4963 on
Rush Creek; beginning at a small
buckeye, small sugar tree and white
walnut on the east bank of the creek
south east corner to the represent a-
tions of Cand Wallace and others
entry No. 9934, thence N. 12 E 400
poles crossing the creek at 30 and
at 34 poles and several more branches
to three beeches; thence S. 78. E 400
poles crossing a small branch at

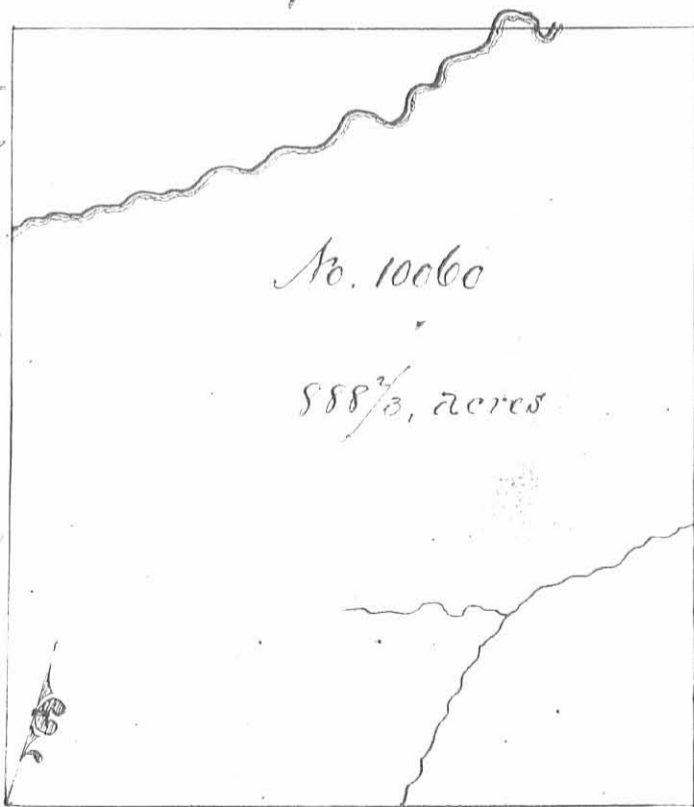
30 and at 300 and the Sandusky road at 372 poles to three beeches; thence
S. 12 E. 400 poles crossing several drains and Rush Creek from 230 to
250 poles and a branch at 378 poles to three beeches; thence S. 78. W
400 poles crossing a branch at 104 poles the road at 290, the creek
at 204 poles to the beginning.

George M. Colbeck 3
George Henry 3 C.C.
Simon Hager M.k.r.

Thomas M. Arthur D.S.
January 25th 1821
March 28th 1821

Surveyed for James Taylor Esq^r and
William S. Pierce 888 $\frac{2}{3}$ acres on the follow-
ing Military Warrants; Taylor 533 $\frac{1}{3}$ acres
on No. 5465 and Pierce 555 $\frac{1}{3}$ acres on No.
5888 on Rush Creek; Beginning at a
buckeye and two ashes on the side of
a road north west corner to James
Taylor's survey No. 9914; thence with
said line N. 78 E 556 poles crossing a
branch at 200 poles to a hickory and
two beeches; thence N. 12 W 400 poles
crossing said branch at 140 poles to an
ash and two hickories in the line of
Alexander Parkers survey No. 9958, thence with said line S. 78 W. 300 poles cross-
ing the creek at 70, at 88 and at 90 poles to a sugar tree and two beeches north east corner to Row-
land Macarons survey No. 9938, thence with said line S. 12 E 400 poles crossing the creek
at 102 poles to the beginning.

Levi D. Sharp 3
Nehemiah Corbin 3 C.C.
Wilson S. Thompson M.k.r.



Sam^l Fowler D.S.
January 22, 1820
July 24, 1820