

Survey Lester Powers addition to Belle Center (Wm Gossard 13.02A)

Oct. 8-1/2 day, 9-1 day, 10, 1 day - 1912

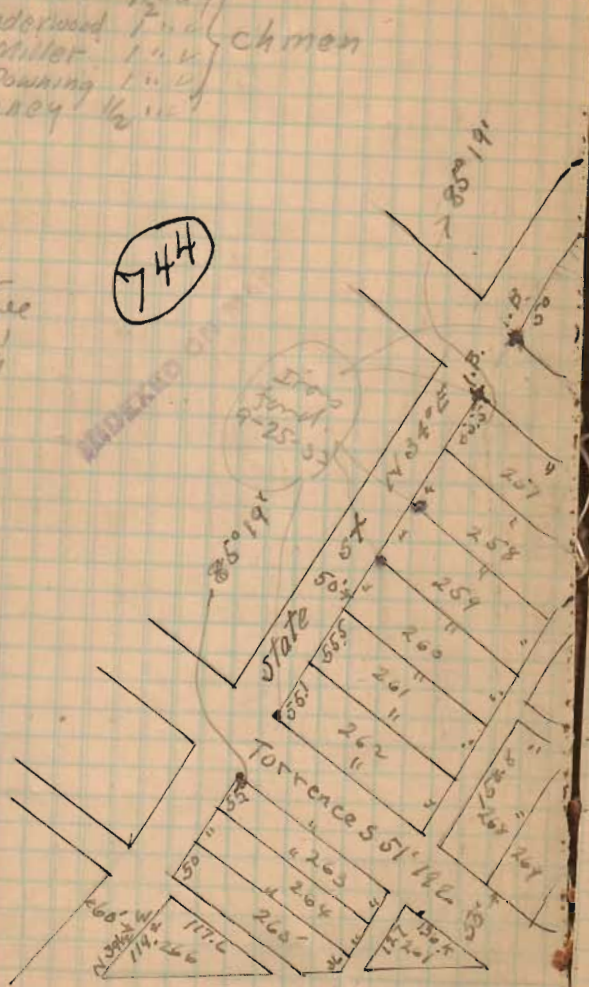
Jeff. Sickles 1/2 day
 Cash Underwood 1/2 day
 Dwight Miller 1/2 day
 Frank Downing 1/2 day
 Bob Blaney 1/2 day

Chmen

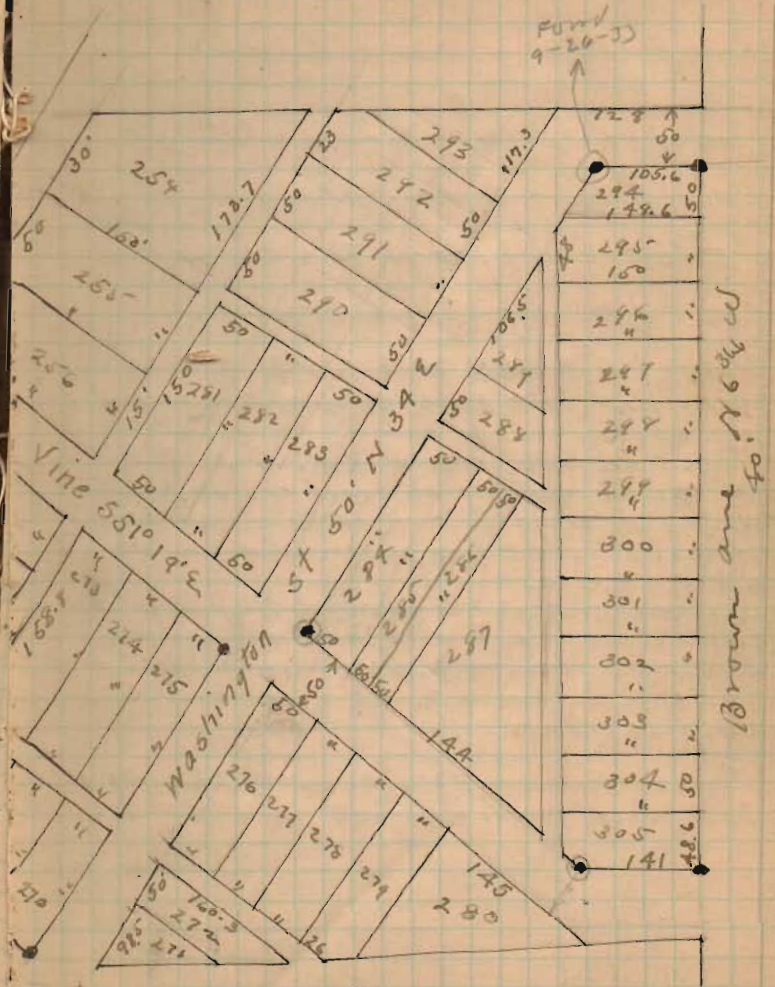
For Vine
 St. Later
 Survey see
 Book SD 1
 Page 79

744

MIDLAND DISTRICT



Rain and very windy on 9 and 10.



• = Iron bars

Brown are 1/2 day