

684.75
LINE C

PLANTED LIMESTONE
5 x 5 x 14
ON SURVEY LINE

1385 IP
INDEXED ON MAP

SMITH AND LIVINGSTON SURVEY
V. M. S. 14032
RICHLAND TOWNSHIP
See Book 97 Page 22-24

1646.7' LINE D
7174.2' LINE G
STONE 5x5x14"

BEREASTONE
4x6x15"
STONE 2x14x8
SHELL HICKORY

LIME STONE 3" THICK 23.1' W
OF C OF PIKE AT 405.9

BELL CENTER KENTON PIKE
WHOLE DISTANCE 1955.58
LINE B.

382.8' LINE H

RAIL ROAD
LINE E

F LINE STARTS 20 LINKS
EAST OF C RAIL ROAD AND
FALLS 20 LINKS EAST OF 1ST STONE

872.52' LINE P
WHOLE DISTANCE

316'

HILLSTOWN PIKE

7-12-17

Lee Surveying and Mapping Co., Inc.



Land Surveys • Topography • Subdivisions • Construction Layout

117 N. Madriver St.
Bellefontaine OH 43311



Phone: (937) 593-7335
Fax: (937) 593-7444
surveys@lsminc.us

WOOD 3.280 ACRES

Lying in Virginia Military Survey 14032, Village of Belle Center, Richland Township, Logan County, Ohio.

Being out of the Rodney D. Wood and Paula R. Wood 9.91 acre tract as deeded and described in Official Record 791, Page 811 of the Logan County Records of Deeds and being more particularly described as follows:

Beginning on a 5/8 inch iron rod found on the intersection of the center-line of Charles Street and the north right-of-way of Franklin Avenue (40 feet wide) extended.

THENCE, with the center-line of Charles Street (50 feet wide), N 07°-56'-36"W, a distance of 320.09 feet to a MAG nail set.

THENCE, N 38°-09'-55"E, a distance of 361.93 feet to a 5/8 inch iron rod set, passing a 5/8 inch iron rod set at 34.66 feet.

THENCE, S 51°-50'-46"E, a distance of 286.20 feet to a 5/8 inch iron rod set on an easterly line of the Village of Belle Center Corporation line.

THENCE, with an easterly line of the Village of Belle Center Corporation line and said line extended and the west line of the Chris Conley 5.52 acre tract (O.R. 1082, Pg. 415) and the Village of Belle Center, Logan County, Ohio, 11.14 acre tract Vol. 162, Pg. 113), S 38°-11'-33"W, a distance of 637.03 feet to a MAG nail set on the center-line of Charles Street, passing a 5/8 inch iron rod set at 601.84 feet.

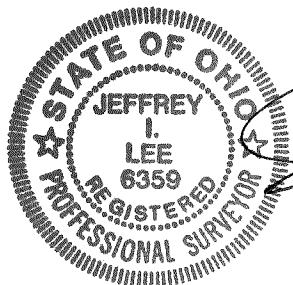
THENCE, with the center-line of Charles Street, N 07°-56'-36"W, a distance of 76.63 feet to the point of beginning.

Containing 3.280 acres, of which 0.228 acre is within the highway right-of-way.

Property is subject to any and all previous easements and rights-of-way of record.

The basis for bearings is the center-line of Charles Street, being N 07°-56'-36"W, and all other bearings are from angles and distances measured in a field survey by Lee Surveying and Mapping Co., Inc. on July 5, 2017.

Description prepared by:



Jeffrey I. Lee
Professional Surveyor 6359
July 7, 2017

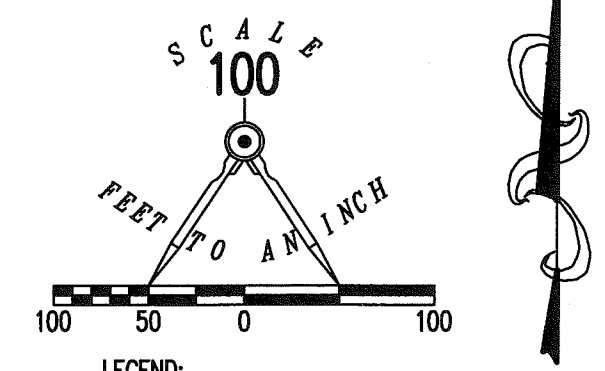
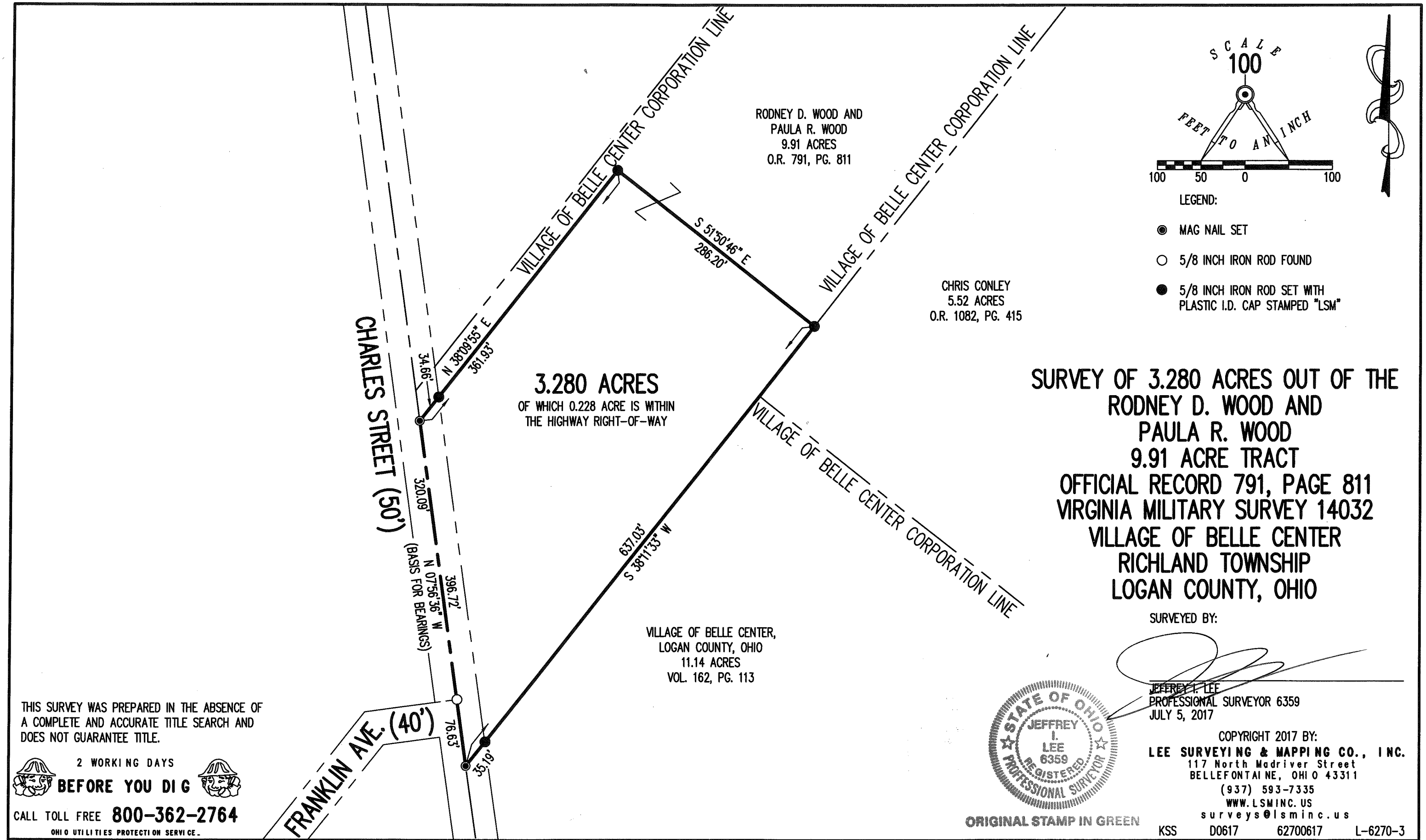
62700617

ORIGINAL STAMP IN GREEN

INDEXED ON MAP

1385

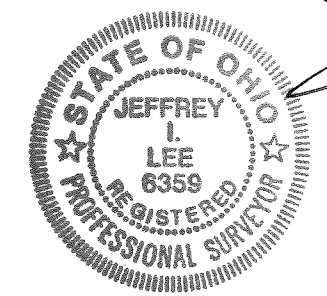
7-12-17
APPROVED



**SURVEY OF 3.280 ACRES OUT OF THE
RODNEY D. WOOD AND
PAULA R. WOOD
9.91 ACRE TRACT
OFFICIAL RECORD 791, PAGE 811
VIRGINIA MILITARY SURVEY 14032
VILLAGE OF BELLE CENTER
RICHLAND TOWNSHIP
LOGAN COUNTY, OHIO**

SURVEYED BY:

JEFFREY I. LEE
PROFESSIONAL SURVEYOR 6359
JULY 5, 2017



ORIGINAL STAMP IN GREEN

COPYRIGHT 2017 BY:
LEE SURVEYING & MAPPING CO., INC.
117 North Madriver Street
BELLEFONTAINE, OHIO 43311
(937) 593-7335
WWW.LSMINC.US
surveys@lsminc.us
KSS D0617 62700617 L-6270-3

THIS SURVEY WAS PREPARED IN THE ABSENCE OF
A COMPLETE AND ACCURATE TITLE SEARCH AND
DOES NOT GUARANTEE TITLE.

2 WORKING DAYS
BEFORE YOU DIG
CALL TOLL FREE **800-362-2764**
OHIO UTILITIES PROTECTION SERVICE

INDEXED ON MAP
1385