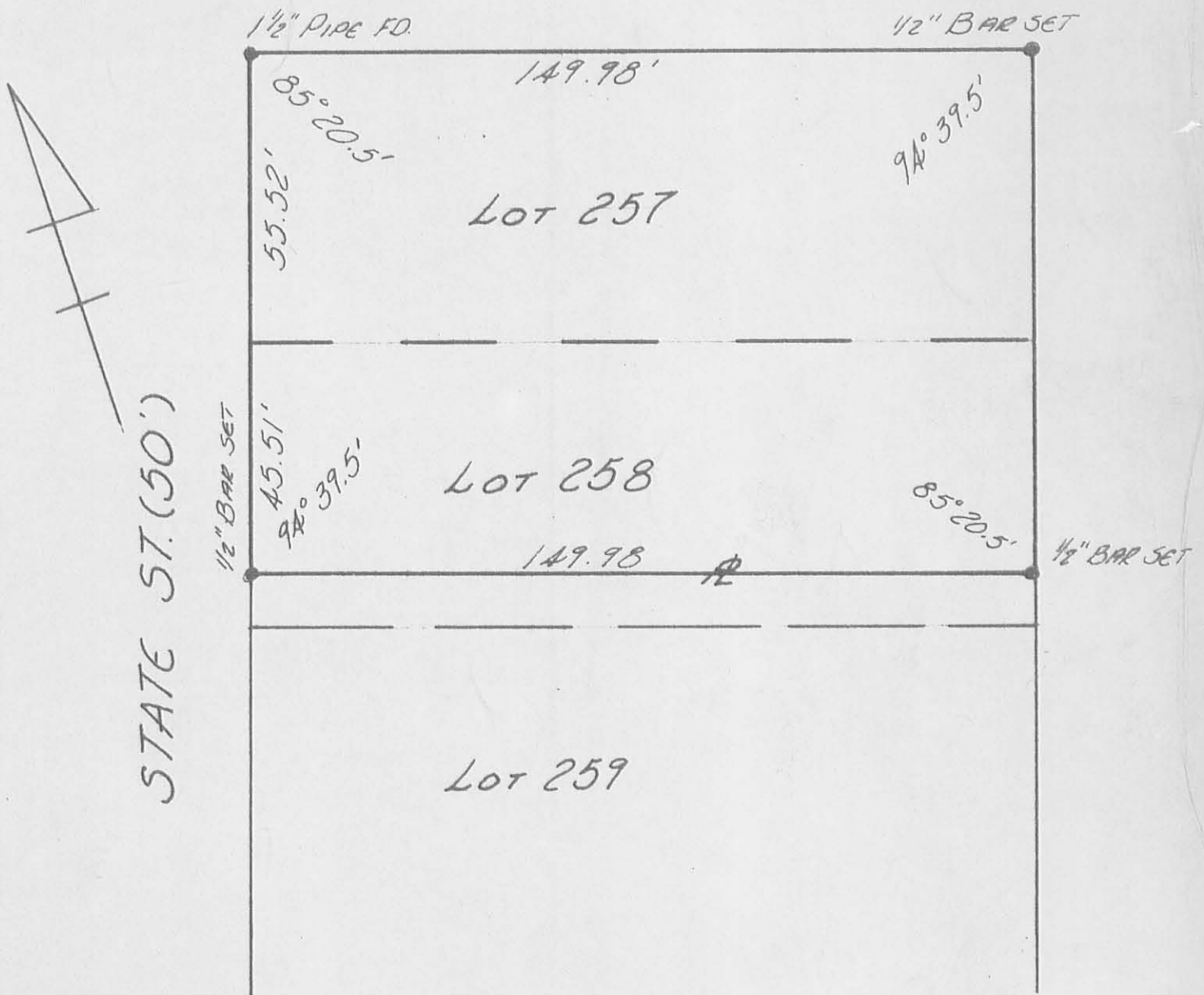


VINE ST. (50')



SURVEY OF LOT 257 & PT. 258

LESTER AND POWERS ADD.

BELLE CENTER, OHIO

AUG. 16, 1969

SCALE 1" = 30'

INDEXED ON MAP

4532 IP

LESLIE H. GEESLIN  
REG. SURVEYOR 5248