

Received 8-5-88

LESLIE H. GEESLIN
REGISTERED SURVEYOR NO. 5248
P. O. BOX 274
RUSHSVLVANIA, OHIO 43347

TELEPHONE: (513) 468-2793

ANSLEY SURVEY

August, 1988



Leslie H. Geeslin

The following described real estate situated in the State of Ohio, County of Logan, Township of Richland, being part of Virginia Military Survey 9989 in the Village of Belle Center and more particularly described as follows;

Beginning at a point in the centerline of Main Street at the southeast corner of Dana Dickinson's 0.36 acre tract as described in O. R. Vol. 11 Page 331.

Thence with said Dickinson's east line N. 34° 34' E. 127.32 feet to a 0.625 inch iron bar, passing a harrow tooth at 32.65 feet.

Thence with the south line of Linda Wintersteller's 0.33 acre tract as described in D. B. Vol. 382 Page 994, the south line of Ronald Tevis' 0.50 acre tract as described in D. B. Vol. 408 Page 766, and a south line of David James' 0.07 acre tract as described in D. B. Vol. 406 Page 944 S. 54° 25' 56" E. 197.77 feet to a 0.625 inch iron bar.

Thence with the west line of said James and the west line of C. W. Stephenson's 0.12 acre tract as described in O. R. Vol. 20 page 222 S. 35° 19' 40" W. (this bearing is assumed and all other bearings are from angles and distances measured in this field survey) 139.43 feet to a 0.625 inch iron bar in the north line of Main Street.

Thence with said north line N. 50° 55' 20" W. 83.00 feet to a point.

Thence S. 34° 04' 40" W. 30.11 feet to a point in the centerline of Main Street.

Thence with said centerline N. 36° 29' 39" W. 119.90 feet to the place of beginning.

Containing 0.642 acre more or less.

The above described 0.642 acre tract being the same parcels described in D. B. Vol. 147 Page 53 and D. B. Vol. 392 Page 207.



LEGEND:

- A = HARROW TOOTH FD.
- B = 5/8" IRON BAR FD.
- C = 5/8" IRON BAR SET

DANA DICKINSON
 0.36 AC.
 DB VOL 11 PG 331
 OR VOL 11 PG 331

LINDA WINTERSTELLER
 0.33 AC.
 DB VOL 332 PG 994

RONALD TEVIS
 0.50 AC.
 D.B. VOL 408 PG 766

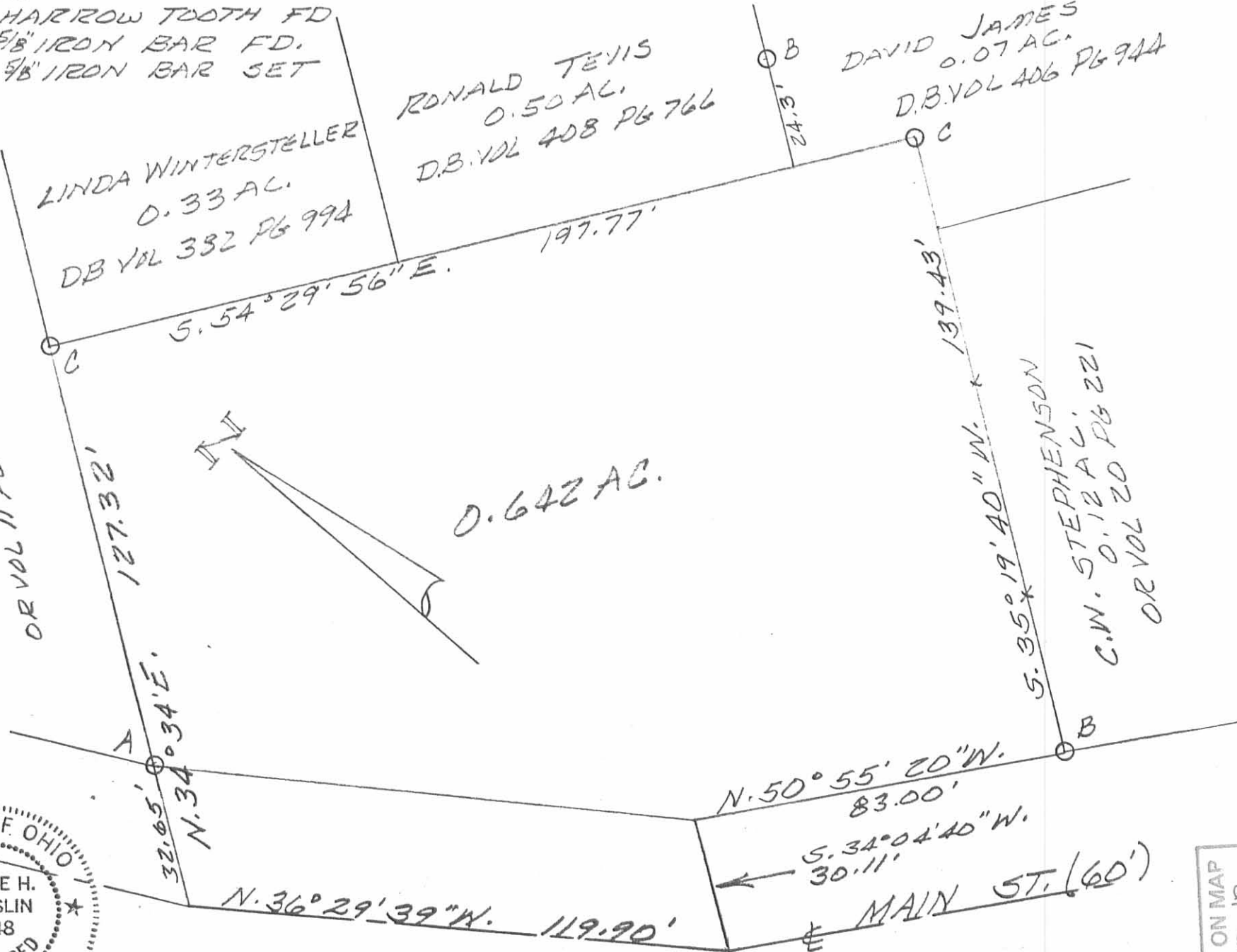
DAVID JAMES
 0.07 AC.
 D.B. VOL 406 PG 944

C.W. STEPHENSON
 0.12 AC.
 DB VOL 20 PG 221
 OR VOL 20 PG 221

0.642 AC.



Leslie H. Geeslin
 LESLIE H. GEESLIN
 RUSHSVLVANIA, OHIO



SURVEY OF 0.642 AC. TRACT
 IN VIRGINIA MILITARY SURVEY 9989,
 VILLAGE OF BELLE CENTER, RICHLAND
 TOWNSHIP, LOGAN COUNTY, OHIO.
 AUGUST, 1988
 SCALE: 1" = 30'

INDEXED ON MAP
 7817 IP