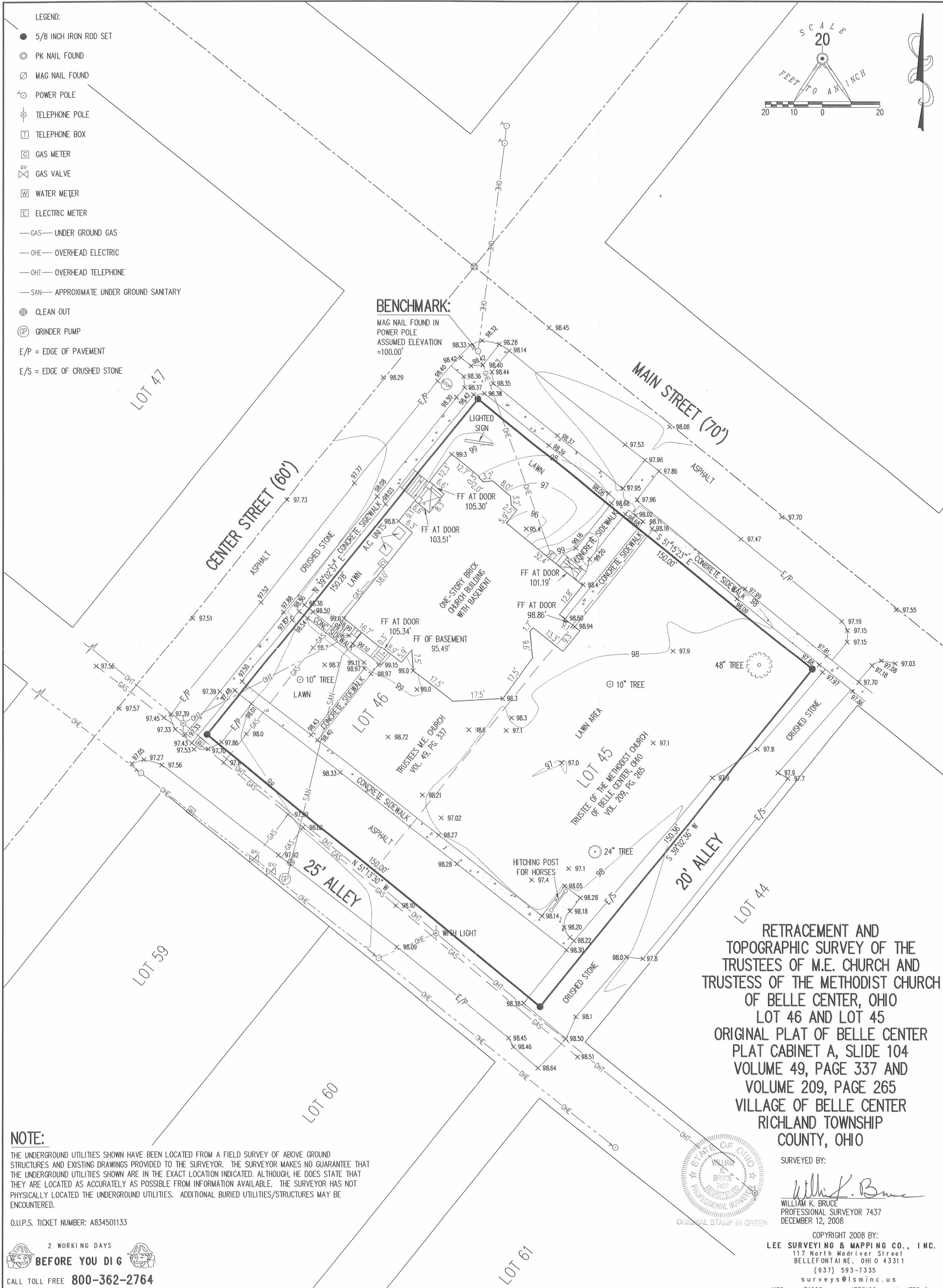
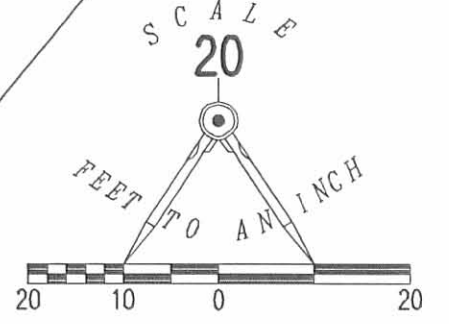


REV'D 1-12-09 SMY & LC

LEGEND:

- 5/8 INCH IRON ROD SET
- ⊙ PK NAIL FOUND
- ⊗ MAG NAIL FOUND
- ⊕ POWER POLE
- ⊕ TELEPHONE POLE
- ⊕ TELEPHONE BOX
- ⊕ GAS METER
- ⊕ GAS VALVE
- ⊕ WATER METER
- ⊕ ELECTRIC METER
- GAS — UNDER GROUND GAS
- OHE — OVERHEAD ELECTRIC
- OHT — OVERHEAD TELEPHONE
- SAN — APPROXIMATE UNDER GROUND SANITARY
- ⊕ CLEAN OUT
- ⊕ GRINDER PUMP
- E/P = EDGE OF PAVEMENT
- E/S = EDGE OF CRUSHED STONE



BENCHMARK:

MAG NAIL FOUND IN
POWER POLE
ASSUMED ELEVATION
=100.00'

RETRACEMENT AND
TOPOGRAPHIC SURVEY OF THE
TRUSTEES OF M.E. CHURCH AND
TRUSTESS OF THE METHODIST CHURCH
OF BELLE CENTER, OHIO
LOT 46 AND LOT 45
ORIGINAL PLAT OF BELLE CENTER
PLAT CABINET A, SLIDE 104
VOLUME 49, PAGE 337 AND
VOLUME 209, PAGE 265
VILLAGE OF BELLE CENTER
RICHLAND TOWNSHIP
COUNTY, OHIO



SURVEYED BY:
William K. Bruce
WILLIAM K. BRUCE
PROFESSIONAL SURVEYOR 7437
DECEMBER 12, 2008

NOTE:
THE UNDERGROUND UTILITIES SHOWN HAVE BEEN LOCATED FROM A FIELD SURVEY OF ABOVE GROUND STRUCTURES AND EXISTING DRAWINGS PROVIDED TO THE SURVEYOR. THE SURVEYOR MAKES NO GUARANTEE THAT THE UNDERGROUND UTILITIES SHOWN ARE IN THE EXACT LOCATION INDICATED. ALTHOUGH, HE DOES STATE THAT THEY ARE LOCATED AS ACCURATELY AS POSSIBLE FROM INFORMATION AVAILABLE. THE SURVEYOR HAS NOT PHYSICALLY LOCATED THE UNDERGROUND UTILITIES. ADDITIONAL BURIED UTILITIES/STRUCTURES MAY BE ENCOUNTERED.

O.U.P.S. TICKET NUMBER: AB34501133

2 WORKING DAYS
BEFORE YOU DIG
CALL TOLL FREE **800-362-2764**
OHIO UTILITY PROTECTION SERVICE

COPYRIGHT 2008 BY:
LEE SURVEYING & MAPPING CO., INC.
117 North Madriver Street
BELLEFONTAINE, OHIO 43311
(937) 593-7335
surveys@lsminc.us
KSS D1208 4735128 L-4735-2

INDEXED ON MAP
9587 1P

lot No. 42

Belle Center

lot # 42, except 45' off of North

lots 75x.150

On	From	To	Dist	Plot	±
Center	Main	Walnut	325.9	325.0	+0.9
main	Center	State	490.0	490.0	0
State	main	Walnut	326.0	325.0	+1.0'
Walnut	State	Center	490.0	490.0	0

Cont'd pg. 16

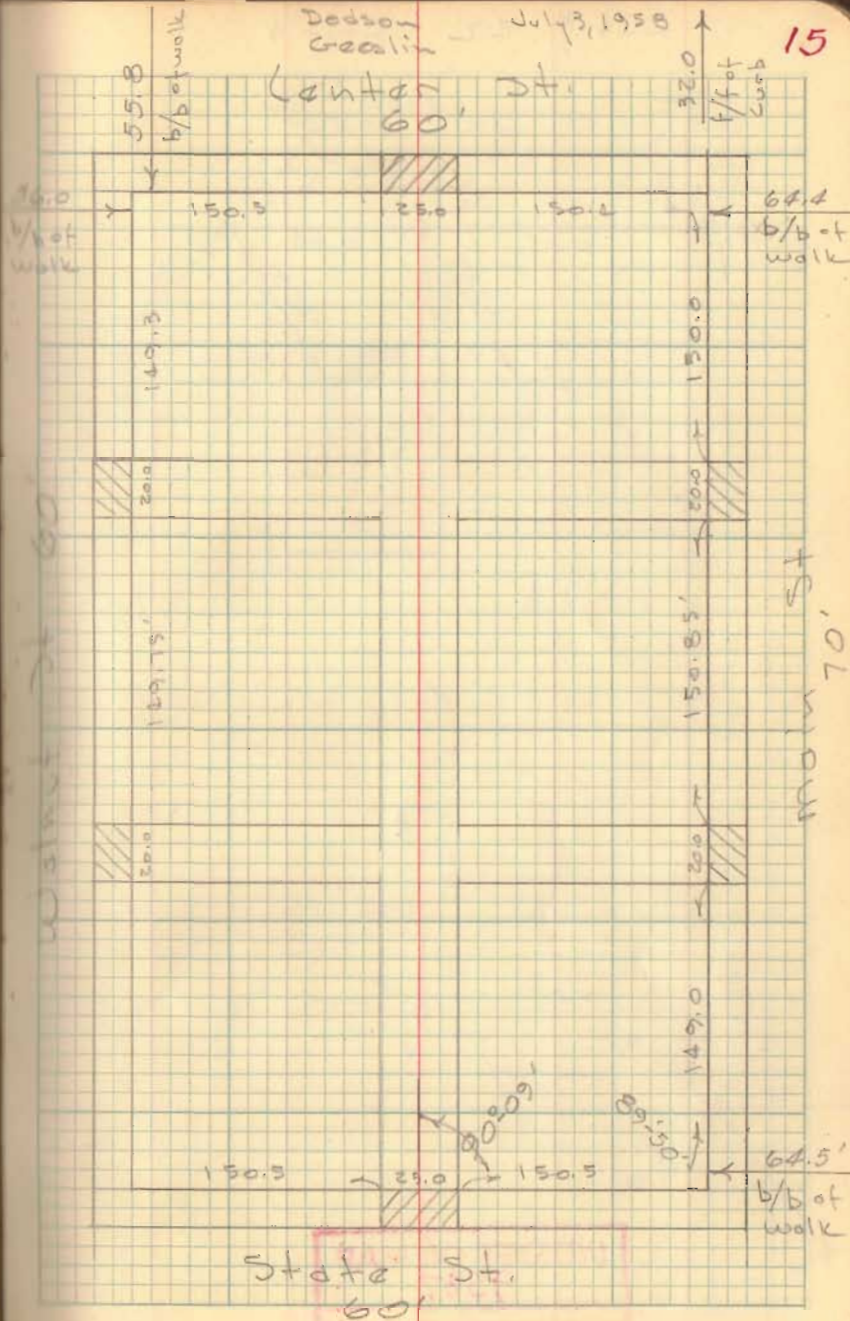
INDEXED ON MAP
9587

Dedson
Gealin

July 3, 1958

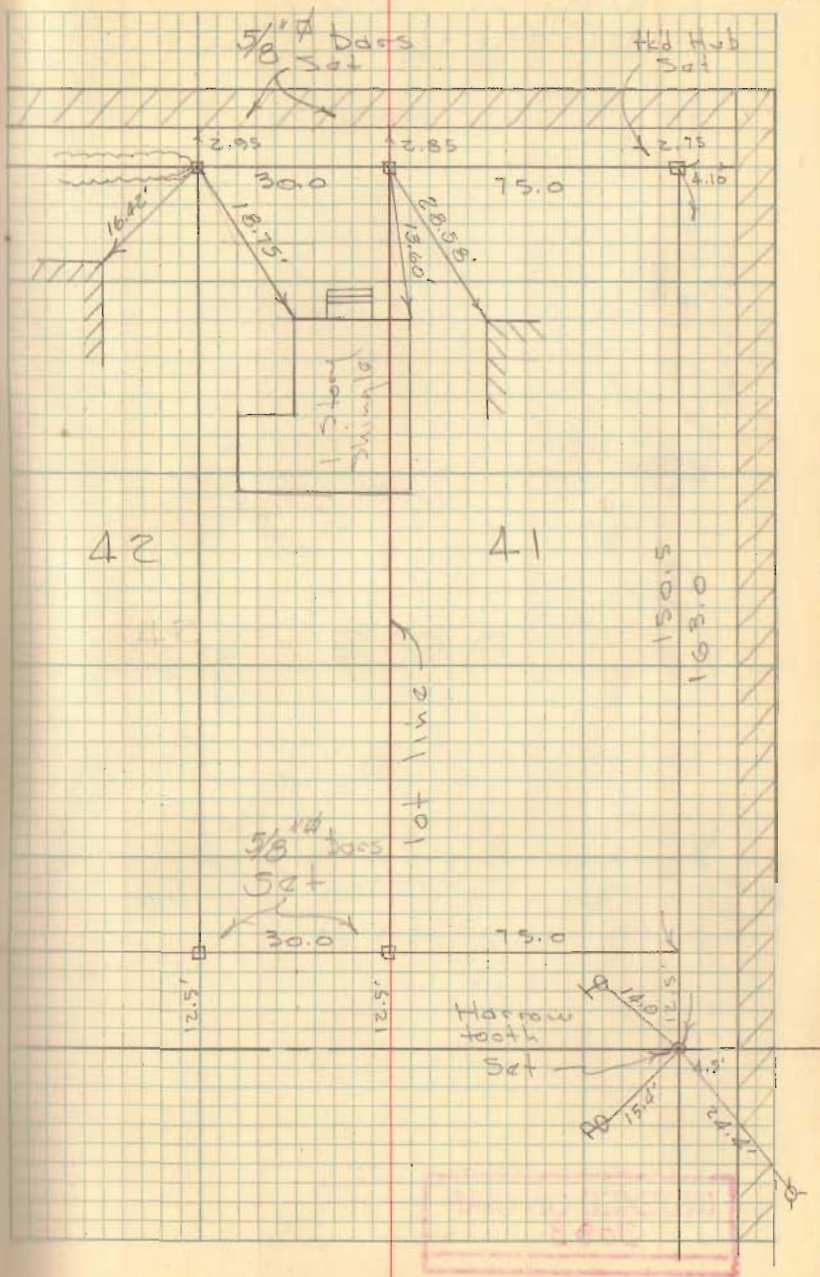
15

Center St.
60'



Lot # 42 Cont'd

16



INDEXED ON MAP
9587

INDEXED ON MAP
9587



149.30
149.75
40
339.05

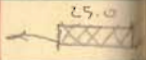
480.00
339.05
819.05

Mean: 490.0
Walk 60
149.75
20.0
20.0

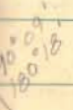


INDEXED ON MAP
9587

Center St
60'

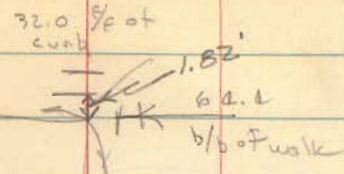


25' Alley



Harrow foot set
Plate
60
St.

325.0 (Mean: 326.0)



66

150.0
150.85
128.65
40.00
489.50

150.50
2.75
12.30
165.55

150
148.65
149.00

Mean: 70

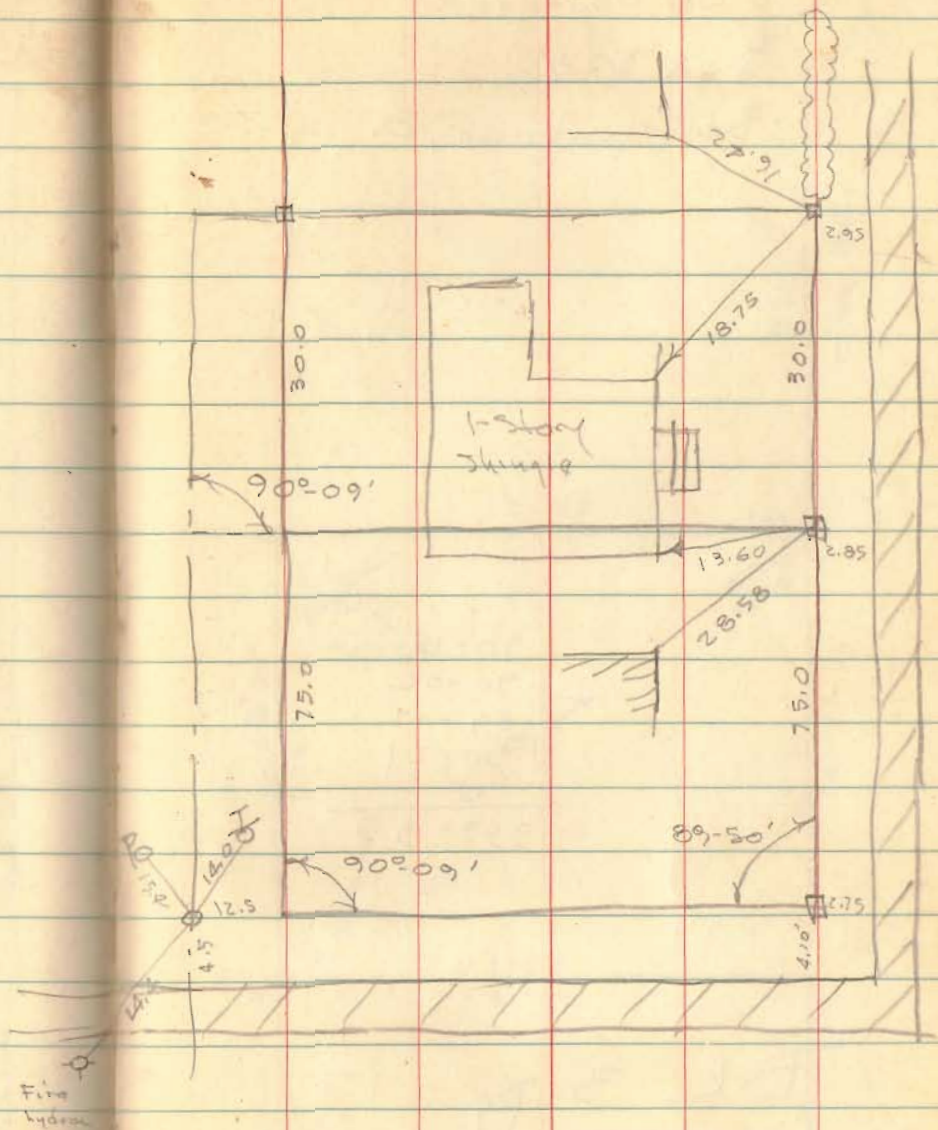
Plot = 490.0

Mean: 489.50
- 0.50

made block 490.0

340
45
385
40
415

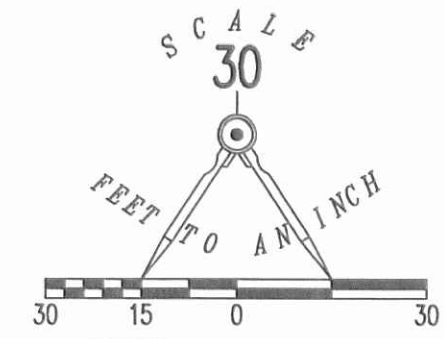
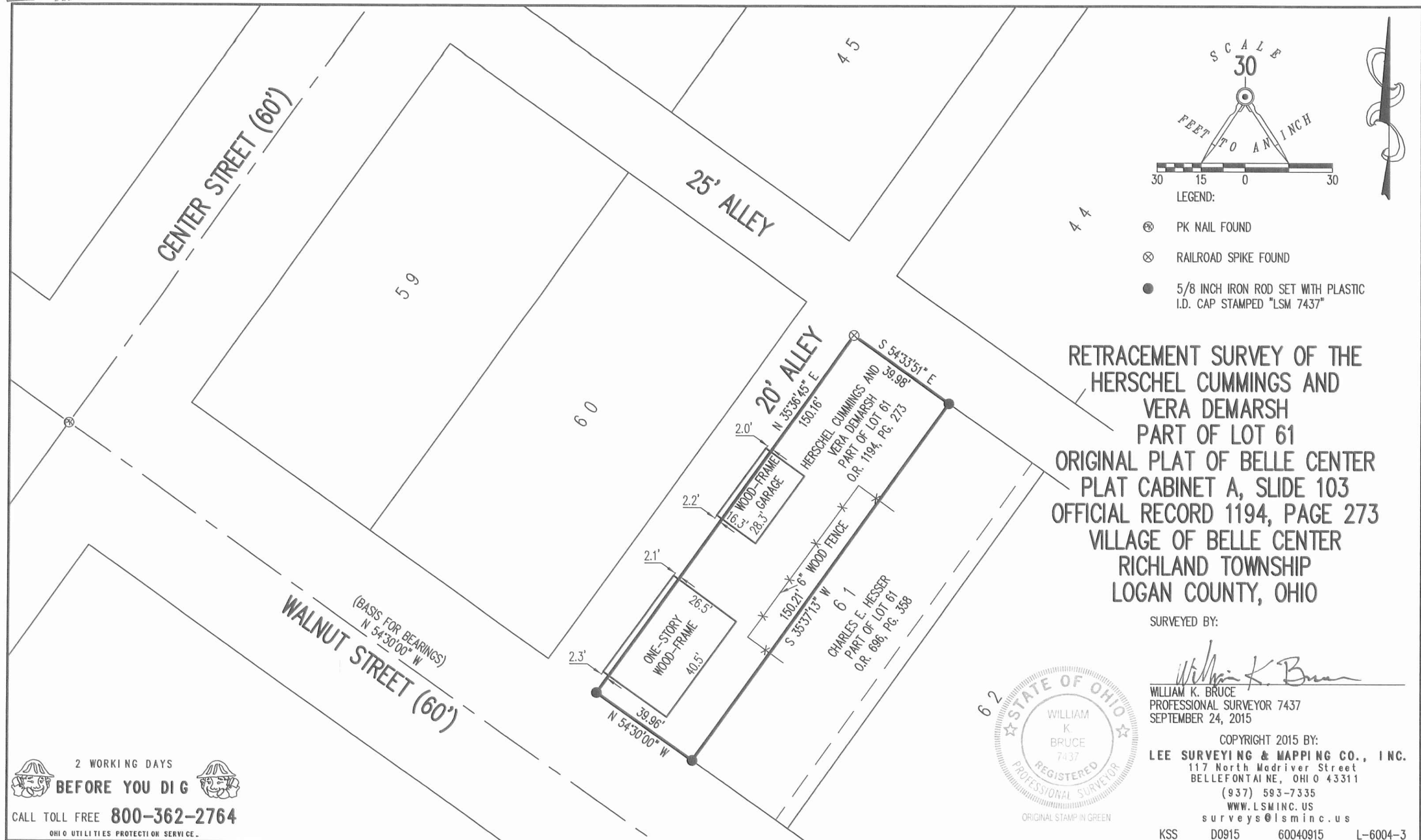
Bl # 3, P 916



INDEXED ON MAP
9587

10-1-15

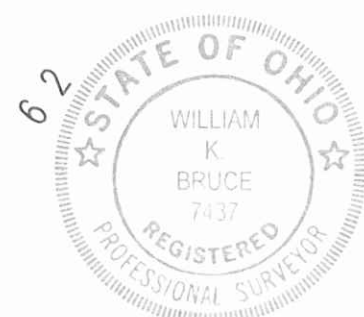
APPROVED



- LEGEND:
- ⊗ PK NAIL FOUND
 - ⊗ RAILROAD SPIKE FOUND
 - 5/8 INCH IRON ROD SET WITH PLASTIC I.D. CAP STAMPED "LSM 7437"

RETRACEMENT SURVEY OF THE
HERSCHEL CUMMINGS AND
VERA DEMARSH
PART OF LOT 61
ORIGINAL PLAT OF BELLE CENTER
PLAT CABINET A, SLIDE 103
OFFICIAL RECORD 1194, PAGE 273
VILLAGE OF BELLE CENTER
RICHLAND TOWNSHIP
LOGAN COUNTY, OHIO

SURVEYED BY:
William K. Bruce



WILLIAM K. BRUCE
PROFESSIONAL SURVEYOR 7437
SEPTEMBER 24, 2015

COPYRIGHT 2015 BY:
LEE SURVEYING & MAPPING CO., INC.
117 North Madriver Street
BELLEFONTAINE, OHIO 43311
(937) 593-7335
WWW.LSMINC.US
surveys@lsminc.us

2 WORKING DAYS
BEFORE YOU DIG
CALL TOLL FREE **800-362-2764**
OHIO UTILITIES PROTECTION SERVICE.

INDEXED ON MAP
9587 2P

KSS D0915 60040915 L-6004-3