

Smith's foot survey, Park St

R. P. STUDLEY & Co., Manufacturing

STATION. ALIGNMENT. DEFLECTION. REMARKS.

INDEXED ON MAP 35

STATION	ALIGNMENT	DEFLECTION	REMARKS
	High	Ave 50'	M
	220	50 55 55 55	
	630		
	629	650 649 648 647	
	628		
	629		
	626		
	625	657	
	624		
	620		
	Brown Ave 50' x 40'		

- MM also Park St & Brown St = 90° 10'
- Start at Iron Cent Park St S. of cent Brown Ave
 New Park St. at 25' x side Brown Ave at 250' x dist out
 at 284.2' N. line lot 654. at 432.4' Iron cent High Ave
 - Start at Iron Mad River & Brown. 60' Brown 5' S of cent line
 at 504.7' Iron cent Park St. at 429.9' x W line lot 654
 - Start at 234.2' of W. line on 90' on side alley.
 at 20' set 60' spike at E. end lot 654
 - Start at 60' spike 20' of (3). 50' to line lot 654. at 60' - SE < 60' line
 - Start at 7' E of 49' plat. at 78.8' set stake < N. W. of Smith
 - Start at 7' 7.8' of (5) S. with W. line Smith at 40' set V < Smith
 - Start at 7' 60' of (4). 50' S line lot. at 45' set 9' S. S. Mark P. 100' < Smith
 - 45' of (4) then on W. line Smith & Mark at 62.8' set 7' 60' 10'
 - Start at 7' S. W. Mark = 40' of (6). 6' 16' to < Smith & W. Mad
 Paid Feb. 1912

Record Street-Centers Perpetuated

TOPOGRAPHY.

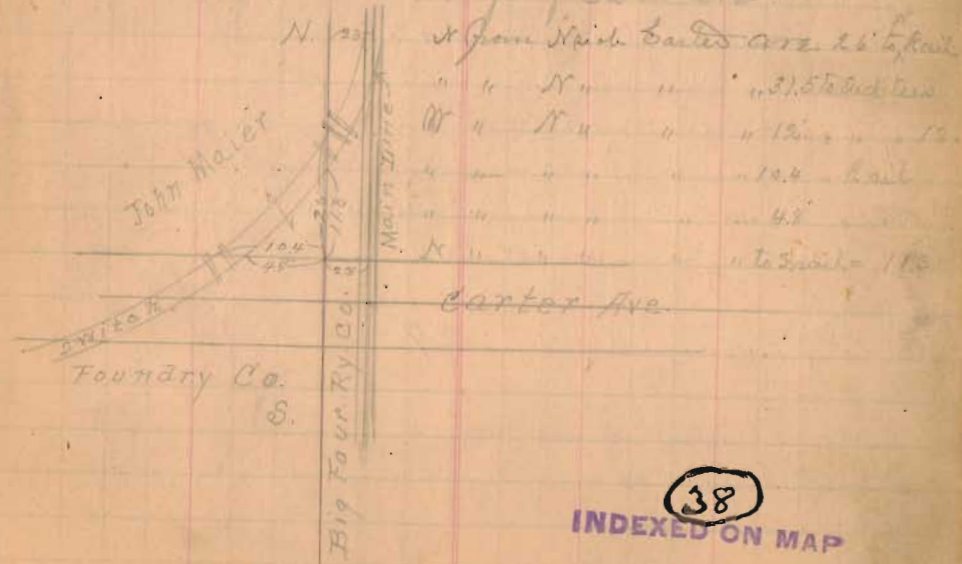
INDEXED ON MAP 36

At Green & High Ave. May 17-1916
 Third old pin bent and dislocated. set new iron pin at corner center

INDEXED ON MAP 37

Mad River & High Ave. St. May 17-1916
 Old iron pin 7" below top Mc. Adams surf. of street
 S end Iron Inlet & side Mad River curb N.E. = 28.8'
 Center manhole cover storm sewer: N.W. = 27.5'

John Meyers Survey. Carter Ave & Big 4 Ry. June 9-11
 (1) Start at Iron pin cent Carter Ave & Inlet St.
 Thence W. on cent Carter Ave. at 505.4' set spike
 at 602.7' center main line Big 4 Ry
 " 625.7' N. line right of way Big 4 Ry
 " Meas N. 25' to N. edge of Carter Ave



INDEXED ON MAP 38