

Stanley Addition, Frank
 June 13 - 1916
 See page 89
 459-7
 R. P. STUDLEY & Co., Manufacturing

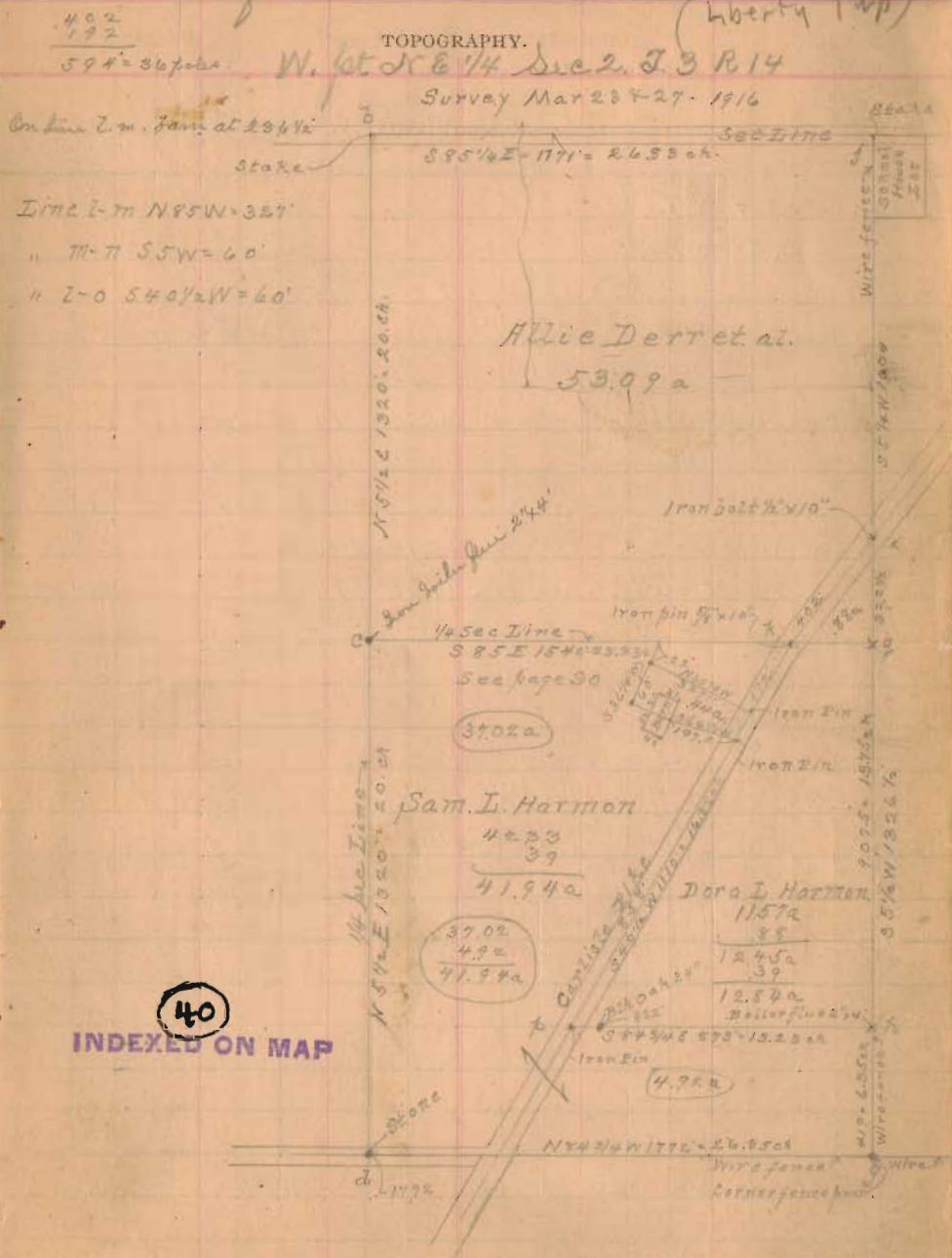
STATION. ALIGNMENT. DEFLECTION. REMARKS.

(1) Start at iron pin NW $\frac{1}{4}$ $\frac{1}{4}$ $\frac{1}{4}$ $\frac{1}{4}$ School grounds in
 1899.
 Distance 8 in. with another stake
 at 459.25 ft
 " 673.5 iron pin SW $\frac{1}{4}$ $\frac{1}{4}$ $\frac{1}{4}$ $\frac{1}{4}$
 " 698.5 center of Stanton Ave.
 NW $\frac{1}{4}$ $\frac{1}{4}$ $\frac{1}{4}$ $\frac{1}{4}$ = 81.55
 (2) Start at east Park at $\frac{1}{4}$ Stanton Ave. East on Stanton Ave
 at 97.6 pass N line Stake
 465.0 " " " " 365.40
 465.0 " " " " 365.40
 478.5 set stake
 Measure SE $\frac{1}{4}$ $\frac{1}{4}$ $\frac{1}{4}$ $\frac{1}{4}$ = 86.50 = 86.50
 (3) Start at NW $\frac{1}{4}$ $\frac{1}{4}$ $\frac{1}{4}$ $\frac{1}{4}$ Stake. Thence S on line to
 at 649.6 SE $\frac{1}{4}$ $\frac{1}{4}$ $\frac{1}{4}$ $\frac{1}{4}$ Stake
 675. center Stanton Ave.
 Center of Stanton Ave NW $\frac{1}{4}$ $\frac{1}{4}$ $\frac{1}{4}$ $\frac{1}{4}$
 Measure N line Stake = 233.5
 Run at SE $\frac{1}{4}$ $\frac{1}{4}$ $\frac{1}{4}$ $\frac{1}{4}$ = 13.
 at NW $\frac{1}{4}$ $\frac{1}{4}$ $\frac{1}{4}$ $\frac{1}{4}$ Stake 28' over
 Start at corner 450 to 3 and 49.5 to 2 in $\frac{1}{4}$ $\frac{1}{4}$ $\frac{1}{4}$ $\frac{1}{4}$ line
 Plat 2 is along on east of Stake NW $\frac{1}{4}$ $\frac{1}{4}$ $\frac{1}{4}$ $\frac{1}{4}$

Continued page 89

45
 INDEXED ON MAP

Harmon Survey from page 58.
 Plat of lands as divided
 (Liberty Twp)



40
 INDEXED ON MAP

Bellefontaine Cemetery Survey Mar. 1917
 Repeat N. central part.

STATION.	ALIGNMENT.	DEFLECTION.	REMARKS
----------	------------	-------------	---------

(14) Start at cut Road = 120 of (3) & 0 of 13
 Thence N 16° W. Angle to Left 106° 33' from 0 of (3)
 at 50' x West of line 4.4. at 100' x West 4' - height 4.6 x
 at 150' x West left 1'. at 200' x W Left 2'.
 at 250' x E - Right 5'. at 250' Left W 30' to W. side Road W.
 at 289.87 at wire fence at line cemetery. & West 7.4 from 7
 at N end line 4.

May 2nd 1917.

(15) Start at B in center & walk N. line 269 & 24
 Thence N on cut line 3' walk
 at 75.2 = 7 at 115.2 = 7 at 123.2 = 7 at 163.2
 = 171.2 = 7

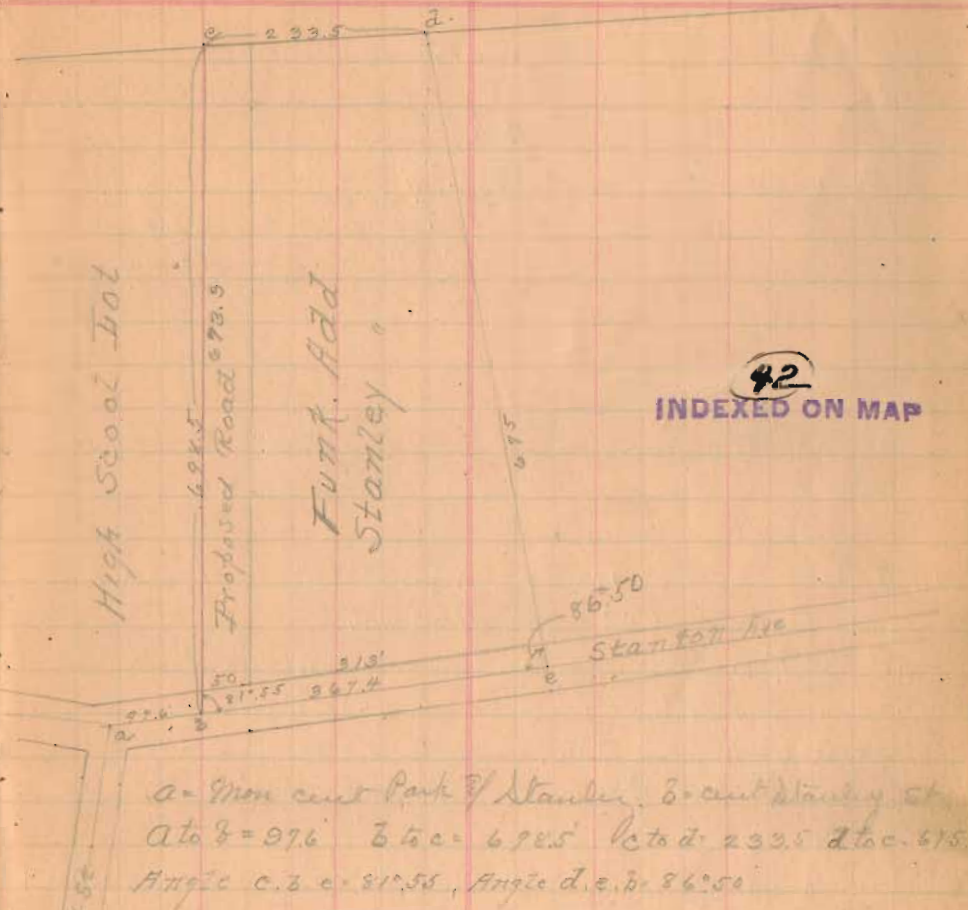
(16) Start at B in cut 8' walk = 0 of 15.
 Thence W.
 at 24' = 0 - at 91.6' = 0 at 71.6' = 0 at 99.6' = 7
 at 108.8' = 0 - E side of road. At 187.1' = 0 = 59° x 367.

(41)
 INDEXED ON MAP

Stanley Add. continued from page 78

Stationers, St. Louis, Mo.

TOPOGRAPHY.



(42)
 INDEXED ON MAP