

Replat. North central part

R. P. STUDLEY & Co., Manufacturing

X = center of Road. drive  
 STATION. ALIGNMENT. DEFLECTION. REMARKS.

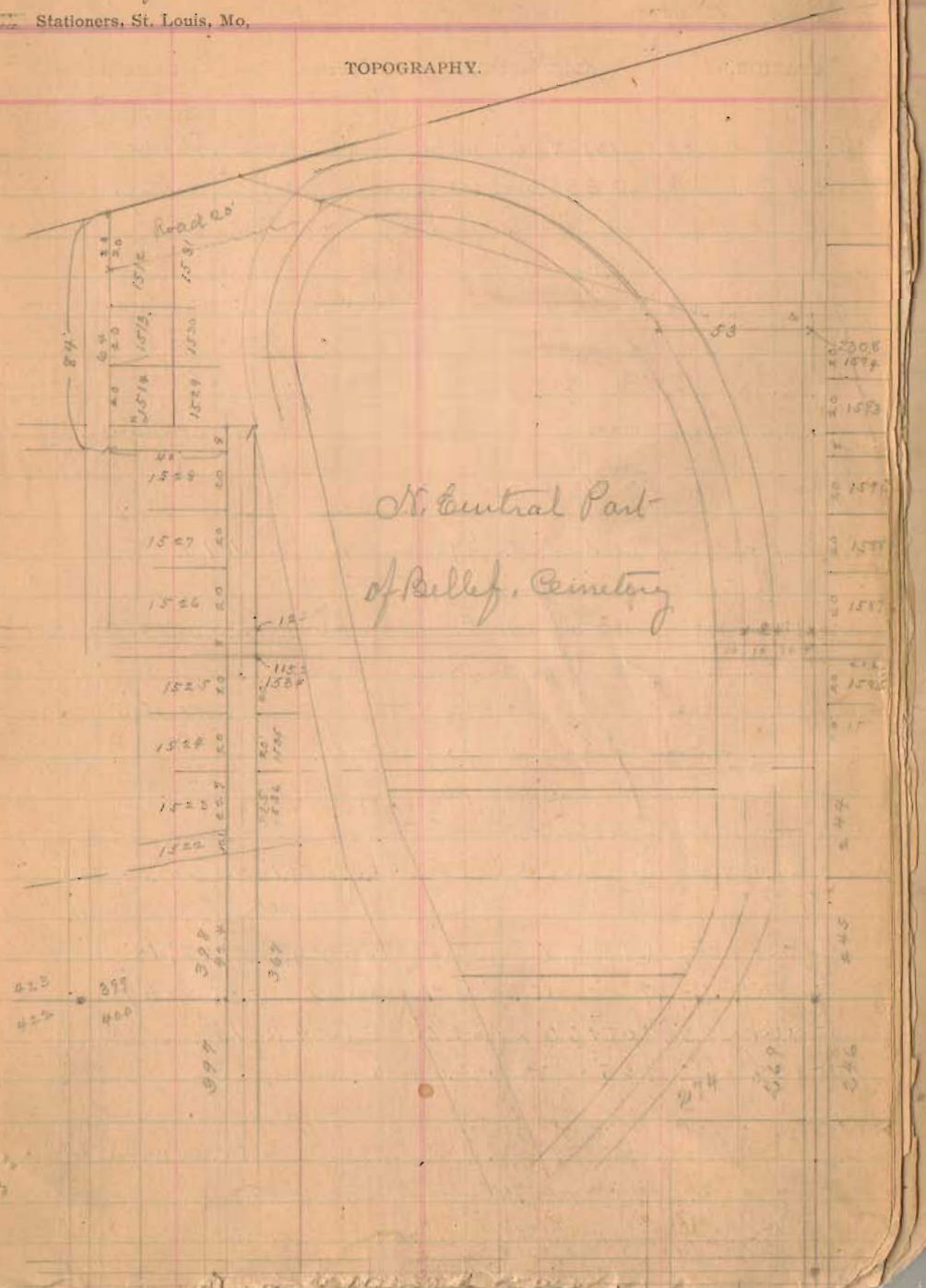
- (1) Start at marker in cut & ally  $\angle 246^\circ 26'$  S. with cut & ally 8' South 40.12-247-268-246-269. on  
 at 57.8' on side Road 20' wide. 68.1x
- (2) Start at O of (1) = N  $\angle 246-269$ , with cut 8' ally N. Thence North at  $40^\circ = 59 \angle 244 \frac{1}{2} S \angle 271$  at  
 " 230.8' side 8' ally - N  $\angle 1594 \frac{1}{2} N \angle 1595$   
 " 333.3 7  $\frac{1}{2}$  back from drive fence N line cemetery  
 " 333.5 on fence N line cemetery
- (3) Start at O of (1) Angle to left from N. end of 2 =  $89^\circ 17'$  Thence west.  
 at 386' center 20' road - 7  
 " 47.5 clay marker center 8' South  
 " 71.5 White " center 8' ally 55.  
 " 120' center 20' Road - 7  
 " 130.3 Spine Marker Marker = J.K. = S  $\angle 334$   
 " 147.7' W " " = J.K. S  $\angle 334$ , N to walk, S  $\angle 364$   
 " 187. = S  $\angle 367$  A.R. Edgett lot = 367.  
 " 191 = center 8' ally N  $\angle 365$ .  
 " 195 = side 8' ally N  $\angle 397 \frac{1}{2} S \angle 398$
- (4) Start at 7 = 191 of (3) Angle left from O of (3)  $90^\circ 48'$  Thence N on cut 8' ally.  
 at 22' N  $\angle$  Elliott & S  $\angle 918$  Bonold =  
 " 34. N  $\angle$  M. Donald =  
 " 115.2' N  $\angle 1534$ . and 8' of N side 1534  $\angle R \frac{1}{2}$   
 " 119.2' cut 8' walk E  $\frac{1}{2}$  N.  
 " 183' side 8' ally -  $\angle N \angle 1528 \frac{1}{2} N \angle 1532$   
 " 279.3 7 on fence N line cemetery

41

INDEXED ON MAP

TOPOGRAPHY.





Bellefontaine Cemetery Survey, Mar. 1917

Replat N. central part.

x = center of road

STATION. ALIGNMENT. DEFLECTION. REMARKS

5 Start at 279.3 of (14) = V near iron fence. NE with fence & N line cemetery  
at 198.7 stake at 333.3 of (2). near fence & line cemetery.

(6) Start at V cut road = at 38.6 of (3) S 43 3/4 W

Angle to left from 191. of (3) 46° 44'

at 38. x = R-2. at 66 = x

" 83.9 x Roads = V at 113. = x Road E of V. on curve.

(7) Start at V cut road, at 38.6 of (3) and 0 of 6. N 1 E

Angle to right from 191. of (3) 90° 19'

at 19 x = R 9'. at 50 x = R 15'. at 100 x = R 15.5. at 150 x = R 12'

at 170 x = R. 8'. at 174 pass x center road.

at 231. pass S line 8' walk & R 3' to clay marker N 77° 15' 1575

" 231. Left on S line 8' alley x Left 24.7'

" 253' pass east of curve road NE

" 285' N. edge of park.

" 324.4 V at iron fence of line cemetery at 341' W of 333.5 of (2)

(8) Start at 231.7 of 7. Angle Left from 324.4 of 7 = 73° 19'

= N 72 1/4 W at 33 cut road = x. at 50 x = R 9'

at 80 x = R 23'. at 100 x = R = 25'. at 120 x = R = 15'

at 138 x at 165 = V = 279.4 of 4 = iron fence

9 Start at 195 of (3) - N 62° 37' S 2° 39' E. Hence N. on Wide 8' alley

at 42.4 N 62° 39' E. at 52.5 N 62° 15' 22. at 75.2 N 62° 15' 23.

" 95. N 62° 15' 24. at 115.2 N 62° 15' 25. = side 8' alley

" 142. N 62° 15' 27. at 155.2 N 62° 15' 28. = side 8' alley

Bellefontaine Cemetery Survey

Stationers, St. Louis, Mo.

Replat N. central part

x = center of road

TOPOGRAPHY.

(10) Start at marker cut & alley = 0 of (1) & (2) & (3) to 224.6 & 267

Thence on West on Line (3)

at 24 = N 77° 26' at E side of road. at 38.6 center of Road

" 44 = Line 9' line 25' in Road. at 47.5 center Walk South

at 51.6 E line 300 & W. line 273. = N 8'

" 71.6 = N 77° 26' NE 230.4 also 8' S. of SW 230.0 & SE 230.3

" 91.6 = NW 230.4 & NE 230.0 " 8' S of SW 230.3 & E line 8' alley N.

" 99.6 = N line 8' alley N 8' S. of SE 231. Skin 331 = 12.5' to S line

" 108.8 = NW 230 at E side of 20' road

" 130.3 = Marble marker W side Road SE 234 at E side marker

" " " " " " NE 235

" 147.7 = center Marble marker SE 236 & NE 236.3 at Wide 8' alley

" 167 = SE 236.7 & NE 236.8

" 187 = SW 236.7 " NW 236.8. at E side 8' alley

(11) Start at 197 of (9) = SW 236.7 Thence on E line 8' alley North

at 40 NW 236.7 & SW 236.6

" 43.5 NW 236.7 & SW 236.6 at old N line cemetery

" 75.2 NW 236.6 SW 236.5

" 95.2 NW 236.5 & SW 236.4

" 115.2 NW 236.4

(12) Start at marker = 0 of 1 & 2 Thence on cut & alley & line 2

at 75.2 cut stake = N line of lot from line (11) at 75.2

" 40' East line West

(13) Start at cut road = 120 of (3) Angle to R. from 0 of (3) = 68° 31'

Thence 320 3/4 E at 25 = W. 4' of cut. at 50 = 2.5 S of x

at 65.6 = V at 83.9 of (6) = x on road. at 80 = x Road E & W



Bellefontaine Cemetery Survey Mar. 1917  
 Repeat N. central part.

STATION.	ALIGNMENT.	DEFLECTION.	REMARKS
----------	------------	-------------	---------

(14) Start at cut Road = 120 of (3) & 0 of 13  
 Thence N 16° W. Angle to Left 106° 33' from 0 of (3)  
 at 50' x West of line 4.4. at 100' x West 4' - height 4.6 x  
 at 150' x West left 1'. at 200' x W Left 2'.  
 at 250' x E - Right 5'. at 250' Left W 30' to W. side Road W.  
 at 289.87 at wire fence at line cemetery. & West 7.4 from 7  
 at N end line 4.

May 2nd 1917.

(15) Start at B in center & walk N. line 269 & 24  
 Thence N on cut line 3' walk  
 at 75.2 = 7 at 115.2 = 7 at 123.2 = 7 at 163.2  
 = 171.2 = 7

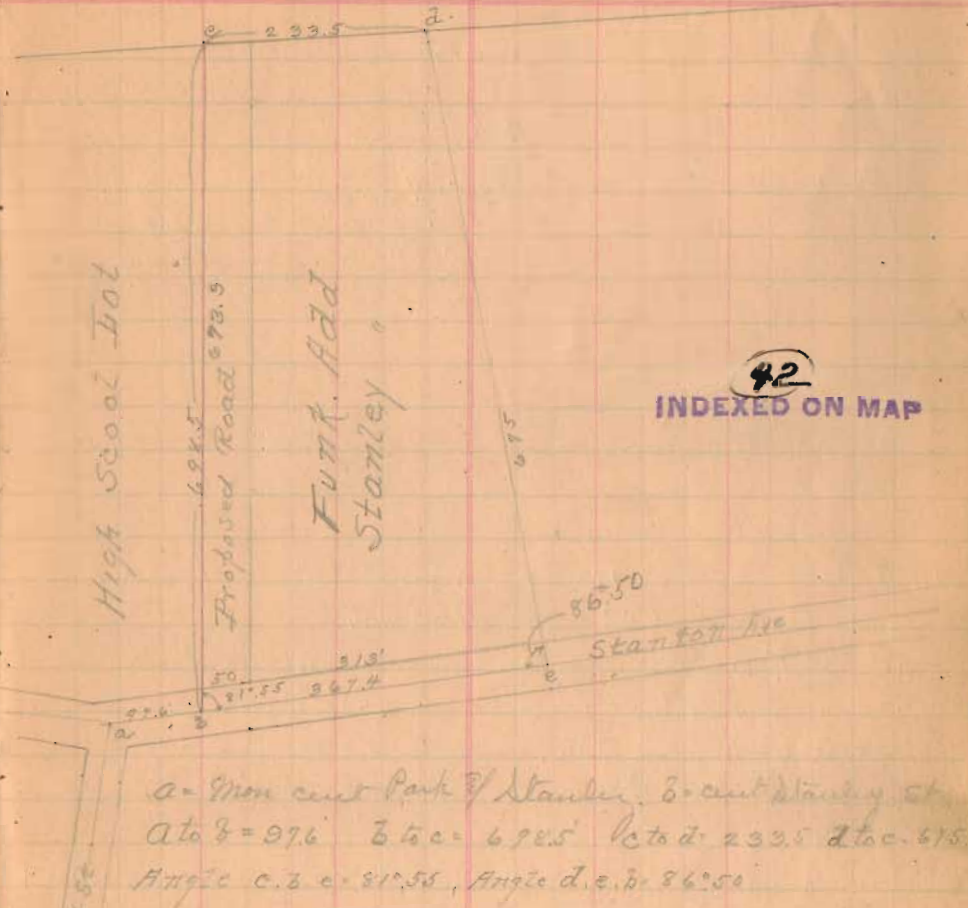
(16) Start at B in cut 8' walk = 0 of 15.  
 Thence W.  
 at 24' = 0 - at 91.6' = 0 at 71.6' = 0 at 99.6' = 7  
 at 108.8' = 0 - E side of road. At 187.1' = 0 = 59° x 367.

(41)  
 INDEXED ON MAP

Stanley Add. continued from page 78

Stationers, St. Louis, Mo.

TOPOGRAPHY.



(42)  
 INDEXED ON MAP