

Bellefontaine Cemetery Survey Mar. 1917  
 Repeat N. central part.

STATION.	ALIGNMENT.	DEFLECTION.	REMARKS
----------	------------	-------------	---------

(14) Start at cut Road = 120 of (3) & 0 of 13  
 Thence N 16° W. Angle to Left 106° 33' from 0 of (3)  
 at 50' x West of line 4.4. at 100' x West 4' - height 4.6 x  
 at 150' x West left 1'. at 200' x W Left 2'.  
 at 250' x E - Right 5'. at 250' Left W 30' to W. side Road W.  
 at 289.87 at wire fence at line cemetery. & West 7.4 from 7  
 at N end line 4.

May 2nd 1917.

(15) Start at 0 in center & walk N. line 269 & 24  
 Thence N on cut line 3' walk  
 at 75.2 = 7 at 115.2 = 7 at 123.2 = 7 at 163.2  
 = 171.2 = 7

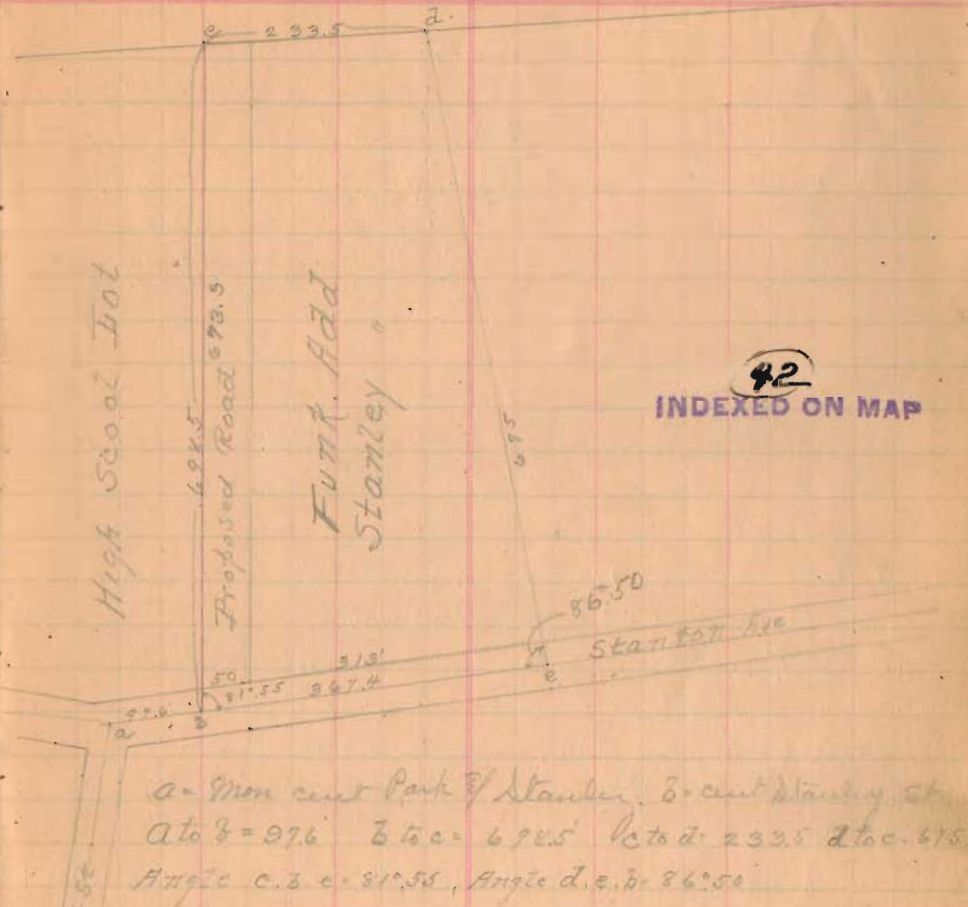
(16) Start at 0 in cut & walk = 0 of 15.  
 Thence W.  
 at 24' = 0 - at 91.6' = 0 at 71.6' = 0 at 99.6' = 7  
 at 108.8' = 0 - E side of road. At 187.1' = 0 = 59° x 367.

(41)  
 INDEXED ON MAP

Stanley Add. continued from page 78

Stationers, St. Louis, Mo.

TOPOGRAPHY.



(42)  
 INDEXED ON MAP