

W. O. B. M. = Collected. Station 10/ concluded. 2d.  
 Empty ditch at Ridge = Sta 44464 Course = 58°14'2"  
 Middle of Canal = Sta 86+36 = 54°14'2"  
 Ridge = 44 = 42.53 B.M. = 48.61

TOPOGRAPHY.

	Sta	F.S.	R	F	Red. Dev	Cut
		3.72			12.54	
Sta 10			89	2.84	15.39	6.44
Sta 11		730				
" "			5.85	1.45	14.83	7.32
12						
13			5.12	.73	17.56	7.44
14			5.78	.66	16.90	6.25
14 + 53. Bottom old tile			9.65	3.87	13.03	2.08
15. End in "Salama Pond"			7.98	1.67	14.70	3.50
		11.02	8.80		2.14	
		886				
		216				

11.70  
 2.23  
 71.437  
 6

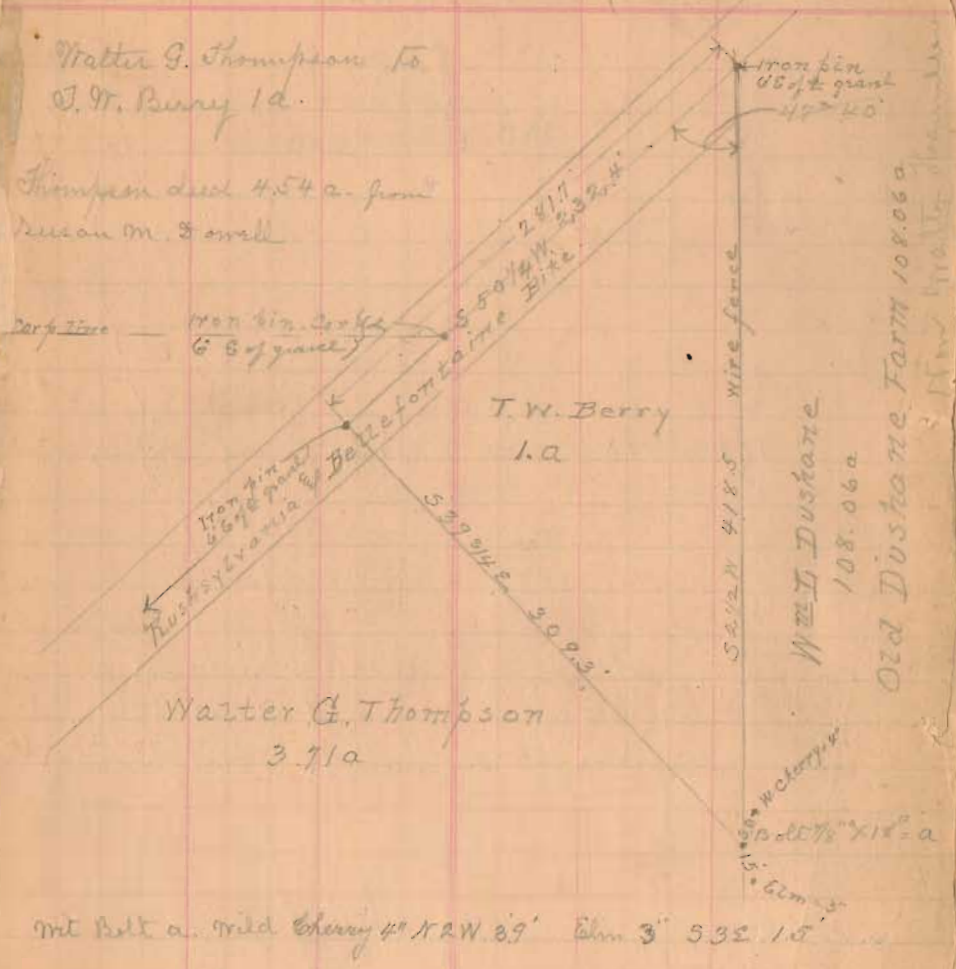
Ditch No 3. Along fence in front house of barn. W. O. B. M. = Collected

Sta 0 at end of ditch					10.00	
" " Bottom Road ditch		6.55			10.00	9.60
" " Plug (East Road stake)		5.45	1.10		11.10	1.10
" " Bottom Road ditch		5.15	.30		11.40	10.10
" " Plug		4.14	1.01		12.41	1.01
" " Bottom ditch		3.61	.53		12.94	11.10
" " Plug		2.57	1.07		14.01	1.07
" " Bottom of ditch		3.06	.52		13.49	11.35
" " " Plug		2.06	1.00		14.49	11.35
Top corner house walk at 14		4.43		2.37	12.12	
		2.55	4.43			
		4.43				
		2.12				

Walter G. Thompson Survey Nov. 11-1919  
 Part of Mill Survey No 5245

TOPOGRAPHY.

(Lake Township)



mit belt a. Wild Cherry 4" x 2 W. 39' Elm 3' 53 E 15'

46  
 INDEXED ON MAP

W.D.B.M. Collock Survey No 2 concluded.  
 Hominy ditch at Bridge Sta 44+64. Course = S 87° 14' E  
 M.C. Collock Patent = Sta 26+36 = 354.14 E  
 Bridge 2-44-42.53 B.M. = 48.61

TOPOGRAPHY.

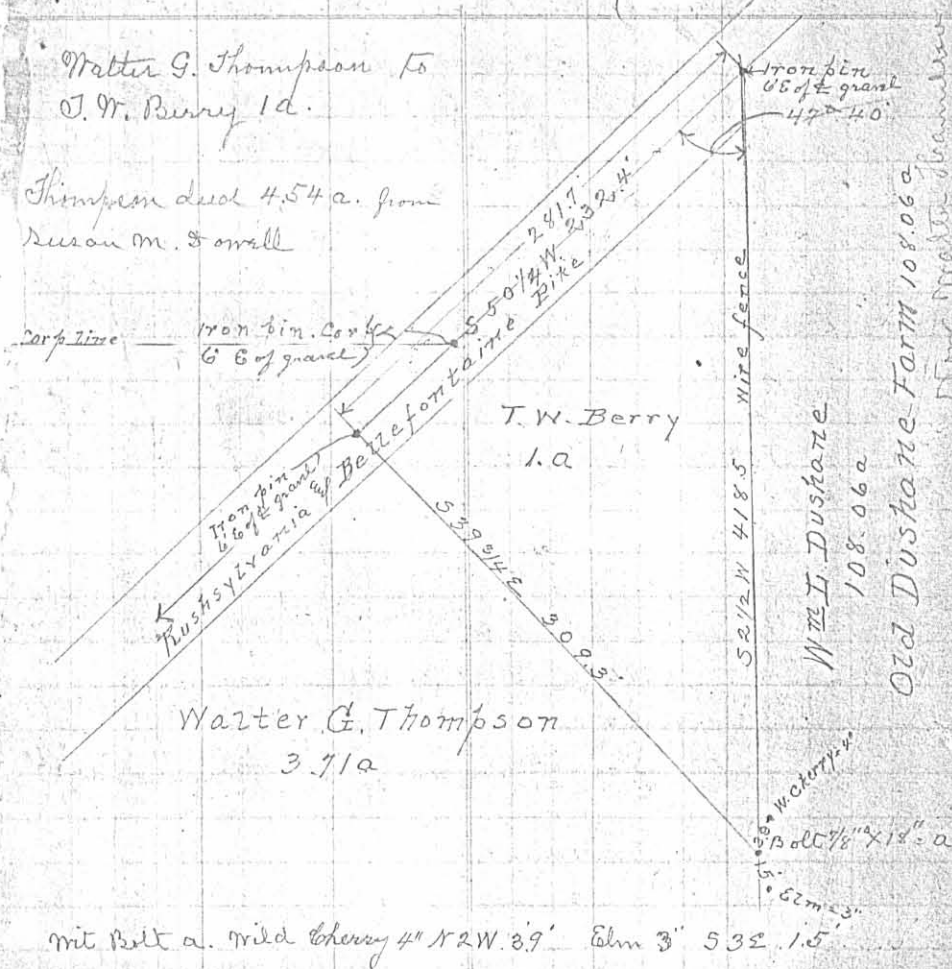
	BS	FS	R	F	Red. Lev	Cut
Sta 10	3.72				12.54	
Sta 11		88	2.84		15.38	6.44
" "	7.30					
12		5.85	1.45		16.83	7.32
13		5.12	.73		17.56	7.48
14		5.78	.66		16.90	6.25
14+5.3 Bottom old tile		9.65	3.87		13.03	2.08
15. End in "Calamus Pond"		7.98	1.67		14.70	3.50
		11.70	8.86		2.16	
		8.86				
		2.16				

Ditch No 3. Along pike in front home of barn. W.D.B.M. Collock  
 Tile 10" sewer.

Sta 0 at end of ditch					10.00	
" " Bottom Road ditch	6.55				10.00	9.60
" " Plug (East Road stake)	5.45	1.10			11.10	1.10
" " Bottom Road ditch	5.15	.30			11.40	10.10
" " Plug	4.14	1.01			12.41	2.27
" " Bottom ditch	3.61	.53			12.94	11.41
" " Plug	2.54	1.07			14.01	2.47
" " 2+2.5 Bottom of ditch	3.06	.52			13.49	11.35
" " " Plug	2.06	1.00			14.49	11.35
Top corner house walk at 1+4	4.43		2.37		12.12	
	6.55	4.43				
	4.43					
	2.12					

Walter G. Thompson Survey Nov. 11-1919  
 Part of Mill Survey No 52.45

TOPOGRAPHY.



INDEXED ON MAP  
 46 1P

46  
 INDEXED ON MAP

Receipts 9-19-01 OK JHL

# Lee Surveying and Mapping Co., Inc.

Land Surveys • Topography • Subdivisions • Construction Layout

117 N. Madriver St.  
Bellefontaine OH 43311



Phone: (937) 593-7335  
Fax: (937) 593-7444

## HITZEMAN 1.000 ACRES

Lying in Virginia Military Survey 5245, City of Bellefontaine, Lake Township, Logan County, Ohio.

Being all of the Kathleen L. Hitzeman 1.000 acre tract as deeded and described in Official Record 273, Page 316 of the Logan County Records of Deeds and being more particularly described as follows:

Beginning at a 1/2 inch iron rod found at the intersection of the center-lines of Allison Court and Allison Road.

THENCE, with the center-line of Allison Court (60 feet wide), S 50°-31'-00" W, a distance of 366.04 feet to a MAG nail set at the TRUE POINT OF BEGINNING.

THENCE, with the west lines of the Vernon Lee Hunt 0.30 acre tract (O.R. 48, Pg. 277, Tract I), the Diana M. Neer 0.11 acre tract (O.R. 7, Pg. 62), the Diana M. Ervin 0.61 acre tract (Vol. 373, Pg. 597), the Edgar L. Miller 0.75 acre tract (Vol. 243, Pg. 394) and the Tonia E. Terebuh, Trustee, 3.76 acre tract (O.R. 305, Pg. 559, Tract II), S 2°-51'-38" W, a distance of 418.55 feet to a 3/4 inch iron rod found, passing a 5/8 inch iron rod set at 40.59 feet.

THENCE, with the northeasterly line of the Calvary Baptist Church 3.82 acre tract (Vol. 321, Pg. 144), N 39°-26'-31" W, a distance of 309.35 feet to a MAG nail set, passing a 5/8 inch iron rod set at 279.35 feet.

THENCE, with the center-line of Allison Court, N 50°-31'-00" E, a distance of 281.70 feet to the point of beginning.

Containing 1.000 acres, of which 0.185 acre is within the highway right-of-way.

The basis for bearings is the center-line of Allison Court, being N 50°-31'-00" E, and all other bearings are from angles and distances measured in a field survey by Lee Surveying and Mapping Co., Inc. on September 12, 2001.

Description prepared by:

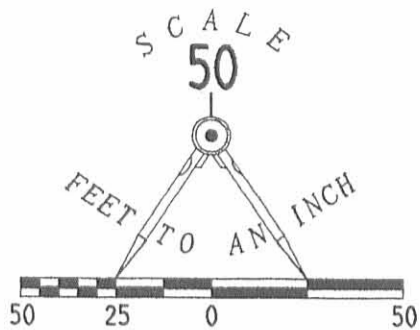


ORIGINAL STAMP IN GREEN

*[Handwritten Signature]*  
Jeffrey I. Lee  
Professional Surveyor 6359  
September 17, 2001

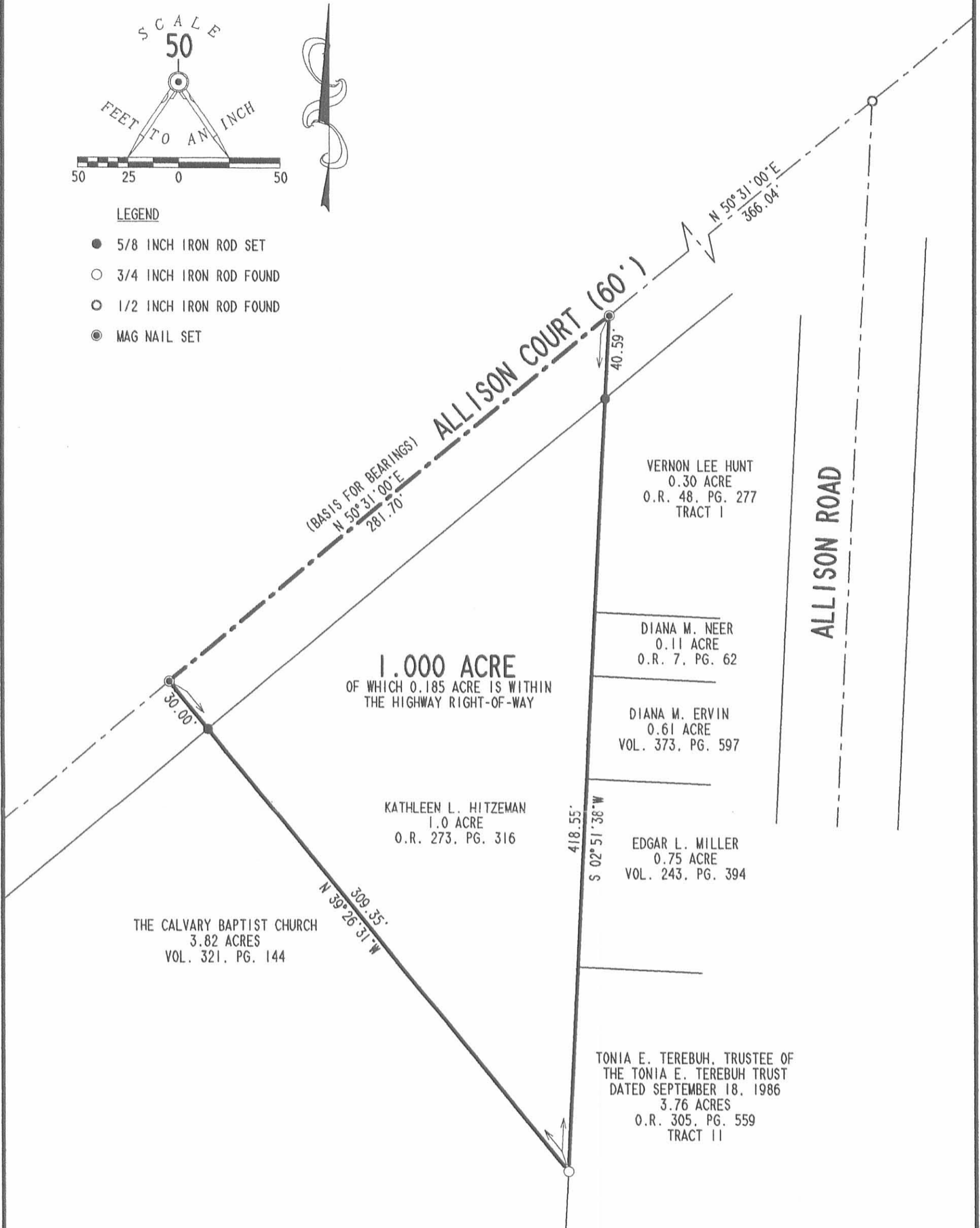
L-3236





**LEGEND**

- 5/8 INCH IRON ROD SET
- 3/4 INCH IRON ROD FOUND
- 1/2 INCH IRON ROD FOUND
- MAG NAIL SET



RETRACEMENT SURVEY OF THE  
KATHLEEN L. HITZEMAN  
1.0 ACRE TRACT  
OFFICIAL RECORD 273, PAGE 316  
CITY OF BELLEFONTAINE  
VIRGINIA MILITARY SURVEY 5245  
LAKE TOWNSHIP  
LOGAN COUNTY, OHIO



SURVEYED BY:

JEFFREY I. LEE  
PROFESSIONAL SURVEYOR 6359  
SEPTEMBER 12, 2001

COPYRIGHT 2001 BY:  
LEE SURVEYING & MAPPING CO., INC.  
117 North Madriver Street  
BELLEFONTAINE, OHIO 43311  
(937) 593-7335

2 WORKING DAYS  
**BEFORE YOU DIG**  
CALL TOLL FREE **800-362-2764**  
OHIO UTILITIES PROTECTION SERVICE.

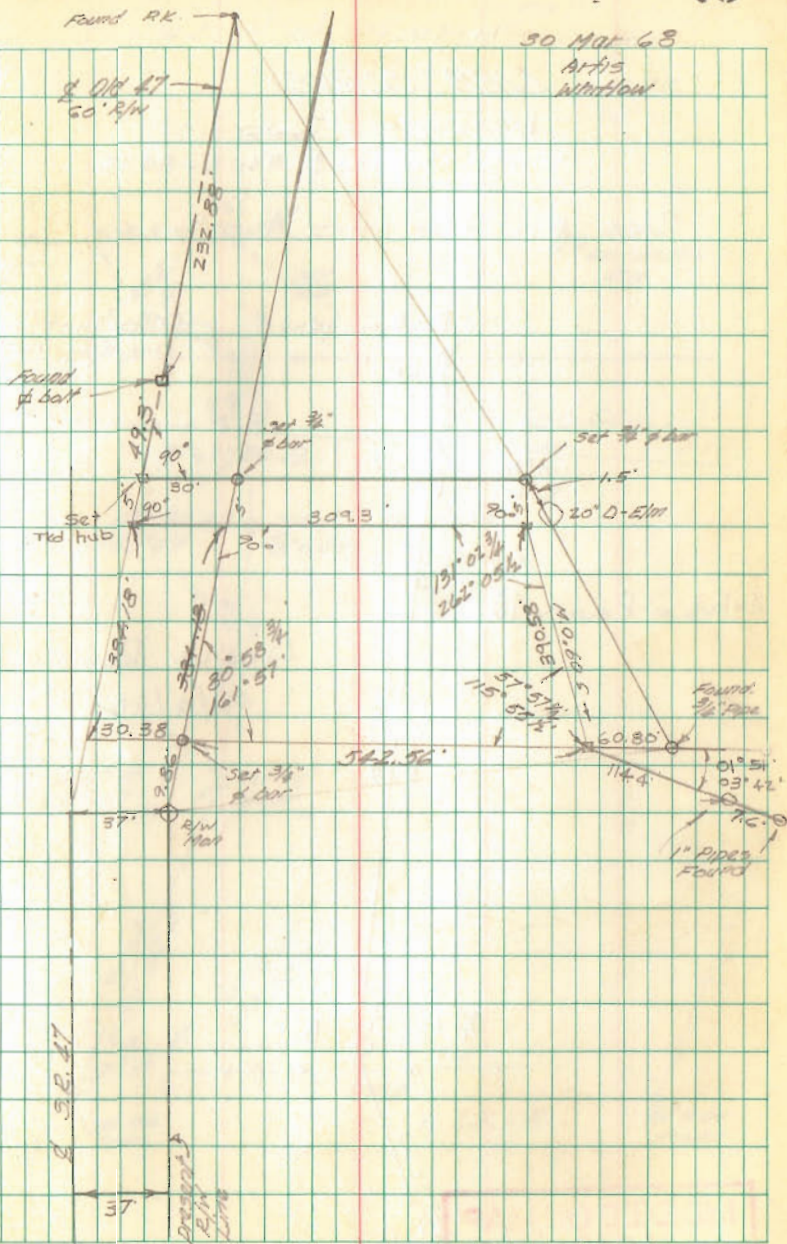
INDEXED ON MAP ORIGINAL STAMP IN GREEN  
46 2P

D 402 HITZEMAN

L-3236-3

THOMPSON SURVEY  
LAKE TWP - W.M.S. 5245

73



INDEXED ON MAP

46