

Howell-Hoffman Survey Nov. 12th 1913
 Survey No. 5245

R. P. STUDLEY & Co., Manufacturing

STATION.	ALIGNMENT.	DEFLECTION.	REMARKS.
John Hoffman heirs to Sam Jones		68°	see below

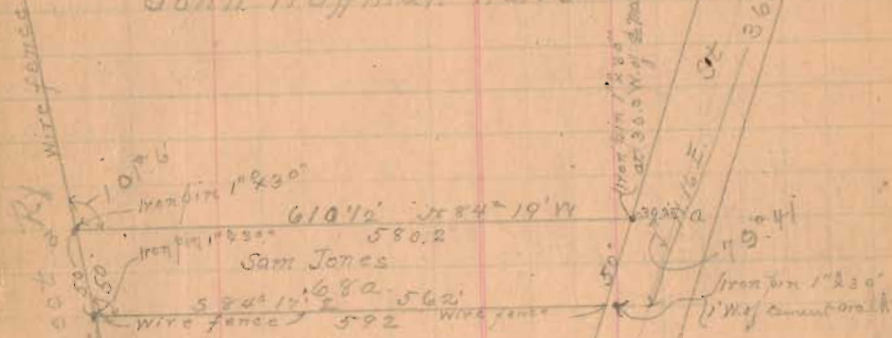
(47)

INDEXED ON MAP

Corporation line



John Hoffman Heirs

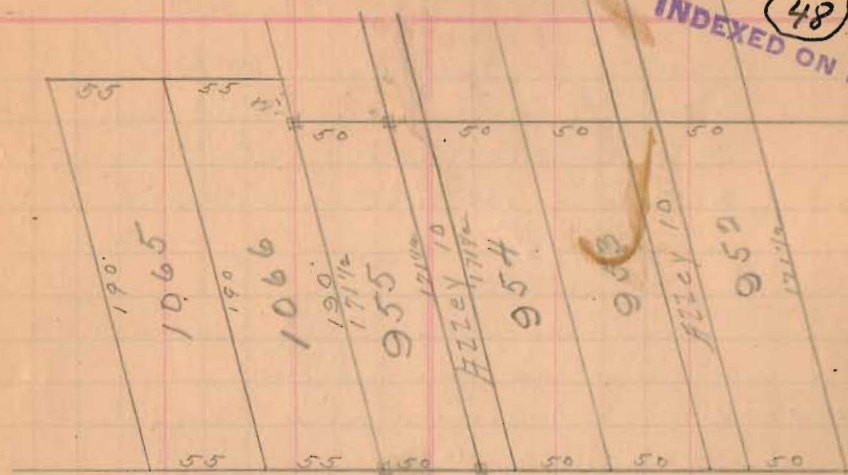


Reid L. Huber

Start line in at a Sugar 15° NW 1.9'
 Edm 20" S = 14.1'
 Meas NW angle Sam Jones = 99° 47' = a 2: 28° 54'
 (1) Start at 2 man at a Mon N line Sam Jones
 at 30.3 line from 1° 30'
 61° 42' from 1° 30' at Old label by Jones = 3
 (2) Start at Mon Cor line on 2 man 6 line S on 2 man
 at 361.8 line Huber and John Hoffman now Sam Jones

TOPOGRAPHY.

INDEXED ON MAP (48)



Cooper Ave 30'

Iron pin

O'Connor allotments page 112

Johns Drive