

Chester Braden Surv  
April 21-1923.

R. P. STUDLEY & Co., Manufacturing

STATION. ALIGNMENT. DEFLECTION. REMARKS.

meas SW ang Lendlow & Auburn =  $109^{\circ}37'$   
compute dist on Lendlow from  $\#$  aut S. to  $\#$  alley

(1) start at  $\#$  Newell & Auburn E on  $\#$  Aub-439.  
at 494'  $\#$  Lendlow, <sup>line</sup> produced N.  
" 502.0' Lendlow St & Auburn

(2) start  $\#$  aut on Lendlow line. Son Lendlow  
at 226.5' =  $\#$  of 16 1/2' alley at mail

(3) start at  $\#$  aut & Newell. Son  $\#$  Newell  
at 213.3 set mail =  $\#$  alley

(4) start at 213.3 of 3. E on  $\#$  alley  
at 439.3 set spike off SW  $\angle$  Braden  
ang left = NE ang  $89^{\circ}40'$

(5) start at 439.3 of 4 ang left  $89^{\circ}40'$   
at 3.3 set  $\gamma$  = SW  $\angle$  Chester Braden

" 60.1 set  $\gamma$  = NW  $\angle$  "  
check N from 439.3 of 4 to aut aut arc = 213.3

meas  $\angle$  like Braden = 78.6'

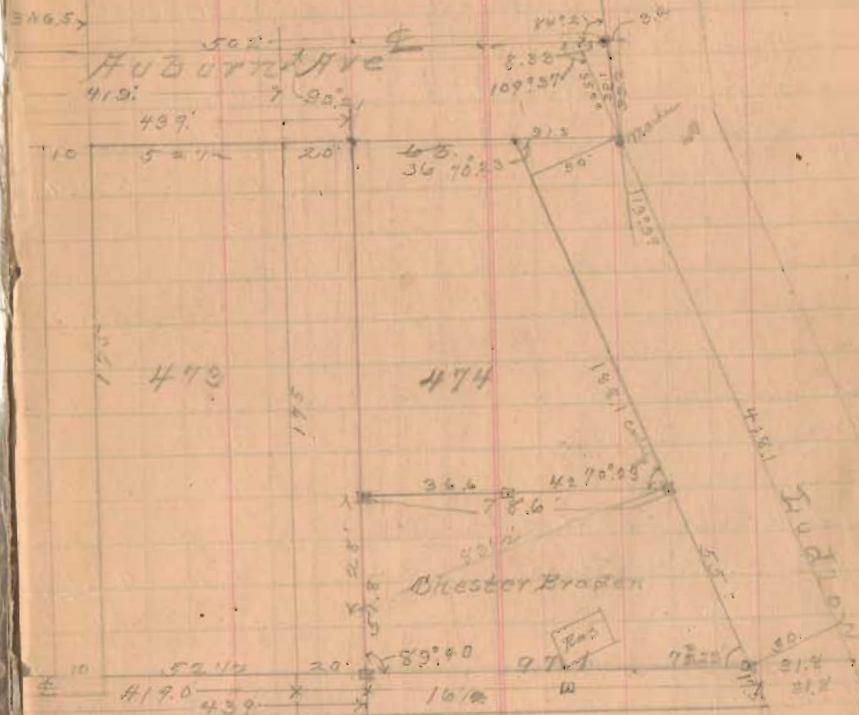
" 5 " " 97.1

90.21  
 213.3  
 213.3  
 90.21

Chester Braden Survey  
Pt Lot 474 April 21-1923

TOPOGRAPHY.

$96^{\circ}4'$



(49)  
INDEXED ON MAP

3.2  
1.0  
2.2