

Catholic School Survey

(65)
INDEXED ON MAP

1/12/24 Wright
Cloudy - Cold Smoker

15

I. Pin - Spring and Newel St.
Elm 24" N.E. 37.1'
Maple 18" N.W. 42.1'
S.E. Cor. 1 1/2 S.B. N.W. 64.0'

(63)
INDEXED ON MAP

I. Pin - Spring and Park, (Taylor)

Cement of face of riser, lower cement
step (Walk) S. 31.5'

Carolina Poplar 10" S.W. 22.6'

Ash 8" S.E. 27.3'

Elec. Lt. Pole N.E. 27.5'

(64)
INDEXED ON MAP
See Page 7

Measurements.

	Plot Book	City	Wright
On Park & Patterson to Spring	440.00	440.20	440.20
" Newel " " "	440.00	439.30	439.60
" Patterson & Park to Newell	486.50	485.10	485.40
" Spring " " "	486.50	486.50	887.15

Lot Nazi. (Plot Book Page 6)

New Number 70 71 72 73

Old Number 516 517 518 519

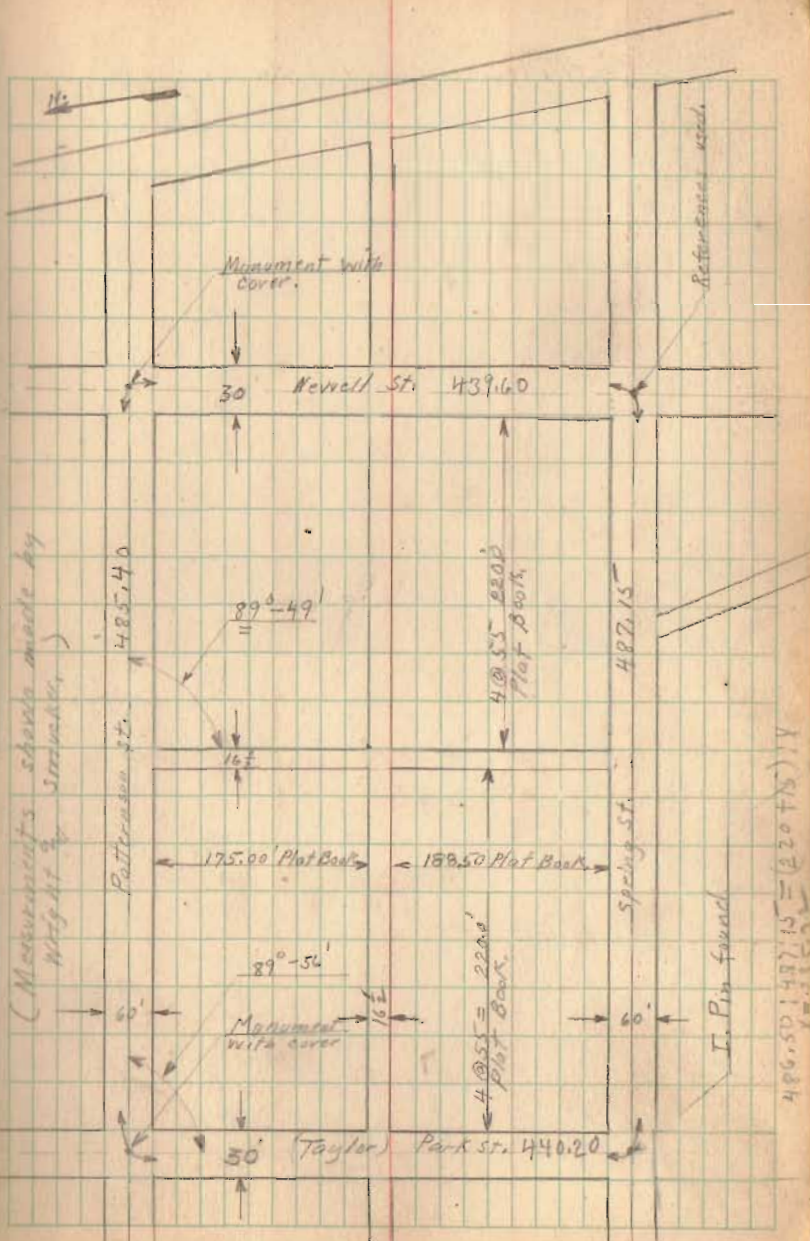
Cathelin School Survey.

1/12/24

14

$$486.50 + 485.40 = (220 + 15) \cdot X$$

$$X = 204.47$$



$$486.50 + 487.15 = (220 + 15) \cdot X$$