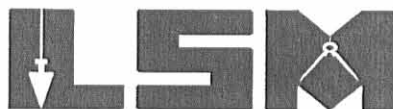


REC'D 12-24-02 SMY OK

Lee Surveying and Mapping Co., Inc.

Land Surveys • Topography • Subdivisions • Construction Layout

117 N. Madriver St.
Bellefontaine OH 43311



Phone: (937) 593-7335
Fax: (937) 593-7444

PAGE 0.100 ACRE

Lying in Virginia Military Survey 4990, City of Bellefontaine, Lake Township, Logan County, Ohio.

Being all of the Albert F. Page and Beulah Belle Page 0.08 acre tract as deeded and described in Official Record 36, Page 166 of the Logan County Records of Deeds and being more particularly described as follows:

Beginning at a MAG nail found at the intersection of the center-lines of Sandusky Avenue and Stanley Street (40 feet wide).

THENCE, with the center-line of Stanley Street, S 5°-08'-58" E, a distance of 240.89 feet to a 1 inch iron bar found in a monument box.

THENCE, S 82°-07'-08" W, a distance of 20.02 feet to a drill hole set in concrete on the west right-of-way of Stanley Street at the TRUE POINT OF BEGINNING.

THENCE, with the north line of the Jason Heminger 0.08 acre tract (O.R. 507, Pg. 763), S 84°-21'-52" W, a distance of 96.61 feet to a 5/8 inch iron rod set.

THENCE, with the east line of the Ruth A. Campbell 0.33 acre tract (O.R. 406, Pg. 614), N 6°-48'-57" W, a distance of 35.95 feet to a 5/8 inch iron rod set.

THENCE, with a south line of Leonard W. McGee 0.19 acre tract (Vol. 369, Pg. 811), N 75°-04'-07" E, a distance of 54.07 feet to a 3/4 inch iron pipe found.

THENCE, with the south line of the Alice M. Ricketts original 0.07 acre tract (Vol. 375, Pg. 709), N 70°-17'-35" E, a distance of 45.84 feet to a 5/8 inch iron rod found.

THENCE, with the west right-of-way of Stanley Street, S 5°-08'-58" E, a distance of 55.83 feet to the point of beginning.

Containing 0.100 acre.

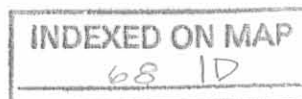
The basis for bearings is the center-line of Stanley Street, being S 5°-08'-58" E, and all other bearings are from angles and distances measured in a field survey by Lee Surveying and Mapping Co., Inc. on December 9, 2002.



ORIGINAL STAMP IN GREEN

Description prepared by:

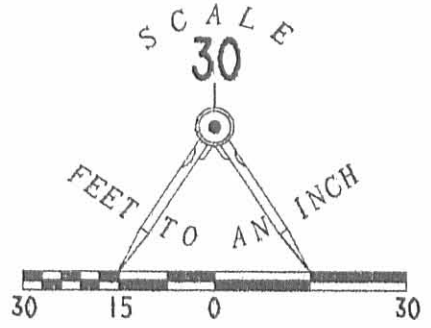
Jeffrey I. Lee
Professional Surveyor 6359
December 20, 2002



L-3495

REC'D 12-24-02 SMJ OK

SANDUSKY AVENUE (60')



LEGEND

- 5/8 INCH IRNO ROD SET
- 5/8 INCH IRON ROD FOUND
- ⊙ 3/4 INCH IRON PIPE FOUND
- ⊗ MAG NAIL FOUND
- ⊠ 1 INCH IRON BAR FOUND IN MONUMENT BOX
- ⊕ DRILL HOLE SET IN CONCRETE

240.89' S 05°08'58"E (BASIS FOR BEARINGS)

STANLEY STREET (40')

LEONARD W. MCGEE AND SANDRA J. MCGEE
0.19 ACRE
VOL. 369. PG. 811

ALICE M. RICKETTS
0.07 ACRES
VOL. 375. PG. 709

APPARENT GAP IN DEEDS

N 75°04'07"E
54.07'

0.100 ACRE

ALBERT F. PAGE AND BEULAH BELLE PAGE
0.08 ACRE
O.R. 36. PG. 166

RUTH A. CAMPBELL
0.33 ACRE
O.R. 406. PG. 614

N 06°48'57"W
35.95'

3.5 EASEMENT

96.61'

3.5 EASEMENT

S 84°21'52"W

JASON HEMINGER
0.08 ACRE
O.R. 507. PG. 763

20.02'

S 82°07'08"W

55.83' S 05°08'58"E

RETRACEMENT SURVEY OF THE
ALBERT F. PAGE AND BEULAH BELLE PAGE
ORIGINAL 0.08 ACRE TRACT
OFFICIAL RECORD 36, PAGE 166
VIRGINIA MILITARY SURVEY 4990
CITY OF BELLEFONTAINE
LAKE TOWNSHIP
LOGAN COUNTY, OHIO



SURVEYED BY:

Jeffrey I. Lee
JEFFREY I. LEE
PROFESSIONAL SURVEYOR 6359
DECEMBER 9, 2002

COPYRIGHT 2002 BY:

LEE SURVEYING & MAPPING CO., INC.
117 North Madriver Street
BELLEFONTAINE, OHIO 43311
(937) 593-7335

2 WORKING DAYS
BEFORE YOU DIG
CALL TOLL FREE **800-362-2764**
OHIO UTILITIES PROTECTION SERVICE.

INDEXED ON MAP
68 1P

ORIGINAL STAMP IN GREEN

D 407

MSMTH2

L-3495-3

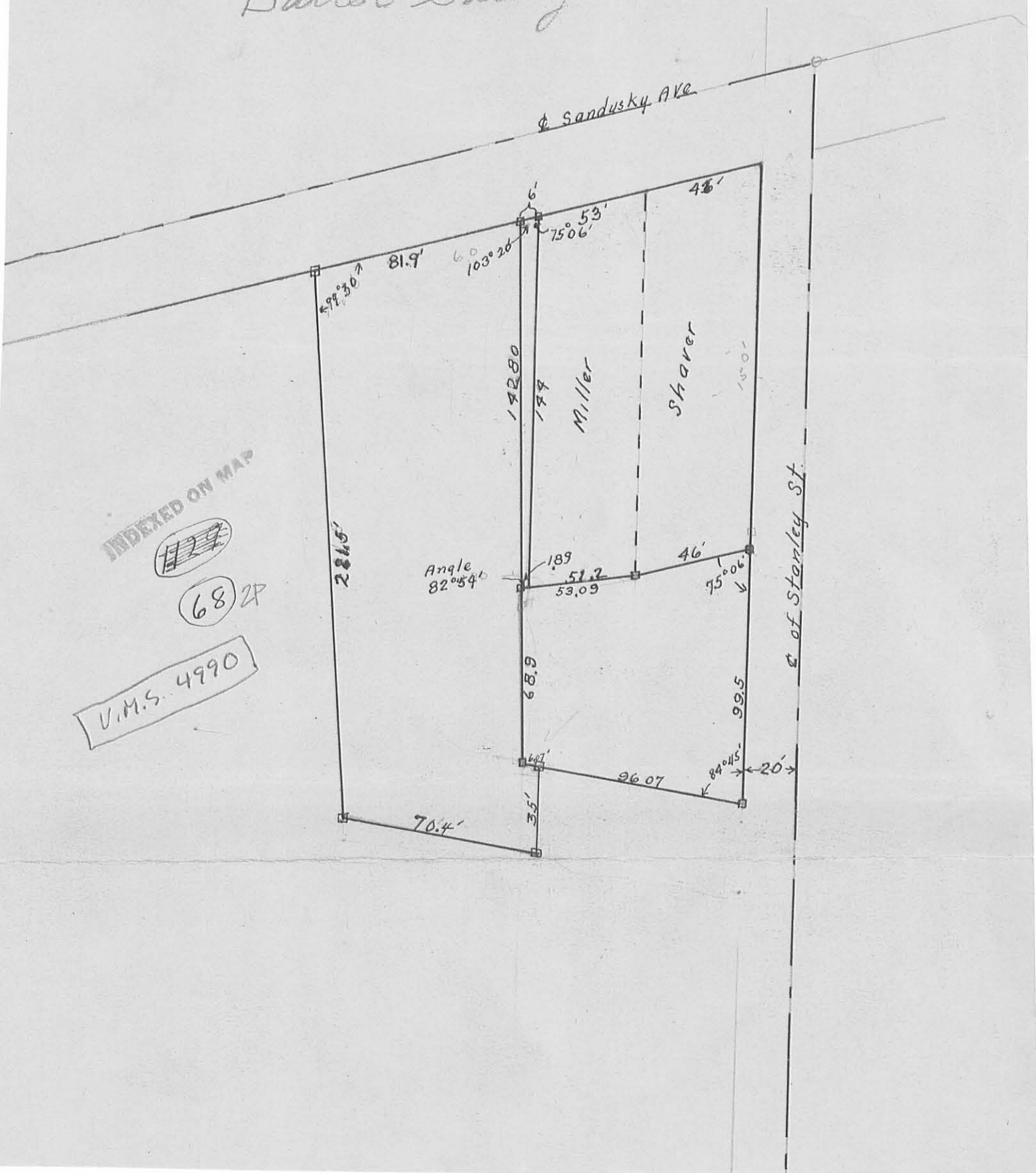
Butler Survey

INDEXED ON MAP

#29

68 2P

V.M.S. 4990



Sandusky Ave

of Stanley St.

Miller

Sharer

Angle 82.54'

284.5'

70.4'

142.80'

174'

68.9'

3.5'

99.5'

20'

81.9'

60'

103.20'

75.06'

46'

189'

51.2'

53.09'

46'

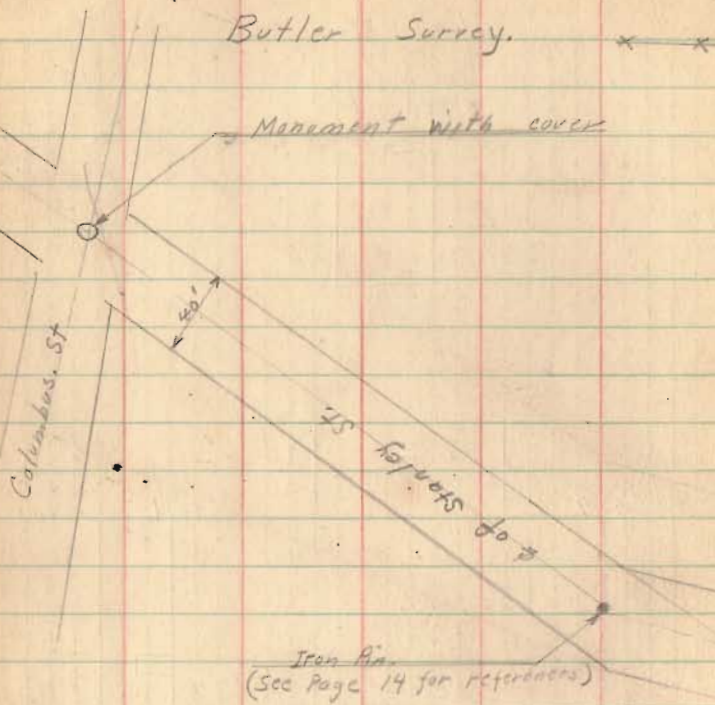
75.06'

96.07'

84.45'

20'

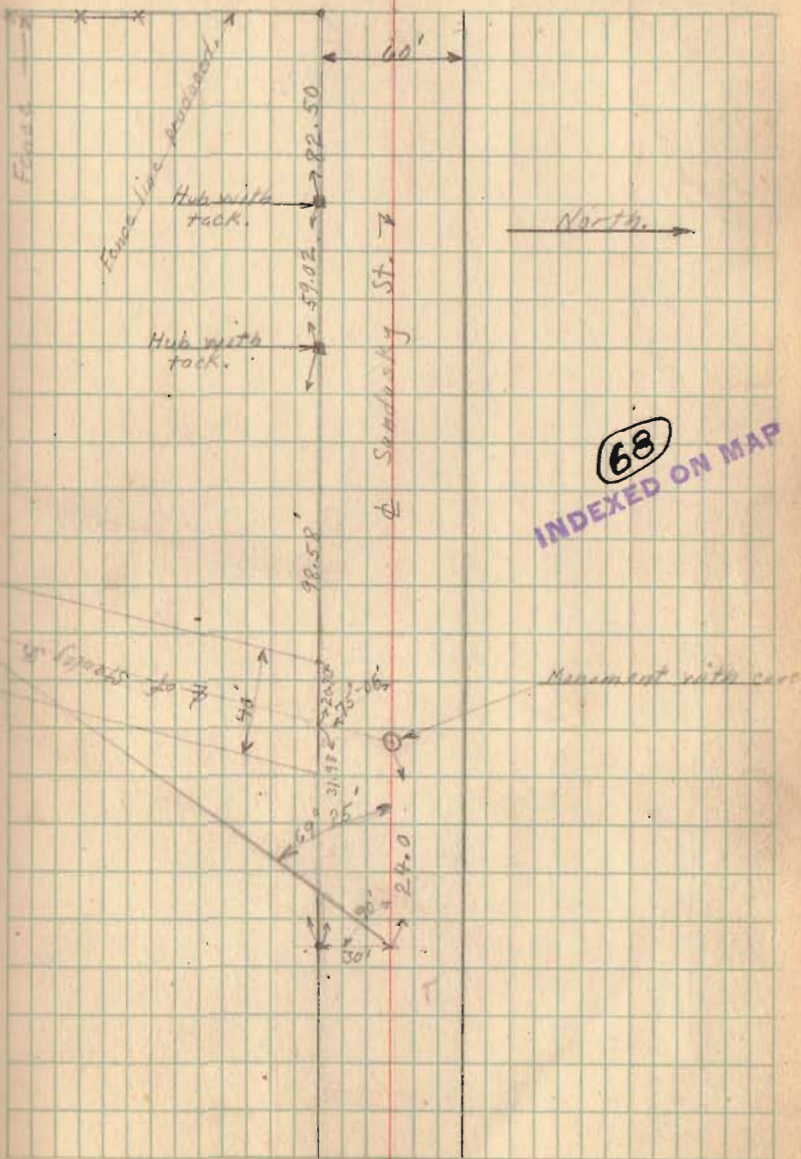
Butler Survey.



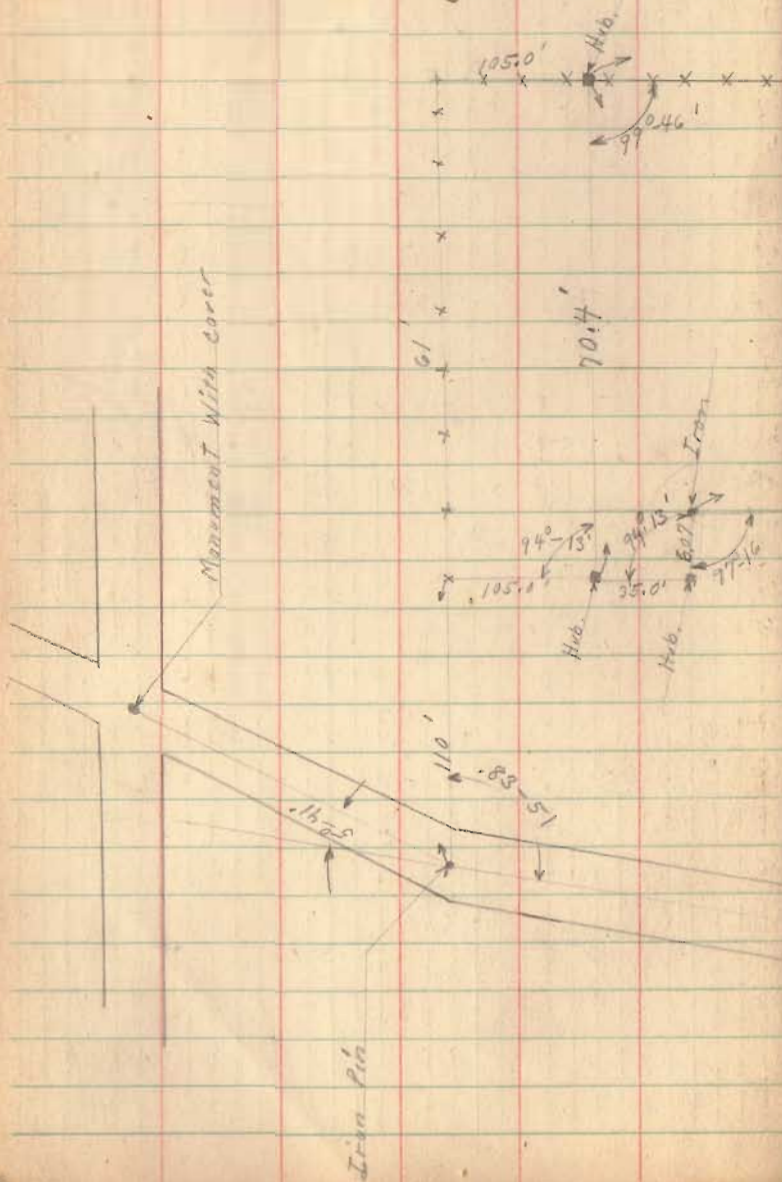
$$\begin{aligned} \text{Tan } 14^{\circ} 54' &= .26608 \\ (30)(.26608) &= 7.98' \\ \text{Cos. } 14^{\circ} 54' &= .96638 \\ \frac{20}{.96638} &= 20.694 \end{aligned}$$

3-5-24 Wright Smucker.

22



Butler Survey



March - 6 - 1927
 Montgomery
 Wright
 Smucker
 Cool - Still.

23

