

Compared

Surveyed for

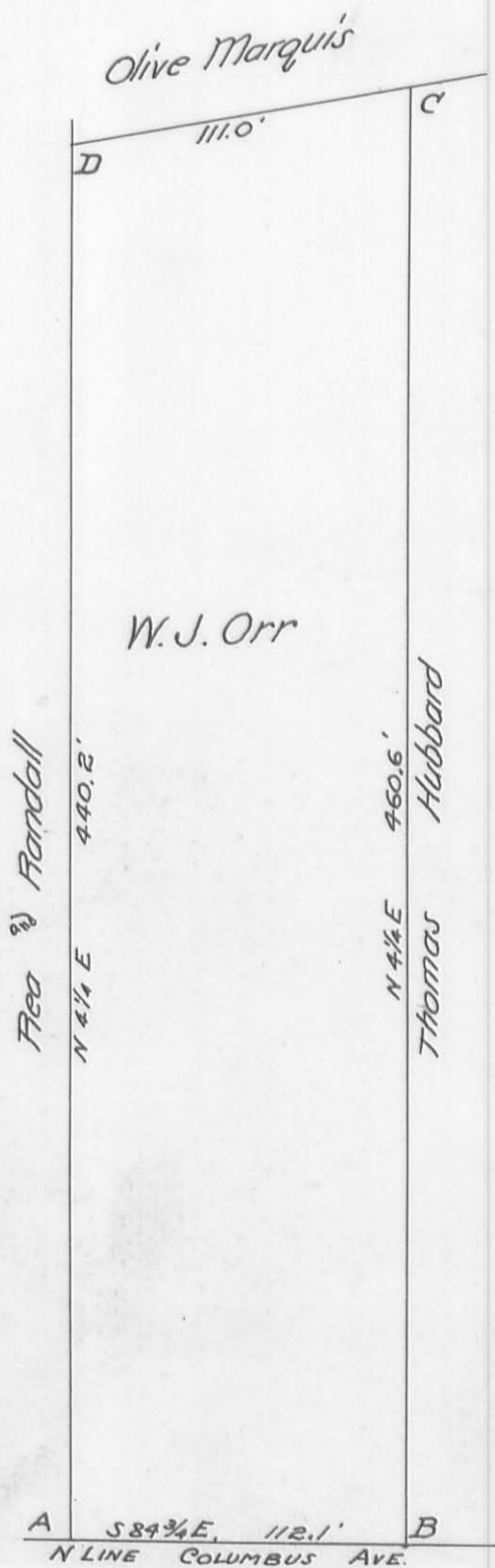
W. J. Orr

(152)
INDEXED ON MAP

Being W 1/2 of S 1/2 of Subdivision No. 20, of Survey No. 4990.

Bellefontaine, Ohio

May 21, 1907



- Description of Corners -

- A. Stone at S.E. corner of Aea ⁹/₁₆ Randall's tract. Set by H. C. Moore
Wit: - Sugar, 7", north 3.55'; Ash ¹⁰/₁₆ N. of E. 22.2'
- B. Stake at S.W. corner of Thos. Hubbard's tract, Set by J. C. Wonders. Planted sandstone 4" x 4" x 18"
Wit: - Red Oak 24", N. of W. - 11.0'
White Oak, 21", W. of N. - 9.4'
- C. Stake set from old wit:
New wit: - Apple, 7" east 22.3'
Apple, 8" N.W. 12.2'
- D. Stake at S.W. corner of Olive Marquis tract.