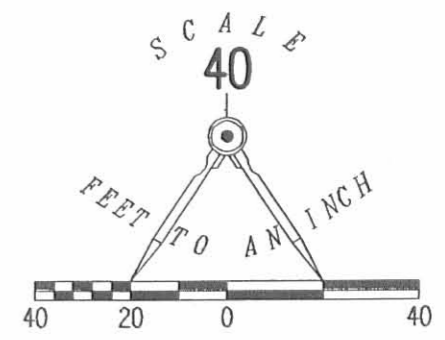


REC'D 8-6-08 SMY DC



LEGEND:

- ☒ STONE FOUND
- ⊙ 1/2 INCH IRON PIPE FOUND
- 5/8 INCH IRON ROD SET

RETRACEMENT SURVEY OF THE
DAVID R. WREN AND
DARA J. WREN
LOT 1508
W. SCOTT'S ADDITION
PLAT CABINET A, SLIDE 25
OFFICIAL RECORD 258, PAGE 927
CITY OF BELLEFONTAINE
LAKE TOWNSHIP
LOGAN COUNTY, OHIO

SURVEYED BY:

William K. Bruce
WILLIAM K. BRUCE
PROFESSIONAL SURVEYOR 7437
JULY 30, 2008



ORIGINAL STAMP IN GREEN

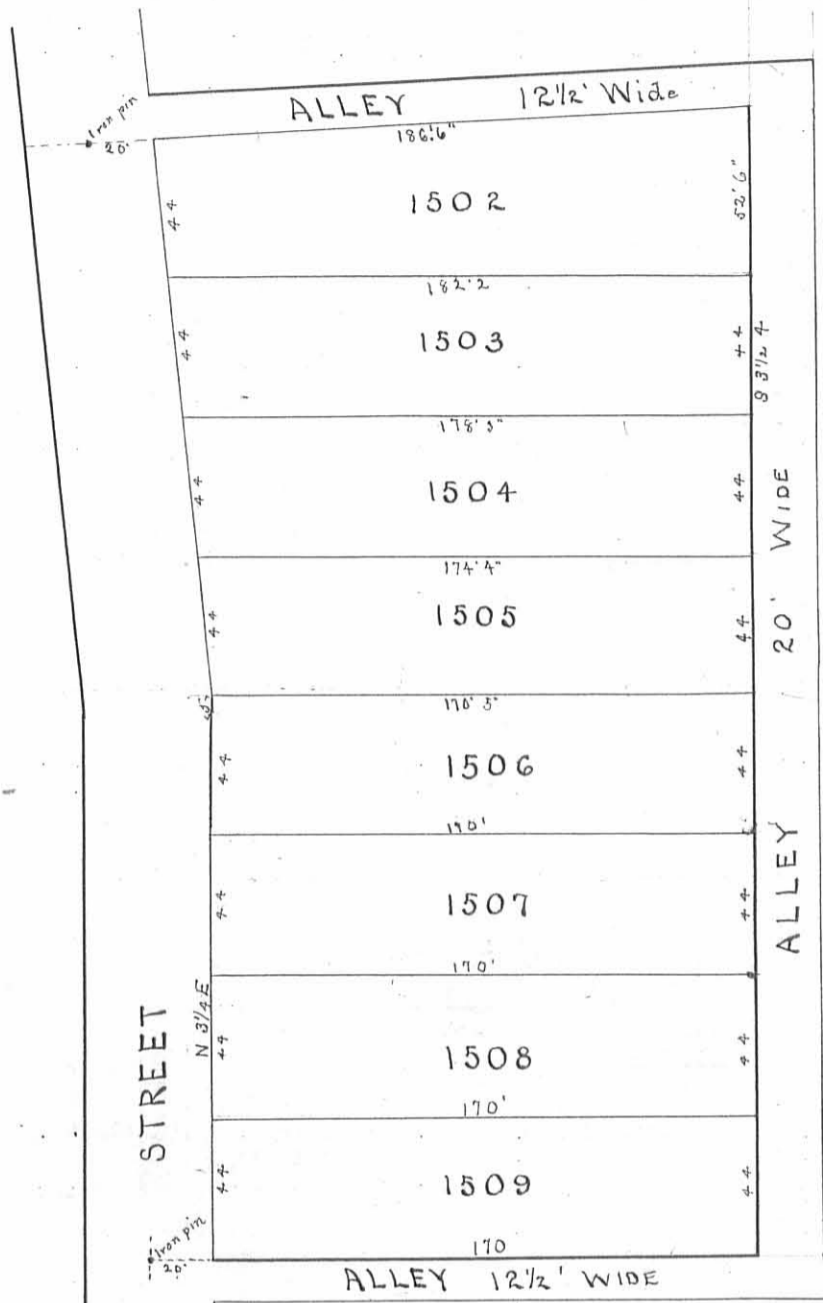
COPYRIGHT 2008 BY:
LEE SURVEYING & MAPPING CO., INC.
117 North Madriver Street
BELLEFONTAINE, OHIO 43311
(937) 593-7335
surveys@lsmcinc.us
KSS D0708 4675078 L-4675-3

2 WORKING DAYS
BEFORE YOU DIG
CALL TOLL FREE 800-362-2764
OHIO UTILITIES PROTECTION SERVICE

INDEXED ON MAP
450 1P

(450)

INDEXED ON MAP



Map of
 W. Scott's
 Addition
 to
 Bellefontaine

COLUMBUS ST.

Surveyor's Certificate —
 I, the undersigned Surveyor, do hereby certify that the annexed plot is a correct representation of W. Scott's Addition to Bellefontaine Ohio being part of Virginia Military Survey No. 4990, as by me surveyed Dec. 19, 1891 at request of the Proprietor W. Scott
 James C. Houdus
 Surveyor Logan Co.