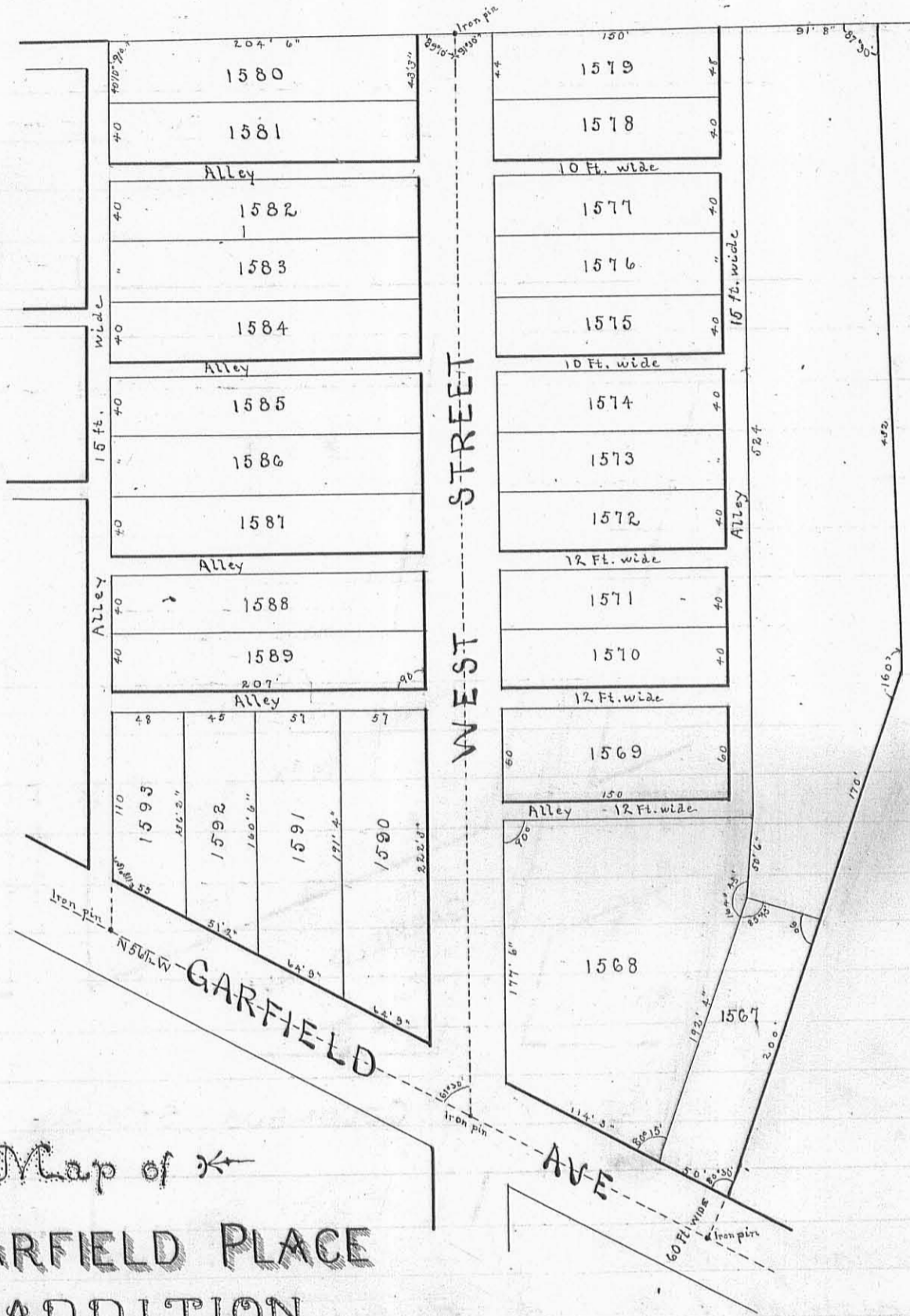


452

INDEXED ON MAP



Map of ↙  
**GARFIELD PLACE  
 ADDITION**

TO  
**BELLEFONTAINE**

OHIO

*Surveyor's Certificate*

I, the undersigned Surveyor, do hereby certify that the annexed plat is a correct representation of Garfield Place Addition to Bellefontaine, Ohio being part of Section No. 35, T.4.R.14. as surveyed by me, April 5-11-25, 1892 at request of the proprietors Coltons and Short.

*James C. Houdue*  
 Surveyor Logan Co. O.