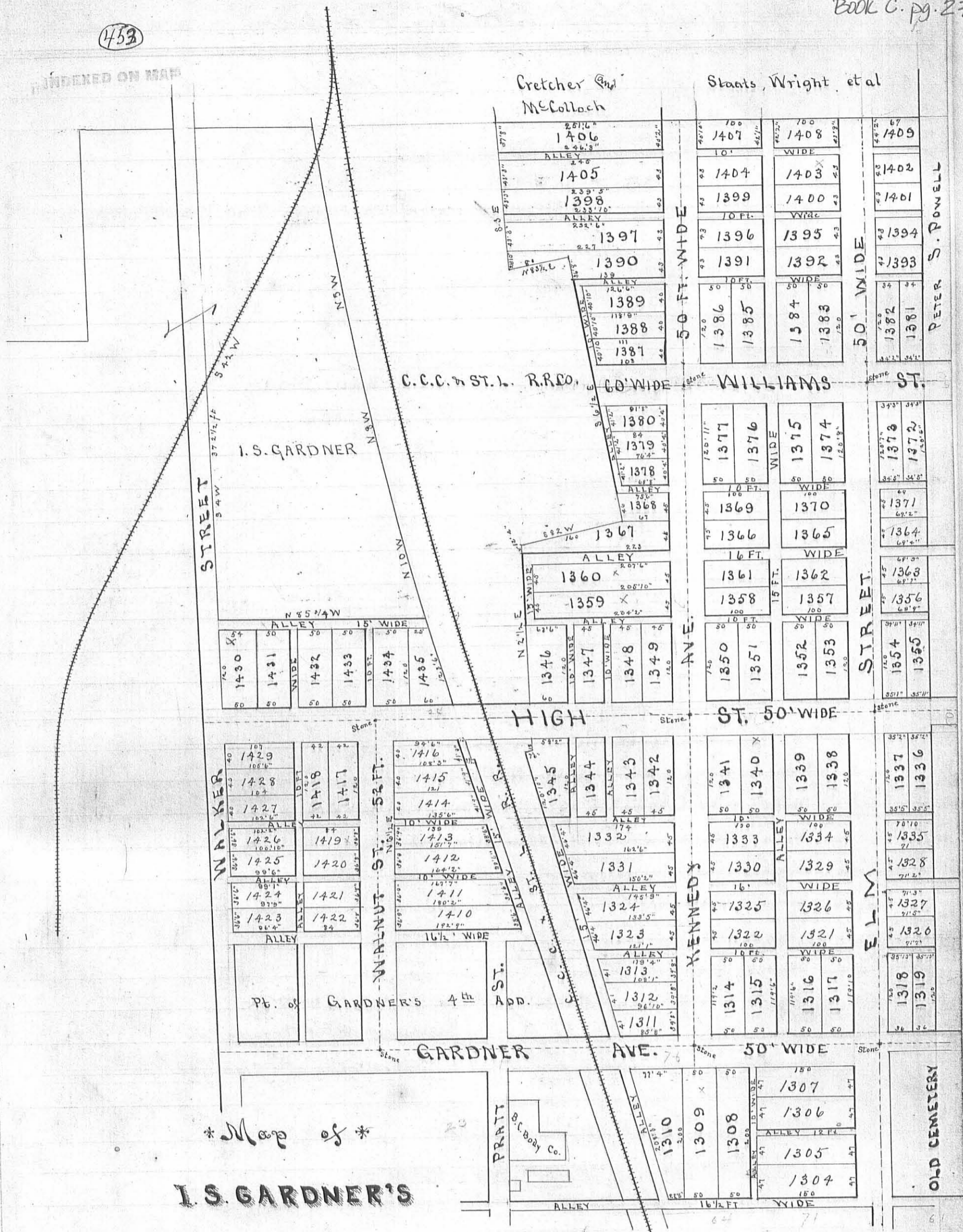


453

INDEXED ON MAP



* Map of *

I. S. GARDNER'S

5th ADDITION

TO

BELLEFONTAINE

Surveyor's Certificate —

I, the undersigned Surveyor, do hereby certify that the annexed plat is a correct representation of Gardner's 5th Addition to Bellefontaine O. being part of Section No. 35. T. 4. R. 14. as surveyed by me Mar. 26-31- April 1 to May 1- 1891. at request of the proprietor

I. S. Gardner

James C. Pondre
Surveyor Logan Co. O.