

Dr. Hamer Survey

Susie E. Arbogast Vol. 173 Page 330
All of 163 Except 80' off of N. End.

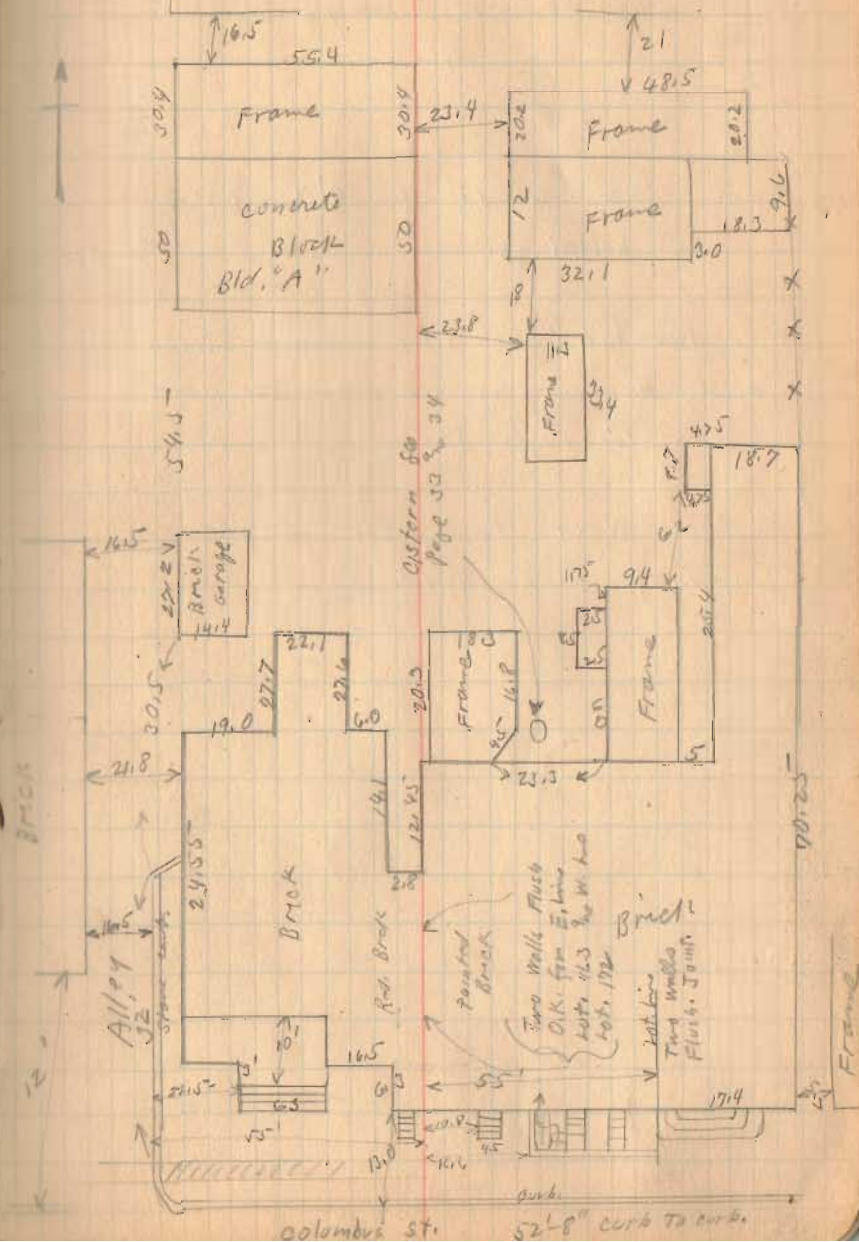
Bertna C. Stinchcomb Vol. 120 Page 325

W. W. Hamer Vol. 77 Page 636

639
INDEXED ON MAP
See Drawer R
914

July - 4 - 1927
Fine clay.
R. E. Wright
Bill Wright.

32



Dr. Hamer Survey (Continued)

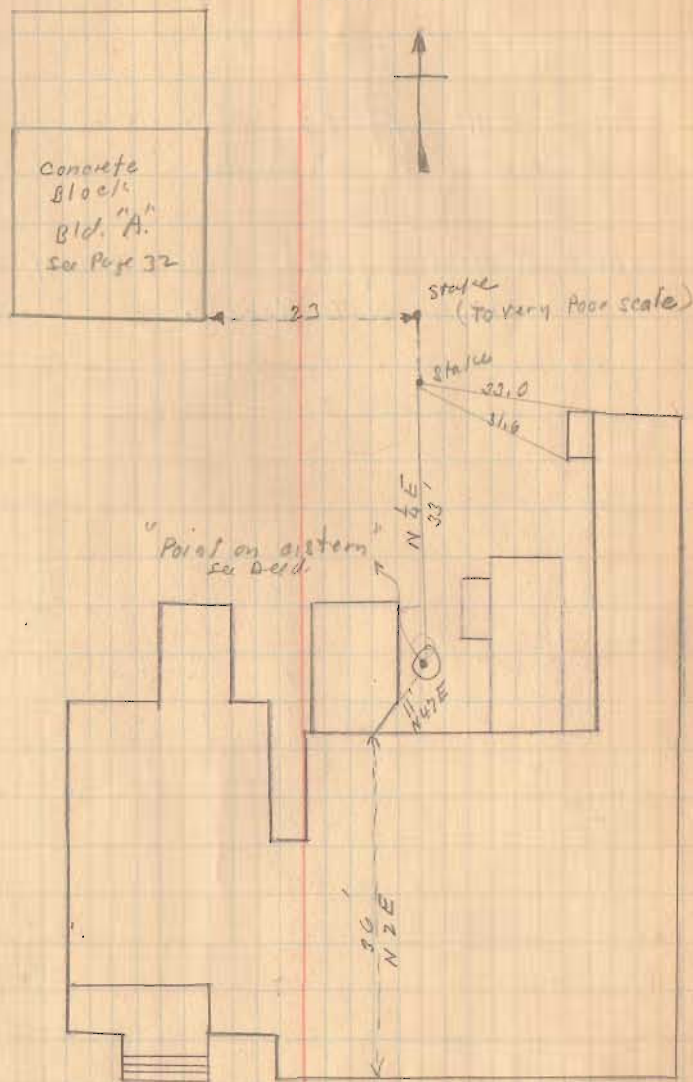
See Page 32 for Distances
on buildings.

Reestablished line between Stinchcomb
and Hamer as shown. See Deed
Vol. 120 Page 325

See Next Page for larger
map of Part sold.

7-4-27

33



Dr. Hamer Survey (Continued)

ABC ($11\frac{1}{2}$ sq. feet) To be Transferred
from Hamer To Stinchomb

BDEF ($10\frac{1}{2}$ sq feet) To be Transferred
from Stinchomb To Hamer.

7-4-27

34

