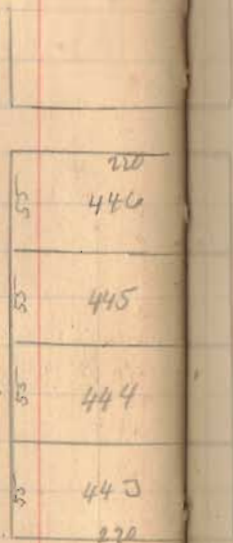
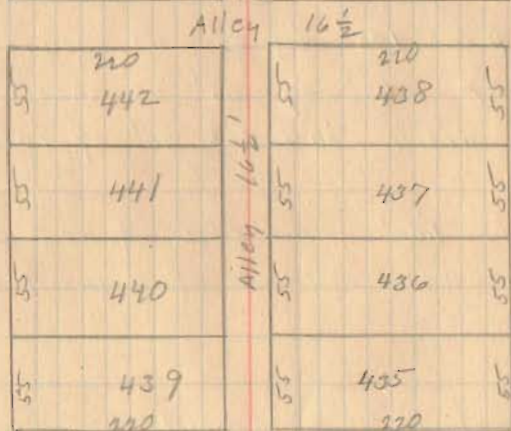


Bassett Surrey  
 Lot 435 N. Main St.

Plat shows Powell's  
 1st Addition as  
 shown on Plat Book.  
 See next Page for  
 Surrey.



Detroit St. 60'



Brown Ave 30'

Main St. 80'

July-23-1927

Wright  
 Ed. Core.

640  
 INDEXED ON MAP  
 See Drawer R

Bassett Surrey (Continued)

Measured from  $\frac{1}{2}$  of Main To  $\frac{1}{2}$  of Detroit.  
 Note 2.00 excess. Lot 435 would  
 therefore get 1.00' excess E. 9<sup>th</sup> W.

BCDG 175' by 65' as shown.

GDEF 46' by 65' as shown note  
 this width includes 10' of lot 436.

F is 100' from edge of walk and  
 1.00' west of end of cement walk.

- A - Stone Monument
- B - Stone post.
- C 1" Iron pipe placed by Wright
- D " " " " " "
- E " " " " " "
- F " " " " " "
- G " " " " " "

