

Elizabeth Wood. W. Colo. St  
May 1917

Bearing Colo - N 85 W

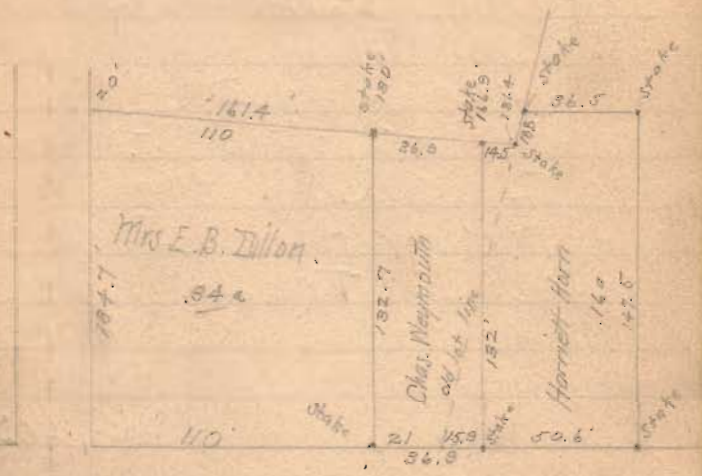
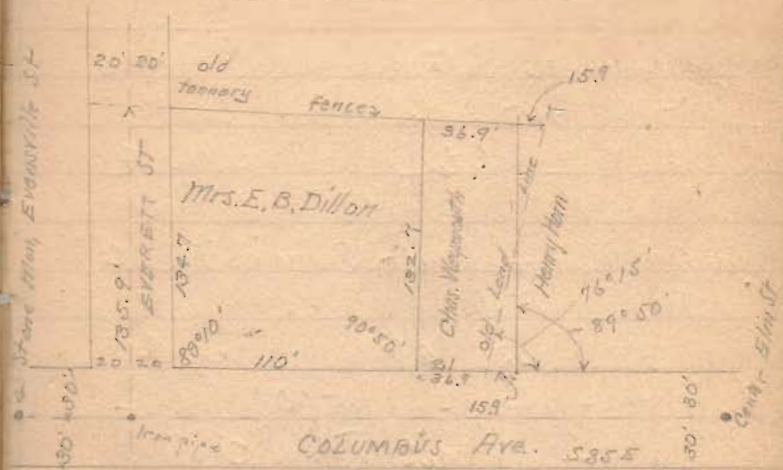
E. line (Random) N 7 1/2 E

Dist. bet. stakes at N End Jan Horn  
= 36.6' N 80 W

Case E. line Horn N 7 1/4 + E

970  
INDEXED ON MAP

Plats copied from City Engrs  
Record #1, page 116.  
Surveyed Apr 4, 1904, S.A. Beckman



Line along Ditch

Commence stake NW<sup>1</sup>/<sub>4</sub> Horn  
at 107, old fence post E.  
bank of ditch N 2 1/2' E

at 193.4 Cent S. rail T & C  
Main track

at 203.3 (about) Big 4  
Rt of way - 5' 0" N. of  
Cent of N. rail T & C.

at 1141.8 stake S. side T & C Rt of way

N. line || to R.R.  
at 45.5 stake 5.0' from  
T & C Rail (and)  
17.0' feet from Cent  
CS & C Tracks

Dist bet. stakes, N. line, 60.9'

E. line -  
Commence 24" N. of cement  
sediment -  
at 159 stake at N end  
10' alley  
at 159+165 5 ft N.  
of N. rail T & C & 17' from  
Cent Big 4.  
at 159+984 stake at  
T & C Rt of way  
at  
at 147' found remains of old  
oak stake in line as run.

Corners as set

NE  $\angle$  -  $\frac{3}{4}$ " gas pipe  $\odot$  p.c. coal  $\odot$  slate

SW angle at NE  $\angle$   $116^{\circ} 13'$

at 30.5 N. of N. line cement sidewalk  
pass 8.3 E. of 2" Plum tree  
(cherry)

NW  $\angle$   $\frac{3}{4}$ " gas pipe  $\times$  p.c. furnace  
slag

with hole, in top big boulder, 3' 2"  
from N. end thereof

N 77 W. 42.3'

Cent. S. rail, ~~small~~ main line 51.7'

T. & A. E. N  $21\frac{1}{2}$  E

Cent. S. rail C.S. & E. N  $21\frac{1}{2}$  E, 76.9

SE angle at NW  $\angle$   $77^{\circ} 02'$

at NE  $\angle$  and NW  $\angle$ 's. Horn, found  
slates set by S. B. Chapman.  
These slates taken up  $\odot$   $\frac{3}{4}$ "  
gas pipes driven each place

at SE  $\angle$ . with -

SE  $\angle$  foundation, Wood's house NW 23.80  
SW  $\angle$  " McCracken's " NE 18.15'

Meas S. line on N. side Colo. 50.4'