

Feb. 16, 1929
Thawing
Wright
George Henry.



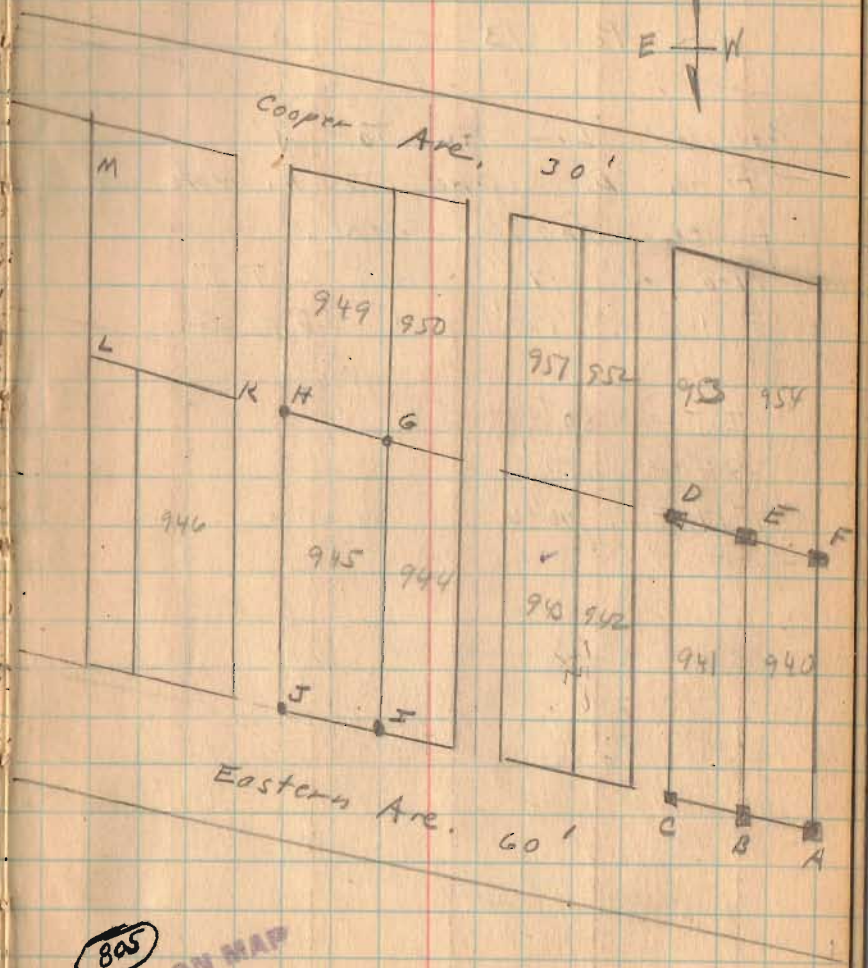
M^o Claim Survey
Lot 945 Eastern Ave.

Lots as shown on Plat Book
171'-6" x 50' except 948 which
is 171'-6" x 69 1/2' and lot 947 which is
171'-6" x 19'
Alleys 10'
Slices Addition New Page 14
of Plat Book.

- A Hubs by Mitchell See City Record.
 - B " " " " " "
 - C " " " " " "
 - D " " " " " "
 - E " " " " " "
 - F " " " " " "
- All these hubs found.

- G 1 1/2" Pipe Placed By Wright.
- H 1/2" Iron " " "
- I 1/2" " " " "
- J 1/2" Pipe " " "

(See Page 50 for lot. 943)



805
INDEXED ON MAP

See Drawer R

(see Next Page)

M^e claim Survey (continued)

See Page 13

Produced Line AC To J
set on D. Sighted To H. Note old
fence on line GHKL.

Measured 170' from C To I
" 170' " D To G.

$$IJ = 50'$$

$$GH = 50'$$

$$JH = 170' - 6''$$

