

REC'D 6-27-05 SMY OK

MAIN STREET (60 FEET WIDE)

4.7ft

N 00°30'00" E

42.50'

LOT 1453

2.4ft

S 89°15'38" E

160.52'

8.5' WIDE ASPHALT DRIVE

LOT 1454

ASPHALT

42.50'

S 00°56'45" W

15' ALLEY

160.19'
N 89°15'38" W

LOT 1455

A RETRACEMENT SURVEY OF THE
SIMON E. HERRING AND ALBERTA V. HERRING
LOT 1454

VOLUME 268, PAGE 376
HUBBARD & SNYDER ADDITION
PLAT CABINET A, SLIDE 21
CITY OF BELLEFONTAINE
LAKE TOWNSHIP
LOGAN COUNTY, OHIO



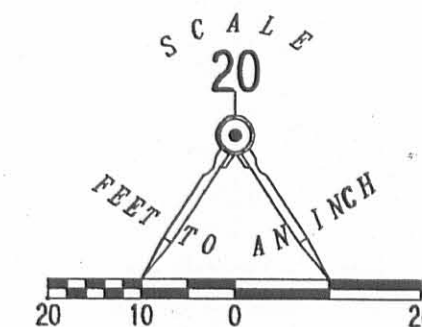
ORIGINAL STAMP IN GREEN

SURVEYED BY:

[Signature]
JEFFREY I. LEE
PROFESSIONAL SURVEYOR 6359
JUNE 20, 2005

COPYRIGHT 2005 BY:
LEE SURVEYING & MAPPING CO., INC.
117 North Modriver Street
BELLEFONTAINE, OHIO 43311
(937) 593-7335

ADW D0605 3509065 L-3509065-3



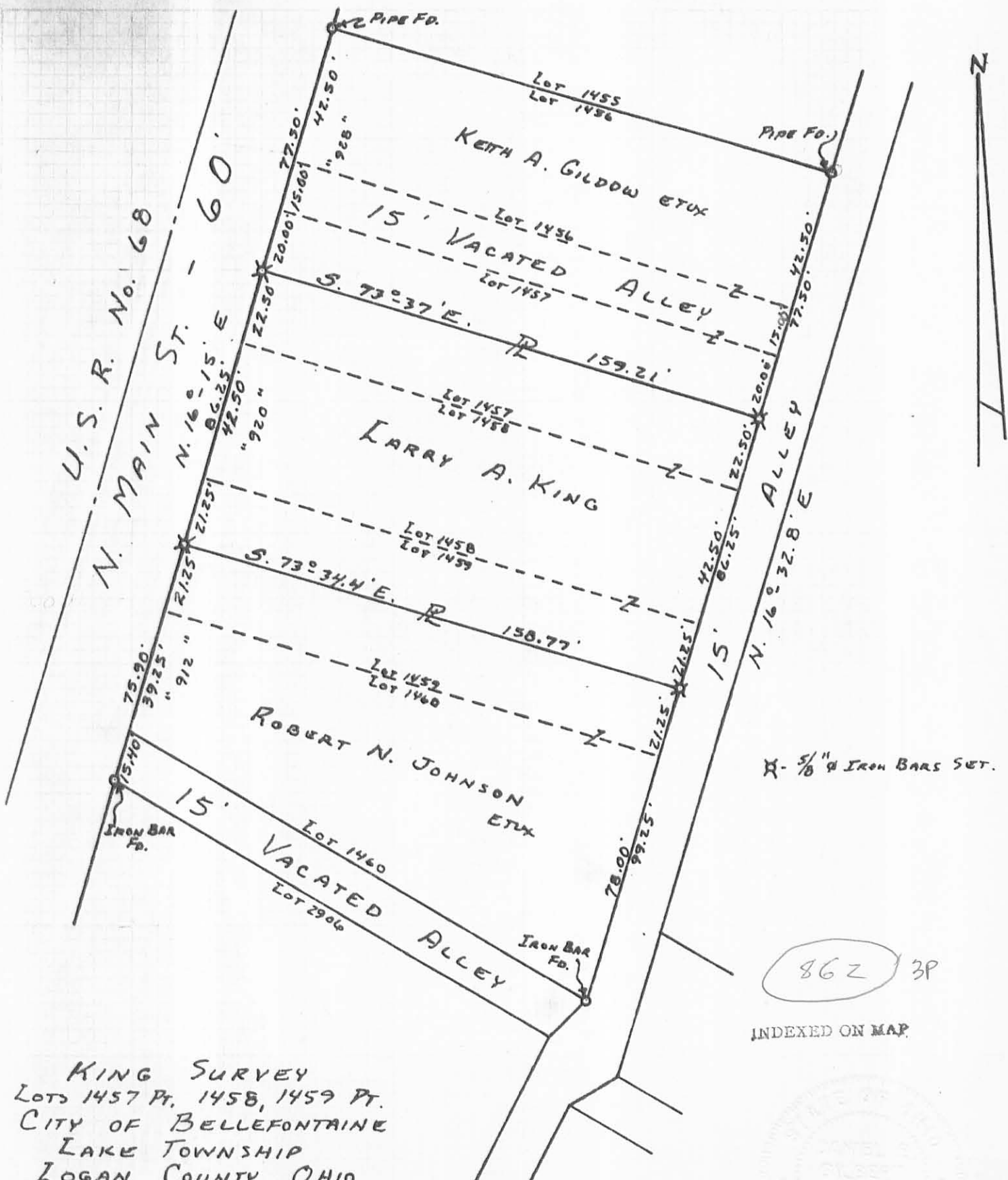
LEGEND

- 5/8 INCH IRON ROD SET
- ⊙ 3/4 INCH IRON PIPE FOUND
- ⊠ 1 INCH SQUARE IRON BAR FOUND

2 WORKING DAYS
BEFORE YOU DIG
CALL TOLL FREE 800-362-2764
OHIO UTILITIES PROTECTION SERVICE

INDEXED ON MAP

06/27/05



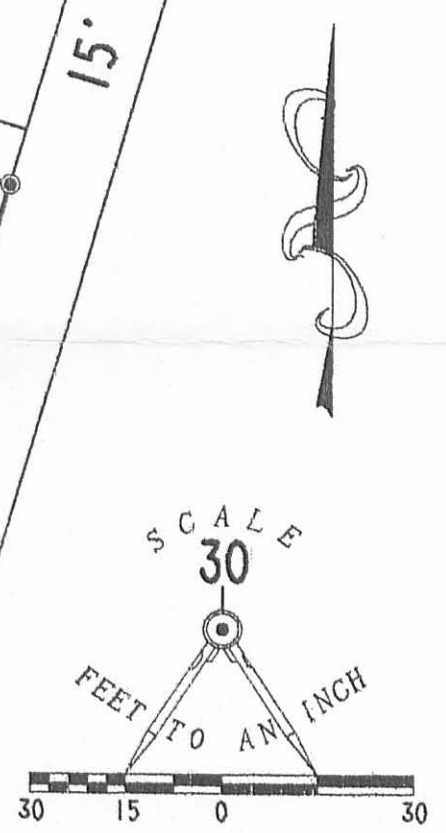
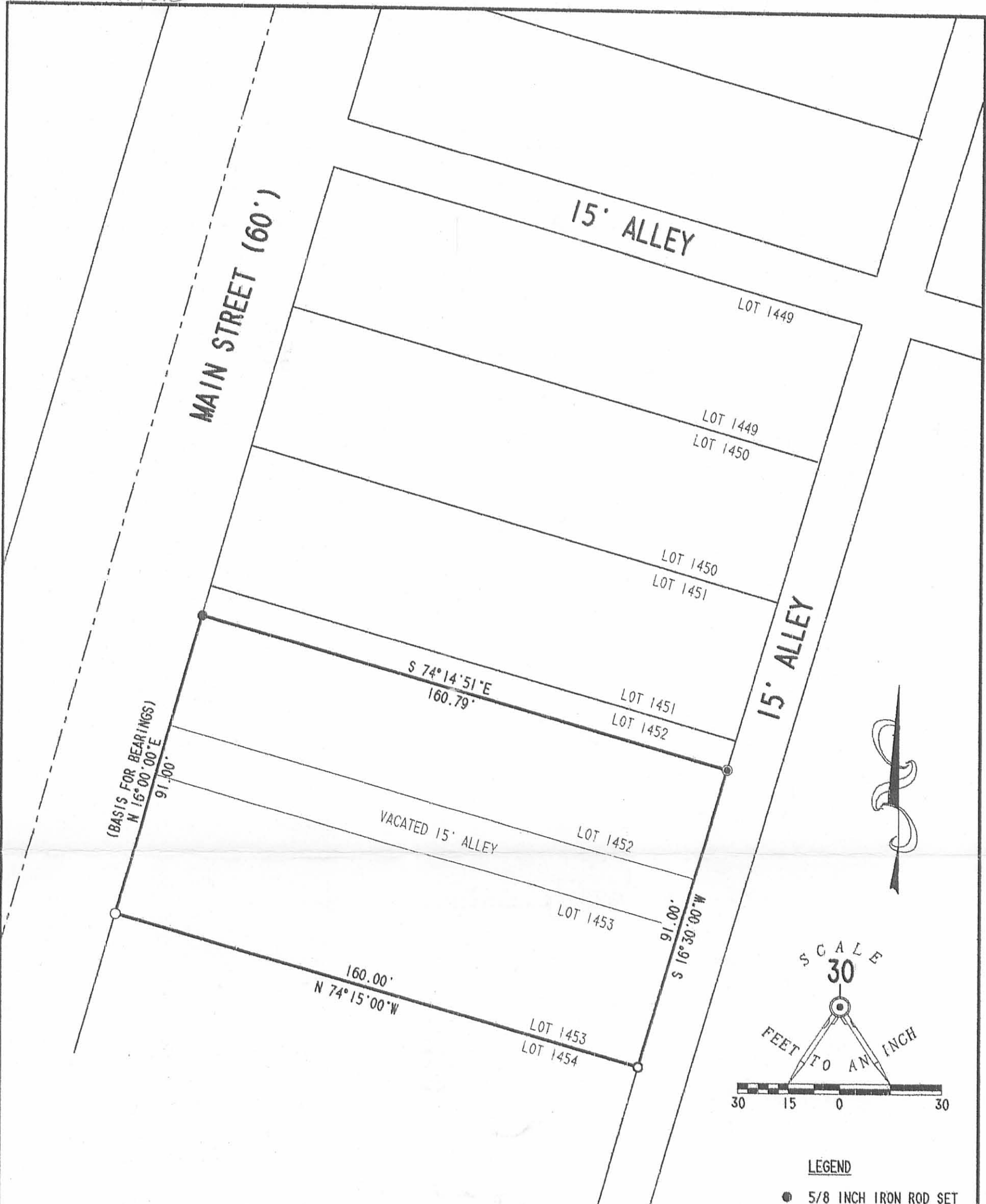
X - 5/8" IRON BARS SET.

86Z 3P

INDEXED ON MAP

KING SURVEY
 LOTS 1457 PT. 1458, 1459 PT.
 CITY OF BELLEFONTAINE
 LAKE TOWNSHIP
 LOGAN COUNTY, OHIO
 OCTOBER 22, 1980
 SCALE: 1" = 40'

SURVEYED AND PLATTED BY:
 DANIEL E. GILBERT, P.S.
 REG. SUR. NO. 5402
 1041 N. MAIN ST.
 BELLEFONTAINE, OHIO



- LEGEND**
- 5/8 INCH IRON ROD SET
 - 1 INCH IRON ROD FOUND
 - 1 INCH IRON PIPE FOUND
 - ⊙ MAG NAIL SET

RETRACEMENT SURVEY OF THE
 STEVEN L. BUCHENROTH AND MELANIE A. BUCHENROTH
 LOT 1453 AND PART OF LOT 1452 AND
 15' VACATED ALLEY
 OFFICIAL RECORD 611, PAGE 687
 HUBBARD AND SNYDER ADDITION
 PLAT CABINET A, SLIDE 21
 CITY OF BELLEFONTAINE
 LAKE TOWNSHIP
 LOGAN COUNTY, OHIO

INDEXED ON MAP
 862 4P



SURVEYED BY:
(Signature)
 JEFFREY I. LEE
 PROFESSIONAL SURVEYOR 6359
 JANUARY 2, 2003

COPYRIGHT 2003 BY:
 LEE SURVEYING & MAPPING CO., INC.
 117 North Madriver Street
 BELLEFONTAINE, OHIO 43311
 (937) 593-7335

2 WORKING DAYS
BEFORE YOU DIG
 CALL TOLL FREE **800-362-2764**
 OHIO UTILITIES PROTECTION SERVICE.

ORIGINAL STAMP IN GREEN

Surveyed Sept 1891. C.K. 2-13-03. by W.A.G. 1777

MAIN

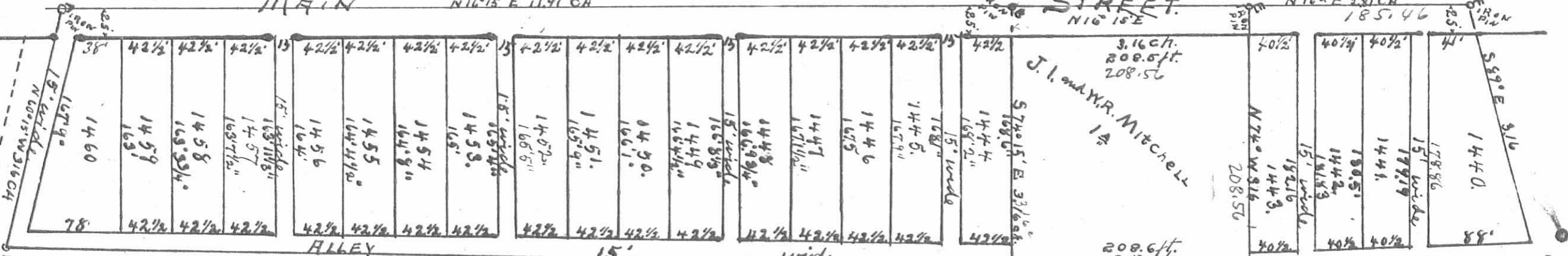
N 16° 15' E 1191 CH

STREET.
N 16° 15' E

N 16° E 281 CH

185.46

JT RICHMOND



J. I. and W. R. Mitchell
1/2

ALLEY

S 16° 30' W 12.30 CHAINS 15' wide

Snyder and Hubbard. Add.

INDEXED ON MAP
862 5P