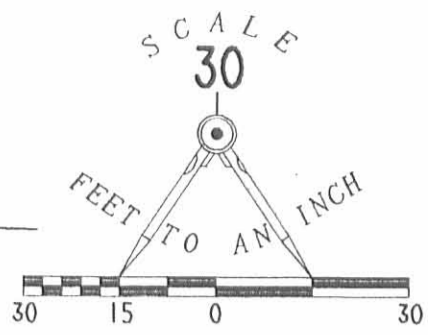
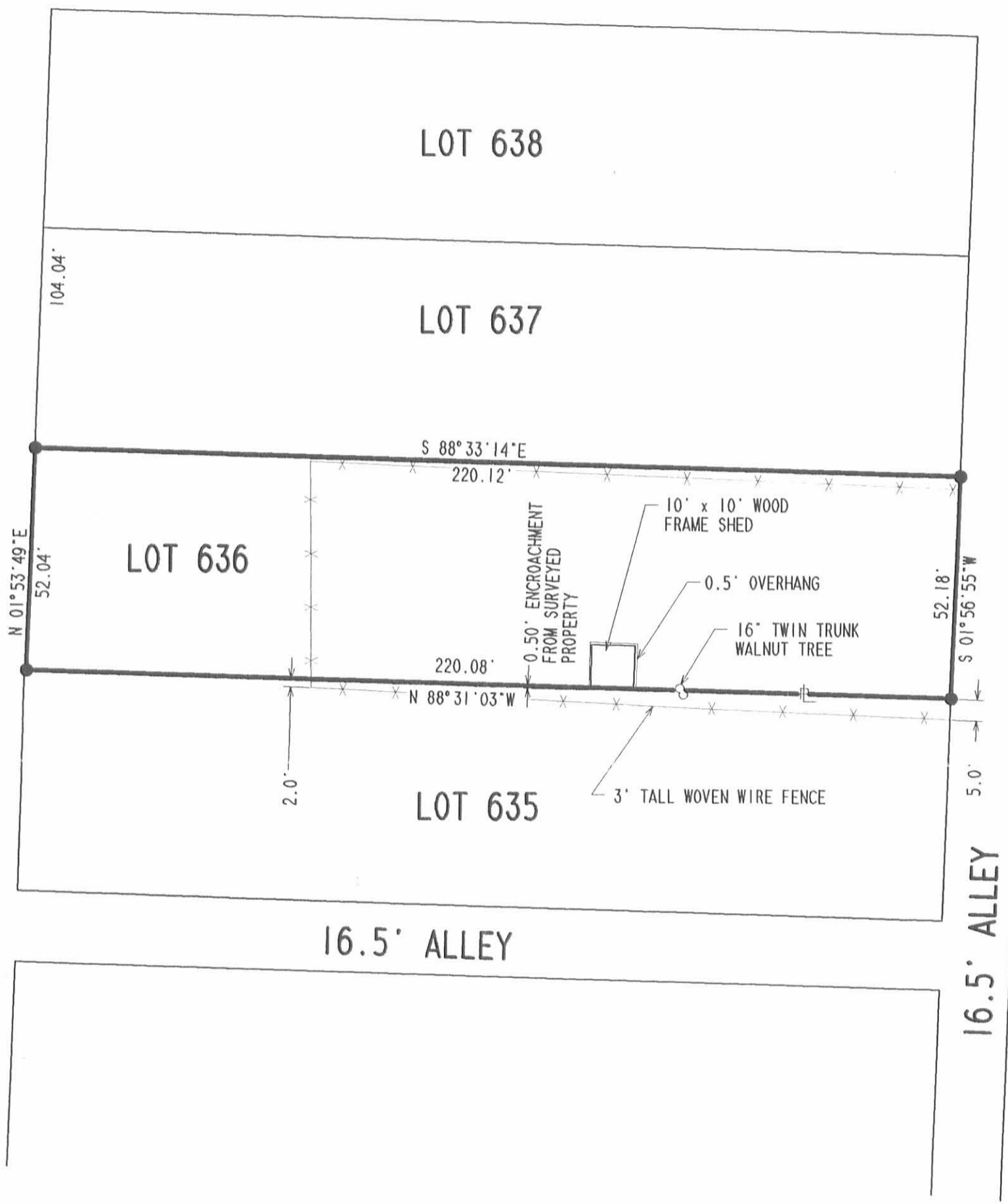


REC'D 10-27-97 smy



MADRIVER STREET (60')

WILLIAMS AVENUE (50')



LEGEND

- 5/8 IRON ROD SET
- ⊙ MAG NAIL SET
- PROPERTY LINE

RETRACEMENT SURVEY OF LOT 636  
 STANTON ADDITION NO. 2  
 PLAT CABINET A. SLIDE 9  
 CITY OF BELLEFONTAINE  
 LAKE TOWNSHIP  
 LOGAN COUNTY, OHIO

SURVEYED BY:

*Jeffrey I. Lee*  
 JEFFREY I. LEE  
 PROFESSIONAL SURVEYOR 6359  
 OCTOBER 23, 1997



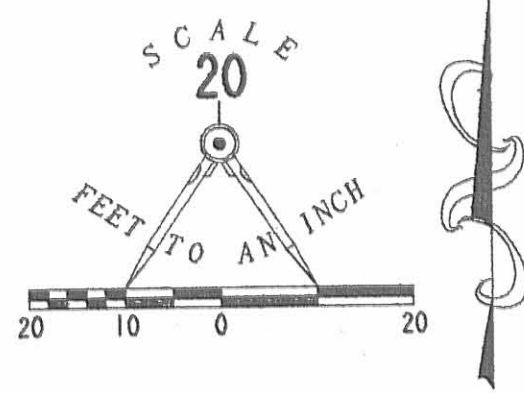
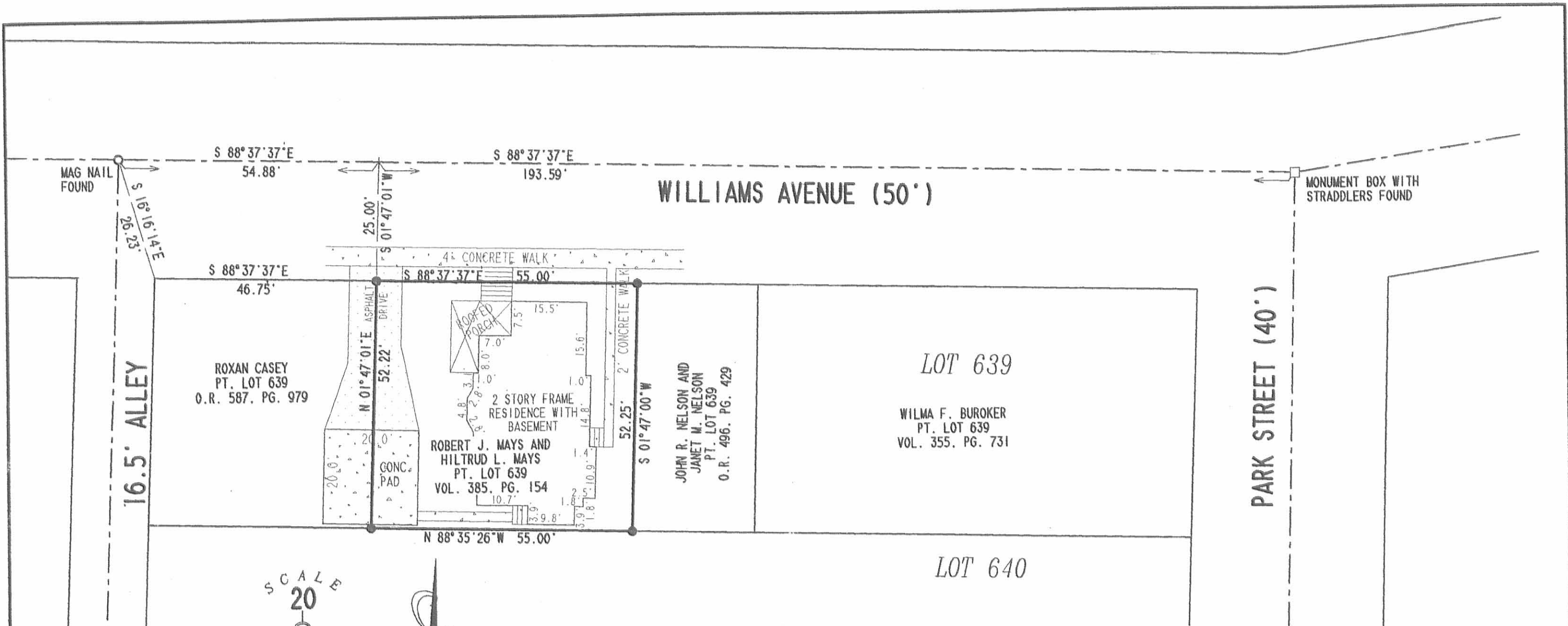
ORIGINAL STAMP IN GREEN

2 WORKING DAYS  
**BEFORE YOU DIG**  
 CALL TOLL FREE **800-362-2764**  
 OHIO UTILITIES PROTECTION SERVICE.

INDEXED ON MAP 886 IP

COPYRIGHT 1997 BY:  
 LEE SURVEYING & MAPPING CO., INC.  
 117 North Madriver Street  
 BELLEFONTAINE, OHIO 43311  
 (937) 593-7335

REC'D 5-30-03 SWJ OK



**RETRACEMENT SURVEY OF THE  
 ROBERT J. MAYS AND HILTRUD L. MAYS  
 PART OF LOT 639  
 VOLUME 385. PAGE 154  
 TRANS DEPOT ADDITION  
 PLAT CABINET A. SLIDE 7  
 CITY OF BELLEFONTAINE  
 LAKE TOWNSHIP  
 LOGAN COUNTY, OHIO**



SURVEYED BY:  
  
 JEFFREY I. LEE  
 PROFESSIONAL SURVEYOR 6359  
 MAY 21, 2003

COPYRIGHT 2002 BY:  
**LEE SURVEYING & MAPPING CO., INC.**  
 117 North Madriver Street  
 BELLEFONTAINE, OHIO 43311  
 (937) 593-7335  
 D 407 EASTWOOD L-3590-3

- LEGEND**
- 5/8 INCH IRON ROD SET
  - MAG NAIL FOUND
  - MONUMENT BOX WITH STRADDLERS FOUND

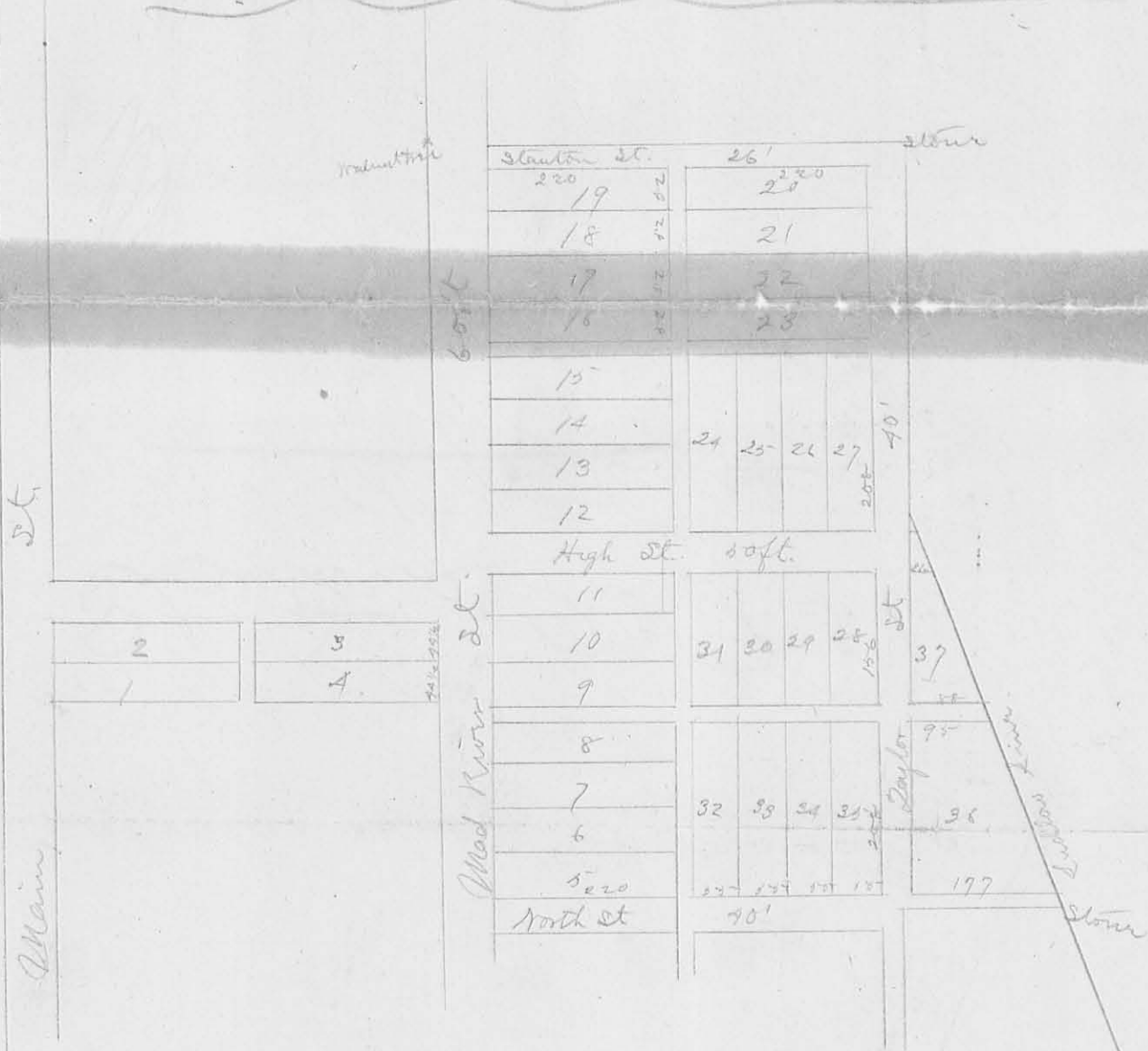
2 WORKING DAYS  
**BEFORE YOU DIG**  
 CALL TOLL FREE **800-362-2764**  
 OHIO UTILITIES PROTECTION SERVICE.

INDEXED ON MAP  
 886 2P

886 3P

INDEXED ON MAP

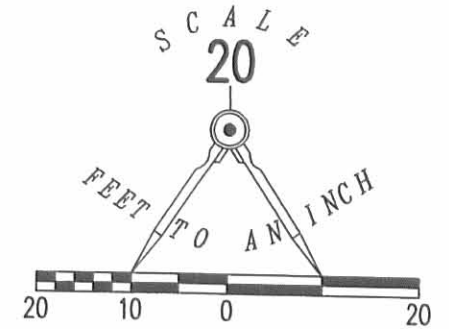
# Stoutons - Add to Bellefontaine



REC'D 8-17-11 SMY OK

LEGEND

- 5/8 INCH IRON ROD SET WITH PLASTIC I.D. CAP STAMPED "LSM 7347"
- 5/8 INCH IRON ROD FOUND
- MAG NAIL SET
- ⊗ MAG NAIL FOUND
- ☒ MONUMENT BOX WITH STRADDLERS FOUND



WILLIAMS AVENUE (50 FEET WIDE)

N 88°37'37" W  
248.45'

16.5 FEET WIDE ALLEY

N 01°56'54" E  
52.19'

BASIS FOR BEARINGS  
S 88°37'37" E

46.75'

ROBERT J. MAYS AND  
HILTRUDE L. MAYS  
PART OF LOT 639  
O.R. 1015, PG. 353

0.056 ACRE

S 01°47'01" W  
52.22'

ROBERT J. MAYS AND  
HILTRUDE L. MAYS  
PART OF LOT 639  
VOL 385, PG. 154

46.90'  
N 88°35'26" W

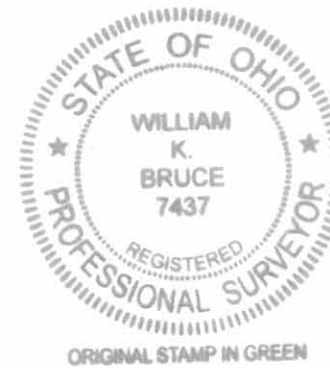
STANTON'S 2ND ADDITION  
PLAT CABINET A, SLIDE 9

LOT 639

LOT 640

ALFRED E. SELLERS AND  
BRITTA B. SELLERS  
LOT 640  
O.R. 977, PG. 906

RETRACEMENT SURVEY OF THE  
ROBERT J. MAYS AND HILTRUDE L. MAYS  
PART OF LOT 639  
OFFICIAL RECORD 1015, PAGE 353  
STANTON'S 2ND ADDITION  
PLAT CABINET A, SLIDE 9  
CITY OF BELLEFONTAINE  
LAKE TOWNSHIP  
LOGAN COUNTY, OHIO



PARK STREET (40 FEET WIDE)

SURVEYED BY:

*William K. Bruce*  
WILLIAM K. BRUCE  
PROFESSIONAL SURVEYOR 7437  
AUGUST 15, 2011

COPYRIGHT 2011 BY:  
LEE SURVEYING & MAPPING CO., INC.  
117 North Madriver Street  
BELLEFONTAINE, OHIO 43311  
(937) 593-7335  
surveys@lsminc.us  
ADW D0811 35900811 L-3590-3

2 WORKING DAYS

BEFORE YOU DIG

CALL TOLL FREE 800-362-2764

OHIO UTILITIES PROTECTION SERVICE

INDEXED ON MAP

886 4P

REC'D 11-14-11 SMM/CLC

# Lee Surveying and Mapping Co., Inc.

Land Surveys • Topography • Subdivisions • Construction Layout

117 N. Madriver St.  
Bellefontaine OH 43311



Phone: (937) 593-7335  
Fax: (937) 593-7444  
surveys@lsmcinc.us

## SELLERS 0.011 ACRE

Lying in the City of Bellefontaine, Lake Township, Logan County, Ohio.

Being out of the Alfred E. Sellers and Britta B. Sellers Lot 640 of Stanton's 2nd Addition, (Plat Cabinet A, Slide 9) deeded and described in Official Record 977, Page 906 of the Logan County Records of Deeds and being more particularly described as follows:

Commencing at a 5/8 inch iron rod found at the intersection of the south right-of-way of Williams Avenue (50 feet wide) and the east right-of-way of a 16.5 feet wide alley at the northwest corner of Lot 639 of said Addition.

THENCE, with the west line of Lot 639, S 01°-56'-54"W, a distance of 52.19 feet to a 5/8 inch iron rod found at the TRUE POINT OF BEGINNING.

THENCE, with the south line of the Robert J. Mays and Hiltrude L. Mays part of Lot 639, (O.R. 1015, Pg. 353), the south line of the Robert J. Mays and Hiltrud L. Mays part of Lot 639 (Vol. 385, Pg. 154) and the south line of the Dale Wischmeyer Part of Lot 639 (O.R. 697, Pg. 42, Tract II), S 88°-35'-26"E, a distance of 102.58 feet to a 5/8 inch iron rod set.

THENCE, S 02°-14'-36"E, a distance of 4.72 feet to a 5/8 inch iron rod set.

THENCE, N 88°-14'-44"W, a distance of 87.96 feet to a 5/8 inch iron rod set.

THENCE, S 83°-30'-07"W, a distance of 15.12 feet to a 5/8 inch iron rod set on the east right-of-way of a 16.5 feet wide alley.

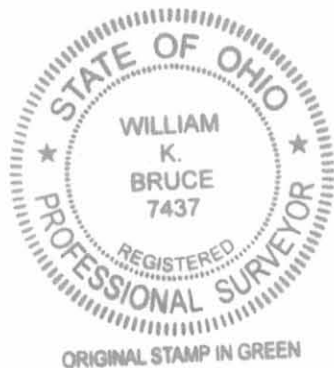
THENCE, with the east right-of-way of a 16.5 wide alley, N 01°-56'-54"E, a distance of 6.27 feet to the point of beginning.

Containing 0.011 acre.

Property is subject to any and all previous easements and rights-of-way of record.

The basis for bearings is the center-line of Williams Avenue, being N 88°-37'-37"W, and all other bearings are from angles and distances measured in a field survey by Lee Surveying and Mapping Co., Inc. on November 14, 2011.

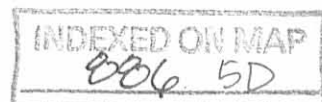
Description prepared by:



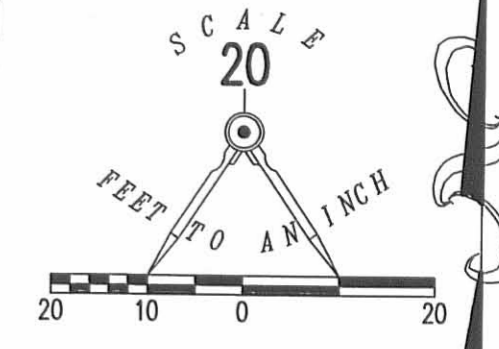
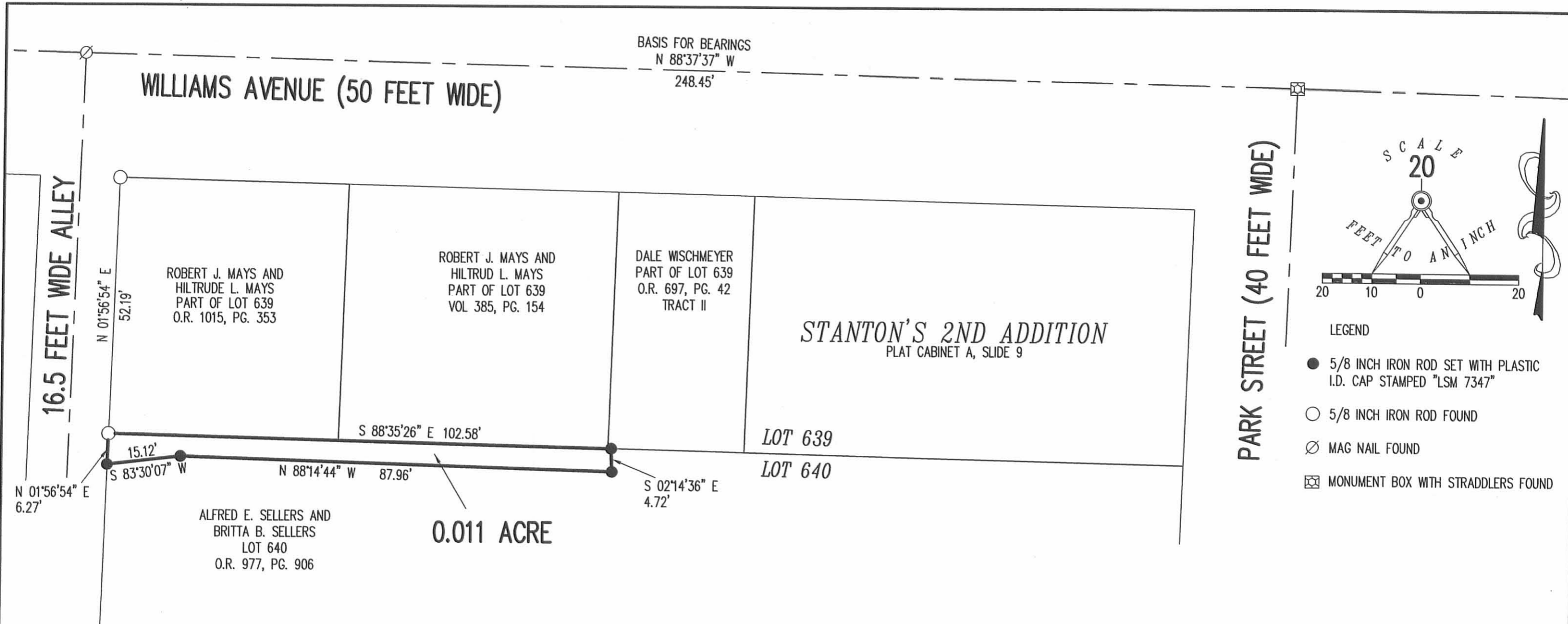
*William K. Bruce*

William K. Bruce  
Professional Surveyor 7437  
November 14, 2011

L-35901111



REC'D 11-16-11 EMM OK



SURVEY OF A 0.011 ACRE TRACT OUT OF THE  
ALFRED E. SELLERS AND BRITTA B. SELLERS

LOT 640  
OFFICIAL RECORD 977, PAGE 906  
STANTON'S 2ND ADDITION  
PLAT CABINET A, SLIDE 9  
CITY OF BELLEFONTAINE  
LAKE TOWNSHIP  
LOGAN COUNTY, OHIO



SURVEYED BY:

*William K. Bruce*  
WILLIAM K. BRUCE  
PROFESSIONAL SURVEYOR 7437  
NOVEMBER 14, 2011

COPYRIGHT 2011 BY:  
LEE SURVEYING & MAPPING CO., INC.  
117 North Madriver Street  
BELLEFONTAINE, OHIO 43311  
(937) 593-7335  
surveys@lsminc.us  
ADW D1111 35901111 L-3590-3

2 WORKING DAYS  
BEFORE YOU DIG  
CALL TOLL FREE 800-362-2764  
OHIO UTILITIES PROTECTION SERVICE

INDEXED ON MAP  
006 5P