

○ - 5/8" X 30" REBARS SET.  
● - P.K. NAILS SET.

REFERENCE:  
COLUMBIA HEIGHTS SUBD.  
SLIDE CAB. A - SLIDE 56

INDEXED ON MAP  
892 1P

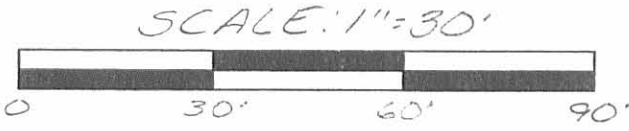
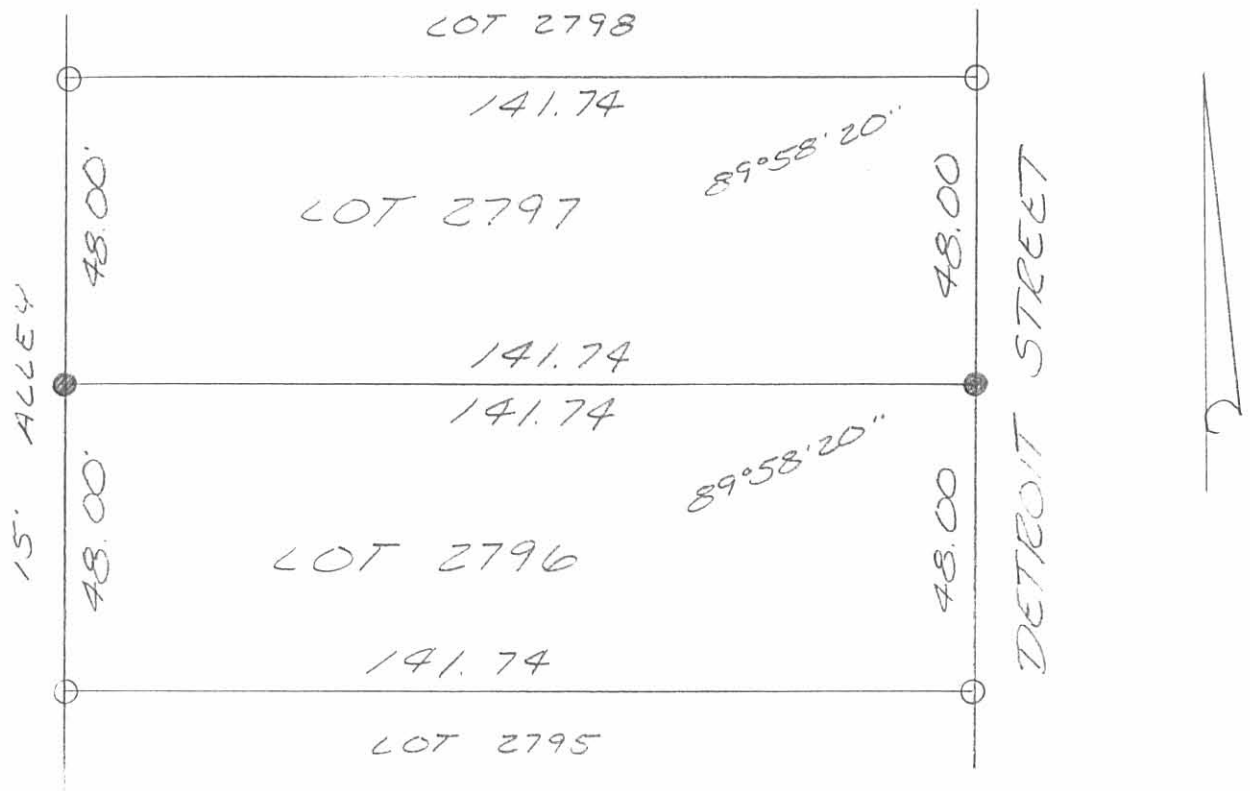
*Daniel E. Gilbert*  
DANIEL E. GILBERT, P.S.,  
REG. SUR. NO. 5402  
400 N. PARK ST.  
BELLEFONTAINE, OHIO  
43311



V.F.W. No. 1080  
SURVEY  
LOT No. 2781  
CITY OF BELLEFONTAINE  
LAKE TOWNSHIP  
LOGAN COUNTY, OHIO  
MAY 18, 1988

SCALE: 1" = 40'

088-028



LEGEND:  
 ○ = 5/8 INCH IRON BAR FOUND  
 ● = 5/8 INCH IRON BAR SET

SURVEY OF LOTS 2796 AND 2797 OF COLUMBIAN HEIGHTS ADDITION TO THE CITY OF BELLEFONTAINE IN LAKE TOWNSHIP, LOGAN COUNTY, OHIO FOR HABITAT FOR HUMANITY ON OCT. 14, 1994

INDEXED ON MAP  
892 2P



Leslie H. Geeslin  
 LESLIE H. GEESLIN  
 ZUSHYSLVANIA, O  
 (513) 468-2793

Received 7-20-94 OK SNG

GROVE AVE. (50')

A

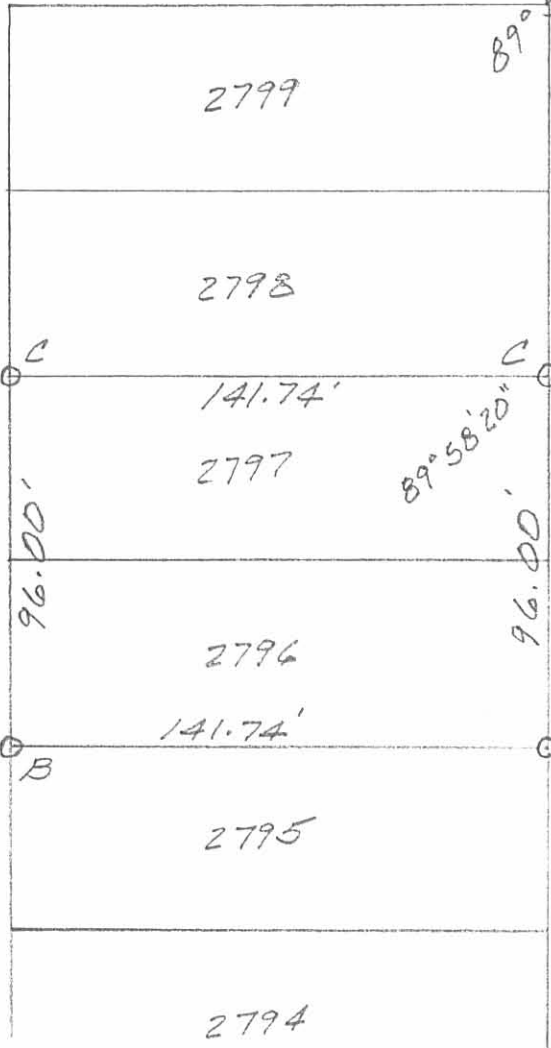
LEGEND:

- A = 1" IRON PIPE FD.
- B = 5/8" IRON BAR FD.
- C = 5/8" IRON BAR SET

N

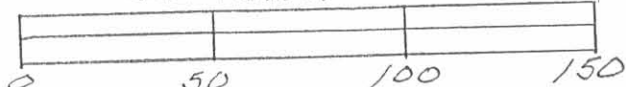


15' ALLEY



DETROIT ST. (60')

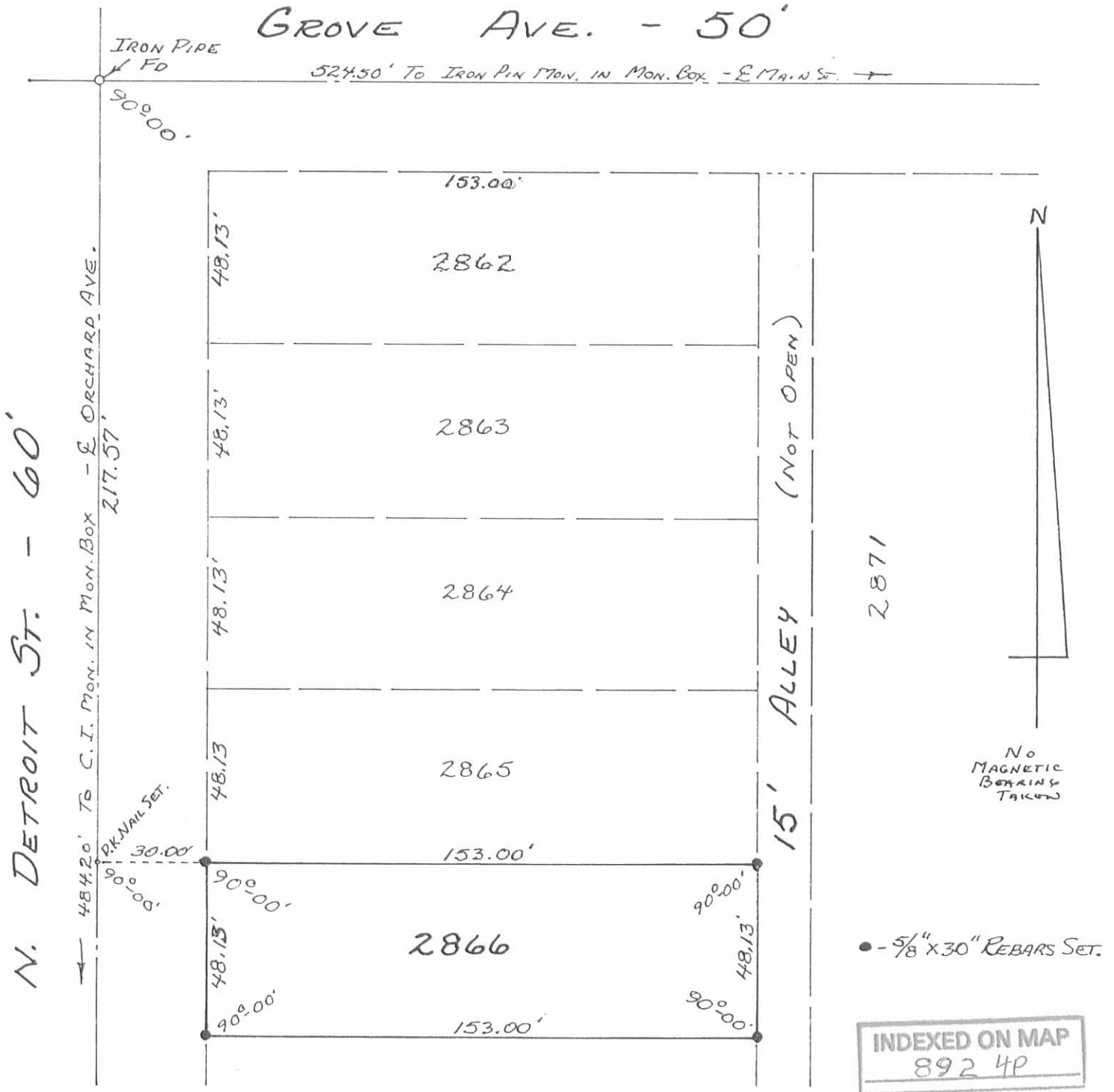
LAKE TOWNSHIP, LOGAN COUNTY  
 SURVEY OF LOTS 2796 & 2797  
 OF COLUMBIAN HEIGHTS ADD.  
 TO CITY OF BELLEFONTAINE,  
 OHIO FOR HABITAT FOR HUMANITY.  
 JULY 19, 1994  
 SCALE: 1" = 50'



*Leslie H. Geeslin*

LESLIE H. GEESLIN  
 RUSHsylvania, OHIO  
 PH 513-468-2793

INDEXED ON MAP  
 892 3P



SURVEY OF LOT No. 2866  
 CITY OF BELLEFONTAINE  
 LAKE TOWNSHIP  
 LOGAN COUNTY, OHIO  
 JUNE 6, 1987

SCALE: 1" = 40'



*Daniel E. Gilbert*  
 DANIEL E. GILBERT, P.S.  
 REG. SUR. NO. 5402  
 400 N. PARK ST.  
 BELLEFONTAINE, OHIO 43311  
 513-593-1428

Buchwalter survey

Soke Twp

Sec 25 T4 R14

(892) 5P

INDEXED ON MAP

