

Williams 3rd Detroit.

Marked same as Powell.

Williams 3rd Main. Monument.

Top screw Hyd NE 32.65'

Powell 3rd Detroit Iron pin.

Iron valve box E of N. 6.9' same S of E ^{edge} 8.5'

same S of W 2.6 Hydrant SW. 27.2'

Lead points are set in circular curb at each cor. of the

Powell and Main intersection 14' from center line

Iron bar.

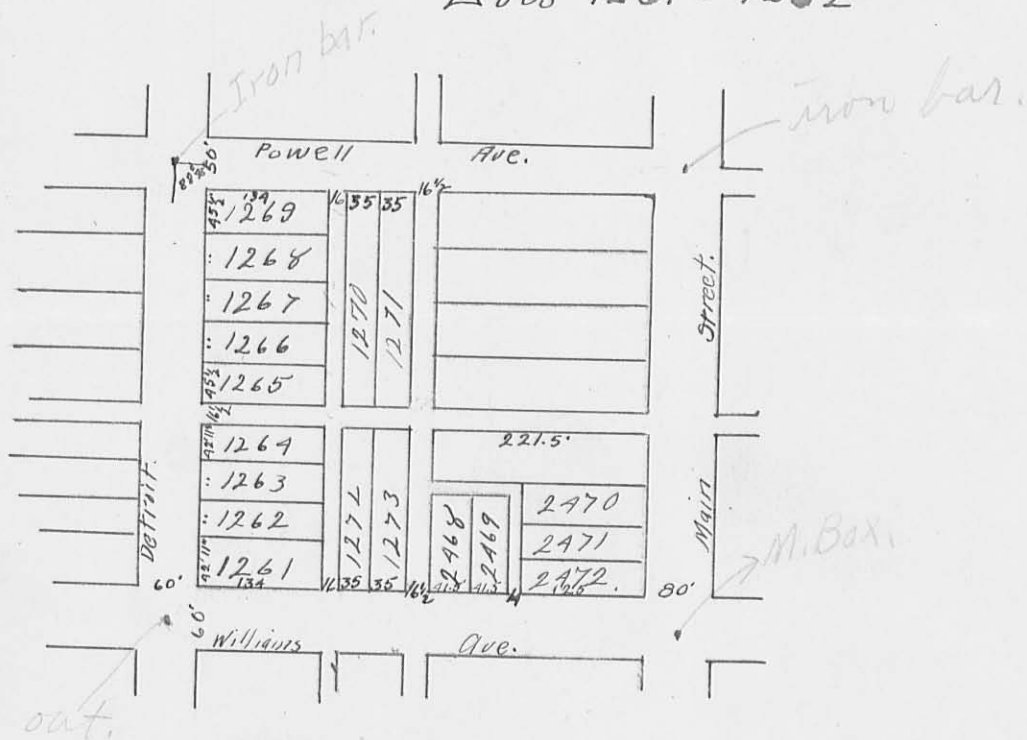
Hyd east 27.75' Hsh SW 38.2' sugar NW 39.4'

594 IP

INDEXED ON MAP

Miller survey Bellefontaine

Lots 1261 & 1262



A. J. Miller Survey.
 Lots 1261 & 1262.
 Clarence Moore. help. $\frac{1}{2}$ da.

Measurement @ Williams to @
 Powell. on Detroit. 470.6'

894

May 2, 1911

