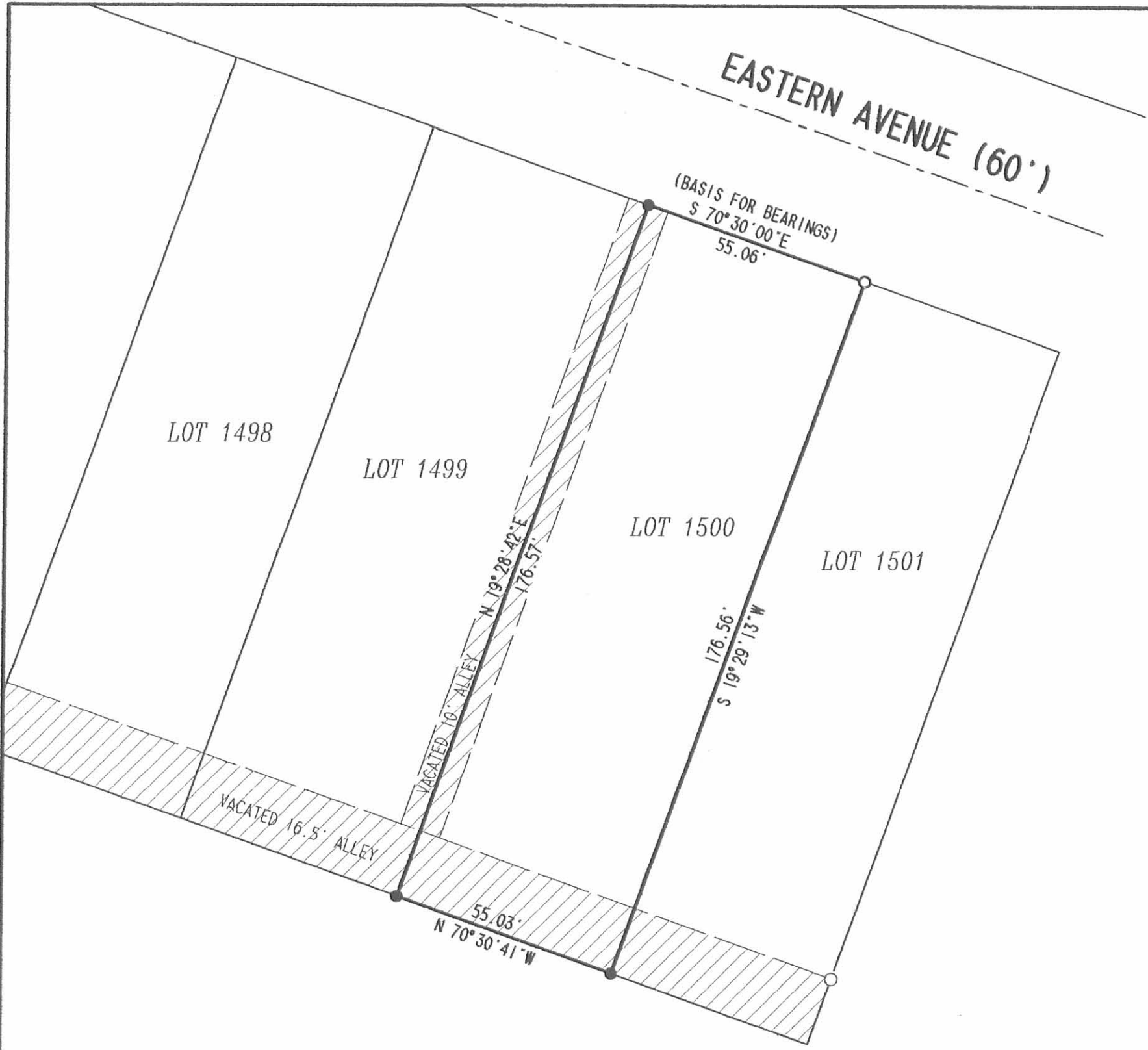
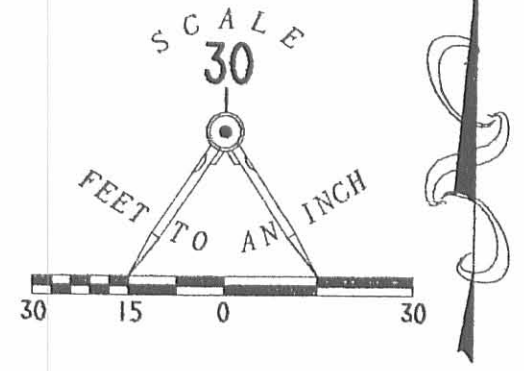


Received 9-27-02 OKGCH



LEGEND

- 5/8 INCH IRON ROD SET
- 5/8 INCH IRON ROD FOUND
- 1 INCH PIPE FOUND



RETRACEMENT SURVEY OF LOT 1500
 OF POWERS ADDITION NO. 4
 PLAT CABINET A. SLIDE 23
 CITY OF BELLEFONTAINE
 LAKE TOWNSHIP
 LOGAN COUNTY, OHIO



ORIGINAL STAMP IN GREEN

SURVEYED BY:

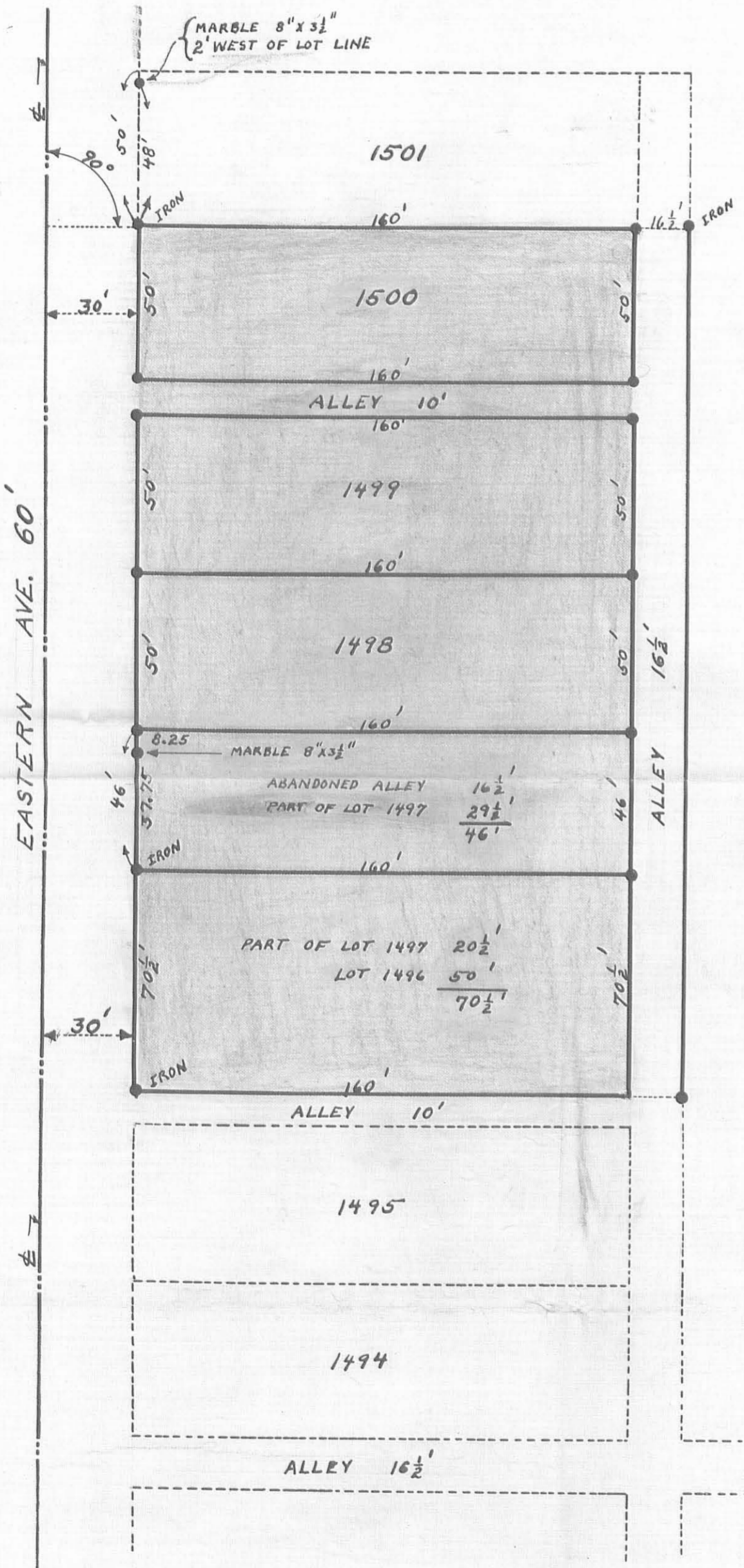
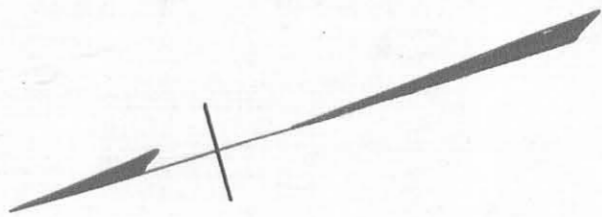
[Signature]
 JEFFREY T. LEE

PROFESSIONAL SURVEYOR 6359
 SEPTEMBER 19, 2002

COPYRIGHT 2002 BY:
 LEE SURVEYING & MAPPING CO., INC.
 117 North Madriver Street
 BELLEFONTAINE, OHIO 43311
 (937) 593-7335

2 WORKING DAYS
BEFORE YOU DIG
 CALL TOLL FREE **800-362-2764**
 OHIO UTILITIES PROTECTION SERVICE.

INDEXED ON MAP
 912 IP



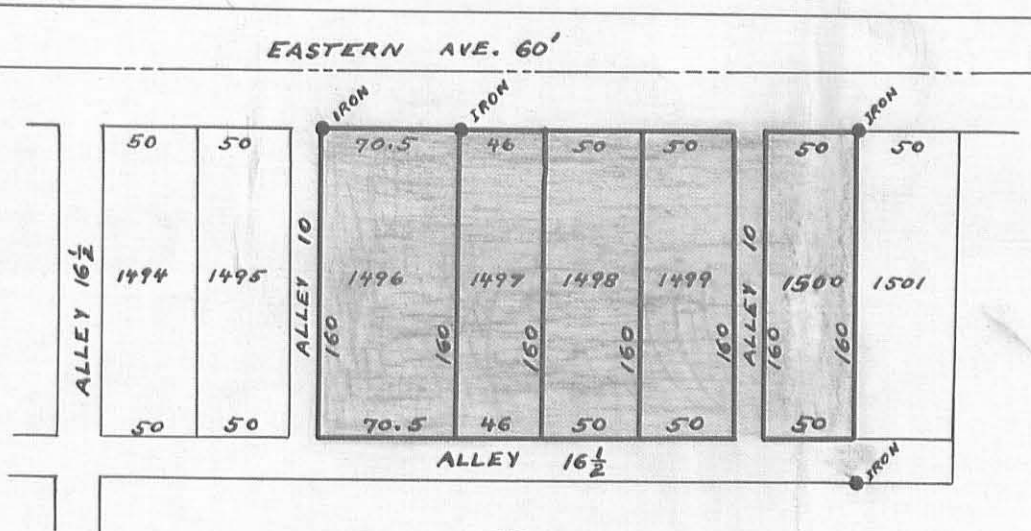
SURVEY NOTES IN SURVEYOR'S BOOK 419 PAGE 7
 LOTS 1501, 1495 AND 1494 ARE SHOWN BUT
 WERE NOT SURVEYED.
 ALL LOT CORNERS HAVE WOODEN STAKE
 EXCEPT WHERE IRONS WERE PLACED
 AS SHOWN.
 LOTS 1500, 1499 AND 1498 SAME AS ORIGINAL
 SURVEY.
 SURVEYED JUNE 1, 1927

J. F. Knight C.E.

912 2P

INDEXED ON MAP
 LYNN SURVEY
 EASTERN AVE.
 BELLEFONTAINE

1927



SURVEY NOTES IN SURVEYOR'S
 BOOK 419 PAGE 7.
 SURVEYED JUNE 1, 1927
 F. F. Knight C.E.

RECEIVED FOR RECORD JUN 15 1927

RECORDED _____ 1927

PLAT BOOK A PAGE 25

 CO. RECORDER
 Sam Carter

(912) 3P

INDEXED ON MAP.

LYNN SURVEY
 EASTERN AVE.
 BELLEFONTAINE
 1927

CK. 2-16-03

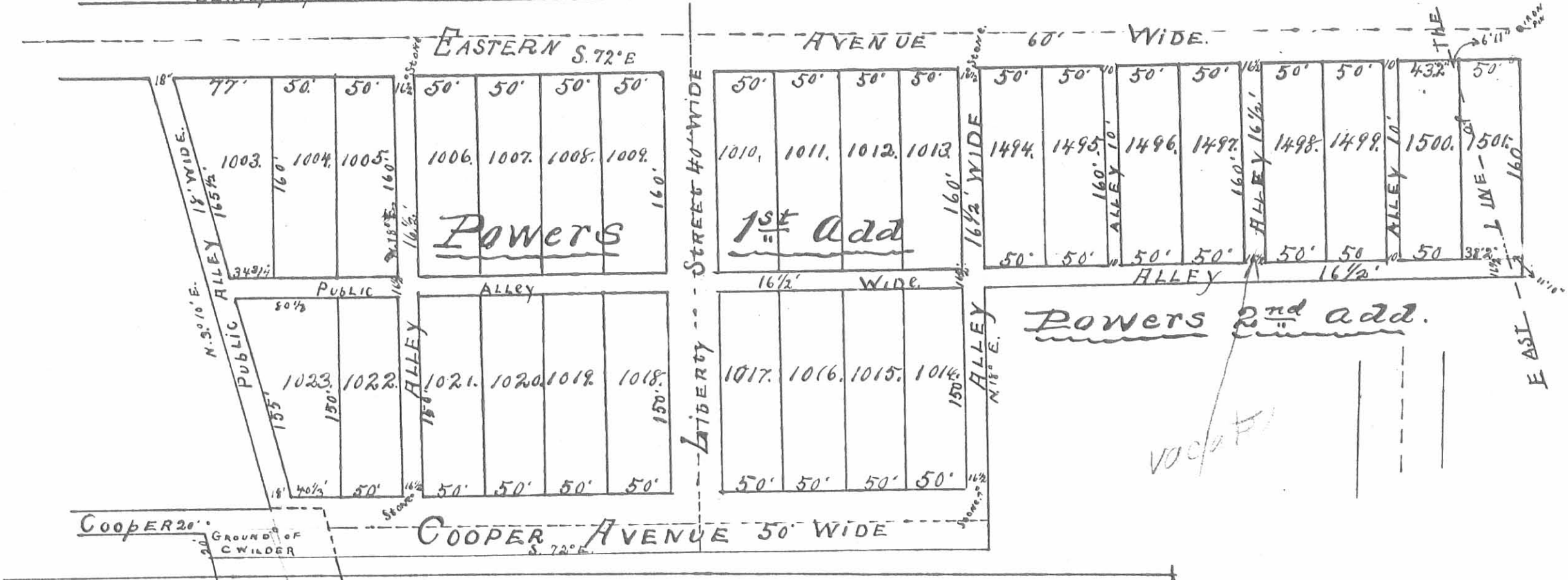
Surveyed by H.C. Moore.

Surveyed April 13, 1876 POWERS 1st and 2nd Add.

CK. 2-16-03

S 70 1/2° E. Surveyed Oct. 8, 1891

GOBPOBADI



INDEXED ON MAP
912 4P