

LESLIE H. GEESLIN

REGISTERED SURVEYOR 5248

P. O. BOX 274

RUSHSVLVANIA, OHIO 43347

TELEPHONE: (513) 468-2793

BRANHAM SURVEY

July 3, 1996

The following described real estate situated in the State of Ohio, County of Logan, Township of Lake, being part of the City of Bellefontaine, and more particularly described as follows: IN S. 35, T. 4, R. 14

Beginning at a point in the centerline of Columbus Street at the southwest corner of Ronald Irick, etal's 0.21 acre tract as described in O. R. Vol. 108 Page 550.

Thence with the centerline of said Columbus St. N. 76° 25' 12" W. 68.39 feet to a point at the southeast corner of Frank Slemmons' 0.21 acre tract as described in O. R. Vol. 195 page 212.

Thence with said Slemmons' east line N. 14° 04' 16" E. 28.95 feet to a point.

Thence again with said Slemmons' east line S. 76° 25' 12" E. 6.00 feet to a point.

Thence again with said Slemmons' east line N. 14° 04' 16" E. 101.00 feet to a 3/4 inch iron pipe found, passing a 3/4 inch iron pipe found in the north right of way line of said Columbus St. at 1.05 feet.

Thence again with said Slemmons' east line N. 78° 59' 21" W. 6.19 feet to a 3/4 inch iron pipe found.

Thence again with said Slemmons' east line N. 14° 35' 19" E. 78.84 feet to a 5/8 inch iron bar found in the south line of LeRoy Jauret, etux's original 1.886 acre tract as described in O. R. Vol. 78 Page 425.

Thence with said Jauret's south line S. 49° 13' 17" E. 73.90 feet to a 5/8 inch iron bar found in said Irick's west line.

Thence with said Irick's west line S. 13° 28' 04" W. 174.72 feet to the place of beginning, passing a 5/8 inch iron bar set at 144.72 feet.

Containing 0.282 acres more or less of which 0.046 acre is in the right of way of Columbus Street.

The above described 0.282 acre tract being all of Ronald Branham's 0.30 acre tract as described in O. R. Vol. 15 Page 775.

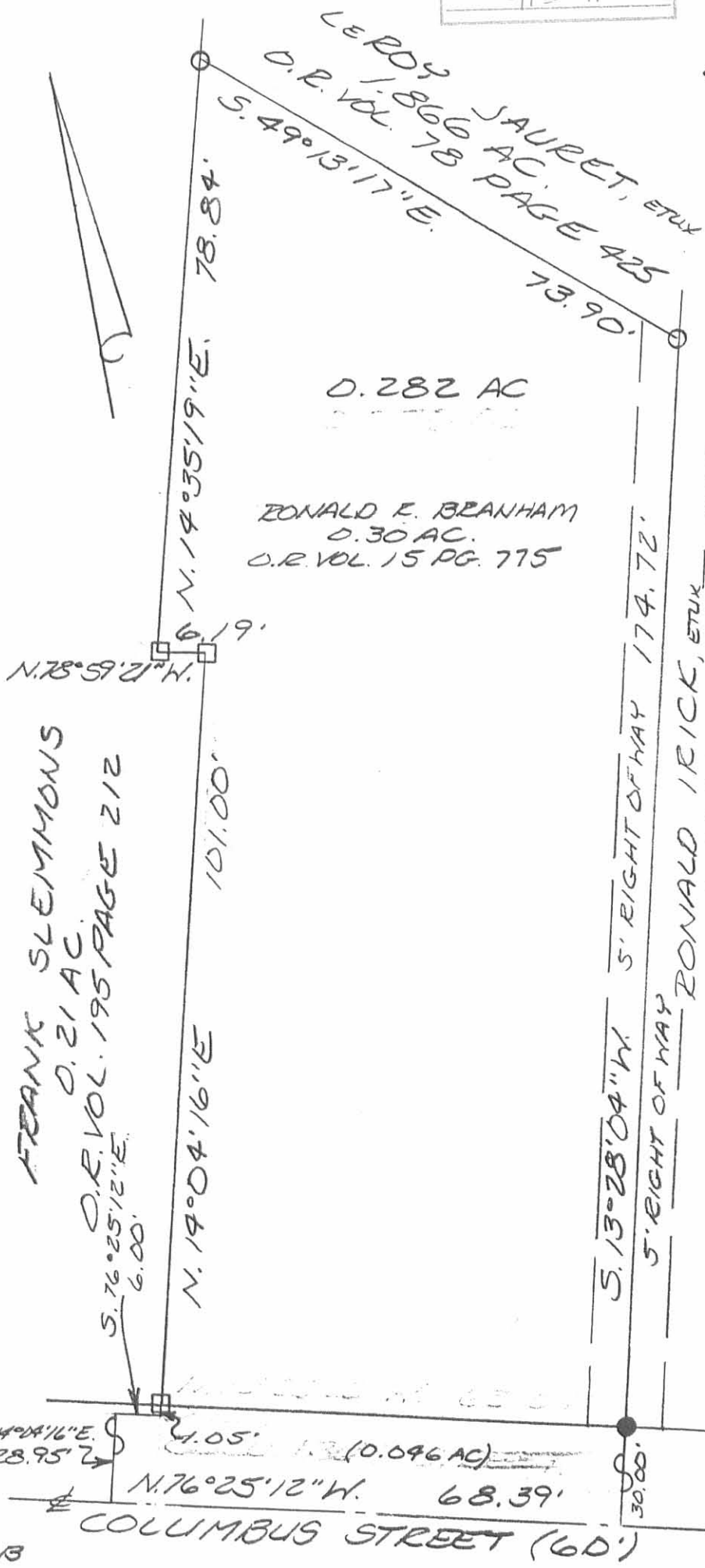
Bearings are based on an assumed bearing (N. 76° 25' 12" W.) for the centerline of Columbus Street in this field survey by Leslie H. Geeslin, Reg. Surveyor 5248 on July 15, 1996.



Leslie H. Geeslin

INDEXED ON MAP
913 1P

SCALE: 1" = 20'



LEROY JAURET, ETUX
1.866 AC.
O.R. VOL. 78 PAGE 425
S. 49° 13' 17" E.
78.84'
73.90'

0.282 AC

RONALD F. BRANHAM
0.30 AC.
O.R. VOL. 15 PG. 775

FRANK SLEMMONS
0.21 AC.
O.R. VOL. 195 PAGE 212
S. 76° 25' 12" E.
6.00'

N. 12° 55' 21" W.
6.19'

101.00'

N. 14° 04' 16" E

S. 13° 28' 04" W. 5' RIGHT OF WAY 174.72'

5' RIGHT OF WAY RONALD IRICK, ETUX
0.21 AC.
O.R. VOL. 108 PG. 550

- LEGEND:
- = 5/8 INCH IRON BAR FOUND
 - = 3/4 INCH IRON PIPE FOUND
 - = 5/8 INCH IRON BAR SET

SURVEY OF 0.236 ACRE
IN THE CITY OF BELLEFONTAINE,
LAKE TOWNSHIP, LOGAN
COUNTY, OHIO FOR
RONALD BRANHAM ON
JULY 2, 1996
SEC. 35 TOWN 4 RANGE 14

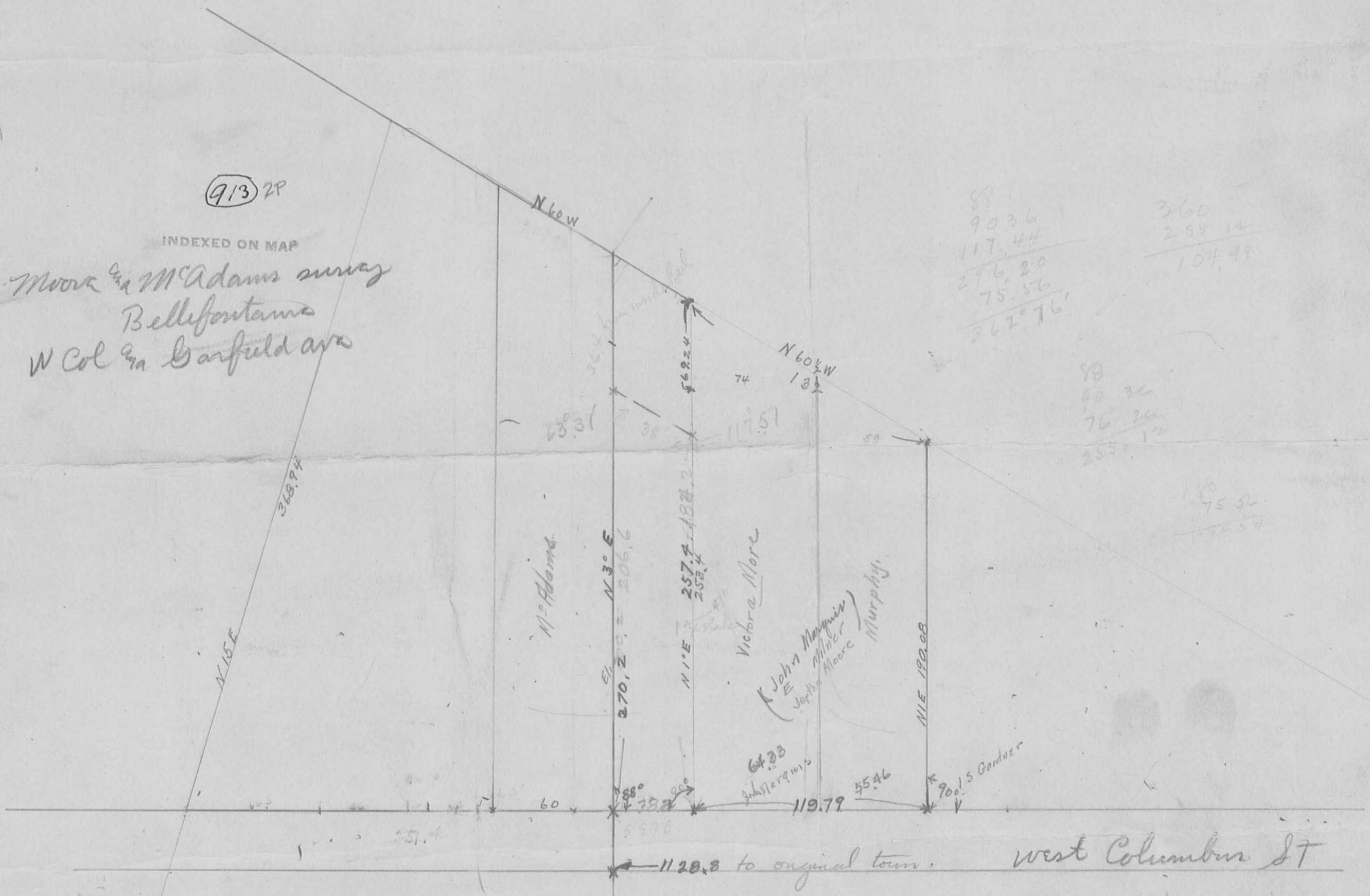


Leslie H. Geeslin
LESLIE H. GEESLIN
EUSHASTLVANIA, O
(513) 468-2793

913 2P

INDEXED ON MAP

Moore & McAdams survey
Bellifontaine
W Col & Garfield ave



measured 59 feet from state at alley.

66.8
55
65.8
63
59.0

165
98.4
66.6