

Jo Haughen Survey

Mad River and Chillicothe Mon.

Main + Chillicothe — intersection by
lines from brass across in cut

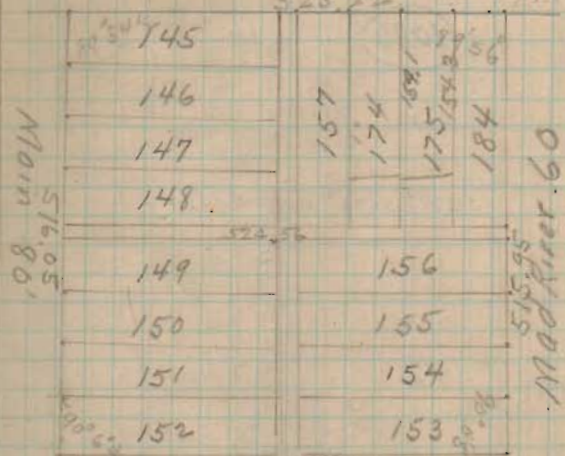
Auburn and Mad River stone 1867
 Hyd SE 37.3 Wend iron inlet NE 327
 S end iron inlet NW 32.3 Center N H top 3.2

Auburn + Main Mon.

Distances	Plot	Mass	
	526.5	523.64	Main to Mad River on Auburn
	526.5	526.14	Chil. to Auburn on Main
	526.5	525.15	Main to Mad R on Chil
	516.5	(515.90) (515.45)	Chil. to Auburn on Mad River

 MO Entertine T
 WA Montgomery
 WM Smuckard
BELLEFONTAINE¹⁴¹

Chillicothe 60'



total	525.22	526.50	=	1.28
	522.56	526.50		1.24
	24.24			
	139.43			
	197.52			

1086

INDEXED ON MAP

2.15
 1.28
 1.24
 1.28
 1.24

97

Lots 174 + 175

(1086)

54.84' 54.84' 27.00' 27.00' 54.84'



Bar's

10'