

conklin

Lots 1221 and 1222
Linden St. Bellefontaine

- A. Monument with cover
- B Iron Pipe Found.
- C " " "
- D Iron Pipe Placed.
- E " " " } Placed at edge
- F " " " } of sidewalk.
- G " " " } See Page 72
- H. Iron Pipe Placed } East lot
- I " " " } line 200'
- J " " " } from E of
- K. " " " } Linden

B to C 476 1/2 O.K. with Plat.
Set on B Turned 90° C to K
Placed Irons as shown.

See Book 597 Page 58-59

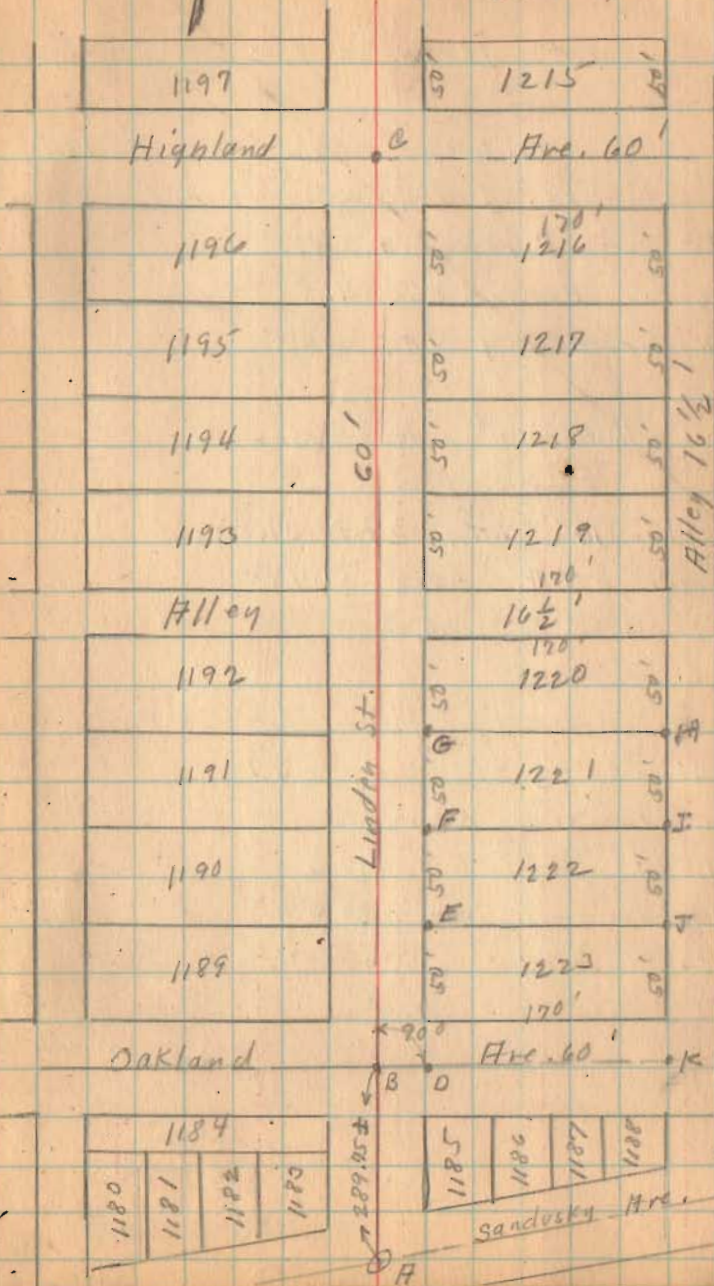
1424

INDEXED ON MAP

W. | E.
|
↓

Nov. 11-1932
snow - Windy
Wright
Bill Wright

71



1180
1181
1182
1183

1185
1186
1187
1188

Sandusky Ave.

Lots 1221 and 1222 (Continued)

Witnesses from City Building

Linden and Oakland I.P.M.

N.E. cor. f res S.W. 52.8

N.W. cor. Barn S.E. 41.5

S.W. Cor. Grocery N.E. 53.5

Linden and Harrison

Iron Pin

Poplar 10" N.W. 29.8 31.85

Cherry N.W. 60.5 51.45

Elm 1" S.E. 36.3

Linden and Highland I.P.M.

N.W. Cor. 1/2 S.E. S.E. 64.1

El. Lt. stub S.E. 20.6

El. Lt. Pole S.E. 37.6

El. Lt. Pole N.E. 23.0

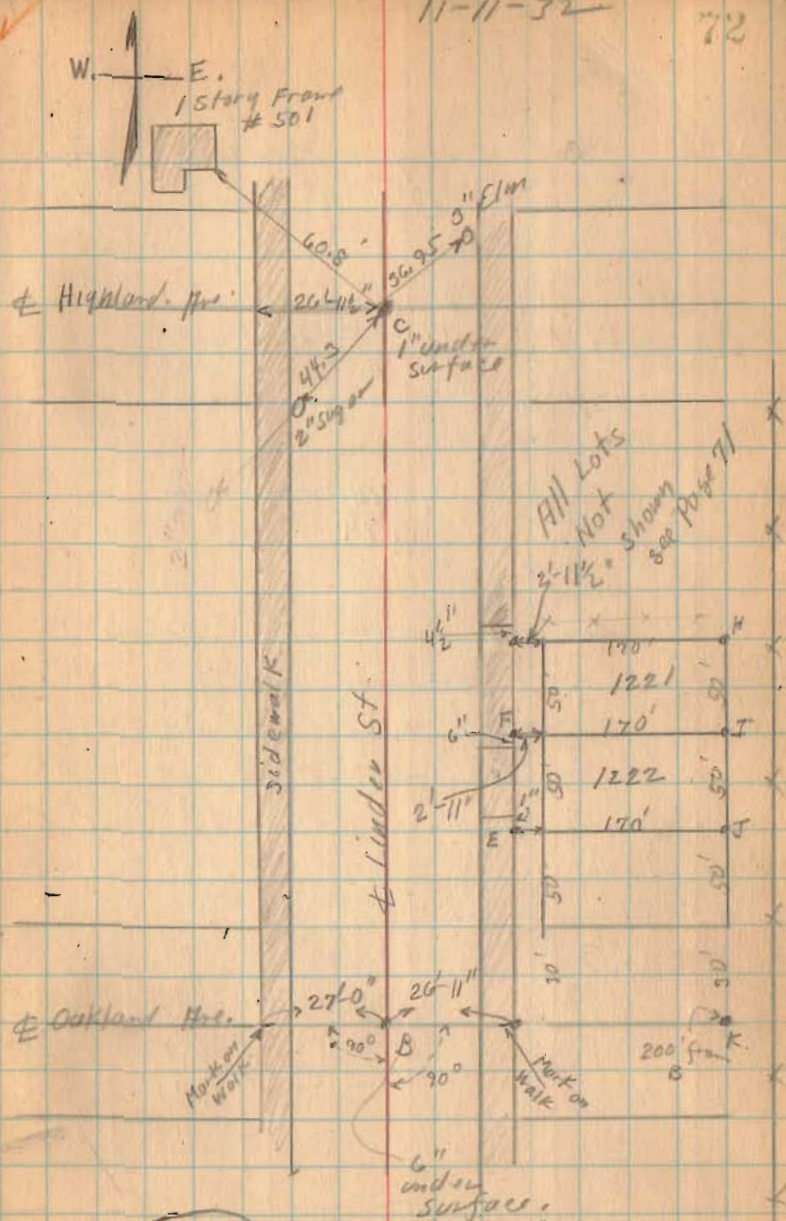
Stub 28.1

T-1 Pole N.W. 26.8

FOR LOT 1213 see BOOK 597 Page 28

11-11-32

72



INDEXED ON MAP