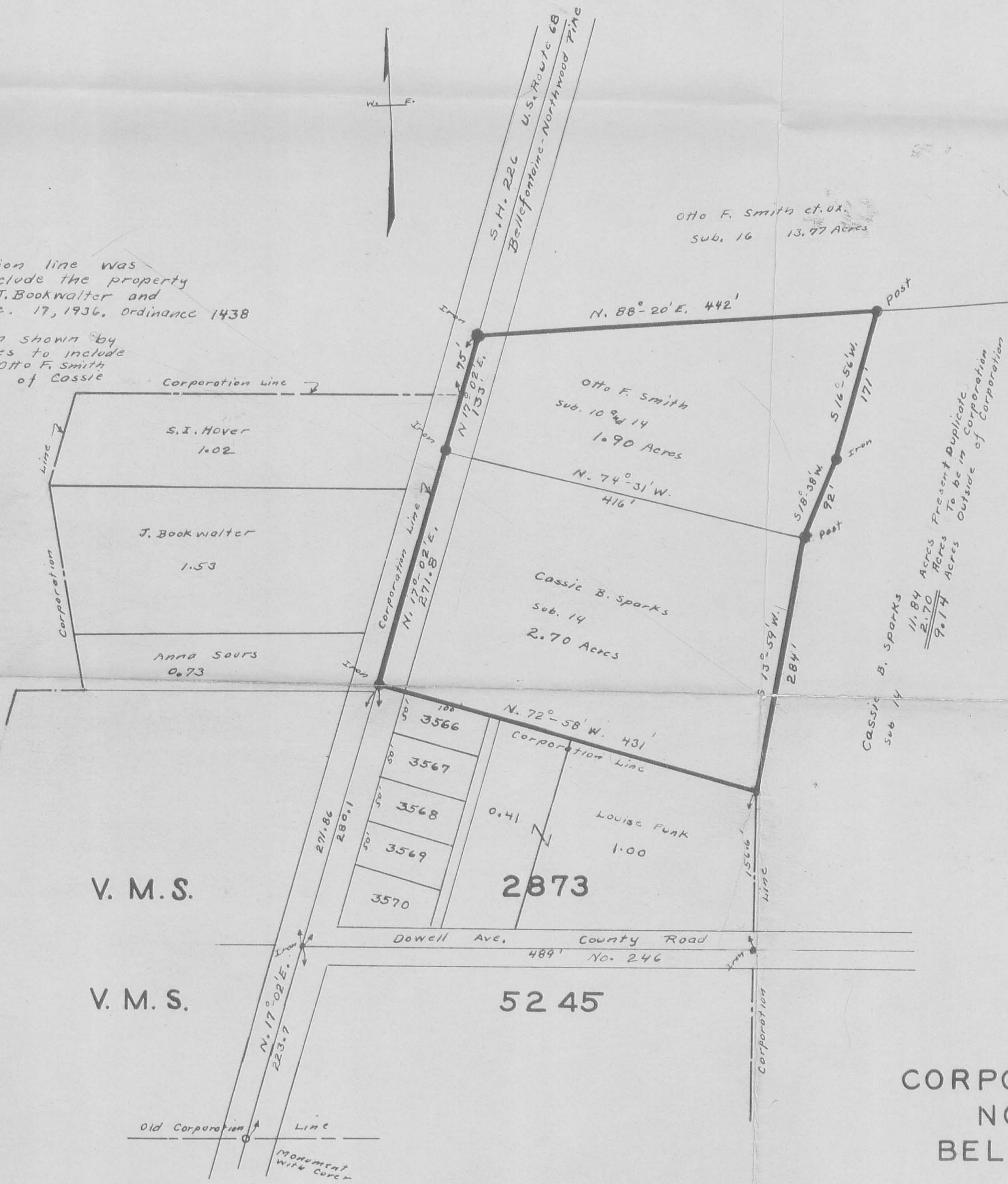


**Note:-**

The corporation line was extended to include the property of S.I. Hoover, J. Bookwalter and Anna Sours Dec. 17, 1936, Ordinance 1438

This extension shown by heavy black lines to include 1.90 Acres of Otto F. Smith and 2.70 Acres of Cassie B. Sparks, Ordinance 1586 June 13, 1938



**CORPORATION LINE EXTENSION  
NORTH MAIN STREET  
BELLEFONTAINE OHIO  
1938**

LAKE TOWNSHIP LOGAN COUNTY

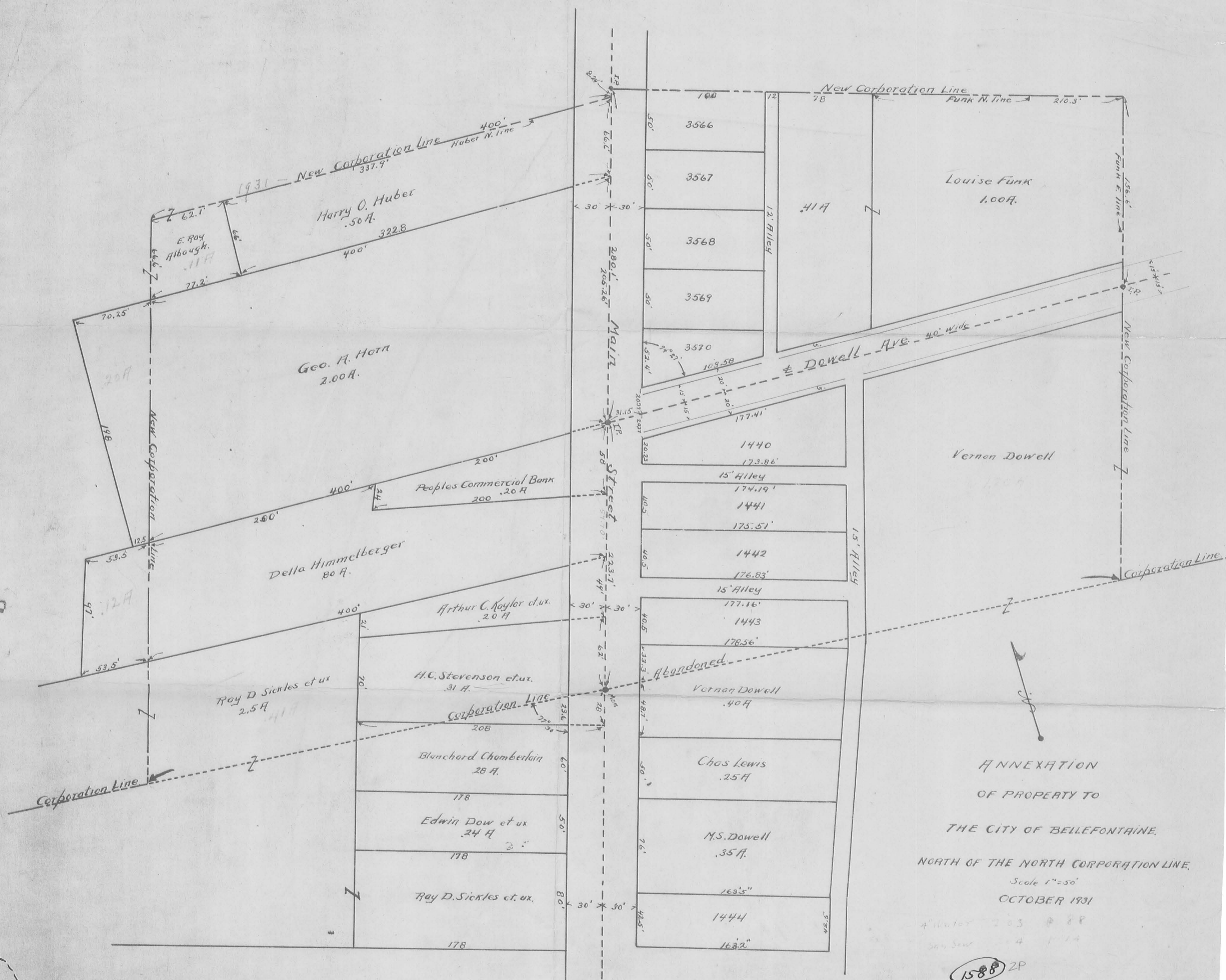
1" = 100'

INDEXED ON MAP

1588 IP

Survey Notes  
Book 204





ANNEXATION  
 OF PROPERTY TO  
 THE CITY OF BELLEFONTAINE,  
 NORTH OF THE NORTH CORPORATION LINE,  
 Scale 1"=50'  
 OCTOBER 1931

4' Auditor 203 88  
 Jan 30 1934

1588 ZP  
 INDEXED ON MAP  
 (Lake Township)

C-68  
 City File  
 Number