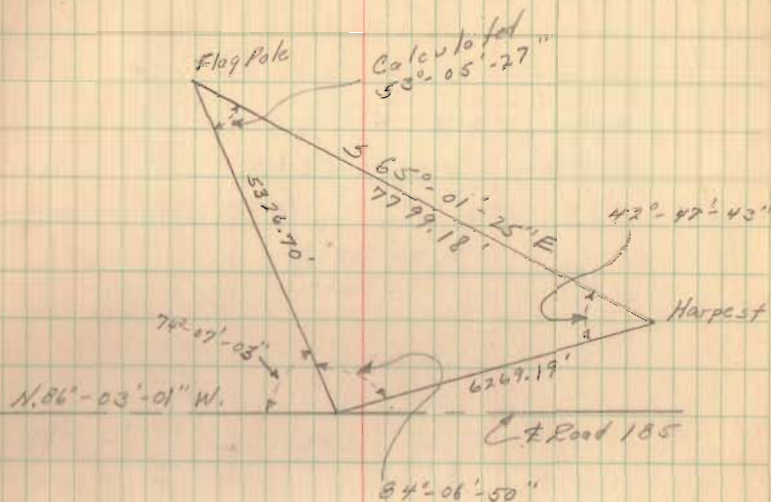


Armory Survey

Field angles to determine Bearing
(see Page 55)

①	②	③
Wilgus	Wilgus	Wilgus
74°-07'-00"	84°-06'-40"	42°-47'-00"
148°-14'-00"	168°-13'-20"	85°-35'-40"
222°-21'-00"	252°-20'-00"	128°-23'-20"
296°-28'-20"	336°-27'-20"	171°-11'-00"
370°-35'-20"	420°-34'-00"	213°-58'-40"
444°-42'-20"	504°-40'-40"	256°-46'-20"
<u>74°-07'-03"</u> ← USE	<u>84°-06'-47"</u>	<u>42°-47'-43"</u> ← USE

Core	Core	Core
74°-07'-00"	84°-06'-40"	42°-47'-00"
148°-14'-00"	168°-13'-40"	85°-35'-20"
222°-20'-40"	252°-20'-20"	128°-23'-20"
296°-27'-40"	336°-27'-20"	171°-09'-40"
370°-34'-20"	420°-34'-00"	213°-57'-20"
444°-41'-20"	504°-41'-00"	256°-45'-00"
<u>74°-06'-53"</u>	<u>84°-06'-50"</u> ← USE	<u>42°-47'-20"</u>



1828

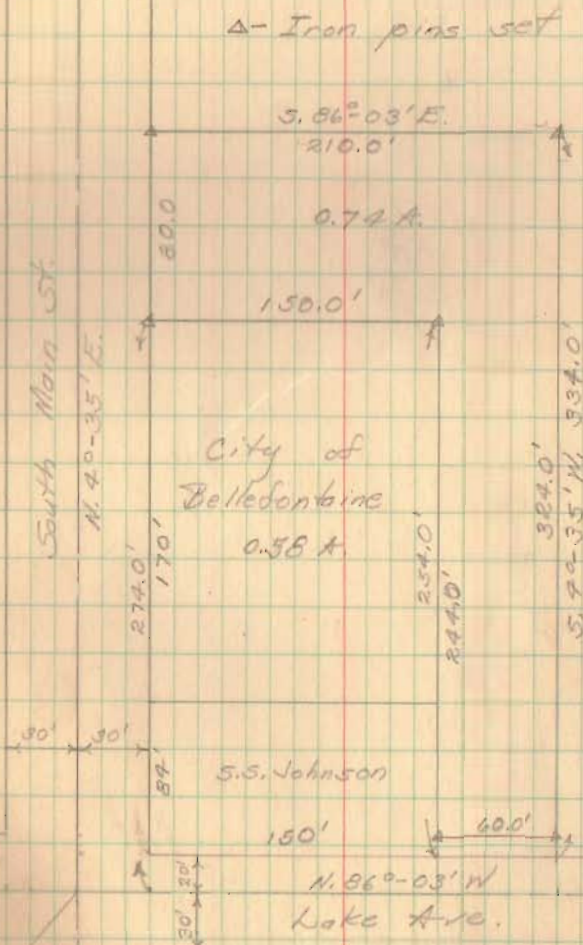
INDEXED ON MAP

Survey of Armory Site
at Fairgrounds

Mar. 1948

C. Keyson
D. Dodson

36



Carlisle
Ave.

1828

INDEXED ON MAR