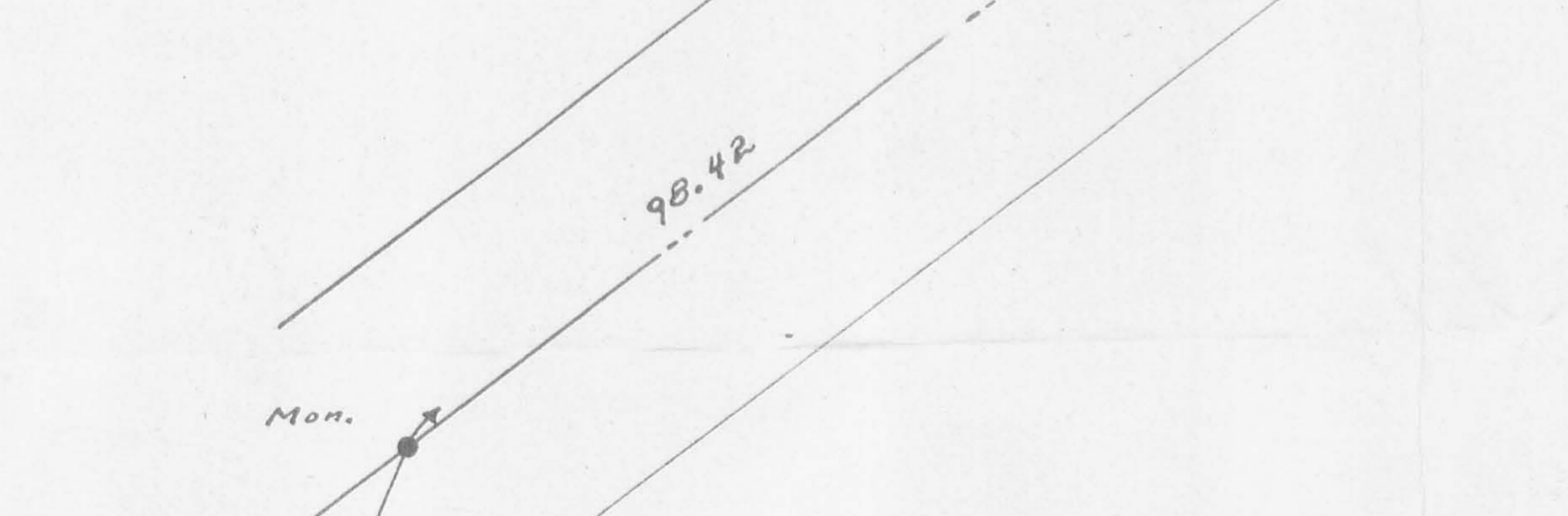
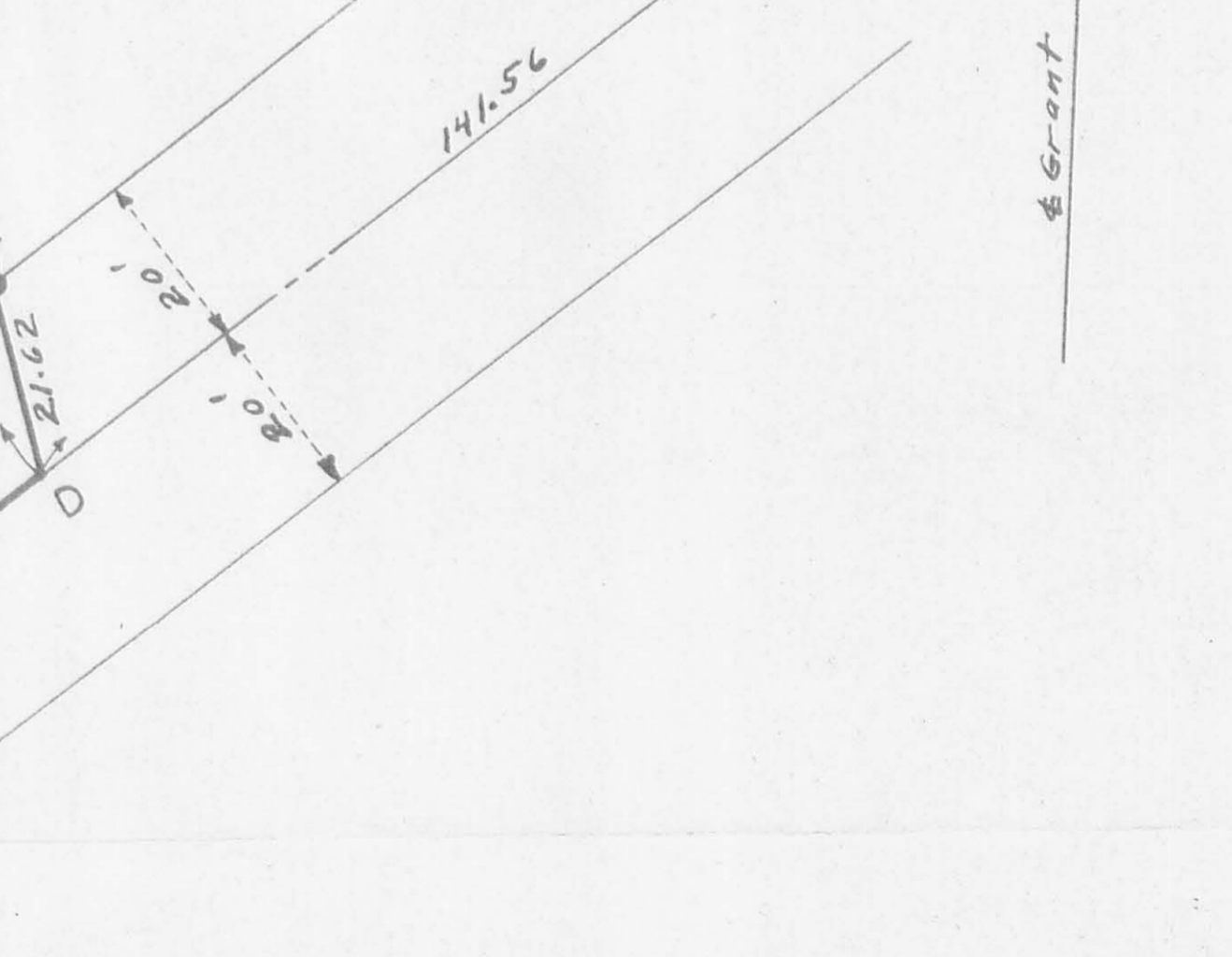
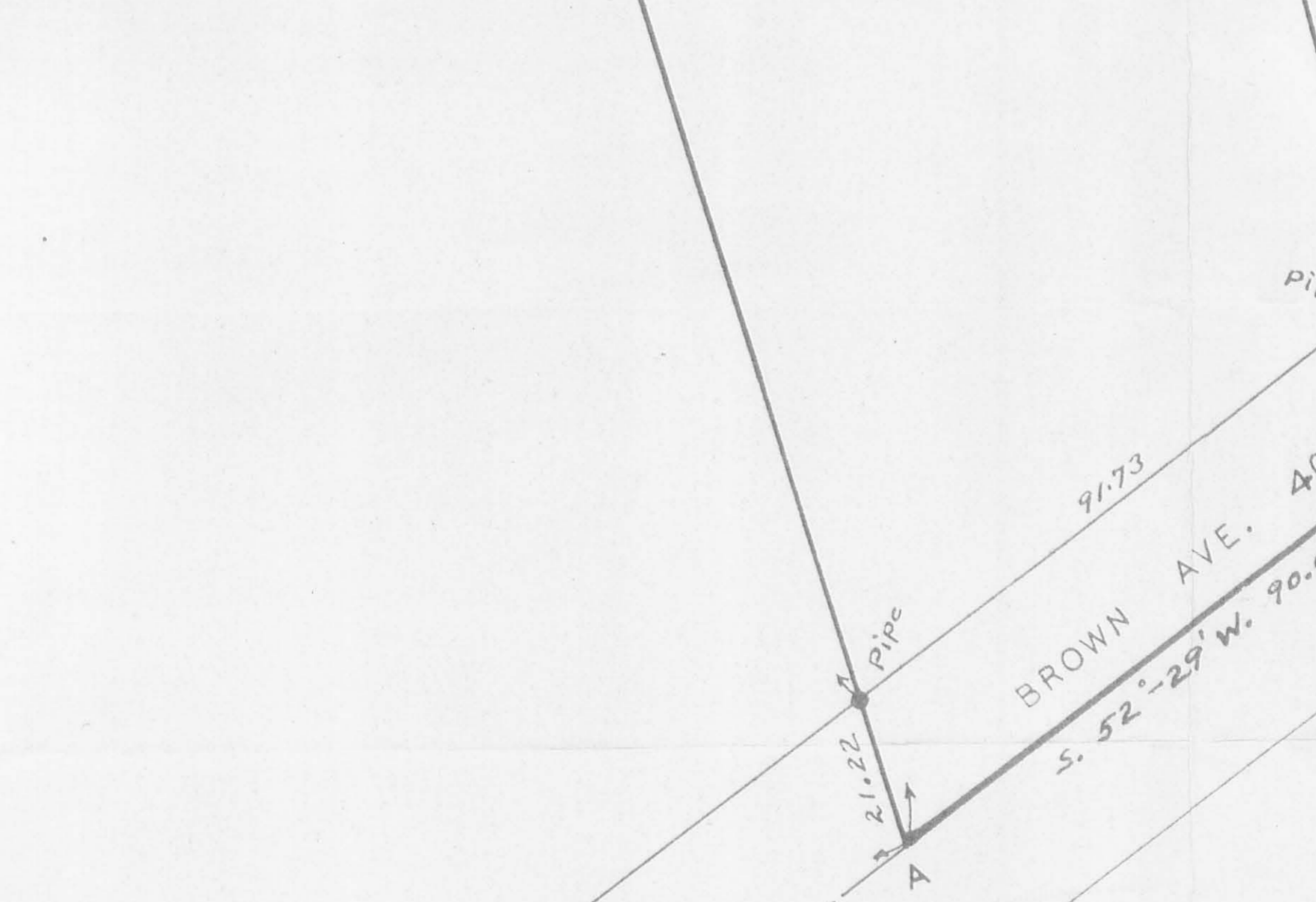


Glenn Lochr
 ABCD = 0.70 Acre.
 Sub. 352

Ferguson



LOEHR SURVEY
 BROWN & HIGH AVE.
 BELLEFONTAINE OHIO
 V.M.S. 4990
 FEB. 1942 1" = 20'
 F.F. WRIGHT

1857 IP
 INDEXED ON MAP



City Book 234 Page 15 To 18

City INDEXED 519



Lee Surveying and Mapping Co.



Farm Surveys • Lot Surveys • Topography • Subdivisions • Construction Layout

143 EAST COLUMBUS AVENUE
BELLEFONTAINE, OHIO 43311

(513) 593-7335
(513) 593-5780

CLAYTON M. LEE, P.S.
JEFFREY I. LEE, P.S.

TAPP (0.268 ACRES) TRACT 'A'

Lying in the City of Bellefontaine, V.M.S. 4990. Lake Township, Logan County, Ohio.

Being a part of the 0.70 acres in the name of Tapp as deeded and described in Volume 335, Page 774 of the Logan County Records of Deeds and being more particularly described as follows:

Beginning at a 'PK' spike found on the center-line of East High Street marking the northeast corner of the said 0.70 acre tract and also being the northwest corner of the Audra Shaw 0.25 acre tract (Volume 375, Page 915).

THENCE, with the line between the said Tapp 0.70 acres and the Shaw 0.25 acre tract, S 15°-12'-20" E, a distance of 113.88 feet to a 5/8" iron rod (set), passing through a 5/8" iron rod found on the south line of High Street at 25.03 feet.

THENCE, S 83°-21'-00" W, a distance of 97.07 feet to a railroad spike set on the west line of said 0.70 acre tract.

THENCE, with said west line, N 18°-05'-32" W, a distance of 104.11 feet to a 'PK' spike set on the center-line of East High Street, passing through a 5/8" iron rod found at 79.00 feet.

THENCE, with the center-line of High Street, N 77°-22'-00" E, a distance of 101.33 feet to the point of beginning.

Containing 0.246 acre, of which 0.058 acre is located within High Street, leaving 0.188 acre clear of the street.

This description prepared from an actual field survey.

Basis for bearings: Center-line of High Street= N 77°-22'-00" E. (From city survey records).

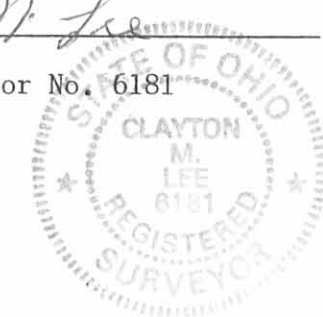
Prepared by:

Clayton M. Lee

Clayton M. Lee

Registered Surveyor No. 6181

June 6, 1990



ORIGINAL STATE OF OHIO

L-643

INDEXED ON MAP
1857 2D-1



Lee Surveying and Mapping Co.



Farm Surveys • Lot Surveys • Topography • Subdivisions • Construction Layout

143 EAST COLUMBUS AVENUE
BELLEFONTAINE, OHIO 43311

(513) 593-7335
(513) 593-5780

CLAYTON M. LEE, P.S.
JEFFREY I. LEE, P.S.

TAPP (0.183 ACRE) TRACT 'B'

Lying in the city of Bellefontaine, V.M.S. 4990, Lake Township, Logan County, Ohio.

Being a part of that 0.70 acres in the name of Tapp as deeded and described in Volume 335, Page 774 of the Logan County Records of Deeds and being more particularly described as follows:

Beginning at a 'PK' spike found on the center-line of East High Street marking the northeast corner of the said 0.70 acre tract and also being the northwest corner of the Audra Shaw 0.25 acre tract (Volume 375, Page 915).

THENCE, with the line between the said Tapp 0.70 acres and the Shaw 0.25 acre tract, S 15°-12'-20" E, a distance of 113.88 feet to a 5/8" iron rod (set), passing through a 5/8" iron rod found on the south line of High Street at 25.03 feet. THE TRUE POINT OF BEGINNING.

THENCE, continuing with the said line between Tapp and Shaw, S 15°-12'-20" E, a distance of 80.03 feet to a 5/8" iron rod (set).

THENCE, S 77°-36'-00" W, a distance of 91.56 feet to a 5/8" iron rod set on the west line of the said Tapp 0.70 acre tract.

THENCE, with said west line, N 18°-05'-32" W, a distance of 90.11 feet to a railroad spike set at the southwest corner of a 0.246 acre tract (previously surveyed, not yet recorded).

THENCE, with the south line of the said 0.246 acre tract, N 83°-21'-00" E, a distance of 97.07 feet to the point of beginning.

Containing 0.183 acre.

This description prepared from an actual field survey.
Basis for bearings: Center-line of High Street = N 77°-22'-00" E. (From city survey records).

Prepared by:

Clayton M. Lee
Registered Surveyor No. 6181
June 6, 1990



L-643

INDEXED ON MAP
1857 2D-2

ORIGINAL STAMP IN GREEN



Lee Surveying and Mapping Co.



Farm Surveys • Lot Surveys • Topography • Subdivisions • Construction Layout

143 EAST COLUMBUS AVENUE
BELLEFONTAINE, OHIO 43311

(513) 593-7335
(513) 593-5780

CLAYTON M. LEE, P.S.
JEFFREY I. LEE, P.S.

TAPP (0.268 ACRE) TRACT 'C'

Lying in the City of Bellefontaine, V.M.S. 4990, Lake Township, Logan County, Ohio.

Being a part of that 0.70 acres in the name of Tapp as deeded and described in Volume 335, Page 774 of the Logan County Records of Deeds and being more particularly described as follows:

Beginning at a 'PK' spike set on the center-line of East Brown Street, S 52°-29'-00" W, 141.48 feet from the center-line of Grant Street, marking the southeast corner of the said Tapp 0.70 acre tract.

THENCE, continuing with the center-line of Brown Street, S 52°-29'-00" W, a distance of 90.55 feet to a 'PK' spike set at the southwest corner of said 0.70 acre tract.

THENCE, with the west line of said 0.70 acre tract, N 18°-05'-32" W, a distance of 152.42 feet to a 5/8" iron rod (set), passing through a 5/8" iron rod set on the north line of Brown Street at 21.14 feet.

THENCE, N 77°-36'-00" E, a distance of 91.56 feet to a 5/8" iron rod set on the east line of said 0.70 acre tract.

THENCE, with said east line, S 15°-12'-20" E, a distance of 113.37 feet to the point of beginning, passing through a 5/8" iron rod set at 92.13 feet.

Containing 0.268 acre, of which 0.042 acre is within Brown Street, leaving 0.226 acre clear of the street.

This description prepared from an actual field survey.

Basis for bearings: Center-line Brown Street = S 52°-29'-00" W. (From city survey records).

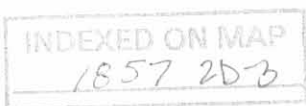
Prepared by:

Clayton M. Lee
Clayton M. Lee
Registered Surveyor No. 6181
June 6, 1990

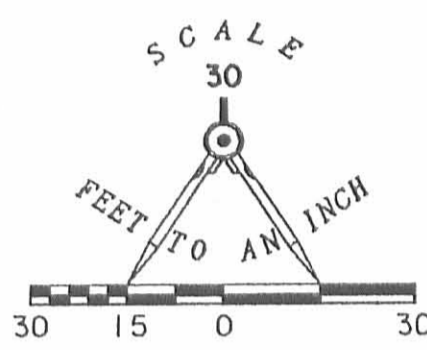
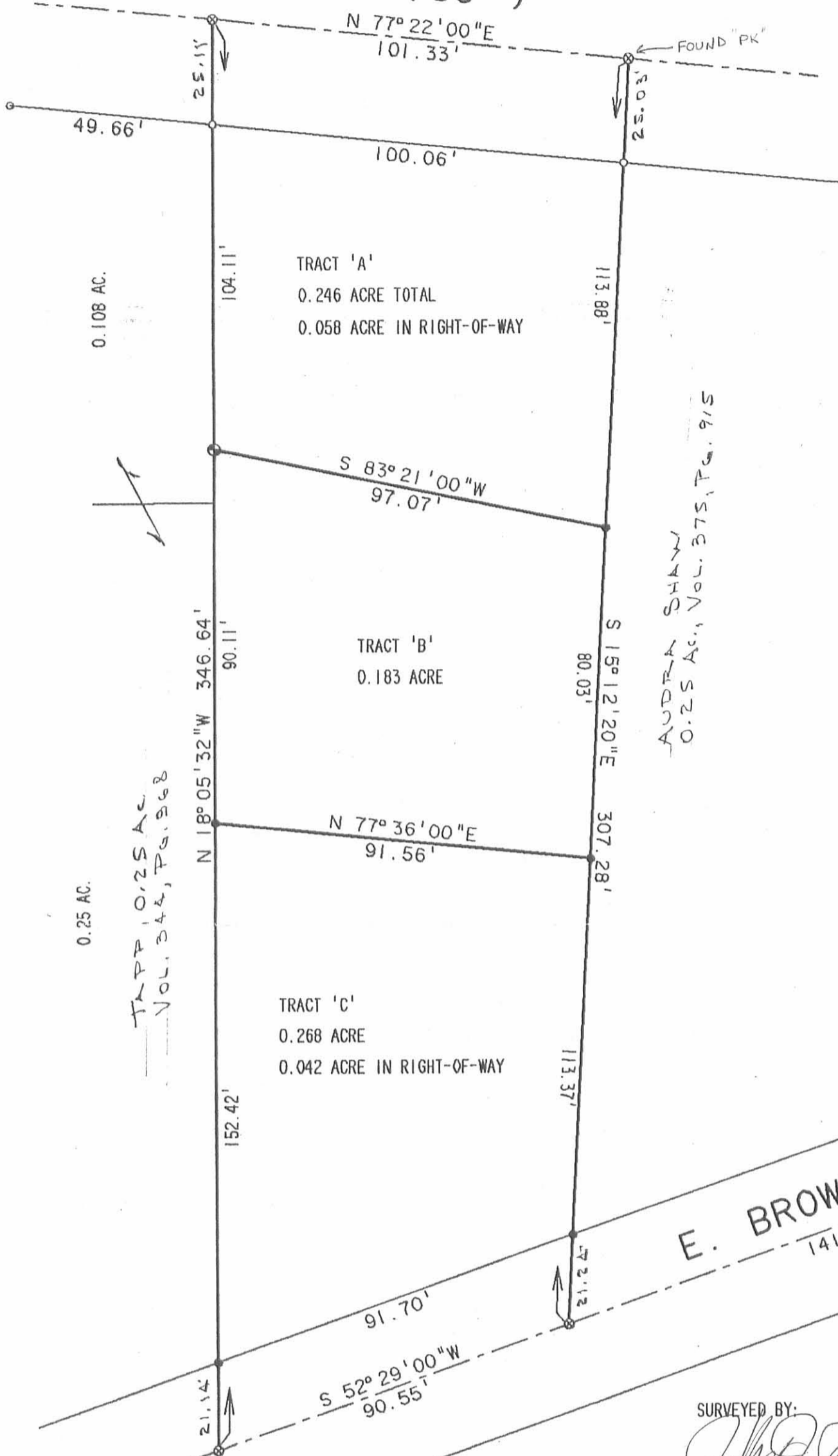


ORIGINAL STAMP IN GREEN

L-643



E. HIGH AVE. (50')



- LEGEND
- 3/4" I. ROD FOUND
 - ◊ 5/8" I. ROD FOUND
 - 5/8" I. ROD SET
 - ⊗ PK SPIKE SET
 - ⊙ RAILROAD SPIKE SET

SURVEYED BY:
Jeffrey J. Lee
JEFFREY J. LEE
PROFESSIONAL SURVEYOR NO. 6359
JUNE 5, 1990



ORIGINAL STATE OF OHIO

INDEXED ON MAP
1897 2p

SURVEY OF 3 TRACTS OUT OF 0.70 ACRES

VOL. 335, PG. 774

V.M.S. 4990, CITY OF BELLEFONTAINE
LAKE TOWNSHIP, LOGAN COUNTY, OHIO

LEE SURVEYING & MAPPING CO.
143 East Columbus Avenue
BELLEFONTAINE, OHIO 43311
(513) 593-7335



Lee Surveying and Mapping Co.



Farm Surveys • Lot Surveys • Topography • Subdivisions • Construction Layout

143 EAST COLUMBUS AVENUE
BELLEFONTAINE, OHIO 43311

(513) 593-7335
(513) 593-5780

CLAYTON M. LEE, P.S.
JEFFREY I. LEE, P.S.

TAPP APARTMENTS
PARKING LOT

Lying in the City of Bellefontaine, Lake Township, Logan County, Ohio (S.M.S. 4990) being the north part of that 0.25 acre tract deeded and described in Volume 344, Page 968 of the Logan County Records of Deeds and being more particularly described as follows:

Beginning at a 'PK' set in the center-line of East High Avenue marking the northeast corner of this tract and the northwest corner of a 0.70 acre tract (Volume 335, Page 774).

THENCE, with the west line of the said 0.70 acre tract, S 18°-05'-32" E, a distance of 117.11 feet to a 5/8" iron rod (set).

THENCE, S 71°-54'-28" W, a distance of 48.21 feet to a 5/8" iron rod set on the west line of said 0.25 acre tract.

THENCE, with said west line, N 18°-49'-00" W, a distance of 121.82 feet to a 'PK' set on the center-line of East High Avenue.

THENCE, with said center-line, N 77°-22'-00" E, a distance of 49.57 feet to the point of beginning.

Containing 5922 square feet (0.134 acre).

This description prepared from an actual field survey.

Basis for bearings: Center-line East High Street = N 77°-22'-00" E.

Refer: Past survey of property to the east.

Prepared by:

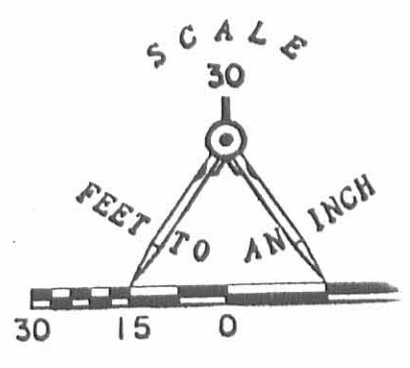
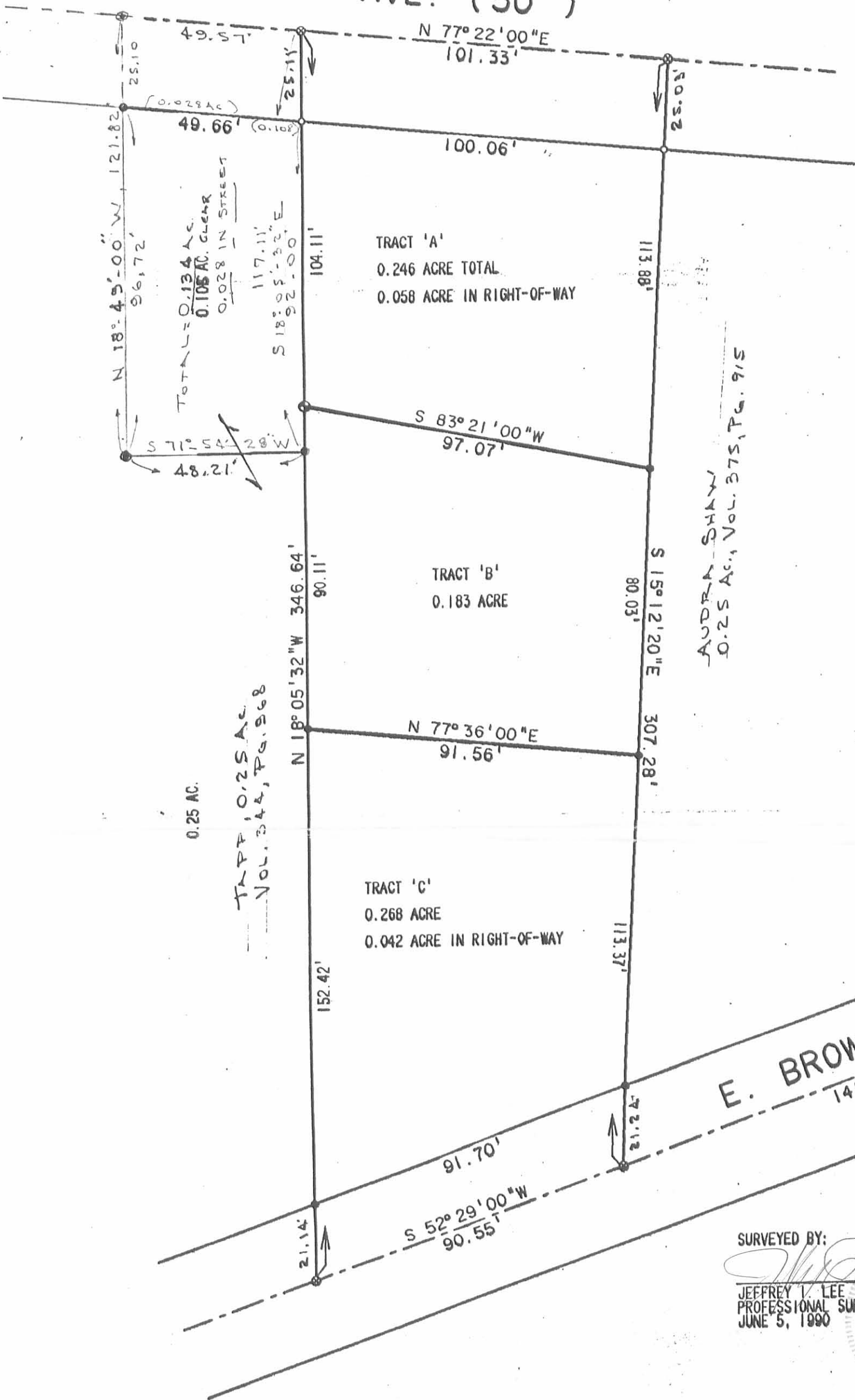
Clayton M. Lee
Clayton M. Lee
Registered Surveyor No. 6181
June 18, 1990



ORIGINAL STAMP IN GREEN

INDEXED ON MAP
1857 3D

E. HIGH AVE. (50')



- LEGEND**
- 3/4" I. ROD FOUND
 - 5/8" I. ROD FOUND
 - 5/8" I. ROD SET
 - ⊙ PK SPIKE SET
 - ⊕ RAILROAD SPIKE SET

AUDRA SHAW
0.25 AC., Vol. 375, Pg. 915

TRAP, 0.25 AC.
Vol. 344, Pg. 968

E. BROWN AVE. (40')

GRANT STREET

SURVEYED BY:
Jeffrey V. Lee
JEFFREY V. LEE
PROFESSIONAL SURVEYOR NO. 6359
JUNE 5, 1990

ORIGINAL STAMP IN GREEN

SURVEY OF 3 TRACTS OUT OF 0.70 ACRES

+ PARKING LOT
OUT OF 0.25 AC.
Vol. 344, Pg. 968

VOL. 335, PG. 774

V.M.S. 4990, CITY OF BELLEFONTAINE

LAKE TOWNSHIP, LOGAN COUNTY, OHIO

LEE SURVEYING & MAI
143 East Columbus A
BELLEFONTAINE, OHIO
(513) 593-7335

INDEXED ON MAP
18573P

Lee Surveying and Mapping Co.



Farm Surveys • Lot Surveys • Topography • Subdivisions • Construction Layout

855 EAST SANDUSKY AVENUE
BELLEFONTAINE, OHIO 43311

(613) 593-5780

CLAYTON M. LEE, P.S.
JEFFREY I. LEE, P.S.

TAPP APARTMENTS

TRACT 'A' (NORTH BUILDING)

Lying in the City of Bellefontaine, Lake Township, Logan County, Ohio and being a part of that 0.70 acre tract deeded and described in Volume 335, Page 774 of the Logan County Records of Deeds and more particularly described as follows:

Beginning at a point in the center-line of East High Avenue marking the northeast corner of said 0.70 acre tract.

THENCE, with the east line of said 0.70 acre tract, S 15°-06'-20" E, a distance of 25.02 feet to an iron pipe found on the south line of East High Avenue. THE TRUE POINT OF BEGINNING.

THENCE, continuing with said east line, S 15°-06'-20" E, a distance of 78.90 feet to a point.

THENCE, S 77°-28' W, a distance of 96.07 feet to a point in the west line of said 0.70 acre tract.

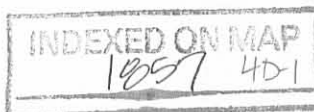
THENCE, with said west line, N 18°-00' W, a distance of 79.00 feet to a point on the south line of East High Avenue.

THENCE, with said south line, N 77°-22' E, a distance of 100.06 feet to the point of beginning. Containing 7731 square feet. (0.177 acre).

Last previous deed reference: Volume 335, Page 774.

Prepared by:

Clayton M. Lee
Reg. Surveyor No. 6181
10-22-79



Lee Surveying and Mapping Co.



Farm Surveys • Lot Surveys • Topography • Subdivisions • Construction Layout

855 LAST SANDUSKY AVENUE
BELLEFONTAINE, OHIO 43311

(513) 593-5780

CLAYTON M. LEE, P.S.
JEFFREY I. LEE, P.S.

TAPP APARTMENTS

TRACT 'B' (MIDDLE APARTMENTS)

Lying in the City of Bellefontaine, Lake Township, Logan County, Ohio and being a part of that 0.70 acre tract deeded and described in Volume 335, Page 774 of the Logan County Records of Deeds and more particularly described as follows:

Beginning at a point in the center-line of East High Avenue marking the northeast corner of said 0.70 acre tract.

THENCE, with the east line of the said 0.70 acre tract, S 15°-06'-20" E, a distance of 103.92 feet to a point marking the northeast corner of this tract. THE TRUE POINT OF BEGINNING.

THENCE, continuing with said east line, S 15°-06'-20" E, a distance of 90.00 feet to a point.

THENCE, S 77°-36' W, a distance of 91.52 feet to a point in the west line of said 0.70 acre tract.

THENCE, with said west line, N 18°-00' W, a distance of 90.11 feet to a point.

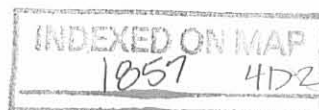
THENCE, N 77°-28' E, a distance of 96.07 feet to the point of beginning. Containing 8423 square feet. (0.193 acre).

Last previous deed reference: Volume 335, Page 774.

Prepared by:

Clayton M. Lee

Clayton M. Lee
Reg. Surveyor No. 6181
10-22-79



Lee Surveying and Mapping Co.



Farm Surveys • Lot Surveys • Topography • Subdivisions • Construction Layout

855 EAST SANDUSKY AVENUE
BELLEFONTAINE, OHIO 43311

(513) 593-5780

CLAYTON M. LEE, P.S.
JEFFREY I. LEE, P.S.

TAPP APARTMENTS TRACT 'C' (SOUTH BUILDING)

Lying in the City of Bellefontaine, Lake Township, Logan County, Ohio and being a part of that 0.70 acre tract deeded and described in Volume 335, Page 774 of the Logan County Records of Deeds and more particularly described as follows:

Beginning at a point found on the center-line of East Brown Avenue marking the southwest corner of the said 0.70 acre tract and lying north-easterly along said center-line of Brown Avenue a distance of 98.42 feet from the center-line of Stanley Street.

THENCE, with the west line of said 0.70 acre tract, N 18°-00' W, a distance of 21.22 feet to an iron pipe in the north line of East Brown Avenue. THE TRUE POINT OF BEGINNING.

THENCE, continuing with said west line, N 18°-00' W, a distance of 131.16 feet to a point.

THENCE, N 77°-36' E, a distance of 91.52 feet to a point in the east line of said 0.70 acre tract.

THENCE, with said east line, S 15°-06'-20" E, a distance of 91.71 feet to a point on the north line of East Brown Avenue.

THENCE, with said north line, S 52°-29' W, a distance of 91.75 feet to the point of beginning. Containing 9865 square feet (0.227 acre).

Last previous deed reference: Volume 335, Page 774.

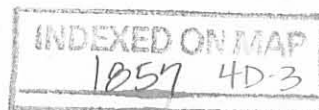
Prepared by:

Clayton M. Lee

Clayton M. Lee

Reg. Surveyor No. 6181

10-22-79



Lee Surveying and Mapping Co.



Farm Surveys • Lot Surveys • Topography • Subdivisions • Construction Layout

855 EAST SANDUSKY AVENUE
BELLEFONTAINE, OHIO 43311

(513) 593-5780

CLAYTON M. LEE, P.S.
JEFFREY I. LEE, P.S.

TAPP APARTMENTS
PARKING LOT EASEMENT

Lying in the City of Bellefontaine, Lake Township, Logan County, Ohio and being the north part of that 0.25 acre tract deeded and described in Volume 344, Page 968 of the Logan County Records of Deeds and more particularly described as follows:

Beginning at a point in the center-line of East High Avenue marking the northeast corner of this tract and the northwest corner of a 0.70 acre tract (Volume 335, Page 774).

THENCE, with the west line of said 0.70 acre tract, S 18°-00' E, a distance of 25.11 feet to a point on the south line of East High Avenue.
THE TRUE POINT OF BEGINNING.

THENCE, continuing with said west line, S 18°-00' E, a distance of 92.00 feet to a point.

THENCE, S 72°-00' W, a distance of 49.78 feet to a point on the west line of said 0.25 acre tract.

THENCE, with said west line, N 18°-00' W, a distance of 96.68 feet to a point on the south line of East High Avenue.

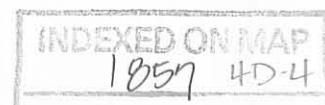
THENCE, with said south line, N 77°-22' E, a distance of 50.00 feet to the point of beginning. Containing 4696 square feet (0.108 acre).

Last previous deed reference: Volume 344, Page 968.

Prepared by:

Clayton M. Lee

Clayton M. Lee
Reg. Surveyor No. 6181
10-23-79



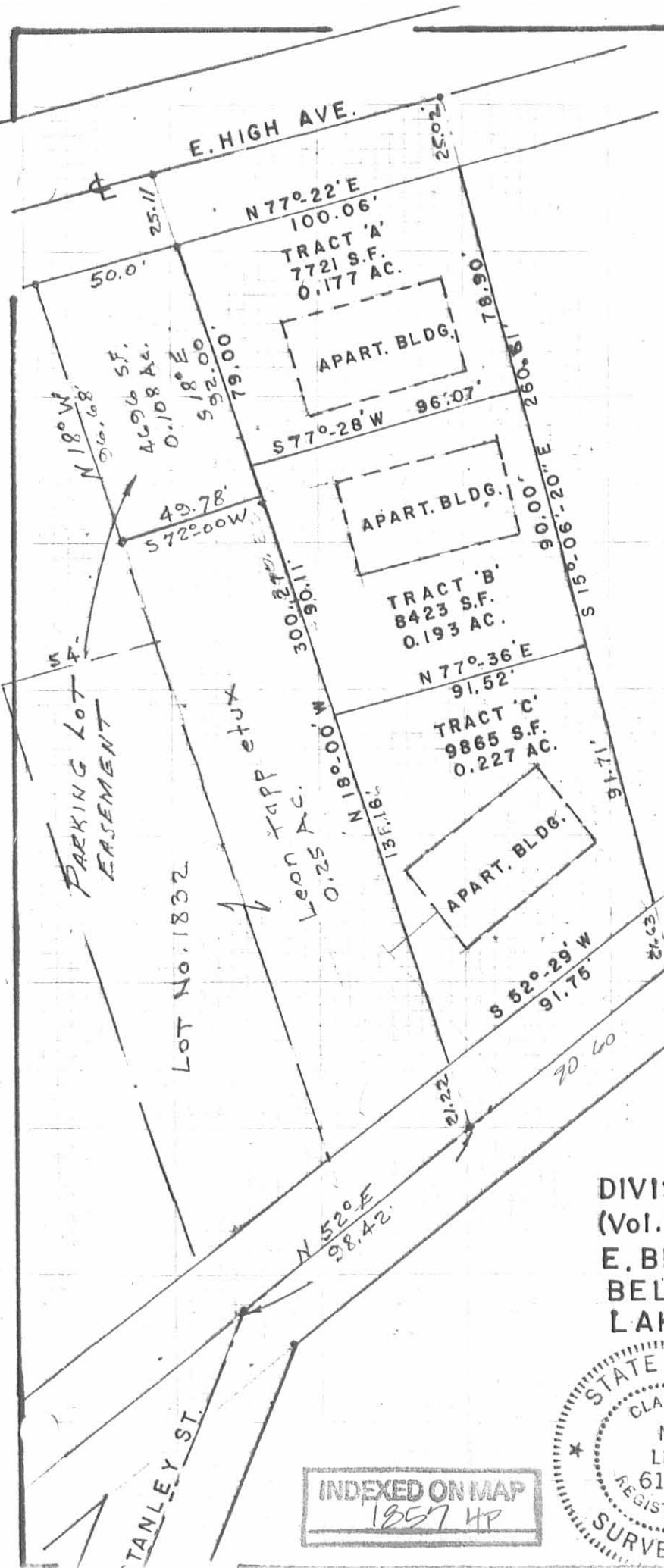
LEE SURVEYING & MAPPING CO.

855 E. Sandusky Ave.
BELLEFONTAINE, OHIO 43311
(513) 593-5780

NORTH



SCALE ~ 1" = 50'



DIVISION OF 0.70 ACRE TRACT
(Vol. 335, Pg. 774)

E. BROWN & E. HIGH AVES.

BELLEFONTAINE,

LAKE TWP., LOGAN CO., OHIO

INDEXED ON MAP
1257 HP



By:

Clayton M. Lee
Clayton M. Lee
Reg. Surveyor 6181
10-22-79