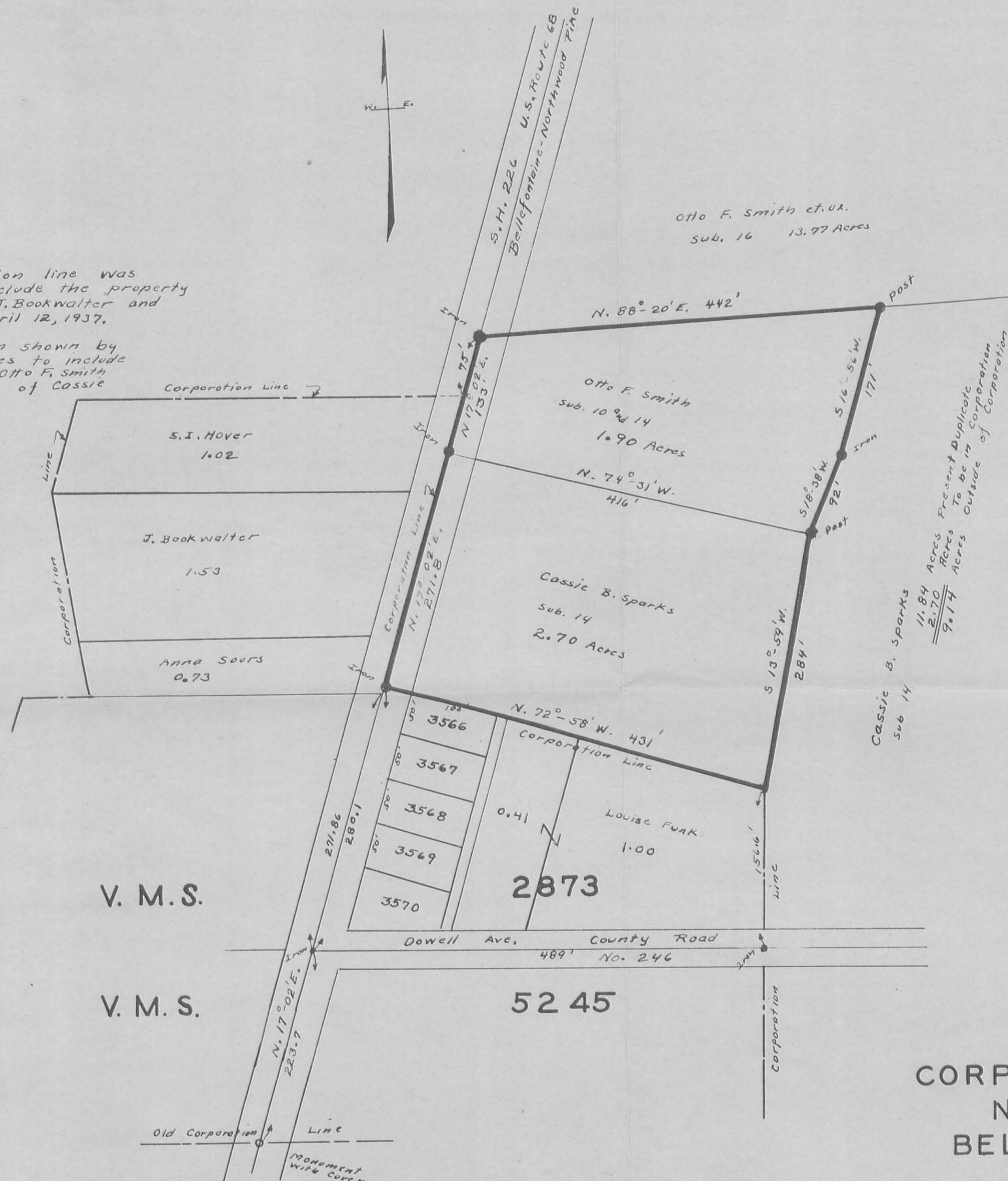


Note:-

The corporation line was extended to include the property of S.I. Hoover, J. Bookwalter and Anna Sours April 12, 1937.

This extension shown by heavy black lines to include 1.90 Acres of Otto F. Smith and 2.70 Acres of Cassie B. Sparks.



Otto F. Smith et. ux.  
Sub. 16 13.97 Acres

Cassie B. Sparks  
Sub 14  
11.84 Acres Present Duplicate  
2.70 Acres To be in Corporation  
9.14 Acres Outside of Corporation

CORPORATION LINE EXTENSION  
NORTH MAIN STREET  
BELLEFONTAINE OHIO  
1938  
LAKE TOWNSHIP LOGAN COUNTY  
1" = 100'

Survey Notes  
Book 209



INDEXED ON MAP  
1953 IP