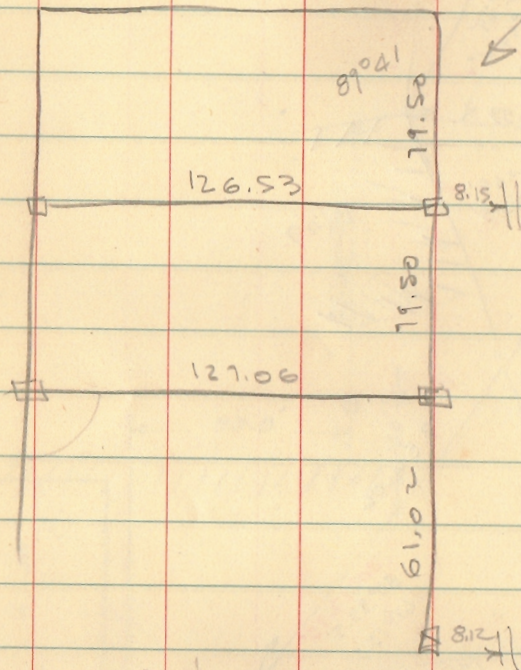


HENRY SURVEY

ORGAN ST.

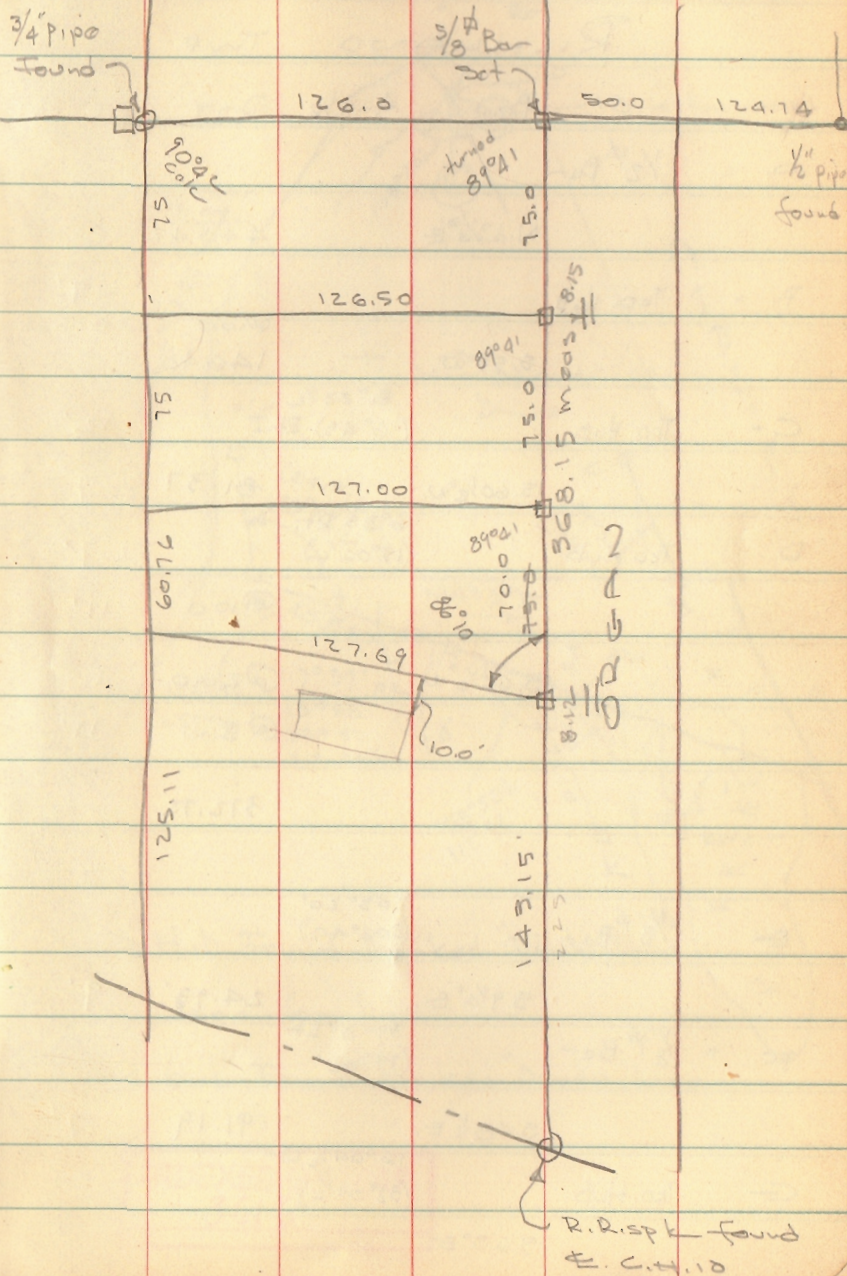
Revised 10-5-63



INDEXED ON MAP  
2022

9-7-63

31





SURVEYORS CERTIFICATE

ACCEPTANCE

This Plat correctly shows SPARKS ALLOTMENT in V.M.S. 4478 in Bellefontaine Ohio. All measurements are in feet and tenths. Summit Drive is fifty feet wide. Survey made May and June 1950. Acres in lots 3.99 Acres in Street 0.64 Total acres in Allotment 4.63.

The annexed plat was adopted by Ordinance as an Addition to the City of Bellefontaine, State of Ohio by the Council at a regular meeting on the 16 day of August 1950 Ordinance Number 1970-14 August 1978

DEDICATION

Know all men by these presents that Ruric C. Sparks proprietor of the land indicated on the accompanying plat has authorized the laying out of the same, the Streets are hereby dedicated to the public use forever.

Witness

Witness

STATE OF OHIO COUNTY OF LOGAN SS:

Be it remembered that on the 25 day of July in the year One Thousand Nine Hundred and Fifty before me a Notary Public in and for said County came \_\_\_\_\_ grantor in the foregoing dedication and acknowledged the signing to be his Voluntary act.

Notary Public  
Logan County Ohio

Clerk

President of Council

AUDITORS OFFICE LOGAN COUNTY OHIO

The lots shown were transferred the 28 day of July 1950 A.D.

Auditor of Logan County

RECORDERS OFFICE LOGAN COUNTY OHIO

Received for record at 11:45 A.M. o'clock the 28 day of July 1950

Recorded \_\_\_\_\_ 1950 in Vol. \_\_\_\_\_ Book 3 Page 62

Recorder of Logan County Ohio.



**SPARKS ALLOTMENT**  
 BELLEFONTAINE LAKE TOWNSHIP  
 LOGAN COUNTY OHIO

V.M.S. 4478

JUNE 1950

1" = 30'

FF WRIGHT  
ENGINEER



JJ-57

A-103

JJ-57