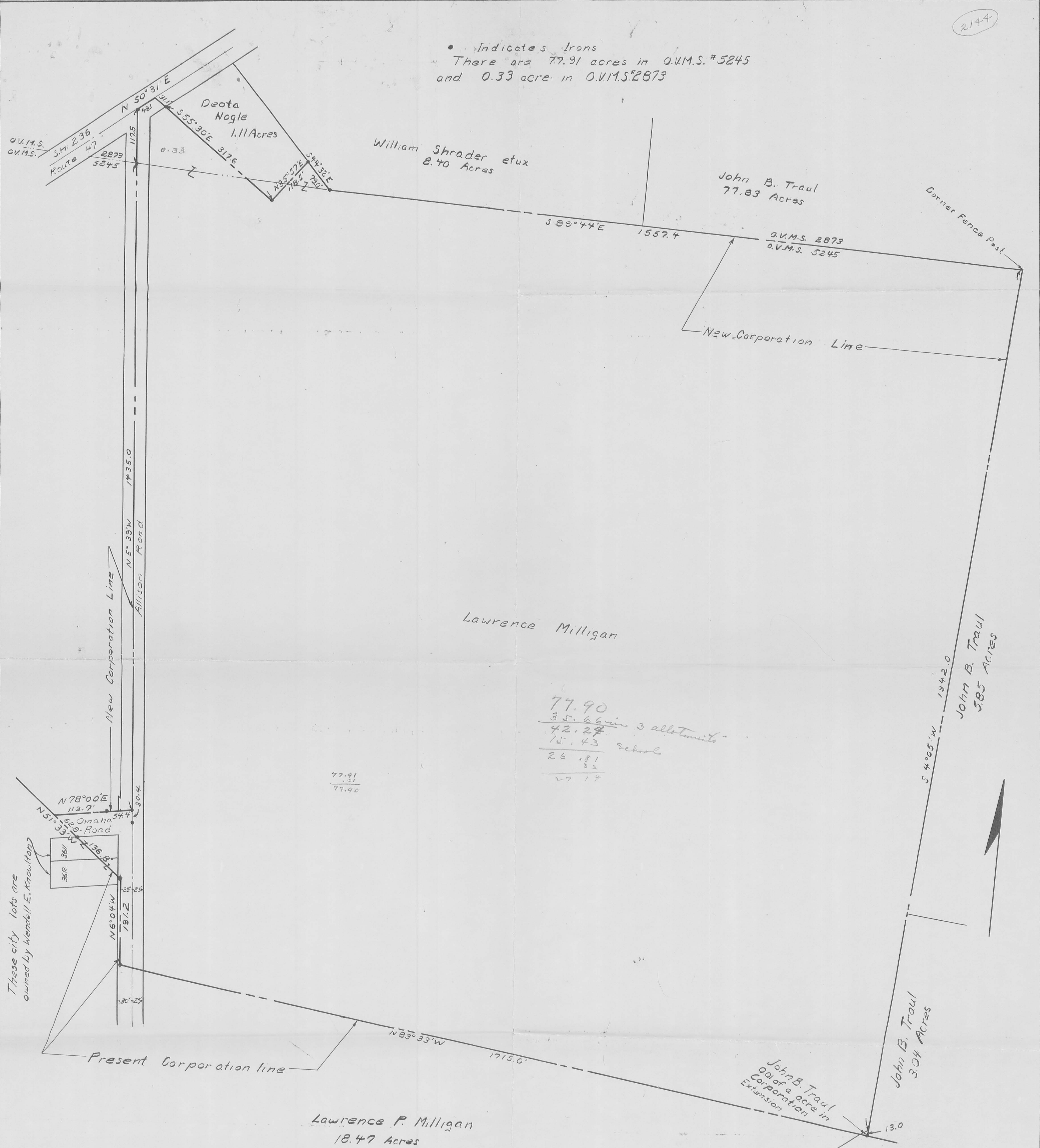


• Indicates Irons
There are 77.91 acres in O.V.M.S. #5245
and 0.33 acre in O.V.M.S. #2873



77.90
 35.66 in 3 allotments
 42.24
 18.43 school
 26.81
 3.2
 27.14

77.91
 .01
 77.90

ACCEPTANCE

The annexed plat was adopted by Ordinance No. 2336 as an addition to the city of Bellefontaine, Ohio, at a regular meeting of the city council on the first day of August, 1955.

Travis Wren Mayor
J. B. Wren Clerk

SURVEYORS CERTIFICATE

I hereby certify that the annexed Plat is a correct representation of property to be annexed to the city of Bellefontaine, Ohio.

Owen R. Lusk
 Surveyor in training
E. K. Lusk
 Registered Surveyor #821

JJ-81

**CORPORATION LINE EXTENSION
 EAST OF ALLISON ROAD
 BELLEFONTAINE, OHIO
 O.V.M.S. 5245 & 2873
 LAKE TOWNSHIP, LOGAN COUNTY
 1954 1" = 100'**

ACCEPTANCE

The annexed Plat was approved and accepted by the Board of County Commissioners at a regular meeting May 14, 1955 and recorded in Journal I-F page ME 495
H. H. Levi, Hugh Cochran, Wm. M. Hartman
 Commissioners of Logan County

AUDITORS OFFICE LOGAN COUNTY, OHIO

Transferred this 11 day of August, 1955
Harry E. Travis
 Auditor, Logan County

RECORDERS OFFICE LOGAN COUNTY, OHIO

Received for Record at 2:20 o'clock P.M. Aug. 11th 1955
 Recorded in Plat Book 4-D Volume D Page 10
Norma L. Strayer
 Recorder, Logan County

JJ-81

This plat to be prepared by Bellefontaine City Engineer's office